

P A B U

BOSTON

SECOND FLOOR RESTAURANT
MILLENNIUM TOWER

BOSTON LANDMARKS COMMISSION

SEPTEMBER 27, 2016

MP MILLENNIUM PARTNERS

MINA

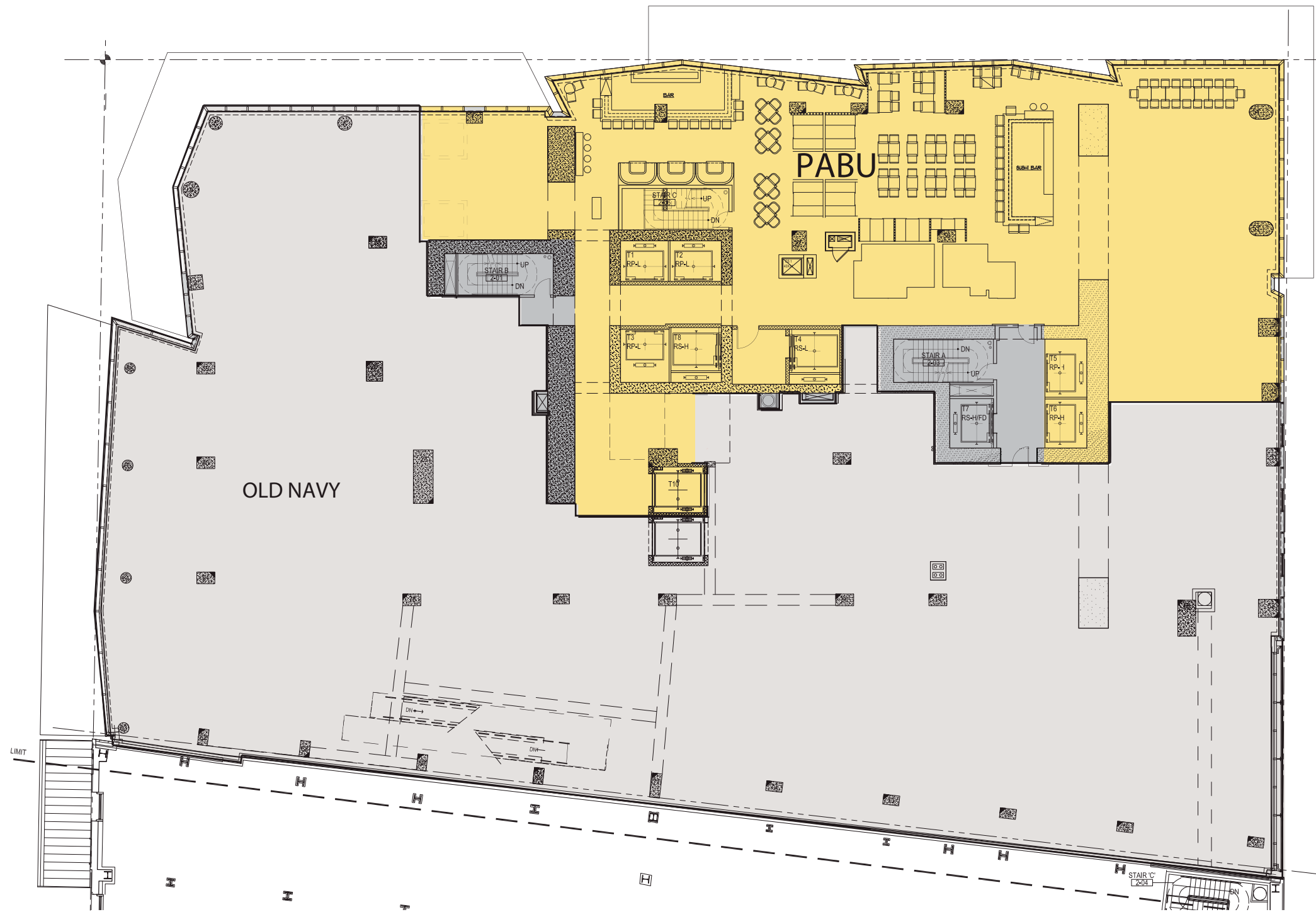
**BISHOP
PASS**
interior architecture / design

overall signage plan





MILLENNIUM TOWER | GROUND FLOOR PLAN



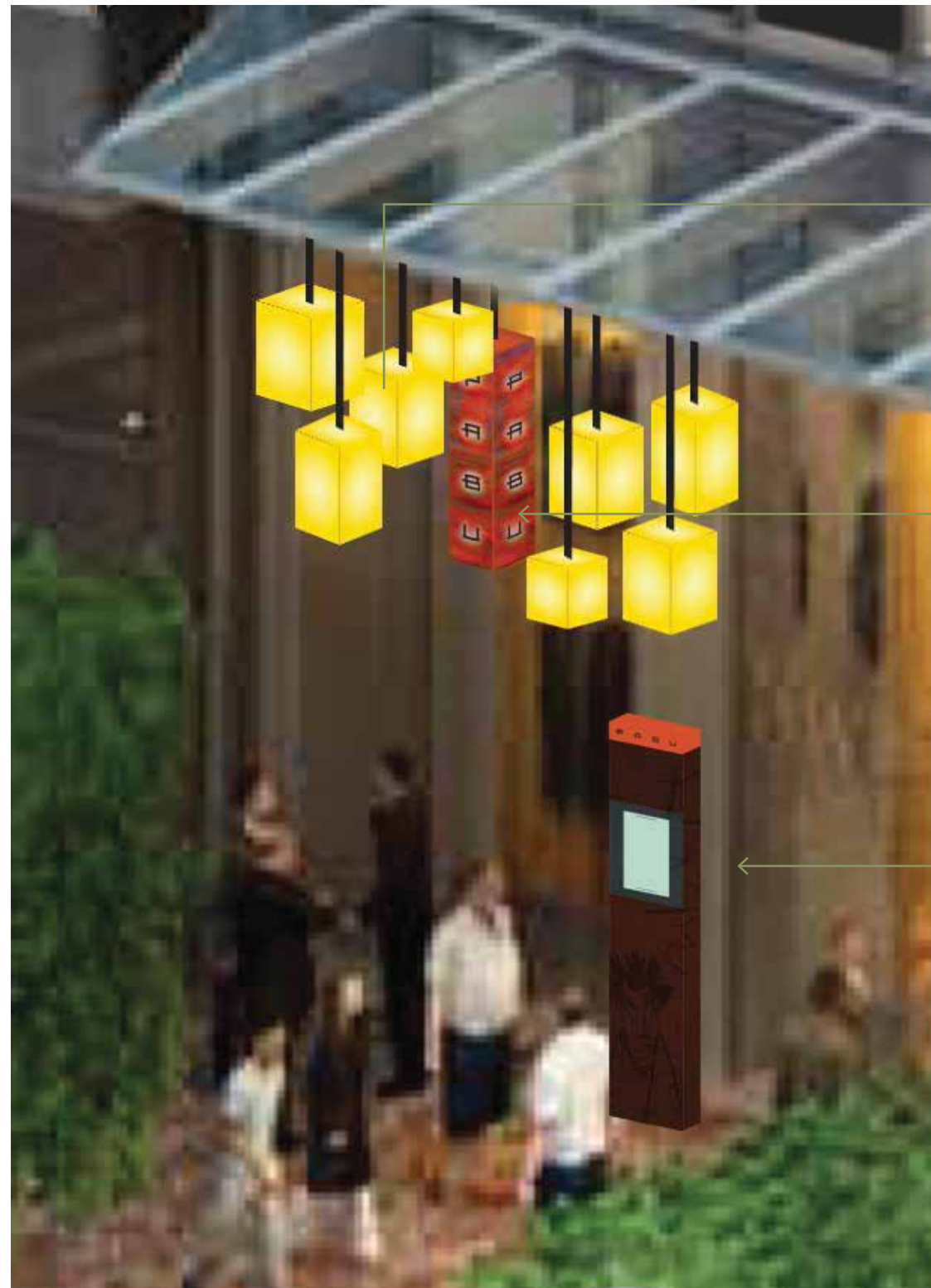
MILLENNIUM TOWER | SECOND FLOOR PLAN



overall signage with adjacent tenant



ground floor entrance



lanterns

- bring interior experience outside
- create strong visual focal point through the clutter of the trees and other courtyard elements
- metal and acrylic fabrication

hanging blade sign

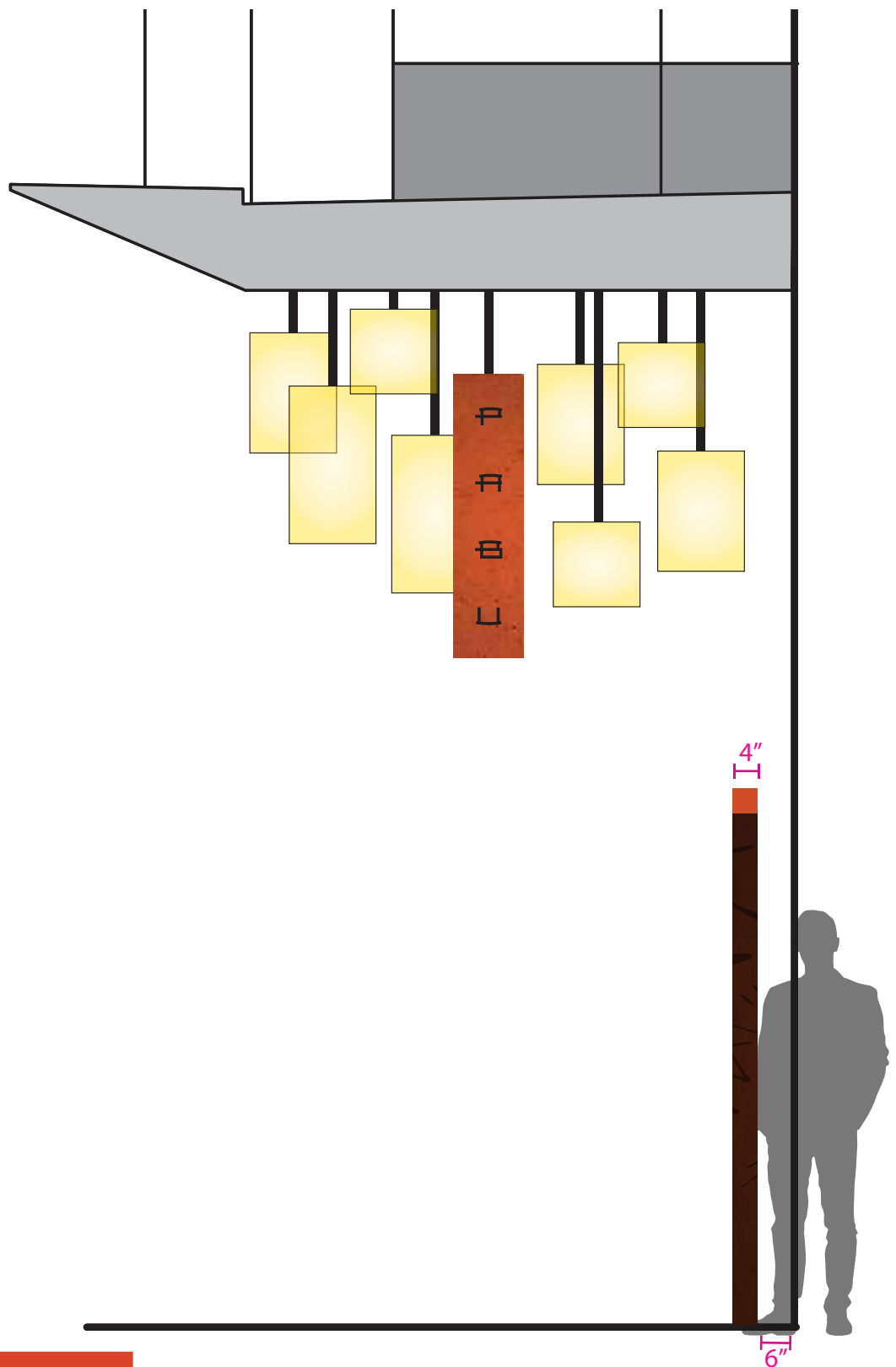
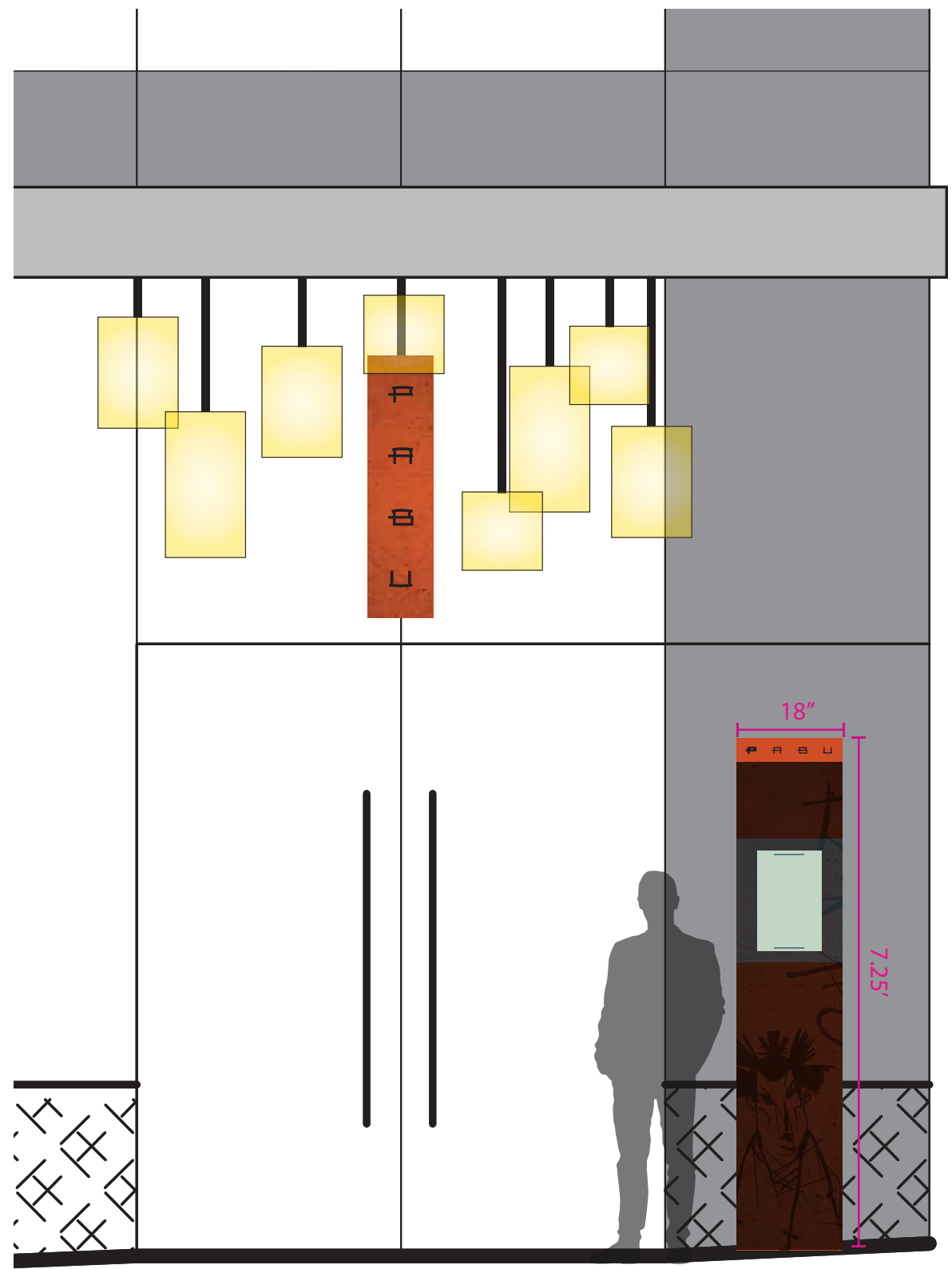
- 18" x 48" rectangle box
- patinae metal box with push through halo-lit letters
 - patinae effect should be heavier to make box more orange

menu vitrine

- mounted on front sidewalk 6" in front of building
- menu viewable from front side
- top light box cap with branding
- Pabu logon on cap
- 4" wide x 90" tall rectangle tower



menu vitrine

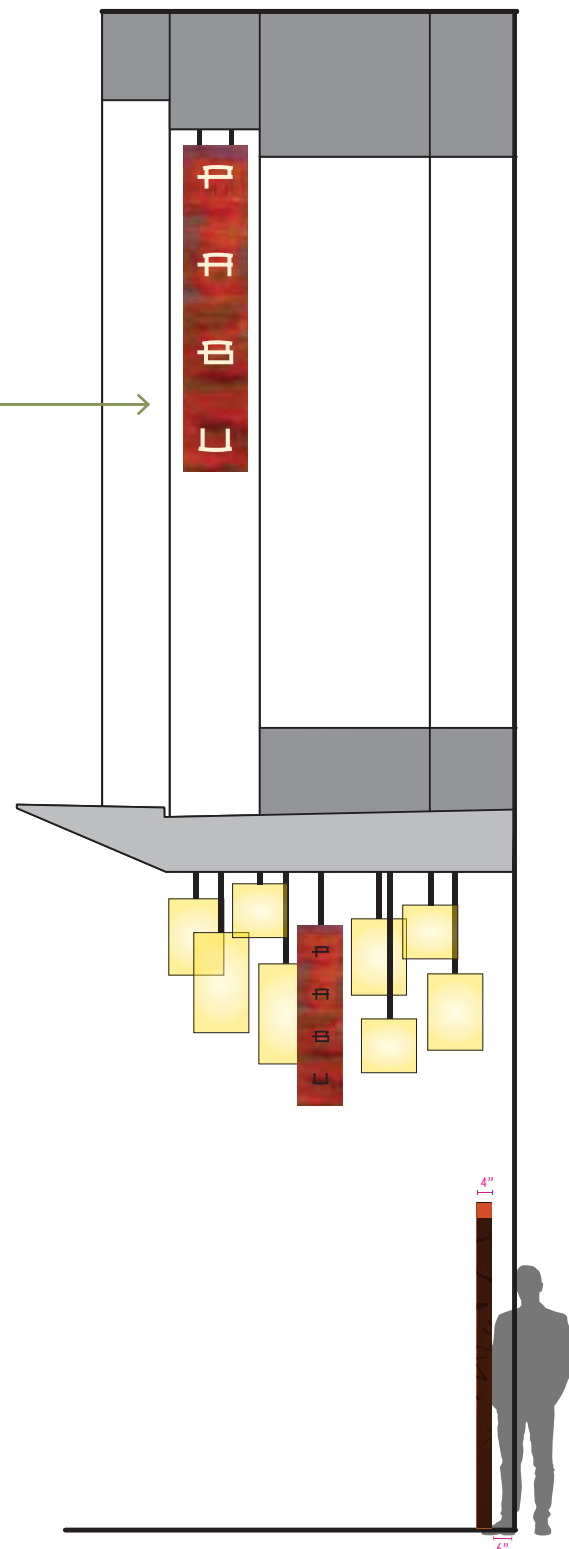




washington street view

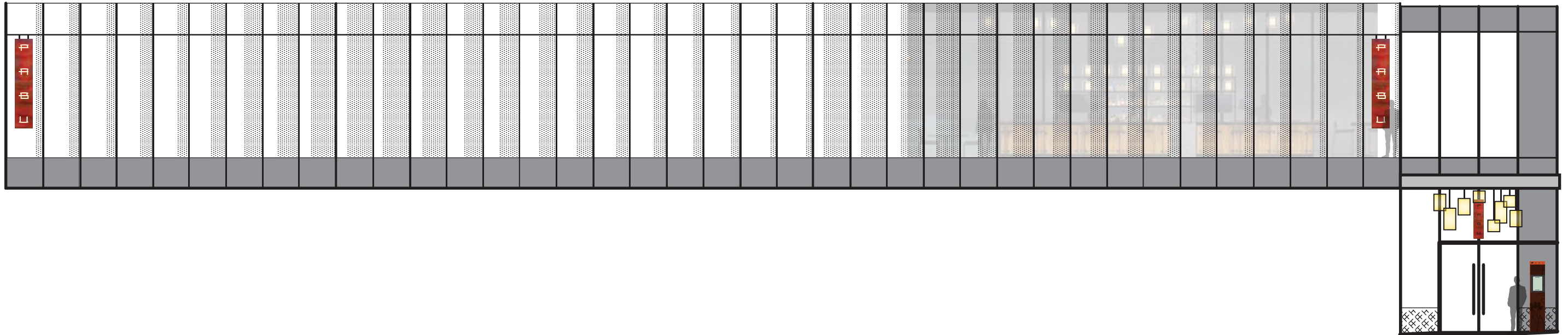
hanging logo signs

- 21.5" wide x 110" tall
- patinae metal box with push through halo-lit letters
- patinae effect should be heavier to make box more orange
- side and back should match mullion color/finish
- installed onto interior mullions



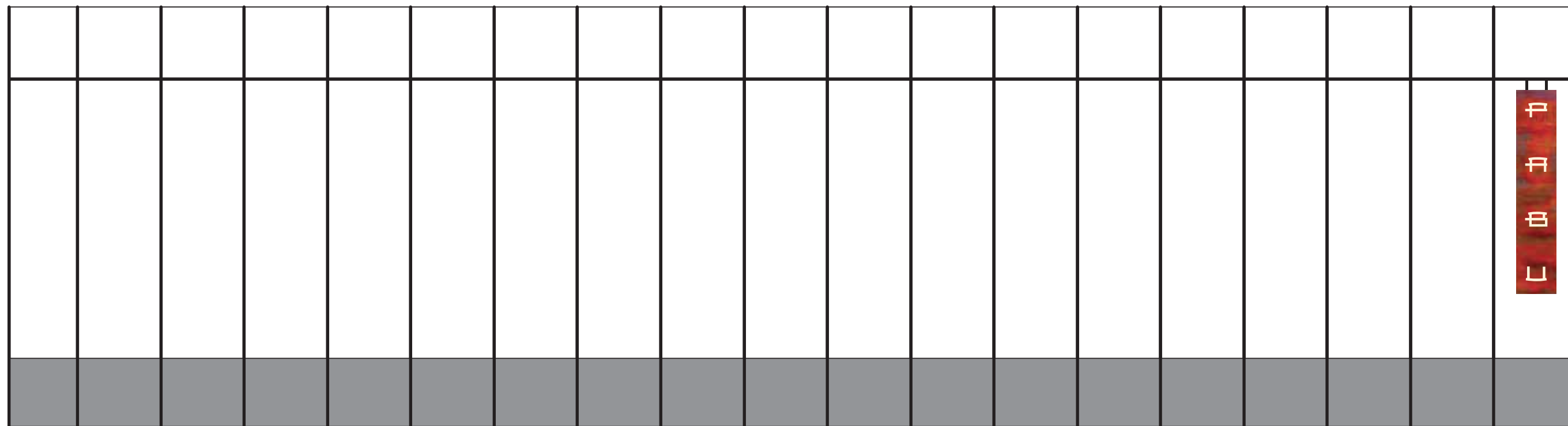


franklin street elevation



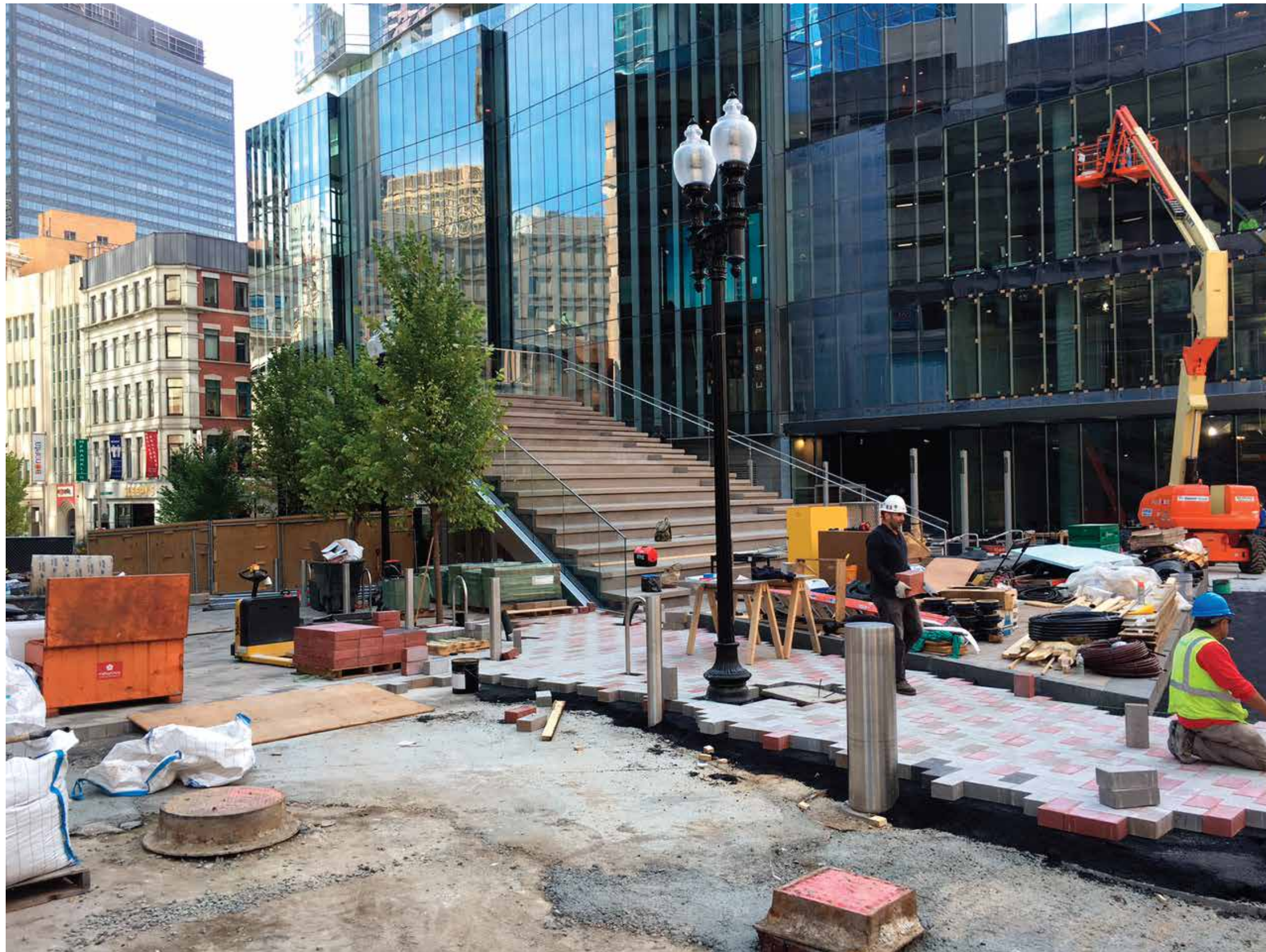


hawley street elevation

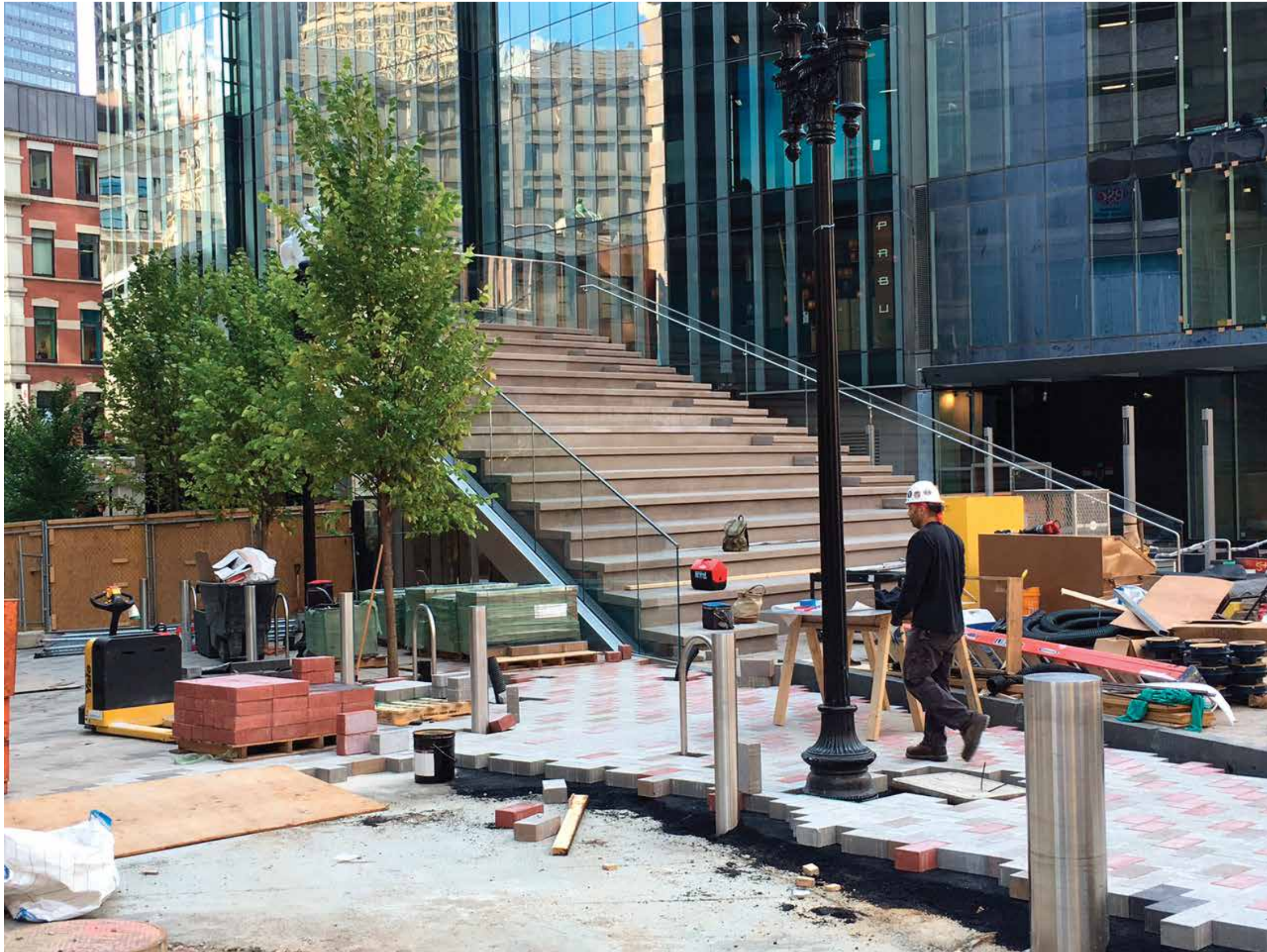




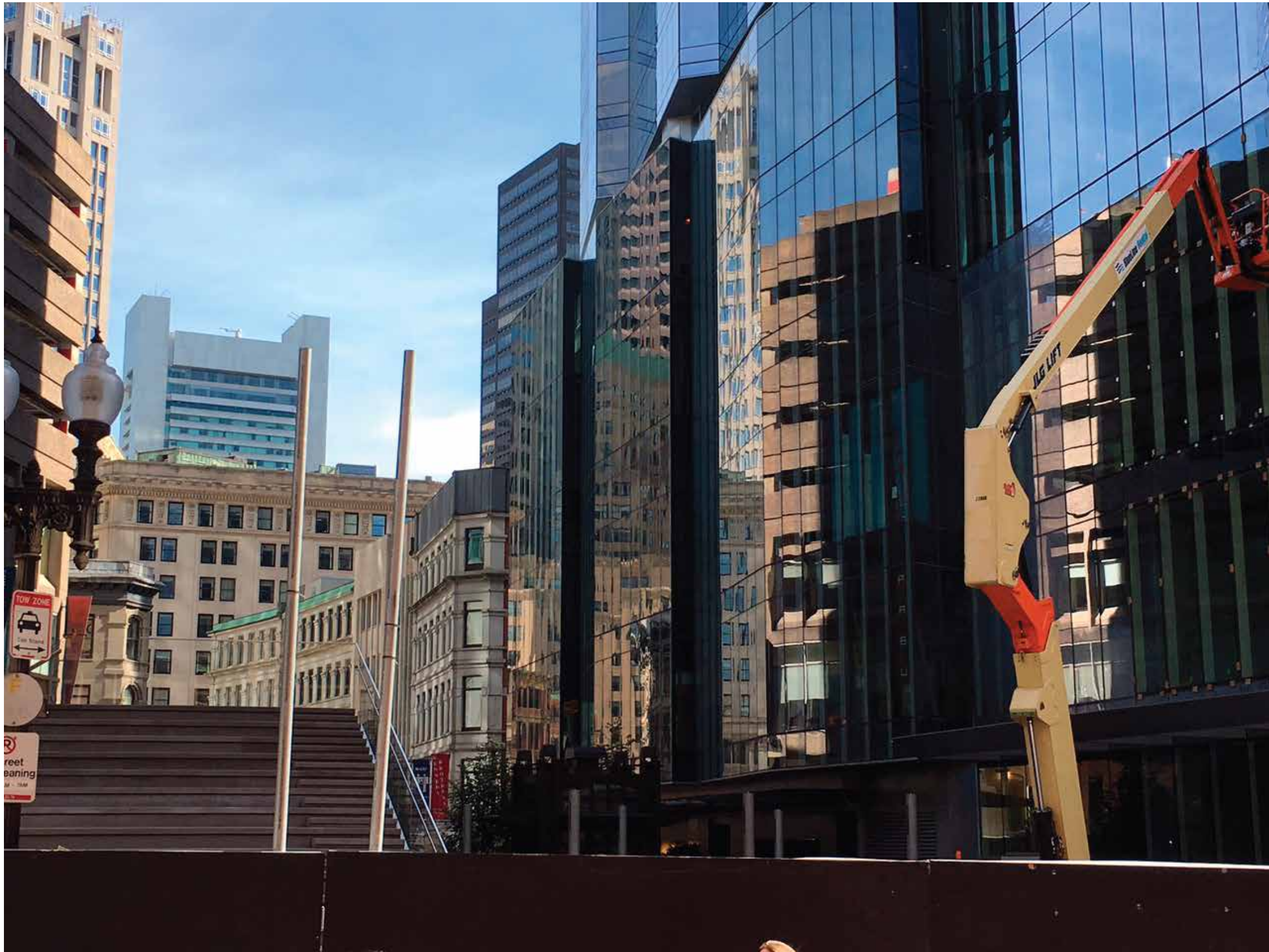




VIEW FROM FRANKLIN ST



VIEW FROM FRANKLIN ST



VIEW FROM WASHINGTON ST



VIEW FROM MBTA STATION



VIEW FROM FRANKLIN ST LOOKING WEST