

# RUGGLES STREET RECONSTRUCTION

TREMONT STREET TO WASHINGTON STREET

SEPTEMBER 4, 2019



# RUGGLES PROJECT UPDATE MEETING AGENDA

---

**September 4, 2019**

**6:00 PM**

Welcome and Introduction	5 Minutes
Presentation	25 Minutes
Stations and Discussion	60 Minutes

# RUGGLES STREET REDESIGN: Public Meetings



**May 16, 2018**

**Open House #1**

**August 23, 2018**

**Open House #2**



**October 15, 2018**

**Walking Tour**

**November 15, 2018**

**Open House #3**

# FEEDBACK RECEIVED SINCE OUR LAST MEETING



# TRAFFIC FLOW: What We Heard

---

## WORKSHOP SURVEY, November 2018

### Concerns with one-way:

- Difficulty making a left from Williams to Shawmut
- Concern about more traffic on Williams

### Concerns with two-way:

- Delay at Shawmut and Washington Intersections

# RESIDENT INPUT: March 19, 2019 Letter

---

- 1. Maintain two-way traffic between Shawmut and Washington**
- 2. Concerns regarding wrong-way traffic on Ruggles from Sojourner Truth Ct.**
  - How will the new design prevent wrong-way traffic?**
  - What can be done to prevent this now?**
- 3. Revisit configuration of travel / parking / bike lanes**
  - Suggest bike lane between travel lane and parking**
- 4. Emphasize enforcement of parking restrictions**
- 5. Support and desire for more traffic calming features**

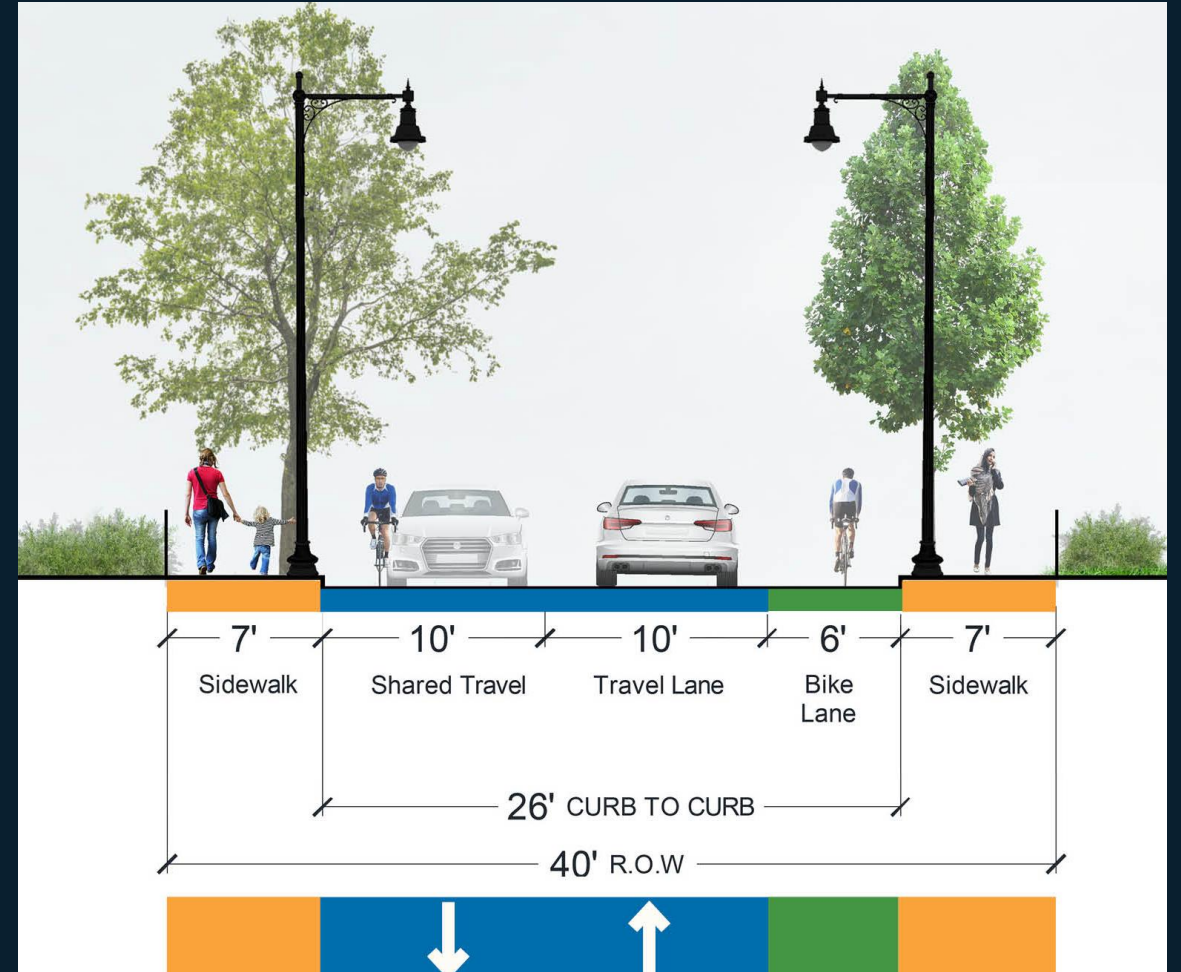
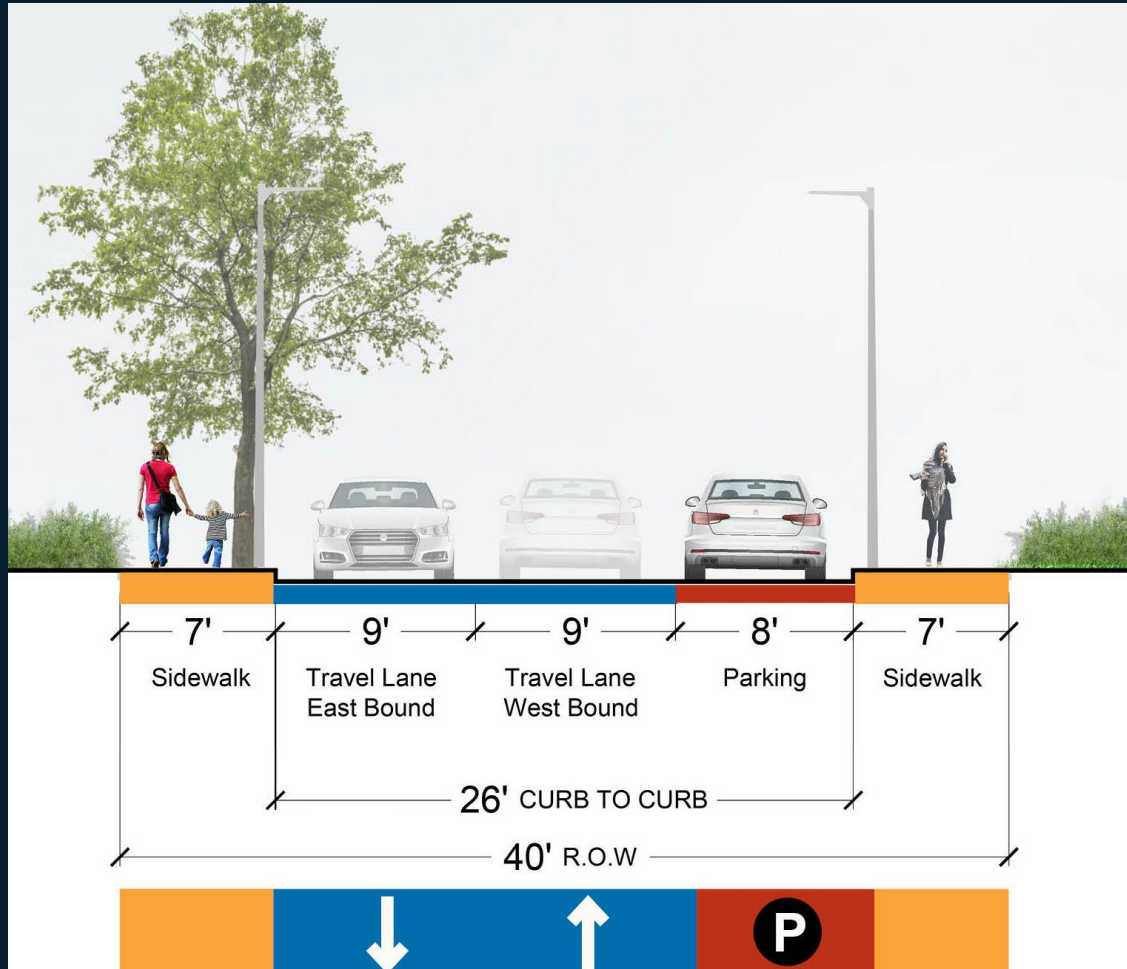
# RESPONSE TO COMMUNITY FEEDBACK

---

- Traffic Flow / Proposed One-Way Section
- Wrong Way Traffic
- Lane Configuration
- Parking Enforcement
- Traffic Calming

# TRAFFIC FLOW / ONE WAY : Overview: Street Section

## Shawmut to Washington



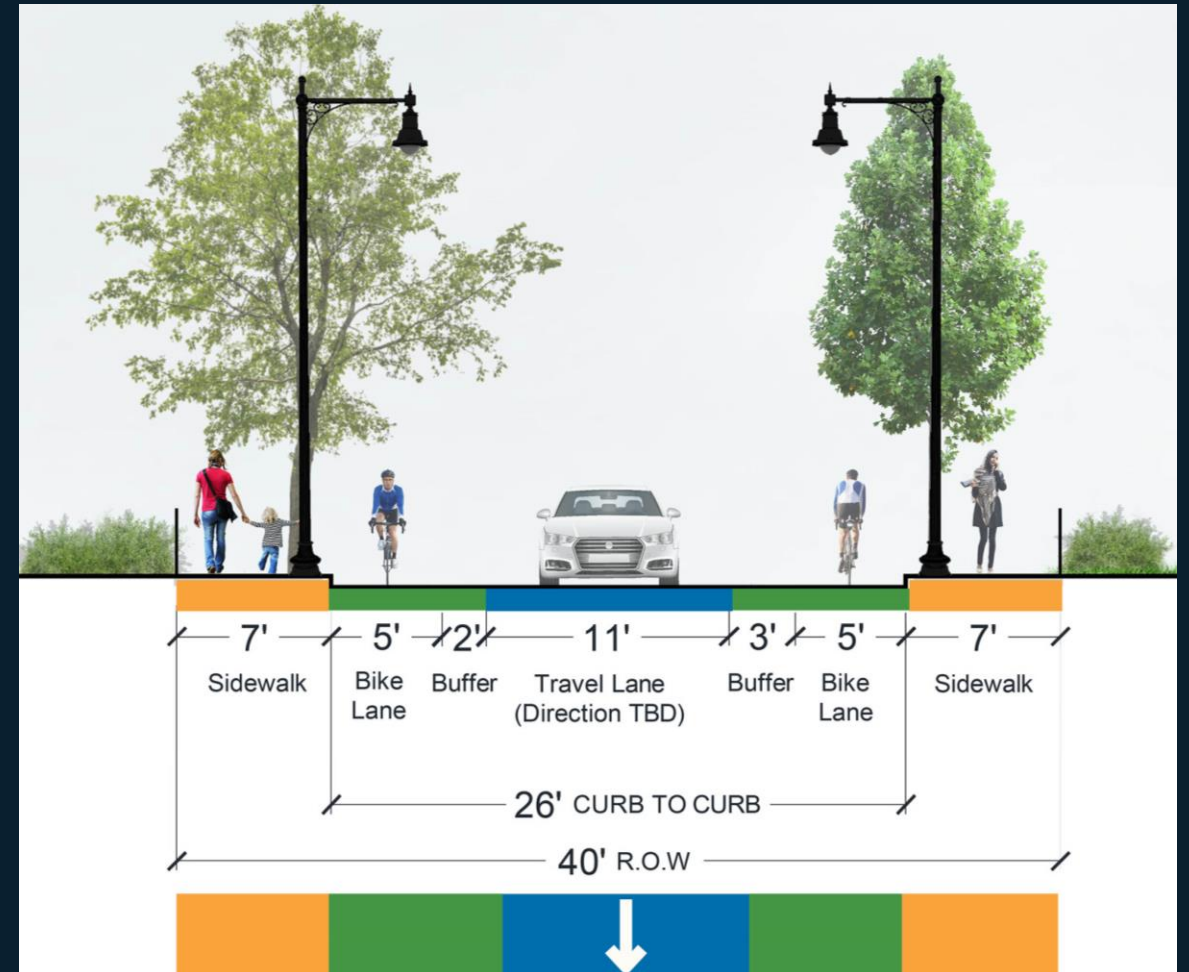
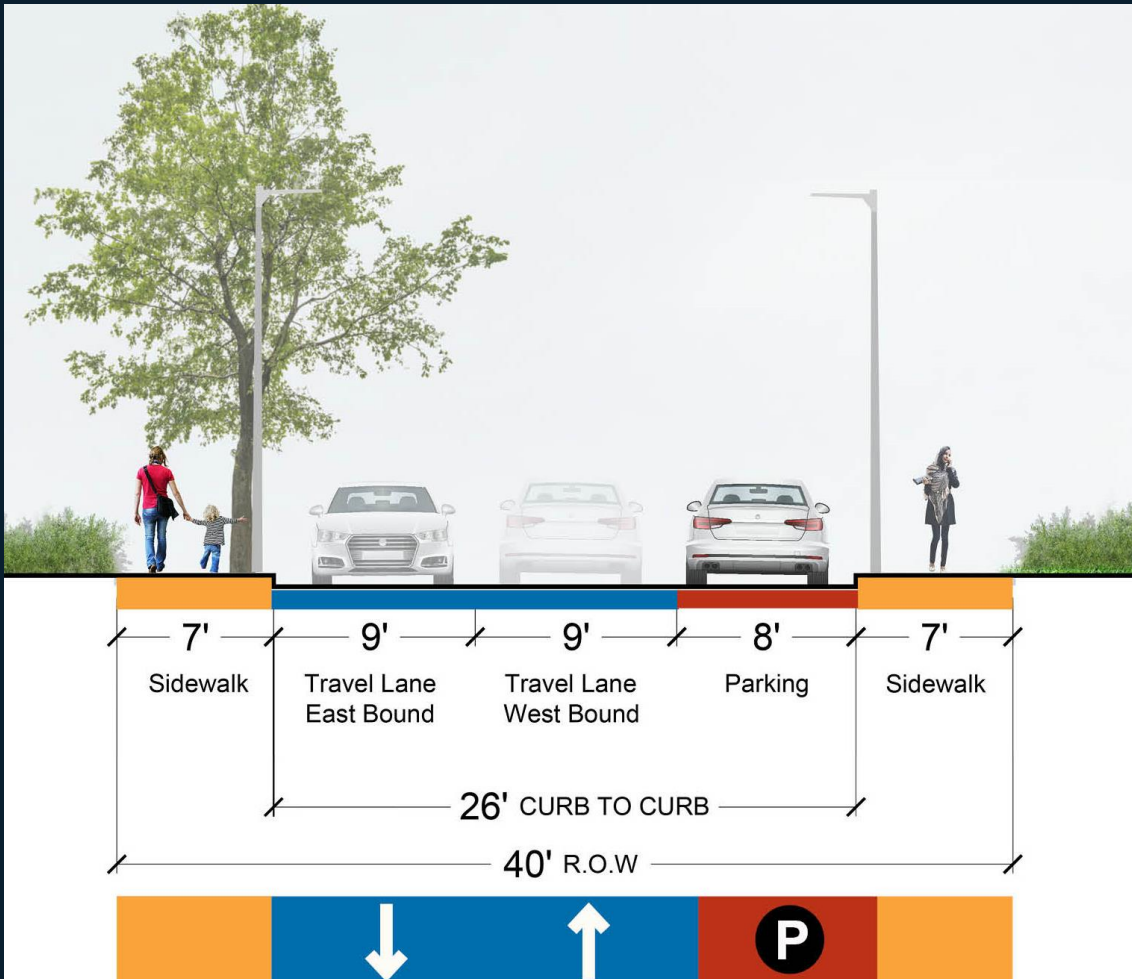
Existing

Two-Way Flow



# TRAFFIC FLOW / ONE WAY : Overview: Street Section

## Shawmut to Washington

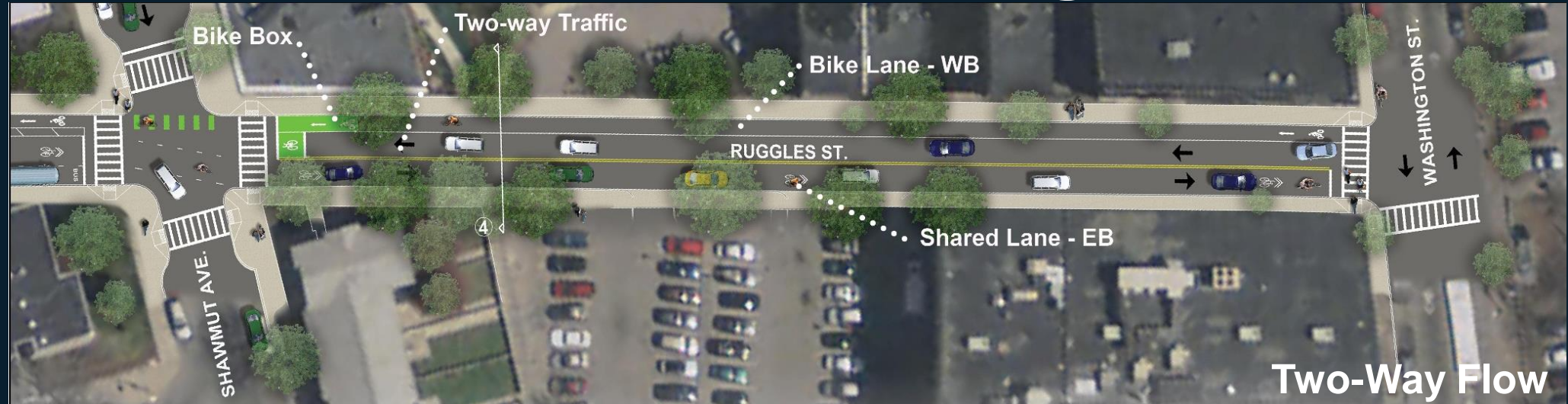


Existing

One-Way Flow

# TRAFFIC FLOW / ONE WAY : Overview: Street Plan

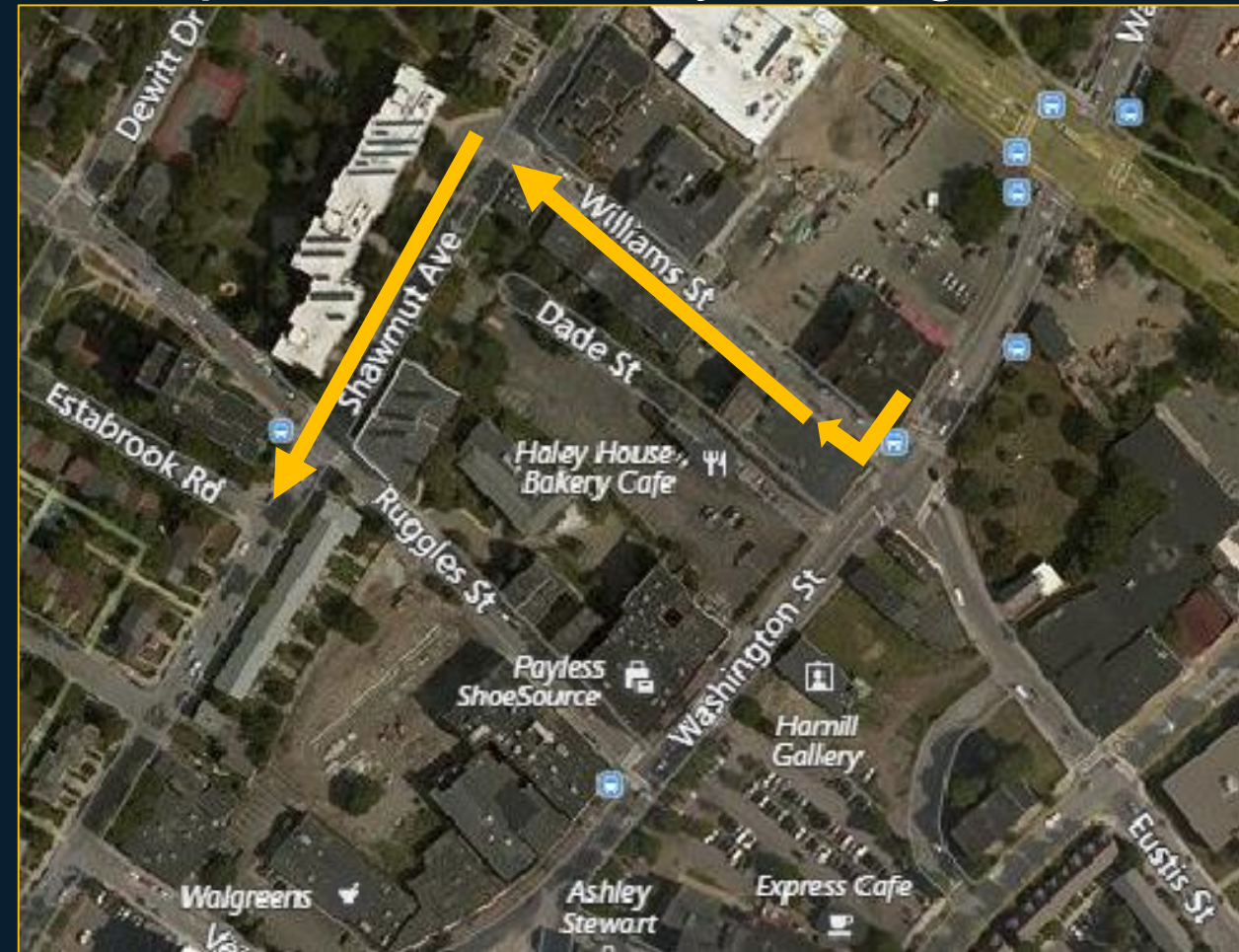
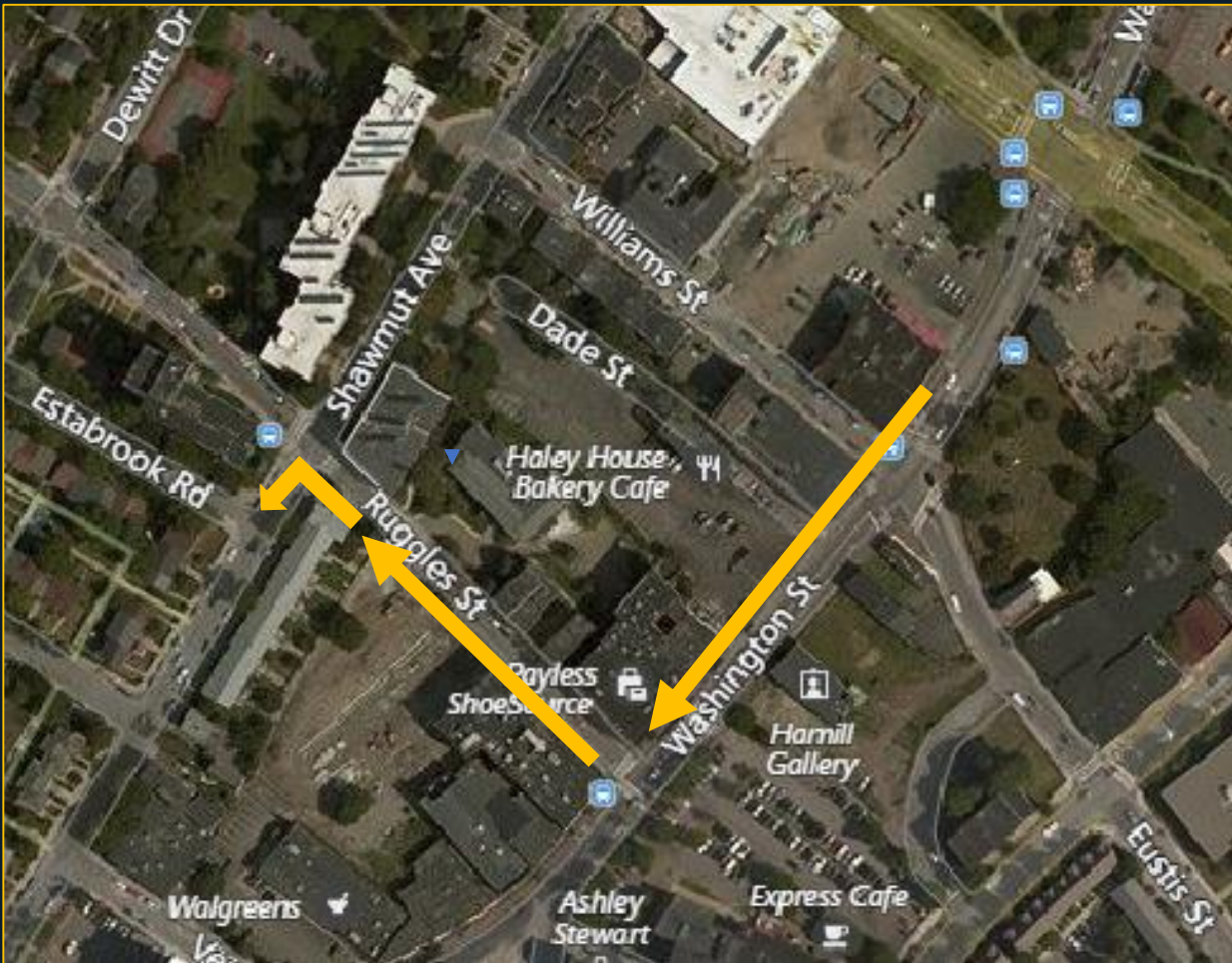
## Shawmut to Washington



# TRAFFIC FLOW / ONE WAY : Travel Time Comparison

## Existing Two-Way Configuration

## Proposed One-Way Configuration



2 Minutes

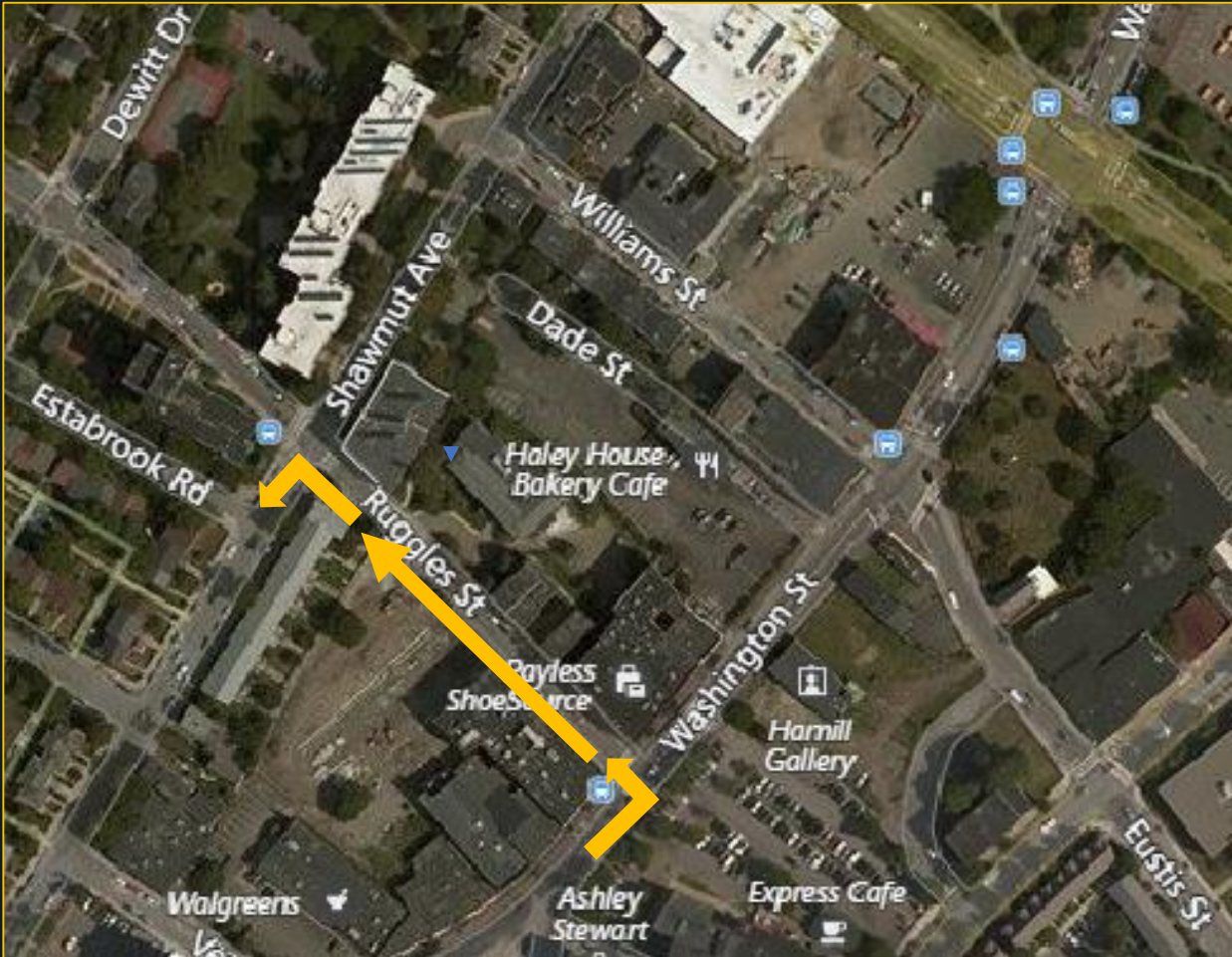
2 Minutes

Estimated Travel Times: Southbound

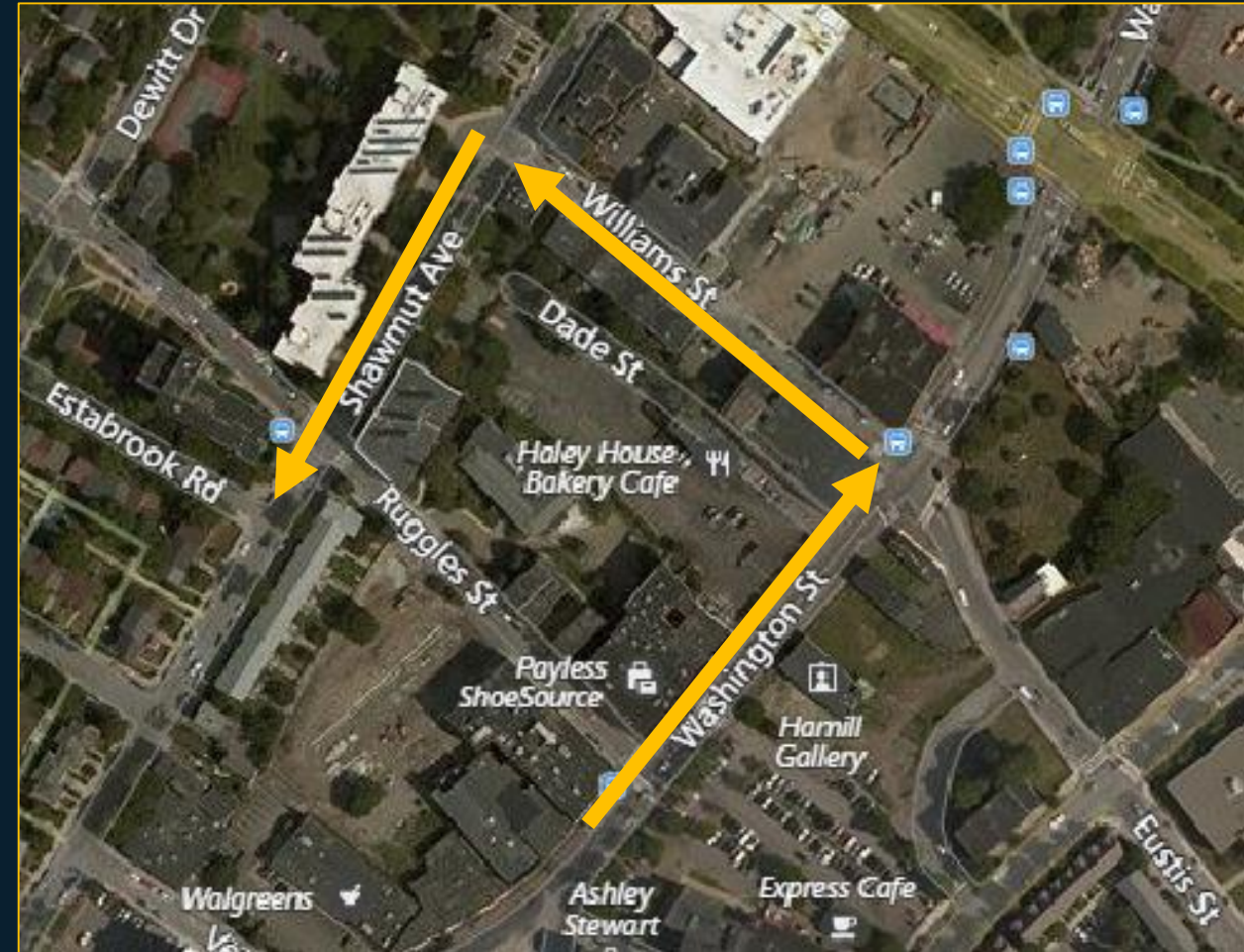
# TRAFFIC FLOW / ONE WAY : Travel Time Comparison

Existing Two-Way Configuration

Proposed One-Way Configuration



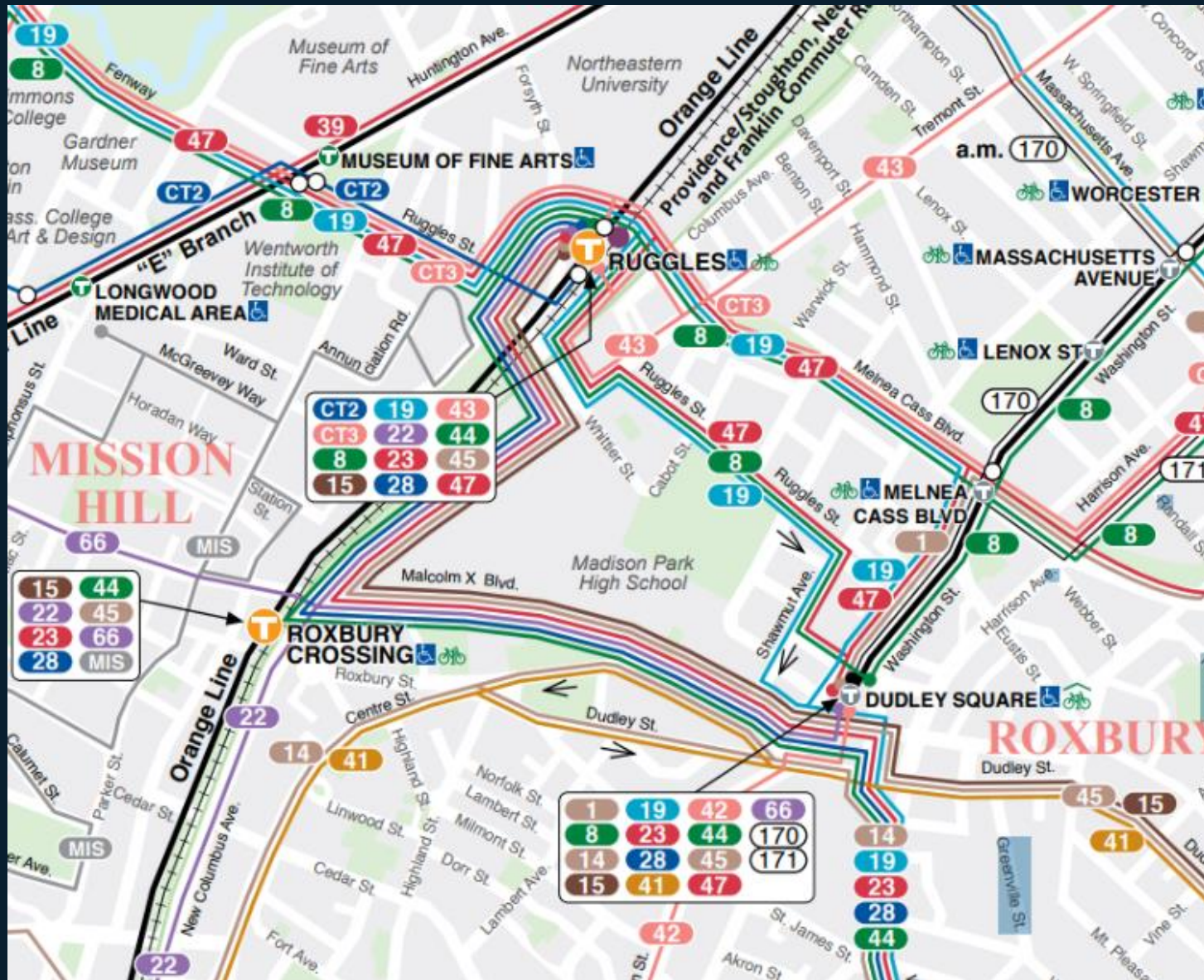
1 to 2 Minutes



2 to 3 Minutes

Estimated Travel Times: Northbound

# TRAFFIC FLOW / ONE WAY: Transit Delay

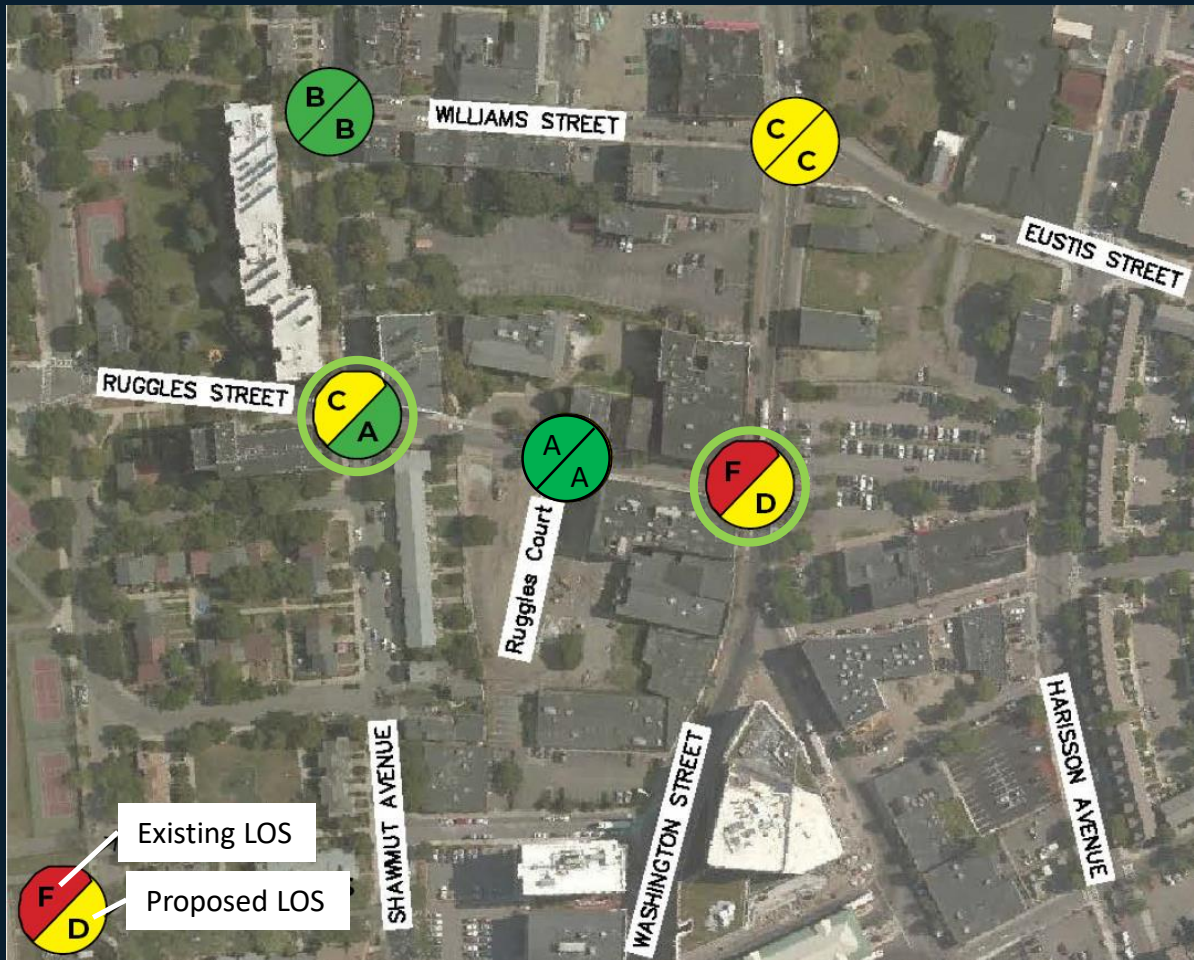


Left turns onto Ruggles from Washington cause delay for transit services on Washington Street including the Silver Line.



# TRAFFIC FLOW / ONE WAY : Intersection Operations (LOS)

## One-Way Flow Improves Operations at Two Intersections



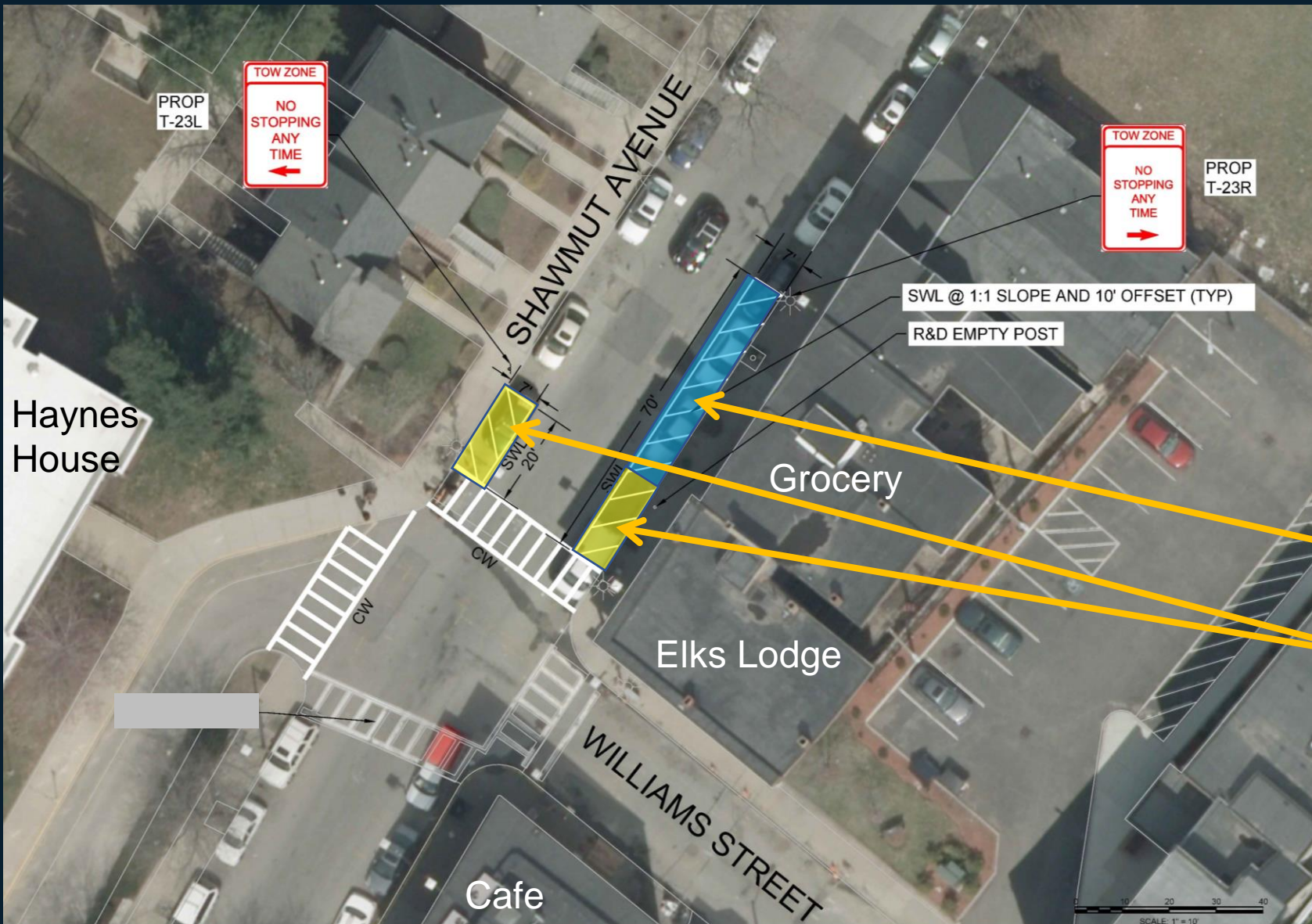
Weekday AM Peak



Weekday PM Peak

LOS= Level of Service or Delay

# TRAFFIC FLOW / ONE WAY : Intersection Improvements

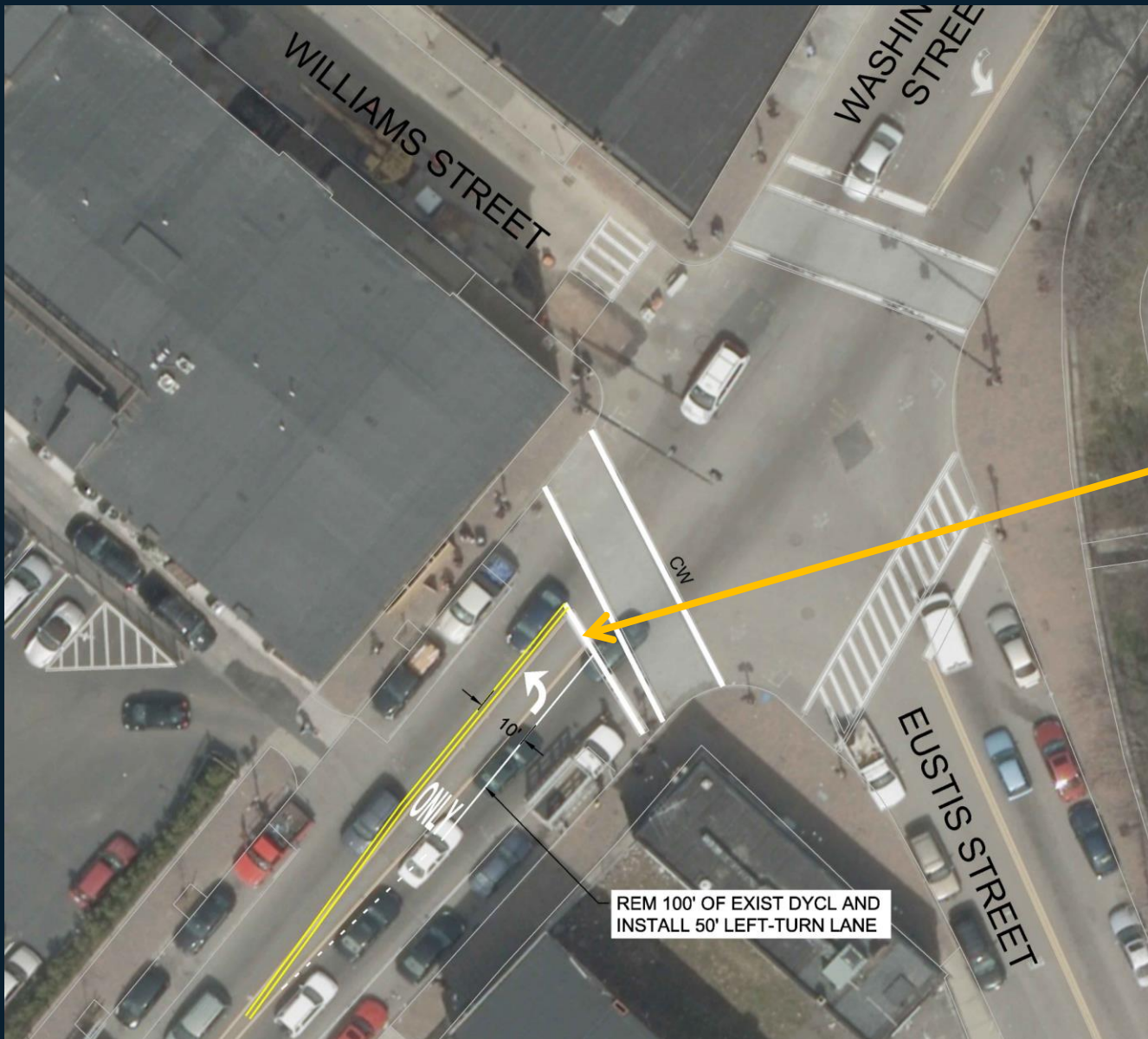


- Remove 3 Parking Spaces for Improved Sight Distance
- Remove 2 Parking Spaces For New Crosswalk Location

Williams at Shawmut



# TRAFFIC FLOW / ONE WAY : Intersection Improvements



Narrow Travel Lanes and  
Remove 2 Parking Spaces

Add New Left Turn Lane

Washington at Williams

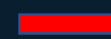
# TRAFFIC FLOW / ONE WAY: EVALUATION

	ONE-WAY	TWO-WAY
<b>MODE ACCOMMODATION</b>		
Sidewalk Improvements	==	==
Bicycle Accommodations	+	-
Transit Delay	+	-
Parking	==	==
<b>DELAY</b>		
Travel Time: Northbound	-	+
Travel Time: Southbound	==	==
<b>VOLUME</b>		
Williams Street	-	+
Ruggles Street	+	-
<b>INTERSECTION OPERATIONS</b>		
Ruggles / Shawmut	+	-
Ruggles / Washington	+	-
Washington / Williams	==	==
Williams / Shawmut	==	==

**One-Way Traffic Flow is an overall net positive change, taking into consideration a number of factors.**



Improved Condition



Worsened Condition



Equivalent Condition

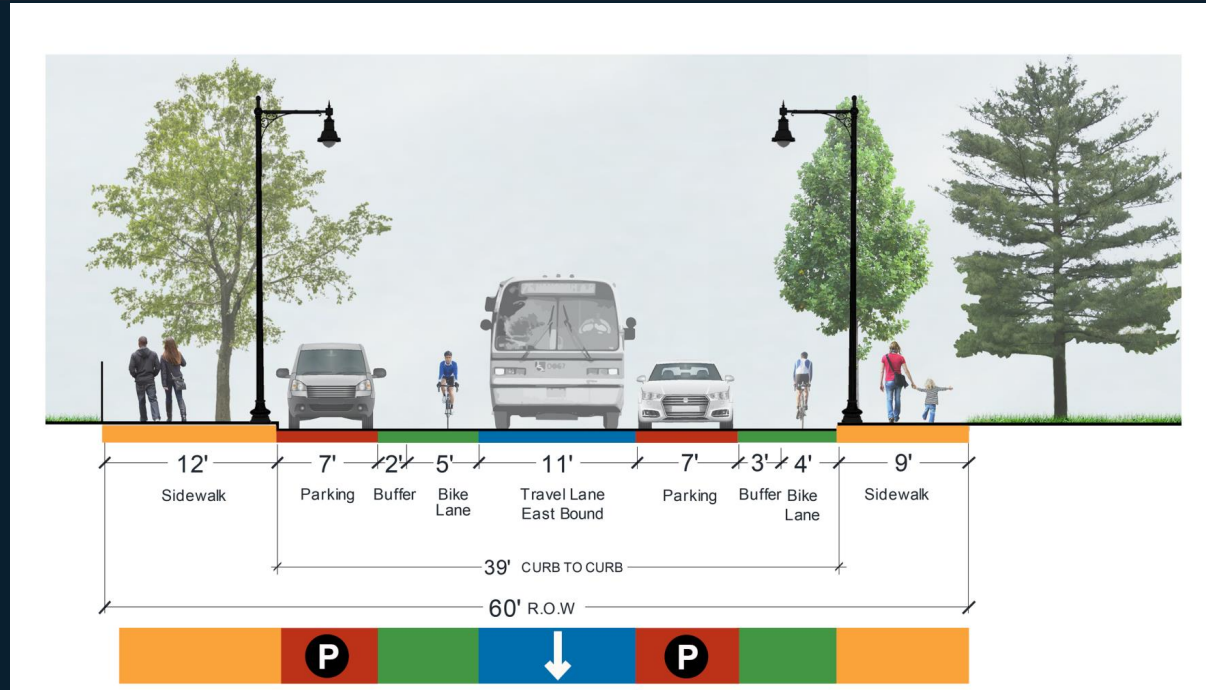
# WRONG WAY TRAFFIC

**COMMENT:**  
Cars from Sojourner  
Truth Ct. travel the  
wrong way on  
Ruggles Street.

**PROBLEM:**  
Ruggles Street is very  
wide and appears like  
a two-way street west  
of Dewitt.



# WRONG WAY TRAFFIC



## Proposed Street Design:

- The roadway will be narrower and visually read like a one-way street.
- Curb extensions will discourage wrong-way turns.

# WRONG WAY TRAFFIC

Signage is faded and hard to read and should be located opposite driver.

Long Term:  
Signage will be improved.

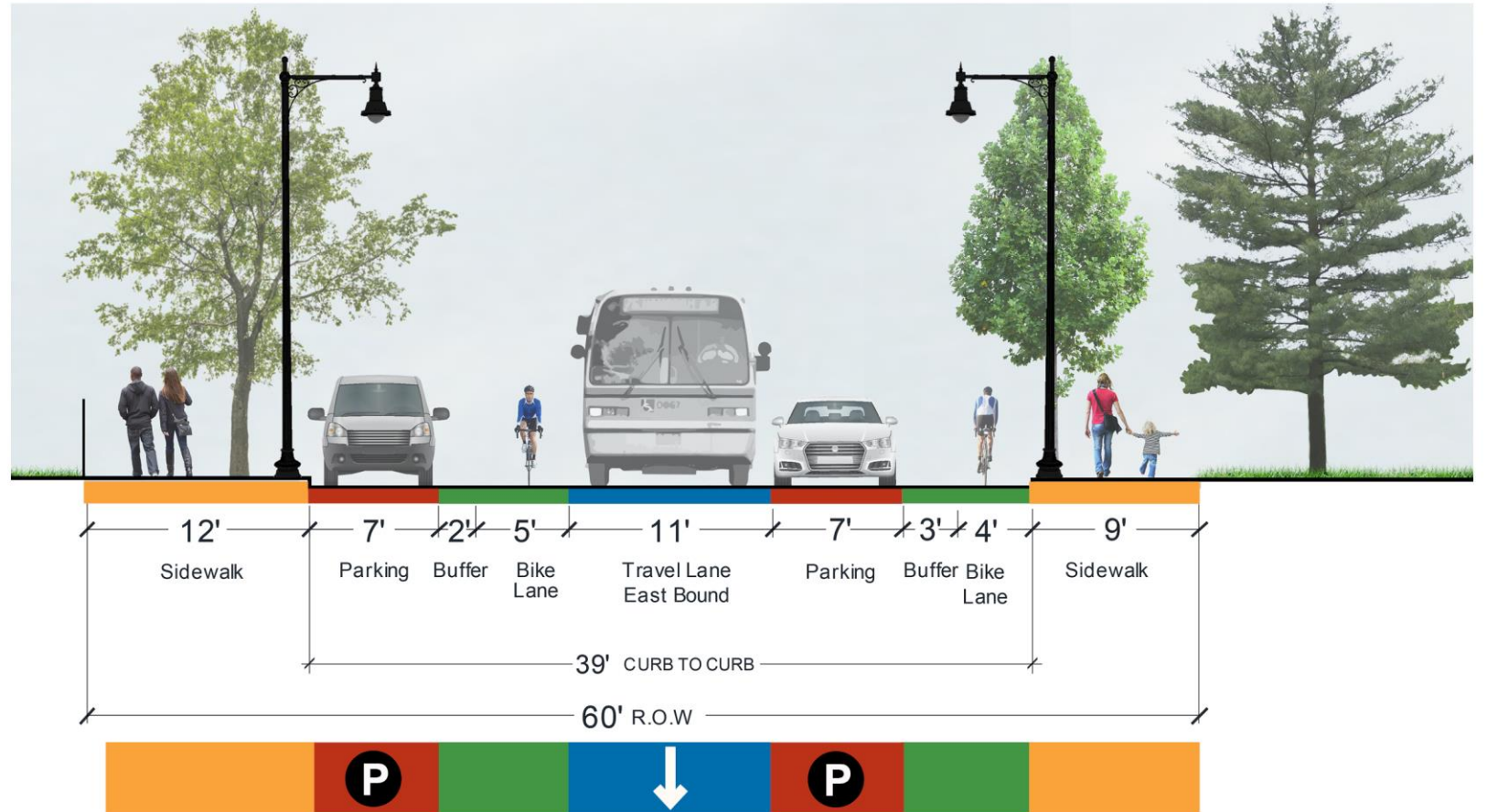
Short Term: BTD  
will evaluate any  
signage  
improvements that  
can be done now.



# LANE CONFIGURATION

## COMMENT:

Consider placing the bike lane outside of the parking lane. We are concerned about people getting in and out of cars next to travel lane.



Proposed Cross-Section

# LANE CONFIGURATION

## RESPONSE:

Parking protected bike lanes are only located where there is adequate space. Research indicates that protected bike lanes are safer for bicyclists, pedestrians and motorists.



# ENFORCEMENT OF PARKING RESTRICTIONS

## COMMENT:

Please enforce the parking restrictions.

## RESPONSE:

Parking on Ruggles is unrestricted. Parking in resident only zones can be enforced. We will work with BTM on enforcement now and after the project is built.





# TRAFFIC CALMING

## COMMENT:

We reiterate support for traffic calming (i.e., raised intersections, signage) and would like to see more done if possible.



# TRAFFIC CALMING

## RESPONSE:

Traffic calming features have been added:

- Raised intersection at Raynor Circle/Choice Way



- All side street crossings are raised



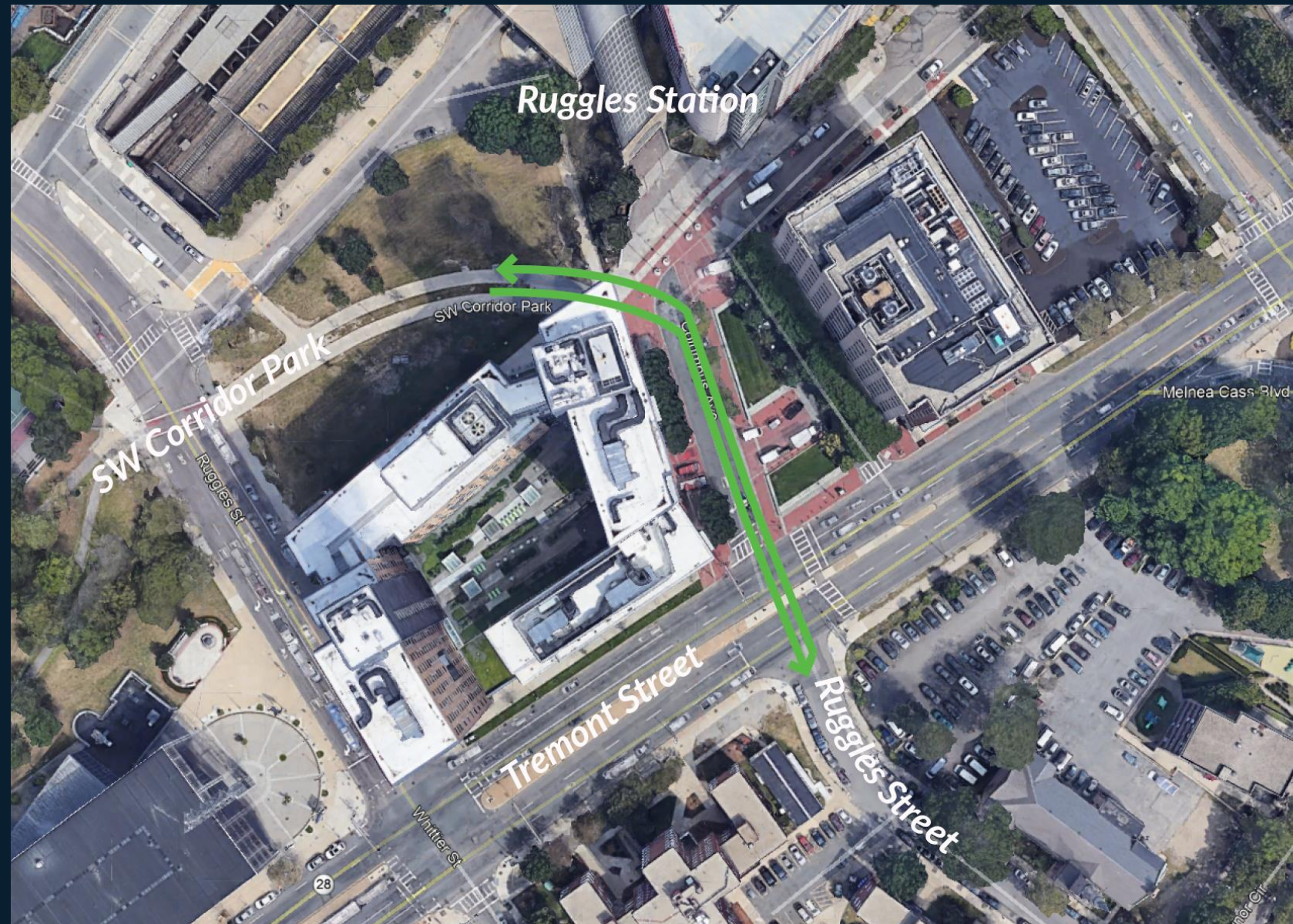
# DESIGN UPDATE: Raised Protected Bike Lanes

Protected bike lanes will be constructed at sidewalk level from Dewitt to Tremont in the contra-flow direction.



# DESIGN UPDATE: Connection to Southwest Corridor

A bike connection from Ruggles Street to the Southwest Corridor Park has been added.



# DESIGN UPDATE: Art Opportunities

## Status of Public Art

**Dewitt Playground.** Arts Commission has put out their call for art in the Dewitt Playground and is going through the process of short-listing and interviewing artists to bring someone on board soon.



Edward Everett Square, Dorchester

**Ruggles / Tremont Gateway.** The Arts Commission also plans on putting out the RFP for the art at the Ruggles/Tremont gateway art piece hopefully by the end of the year.

# DESIGN UPDATE: Art Opportunities

- There will be an art element in the Ruggles Streetscape.
- Give us input what you would like to see at the Art Station.



# PROJECT SCHEDULE:

---

## PHASE

## TIMING

**25% Plan Submitted.....June 2019**

**Final Plans.....Winter 2019 / 2020**

**Advertise / Bidding.....Winter 2020**

**Construction.....Summer 2020**

# DISCUSSION

## Visit 3 Stations

- Traffic Flow
- Street Design
- Art Opportunities



Contact: Zach Wassmouth, Boston Public Works Department  
Zachary.Wassmouth@boston.gov  
<https://www.boston.gov/departments/public-works/ruggles-street-project>