

THUROW - WONG RESIDENCE

52 E SPRINGFIELD ST, BOSTON, MA 02118

ANDERSON
PORTER
DESIGN

PROJECT SCOPE:

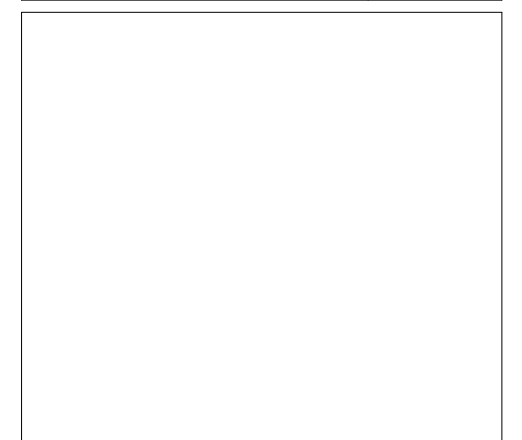
1. REPLACEMENT OF EXISTING NON-HISTORIC VINYL WINDOWS WITH NEW ALUMINUM CLAD WINDOWS WITH INTEGRATED MUNTINS, ILLUSTRATING 2 OVER 2 DIVIDED LITES.
2. REPLACEMENT OF GARDEN LEVEL ENTRY DOOR, NEW DOOR TO BE DESIGNED IN-KIND.
3. REPAIR/REPLACEMENT OF SHINGLES AT DORMER WALLS.
4. REPAIRS TO ENTRYWAY CANOPY. ANY DAMAGED PIECES TO BE REPLACED IN-KIND.



NOT FOR CONSTRUCTION

SCHEMATIC DESIGN

| ISSUED | |
|-------------|------|
| DESCRIPTION | DATE |
| | |
| | |
| | |
| | |
| | |
| | |
| | |
| | |
| | |



AndersonPorterDesign
1972 Massachusetts Ave, 4th Floor
Cambridge, MA 02140
Tel. 617.354.2501 Fax. 617.354.2509

Project:
THUROW - WONG RESIDENCE
Address:
52 E SPRINGFIELD STREET
BOSTON, MA 02118

Title:
COVER SHEET

| | |
|---|------------|
| Drawing Issued By: ANDERSON PORTER DESIGN | |
| Project #: | 2421 |
| Date: | 2025.01.13 |
| Scale: | |
| Drawn by: | Author |
| G0.1 | |

NOT FOR CONSTRUCTION

SCHEMATIC DESIGN

| ISSUED | |
|-------------|------|
| DESCRIPTION | DATE |
| | |
| | |
| | |
| | |
| | |
| | |
| | |
| | |
| | |
| | |

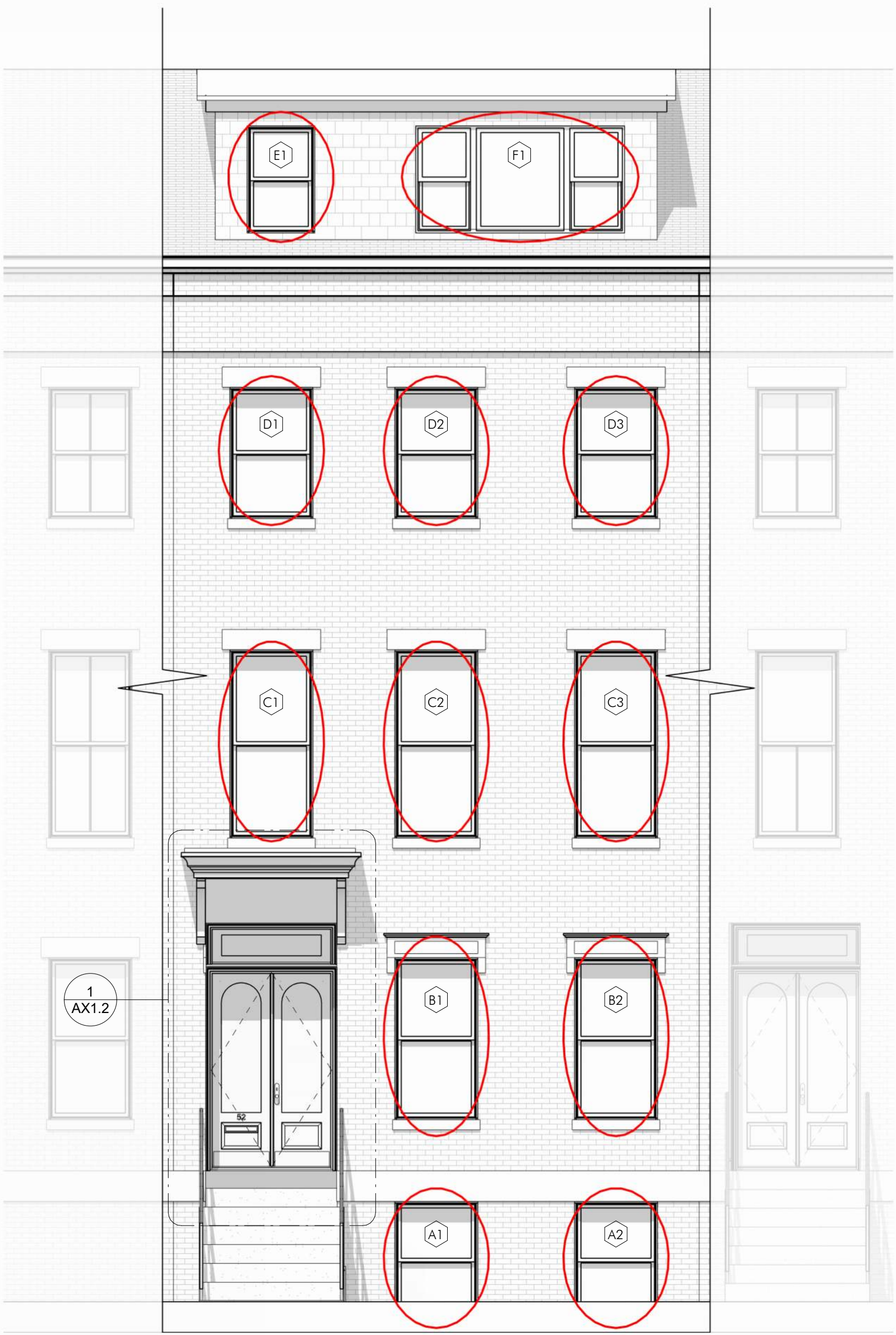
AndersonPorterDesign
1972 Massachusetts Ave, 4th Floor
Cambridge, MA 02140
Tel. 617.354.2501 Fax. 617.354.2509

Project:
THUROW - WONG RESIDENCE

Address:
52 E SPRINGFIELD STREET
BOSTON, MA 02118

Title:
EXISTING CONDITIONS

| | |
|--------------------|------------------------|
| Drawing Issued By: | ANDERSON PORTER DESIGN |
| Project #: | 2421 |
| Date: | 2025.01.13 |
| Scale: | 1/4" = 1'-0" |
| Drawn by: | DS |



1 EXISTING SOUTH ELEVATION
1/4" = 1'-0"

NOT FOR CONSTRUCTION

SCHEMATIC DESIGN

| ISSUED | |
|-------------|------|
| DESCRIPTION | DATE |
| | |
| | |
| | |
| | |
| | |
| | |
| | |
| | |
| | |
| | |

AndersonPorterDesign
1972 Massachusetts Ave, 4th Floor
Cambridge, MA 02140
Tel. 617.354.2501 Fax. 617.354.2509

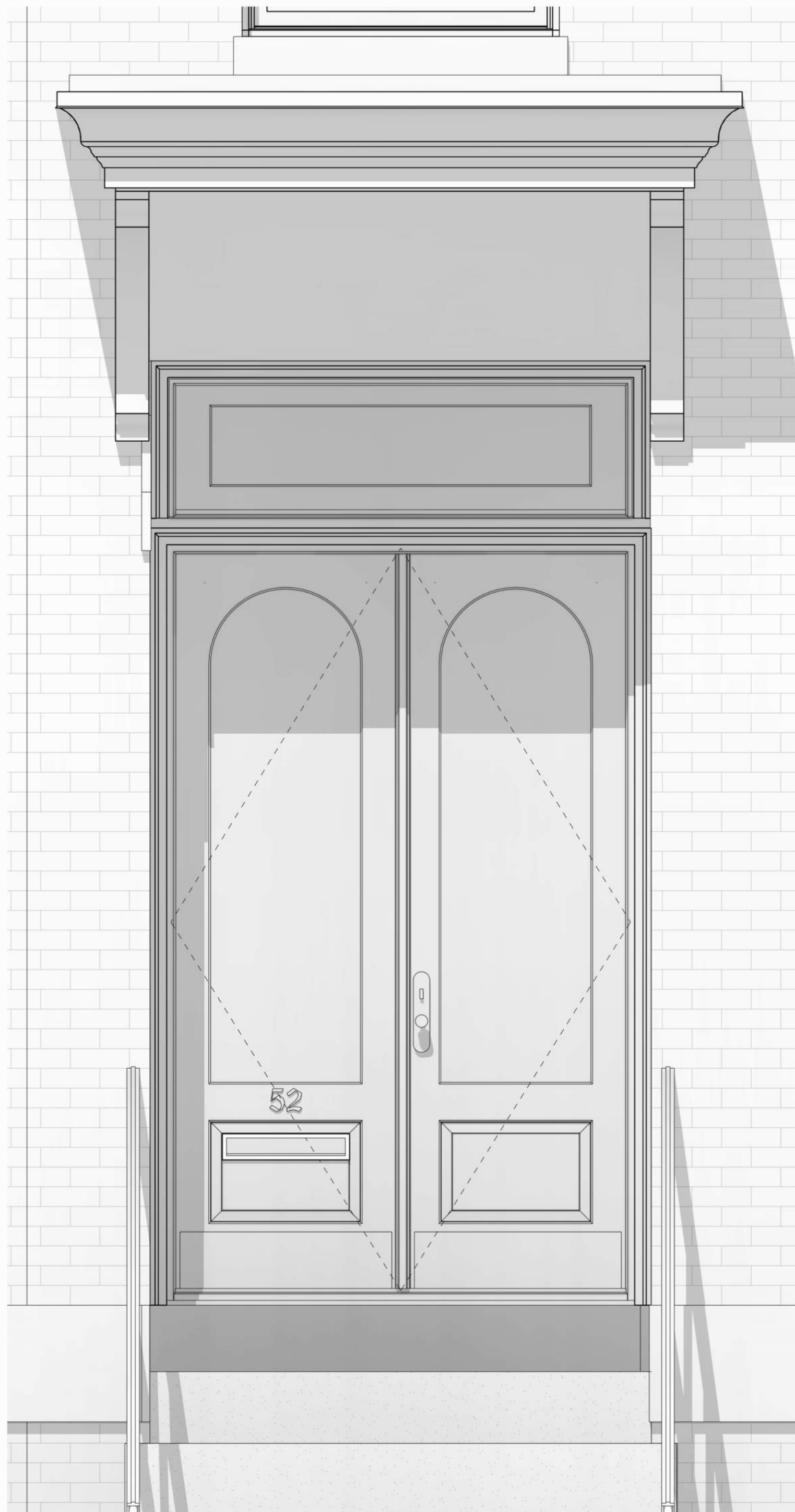
Project:
THUROW - WONG RESIDENCE

Address:
**52 E SPRINGFIELD STREET
BOSTON, MA 02118**

Title:
EXISTING CONDITIONS

Drawing Issued By: ANDERSON PORTER DESIGN

| | | | |
|------------|------------|-----------|--------------|
| Project #: | 2421 | Drawn No. | AX1.2 |
| Date: | 2025.01.13 | | |
| Scale: | 1" = 1'-0" | | |
| Drawn by: | DS | | |



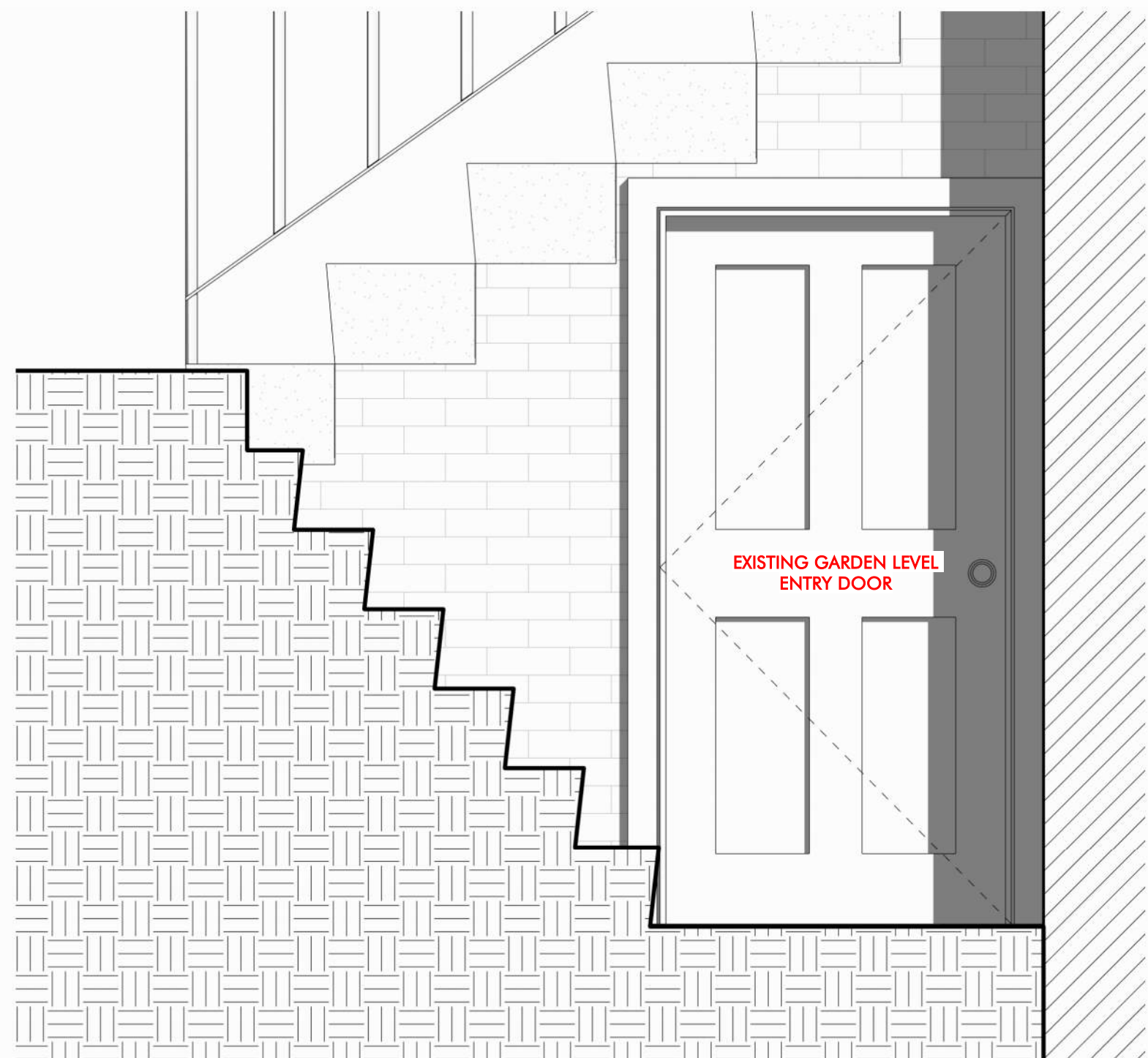
① ENLARGED VIEW @ EXISTING ENTRYWAY
1" = 1'-0"



EXAMPLE OF WATER DAMAGED SIDE DOOR



IMAGE OF SIDE DOOR



② EXISTING SECTION THROUGH LOWER STAIRS
1" = 1'-0"

NOT FOR CONSTRUCTION

SCHEMATIC DESIGN

| ISSUED | |
|-------------|------|
| DESCRIPTION | DATE |
| | |
| | |
| | |
| | |
| | |
| | |
| | |
| | |
| | |

AndersonPorterDesign
1972 Massachusetts Ave, 4th Floor
Cambridge, MA 02140
Tel. 617.354.2501 Fax. 617.354.2509

Project:
THUROW - WONG RESIDENCE
Address:
**52 E SPRINGFIELD STREET
BOSTON, MA 02118**

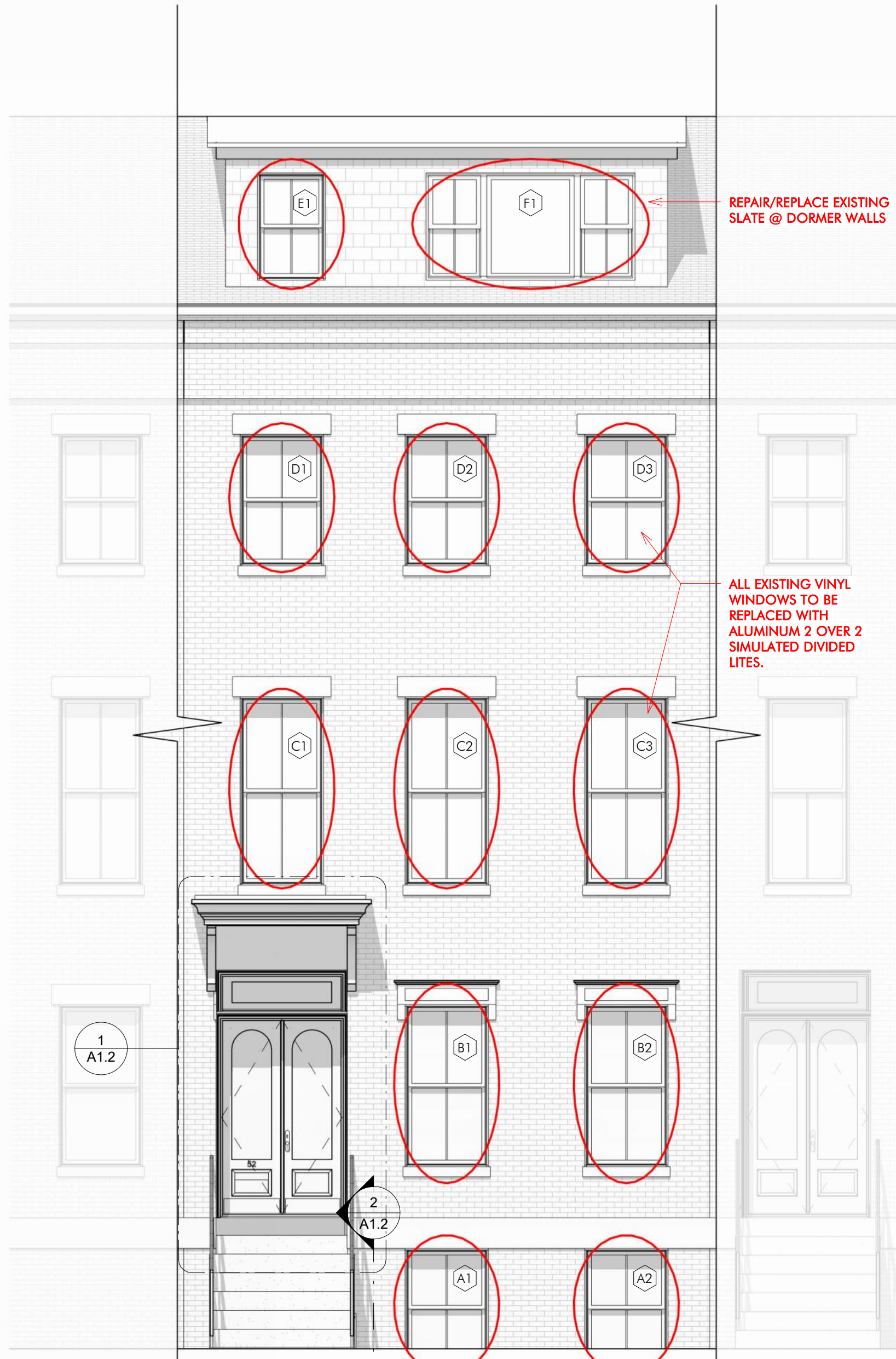
Title:
EXISTING CONDITIONS

| | | |
|--------------------|------------------------|--------------|
| Drawing Issued By: | ANDERSON PORTER DESIGN | |
| Project #: | 2421 | Drawn No. |
| Date: | 2025.01.13 | AX1.3 |
| Scale: | | |
| Drawn by: | DS | |



SCOPE OF WORK - REPLACEMENT OF ALL NON-HISTORIC VINYL WINDOWS WITH ALUMINUM CLAD EXTERIOR/WOOD INTERIOR WITH SIMULATED DIVIDED LIGHTS

NOT FOR CONSTRUCTION



SCHEMATIC DESIGN

| ISSUED | |
|-------------|------|
| DESCRIPTION | DATE |
| | |
| | |
| | |
| | |
| | |
| | |
| | |
| | |
| | |

AndersonPorterDesign
1972 Massachusetts Ave, 4th Floor
Cambridge, MA 02140
Tel. 617.354.2501 Fax. 617.354.2509

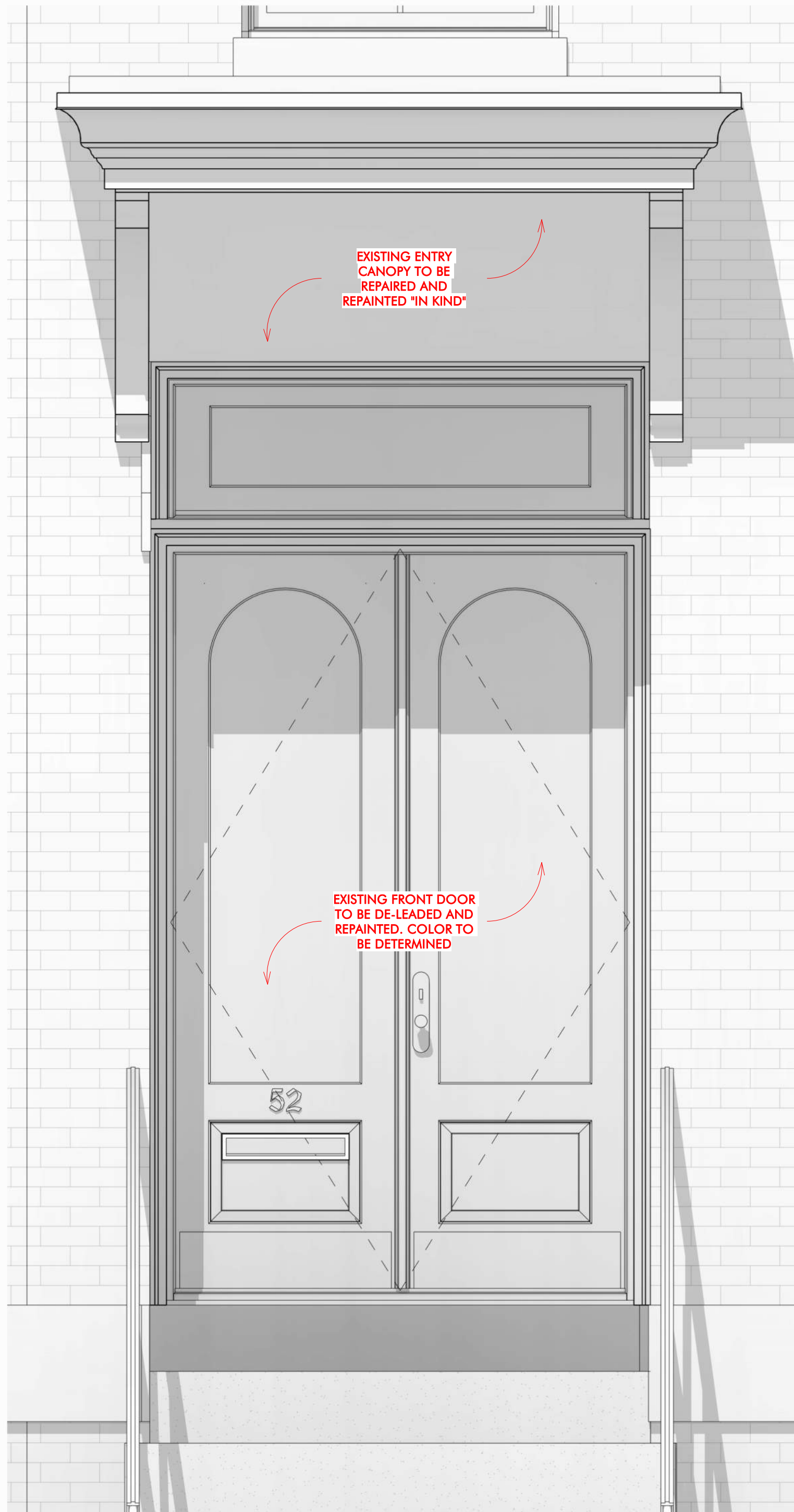
Project:
THUROW - WONG RESIDENCE
Address:
**52 E SPRINGFIELD STREET
BOSTON, MA 02118**

Title:
PROPOSED CONDITIONS

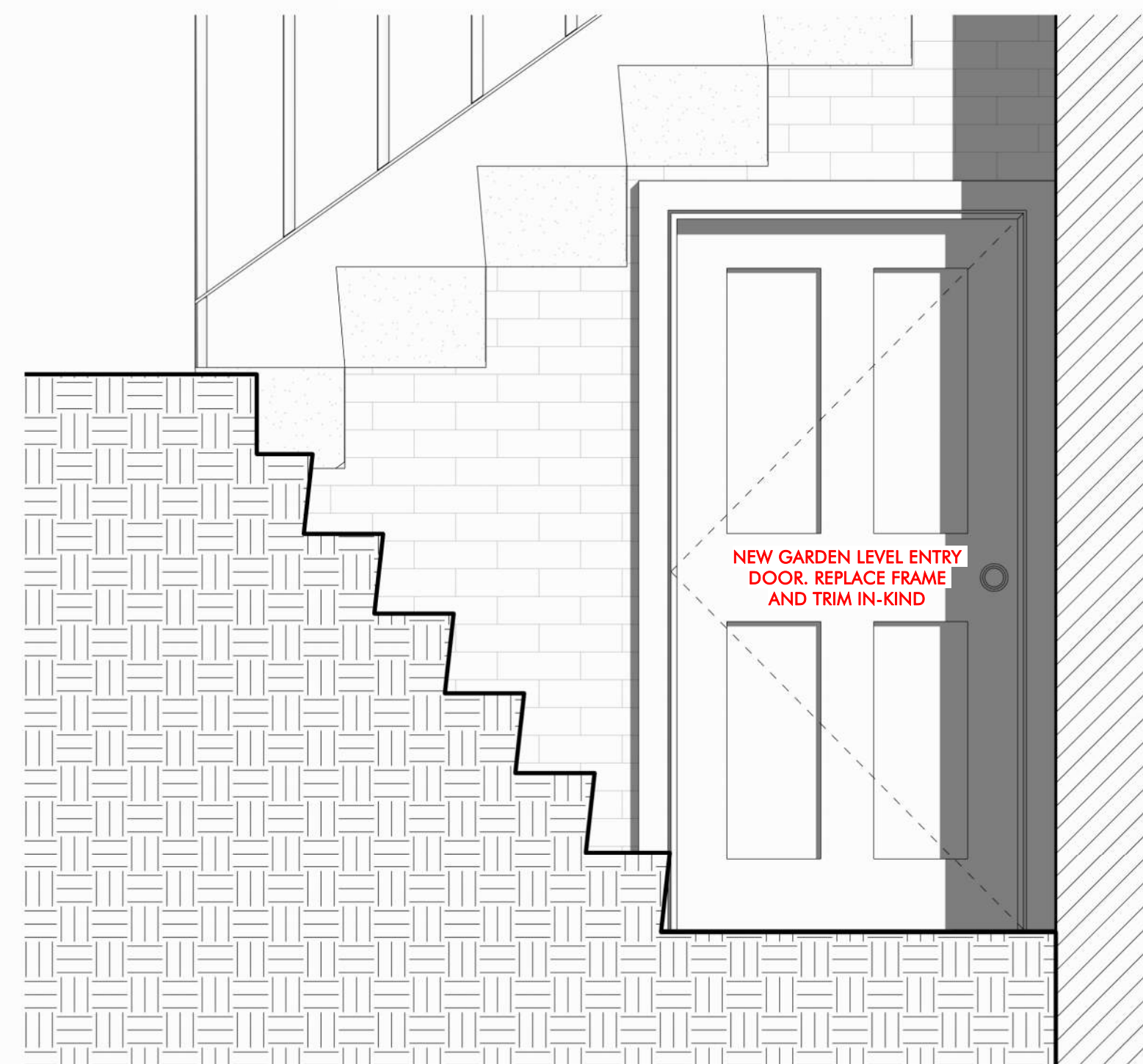
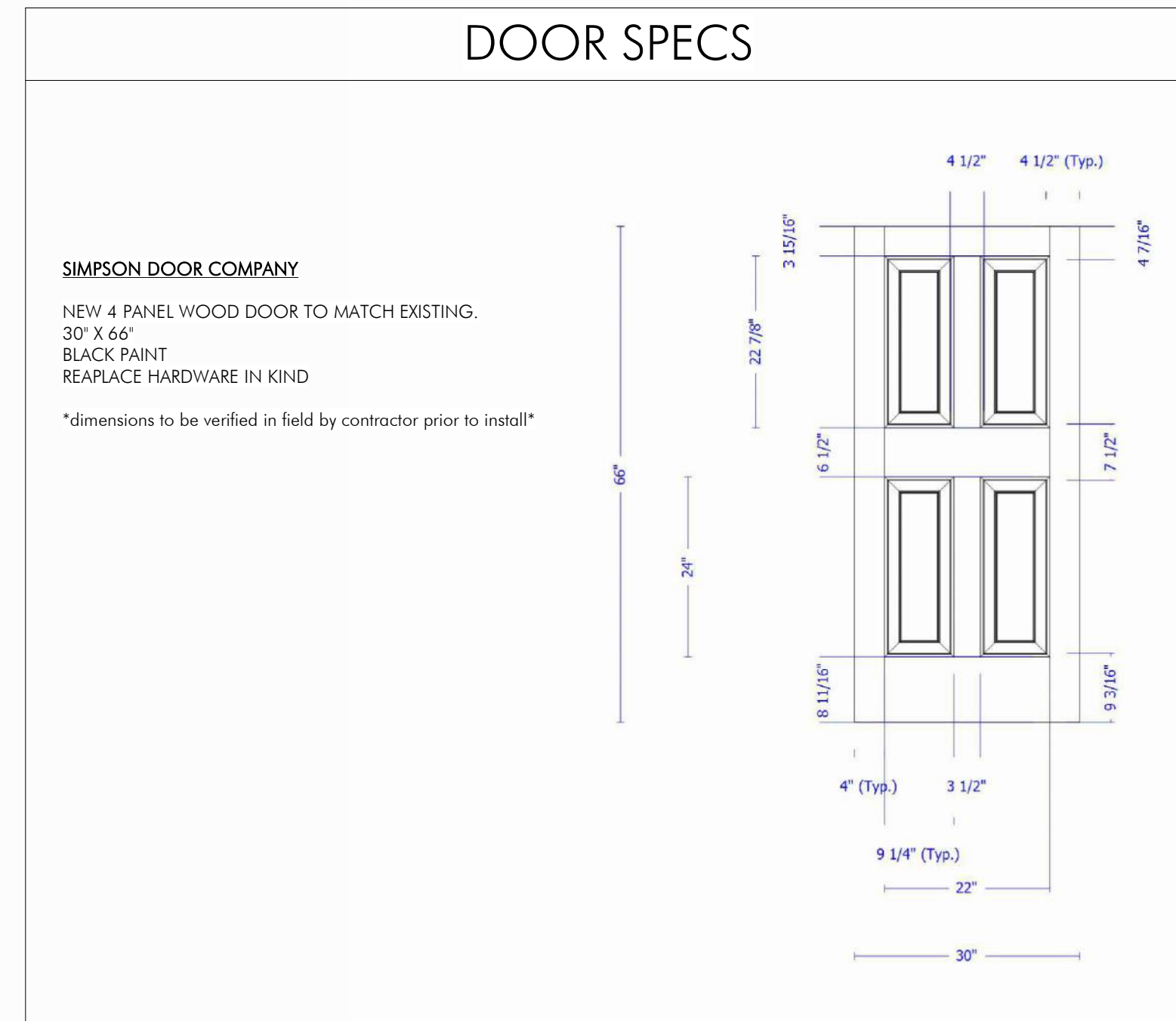
| | | |
|--------------------|------------------------|-------------|
| Drawing Issued By: | ANDERSON PORTER DESIGN | |
| Project #: | 2421 | Drawn No. |
| Date: | 2025.01.13 | A1.1 |
| Scale: | 1/4" = 1'-0" | |
| Drawn by: | DS | |

1 PROPOSED SOUTH ELEVATION
1/4" = 1'-0"

NOT FOR CONSTRUCTION



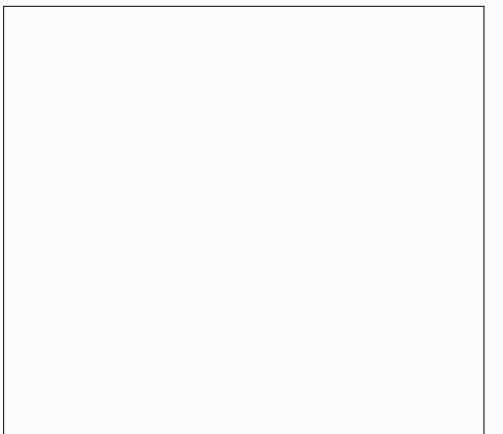
1 ENLARGED VIEW @ PROPOSED ENTRYWAY
1" = 1'-0"



2 PROPOSED SECTION THROUGH LOWER STAIRS
1" = 1'-0"

SCHEMATIC DESIGN

| ISSUED | |
|-------------|------|
| DESCRIPTION | DATE |
| | |
| | |
| | |
| | |
| | |
| | |
| | |
| | |
| | |
| | |



AndersonPorterDesign
1972 Massachusetts Ave, 4th Floor
Cambridge, MA 02140
Tel. 617.354.2501 Fax. 617.354.2509

Project:
THUROW - WONG RESIDENCE
Address:
52 E SPRINGFIELD STREET
BOSTON, MA 02118

Title:
PROPOSED CONDITIONS

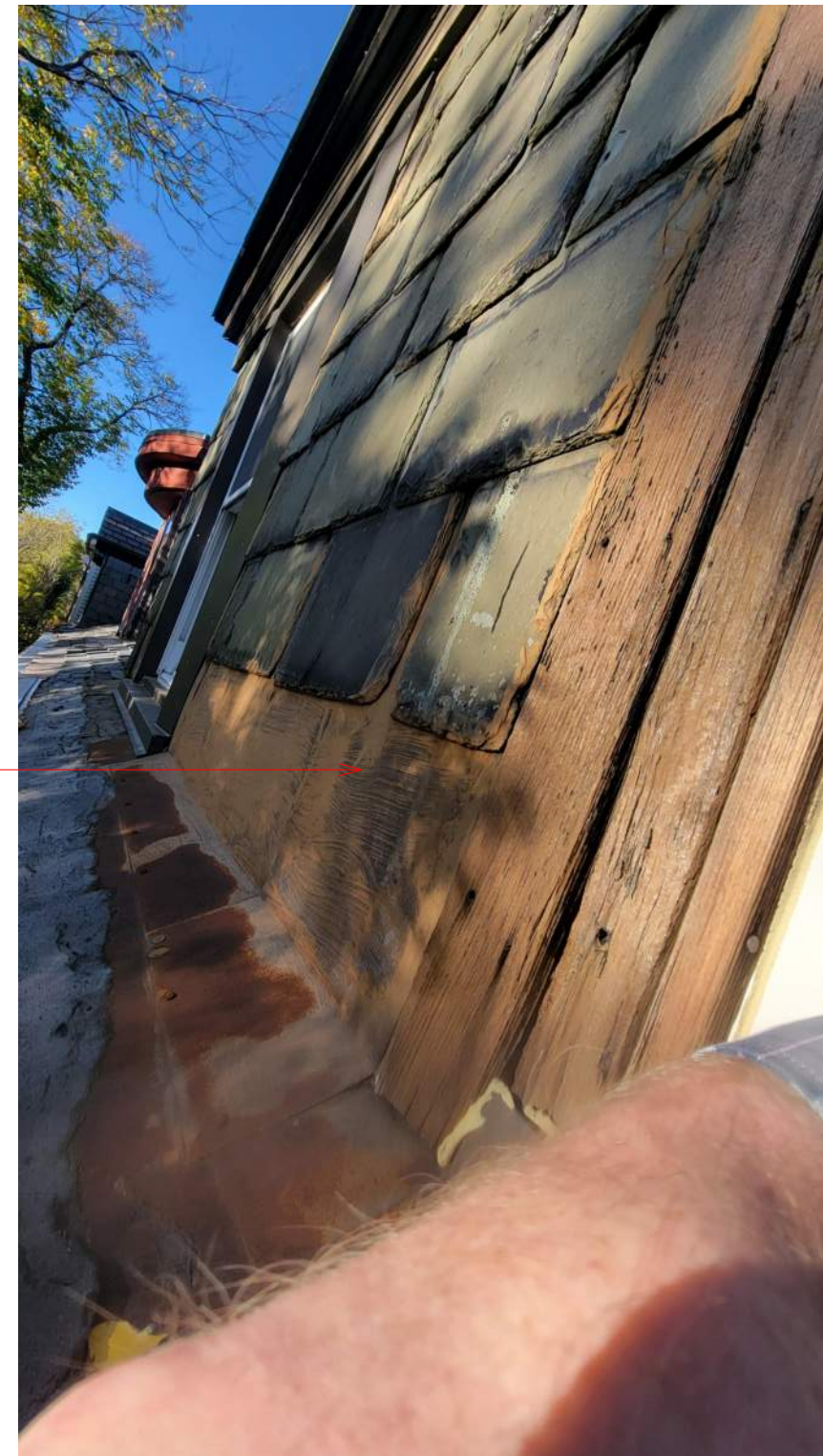
Drawing Issued By: ANDERSON PORTER DESIGN
Project #: 2421
Date: 2025.01.13
Scale: 1" = 1'-0"
Drawn by: DS

Drawn No.
A1.2

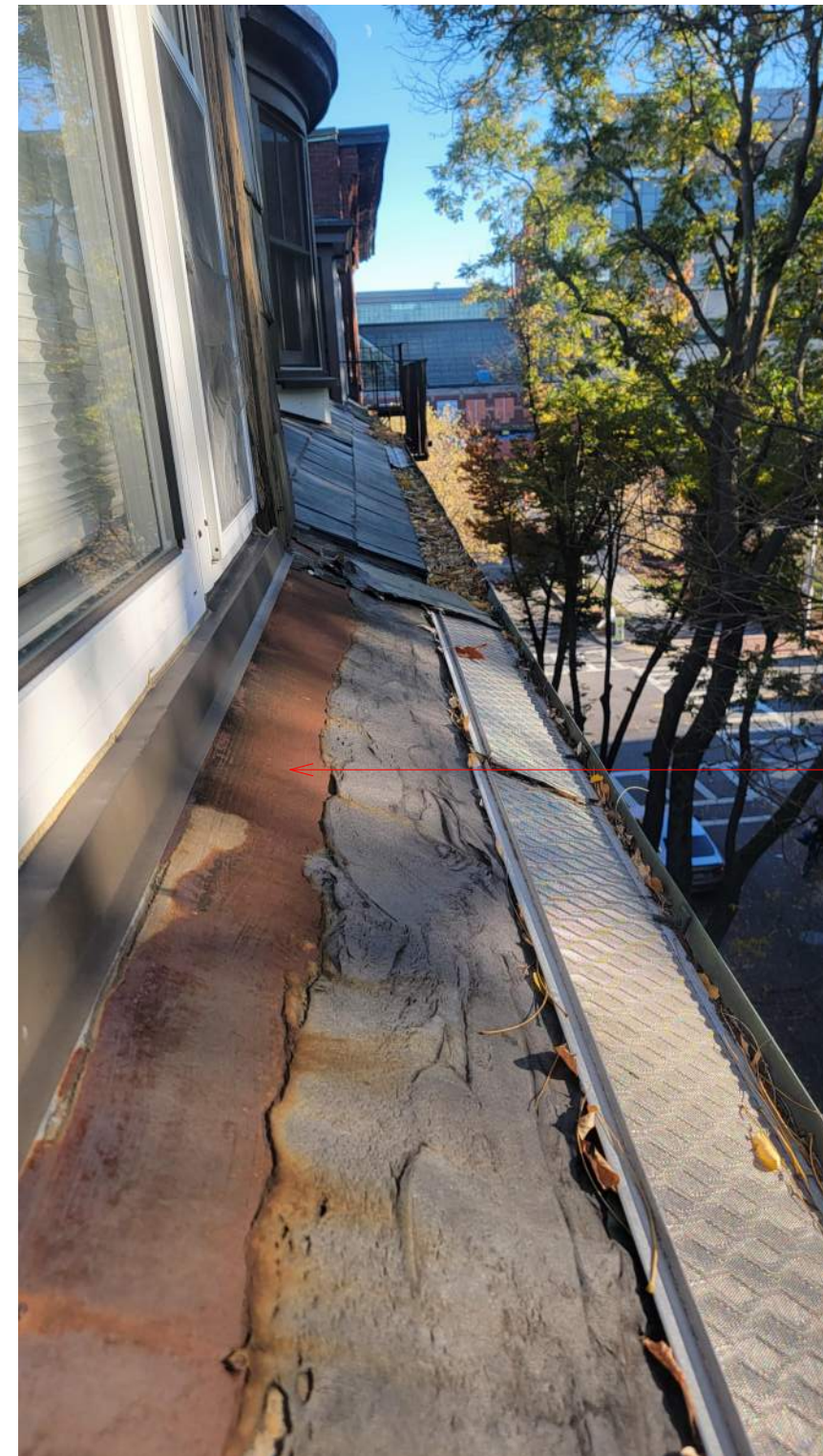
NOT FOR CONSTRUCTION

SCHEMATIC DESIGN

REPLACE EXISTING SLATE SIDING AT DORMER WITH "DAVINCI PROVINCE SYNTHETIC SLATE" IN "SLATE GRAY" COLOR



REPLACE RUSTED COPPER FLASHING



VIEWS OF EXTERIOR SLATE SIDING OUTSIDE OF DORMER WINDOWS

SYNTHETIC SLATE SHINGLE SPECS



Introducing
DAVINCI PROVINCE SLATE

DaVinci Province™ Slate is a new line of stunning single-width composite tile replicating traditional slate with extraordinary accuracy. Delivered, of course, with the enduring beauty and protection that DaVinci has long been known for.

HISTORY in the making.
12" wide Province Slate shingles are based on similar ones found on historic homes that have dotted the New England landscape for centuries. We've combined this inspiration with the kind of innovation that puts Province Slate head and shoulders above natural slate when it comes to durability, maintenance and weather resistance.

SINGLE-WIDTH with multiple benefits.
All of this makes Province Slate an ideal choice for any climate. It's ready to stand strong against everything from seaside salt air to mountainside snow and wind—and look great doing it. Even better? The self-aligning single-width tiles allow for quick installation, at a price competitive with architectural asphalt and other high-end roofing options.

Modeled after natural slate, Province Slate tiles have a natural, non-sagging heft. Each tile is made using organic resins fortified with proprietary UV stabilizers to ensure a look that lasts.

We've gone back to the past to ensure a beautiful future for your home.
Province Slate tiles add the classic look of authentic slate to any residence. Just as important, low maintenance makes life easier. Homestones and fade-resistant color stability assures long-lasting beauty.

**WHAT'S NEW UNDER THE SUN?
A HISTORY-MAKING, WEATHER-DEFYING
COMPOSITE SLATE TILE FROM DAVINCI.**

DAVINCI PROVINCE SLATE SPECIFICATIONS

| LENGTH | WIDTH | THICKNESS |
|---------|-------|-----------|
| 11 1/2" | 12" | 3/8" |

Final 4" exposure

12"

11 1/2"

3/8"

USA

ALSO AVAILABLE IN CANADA, MEXICO & EUROPE

DAVINCI

COUNT ON WHAT'S INSIDE
to protect you from what's outside.

DaVinci is the recognized leader in composite roofing. Our unique formulations and fine-tuned manufacturing processes are put to the test every day—and continually come out on top. Whether the challenge comes from wind and hail or insects and algae, rest assured that Province Slate has you safely covered with a Lifetime Limited Materials Warranty.

| | ASPHALT | NATURAL SLATE | NATURAL SHALE |
|---------------------|---------|---------------|---------------|
| WIND WEARABILITY | ● | ● | ● |
| WEATHER RESISTANCE | ● | ● | ● |
| INTEGRITY | ● | ● | ● |
| PROTECTIVE WEAR | ● | ● | ● |
| MOISTURE RESISTANCE | ● | ● | ● |
| UV RESISTANCE | ● | ● | ● |
| ALGAE RESISTANCE | ● | ● | ● |
| INSECT RESISTANCE | ● | ● | ● |
| WARRANTY | ● | ● | ● |

STRENGTH ● AVERAGE ● WEAKNESS ●

Class A Fire, Class 4 Impact rated, 120 MPH Wind Uplift, 100 Year Life, Wind and Building Codes pending.

DAVINCI ROOFSCAPES
13890 West 101st Street | Lenexa, Kansas 66215 | 800-328-4624
DAVINCIROOFSCAPES.COM

Westlake
Royal Building Products™

©2022 Westlake DaVinci Roofscapes, LLC. Pricing representative of what shown in this brochure may vary from actual product. For product warranty details please visit DVRoof.com/warranty. The warranty listed above is the sole warranty applicable to DaVinci products.

AndersonPorterDesign
1972 Massachusetts Ave, 4th Floor
Cambridge, MA 02140
Tel. 617.354.2501 Fax. 617.354.2509

Project:
THUROW - WONG RESIDENCE
Address:
**52 E SPRINGFIELD STREET
BOSTON, MA 02118**

Title:
PROPOSED CONDITIONS

Drawing Issued By: ANDERSON PORTER DESIGN

| | | | |
|------------|------------|-----------|--|
| Project #: | 2421 | Drawn No. | |
| Date: | 2025.01.13 | | |
| Scale: | | | |
| Drawn by: | Author | | |

A1.3

NOT FOR CONSTRUCTION



VIEW OF FRONT DOOR ENTRYWAY



VIEW OF SIDE DOOR GARDEN LEVEL ENTRY



EXAMPLE OF WATER
DAMAGED SIDE DOOR



EXISTING BRASS ADDRESS
AND MAIL SLOT TO BE
BUFFED AND POLISHED.



EXAMPLE OF
PEELING/CHIPPING PAINT



EXISTING BRASS FRONT DOOR
KNOB, TO BE BUFFED AND
POLISHED (OR REPLACED?)

SCHEMATIC DESIGN

| ISSUED | |
|-------------|------|
| DESCRIPTION | DATE |
| | |
| | |
| | |
| | |
| | |
| | |
| | |
| | |
| | |

AndersonPorterDesign
1972 Massachusetts Ave, 4th Floor
Cambridge, MA 02140
Tel. 617.354.2501 Fax. 617.354.2509

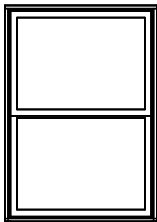
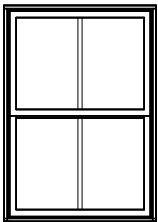
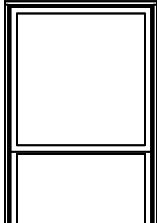
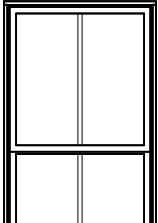
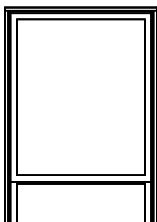
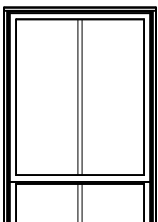
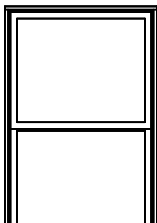
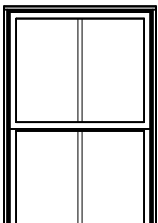
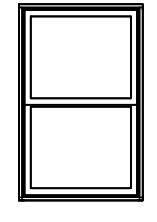
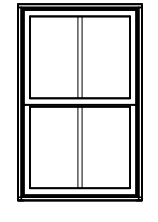
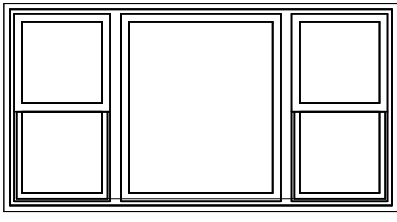
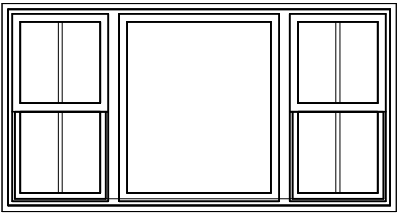
Project:
THUROW - WONG RESIDENCE
Address:
**52 E SPRINGFIELD STREET
BOSTON, MA 02118**

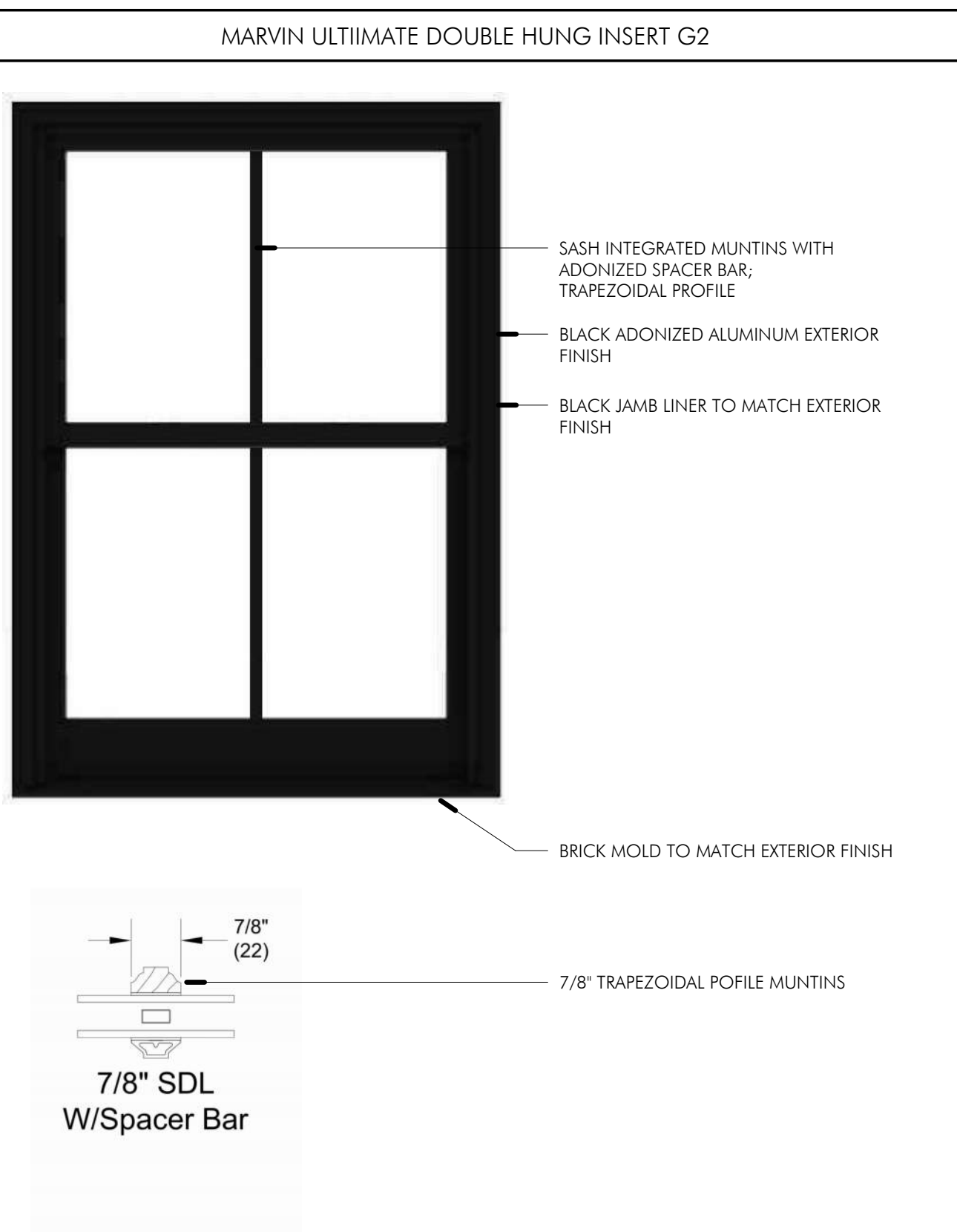
Title:
PROPOSED CONDITIONS

| | |
|--------------------|------------------------|
| Drawing Issued By: | ANDERSON PORTER DESIGN |
| Project #: | 2421 |
| Date: | 2025.01.13 |
| Scale: | |
| Drawn by: | Author |
| Drawn No.: | A1.4 |

WINDOW TYPES

WINDOW CUT SHEETS

| | EXISTING CONDITION | | PROPOSED CONDITION |
|--|--|---|---|
|  A GARDEN LEVEL WINDOWS | 3' - 2" x 4' - 6" SINGLE HUNG WHITE VINYL WINDOW |  A GARDEN LEVEL WINDOWS (2 WINDOWS) | 3' - 2" x 4' - 6" DOUBLE HUNG BLACK ALUMINUM EXTERIOR/ WOOD INTERIOR WINDOW WITH SASH INTEGRATED SIMULATED DIVIDED LIGHTS AND SPACER BAR |
|  B FIRST FLOOR WINDOWS | 3' - 2" x 6' - 2" SINGLE HUNG WHITE VINYL WINDOW |  B FIRST FLOOR WINDOWS (2 WINDOWS) | 3' - 2" x 6' - 2" DOUBLE HUNG BLACK ALUMINUM EXTERIOR/ WOOD INTERIOR WINDOW WITH SASH INTEGRATED SIMULATED DIVIDED LIGHTS AND SPACER BAR |
|  C SECOND FLOOR WINDOWS | 3' - 2" x 7' - 2" SINGLE HUNG WHITE VINYL WINDOW |  C SECOND FLOOR WINDOWS (3 WINDOWS) | 3' - 2" x 7' - 2" DOUBLE HUNG BLACK ALUMINUM EXTERIOR/ WOOD INTERIOR WINDOW WITH SASH INTEGRATED SIMULATED DIVIDED LIGHTS AND SPACER BAR |
|  D THIRD FLOOR WINDOWS | 3' - 2" x 5' - 0" SINGLE HUNG WHITE VINYL WINDOW |  D THIRD FLOOR WINDOWS (3 WINDOWS) | 3' - 2" x 5' - 0" DOUBLE HUNG BLACK ALUMINUM EXTERIOR/ WOOD INTERIOR WINDOW WITH SASH INTEGRATED SIMULATED DIVIDED LIGHTS AND SPACER BAR |
|  E FOURTH FLOOR WINDOWS (1) | 2' - 7" x 4' - 1" SINGLE HUNG WHITE VINYL WINDOW |  E FOURTH FLOOR WINDOWS (1) (1 WINDOW) | 2' - 7" x 4' - 1" DOUBLE HUNG BLACK ALUMINUM EXTERIOR/ WOOD INTERIOR WINDOW WITH SASH INTEGRATED SIMULATED DIVIDED LIGHTS AND SPACER BAR |
|  E FOURTH FLOOR WINDOWS (2) | 8' - 0" x 4' - 1" PICTURE WITH FLANKING SINGLE HUNGS WHITE VINYL WINDOW |  E FOURTH FLOOR WINDOWS (2) (1 WINDOW) | 8' - 0" x 4' - 1" PICTURE WITH FLANKING DOUBLE HUNG BLACK ALUMINUM EXTERIOR/ WOOD INTERIOR WINDOW WITH SASH INTEGRATED SIMULATED DIVIDED LIGHTS AND SPACER BAR |



NOT FOR CONSTRUCTION

SCHEMATIC DESIGN

| ISSUED | |
|-------------|------|
| DESCRIPTION | DATE |
| | |
| | |
| | |
| | |
| | |
| | |
| | |
| | |
| | |
| | |

AndersonPorterDesign
 1972 Massachusetts Ave, 4th Floor
 Cambridge, MA 02140
 Tel. 617.354.2501 Fax. 617.354.2509

Project:
THUROW - WONG RESIDENCE
 Address:
**52 E SPRINGFIELD STREET
 BOSTON, MA 02118**

Title:
SCHEDULES AND DETAILS

| | |
|--------------------|------------------------|
| Drawing Issued By: | ANDERSON PORTER DESIGN |
| Project #: | 2421 |
| Date: | 2025.01.13 |
| Scale: | 1/4" = 1'-0" |
| Drawn by: | Author |
| Drawn No.: | A6.1 |

1/10/2025 3:06:21 PM