



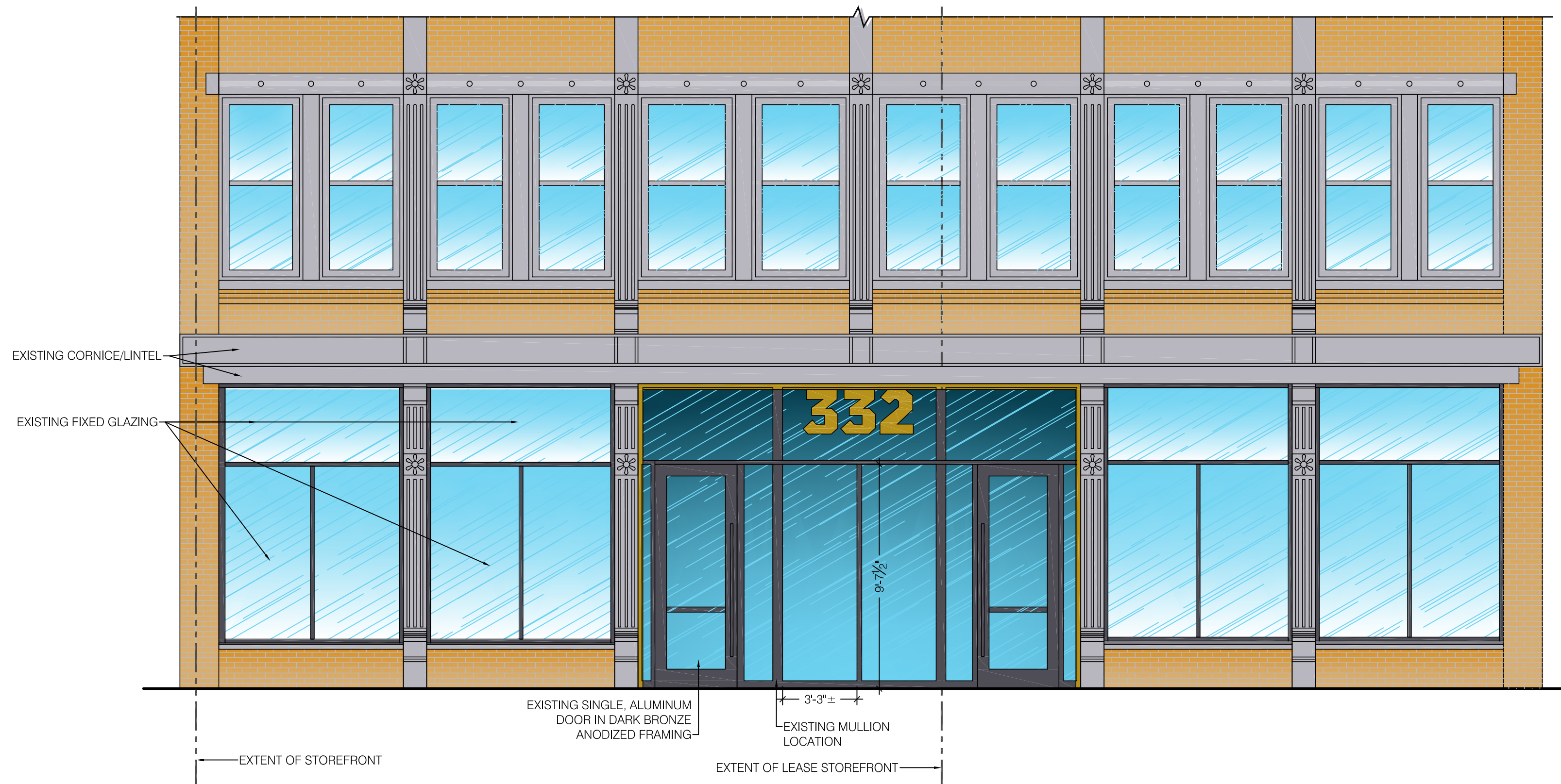
RETAIL/RESTAURANT
SPACE AVAILABLE

857.250.2981
THREASURES.COM

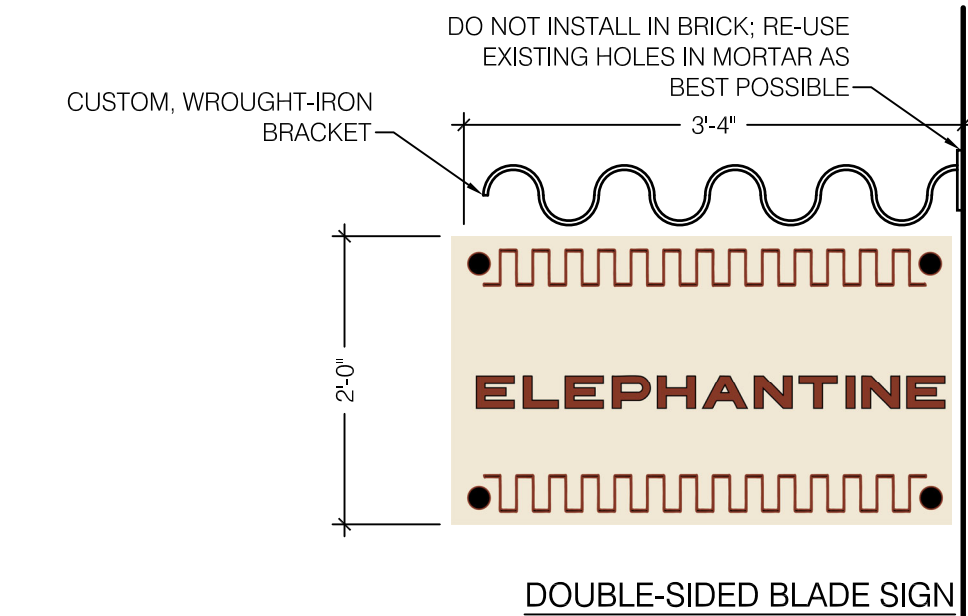
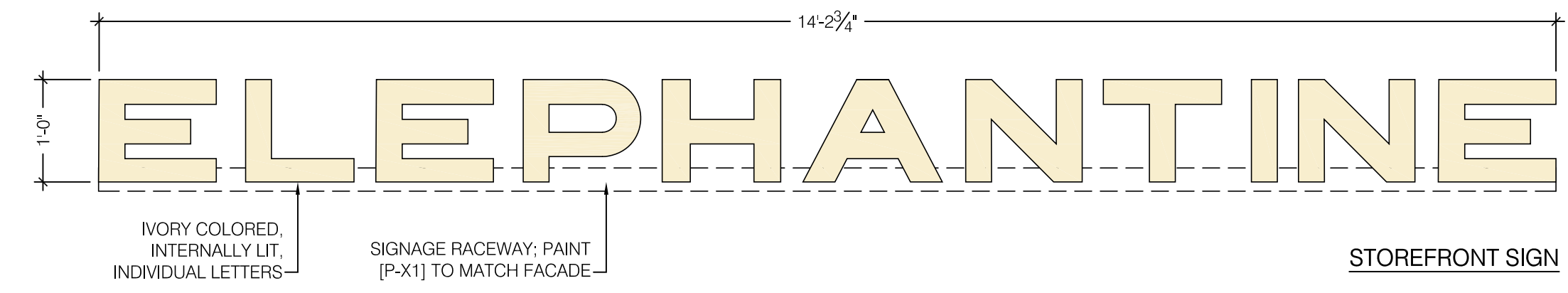


352

30



1 Existing Storefront Facade
1/4" = 1'-0"



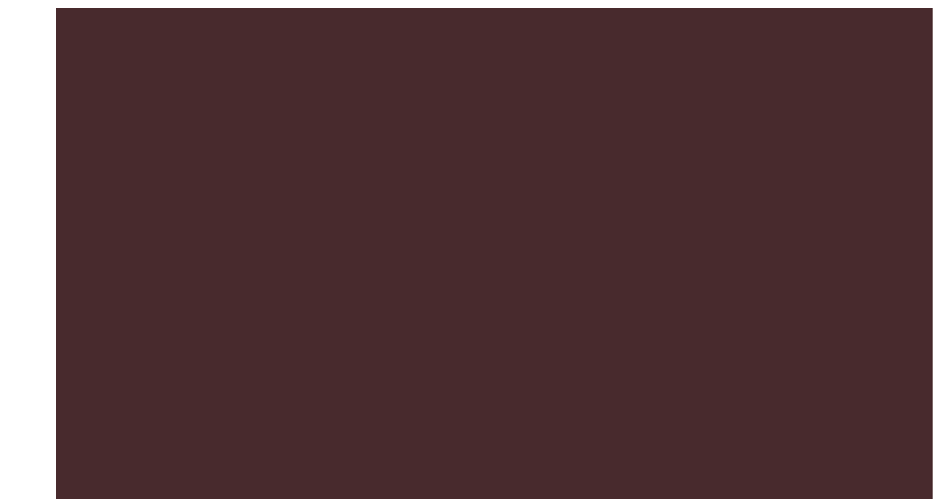
3 Proposed Signage
3/4" = 1'-0"



MANUFACTURER:
ZIO & SONS
MODEL: HAVANA LIGHT WALL
SCONCE IN DARK BRONZE W/
OPAL GLOBE SHADE
[OR SIMILAR]

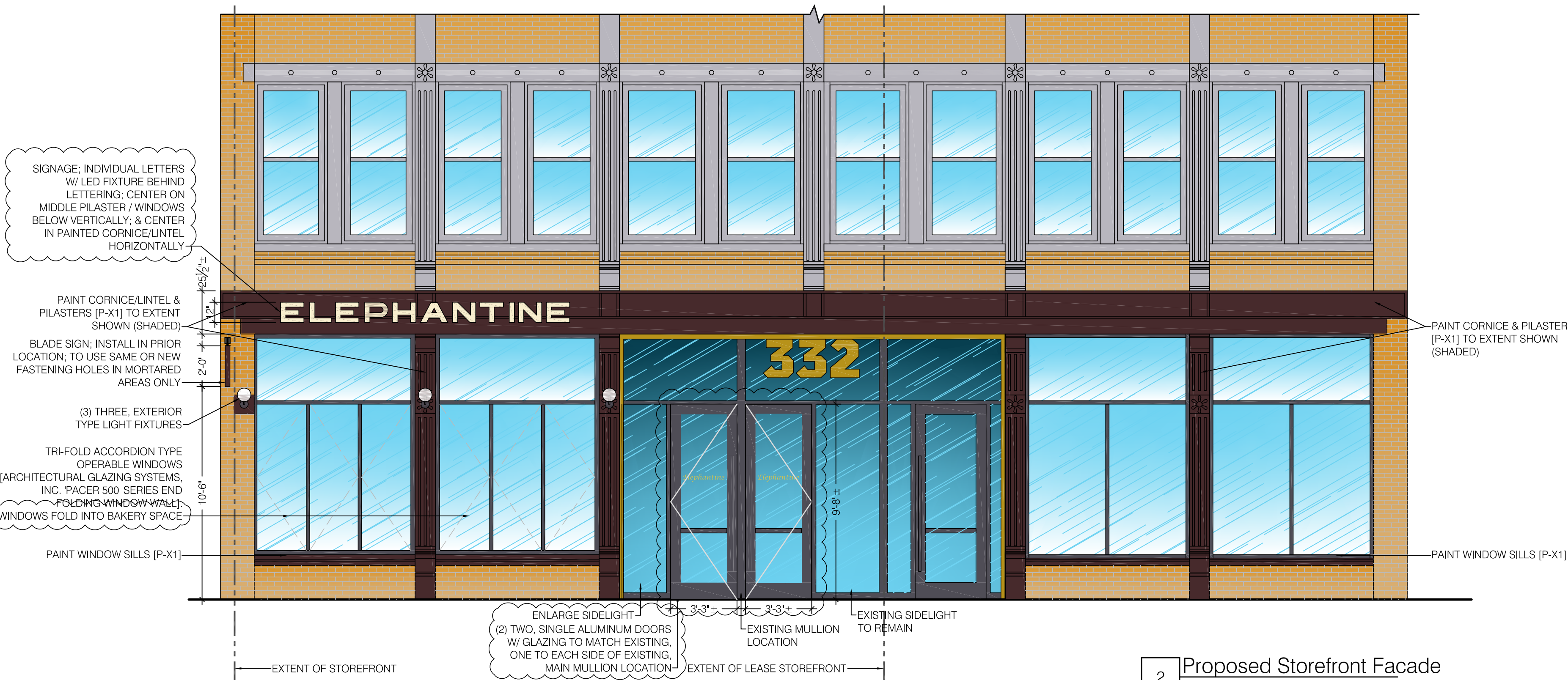
FACADE PAINT COLOR [P-X1]:
HEX CODE: 4B2A2D
AKA: BROWN COFFEE

MANUFACTURER:
RUSTOLEUM ULTRA GLOSS
KONA BROWN



4 Proposed Exterior Light Fixture
3" = 1'-0"

5 Proposed Exterior Paint Color [P-X1]
NTS



2 Proposed Storefront Facade
1/4" = 1'-0"



6 Existing Storefront

NOTES

PROJECT
Elephantine

Elephantine Bakery
332 Congress Street
Boston MA 02210

CLIENT
Elephantine Bakery
Farag Breads LLC
10 Commercial Alley
Suite 2
Portsmouth NH 03801-8804
Contact: Sherif Farag
Tel: 603.767.2428
E: sfarag@gmail.com

MEP ENGINEER
Building Engineering Resources, Inc.
66 Main Street
N. Easton MA 02556
T 508.230.0260
Fax: 508.230.0265
E: boris@buildingeng.com

STRUCTURAL

CONSULTANT

SCALE

2	01/23/25	FPCLD REVISIONS
1	12/09/24	FPCLD REVISED
	11/18/24	FPCLD SUBMISSION
	11/08/24	PERMIT
	8/7/24	LANDLORD REVIEW
NO	DATE	REVISION

R2 ARCHITECTS Inc.
508.744.4646
r2arch.com
91 Somerset Street
Plymouth, MA 02560

PROJECT MGR: JW
CHECKED BY: JW/RR
JOB NO: 23507
DRAWN BY: RR
SCALE: As Noted
DATE: 10.31.2024

JOB TITLE: FORT POINT LANDMARK DISTRICT SUBMISSION STOREFRONT FACADE
SHEET NO: LM-1.0

ACAD:PROJ_23507_Elephantine.Landmark_Comm.dwg Jun 20 2025 11:39 am BREEISS