

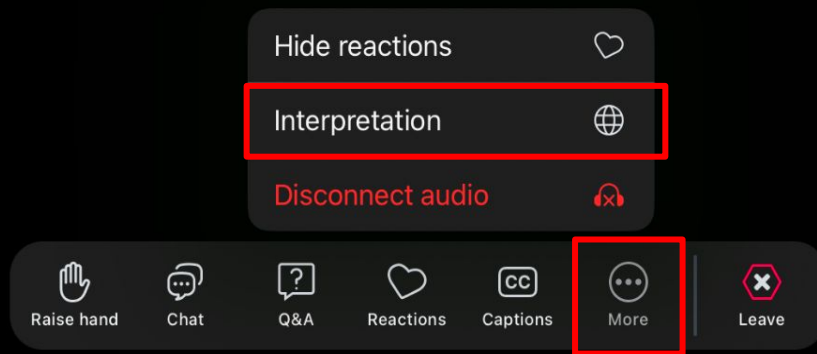
Attendee/Participant View

Setup - Before Webinar or Meeting

To ensure the best possible experience, please [update to the latest version of Zoom at this link](#).

During Webinar or Meeting

Look for the More (three dots) icon at the bottom of your screen. Select Interpretation (🌐) icon.





WASHINGTON IRVING RELOCATION AND CONSTRUCTION UPDATE

January 13, 2025



Mayor Michelle Wu



City of Boston
Public Facilities



BOSTON PUBLIC SCHOOLS

Capital Planning Team

DELAVERN STANISLAUS

Chief of Capital Planning

SARAH KING

Deputy Chief of Capital Planning

SUSANA HERNANDEZ MORGAN

Executive Director of Operations

Implementation

KATHERINE SANTIAGO

Senior Project Manager



CITY OF BOSTON
Public Facilities Team

DION IRISH *Chief of Operations*
CARLETON JONES *Executive Director*
ROHN MACNULTY *Deputy Director*
ELLEN MCDONOUGH *Chief of Staff*
MARQUIS MECA *Assistant Director*
THOMAS KAZMOUSKI *Project Manager*
MICHAEL BUCKLEY *Clerk of the Works*
CHRISTIAN HOWELL *Clerk of the Works*

AGENDA

- Relocation Sites
- Move Logistics
- Operational Logistics
- Construction Update
- Questions/Comments



WASHINGTON IRVING CONSTRUCTION UPDATES

The Irving building renovation project is at risk of significant timeline delays. To have the best chance to recover the construction timeline and meet substantial completion by the summer of 2025, we will be relocating Sumner upper students and staff who are currently at the Irving building.

Over the last several weeks, various teams across BPS and the City have been working to prepare the BCYF Roslindale and Sumner lower for this relocation.

We recognize that a mid-year move is challenging and have been working diligently to make this transition as smooth as possible.



RELOCATION SITES

- **SUMNER SCHOOL LOWER CAMPUS - 15 BASILE STREET**
 - Mr. Holland's 5th Grade Classroom
 - All Four 6th Grade Classrooms

- **BCYF ROSLINDALE - 4210 WASHINGTON STREET (BACK ENTRANCE)**
 - Remaining Three 5th Grade Classrooms (Ms. Coronel, Ms. Lanseigne and Ms. Conklin)
 - Administrative and support team members currently located at the Irving building

We are grateful to the BCYF Roslindale staff for their partnership in making their facility available for a temporary learning space that meets the Sumner school community's needs and to the Specialist staff at Sumner Lower for their flexibility.



MOVE LOGISTICS

□ MOVE TIMELINE

- Thursday, January 16th
 - Sumner Lower Internal Shifts
- Friday, January 17th - Monday, January 20th
 - Sumner Upper to Lower Campus and BCYF

□ PACKING/ UNPACKING SUPPORTS

- Boston Fire Department Cadets
 - One assigned to each impacted teacher for packing and unpacking
- Capital Planning team members on site throughout the week for support

□ SUMNER 5TH AND 6TH GRADE STUDENT FIELD TRIPS - 3 FIELD TRIPS

- Thursday, January 16th - West End House
- Friday, January 17th - West End House
- Tuesday, January 21st - The Beach House in Natick



OPERATIONAL LOGISTICS

□ SAFETY PLAN AT BCYF

- Students and staff will enter through a designated secure entrance.
- The same visitor check-in and check-out process used at the Irving building will be used at BCYF.
- A tap card system is being installed.
- There will be an intercom at the exterior entrance for visitors.
- We are developing an emergency protocol procedure for students & staff.

□ TRANSPORTATION

- The current Irving stop will be eliminated from the bus route.
- BPS Transportation will drop off and pick up all students at Sumner Lower (15 Basile Street).
- Bus students in classrooms at the BCYF Roslindale will have a Sumner staff member escort them to and from their bus.



OPERATIONAL LOGISTICS

□ DROP OFF & PICK-UP

- All 6th graders and one 5th grade classroom will be at Sumner lower (15 Basile Street)
- Three 5th grade classrooms will be at the BCYF Roslindale and will use the back entrance, located at 4210 Washington St, Roslindale.
 - This entrance will be only for Sumner students and staff.

□ BREAKFAST PLAN

- Free breakfast is available at the Sumner lower starting at 9:15 AM.
- Students at BCYF will have breakfast in their classrooms.

□ LUNCH AND RECESS PLAN

- Sumner students at BCYF will be walked by a Sumner staff member to and from 15 Basile Street.
- This means all students will have a hot lunch option.



OPERATIONAL LOGISTICS

□ SUMNER LOWER INTERNAL SHIFTS

- Several specialists at the lower campus will now do classroom push-in, including:
 - Dance
 - 1 of 2 Visual Arts (Ms. Lydon)
 - 1 of 2 Music teachers (TBD)
 - Reading and language support
- All 6th grade students have had a building orientation of the Sumner Lower Campus.
 - Each of the homerooms went over how to enter and exit and how to grab breakfast.
 - They saw their new classroom and went over expectations with Principal Welch
 - Mr. Holland's class will have an orientation on Wednesday this week.

□ BCYF ORIENTATION

- Principal Welch is planning to have an orientation for 5th grade students going to BCYF this Wednesday.



WASHINGTON IRVING CONSTRUCTION UPDATES

- ❑ Substantial Completion approximately early/mid-August of 2025. Conversations regarding further acceleration ongoing between PFD and the general contractor.
- ❑ Demo of current swing space expected to start 1/21/25, following the relocation of students and staff.
- ❑ Punch List work expected to happen during off hours once staff and students occupy the building in September 2025



Washington Irving Construction Update 1/13/2025

January 2025

Increased workforce as well as releasing of swing space scope and remainder of building.

June-July 2025

AV/Tech along with FF&E delivery/ install

February 2025

FF&E / AV TECH bid package opening

August 2025

Substantial completion once Building/Life safety Sign off (BFD/ISD) Teachers Move in



Removal of existing windows and framework



New HVAC system installed on new roof.

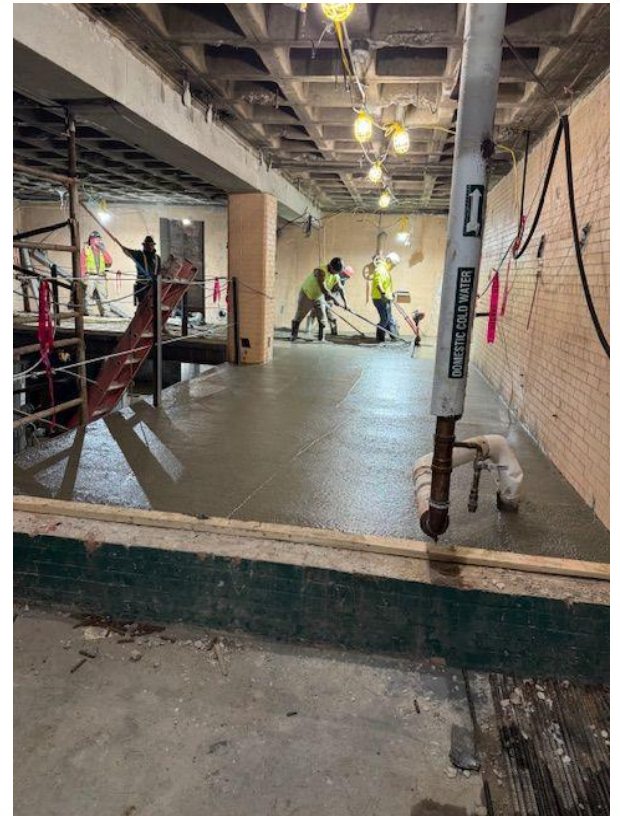




Gym ceiling removed
over holiday break



New concrete slab pour
tying in new addition
and ground floor



QUESTIONS AND FEEDBACK

Questions and feedback may be directed to

capitalplanning@bostonpublicschools.org

BPS Capital Planning

