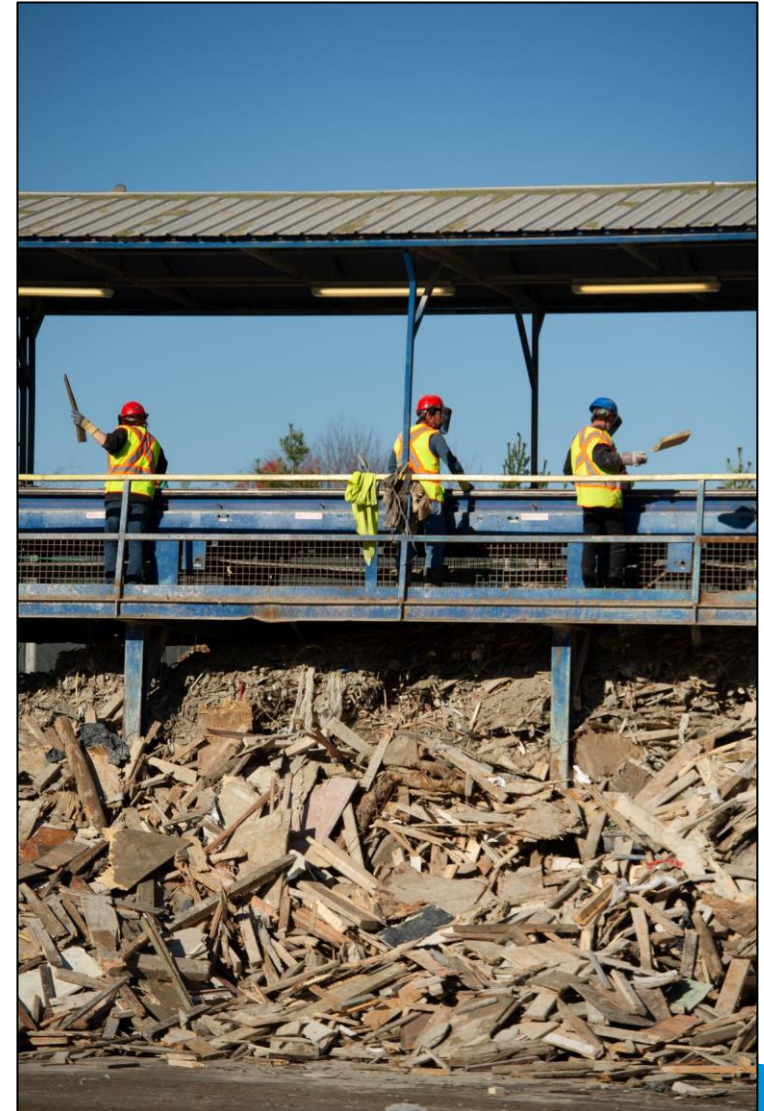




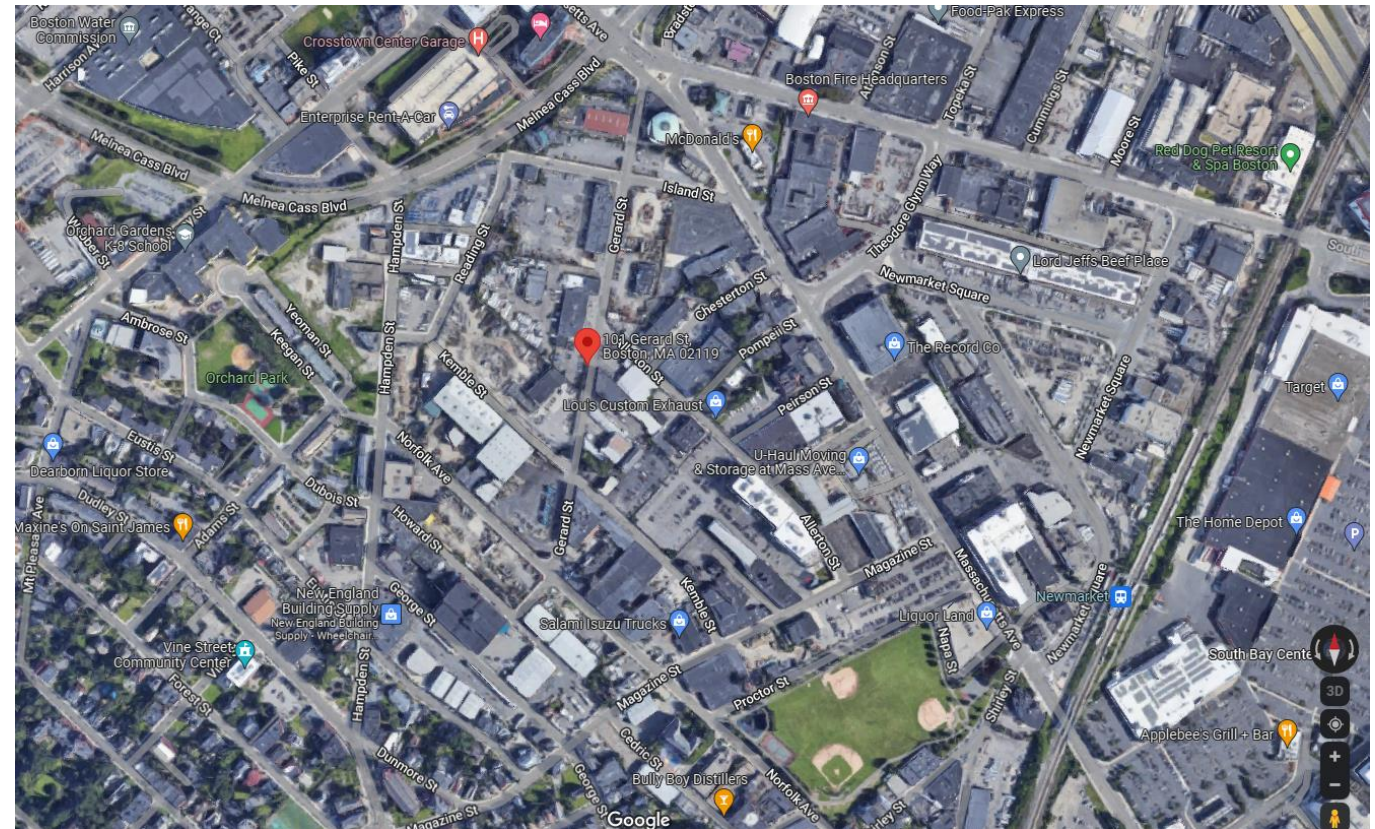
**Public Hearing Presentation
Boston Board of Health
January 10, 2024**

- New England's largest processor of construction and demolition (C&D) material
- An integrated network of five strategically located facilities in New England that process a wide variety of waste material and recover a high percentage of that material into high-quality end products for reuse
- Owned by GCM Grosvenor, a leading global alternative asset management solutions provider, in partnership with ReEnergy Holdings LLC.
- Known for commitment to safety and environmental compliance and for our innovative approach to material processing



101-111 Gerard Street, Roxbury

- This location received a site assignment from the Boston Department of Health and Hospitals in February 1978 for a transfer station for construction waste materials.
- ReSource acquired the facility in 2012.
- The facility is located 10 minutes from downtown Boston in the Newmarket business district of the Roxbury neighborhood, with quick and easy access to I-90.
- The facility accepts a wide variety of solid, non-hazardous construction and demolition (C&D) materials from waste handlers, contractors, roofers, landscapers, property managers, clean-out companies and homeowners. We recover components of value and transform waste into reusable commodities.



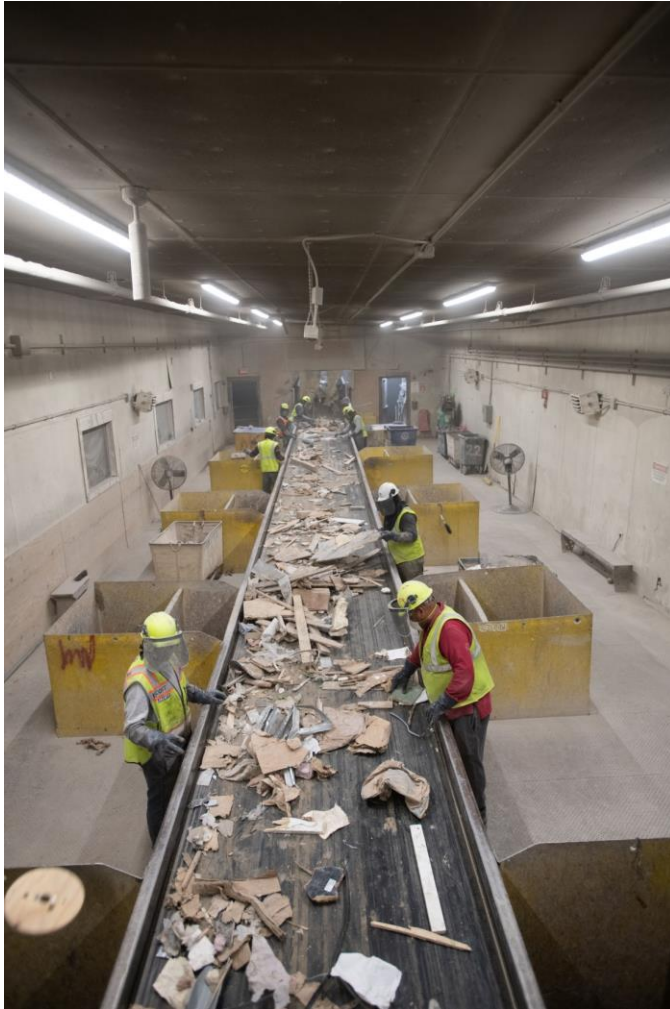


- We directly support about 50 community-based jobs and more than 100 additional indirect jobs and we spend \$1.8 million annually with local businesses.
- ReSource Roxbury is a valuable part of the community, providing eyes on the street and regular cleanup services in the neighborhood, and are proud to have hired workers through the Newmarket Boston Jobs Initiative and Pine Street Inn.
- ReSource Roxbury is active in the Newmarket Business Association and Mass Recycle, and supports many community projects and organizations, such as the Orchard Gardens and Mason schools, in-kind support for City public works projects, The Base, Hope House, and the Greater Boston Food Bank.

ReSource Waste Service recycles construction and demolition material in Boston and is the only RCI-certified facility of its kind in New England. If a contractor is working on a project that is seeking LEED green-building certification (Leadership in Energy and Environmental Design), the contractor will earn credit toward that certification by disposing project waste at a RCI-certified facility such as ReSource Roxbury.

- The key focus of ReSource's leadership team is on the health and safety of its employees and customers. The Roxbury facility recently celebrated one year without an OSHA-recordable injury.
- We continually innovate, improving processes and implementing new technologies.





- With manual sorting and state-of-the-art technology, the Roxbury facility is able to recover components of value and transform waste into reusable commodities, a critical part of the City's construction recycling infrastructure.
- In 2022, the facility processed 191,897 tons of C&D waste and 44% of that waste was recovered, used beneficially or transferred for additional processing.
- Our recovered materials are used as wood fuel for electricity generation; fiberboard manufacturing; new cardboard; drywall for land application; recycled plastic and metal products; asphalt paving; and miscellaneous construction materials and soil substitutes.

Authorized Waste

Mixed CDD:

- Treated & Untreated Wood
- Asphalt, Brick & Concrete
- Metal
- Insulation
- Wire
- Glass
- Drywall
- Cardboard
- Carpet
- Stumps

Prohibited Waste

- Hazardous Waste
- Asbestos
- Contaminated Soils
- Sewage
- Liquid Waste
- Medical Waste
- Gaseous Waste





- The Roxbury facility is currently authorized by MassDEP to accept 750 tons per day and 234,000 tons per year.
- We are requesting a minor modification to our site assignment to allow us to process up to 799 tons per day rather than 750 tons per day.
- No change is proposed to the annual metric of 234,000 tons per year.
- This will allow us to better serve companies supporting the construction industry in Boston.

- Facility is operated in accordance with an Operation and Maintenance Plan to address dust, noise, litter and odors.
- Processing of materials occurs within the processing building, minimizing any noise, air quality impacts, or litter.
- Site inspected daily for litter.
- C&D materials do not generate nuisance odor conditions.
- Modification is anticipated to increase truck traffic by approximately 2 trucks per hour, with most additional traffic occurring in non-peak hours.
- Facility contains ample space for staging vehicles on-site.

Project Enjoys Strong Support

Letters of support from each of the following individuals, groups or entities were included within the Application:



Boston City Council
TANIA FERNANDES ANDERSON
Councilor - District 7



FRANK BAKER
BOSTON CITY COUNCILOR
DISTRICT 3



FELDMAN



