

BOSTON BOARD OF HEALTH

January 10, 2024

AGENDA

1. Chairperson's Remarks
2. Executive Office Report
3. Acceptance and Approval of Minutes from the November 8th, 2023 Meeting
5. 2024-2027 Strategic Plan Update
6. FY2025 Budget Update
7. Public Hearing Regarding Solid Waste Facility Proposed Minor Modification
8. Adjourn

EXECUTIVE OFFICE REPORT

DR. BISOLA OJIKUTU
JANUARY 10TH, 2024



BUILDING A HEALTHY BOSTON

APPROVAL OF MINUTES

BY VOTE OF THE BOARD

BOSTON
PUBLIC
HEALTH
COMMISSION



BUILDING A HEALTHY BOSTON

BPHC 2024-2027 STRATEGIC PLAN

PJ MCCANN

DEPUTY COMMISSIONER FOR POLICY AND PLANNING

JANUARY 10, 2024

BOSTON
PUBLIC
HEALTH
COMMISSION



BUILDING A HEALTHY BOSTON

PLANNING PROCESS

- **March**
 - SLT planning discussion
 - Reviewed plans, conducted stakeholder interviews
- **May**
 - All-Staff Town Hall
 - All-Staff Survey
- **June**
 - SLT planning retreat
 - Board presentation
 - Priority area working sessions
- **July-December**
 - SLT updates and discussion
 - Ongoing working sessions, drafting, and review
 - Identification of lead offices, timeframes, and measures



2024-2027 BPHC STRATEGIC PRIORITIES



Workforce and Infrastructure



Equity and Anti-Racism



Data and Innovation



Community Engagement and Partnerships

1. WORKFORCE AND INFRASTRUCTURE



Objective 1.1: Develop employee skills and competencies

Objective 1.2: Enhance workforce and Human Resources infrastructure

Objective 1.3: Increase employee recruitment and retention

2. EQUITY AND ANTI-RACISM ↗

Objective 2.1: Fully implement, revise, and measure equity and accountability in all policies, planning, services, and communications

Objective 2.2: Improve equity in internal and external services we provide

Objective 2.3: Invest in communities of color by increasing diversity of contractors and contracted partner agencies

3. DATA AND INNOVATION



Objective 3.1: Improve data collection, integration, sharing, analysis, and collaboration

Objective 3.2: Enhance enterprise systems to improve BPHC work and programs

Objective 3.3: Foster innovation to address health equity and emerging public health challenges

4. COMMUNITY ENGAGEMENT AND PARTNERSHIPS

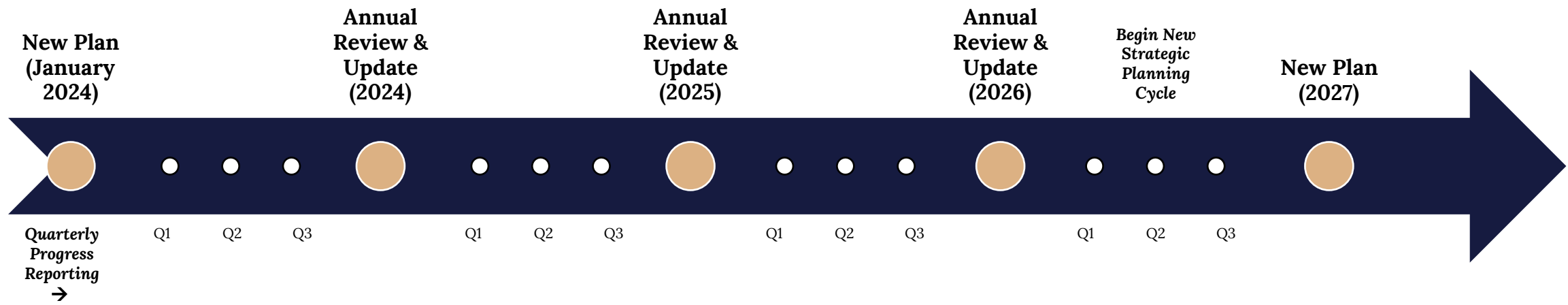


Objective 4.1: Create infrastructure and guidance to support, expand, and enhance community partnerships

Objective 4.2: Foster cross-sector partnerships and mobilize coordinated resources to improve health and health equity

Objective 4.3: Develop and implement new and innovative approaches to engage with the public and build trust

IMPLEMENTATION



BPHC FY2025 BUDGET UPDATE

TIM HARRINGTON
DIRECTOR OF ADMINISTRATION AND FINANCE
JANUARY 10TH, 2024

BOSTON
PUBLIC
HEALTH
COMMISSION



BUILDING A HEALTHY BOSTON

FY25 BUDGET TIMELINE

1/10/24	January Board Meeting with Budget Process Update
1/12/24	FY25 Draft maintenance budget submitted to the City, proposed new investments as well as any new capital requests
February 2024	FY25 external funds budget due to the City
January/February	Further meetings with OBM and Mayor's Office around potential new budget proposals and revisions to draft FY25 maintenance budget
3/13/2024	Board meeting to review and vote to submit FY25 maintenance budget to the Mayor for review and approval
May 2024	City Council hearings
6/12/2024	Final Board vote to approve FY25 budget

FY25 BUDGET

- Proposed FY25 total maintenance budget is \$139,602,455. This preliminary figure is a 7.5% increase over FY24's adopted budget amount of \$129,907,346.
- Significant increases are mainly due to the settling of multiple collective bargaining agreements across the Commission and EMS.
- The draft budget will be shared with the Board once complete and will be covered in more detail at the March Board meeting.

DRAFT FY25 NEW INVESTMENT PROPOSALS

- New investment requests have not been finalized, but they include:
 - Continued funding for a coordinated public health response around Mass and Cass including outreach and related recovery services
 - Administrative needs critical to strengthening the organization
 - New efforts to tackle health inequities in the City
- We will provide additional updates regarding our new investment requests at the next Board meeting

QUESTIONS?



RECYCLING FACILITY PUBLIC HEARING

PRESENTATION BY APPLICANT

BOSTON
PUBLIC
HEALTH
COMMISSION

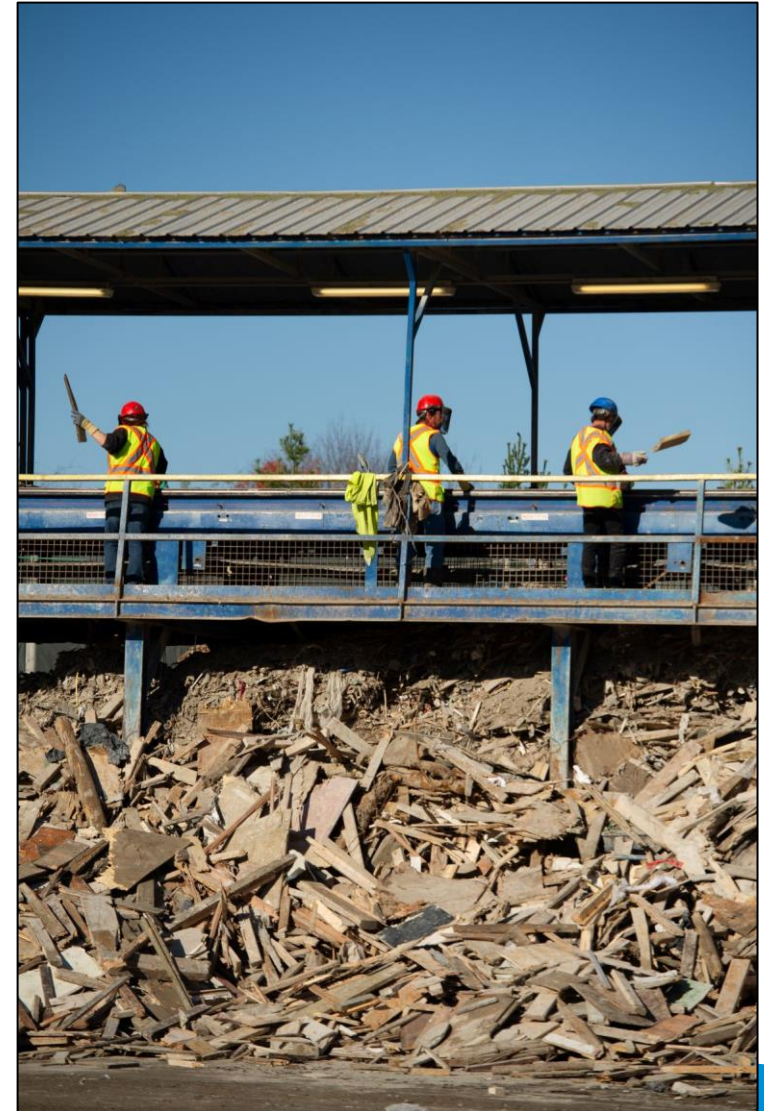


BUILDING A HEALTHY BOSTON



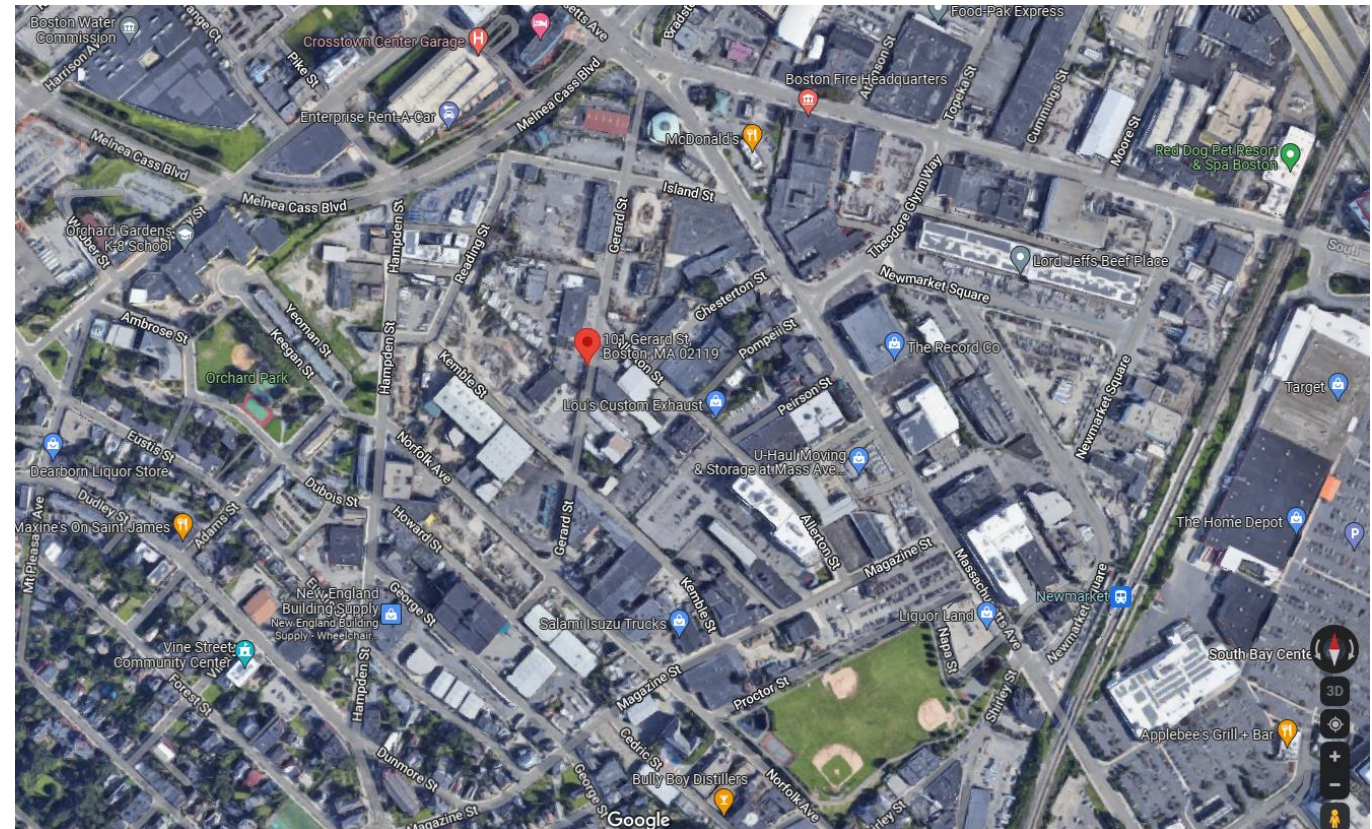
**Public Hearing Presentation
Boston Board of Health
January 10, 2024**

- New England's largest processor of construction and demolition (C&D) material
- An integrated network of five strategically located facilities in New England that process a wide variety of waste material and recover a high percentage of that material into high-quality end products for reuse
- Owned by GCM Grosvenor, a leading global alternative asset management solutions provider, in partnership with ReEnergy Holdings LLC.
- Known for commitment to safety and environmental compliance and for our innovative approach to material processing



101-111 Gerard Street, Roxbury

- This location received a site assignment from the Boston Department of Health and Hospitals in February 1978 for a transfer station for construction waste materials.
- ReSource acquired the facility in 2012.
- The facility is located 10 minutes from downtown Boston in the Newmarket business district of the Roxbury neighborhood, with quick and easy access to I-90.
- The facility accepts a wide variety of solid, non-hazardous construction and demolition (C&D) materials from waste handlers, contractors, roofers, landscapers, property managers, clean-out companies and homeowners. We recover components of value and transform waste into reusable commodities.



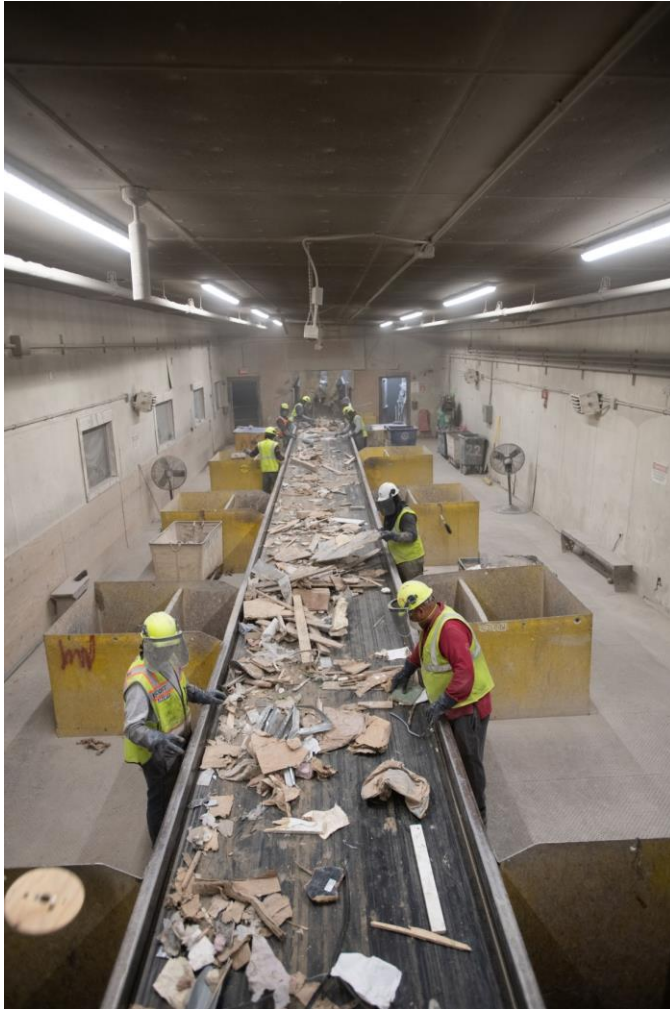


- We directly support about 50 community-based jobs and more than 100 additional indirect jobs and we spend \$1.8 million annually with local businesses.
- ReSource Roxbury is a valuable part of the community, providing eyes on the street and regular cleanup services in the neighborhood, and are proud to have hired workers through the Newmarket Boston Jobs Initiative and Pine Street Inn.
- ReSource Roxbury is active in the Newmarket Business Association and Mass Recycle, and supports many community projects and organizations, such as the Orchard Gardens and Mason schools, in-kind support for City public works projects, The Base, Hope House, and the Greater Boston Food Bank.

ReSource Waste Service recycles construction and demolition material in Boston and is the only RCI-certified facility of its kind in New England. If a contractor is working on a project that is seeking LEED green-building certification (Leadership in Energy and Environmental Design), the contractor will earn credit toward that certification by disposing project waste at a RCI-certified facility such as ReSource Roxbury.

- The key focus of ReSource's leadership team is on the health and safety of its employees and customers. The Roxbury facility recently celebrated one year without an OSHA-recordable injury.
- We continually innovate, improving processes and implementing new technologies.





- With manual sorting and state-of-the-art technology, the Roxbury facility is able to recover components of value and transform waste into reusable commodities, a critical part of the City's construction recycling infrastructure.
- In 2022, the facility processed 191,897 tons of C&D waste and 44% of that waste was recovered, used beneficially or transferred for additional processing.
- Our recovered materials are used as wood fuel for electricity generation; fiberboard manufacturing; new cardboard; drywall for land application; recycled plastic and metal products; asphalt paving; and miscellaneous construction materials and soil substitutes.

Authorized Waste

Mixed CDD:

- Treated & Untreated Wood
- Asphalt, Brick & Concrete
- Metal
- Insulation
- Wire
- Glass
- Drywall
- Cardboard
- Carpet
- Stumps

Prohibited Waste

- Hazardous Waste
- Asbestos
- Contaminated Soils
- Sewage
- Liquid Waste
- Medical Waste
- Gaseous Waste





- The Roxbury facility is currently authorized by MassDEP to accept 750 tons per day and 234,000 tons per year.
- We are requesting a minor modification to our site assignment to allow us to process up to 799 tons per day rather than 750 tons per day.
- No change is proposed to the annual metric of 234,000 tons per year.
- This will allow us to better serve companies supporting the construction industry in Boston.

- Facility is operated in accordance with an Operation and Maintenance Plan to address dust, noise, litter and odors.
- Processing of materials occurs within the processing building, minimizing any noise, air quality impacts, or litter.
- Site inspected daily for litter.
- C&D materials do not generate nuisance odor conditions.
- Modification is anticipated to increase truck traffic by approximately 1 truck per hour, with most additional traffic occurring in non-peak hours.
- Facility contains ample space for staging vehicles on-site.

Project Enjoys Strong Support

Letters of support from each of the following individuals, groups or entities were included within the Application:



Boston City Council

TANIA FERNANDES ANDERSON
Councilor - District 7



FRANK BAKER
BOSTON CITY COUNCILOR
DISTRICT 3



FELDMAN

Right. From the Ground Up



ORCHARD GARDENS
Residents Association
25 Ambrose Street Roxbury, MA 02119





BOSTON BOARD OF HEALTH

January 10, 2024

AGENDA

1. *Chairperson's Remarks*
2. *Executive Office Report*
3. *Acceptance and Approval of Minutes from the November 8th, 2023 Meeting*
5. *2024-2027 Strategic Plan Update*
6. *FY2025 Budget Update*
7. *Public Hearing Regarding Solid Waste Facility Proposed Minor Modification*
8. *Adjourn*