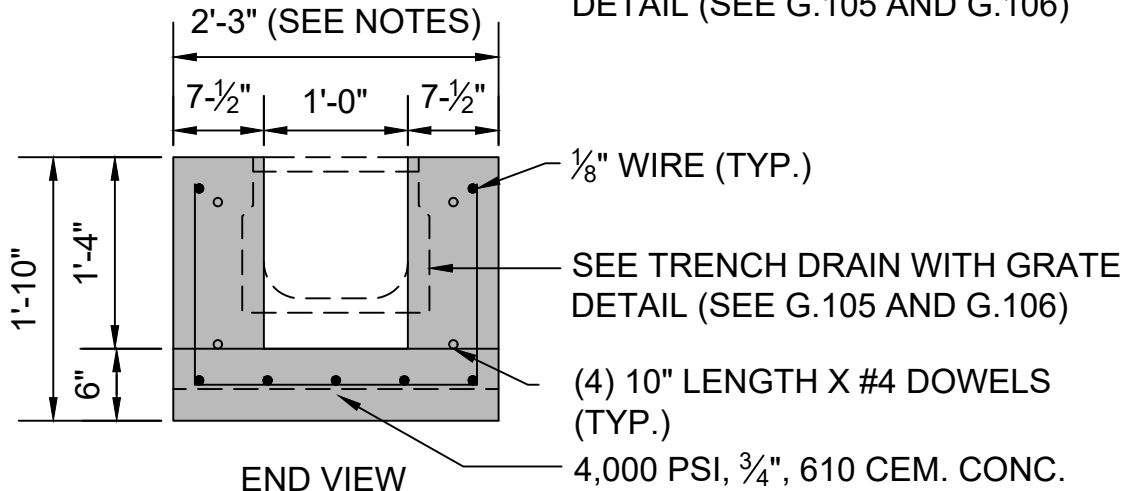


**NOTE:**

1. END SECTION SHALL BE SIZED TO MATCH THE WIDTH OF THE TRENCH DRAIN.

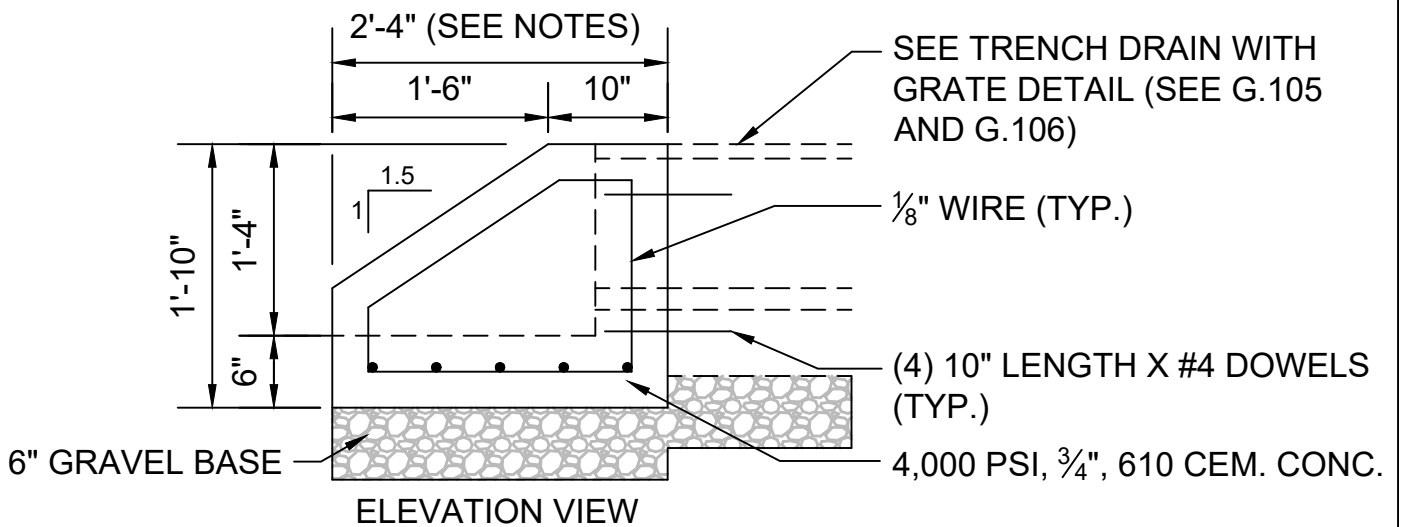
**PLAN VIEW**

- (4) 10" LENGTH X #4 DOWELS (TYP.)
- SEE TRENCH DRAIN WITH GRATE DETAIL (SEE G.105 AND G.106)



**END VIEW**

- (4) 10" LENGTH X #4 DOWELS (TYP.)
- 4,000 PSI, 3/4", 610 CEM. CONC.



**ELEVATION VIEW**

- SEE TRENCH DRAIN WITH GRATE DETAIL (SEE G.105 AND G.106)

- 1/8" WIRE (TYP.)

- (4) 10" LENGTH X #4 DOWELS (TYP.)

- 4,000 PSI, 3/4", 610 CEM. CONC.



**Public Works Department  
Engineering Division**

1 CITY HALL SQUARE, ROOM 710  
BOSTON, MA 02201  
(617) 635-4968

**PRECAST CONCRETE END  
SECTION FOR 12" TRENCH DRAIN**

**DATE OF ISSUE:  
DECEMBER 2024**

**SCALE: N.T.S.**

**DETAIL NO.**

**G.107**