



RETAIL/RESTAURANT
SPACE AVAILABLE

857.250.2981
THREASURES.COM

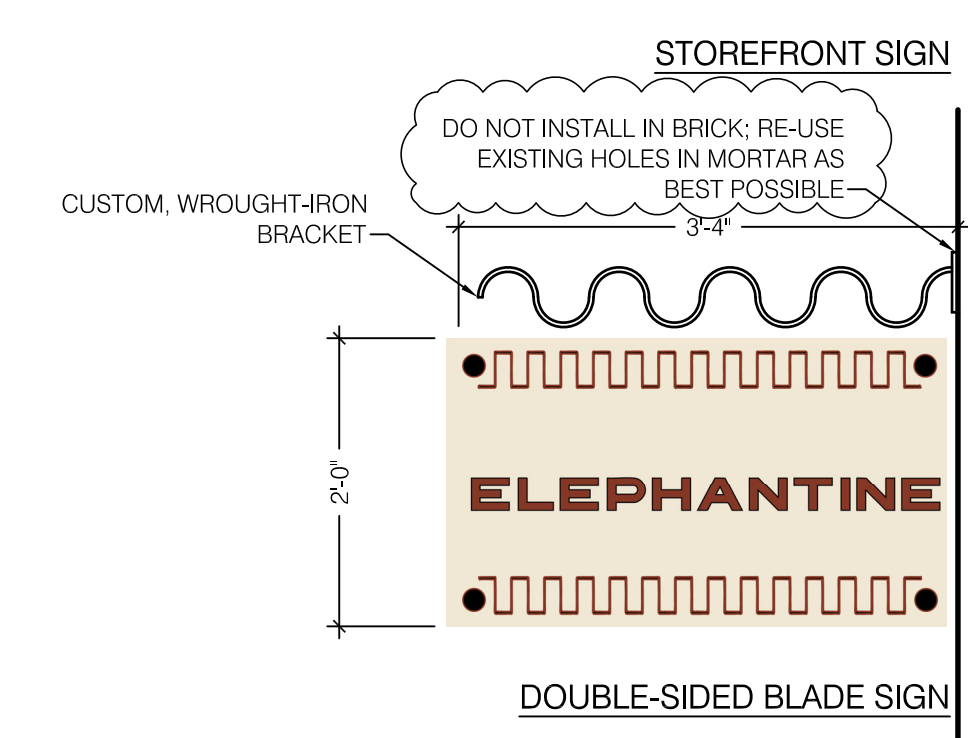
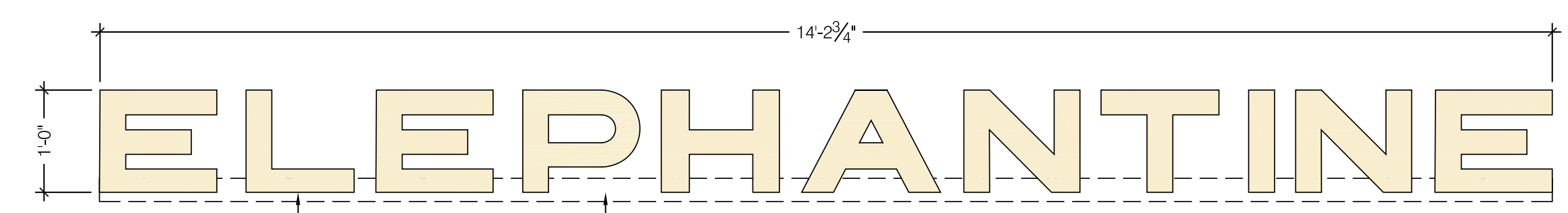


352

30



1 Existing Storefront Facade
1/4" = 1'-0"



3 Proposed Signage
3/4" = 1'-0"



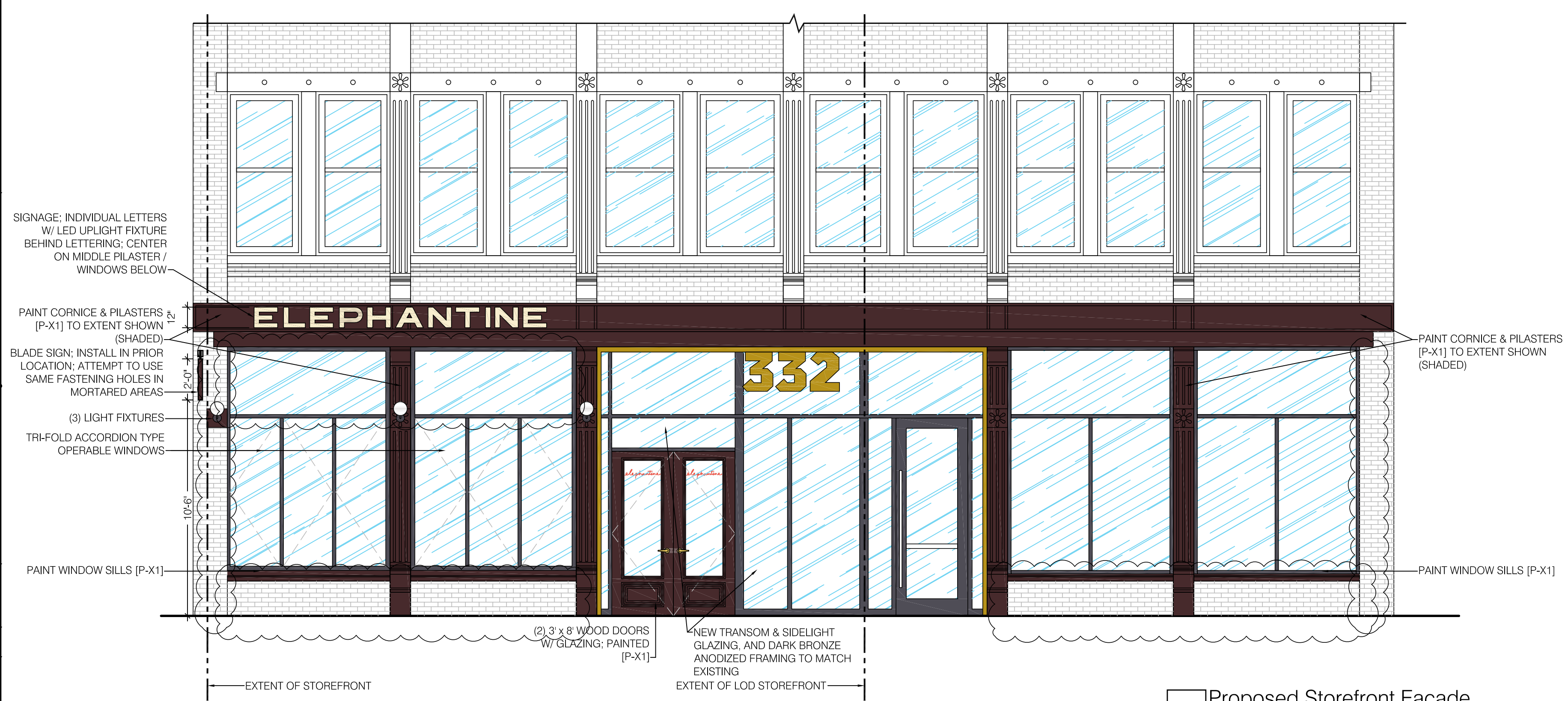
4 Proposed Exterior Light Fixture
3" = 1'-0"

FACADE PAINT COLOR [P-X1]:
HEX CODE: 482A2D
AKA: BROWN COFFEE

MANUFACTURER:
RUSTOLEUM ULTRA GLOSS
KONA BROWN



5 Proposed Exterior Paint Color [P-X1]
NTS



2 Proposed Storefront Facade
1/4" = 1'-0"

EXTERIOR GRADE WOOD DOORS W/ CLEAR, INSULATED GLAZING- MANUFACTURER: GLASSCRAFT MODEL: P-MAH PORTOBELLO 3/4 LIGHT 80-2; DOORS TO BE PAINTED [P-X1] TO MATCH FACADE



6 Proposed Dble Entry Wood Doors
3/4" = 1'-0"

NOTES

PROJECT

elephantine

Elephantine Bakery
332 Congress Street
Boston MA 02210

CLIENT

Elephantine Bakery
Farag Bread's LLC
10 Commercial Alley
Suite 2
Portsmouth NH 03801-8804
Contact: Sherif Farag
Tel: 603 767.2428
E: sfarag@gmail.com

MEP ENGINEER

Building Engineering Resources, Inc.
66 Main Street
N. Easton MA 02556
T 508 230.0260
Fax: 508 230.0265
E: her@ber-engineering.com

STRUCTURAL

CONSULTANT

SEAL

NO.	DATE	REVISION
1	12/09/24	FPCLD REVISED
	11/18/24	FPCLD SUBMISSION
	11/08/24	PERMIT
	8/7/24	LANDLORD REVIEW

R2 ARCHITECTS Inc.
508.744.4646
r2arch.com
91 Somerset Street
Plymouth, MA 02260

PROJECT MGR: JW
CHECKED BY: JW/RR
JOB NO: 23507
DRAWN BY: RR
SCALE: As Noted
DATE: 10.31.2024
DWG TITLE: FORT POINT LANDMARK DISTRICT SUBMISSION STOREFRONT FACADE
SHEET NO: LM-1.0

Acadbro\A23507_Elephantine.Landmark_Comm.dwg Dec 09 2024 12:08 pm RREIFFS



ELEPHANTINE

ELEPHANTINE

332



ELEPHANTINE

ELEPHANTINE

332

Elephantine

Elephantine



ELEPHANTINE

ELEPHANTINE

332

Elephantine

Elephantine

