

# *Sally's* A P I Z Z A

EXTERIOR SIGNAGE SUBMISSION  
30 THOMSON PLACE



## DESIGN REVIEW TOPICS

LOCATION OF BUILDING WITHIN DISTRICT

EXISTING PHOTOS

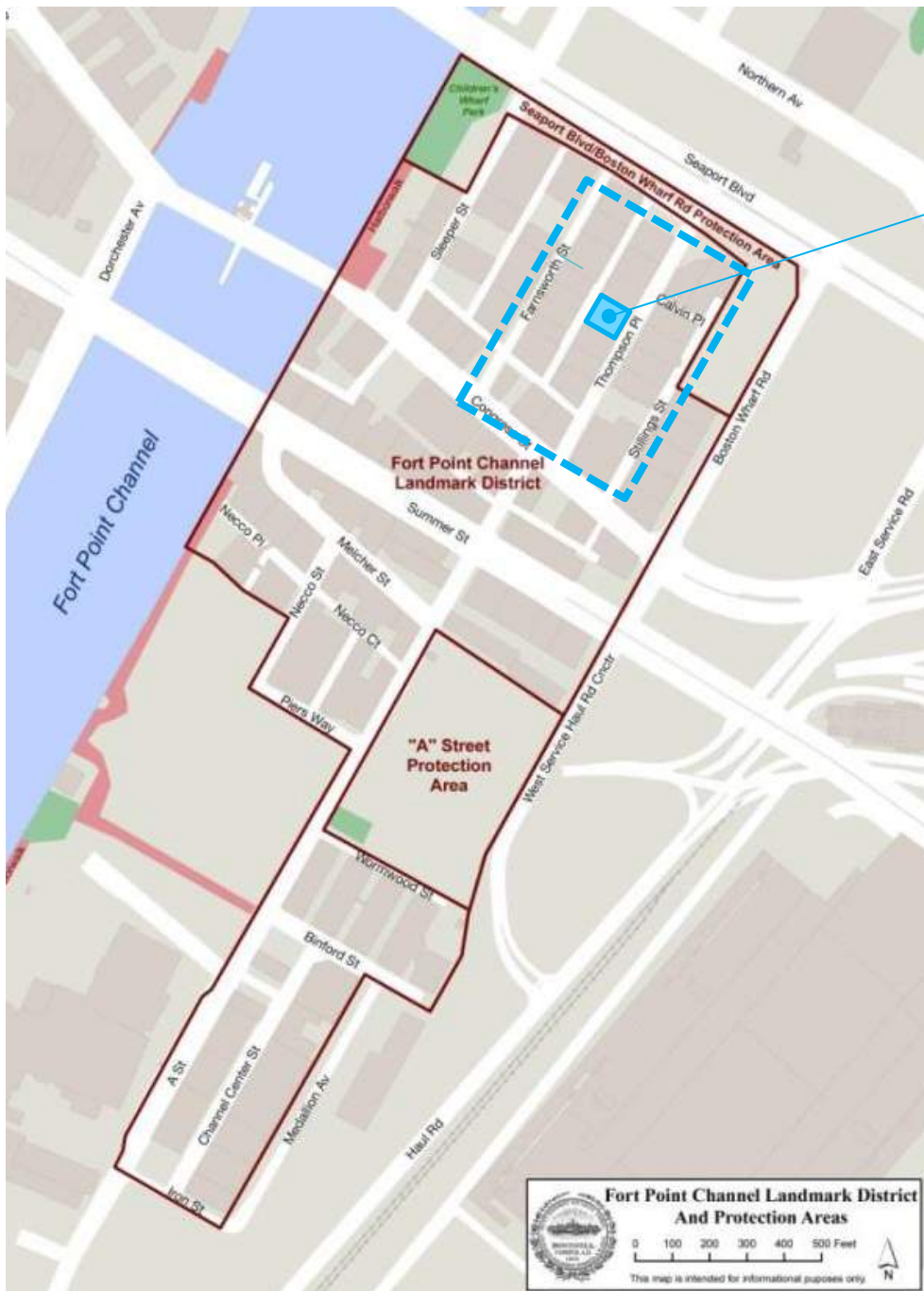
PROPOSED DESIGN

- DAY TIME VIEW
- NIGHT TIME VIEW

SIGNAGE DETAILS

NEIGHBORHOOD PHOTOS

HISTORIC PHOTO AS REFERENCE



30 THOMSON PLACE



PROJECT LOCATION MAP

FORT POINT CHANNEL LANDMARK DISTRICT

12.12.2024



EXISTING CONDITION PHOTOS

12.12.2024



EXISTING CONDITION PHOTOS

12.12.2024

artfx

Sally's  
PIZZA



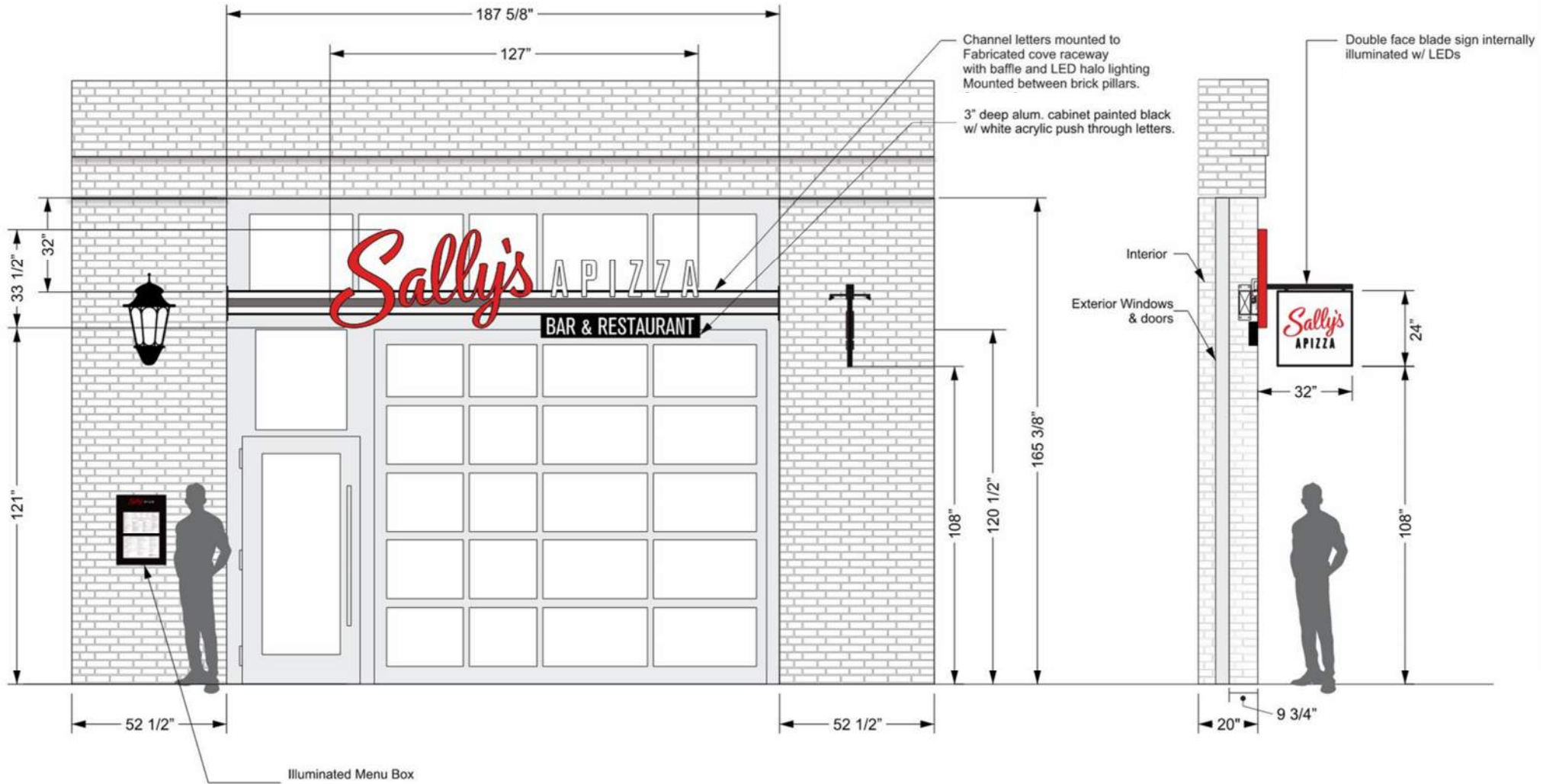
Proposed Storefront  
Day



Proposed Storefront  
Night

DAY TIME VIEW OF PROPOSED CHANGES

12.12.2024



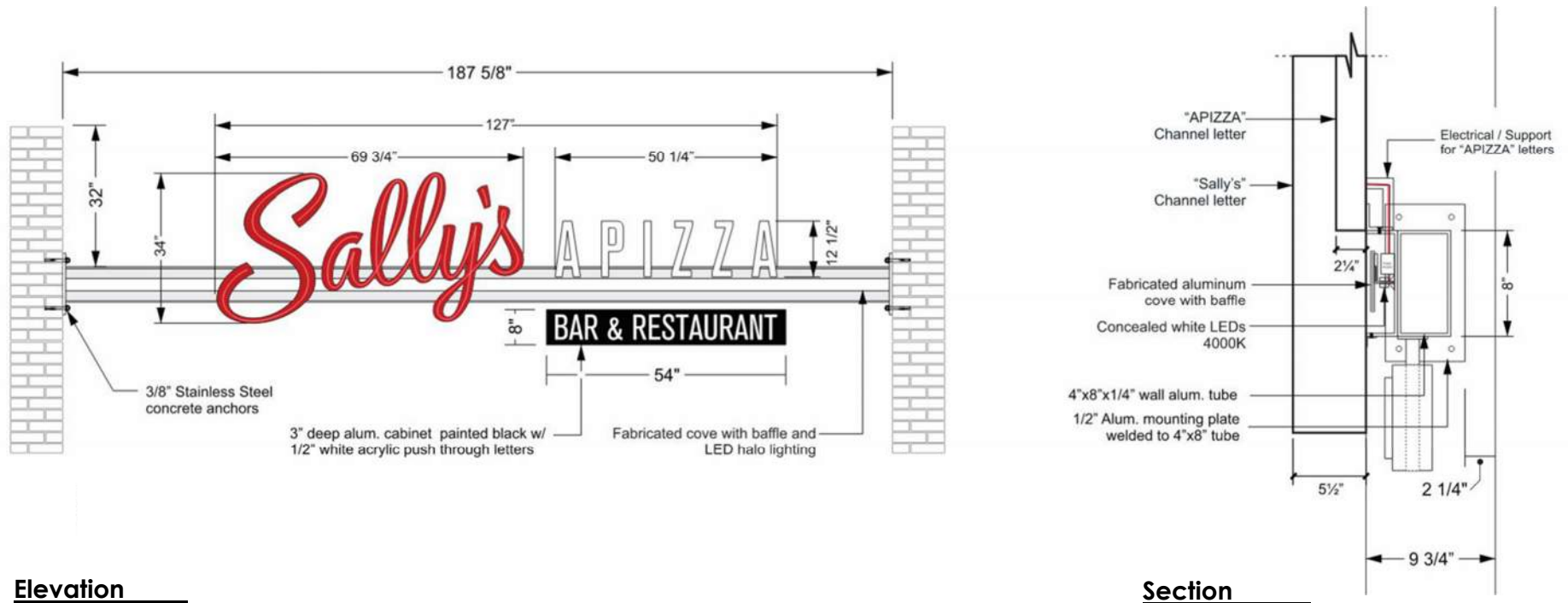
**Elevation**

**Section**

SIGNAGE INSTALLATION LOCATIONS

12.12.2024

# Item 1: Raceway Mounted Channel Letters



**Elevation**

**Section**

► **34" tall x 5 1/2" deep – neon channel letter set.**

Channel letters fabricated with aluminum plate backers and aluminum sheet returns. Letter set to be sprayed in "Sally's Red" low luster epoxy. Hand bent single stroke red neon tubing inset inside of channels to create internal illumination. Letter set to be mounted to custom raceway with mechanical fasteners and mounting plates.

► **12 1/2" tall x 2 1/4" deep – friction fit channel letter set.**

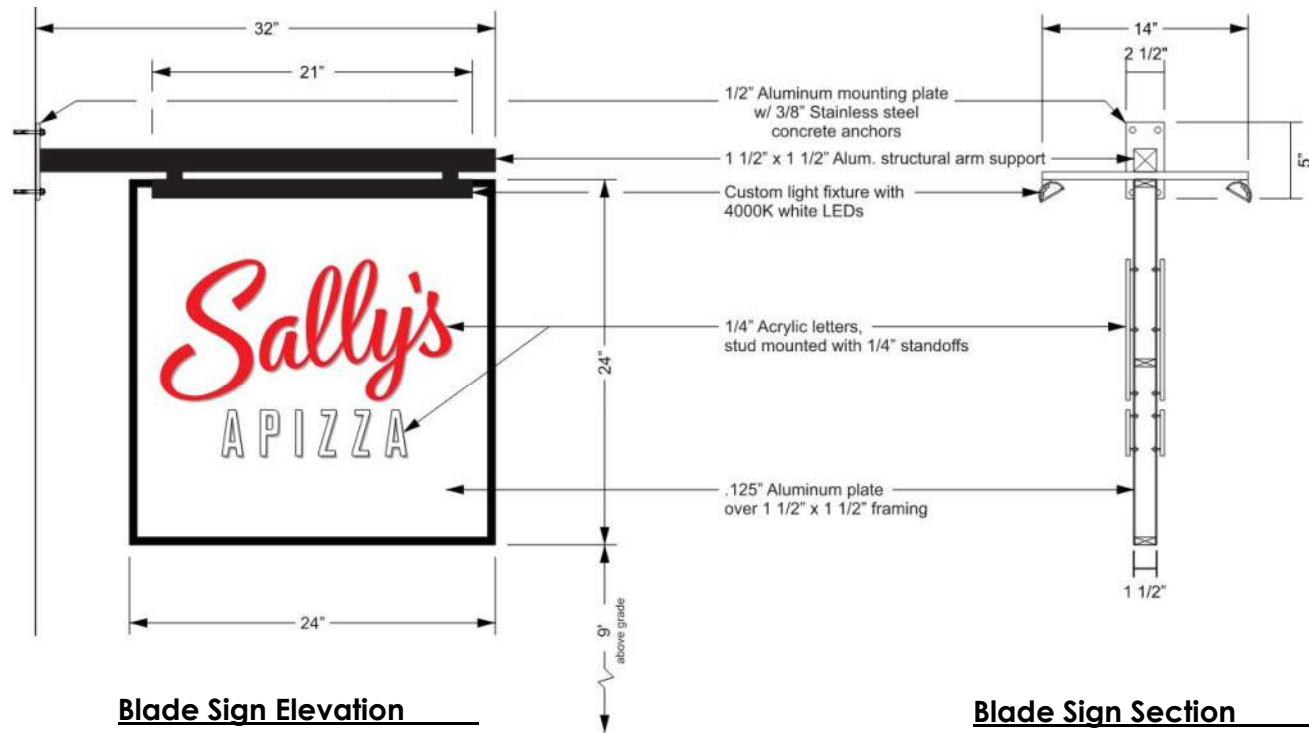
Letter set fabricated with aluminum plate backers, aluminum sheet returns, and friction fit white acrylic faces. Letters to be sprayed in black low luster epoxy. 4000K LEDs will be affixed inside of the letter cans to internally illuminate the acrylic front faces. Letter set will be mounted to custom raceway with mechanical fasteners and mounting plates.

► **15'-7 5/8" long x 8" tall x 4" deep – custom illuminated raceway.**

Raceway fabricated with .250" thick aluminum support tube and .500" thick mounting plates. Aluminum fabricated baffle on front face, with recesses for 4000K LED lighting. All components finished in black low luster epoxy and anchored to existing brick façade with masonry wedge anchors.

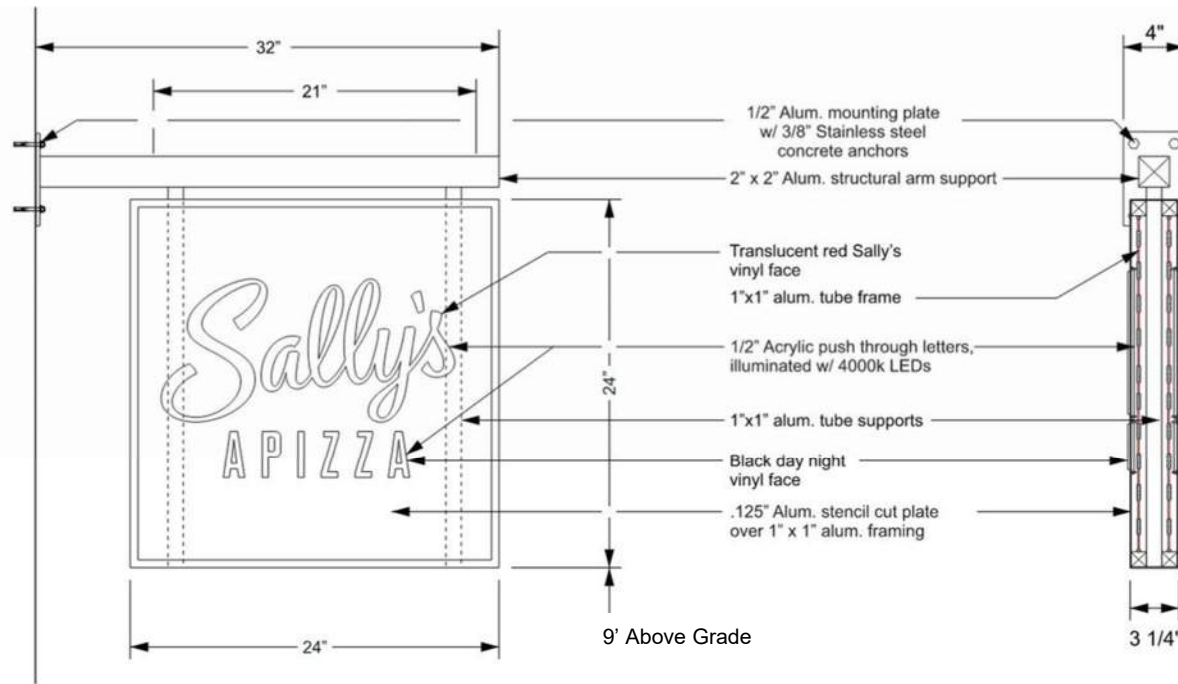


## Item 2: Blade Sign



- ▶ **24" tall x 24" wide x 1 1/2" deep – wall mounted blade sign.**  
Blade sign fabricated with aluminum tube framing, aluminum plate faces, and .500" thick aluminum mounting plate.
- ▶ **Custom light fixture fabricated with aluminum tube body and support arms, with frosted clear acrylic lens.**  
4000K LEDs mounted internally to create downlighting with wash effect.
- ▶ **Mounting plate, support arm, lighting fixture, and blade sign**  
body finished in black low luster epoxy, with the cabinet being masked and sprayed white on both faces.
- ▶ **.250" thick acrylic letter sets mounted to both faces**  
"SALLY'S" copy sprayed in red, and the "APIZZA" copy finished in white luster epoxy.
- ▶ **Blade sign to be mechanically fastened to existing brick façade with masonry wedge anchors.**

## Item 2: Blade Sign

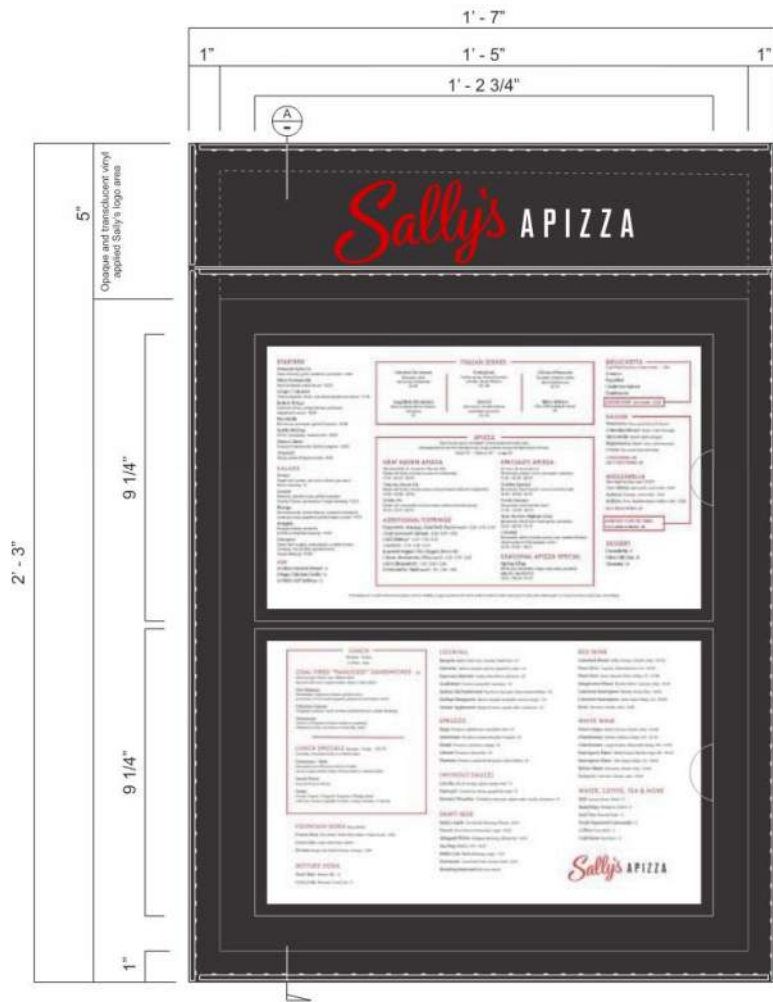


**Blade Sign Elevation**

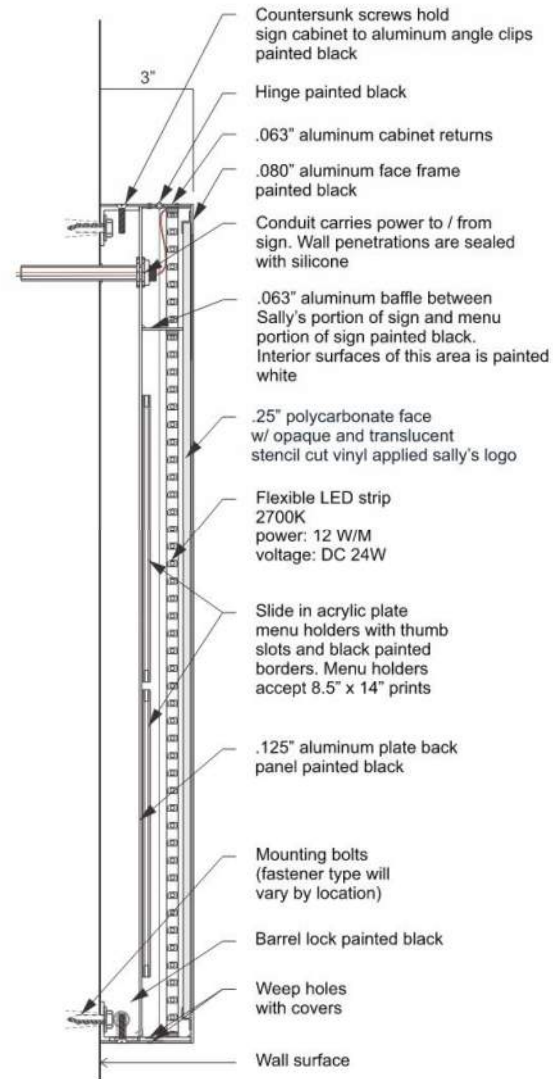
**Blade Sign Section**

- ▶ **24" tall x 24" wide x 1 1/2" deep – wall mounted blade sign.**  
Blade sign fabricated with aluminum tube framing, aluminum plate faces, and .500" thick aluminum mounting plate.
- ▶ **Custom light fixture fabricated with aluminum tube body and support arms, with frosted clear acrylic lens.**  
4000K LEDs mounted internally to create downlighting with wash effect.
- ▶ **Mounting plate, support arm, lighting fixture, and blade sign**  
body finished in black low luster epoxy, with the cabinet being masked and sprayed white on both faces.
- ▶ **.250" thick acrylic letter sets mounted to both faces**  
"SALLY'S" copy sprayed in red, and the "APIZZA" copy finished in white luster epoxy.
- ▶ **Blade sign to be mechanically fastened to existing brick façade with masonry wedge anchors.**

# Item 3: Illuminated Menu Cabinet



**Cabinet Elevation**



**Cabinet Section Detail**

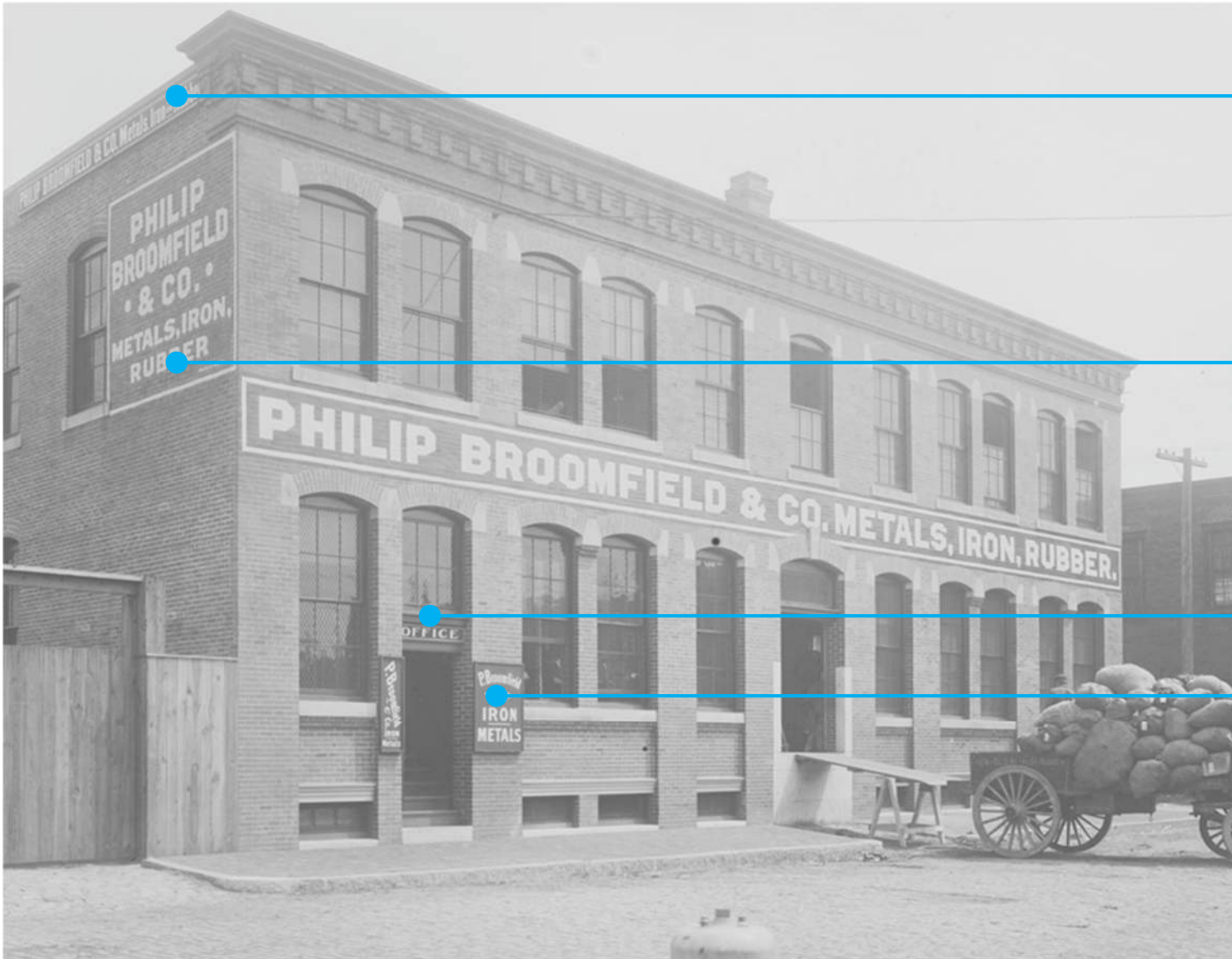


**Cabinet Perspective**



NEIGHBORHOOD REFERENCE PHOTOS

ILLUMINATED SIGNAGE



## SIGNAGE TYPES

COMPANY NAME (& OFFERINGS)  
PAINTED ON WOOD SIGN

COMPANY NAME (& OFFERINGS)  
PAINTED ON BRICK FACADE

COMPANY NAME (& OFFERINGS)  
PAINTED ON BRICK FACADE

COMPANY FUNCTION  
PAINTED ON WOOD FACADE

COMPANY NAME AND/OR  
OFFERINGS PAINTED ON BRICK

TYPICAL STOREFRONT LOCATIONS WITH PAINTED BRICK & PAINTED WOOD

HISTORIC SIGNAGE FOR REFERENCE

12.12.2024

*Sally's* **PIZZA**

**THANK YOU**