



COPLEY SQUARE PARK CONSTRUCTION UPDATE OCTOBER, 2024

Thank you for your patience and continued interest in this project.

Copley Square Park is an important cultural center of our city, and we understand that having the entire park closed for the duration of construction is difficult for many. We appreciate your patience during our renovation, and look forward to reopening in 2024. **At this point, we will have an area open for First Night, but we will not have the entire park completed by the end of this year. We are working on establishing a final park completion date!**

CONSTRUCTION SINCE SEPTEMBER:

- The fountain: work progresses inside the vault. On the exterior, cleaning of existing stone, and forming the edges of the large lower pool continues. Re-jointing is a multi-week effort, and new lights have been installed.
- Along the Boylston sidewalk, pervious pavers are moving along, as we pave from west (Clarendon) to east (Dartmouth). Due to the MBTA Orange Line work and associated bus transit, we haven't been able to work on the curbs or adjacent concrete pavement, but we've progressed just inside the site fence. October 21st is the new date for working on the curbs.
- The resin-bound porous gravel pavement has been installed!! It looks beautiful. (Photos below)
- The base layer for the pavers on the Raised Grove is in place, and we're assessing how much space the existing trees need. Pavers are next! We've approved the wood bench mockup, and these are now in full production mode, for delivery in late November/early December.
- Installation of pathway pavers has been paused as we wait for the new order to arrive, in early November. We've been working with the manufacturer and we now have a color that goes well with the concrete pavement, with the other pavers, and with the surroundings!

Work to anticipate in the coming weeks:

- As of 10/21, pedestrians along Boylston Street *should* be walking within the park limits, so the contractor can replace concrete pavement and curbs adjacent to the street.
- Pavers on the Raised Grove will begin to be installed (jumped the gun saying this last month!)
- Because pavers are paused until new ones arrive, the contractor will focus on finishing concrete work along the pathways. Once pavers arrive, they will focus on that, but more on that in our November update.
- Interior and exterior of the fountain will continue to receive attention.

SITE PHOTO, 10/17/2024



Concrete has been poured at the base of the lower pool to level it out. Next comes waterproofing, then granite pavers. (You can also see new nozzles below the spillways.)

SITE PHOTO, 10/17/2024



Look at this resin-bound aggregate pavement!! It's smooth, flat, and highly porous so rainwater flows right through it, into the soil below. (All we need is benches - getting there...)

SITE PHOTO, 10/03/2024



Here is a close-up of the resin-bound aggregate next to the colored concrete. Nice, right?

SITE PHOTO, 10/03/2024



One of the paver colors we received was WAY too yellow when it arrived, so we needed to pick a new color. The manufacturer produced a few more samples, and we chose the color on the left - shown in the first 4 pavers. They are in production now.

SITE PHOTO, 10/17/2024



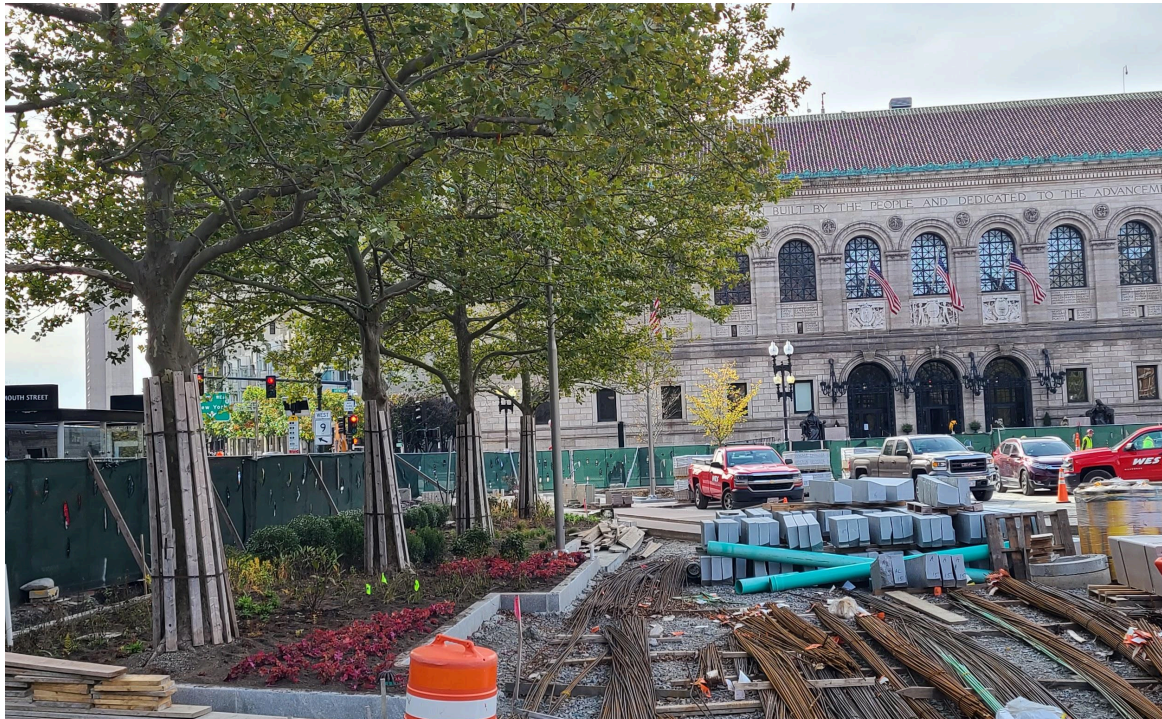
Pervious brick pavers being installed adjacent to the Boylston Street sidewalk area - we've now progressed this paving west of the fountain.

SITE PHOTO, 9/18/2024



The Raised Grove is intended to protect existing London Plane trees, so we need to build the deck in a way that allows for continued growth. Photo on the left is the structure below our pavers, and the photo on the right shows the grating system to distribute the weight evenly along the concrete beams. We will be increasing the opening in the grating system at the trees - this attempt was too small. Trees need room to breathe and grow.

SITE PHOTO, 10/17/2024



Plants are installed and growing in the large planter along the St. James edge of the site. Nearby, granite curbs and rebar, waiting to be installed.

TRINITY:

Trinity Church is a helpful neighbor during this challenging project, and they are attending our weekly site meetings, for the most up-to-date information regarding construction and schedules. The church is “open for business” during this project.

THIS IS A BOSTON RESIDENTS JOBS POLICY PROJECT:

For employment opportunities, call WES Construction Corp. at (781) 294-1080

OTHER ITEMS:

Please use 311 to document non-emergency issues relating to park use, and 911 for emergency situations relating to public safety.

Construction questions and concerns can be directed to B Chatfield, Project Manager (abigail.chatfield@boston.gov)

Project Website: boston.gov/copley-improvements