



RINGER PARK

Phase 1 Improvements

Community Meeting #3



September 26, 2024
Boston Parks and Recreation



AGENDA

1

INTRO (PROJECT TEAM, TIMELINE, GOALS)

2

PROJECT STATUS/RECAP

3

REVIEW OF REVISED PROJECT SCOPE

4

REVIEW OF SITE PLAN OPTIONS

5

DISCUSSION

6

NEXT STEPS

PROJECT TEAM

B Chatfield

Project Manager

abigail.chatfield@boston.gov or 617-504-7709

Kyle Zick

Principal, Kyle Zick Landscape Architecture, Inc.

Rob Barella

Associate, Kyle Zick Landscape Architecture, Inc.

Kevin L'herrou

Office of Neighborhood Services

kevin.lherrou@boston.gov or 617-256-4437





City of Boston
Priorities

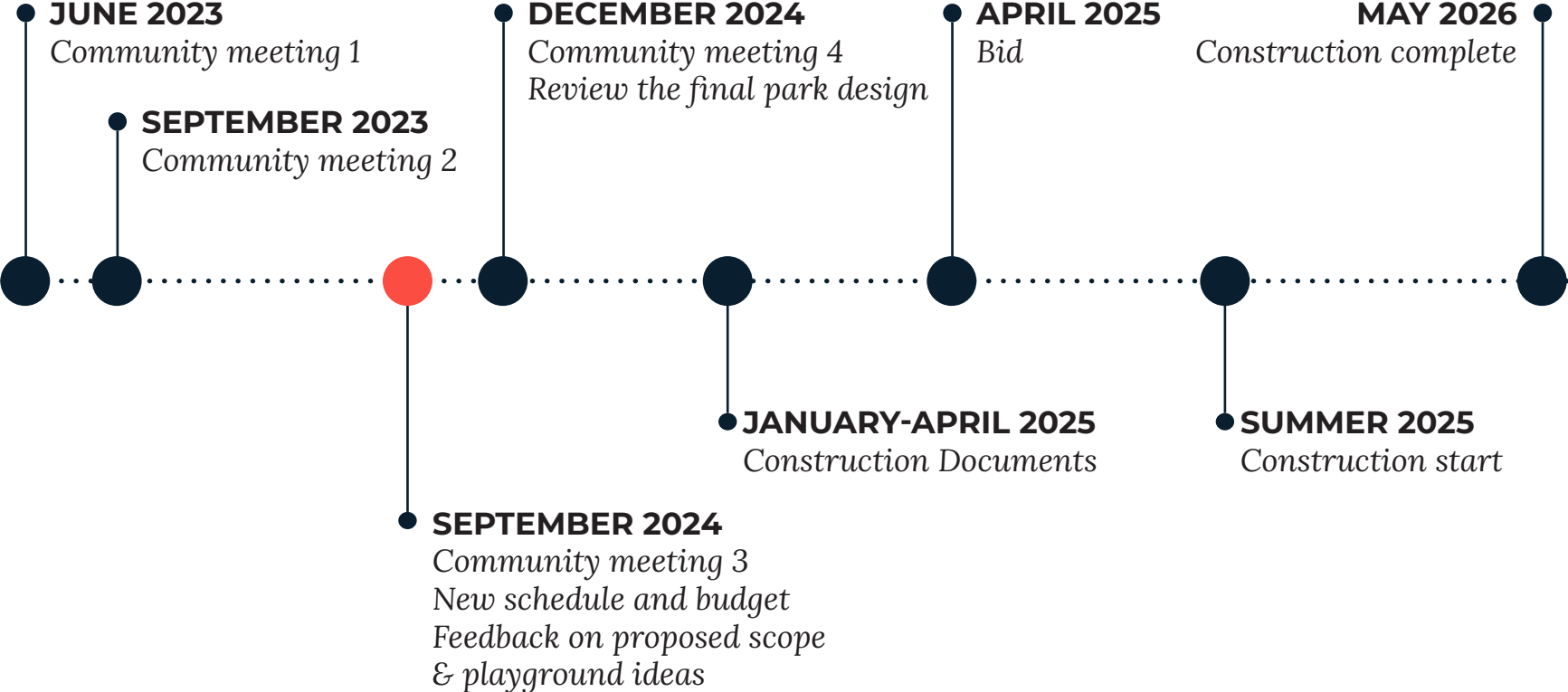
Safety Guidelines+
Regulatory
Guidelines

**PARK
DESIGN**

Parks + Recreation
Goals

Community
Input

PROJECT TIMELINE



Comprehensive Plan: 2020-2021

Community meetings:

- October 2020
- January 2021
- March 2021

A: little league baseball

B: dog park

C: play area

D: gathering space

E: basketball

F: tennis

G: woodland



Phase 1 Improvements: 2023

Phase 1 Funded for 2023-2024

\$1,250,000

- Scope includes accessibility improvements, pathways, entrances, tree work, dog park

- 1:** Entrances
- 2:** Pathways
- 3:** Dog park
- 4:** Pathway lighting
- 5:** Erosion mitigation



Amended Phase 1 Improvements: 2024-2025

Phase 1 Funded for 2024-2025

\$2,200,000

- Scope includes accessibility improvements, pathways, entrances, tree work, dog park, sports field, and playground

- 1:** Entrances
- 2:** Pathways
- 3:** Dog park
- 4:** Pathway lighting
- 5:** Erosion mitigation
- 6:** Playground
- 7:** Sports field



Entrances



Entrances



LIGHTING



Pathways

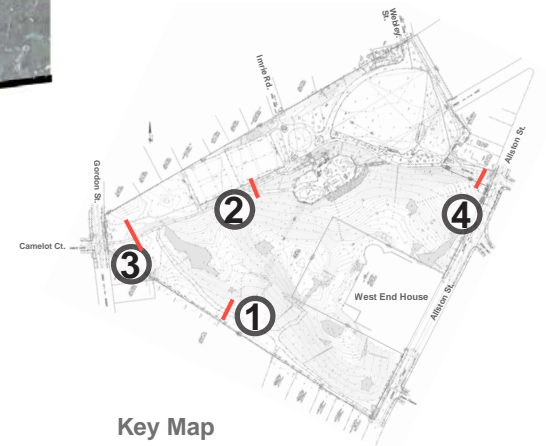


Property line

Existing retaining wall

9'

Paved Trail
Mixed-Use Walkway



Key Map

Pathways



Existing retaining wall



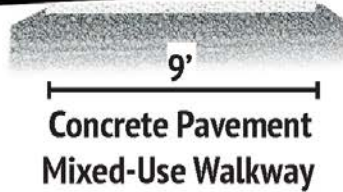
Light fixture



Key Map

Pathways

3



Light fixture

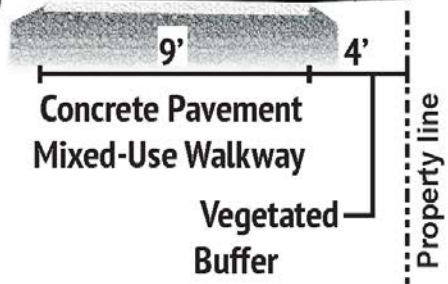


Pathways

4



Reset entrance sign



9'
Concrete Pavement
Mixed-Use Walkway

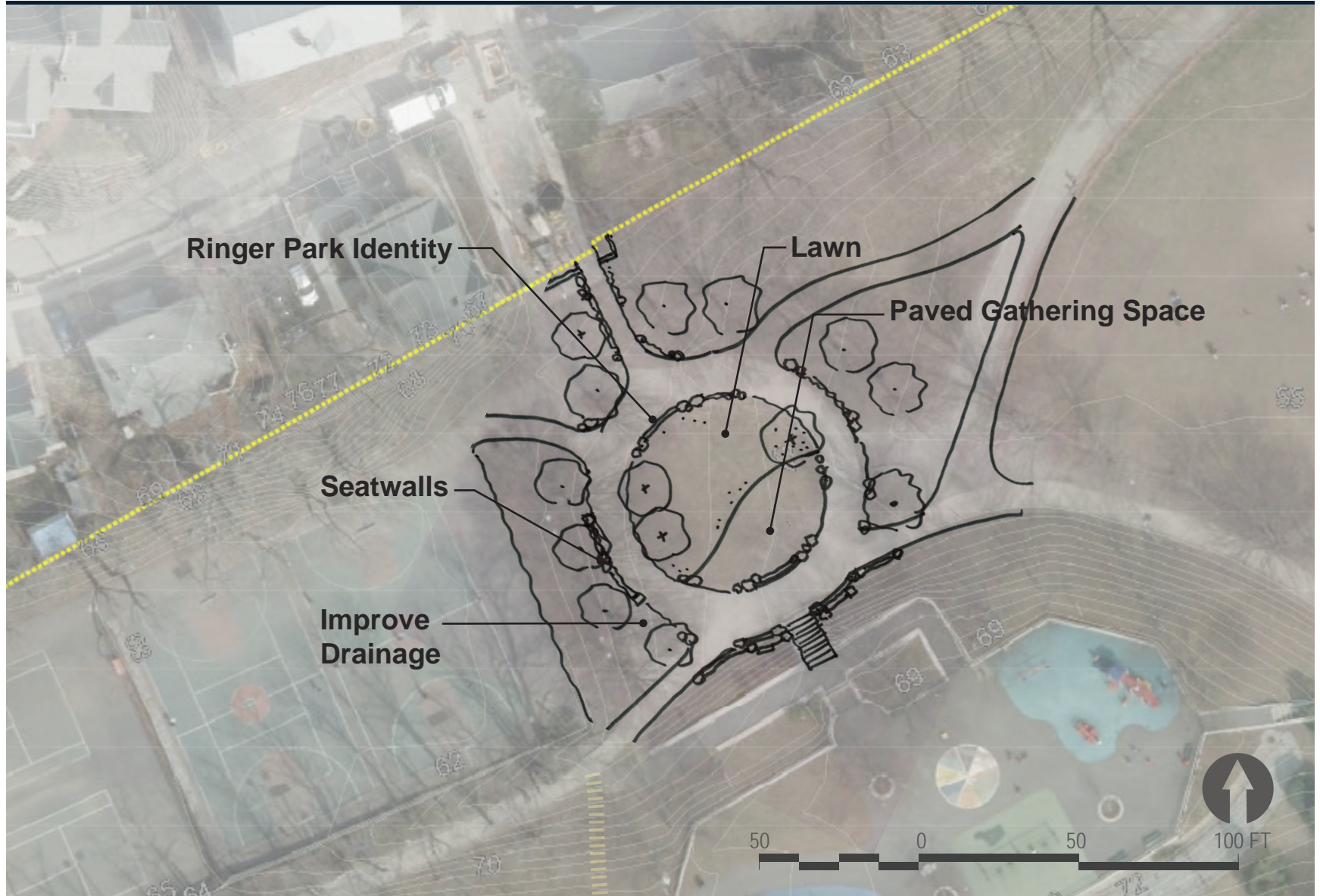
4'
Vegetated
Buffer

Property line



Key Map

IMPROVE GATHERING SPACE



Site Plan Alternative #1



OPTION 1

PROS:

- Lower construction costs if same playground location
- Dog park size sufficient for small/large areas

CONS:

- Playground is isolated from courts and field
- Playground isn't visible from the rest of the park

Existing pathway to be realigned

Proposed re-alignment

Site Plan Alternative #2



Site Plan Alternative #3

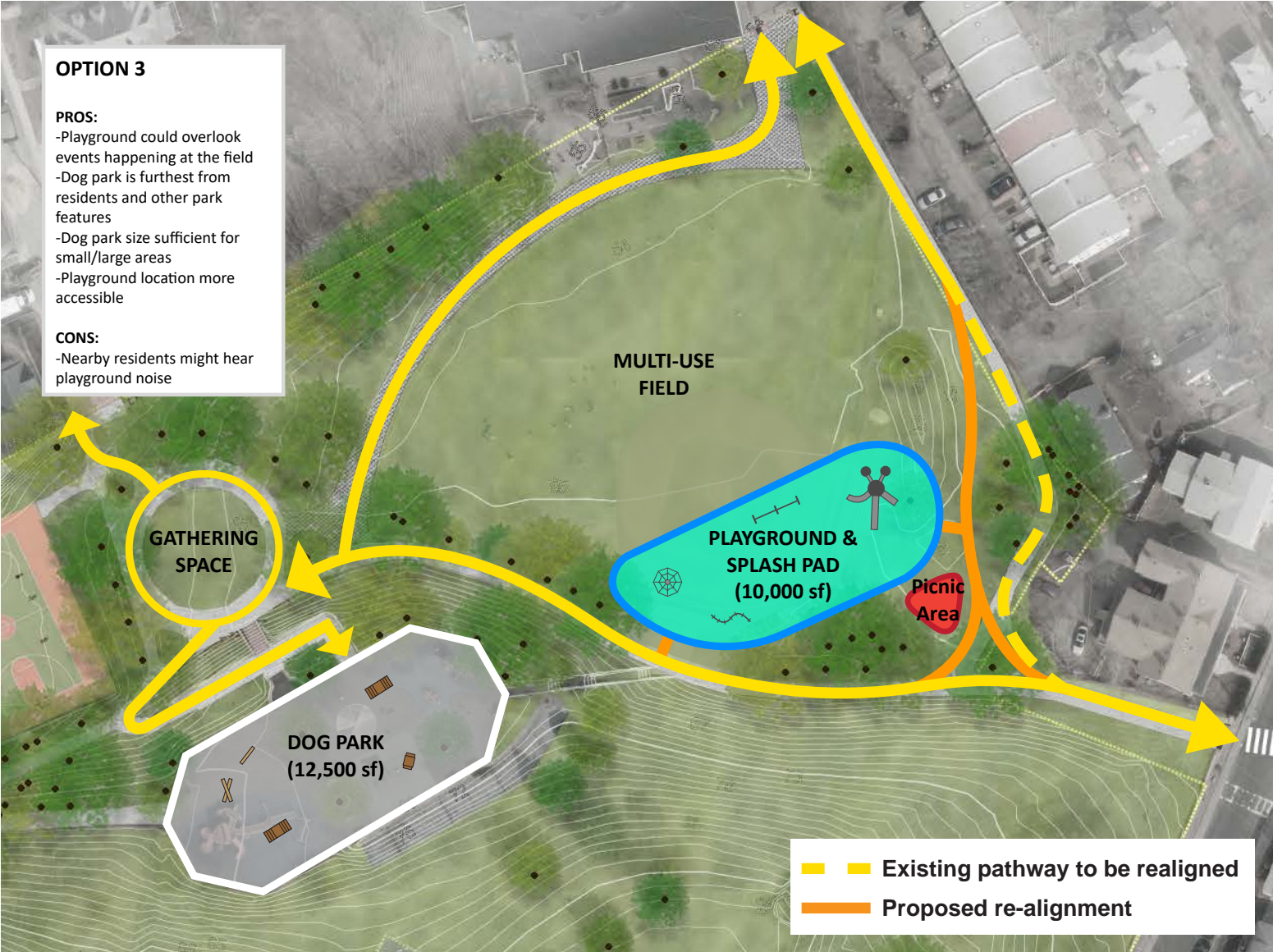
OPTION 3

PROS:

- Playground could overlook events happening at the field
- Dog park is furthest from residents and other park features
- Dog park size sufficient for small/large areas
- Playground location more accessible

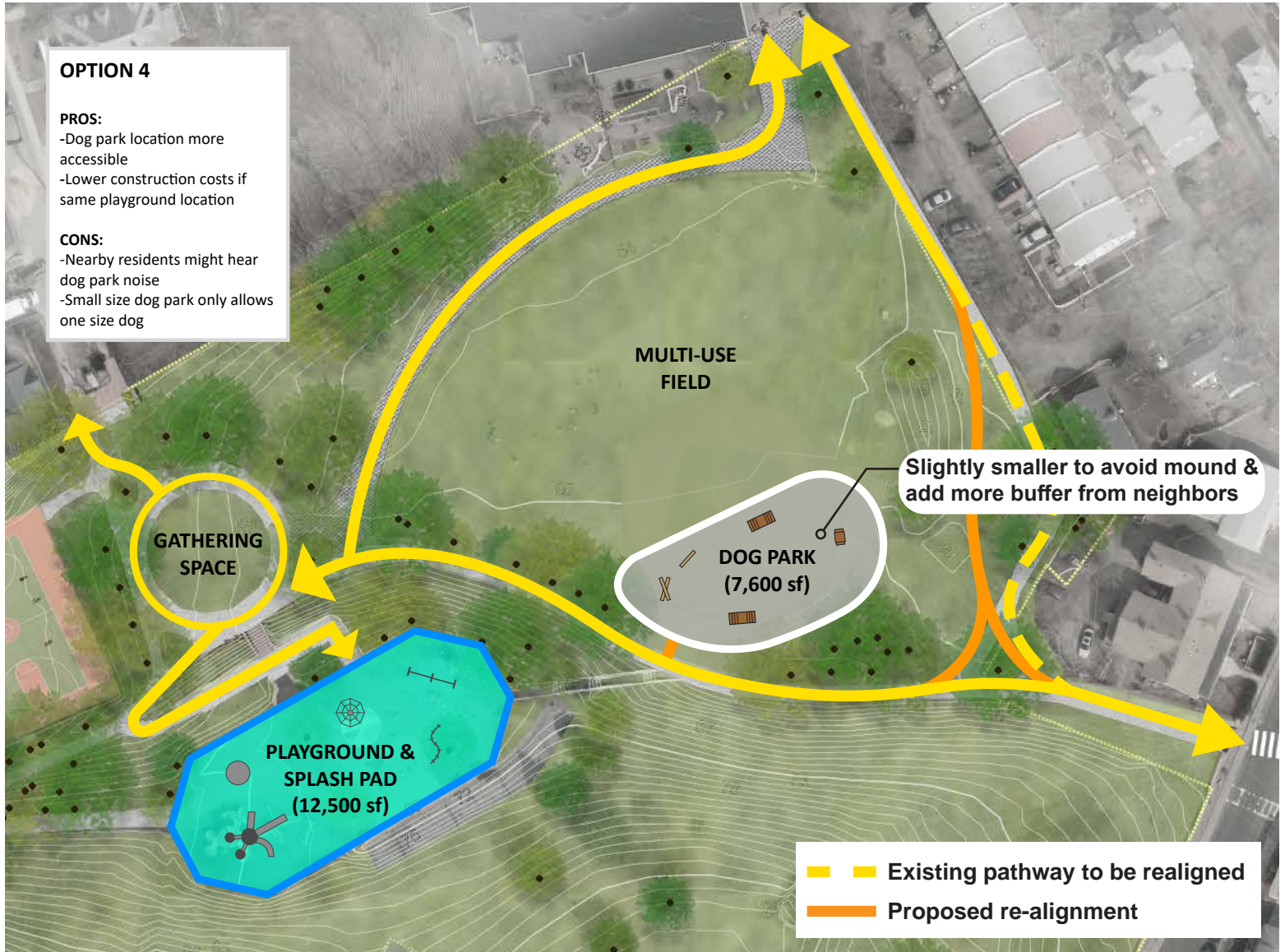
CONS:

- Nearby residents might hear playground noise

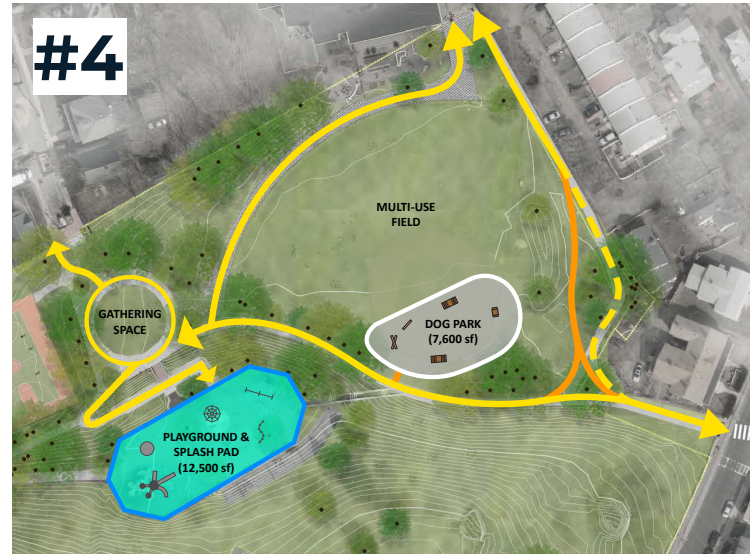
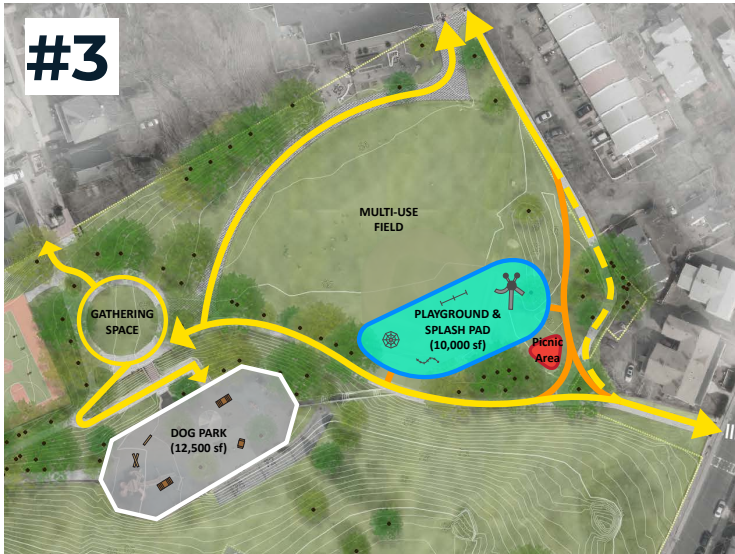


— Existing pathway to be realigned
— Proposed re-alignment

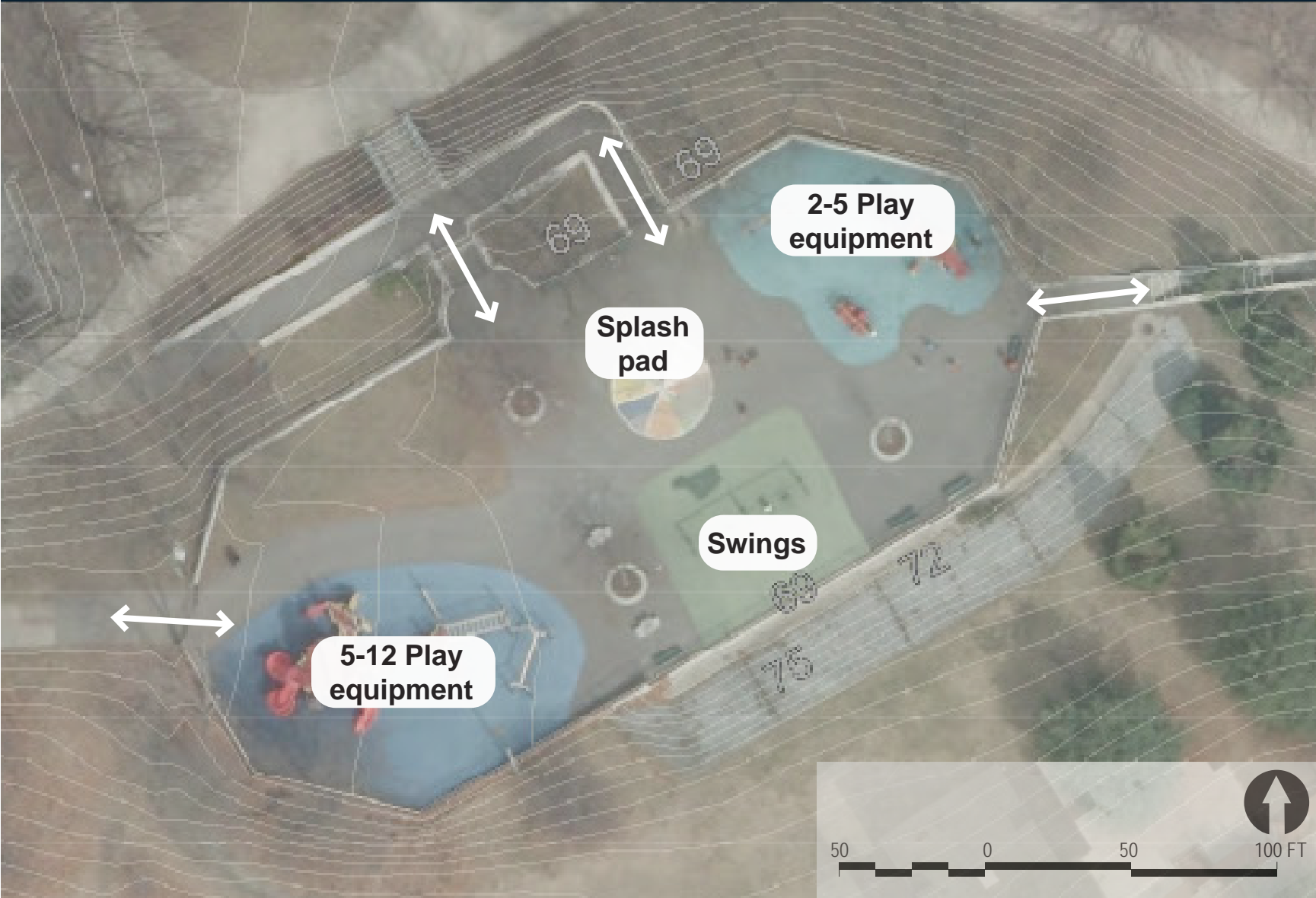
Site Plan Alternative #4



Site Plan Alternatives



Existing Playground Elements



Existing Playground Elements



SEATING



SWINGS



SPLASH PAD



TREES WITH GRATES



2-5 PLAY EQUIPMENT

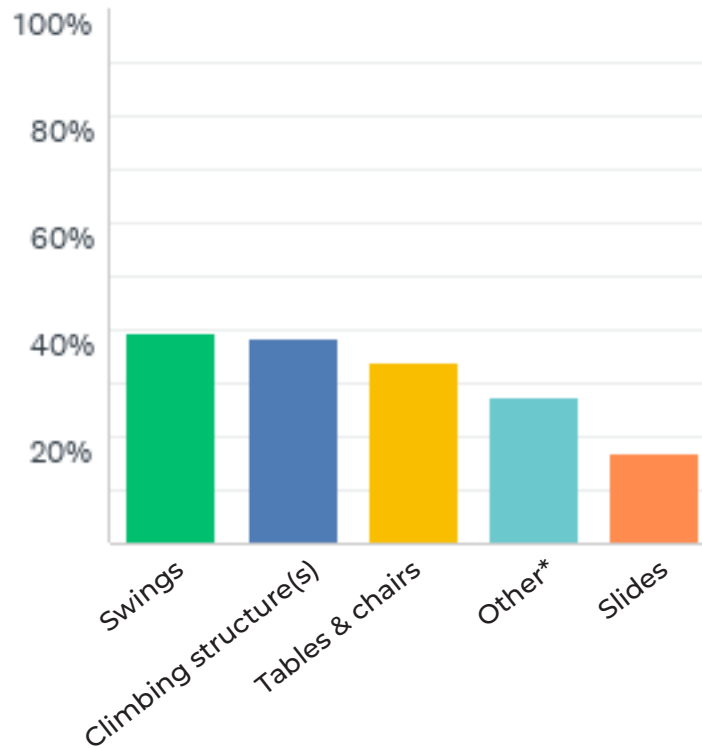


5-12 PLAY EQUIPMENT

PAST COMMUNITY FEEDBACK: Online survey

14. Do you have any "must haves" for the playground?

Top 5 "must-haves"



Proposed Playground Program

Existing:

- Underutilized space
- Poor layout
- Lack of shade
- Lack of ADA access
- Dated play equipment with limited play value

Goals:

- Create more inclusive playground features
- Better functioning splash pad/ water play
- More shade
- Better access
- More imaginative play features
- More efficient use of space

Playground Character



Source: <https://www.playlsi.com/en/commercial-playground-equipment/playgrounds/william-e.-sheridan-playground>

Post & Platform



Source: <https://www.playlsi.com/en/commercial-playground-equipment/playgrounds/gratiot-park/>

Linear Play



Source: <https://www.playlsi.com/en/commercial-playground-equipment/playgrounds/brydon-park/>

Climbing



Source: <https://www.kompan.com/en/us/inspiration/customer-cases/shangri-la-hotel>

Imaginative



Combination Play (platforms & rope)



Source: <https://www.playlsi.com/en/commercial-playground-equipment/playgrounds/sereca-park-elli-m.-schulman-playground>

Exploratory

Play Elements



Source: <https://www.playlsi.com/en/commercial-playground-equipment/playground-components/omnispin-spinner/>

Spinners



Source: <https://www.playlsi.com/en/commercial-playground-equipment/playground-components/bobble-rider-double/>

Spring riders



Source: <https://www.kompan.com/en/intl/products/play/freestanding/swings/classic-swings>

Swings



Source: <https://www.playlsi.com/en/commercial-playground-equipment/playground-components/funnel-climber/>

Climbers



Source: <https://www.playlsi.com/en/commercial-playground-equipment/playground-components/ball-maze-panel2/>

Play walls



Source: <https://www.kompan.com/en/intl/products/play/nature-play/robinia-play-act-and-learn>

Imaginative

Sensory



Source: <https://www.playlsi.com/en/commercial-playground-equipment/freestanding-playground-equipment/sensory-play/rhapsody-outdoor-musical-instruments/>

Musical



Source: <https://www.playlsi.com/en/commercial-playground-equipment/playground-components/marble-panel/>

Tactile



Source: <https://www.playlsi.com/en/commercial-playground-equipment/playground-components/roller-table/>

Motion



Source: <https://www.playlsi.com/en/commercial-playground-equipment/playground-components/kaleidospin-panel/>

Visual



Source: <https://www.bcburke.com/products/product/inclusive-orbit>

Spinning



Source: <https://goric.com/all-products/talk-tubes/>

Auditory

Water



Source: <https://www.vortex-intl.com/projects/plaza-1-de-octubre/>

Spray features



Simple water jets



Source: <https://www.vortex-intl.com/products/gломis/>

Misting



Source: <https://www.plumbingsupply.com/colorfulmist.html>

Multi-generational Cooling



Source: <https://es.pinterest.com/pin/855965472961606512/>

Exploratory



Source: <https://goric.com/all-products/newtown-water-play/>

Water play tables

Dog Park

Design Criteria

- Size
- Distance from nearby residents
- Fencing
- Surfacing
- Access to water
- Furnishings
- Accessible
- Shade



PROPOSED DOG PARK AREA



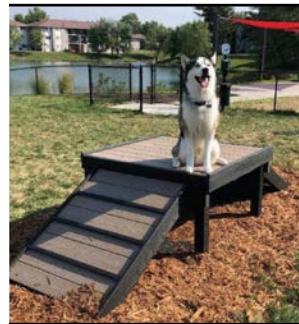
Source: <https://www.bringfido.com/attraction/3243>

PETERS PARK DOG PARK, SOUTH BOSTON



Source: <https://www.dogparkoutfitters.com/dog-park/bridge-climb-pro-34-h-training-incline/>

BRIDGE CLIMB



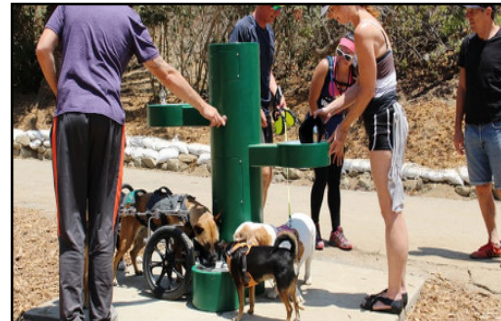
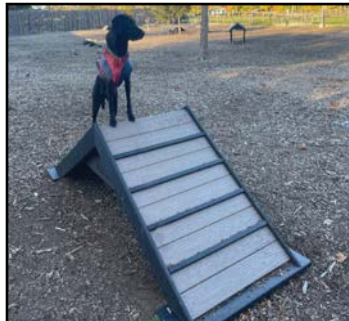
Source: <https://www.dogparkoutfitters.com/dog-park/hill-climb/>

HILL CLIMB



Source: <https://www.nsrwa.org/listing/scituate-dog-park/>

DOUBLE GATE ENTRY



Source: <https://www.murdockmfg.com/fountains-runyon-canyon-park>

DRINKING FOUNTAIN



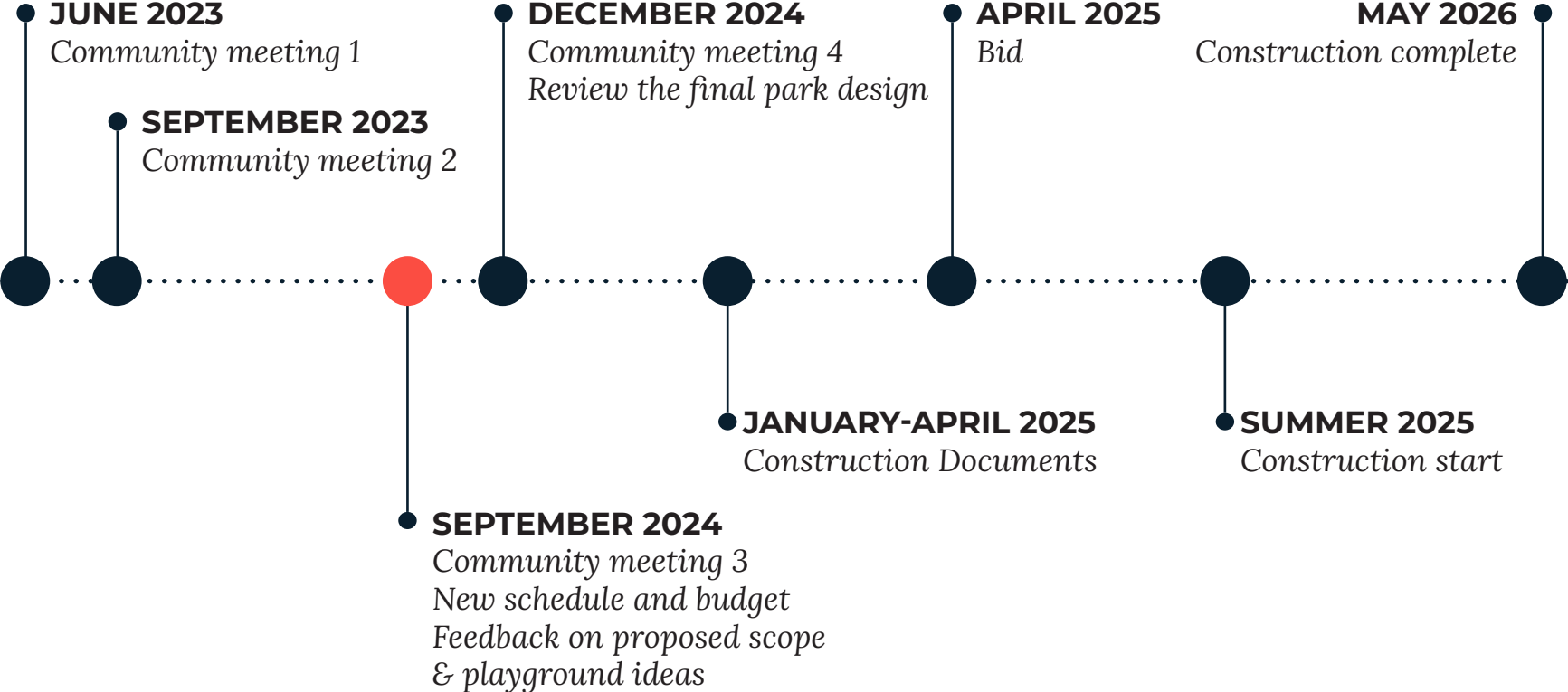
Source: <https://dogipot.com/junior-bag-dispensers/>

WASTE BAG DISPENSER

LISTENING & DISCUSSION



PROJECT TIMELINE



NEXT STEPS

PHASE 1 IMPROVEMENTS

- Advance design
- Community meeting #4 - December 2024

VISIT PROJECT WEBSITE

WEB LINK:

<https://www.boston.gov/departments/parks-and-recreation/ringer-park-improvements>

Scan me with your
phone's camera!



CONTACT

B Chatfield, BPRD Project Manager
abigail.chatfield@boston.gov
617-504-7709



THANK YOU!

See the project website for future updates.

For questions, maintenance requests or concerns regarding any of our parks contact 311



September 26, 2024
Boston Parks and Recreation

