

























## Great American Fenestration Company

I just want to add that only the window shown in the pictures with the A/C unit is a historical window, the other pair of mullied windows within one dormer are brosko vinyl jamb liner 1980's profile windows with no historical significance. Our plan is to make all three windows match the original historic details. Also we will be removing the storm windows shown in the pictures adding to a more historic look to the property. Please feel free to reach out with any questions, 603-660-4383 or [paul@greatamericanfenestration.com](mailto:paul@greatamericanfenestration.com)

Thanks,

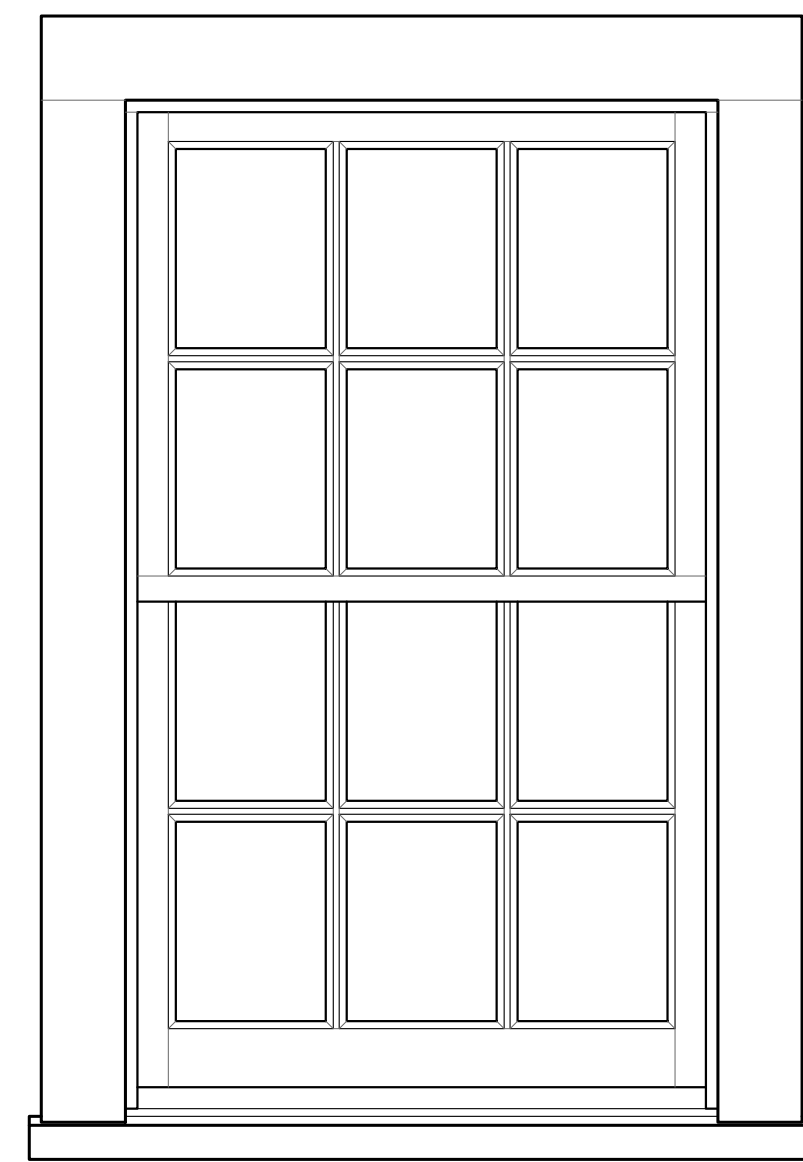
Paul Sipe

Great American Fenestration Company

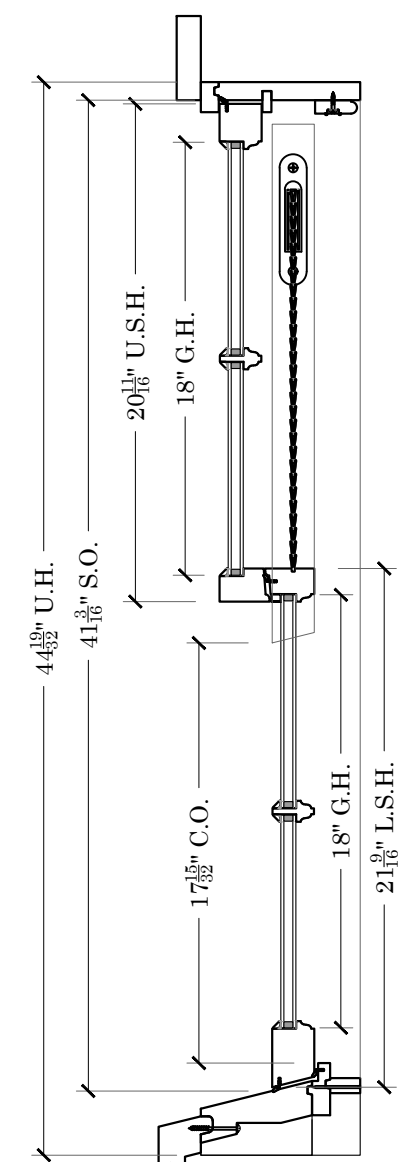
31 Westview Rd

Brookline NH 03033

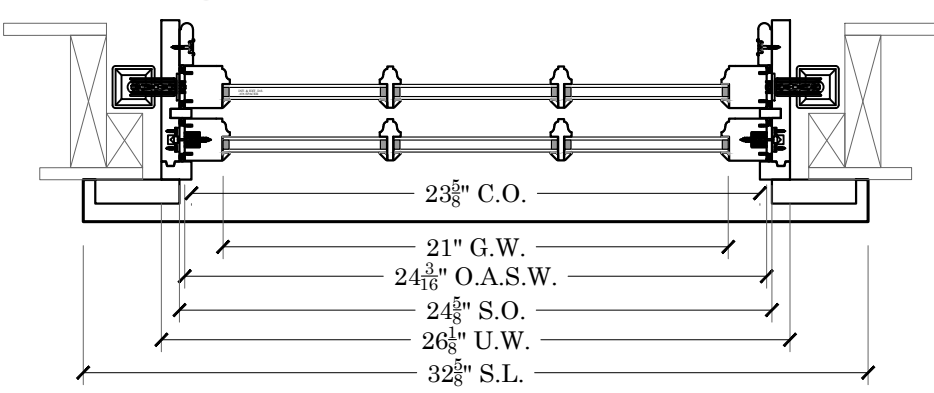
603-660-4383



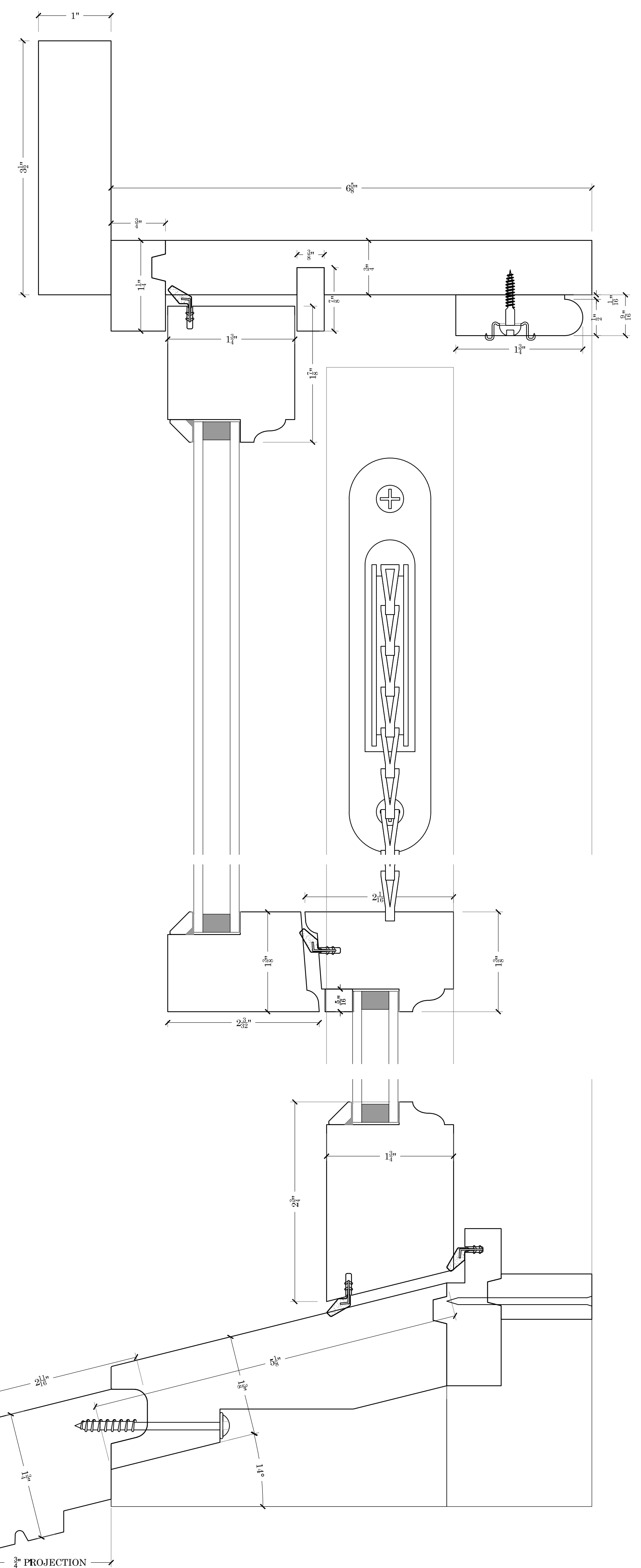
**ELEVATION**  
SCALE: 1/32"=1"



**SECTION B**  
SCALE: 1/32"=1"



**SECTION A**  
SCALE: 1/32"=1"



**SIZING**

- U.W. = G.W.+5-1/8"
- S.O.W. = G.W.+3-5/8"
- O.A.S.W. = G.W.+2-3/16"
- D.L.O.W. = G.W.-9/16"
- U.H. = (U.G.H.+L.G.H.)+8-11/16"
- S.O.H. = (U.G.H.+L.G.H.)+5-3/16"
- U.S.H. = U.G.H.+2-11/16"
- L.S.H. = L.G.H.+3-9/16"
- D.L.O.H. = G.H.-9/16"

**EGRESS INFO.**

- MINIMUM UNIT SIZES TO PASS 20"X24" C.O. MA. EGRESS
- SIZES BASED ON STANDARD 3/4" THICK WINDOW STOOL AND A 1" MAX HEIGHT SASH LOCK ALLOWANCE
- 24"X20" UNIT DIMENSIONS 26-1/2"W. X 49-11/16"H.
- 20"X24" UNIT DIMENSIONS 22-1/2"W. X 57-11/16"H.

**GENERAL NOTES**

**GLASS SCHEDULE**

UNITS	EXTERIOR	SPACER THICKNESS	INTERIOR	GRID & SPACER COLOR	HEAT TREATMENT
-	1/8 LOW E	3/8"	1/8" CLEAR	BLACK	ANNEALED

**MATERIAL AND FINISH SCHEDULE**

PART OR ASSEMBLY	MATERIAL	FINISH
FRAME	UTILE	(PRIME ONLY) WHITE INTERIOR & EXTERIOR
SASH	UTILE	(PRIME ONLY) WHITE INTERIOR & EXTERIOR
SILL	ALASKAN YELLOW CEDAR	(PRIME ONLY) WHITE
CASING	ALASKAN YELLOW CEDAR	(PRIME ONLY) WHITE
INTERIOR STOPS	PINE	(PRIME ONLY) WHITE
EXTENSION JAMBS	PINE	(PRIME ONLY) WHITE

**SIGN OFF NOTES**

- ALL SHOP DRAWINGS MUST BE SIGNED OFF WITHOUT ANY CORRECTIONS FOR PRODUCTION TO BEGIN
- IF YOU REQUIRE CHANGES PLEASE MARKUP DRAWINGS & RESUBMIT TO ENGINEERING@BOSTONSASH.COM

**APPROVED FOR MANUFACTURING**

DEALER	DATE
CONTRACTOR	DATE
ARCHITECT	DATE

**BOSTON SASH & MILLWORK**  
667 SPRING STREET  
NORTH DIGHTON, MA 02764  
PHONE # (508) 880-8808  
WWW.BOSTONSASH.COM

**HARDWARE**

**SUB./REVISION**

NO.	DESCRIPTION
1	
2	
3	
4	
5	

**JOB:** BEACON HILL Ogee Hybrid  
6-5/8" WESTERN FRAME  
**DESCRIPTION:** HISTORIC 2 PIECE SILL ELEVATION, SECTIONS & DETAILS  
**DEALER:**  
**DEALER CONTACT:**  
**DRAWN BY:** KEITH KUTHAN  
**DRAWING NUMBER:**  
**JOB NUMBER:**  
**CUSTOMERS P.O.#:** DWG. NO. **1**  
**DATE:** 4/3/2023  
**SCALE:** NOTED **SHEET:** 1 OF 1