



Bluebikes Expansion

*Open House at the Civic Pavilion
July 22, 2024*

Today's Open House

1. Provide information about the need for expansion.
2. Share potential sites we have identified.
3. Ask for input on which sites would be best for the neighborhood.



Bike share today

- ▶ 450+ stations (270+ in Boston)
- ▶ 4500 bikes (2000 in Boston), including ~750 ebikes
- ▶ Publicly owned, operating in 13 municipalities
 - Lyft = operator
 - BCBS of MA = title sponsor
 - Municipalities = owners



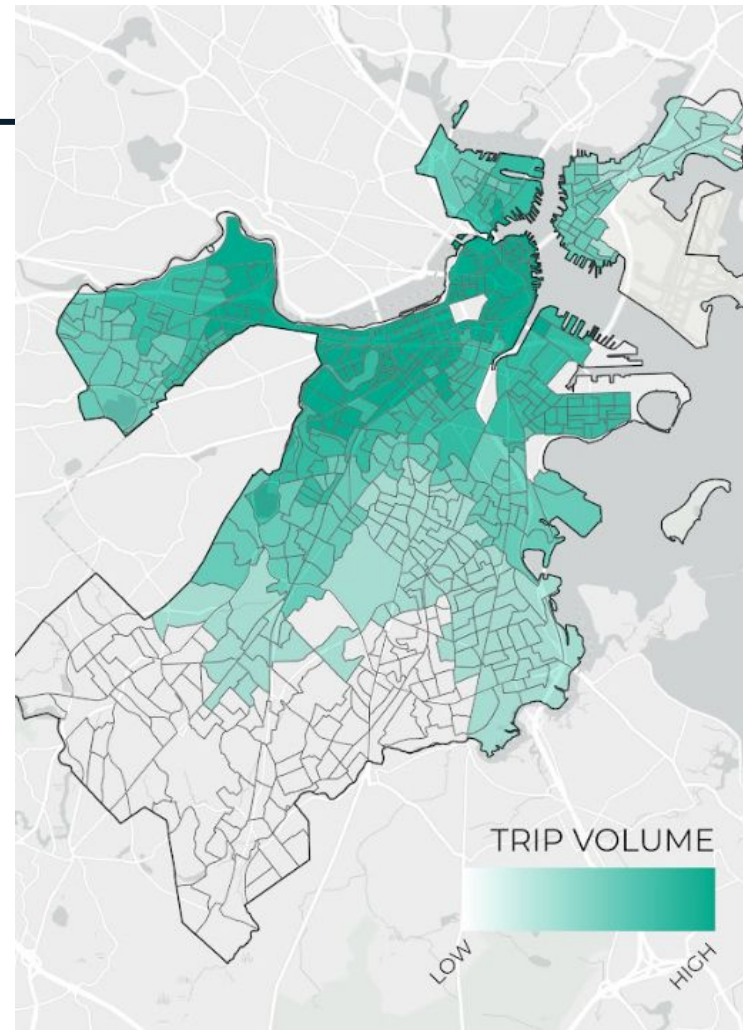
Boston residents ride for less with the Boston Bikes Pass



- ▶ Long-time income-eligible pass options:
 - \$50/year or \$5/month
- ▶ New discounts for Boston residents launched in October 2023
 - **\$5/year for income-eligible residents**
 - **\$60/year for new members** (have not had an annual membership in the last three years)

Millions of trips taken

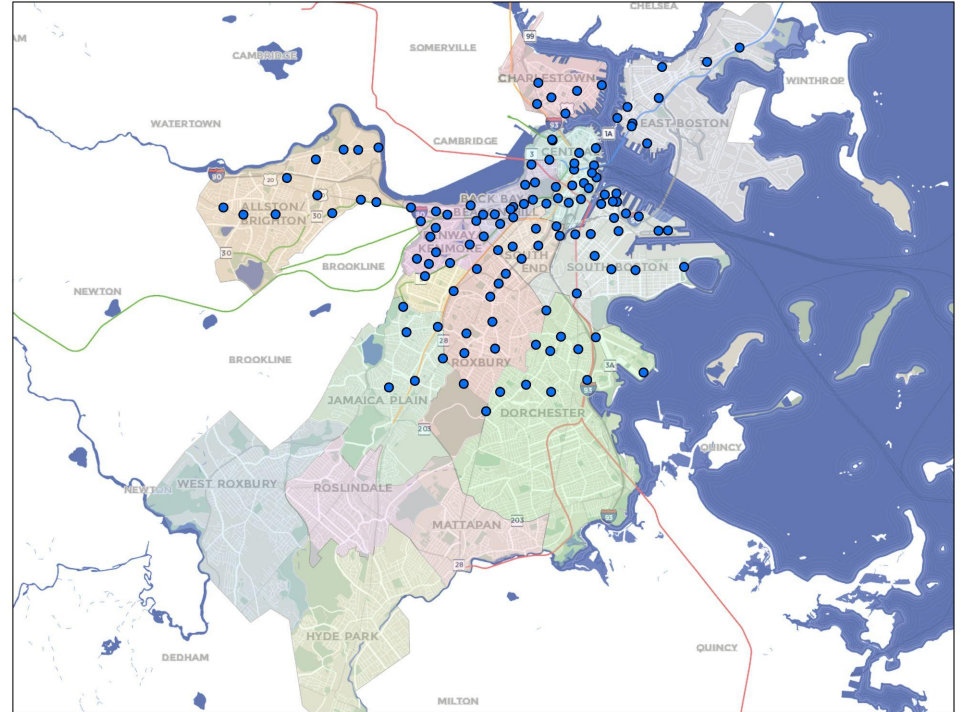
- ▶ Almost **2 million trips** were taken on Bluebikes *just in Boston* in 2023 (and 3.6 million systemwide).
- ▶ **More than a third** of those trips started in the South End and Downtown.



In Boston, bike share is (almost) everywhere!

- ▶ Go Boston 2030 goal: Every household within 10-minute walk of bike share.

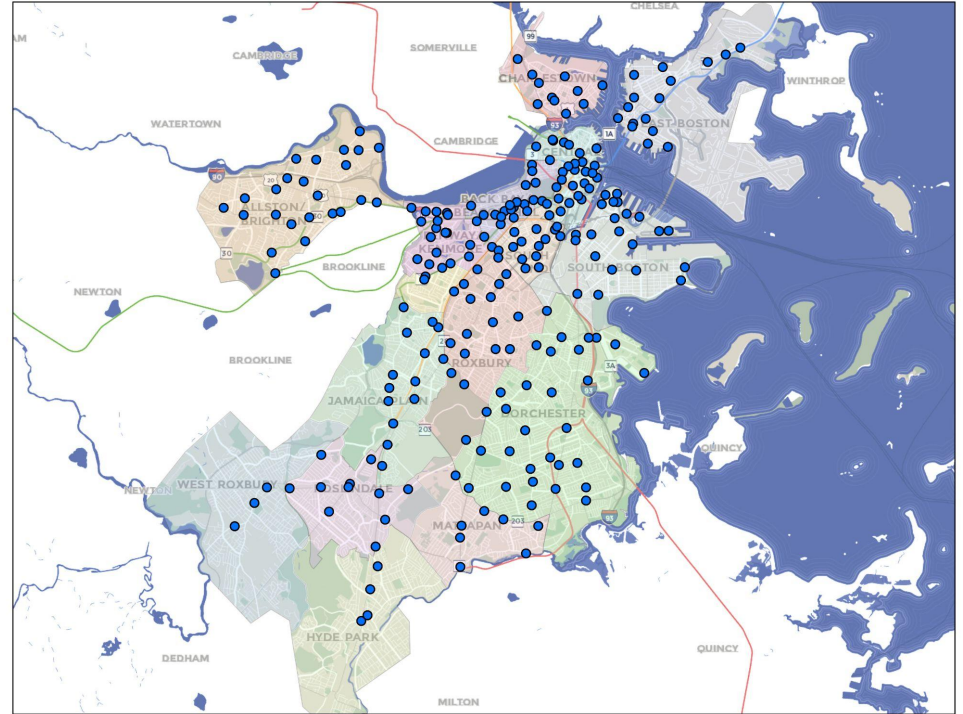
BOSTON BLUEBIKES STATIONS IN 2017



In Boston, bike share is (almost) everywhere!

- ▶ Today Bluebikes is in every neighborhood.
- ▶ ~89% of households are within a 10-minute walk.

BOSTON BLUEBIKES STATIONS TODAY



Expanding the system

100 new stations installed by Summer 2025 (~40% increase in Boston)

Infill Stations

Enhancing Service in High Demand Areas

Serving Latent Demand

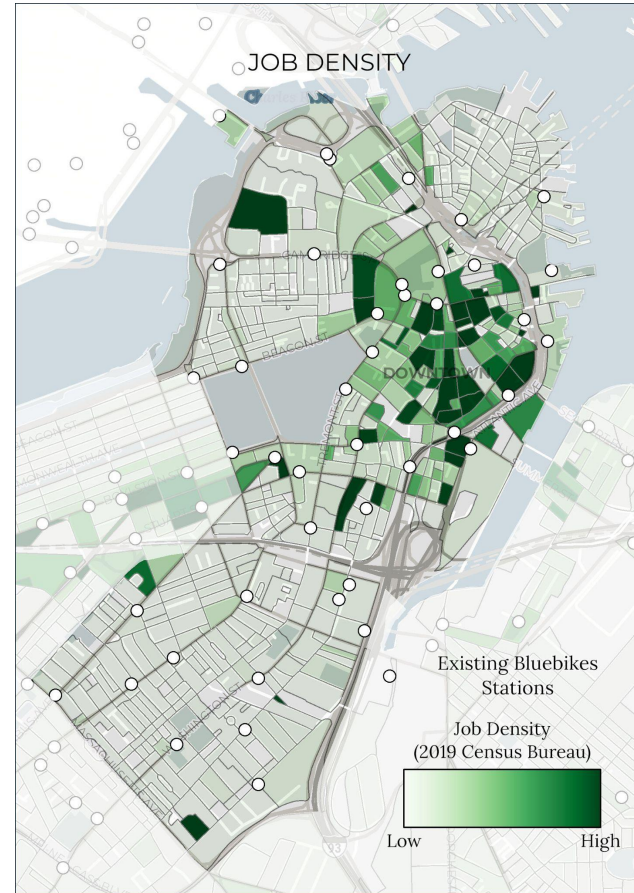
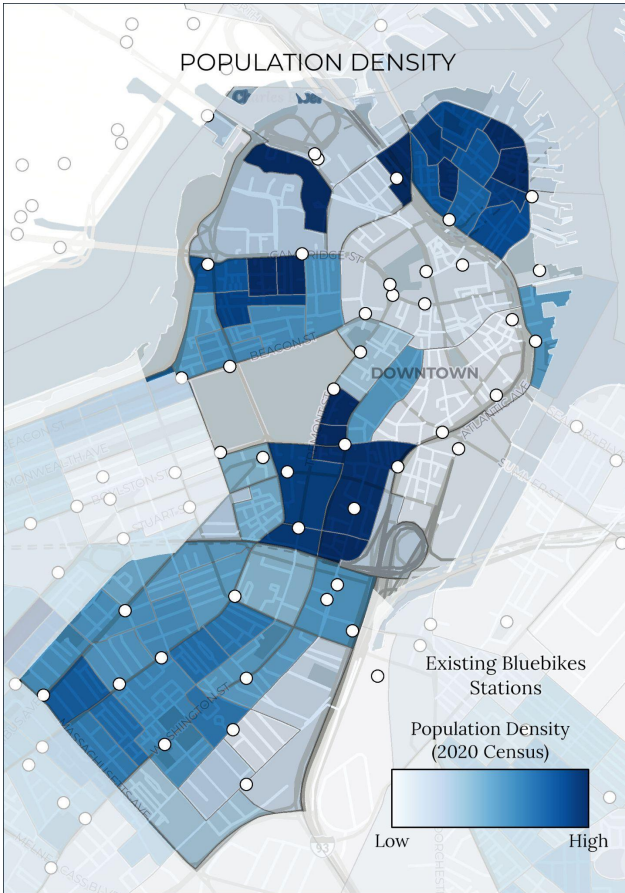
Filling Gaps in the Network

Expansion Stations

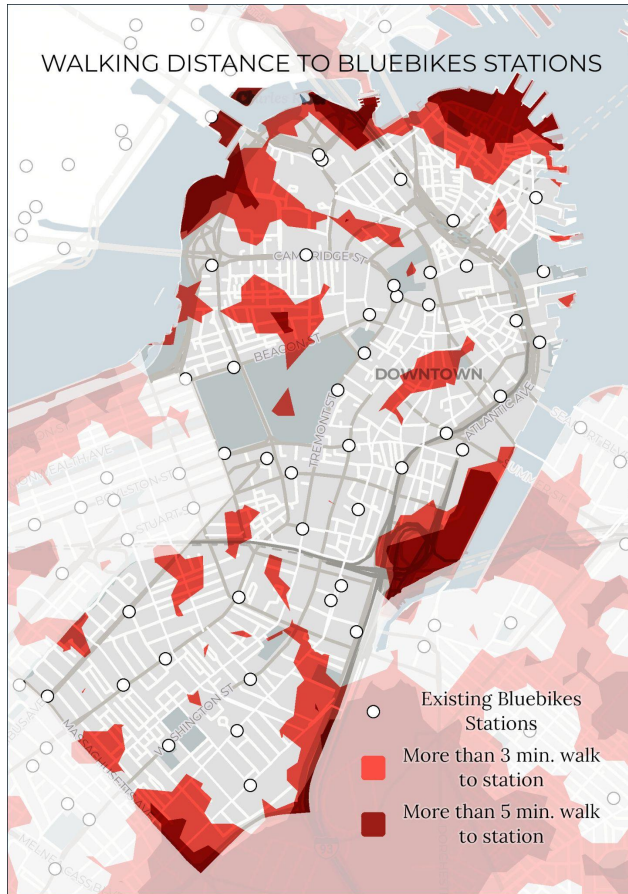
Increasing Access to the Network

Strengthening Edges of Current Network

Analyzing the need

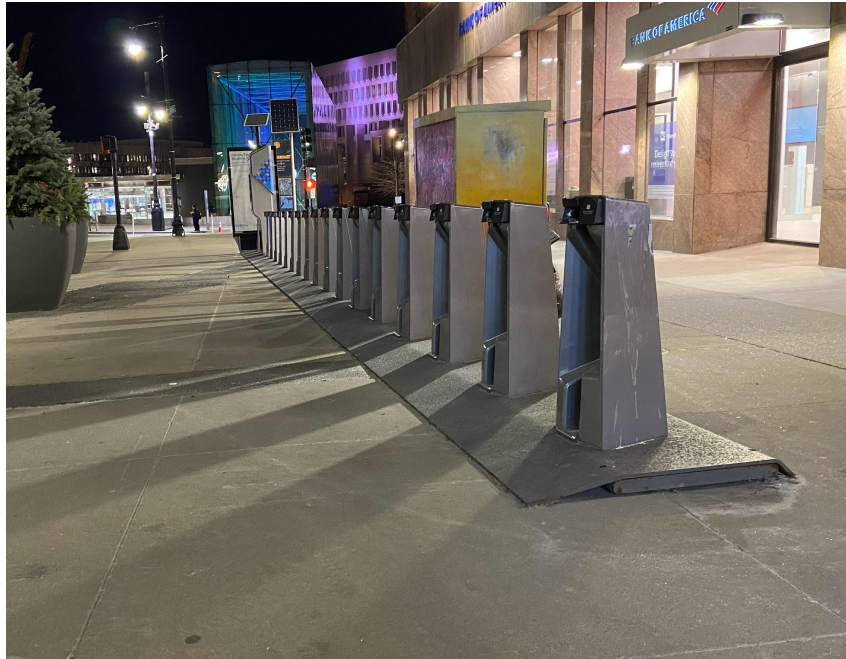


Analyzing the need



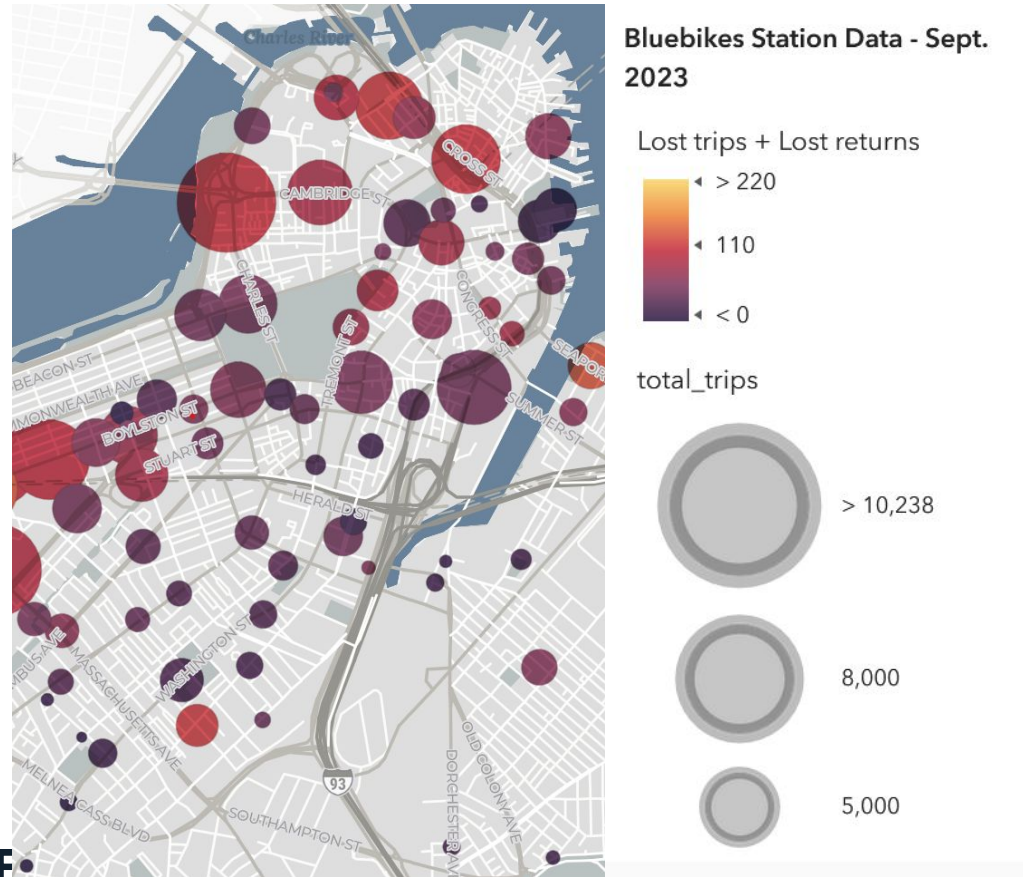
- ▶ In areas with the most jobs and population density, our goal is to have bike share within a 3 minute walk
- ▶ Areas in light red are 3-5 minutes walk from a station. Dark red is over 5 minutes walk from a station.

Analyzing the need



- ▶ “Lost trips” is an estimate of how many trips didn’t occur because there are no bikes available at the station
- ▶ We use the amount of time each station was empty in a month combined with the number of trips that typically start at that station

Analyzing the need

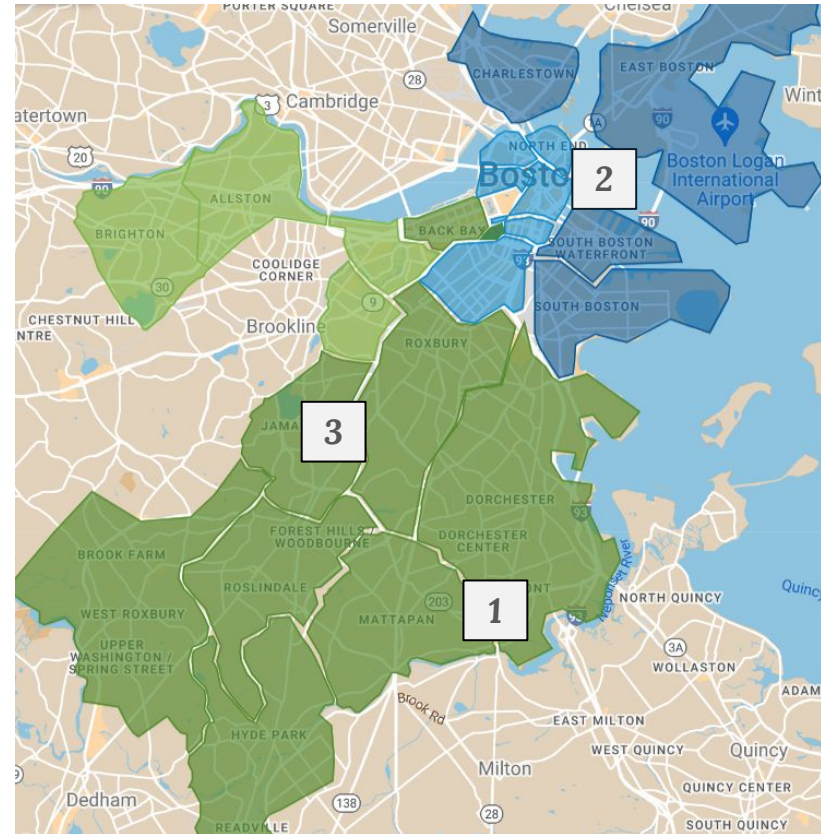


- ▶ Beacon Hill, Bay Village, Chinatown, Downtown, North End, and parts of the South End experience high numbers of lost trips.

We're growing in phases

We are adding new stations in three phases.

- ▶ In **Phase 1**, we added 8 new stations in Mattapan and Dorchester in 2023 to support the Red Line shutdown.
- ▶ In **Phase 2**, we aim to add 42 stations (Oct. - Dec 2024)
- ▶ In **Phase 3**, we aim to add 50 new stations (Spring 2025)



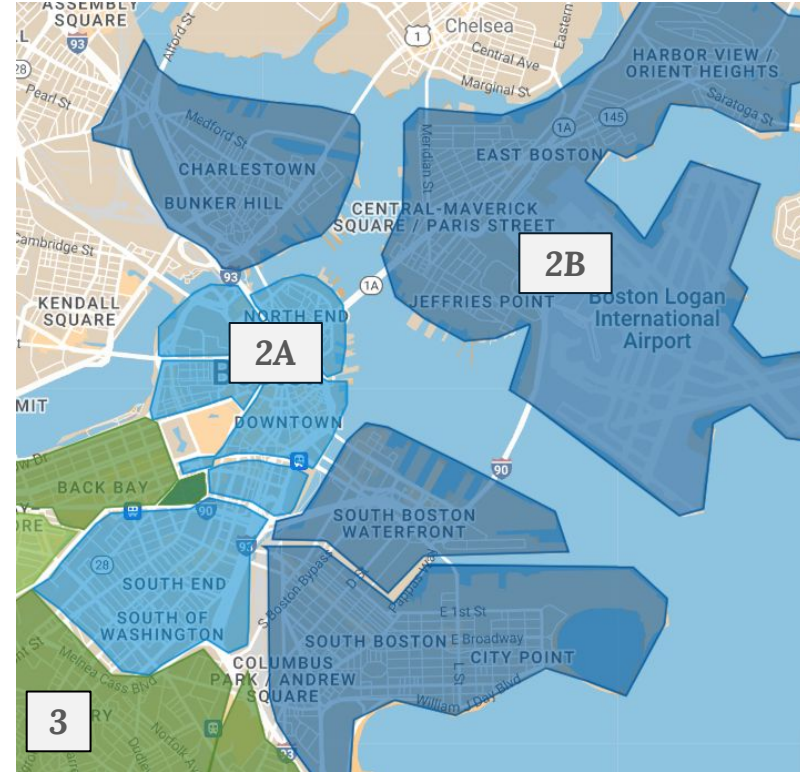
Phase 2

Phase 2A: South End, Chinatown, Beacon Hill, Downtown, West End, North End

- ▶ Jul - Aug 2024 | Community engagement
- ▶ Sep - Oct 2024 | Installation
 - South End: 5-7 new stations
 - Downtown: 17-22 new stations

Phase 2B: South Boston, Waterfront, Charlestown, East Boston

- ▶ Sep - Oct 2024 | Community engagement
- ▶ Nov - Dec 2024 | Installation



Community engagement for this phase

- ▶ 3 Open Houses
 - July 22, Civic Pavilion (today!)
 - July 30, Copley Library
 - August 14, virtual
(bit.ly/expansion-august)
- ▶ Online Surveys
(boston.gov/bike-share-survey)
 - We've posted signs at about half of the sites directing people to the surveys. We'll finish the rest this week.

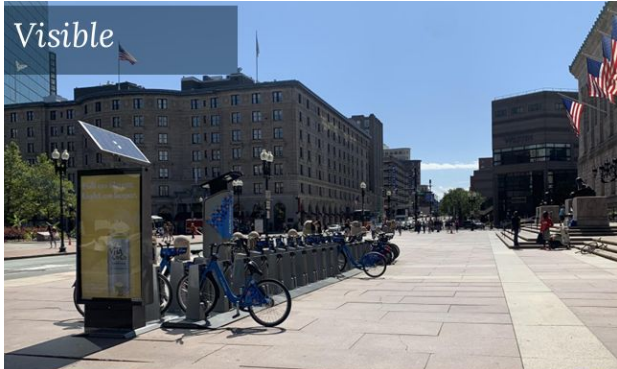


What's next for us?

- ▶ Consider all comments from Open Houses, surveys, and email
- ▶ Narrow down our list of sites
- ▶ Finalize locations and get permits

Station siting requirements

Good locations are...

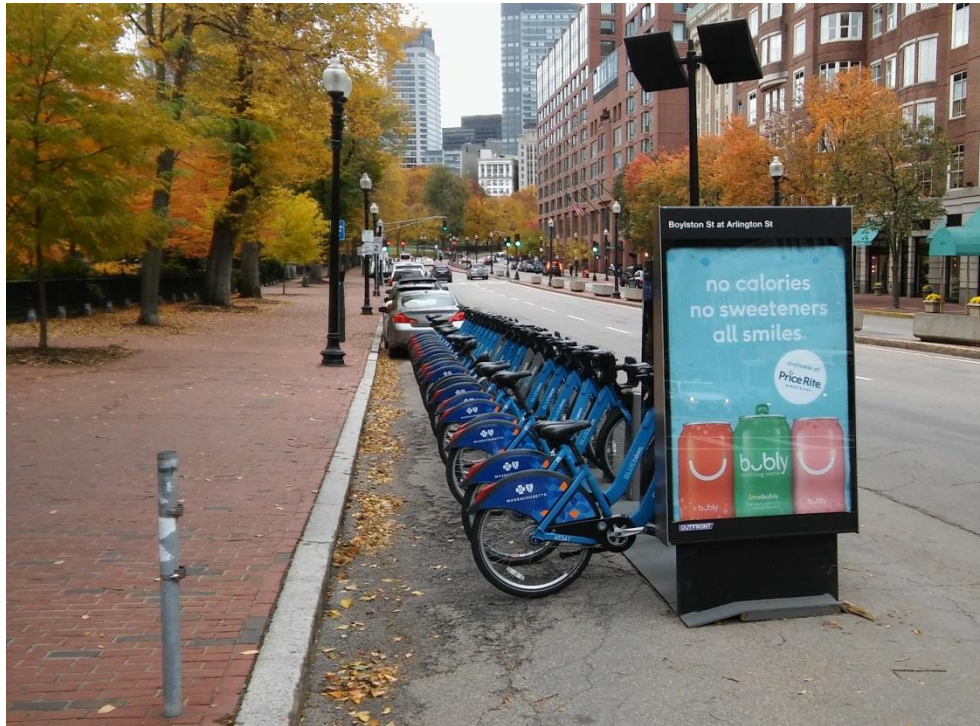


Off-Street: Sidewalks, Plazas

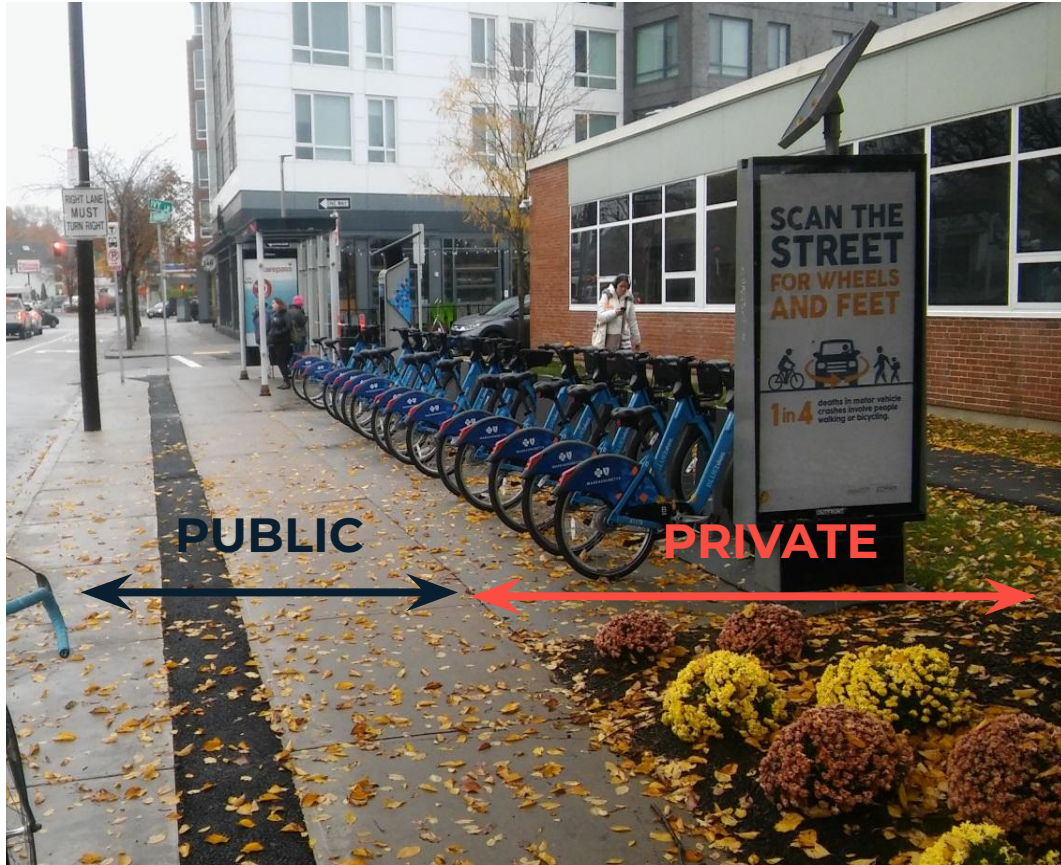


In-Street: Parking Lanes

A station with parking for 15 bikes takes the same space as two cars



Private Property



Other Agencies and Departments

*MBTA and DCR will sometimes host our stations
Agencies/departments must agree and sign legal documents*



Review sites and share your thoughts

- ▶ *Where do you travel to/from in this neighborhood?*
- ▶ *What do you like/dislike about the site?*
- ▶ *What do you know about the site that we might not know?*

Ideas? Questions? Comments?

- ▶ boston.gov/bike-share-expansion
- ▶ bikeshare@boston.gov