



**Dorchester Park
Community Meeting #3
Meeting Notes**

Date: May 28, 2024
Time: 6:00pm – 7:00 pm
Location: Zoom

Attendees

Nelle Ward - Project Manager, Boston Parks and Recreation Department [BPRD]
Lauren Bryant, Former Project Manager, [BPRD]
Shanna Dixon, Community Outreach Coordinator, [BPRD]
Interpreters
Ray Dunetz - Principal, Ray Dunetz Landscape Architecture [RDLA]
Community Members

The following summarizes the meeting discussion:

1. Presentation of the PowerPoint
 - a. Nelle welcomed Community to the third and final public meeting, described the interpretation channels, introduced the four interpreters, reviewed virtual meeting etiquette, zoom tips, project overview, agenda, team introductions, project schedule, park design goals, City of Boston goals, Parks and Recreation goals and project scope of work. Refer to the attached PowerPoint for detailed text content relating to these topics;
 - b. Nelle presented the agenda including team introductions, project information, existing conditions, site analysis, proposed pathway improvements, listening and discussion and next steps;
 - c. Nelle discussed the project schedule/funding and explained why the process has taken longer than anticipated due to staffing issues. They took over the project when they started with BPRD in August of 2023. The team has been working behind the scenes acquiring variances from the Massachusetts Architectural Access Board [MAAB] which has taken more time. Nelle described that process. Looking ahead after today's meeting the design team will develop the design this summer and finalize construction documents by the end of the year. The project will go out to bid in 2025 and begin construction in the spring of that year. Work should be completed with a park opening by the end of the fall that year.
 - d. Nelle stated the budget has been increased to \$2,000,000 from the original budget of \$1,500,000 which will address all the accessibility issues in the park;
 - e. Nelle stated that we are requesting feedback from the community, which can be verbally expressed or typed in the chat, on issues that you would like to see addressed in the design;
 - f. Ray presented the Site Analysis and Final Concepts including Context/Location, Historical Development, Site Analysis/Program Elements, Materials, Accessible/Inaccessible Paths and Stairs.
 - g. Ray presented proposed path materials, memorial tree location, accessible path locations and entrances, and MAAB variance path locations.
 - h. Ray stated that grading will be carefully designed to avoid impacts to any large trees during the engineering process;
 - i. Ray presented the five areas that received the MAAB variance and discussed the plans for each area;
 - j. Nelle stated that despite not all paths being compliant with ADA, there are enough ADA paths to get to all the site features and provide at least one accessible entrance at each side of the park;
 - k. See attached PowerPoint for diagrams describing the accessibility improvements.

2. Nelle reviewed the questions that were submitted via chat;
 - a. A community member asked how are the old growth trees being protected with the grading?
 - i. Nelle answered that the grading will be minimized near existing trees and root zones;
 - ii. There may be a couple of instances where we may need to remove a tree, but before that happens the City will conduct a tree hearing to get public feedback before construction;
 - iii. Protecting trees is a main priority for BPRD.
 - iv. Trees will be protected during Construction
 - b. A community member asked what is the team's thought regarding the Hutchinson Street?
 - i. Hutchinson will not be regraded.
 - ii. The park entrance and pathways will be designed to be accessible.
 - c. A community member asked what are the drainage plans?
 - i. Ray discussed the process. RDLA and our engineering consultant will review how much additional runoff new paths will create and design the grading and drainage to accommodate runoff.
 - ii. RDLA hopes that cleaning the existing drainage system and fixing the gutters will improve the drainage.
 - d. A community member asked if we will protect the historic intent of the project?
 - i. Ray explained that many of the improvements have been made were not in concert with the Olmsted Plan.
 - ii. We are maintaining the same path configurations.
 - iii. We are not doing anything new that isn't already located in the park.
 - iv. Lauren mentioned that the park is not a Boston Landmark so it does not fall under the same protections of other Boston Landmarks. BPRD will make every effort to protect the historic character of the park despite it not being a Boston Landmark.
 - e. A community member asked where are the handicap parking spaces going to be?
 - i. BPRD does not have control over adding parking spots in the street. Street parking is within the purview of Public Works.
 - ii. Lauren has been working with the Disability Commission on a map to locate HC spaces. Lauren is representing Parks to advocate for more HC spaces near parks.
 - f. A community member asked are we able to add benches along the paths?
 - i. Nelle explained site furnishings did not fit within the budget, but we can provide in the Bid Documents as Add Alternates.
 - ii. Only accessibility improvements
 - g. A community member asked if the scope can include the repair or replacement of bulletin boards?
 - i. Nelle said BPRD may be able to tap into other funds to repair the bulletin boards. They will look into that.
 - ii. Lauren suggested the Friends group consider CPA funds for improvements not included in the pathways project.

The author assumes this to be an accurate transcription of this meeting unless notified otherwise in writing from those present within five business days.

Prepared By:



Ray Dunetz, PLA, ASLA
Principal

Attachments: PowerPoint Presentation
Cc: Attendees, File



Community Meeting #3
Improvements to
DORCHESTER PARK PATHWAYS



May 28, 2024
Boston Parks and Recreation



Zoom Interpretation Services



English: For interpretation in [____],

1. Go to the horizontal control bar at the bottom of your screen. Click on “Interpretation.”
2. Then click on the language that you would like to hear.
3. You are now accessing this meeting in [____]

Vietnamese: Cho thông dịch Tiếng Việt

1. Tìm thanh điều khiển ngang phía dưới màn hình của bạn. Bấm vào từ: "Interpretation"
2. Sau đó chọn lựa ngôn ngữ mà bạn cần lắng nghe.
3. Hiện tại bạn đang tham gia buổi họp bằng Tiếng Việt

Cabo Verdean Creole: Gossim bu ta entra na reuniao na kriolu,

1. Bai na barra de controlo horizontal na parte inferior di computador bu kalka na "Interpretation".
2. Depos kalka na idioma qui bu kre ovi.
3. Agora djabu sta ta entra na reuniaun em creole.

Haitian Creole: Pou entèpretasyon Kreyòl ayisyen,

1. Ale nan kontwòl ba nan pati anba ekran an epi Klike sou "Interpretation"
2. Apre sa, klike sou lang ke ou ta renmen tande a.
3. Kounye a ou gen aksè a reyinyon an Kreyòl ayisyen

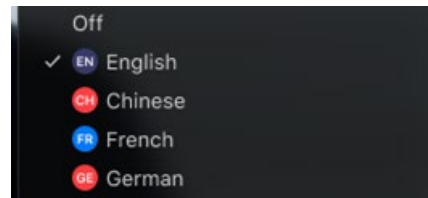
Spanish: Para traducción en Español,

1. Vaya a la parte baja de la pantalla, en la barra horizontal, y presione la tecla “Interpretation”.
2. Luego seleccione el idioma que desea escuchar.
3. Después de seleccionar, usted entrará a la reunión en el idioma “Español”.

1.



2.



3.





Community Meeting #3
Improvements to
DORCHESTER PARK PATHWAYS



MEETING RECORDING



The Boston Parks and Recreation Department will be recording the meeting and posting to our project webpage for those who are unable to attend the Zoom meeting live.



It is possible that participants may also be recording the meeting with their phones cameras or other devices. If you do not wish to be recorded during this meeting, please keep your microphone muted and camera off.

*Please share with your neighbors and friends,
[**boston.gov/dorchester-park**](https://boston.gov/dorchester-park)*

VIRTUAL MEETING ETIQUETTE

We want to ensure this conversation is a pleasant experience for all and that all community members/stakeholders are comfortable sharing their comments, questions and feedback.

Please be respectful and mindful of each other's time when asking questions/ providing comments, so that all attendees are able to participate in the meeting.

Keep questions/ comments project-specific and not personal to yield solution-driven discussion.

Please wait until all attendees have had the opportunity to ask a question/ provide a comment before providing additional questions/ comments.

*You can always set up a conversation with **Nelle Ward**, nelle.ward@boston.gov, to further discuss the project or process.*

ZOOM TIPS

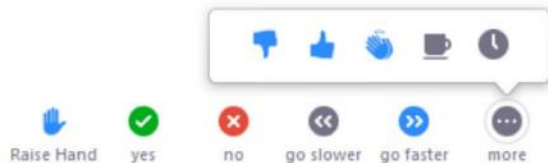
Here is how you can participate during the question and answer part of the presentation.

DURING THE PRESENTATION:



VIA WEB:

Turn video on / off.



To use these non-verbal options click on participants (bottom of screen); these options will pop up in side bar.

DURING THE Q&A:



JOINING VIA PHONE?

Use *9 to raise hand to ask for audio / video permission to ask questions or provide comments.



VIA WEB:

Chat to ask questions / comments or provide responses to poll questions



Raise hand to ask for audio / video permission to ask questions or provide comments.

PROJECT OVERVIEW

A photograph of a forest path in autumn. The path is covered in fallen brown leaves and leads into a dense forest of trees with some autumn-colored foliage. On the left side of the path, there is a large, smooth, grey rock. In the distance, a person wearing a yellow shirt is walking away from the camera. The sky is clear and blue.

AGENDA

1

PROJECT TEAM INTRODUCTION

2

PROJECT INFORMATION

3

EXISTING CONDITIONS | SITE ANALYSIS

4

PROPOSED PATHWAY IMPROVEMENTS

5

LISTENING & DISCUSSION

6

NEXT STEPS

PROJECT TEAM

NELLE WARD

Project Manager

nelle.ward@boston.gov or 617-961-3035

THAMMY PIERRE-LOUIS

Community Outreach Coordinator

thammy.pierrelouis@boston.gov or 617-635-4863

RAY DUNETZ

Principal, Ray Dunetz Landscape Architecture, Inc.

rd@raydunetz.com or 617-524-6265

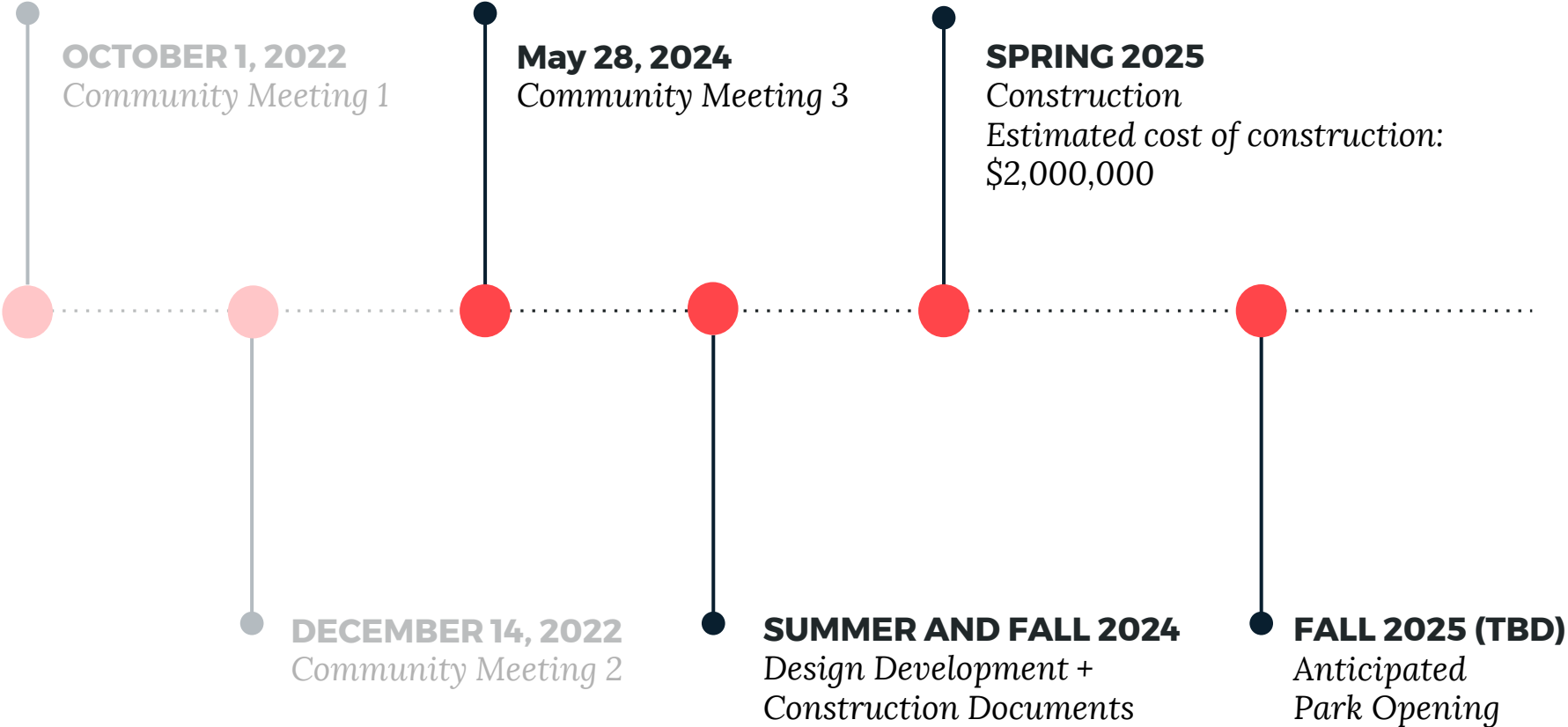
ROSS COCHRAN

Office of Neighborhood Services

ross.cochran@boston.gov or 617-635-4819



PROJECT SCHEDULE & FUNDING





City of Boston
Priorities

Safety Guidelines+
Regulatory
Guidelines

**PARK
DESIGN**

Parks + Recreation
Goals

Community
Input

CITY OF BOSTON PRIORITIES

- **Family Friendly**
- **Green and Growing**
- **Health and Safe**
- **Delivering Exceptional City Services**
- **Closing the Racial Wealth Gap**



PARK & RECREATION GOALS

- **Accessible and available to all**
- **Diverse, balanced, and efficient mix of uses**
- **Meaningful and inclusive community engagement**
- **Adaptive and resilient landscapes**
- **Promote connections**



SCOPE OF WORK

- **Repave pathways in Dorchester Park to improve conditions and accessibility**
- **Assess and repair entrance and stairways for accessibility**



SITE ANALYSIS

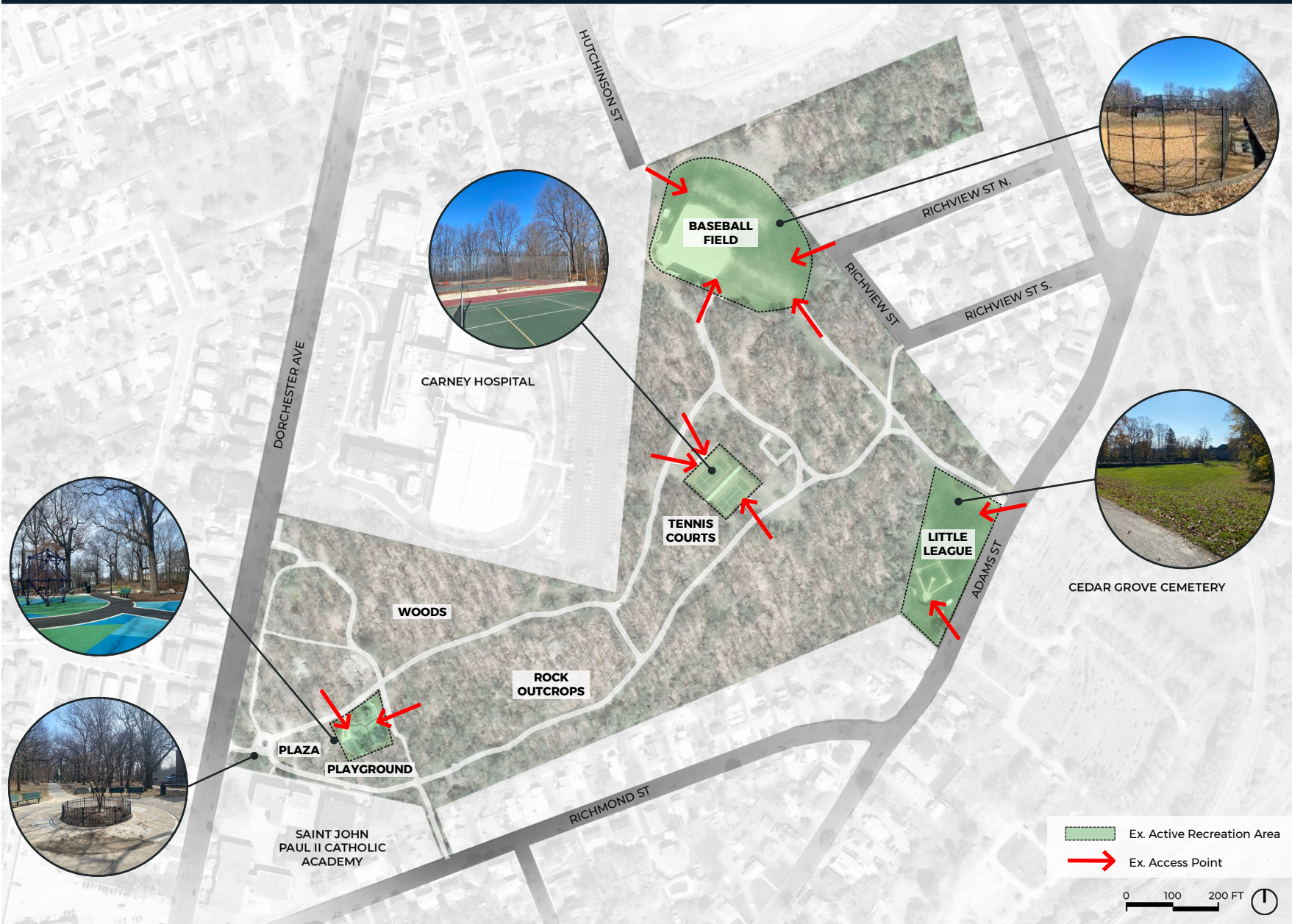
A photograph of a dirt path in a forest during autumn. The path is covered in fallen brown leaves and leads into a wooded area. On the left side of the path, there is a large, smooth, grey rock. The trees are mostly deciduous with some green and some yellowing leaves. A person wearing a yellow shirt is visible in the distance on the path. The sky is clear and blue. The text "SITE ANALYSIS" is overlaid in white, bold, sans-serif font on the left side of the image.

SITE CONTEXT

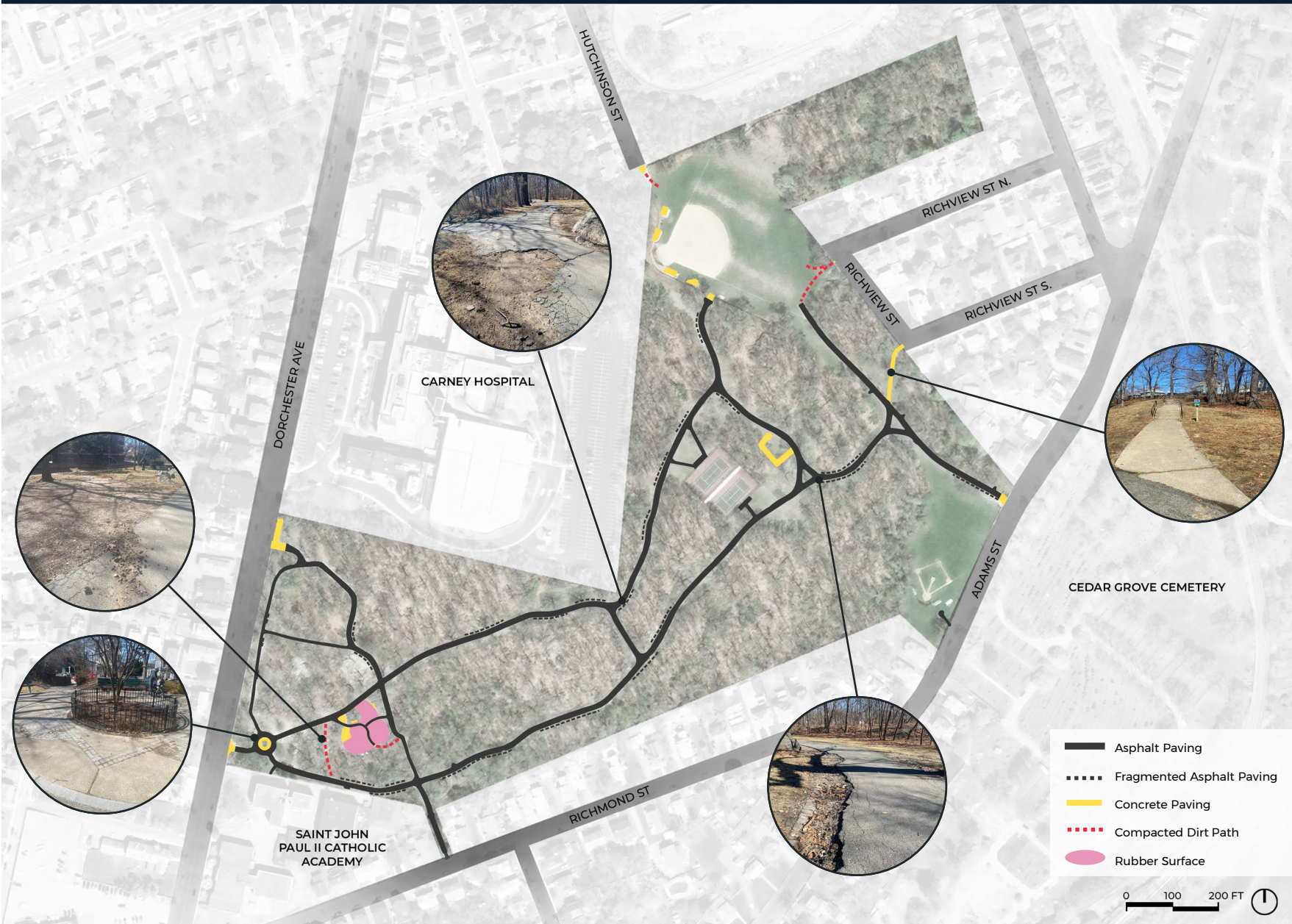


- MBTA - Mattapan Trolley
- - - Neighborhood Boundary

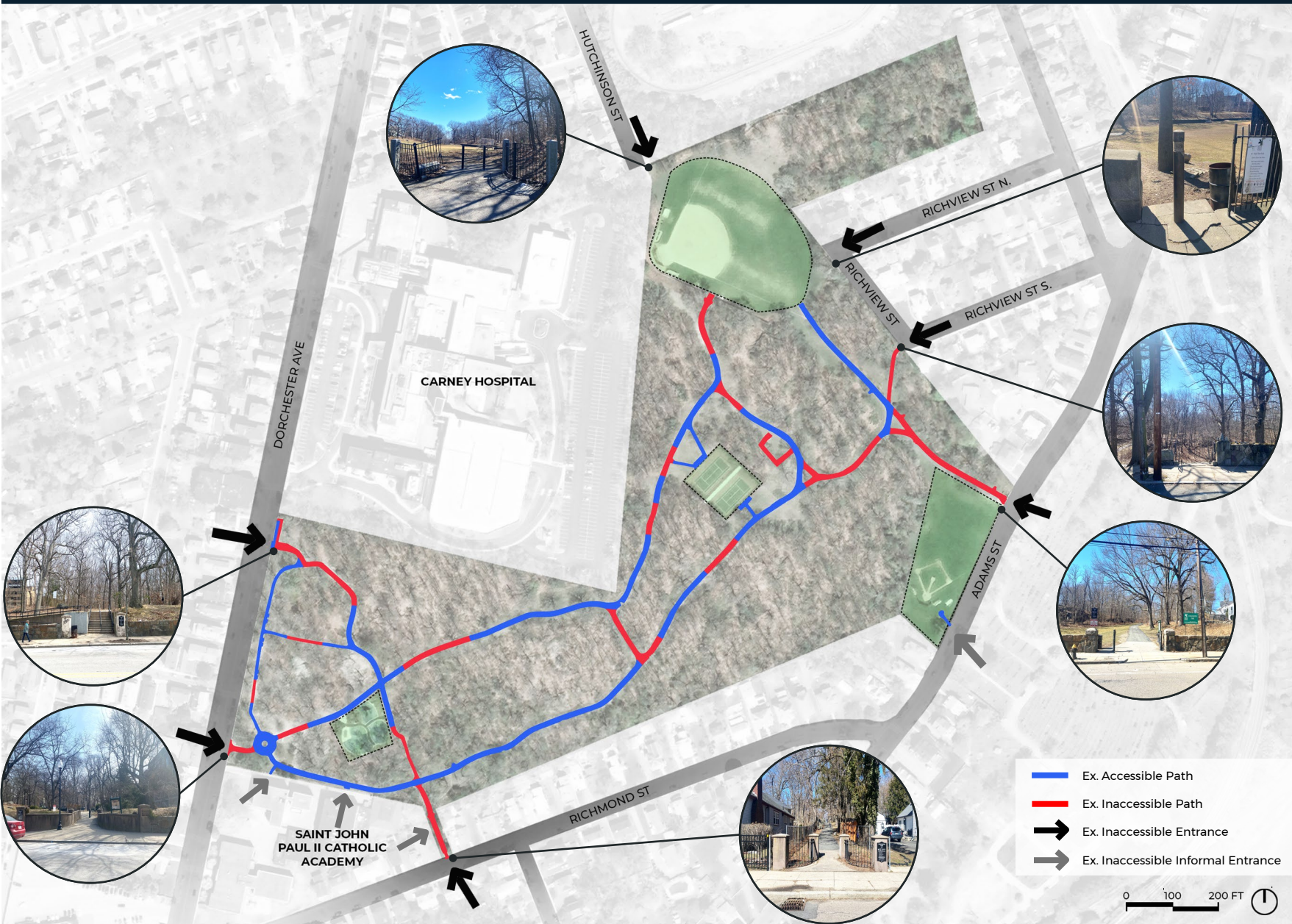
EXISTING CONDITIONS | PROGRAM



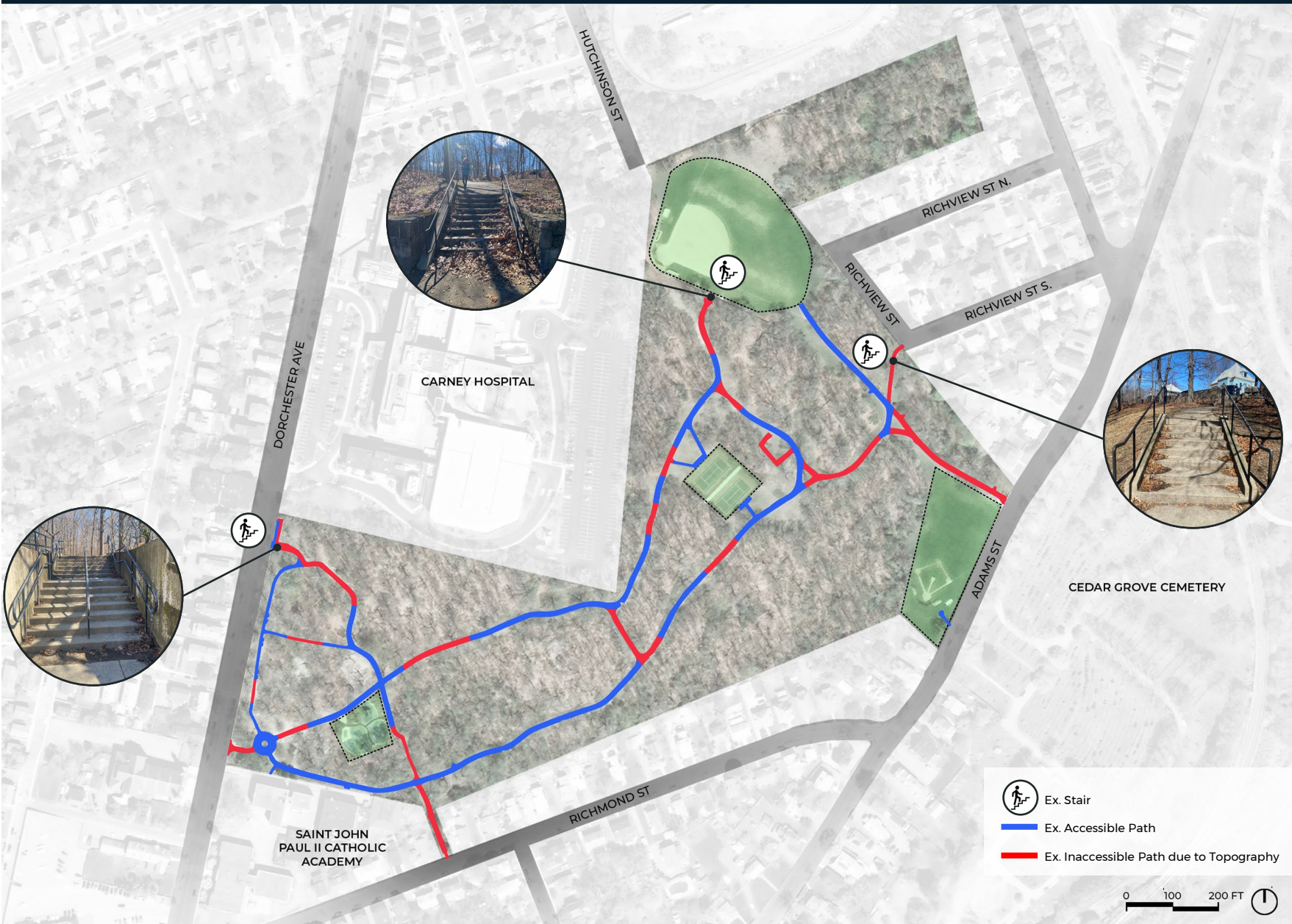
EXISTING CONDITIONS | MATERIALS



EXISTING CONDITIONS | ACCESSIBILITY



EXISTING CONDITIONS | STAIRS



PROPOSED PATHWAY IMPROVEMENTS

A photograph of a forest path during autumn. The path is covered in fallen brown leaves and leads into a wooded area. On the left side of the path, there is a large, smooth, grey rock. In the distance, a person wearing a yellow shirt and dark pants is walking away from the camera. The trees are mostly bare, with some green and yellow leaves still visible. The sky is a clear, bright blue. The text "PROPOSED PATHWAY IMPROVEMENTS" is overlaid in white, bold, sans-serif font across the middle of the image.

PROPOSED PATHWAY IMPROVEMENTS | MATERIALS



PROPOSED PATHWAY IMPROVEMENTS | MEMORIAL TREE



Princeton American Elm

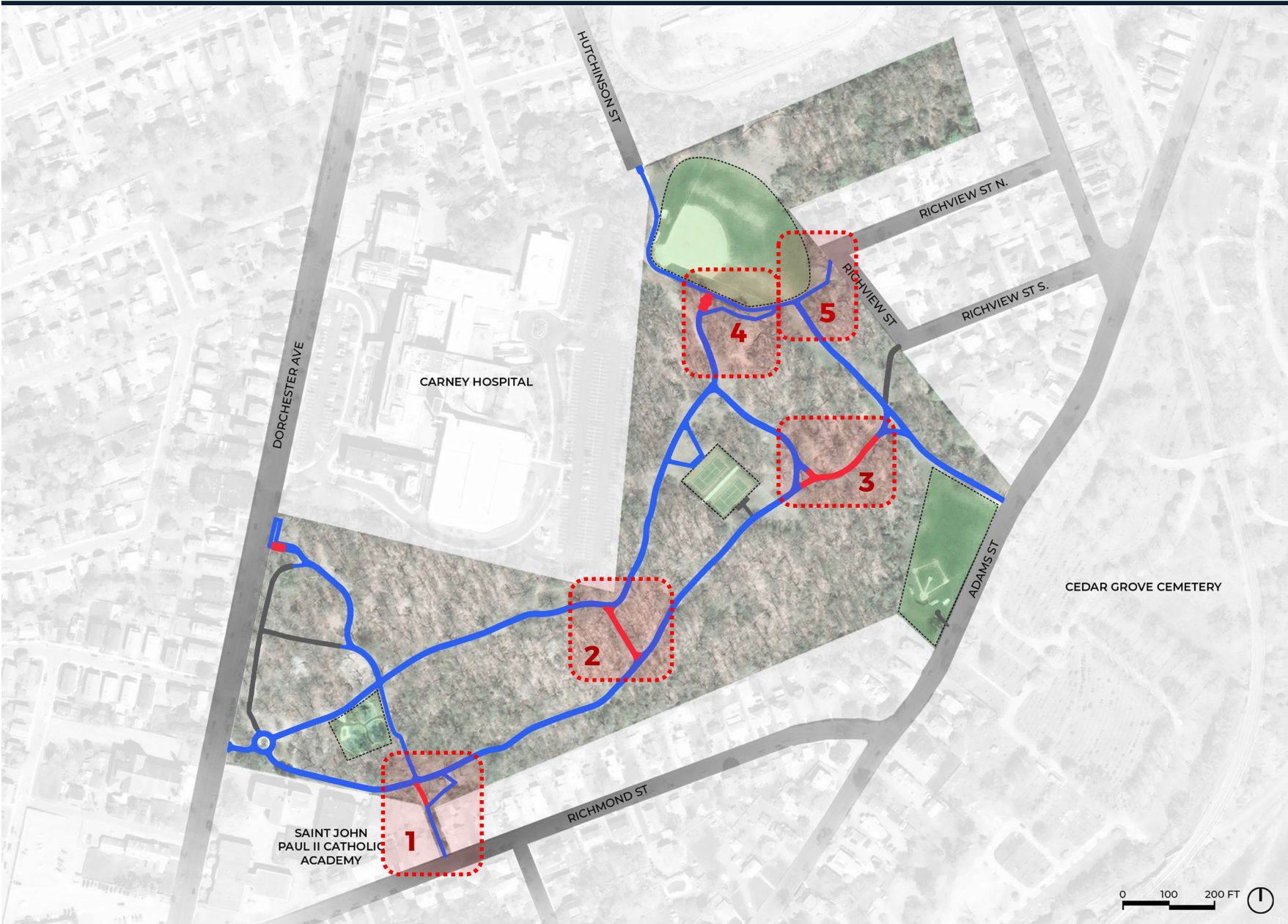


Memorial Sign

PROPOSED PATHWAY IMPROVEMENTS | ACCESSIBILITY



PROPOSED PATHWAY IMPROVEMENTS | ACCESSIBILITY KEY PLAN



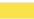


PROPOSED PATHWAY IMPROVEMENTS | AREA 1

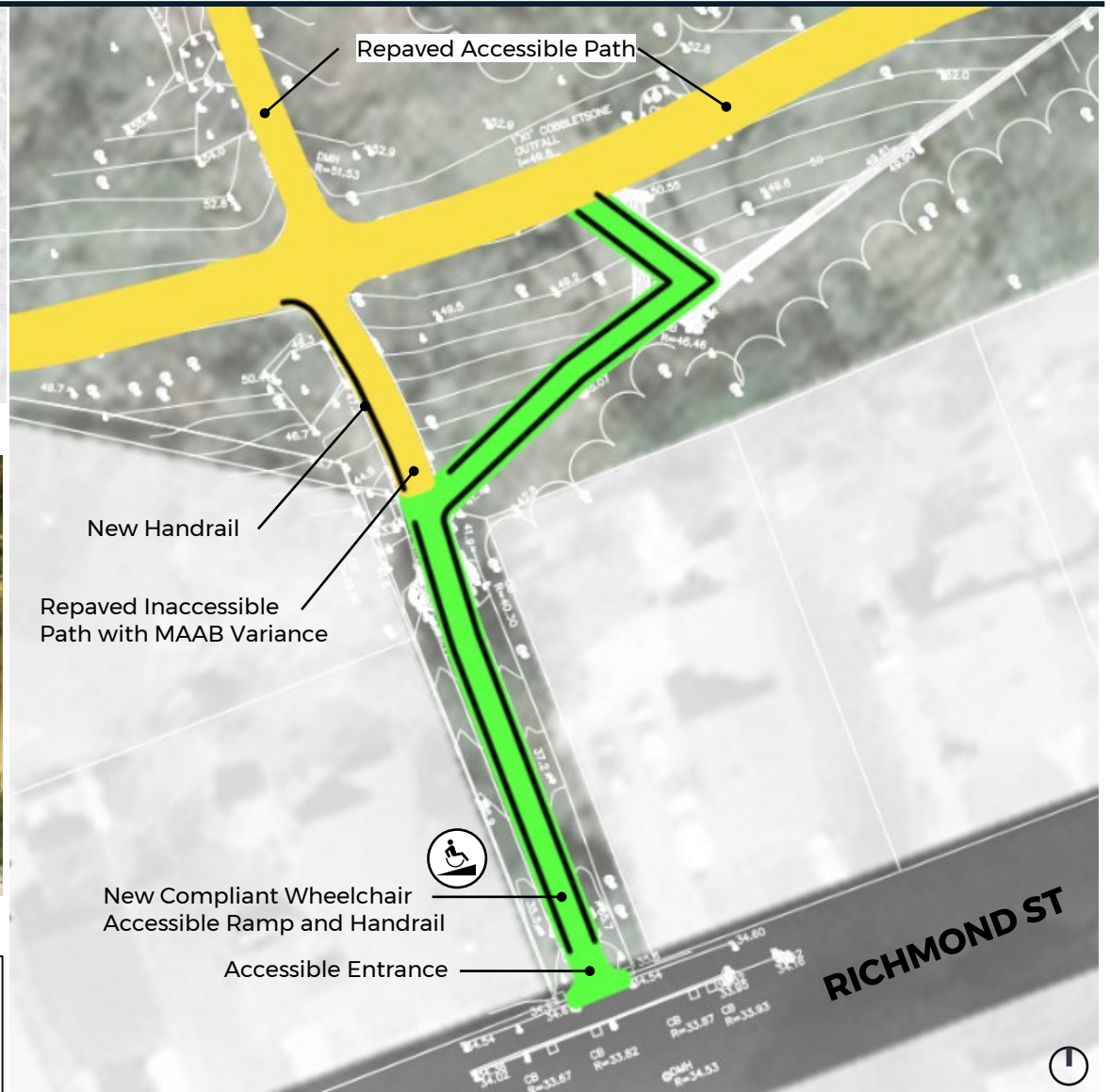


ACCESSIBILITY KEY PLAN



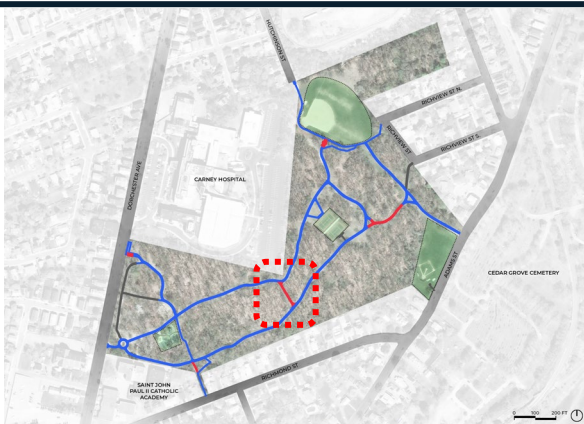
RAMP & HANDRAIL PRECEDENT IMAGE

Legend	
	Repaved Accessible Path
	New Complaint Wheelchair Accessible Ramp
	New Handrail



ENLARGEMENT PLAN - 1



PROPOSED PATHWAY IMPROVEMENTS | AREA 2



ACCESSIBILITY KEY PLAN

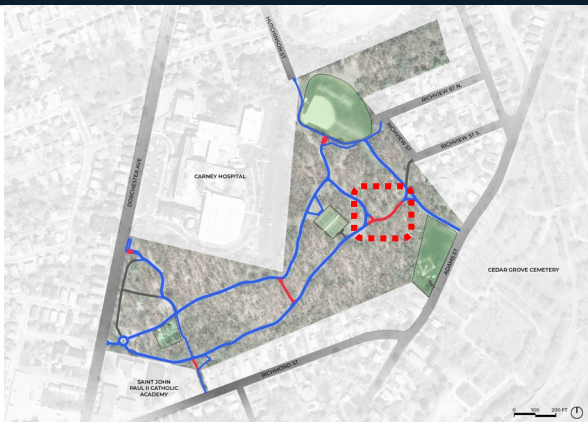


Legend

-  Repaved Accessible Path
-  New Handrail

ENLARGEMENT PLAN - 2

PROPOSED PATHWAY IMPROVEMENTS | AREA 3





ACCESSIBILITY KEY PLAN

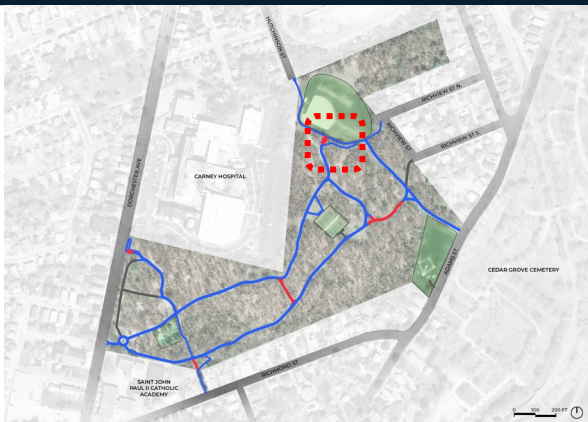


ENLARGEMENT PLAN - 3

Legend

-  Repaired Accessible Path
-  New Handrail

PROPOSED PATHWAY IMPROVEMENTS | AREA 4



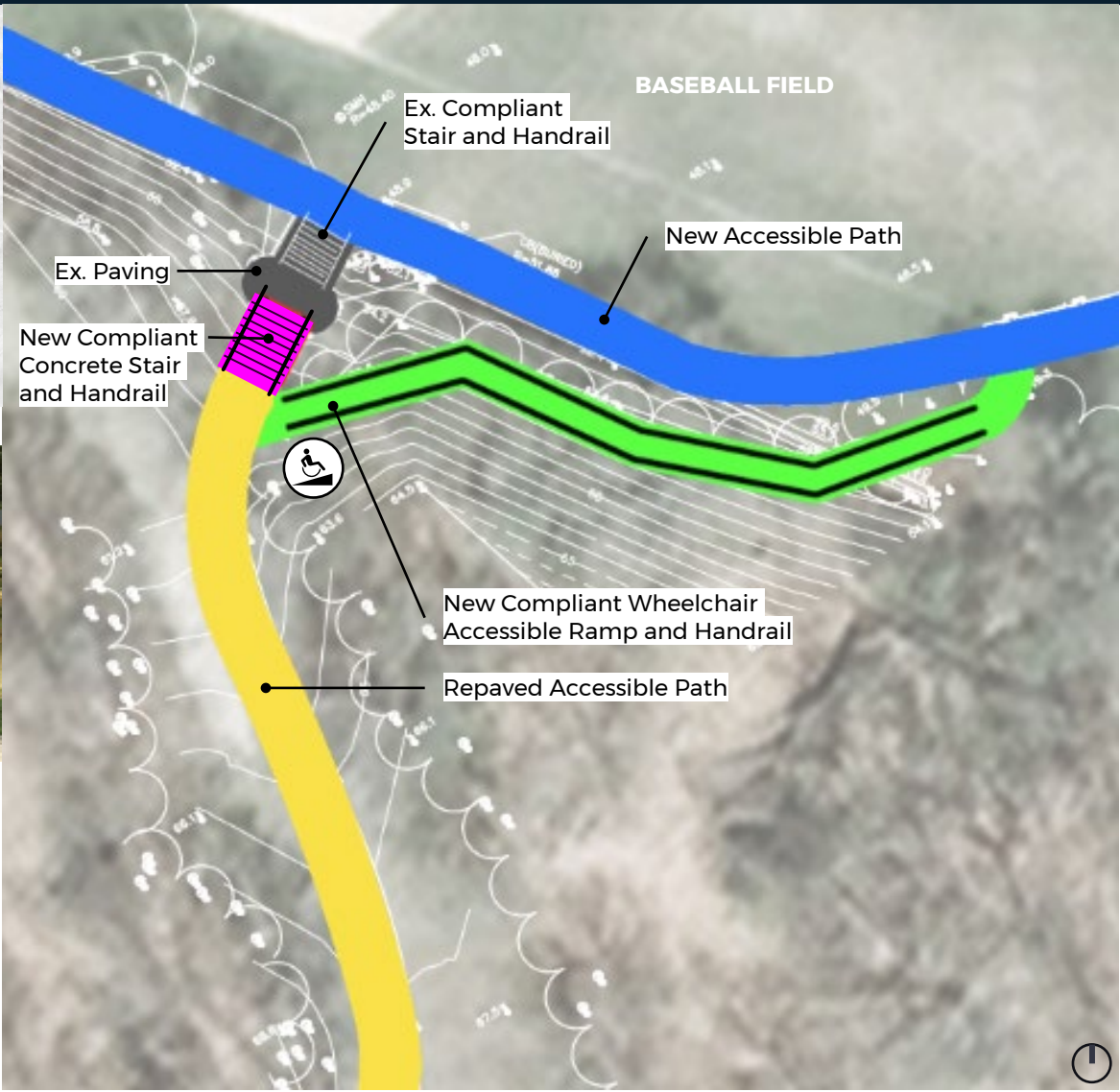
ACCESSIBILITY KEY PLAN



STAIR, RAMP & HANDRAIL PRECEDENT IMAGE

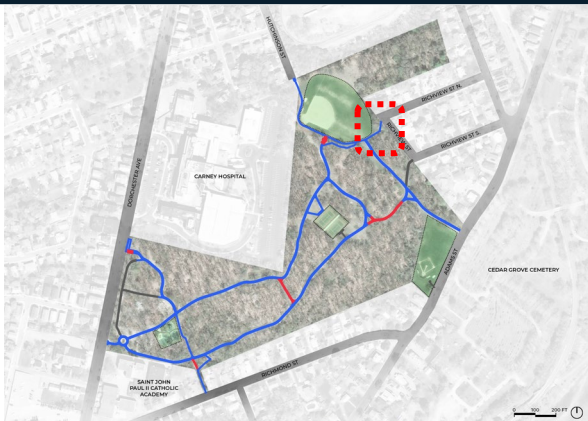
Legend

- Repaved Accessible Path
- New Accessible Path
- New Compliant Wheelchair Accessible Ramp
- New Concrete Stair
- Ex. Path or Stair
- New Handrail

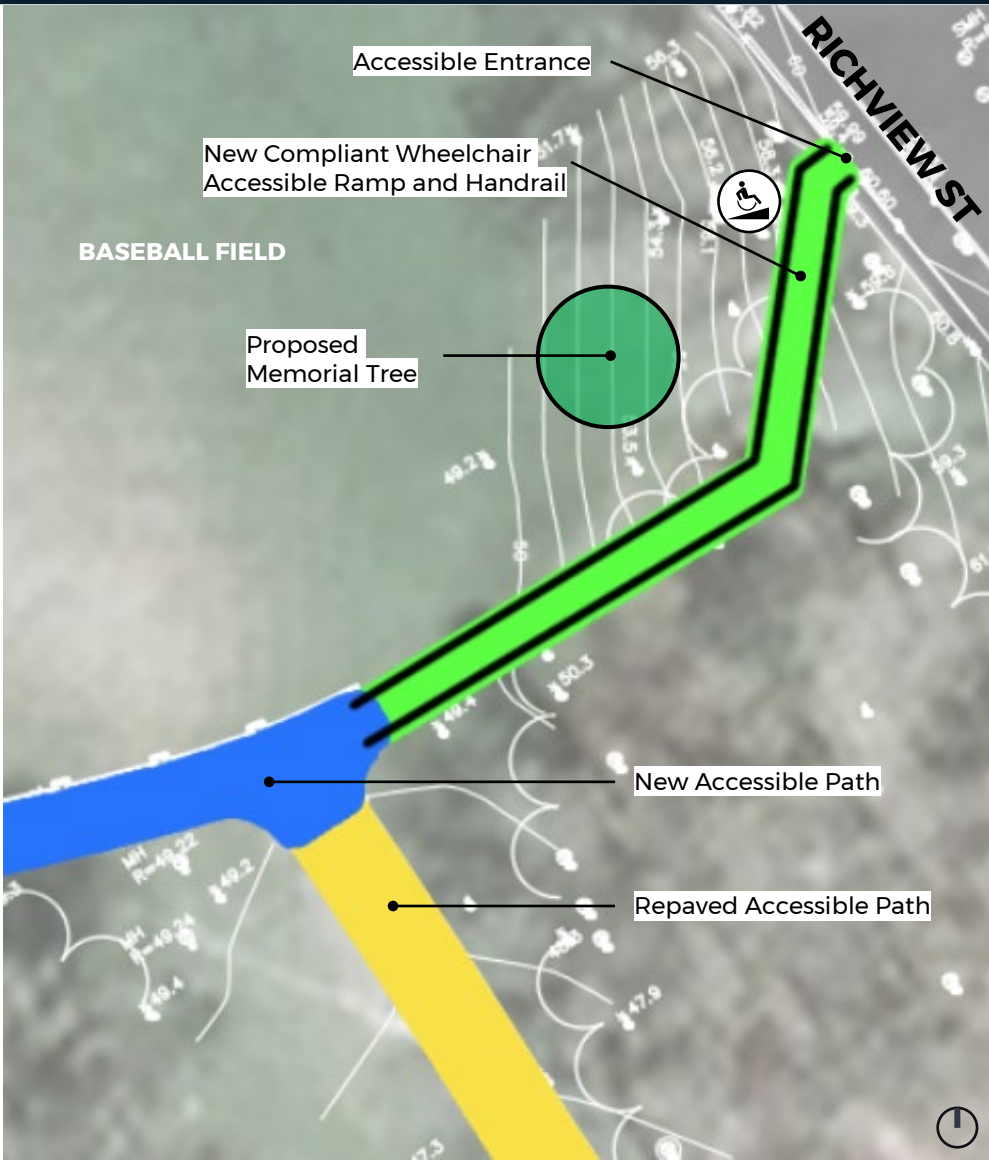


ENLARGEMENT PLAN - 4

PROPOSED PATHWAY IMPROVEMENTS | AREA 5



ACCESSIBILITY KEY PLAN



ENLARGEMENT PLAN - 5

Legend

- Repaved Accessible Path
- New Accessible Path
- New Complaint Wheelchair Accessible Ramp
- New Handrail



LISTENING & DISCUSSION

Help us build great parks.
Let us know what matters to you.

THANK YOU!



See the project website for future updates.

<https://www.boston.gov/departments/parks-and-recreation/improvements-dorchester-park-pathways>



For questions, maintenance requests or concerns regarding any of our parks contact 311 or project manager Nelle Ward
nelle.ward@boston.gov
617-961-3035



May 28, 2024
Boston Parks and Recreation

