



Community Meeting #3
Improvements to
DORCHESTER PARK PATHWAYS



Zoom Interpretation Services



English: For interpretation in [____],

1. Go to the horizontal control bar at the bottom of your screen. Click on “Interpretation.”
2. Then click on the language that you would like to hear.
3. You are now accessing this meeting in [____]

Vietnamese: Cho thông dịch Tiếng Việt

1. Tìm thanh điều khiển ngang phía dưới màn hình của bạn. Bấm vào từ: "Interpretation"
2. Sau đó chọn lựa ngôn ngữ mà bạn cần lắng nghe.
3. Hiện tại bạn đang tham gia buổi họp bằng Tiếng Việt

Cabo Verdean Creole: Gossim bu ta entra na reuniao na kriolu,

1. Bai na barra de controlo horizontal na parte inferior di computador bu kalka na "Interpretation".
2. Depos kalka na idioma qui bu kre ovi.
3. Agora djabu sta ta entra na reuniaun em creole.

Haitian Creole: Pou entèpretasyon Kreyòl ayisyen,

1. Ale nan kontwòl ba nan pati anba ekran an epi Klike sou "Interpretation"
2. Apre sa, klike sou lang ke ou ta renmen tande a.
3. Kounye a ou gen aksè a reyinyon an Kreyòl ayisyen

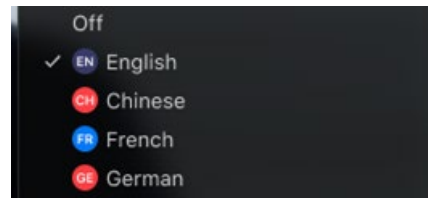
Spanish: Para traducción en Español,

1. Vaya a la parte baja de la pantalla, en la barra horizontal, y presione la tecla “Interpretation”.
2. Luego seleccione el idioma que desea escuchar.
3. Después de seleccionar, usted entrará a la reunión en el idioma “Español”.

1.



2.



3.





Community Meeting #3
Improvements to
DORCHESTER PARK PATHWAYS



May 28, 2024
Boston Parks and Recreation



MEETING RECORDING



The Boston Parks and Recreation Department will be recording the meeting and posting to our project webpage for those who are unable to attend the Zoom meeting live.

It is possible that participants may also be recording the meeting with their phones cameras or other devices. If you do not wish to be recorded during this meeting, please keep your microphone muted and camera off.

*Please share with your neighbors and friends,
[**boston.gov/dorchester-park**](https://boston.gov/dorchester-park)*

VIRTUAL MEETING ETIQUETTE

We want to ensure this conversation is a pleasant experience for all and that all community members/stakeholders are comfortable sharing their comments, questions and feedback.

Please be respectful and mindful of each other's time when asking questions/ providing comments, so that all attendees are able to participate in the meeting.

Keep questions/ comments project-specific and not personal to yield solution-driven discussion.

Please wait until all attendees have had the opportunity to ask a question/ provide a comment before providing additional questions/ comments.

*You can always set up a conversation with **Nelle Ward**, nelle.ward@boston.gov, to further discuss the project or process.*

ZOOM TIPS

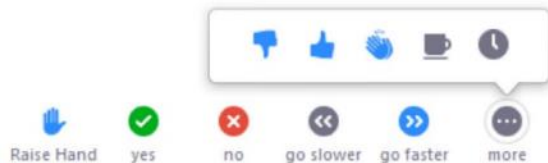
Here is how you can participate during the question and answer part of the presentation.

DURING THE PRESENTATION:



VIA WEB:

Turn video on / off.



To use these non-verbal options click on participants (bottom of screen); these options will pop up in side bar.

DURING THE Q&A:



JOINING VIA PHONE?

Use *9 to raise hand to ask for audio / video permission to ask questions or provide comments.



VIA WEB:

Chat to ask questions / comments or provide responses to poll questions



Raise hand to ask for audio / video permission to ask questions or provide comments.

PROJECT OVERVIEW

A photograph of a dirt path in a forest during autumn. The path is covered in fallen brown leaves and leads into the distance. On the left side of the path, there is a large, smooth, grey rock. The trees are mostly bare or have sparse, yellowing leaves. A person in a yellow shirt is visible in the distance on the path. The sky is a clear, bright blue.

AGENDA

1

PROJECT TEAM INTRODUCTION

2

PROJECT INFORMATION

3

EXISTING CONDITIONS | SITE ANALYSIS

4

PROPOSED PATHWAY IMPROVEMENTS

5

LISTENING & DISCUSSION

6

NEXT STEPS

PROJECT TEAM

NELLE WARD

Project Manager

nelle.ward@boston.gov or 617-961-3035

THAMMY PIERRE-LOUIS

Community Outreach Coordinator

thammy.pierrelouis@boston.gov or 617-635-4863

RAY DUNETZ

Principal, Ray Dunetz Landscape Architecture, Inc.

rd@raydunetz.com or 617-524-6265

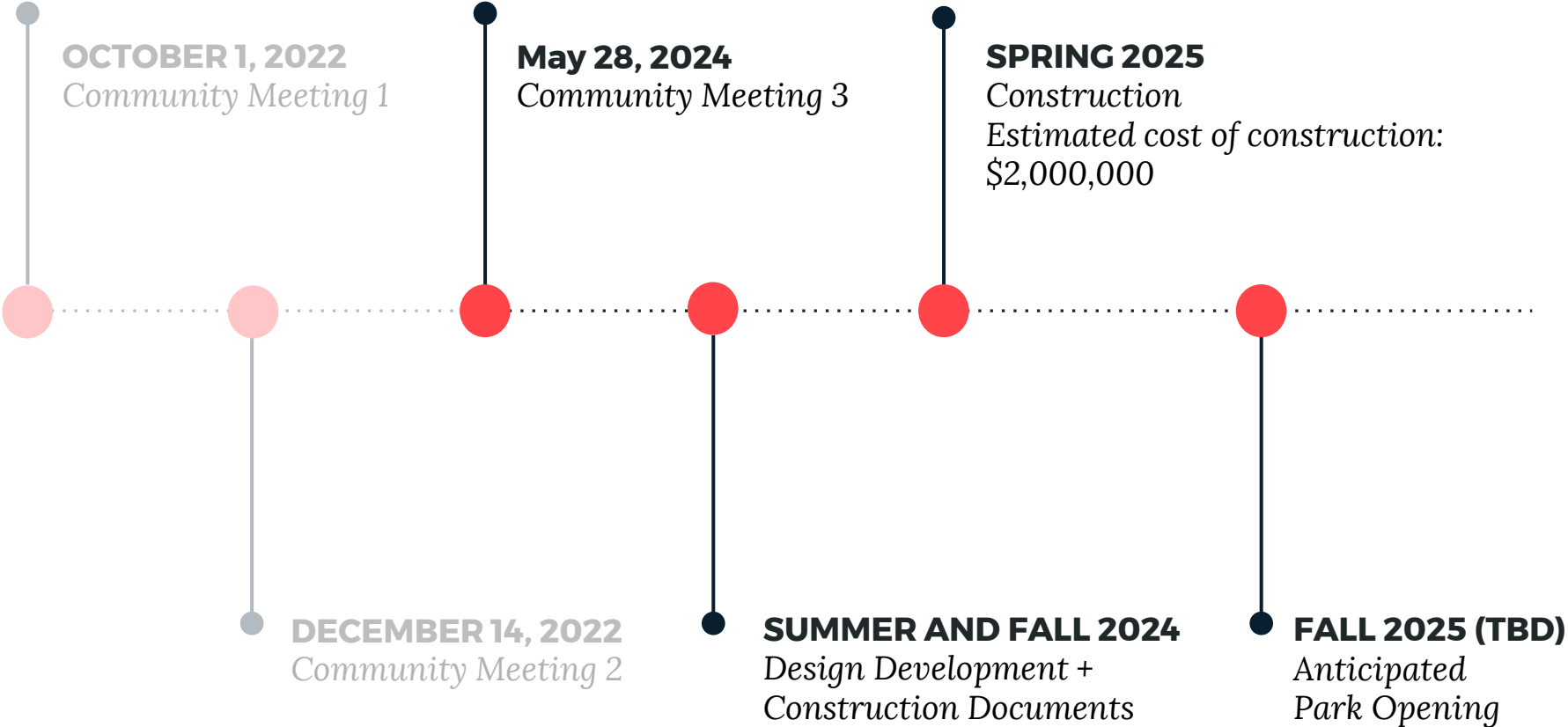
ROSS COCHRAN

Office of Neighborhood Services

ross.cochran@boston.gov or 617-635-4819



PROJECT SCHEDULE & FUNDING





City of Boston
Priorities

Safety Guidelines+
Regulatory
Guidelines

**PARK
DESIGN**

Parks + Recreation
Goals

Community
Input

CITY OF BOSTON PRIORITIES

- **Family Friendly**
- **Green and Growing**
- **Health and Safe**
- **Delivering Exceptional City Services**
- **Closing the Racial Wealth Gap**



PARK & RECREATION GOALS

- **Accessible and available to all**
- **Diverse, balanced, and efficient mix of uses**
- **Meaningful and inclusive community engagement**
- **Adaptive and resilient landscapes**
- **Promote connections**



SCOPE OF WORK

- **Repave pathways in Dorchester Park to improve conditions and accessibility**
- **Assess and repair entrance and stairways for accessibility**



SITE ANALYSIS

A photograph of a dirt path in a forest during autumn. The path is covered in fallen leaves and leads through a dense stand of trees with some autumn-colored foliage. A large rock is visible on the left side of the path. The text "SITE ANALYSIS" is overlaid in white on the left side of the image.

SITE CONTEXT

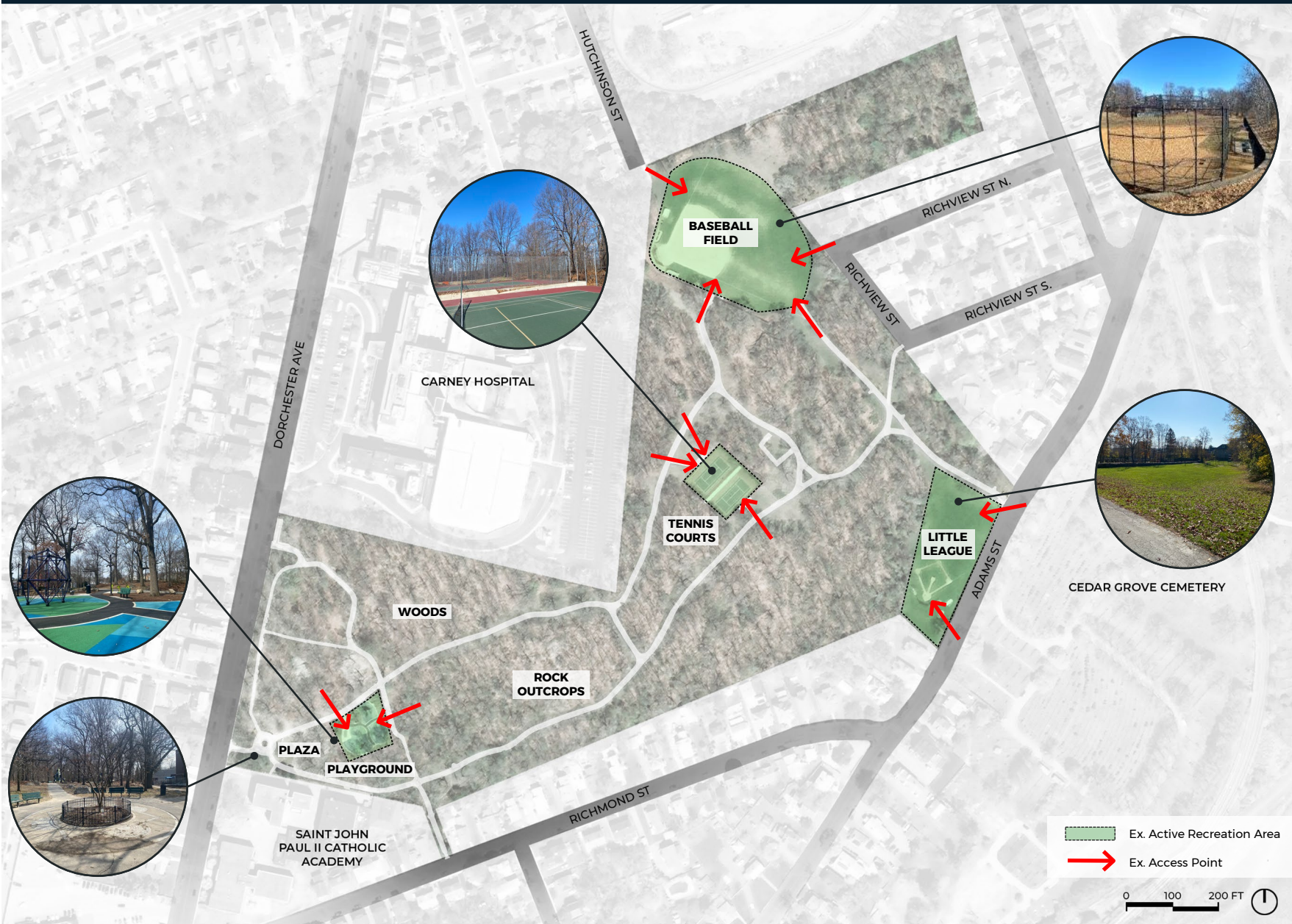


- MBTA - Mattapan Trolley
- - - Neighborhood Boundary

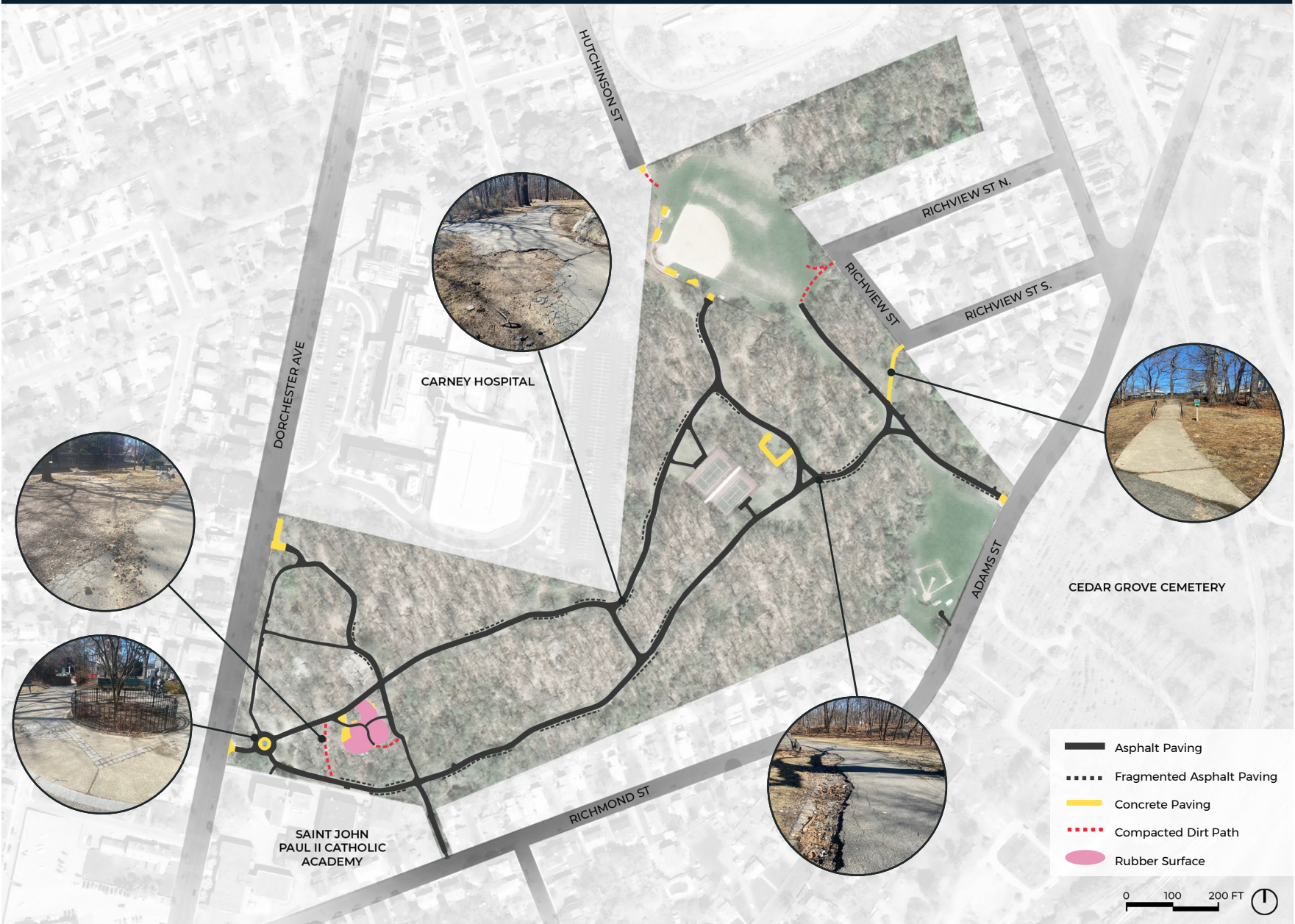
HISTORIC DEVELOPMENT



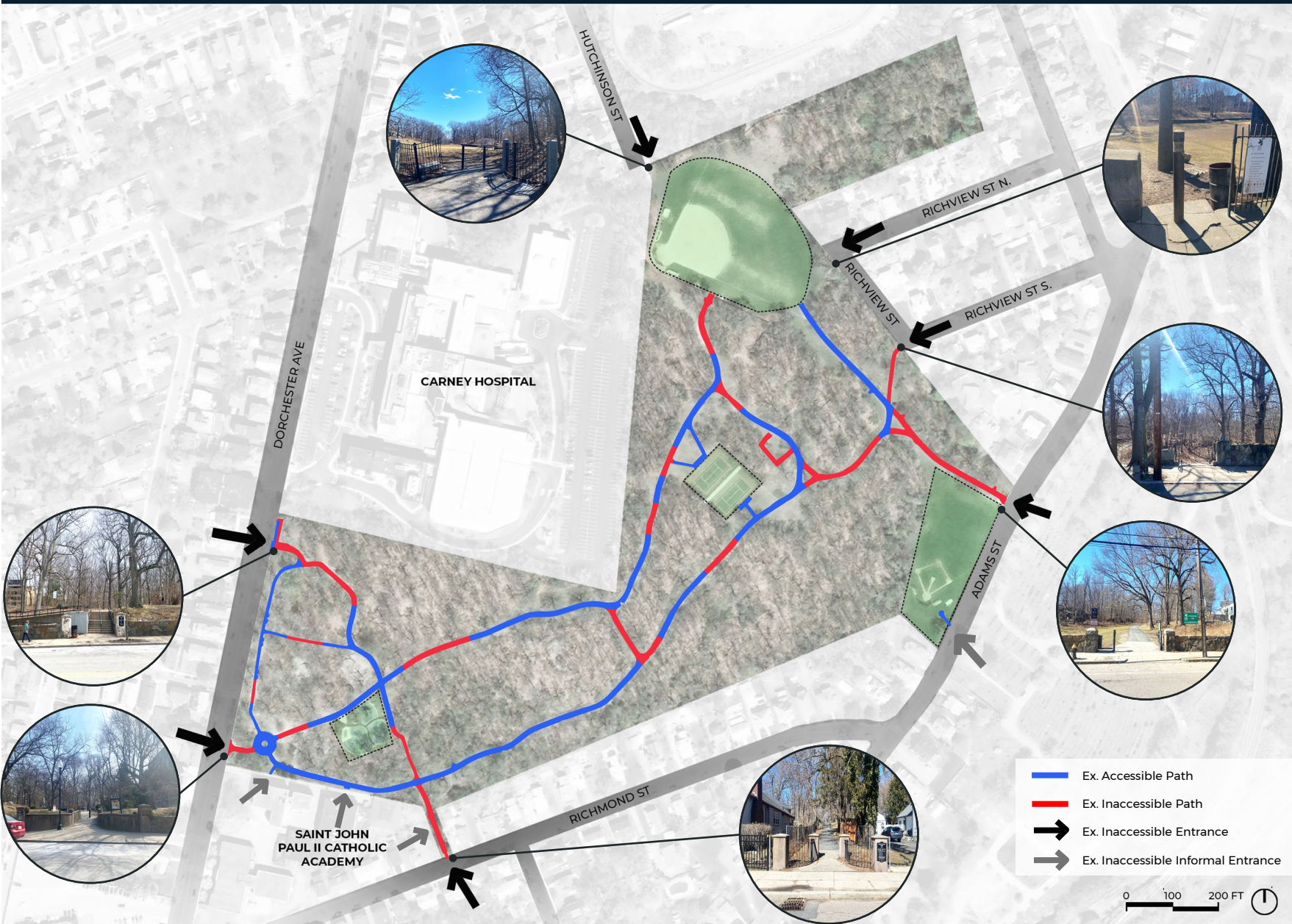
EXISTING CONDITIONS | PROGRAM



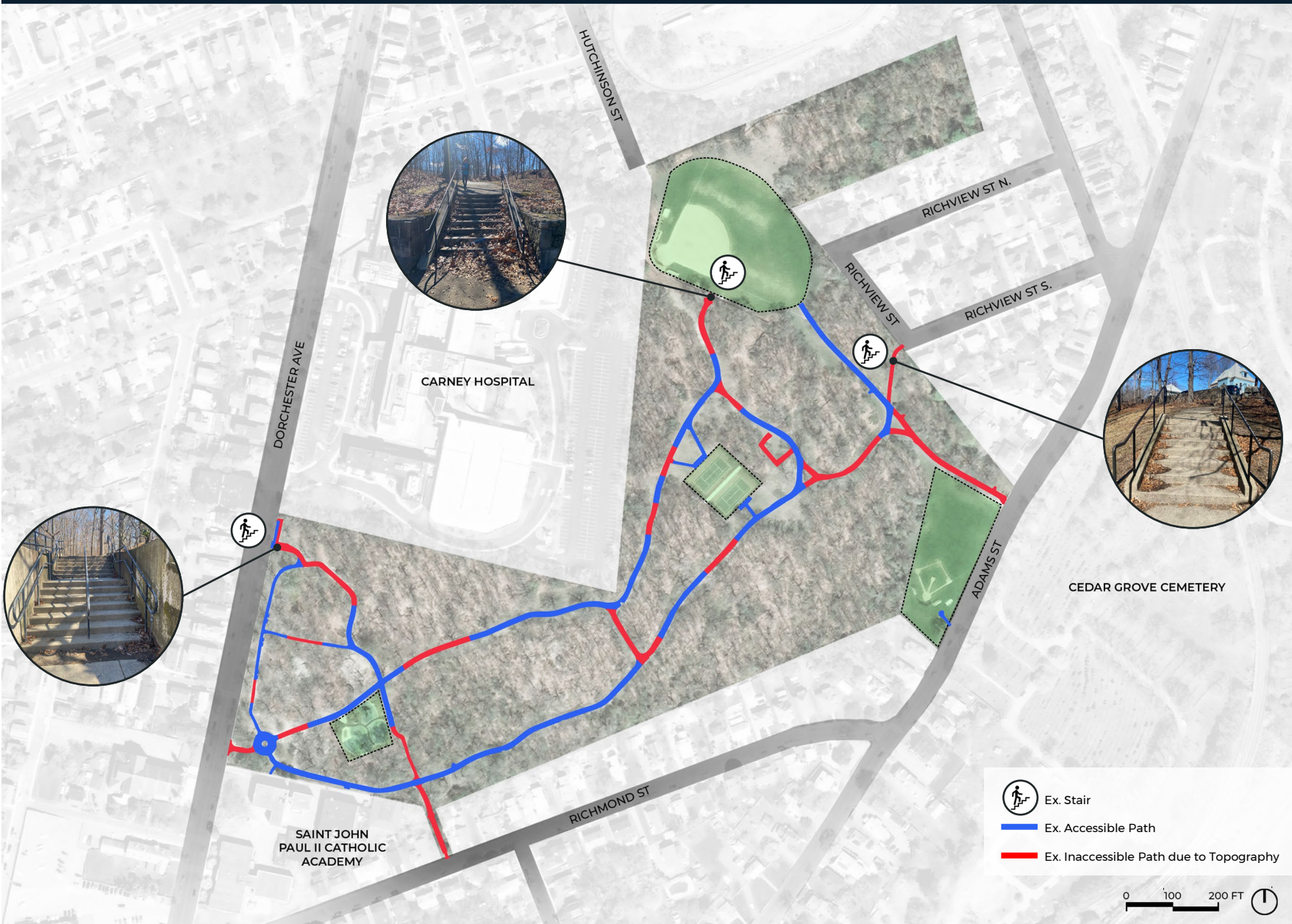
EXISTING CONDITIONS | MATERIALS



EXISTING CONDITIONS | ACCESSIBILITY



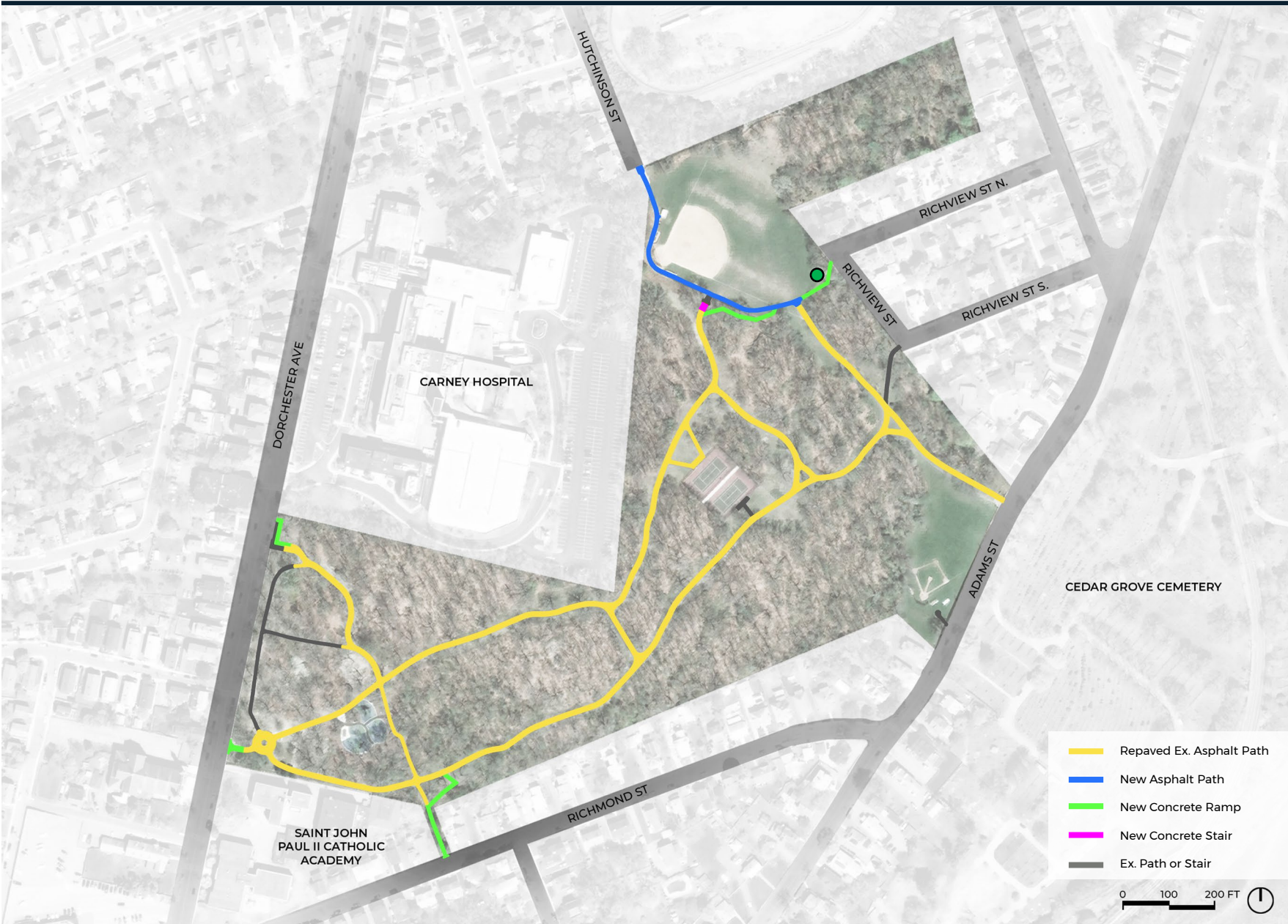
EXISTING CONDITIONS | STAIRS



PROPOSED PATHWAY IMPROVEMENTS

A photograph of a forest path during autumn. The path is covered in fallen brown leaves and leads into a wooded area. On the left side of the path, there is a large, smooth, grey rock. In the distance, a person wearing a yellow jacket is walking away from the camera. The trees have sparse foliage, and the sky is a clear, bright blue. The overall scene is serene and natural.

PROPOSED PATHWAY IMPROVEMENTS | MATERIALS



PROPOSED PATHWAY IMPROVEMENTS | MEMORIAL TREE



Princeton American Elm

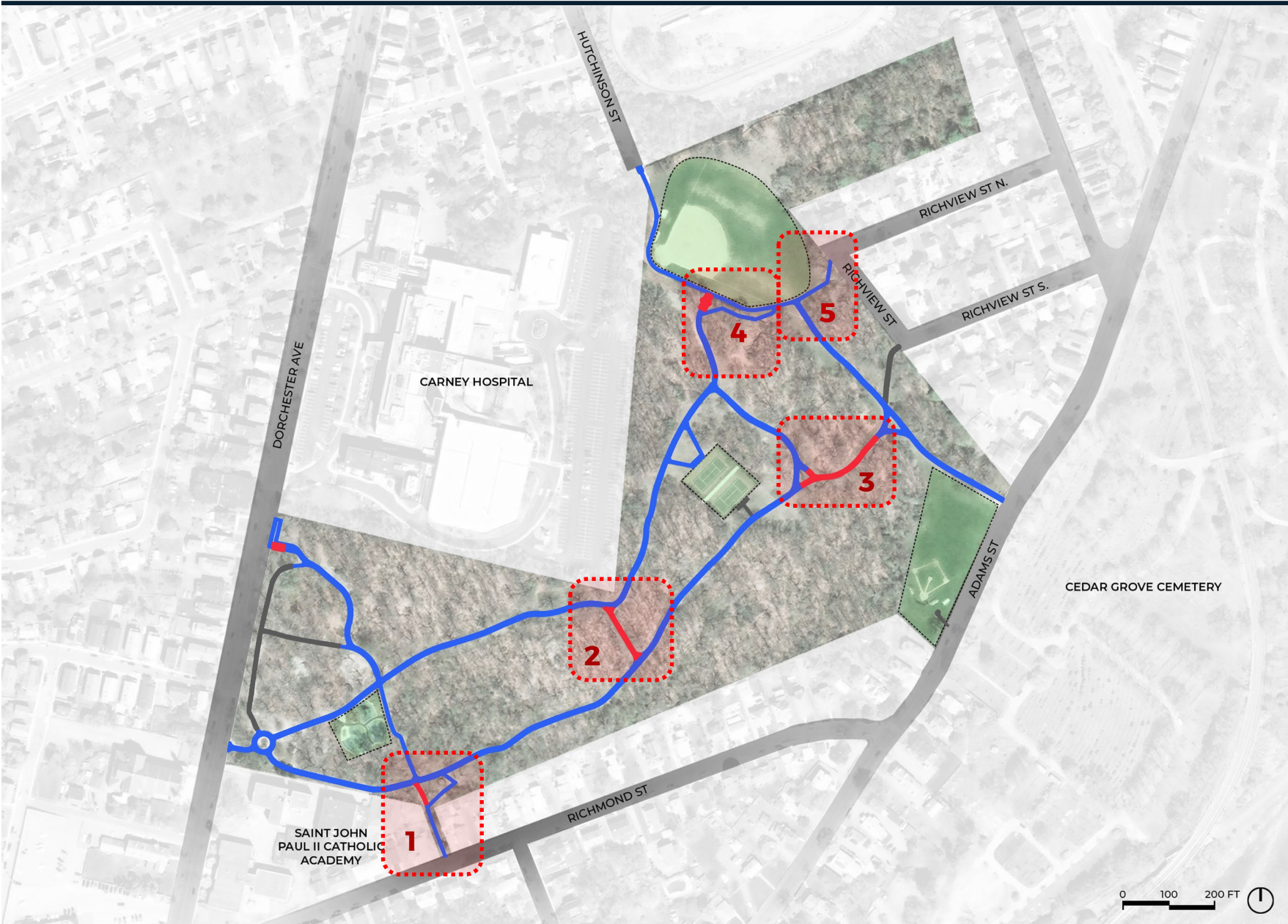


Memorial Sign

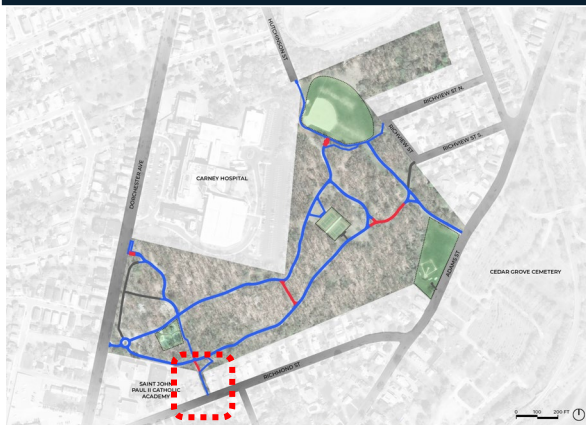
PROPOSED PATHWAY IMPROVEMENTS | ACCESSIBILITY



PROPOSED PATHWAY IMPROVEMENTS | ACCESSIBILITY KEY PLAN






PROPOSED PATHWAY IMPROVEMENTS | AREA 1

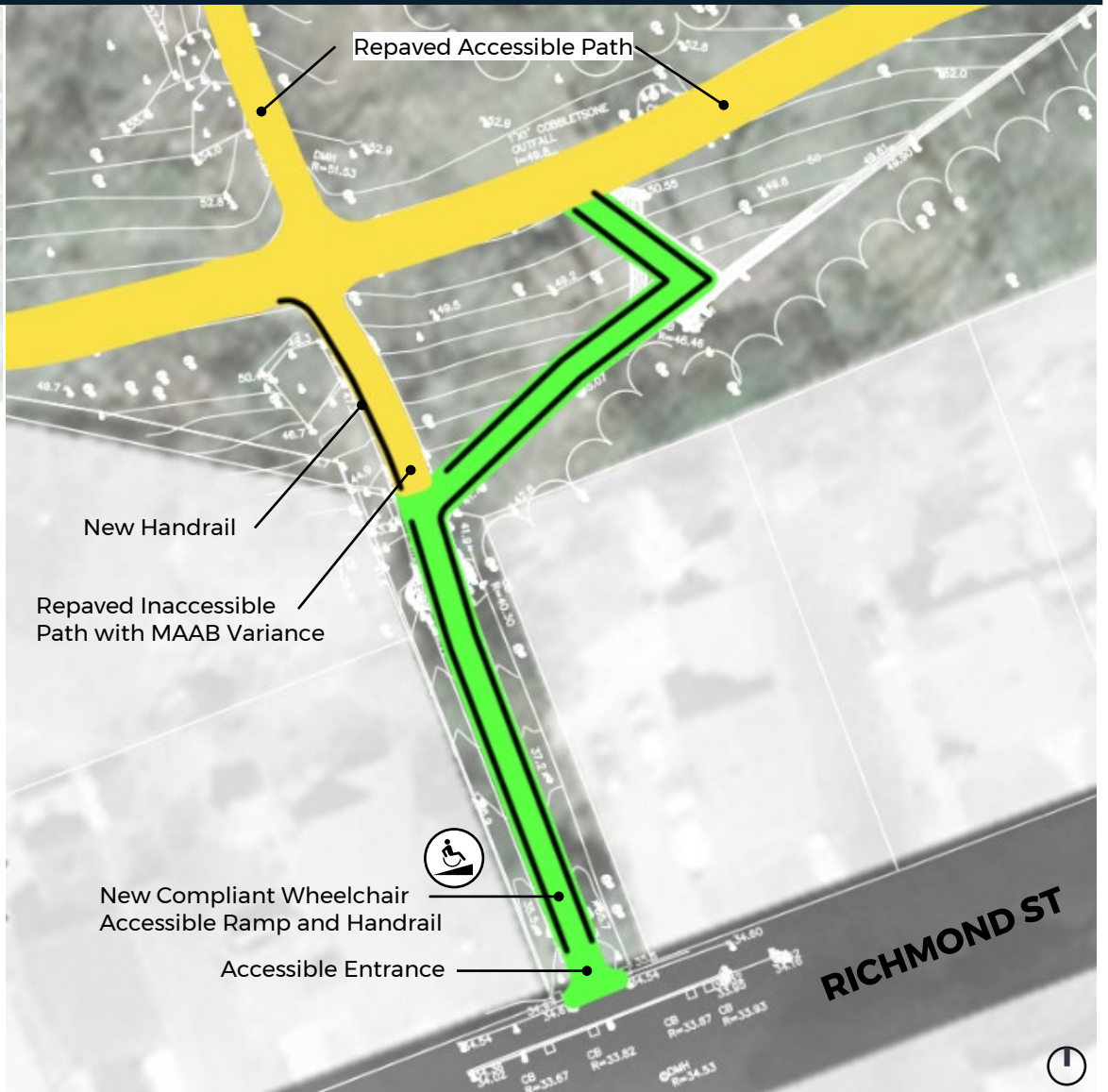


ACCESSIBILITY KEY PLAN



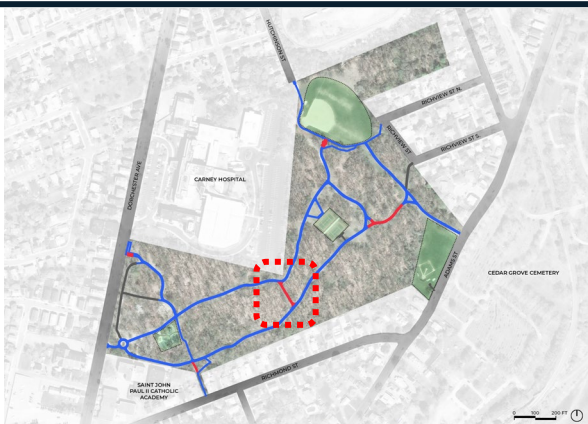
RAMP & HANDRAIL PRECEDENT IMAGE

Legend	
	Repared Accessible Path
	New Complaint Wheelchair Accessible Ramp
	New Handrail



ENLARGEMENT PLAN - 1

PROPOSED PATHWAY IMPROVEMENTS | AREA 2





ACCESSIBILITY KEY PLAN



ENLARGEMENT PLAN - 2

Legend

-  Repaired Accessible Path
-  New Handrail



PROPOSED PATHWAY IMPROVEMENTS | AREA 3



ACCESSIBILITY KEY PLAN

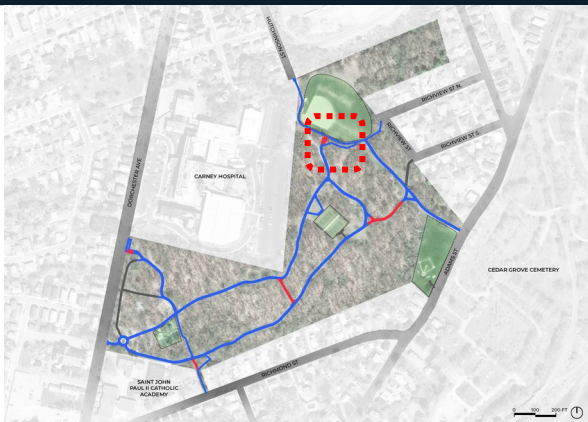


Legend

-  Repaired Accessible Path
-  New Handrail

ENLARGEMENT PLAN - 3

PROPOSED PATHWAY IMPROVEMENTS | AREA 4



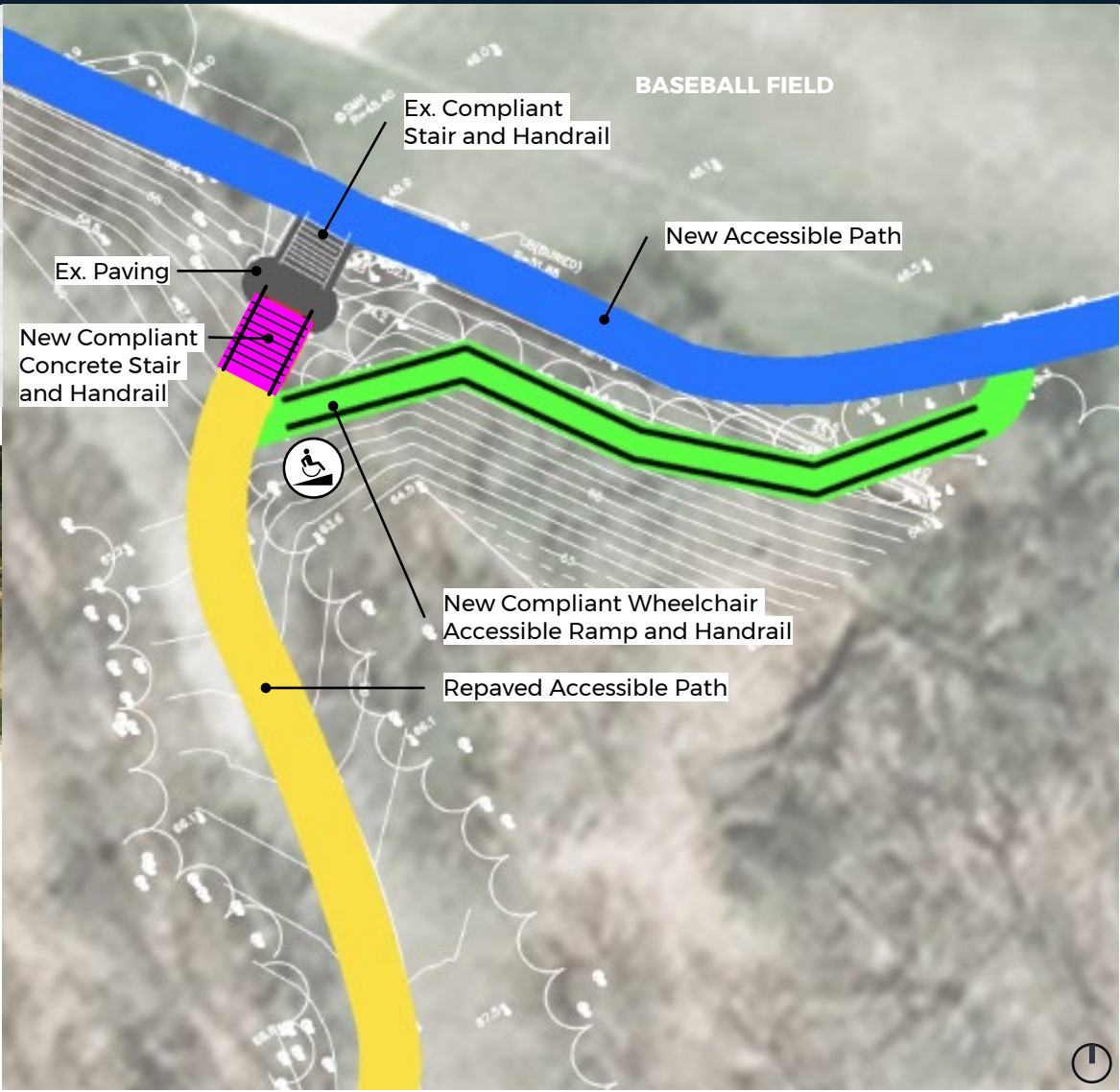
ACCESSIBILITY KEY PLAN



STAIR, RAMP & HANDRAIL PECEDENT IMAGE

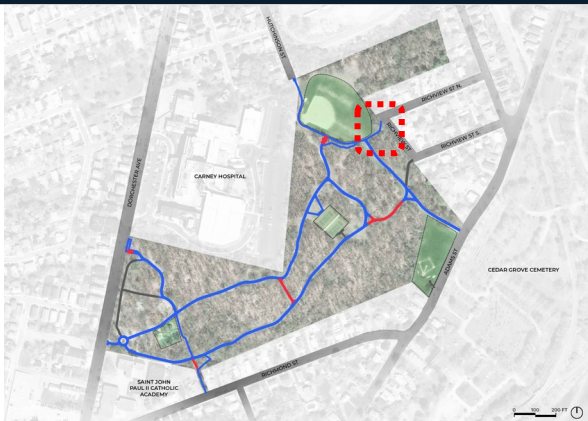
Legend

- Repaved Accessible Path
- New Accessible Path
- New Compliant Wheelchair Accessible Ramp
- New Concrete Stair
- Ex. Path or Stair
- New Handrail

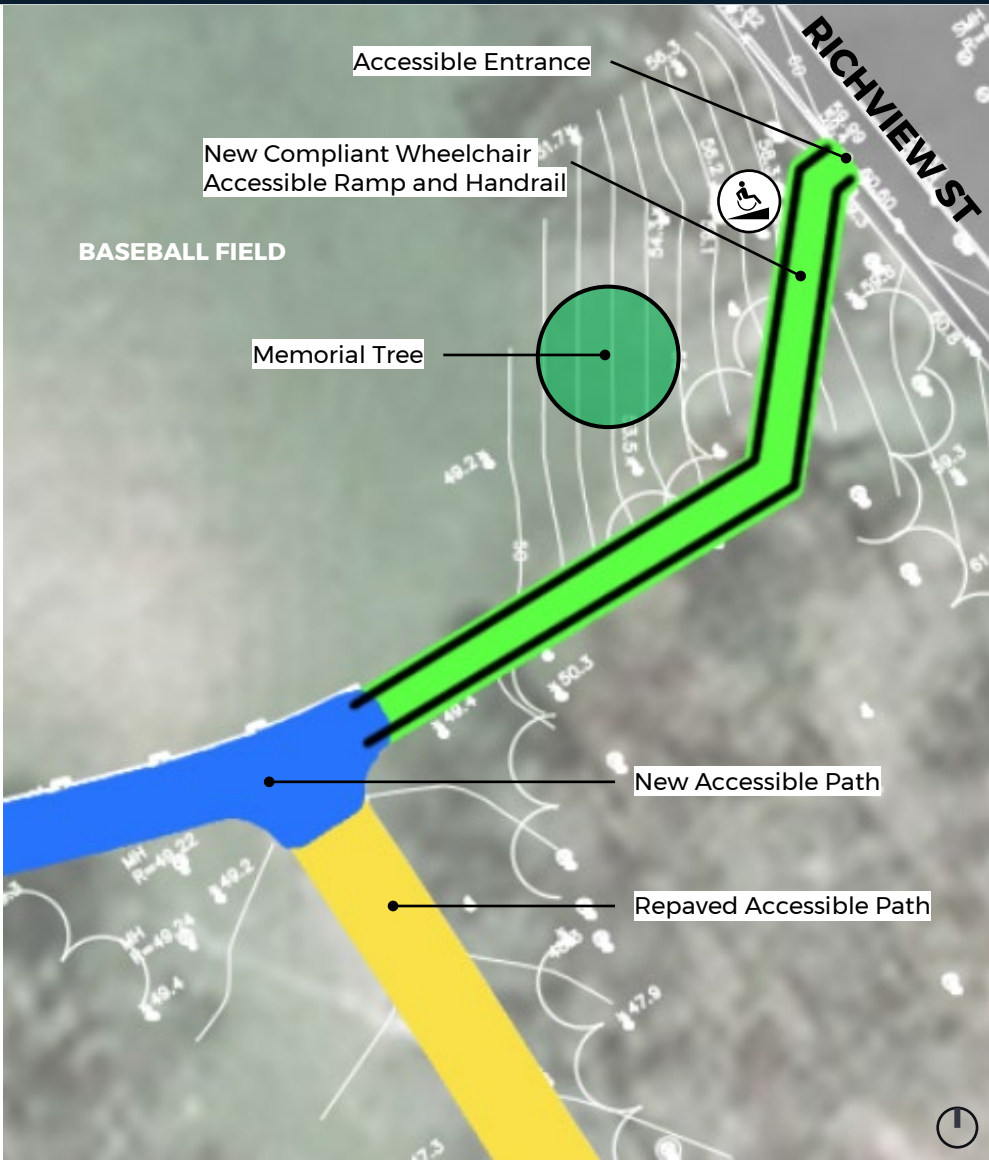


ENLARGEMENT PLAN - 4

PROPOSED PATHWAY IMPROVEMENTS | AREA 5



ACCESSIBILITY KEY PLAN



Legend	
	Repaved Accessible Path
	New Accessible Path
	New Complaint Wheelchair Accessible Ramp
	New Handrail

ENLARGEMENT PLAN - 5



LISTENING & DISCUSSION

Help us build great parks.
Let us know what matters to you.

THANK YOU!



See the project website for future updates.

<https://www.boston.gov/departments/parks-and-recreation/improvements-dorchester-park-pathways>



For questions, maintenance requests or concerns regarding any of our parks contact 311 or project manager Nelle Ward
nelle.ward@boston.gov
617-961-3035



May 28, 2024
Boston Parks and Recreation

