

**J CREW
46
NEW-
BURY**





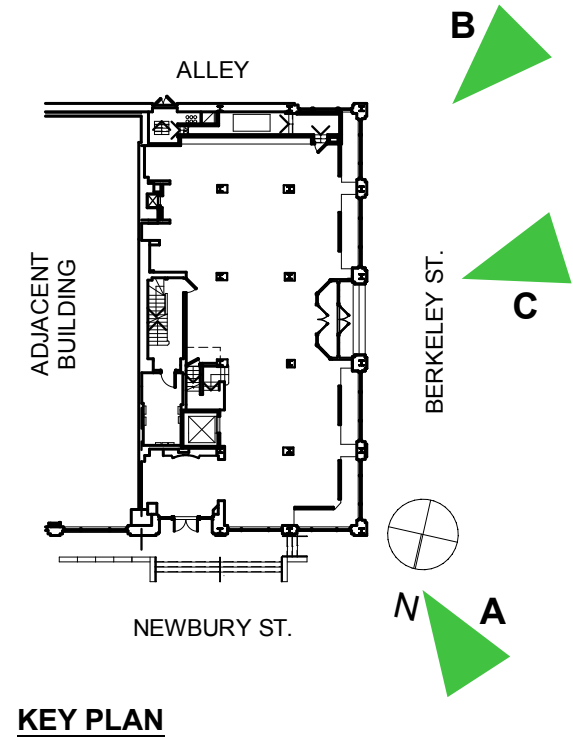
A



B



C



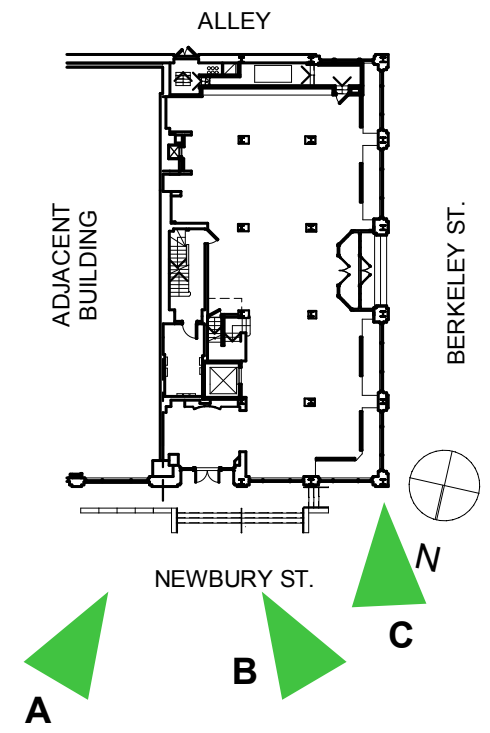


A

C



B



KEY PLAN

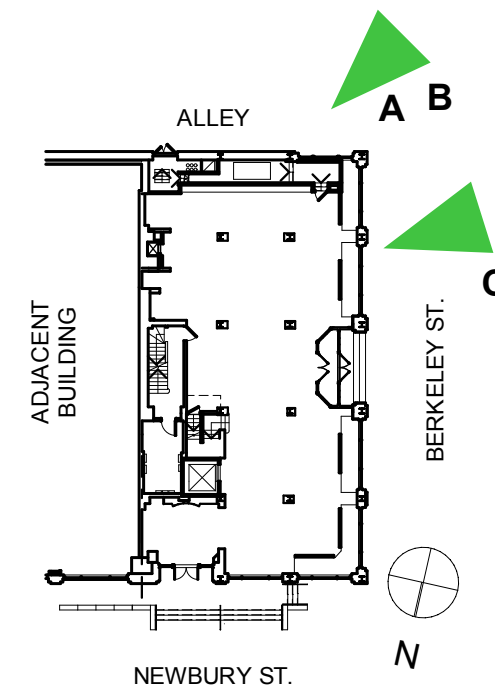


A

C



B



KEY PLAN



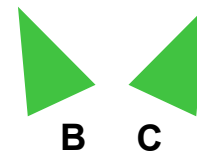
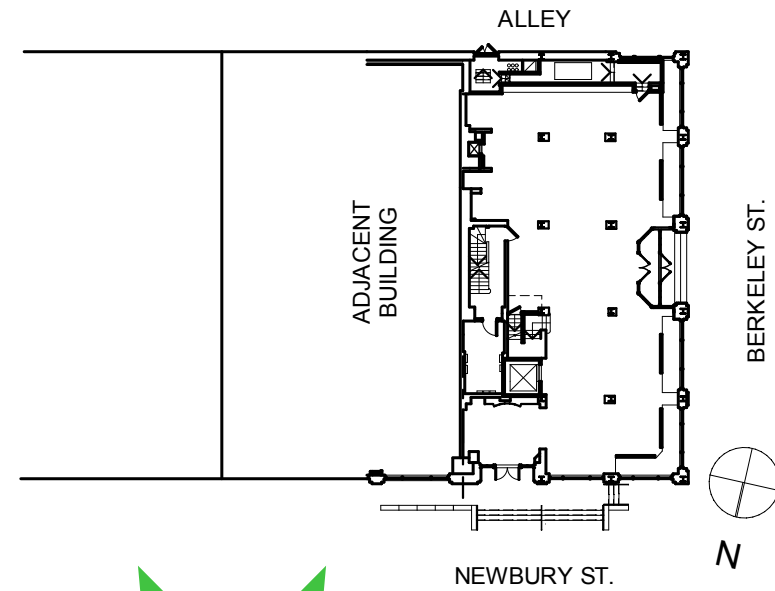
A



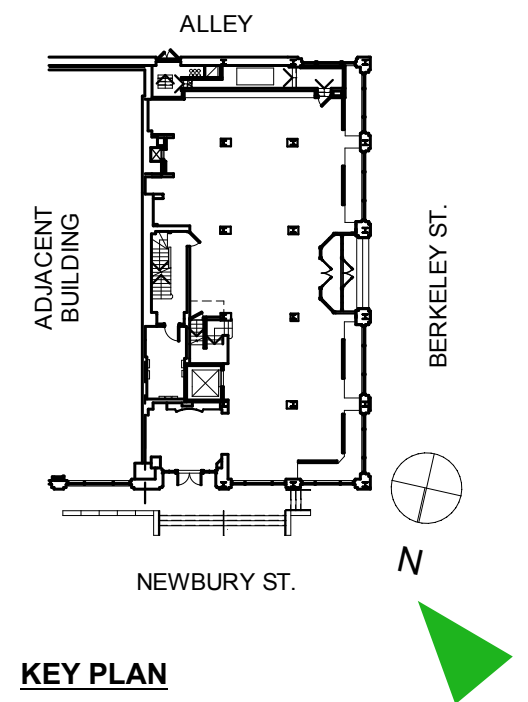
B

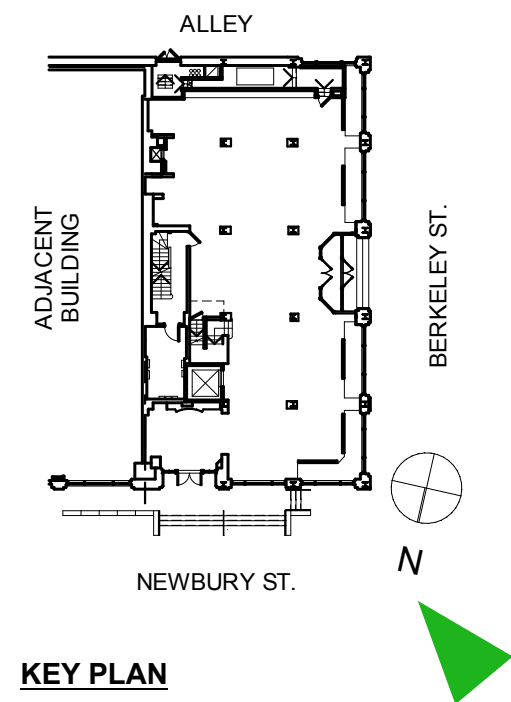


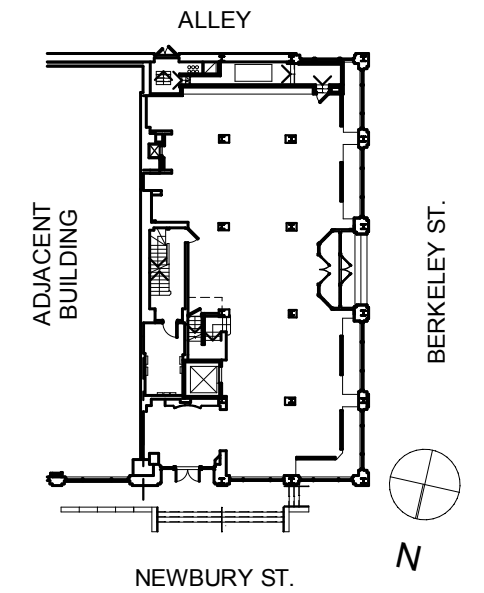
C



KEY PLAN







KEY PLAN

Materials & Finishes



Paint - "Match F&B Slipper Satin" color (PT-14)



KEY PLAN

PT-14
PAINT WOOD CORNICE
FULL LENGTH AROUND
CORNER

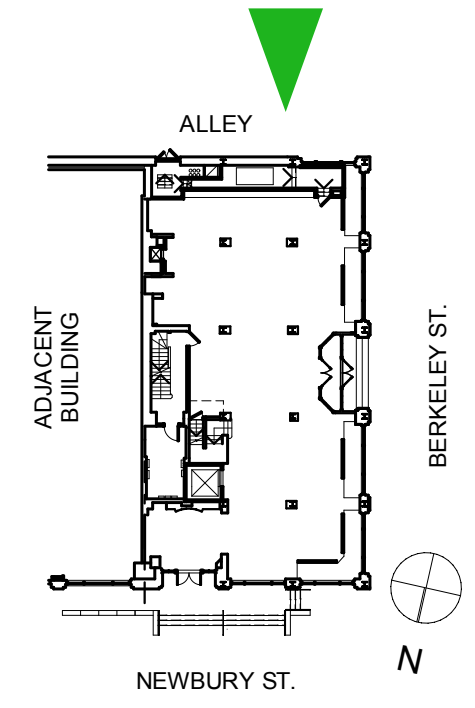
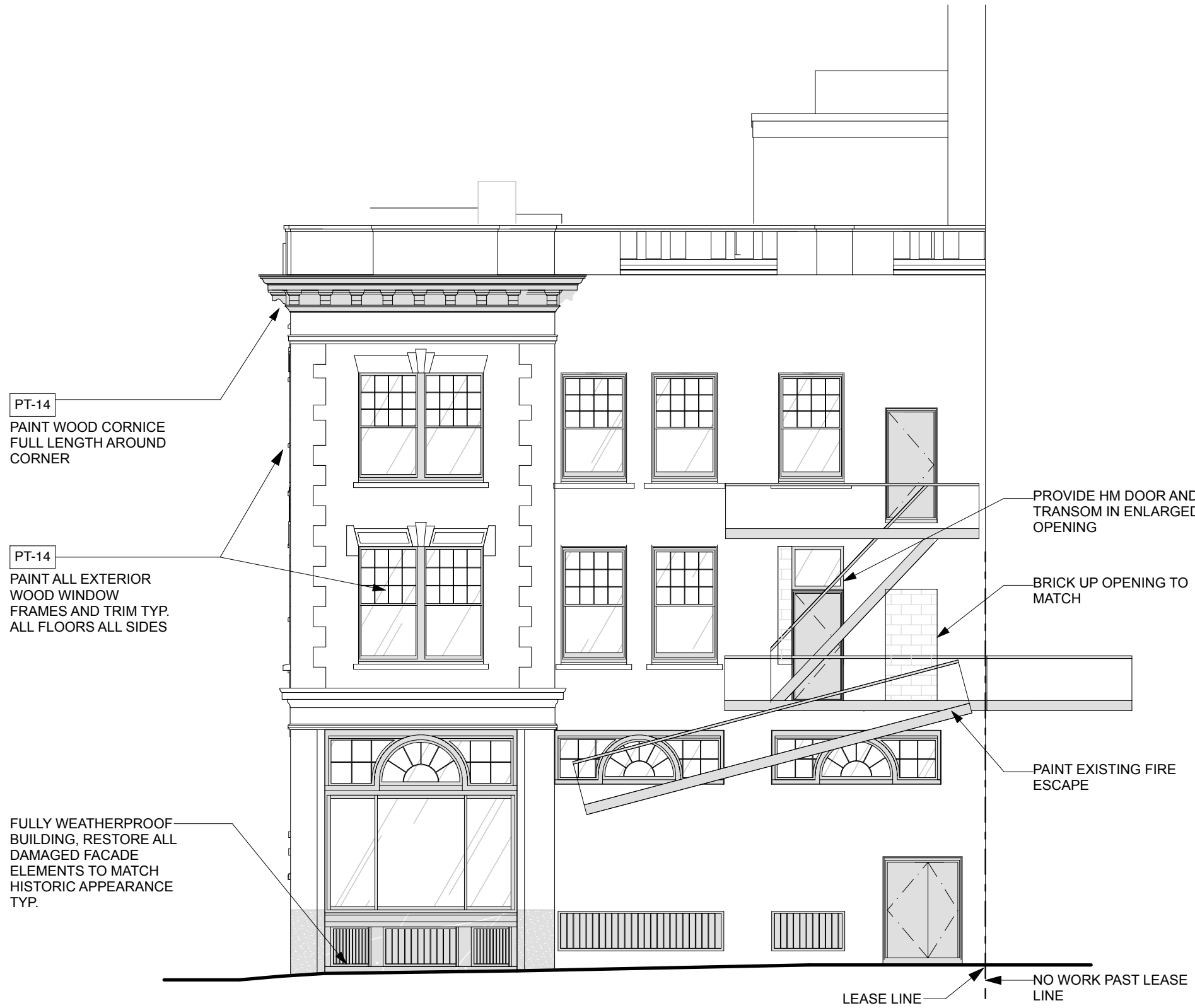
PT-14
PAINT ALL EXTERIOR
WOOD WINDOW
FRAMES AND TRIM TYP.
ALL FLOORS ALL SIDES

PT-14
PAINT EXISTING FIRE
ESCAPE

PLAQUE IN EXISTING
LOCATION

SEE DETAIL ELEVATION

LEASE LINE



KEY PLAN

Materials & Finishes



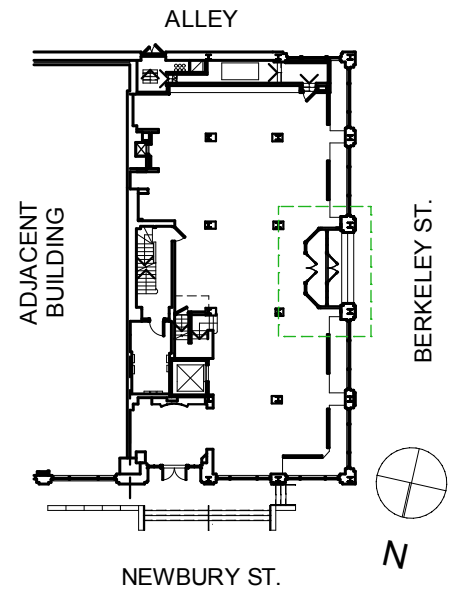
Aluminum Powder Coated Charcoal-color



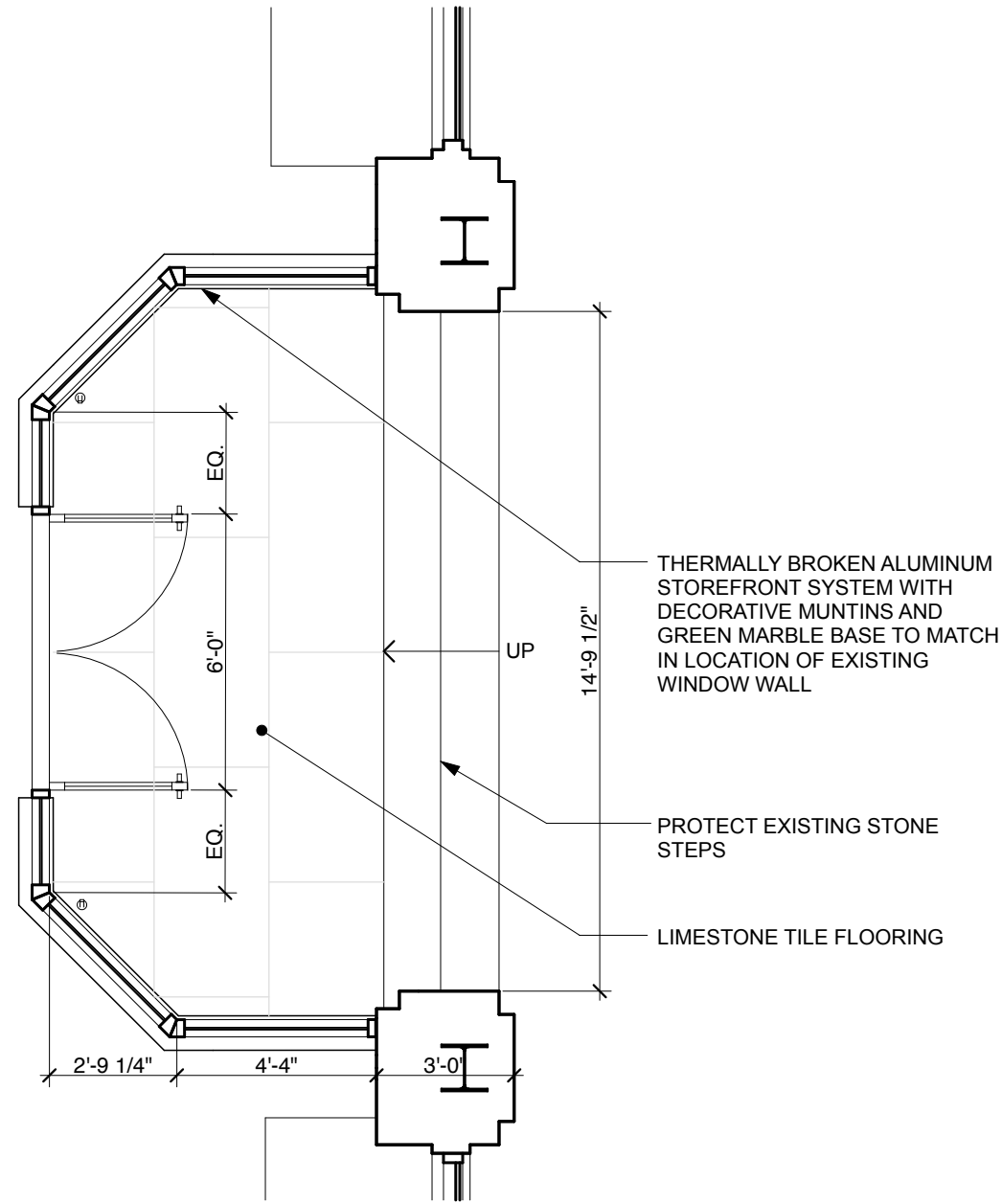
Paint - "Match F&B Slipper Satin" color (PT-14)



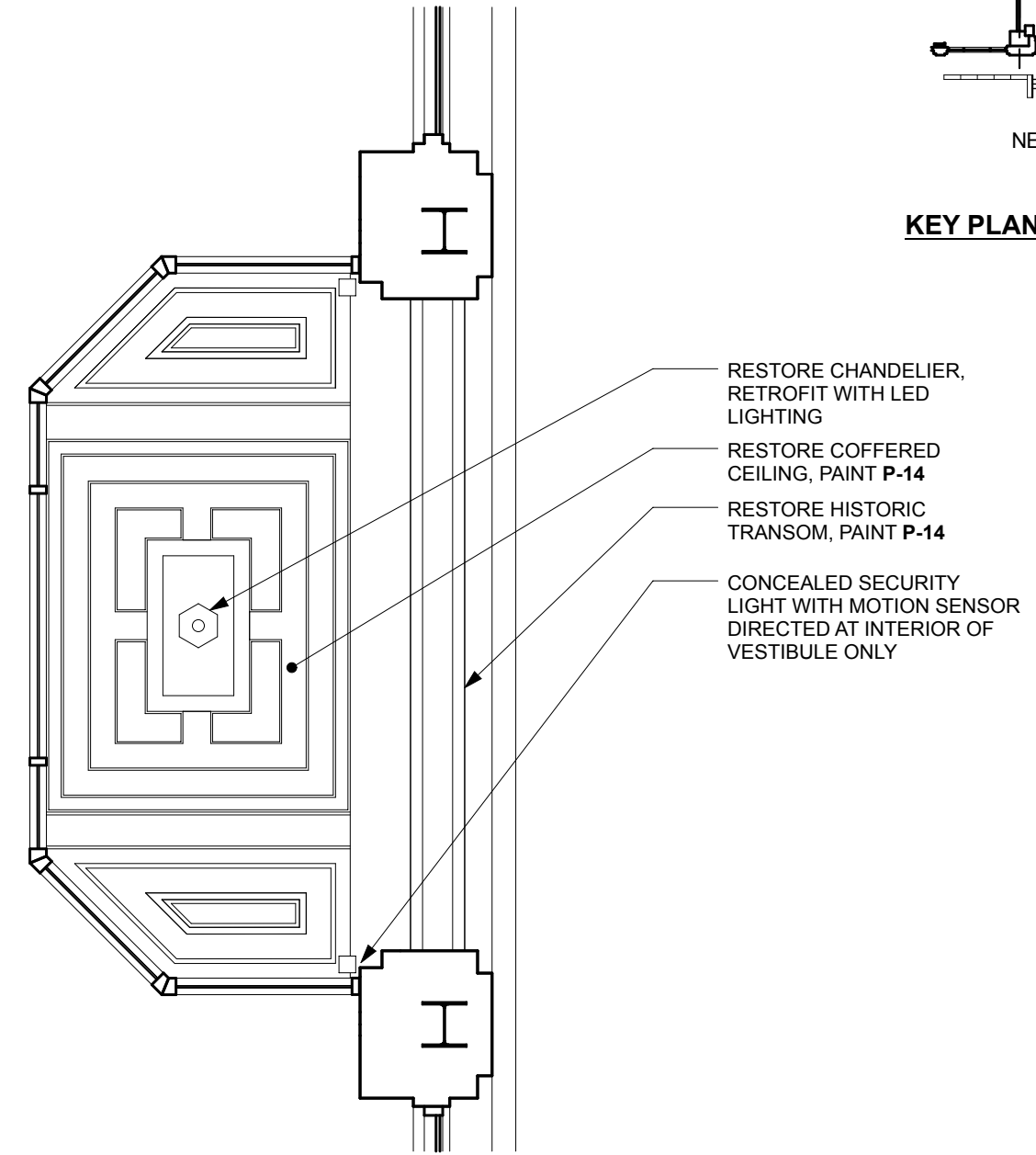
Dark Green Marble to match existing on building.



KEY PLAN



PLAN DETAIL



REFLECTED CEILING PLAN

Materials & Finishes



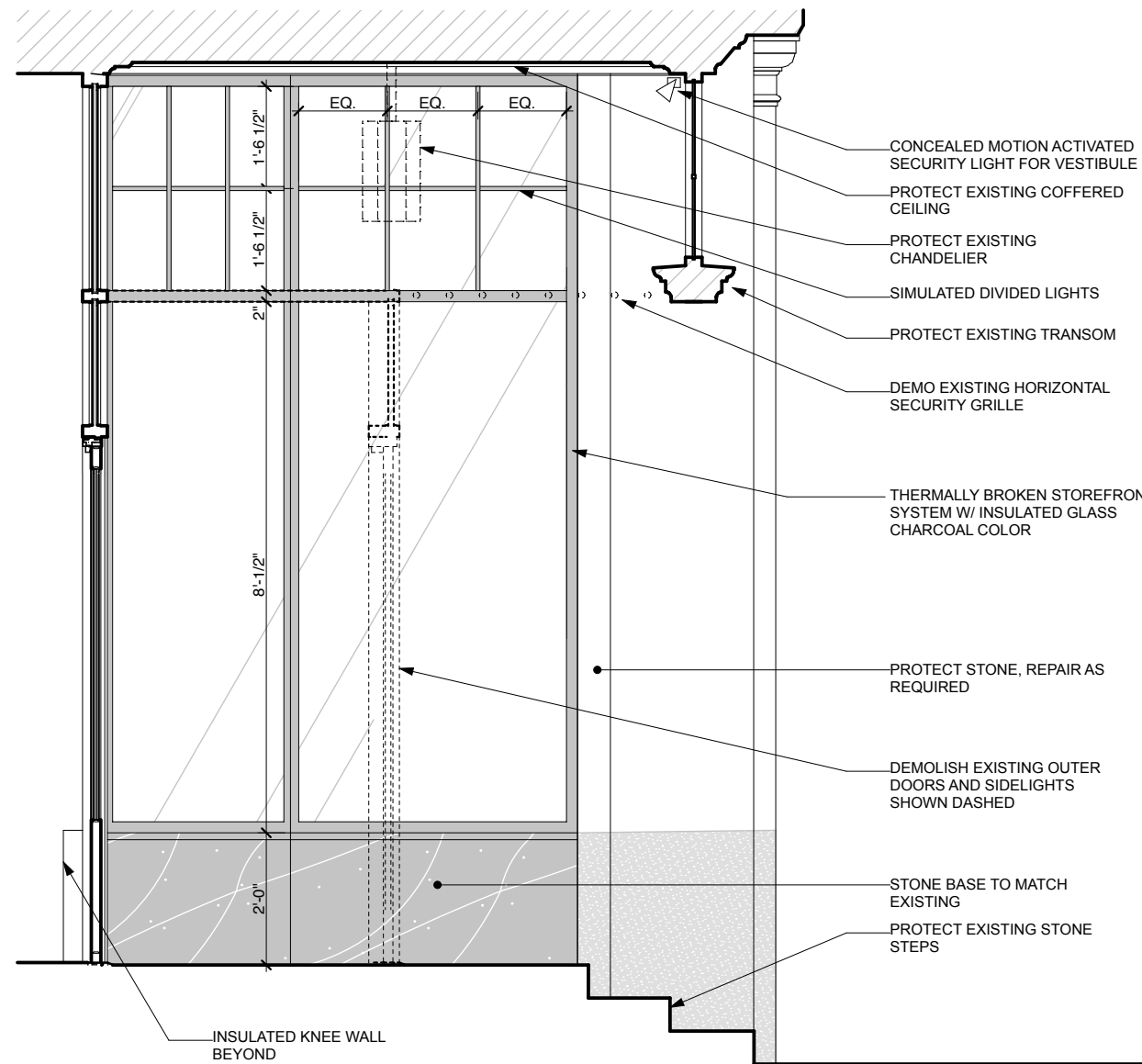
Aluminum Powder Coated Charcoal-color



Paint - "Match F&B Slipper Satin" color (PT-14)

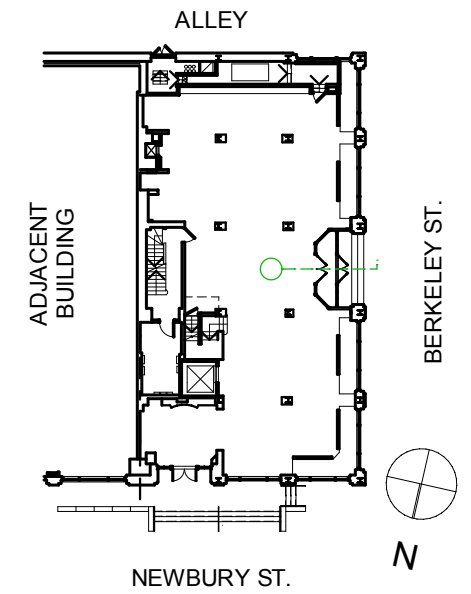


Dark Green Marble to match existing on building.



- CONCEALED MOTION ACTIVATED SECURITY LIGHT FOR VESTIBULE
- PROTECT EXISTING COFFERED CEILING
- PROTECT EXISTING CHANDELIER
- SIMULATED DIVIDED LIGHTS
- PROTECT EXISTING TRANSOM
- DEMO EXISTING HORIZONTAL SECURITY GRILLE
- THERMALLY BROKEN STOREFRONT SYSTEM W/ INSULATED GLASS CHARCOAL COLOR
- PROTECT STONE, REPAIR AS REQUIRED
- DEMOLISH EXISTING OUTER DOORS AND SIDELIGHTS SHOWN DASHED
- STONE BASE TO MATCH EXISTING
- PROTECT EXISTING STONE STEPS

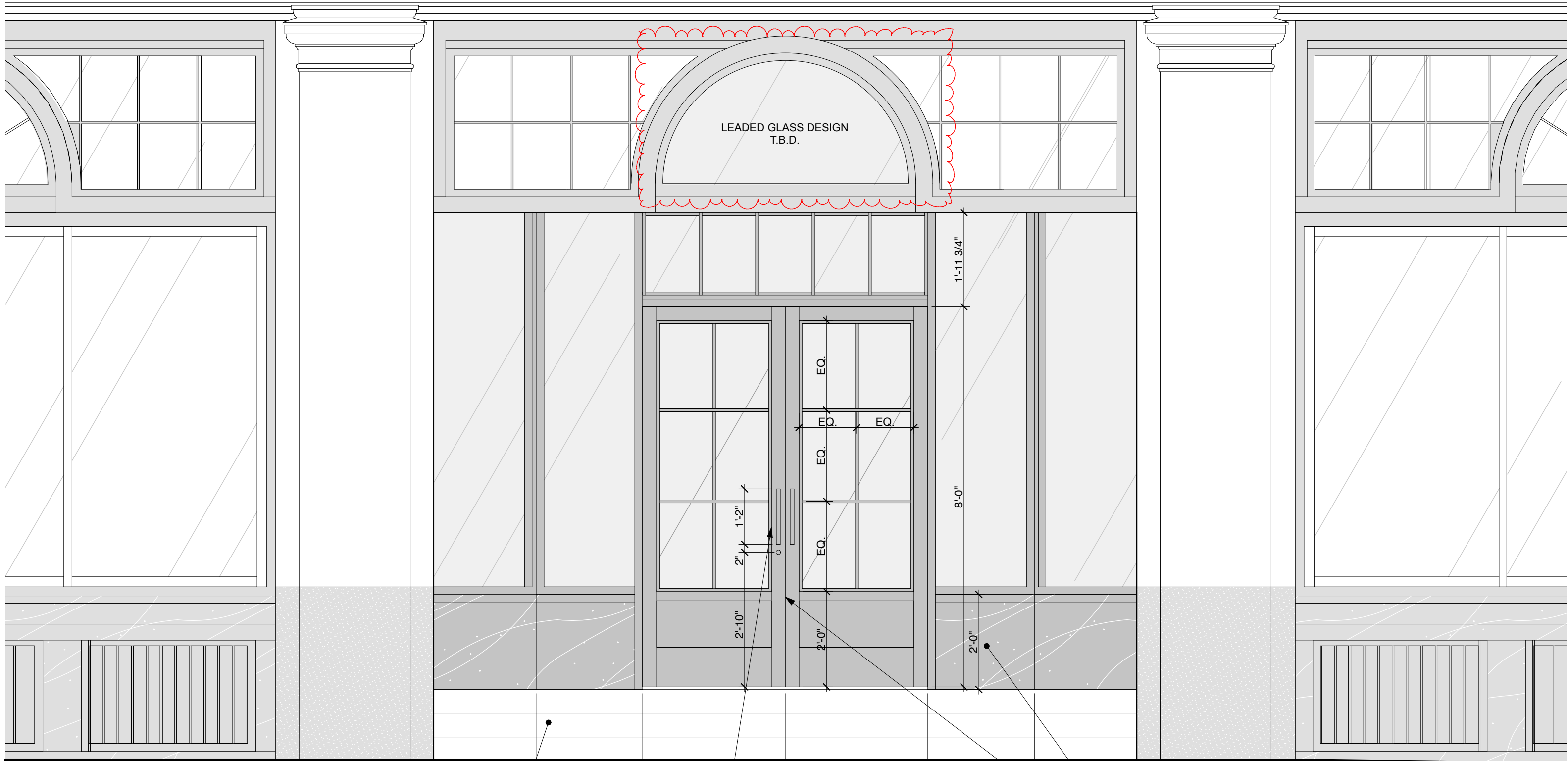
STOREFRONT SECTION



KEY PLAN

J.CREW

UNLIT PIN MOUNTED
SIGNAGE



LEADED GLASS DESIGN
T.B.D.

1'-11 3/4"

8'-0"

1'-2"

2'-10"

EQ.

EQ.

EQ.

EQ.

2'-0"

2'-0"

2'-3"

3'-0"

3'-0"

2'-3"

EXISTING STONE STEPS

UNLAQUERED BRASS
HARDWARE

GREEN MARBLE TO MATCH EXISTING IN
EXISTING LOCATION

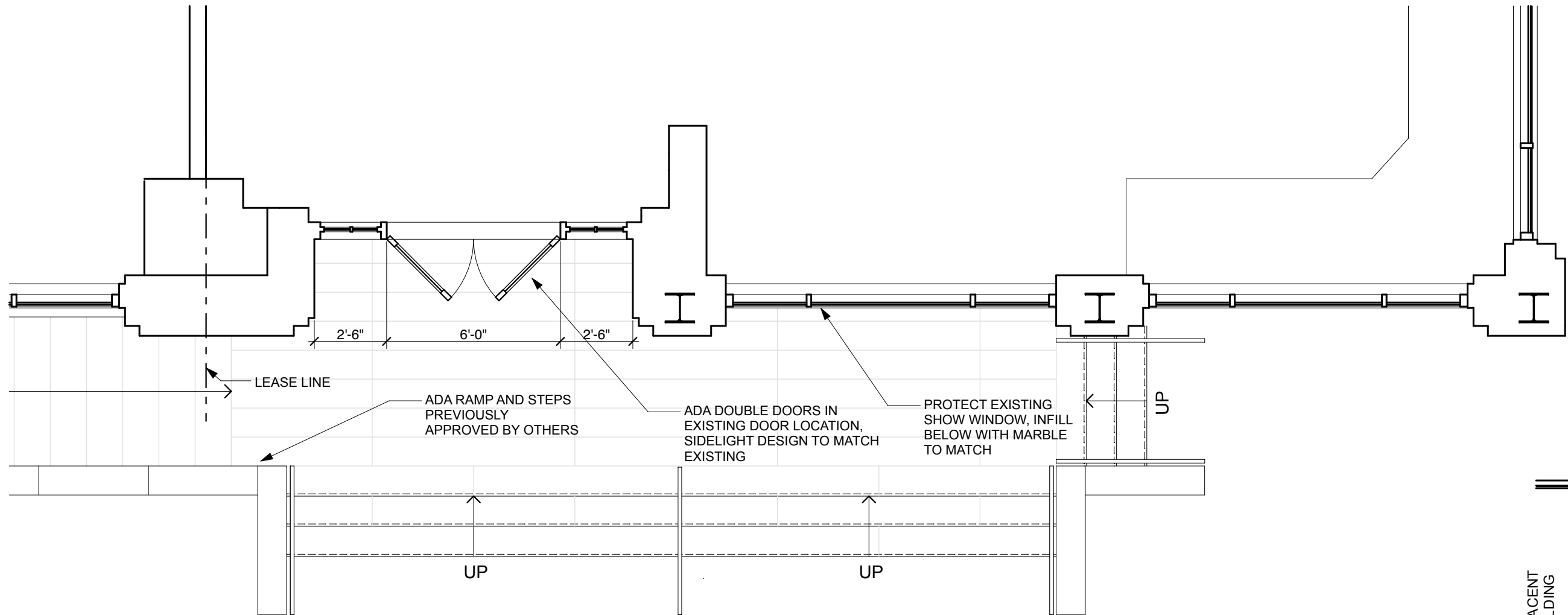
THERMALLY BROKEN ENTRY DOOR
FULL WEATHERSTRIPPING



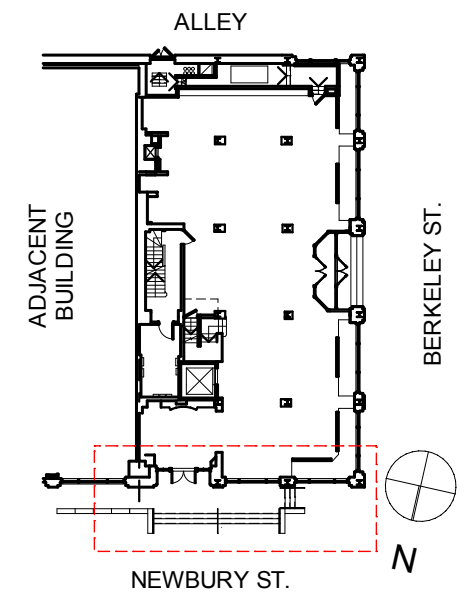
Existing Condition Photo



Proposed Condition Render



PLAN DETAIL



KEY PLAN

