



566 COLUMBUS AVE., SOUTH END // SOUTH END LANDMARKS // MARCH 2024



CORNER RETAIL SIGNAGE



566 COLUMBUS AVE., SOUTH END // SOUTH END LANDMARKS // MARCH 2024

SIGN SPECIFICATIONS

DESCRIPTION

surface applied cut vinyl numbers

TYPEFACES

helvetica bold

COLORS/FINISHES

black

INSTALLATION

surface applied to existing glass transom



Rendering
NTS

10 1/2" 570

LAYOUT
SCALE: 1 1/2" = 1-0"



4 Industrial Park Road, Medway, MA 02053
508.533.9000 • www.poblocki.com

This document is owned by and the information contained in it is proprietary to Poblocki Sign Company, LLC. By receipt hereof, the holder agrees not to use the information, disclose it to any third party or reproduce this document without the prior written consent of Poblocki Sign Company, LLC. Holder also agrees to immediately return this document upon request by Poblocki Sign Company, LLC.

This document represents only an approximation of material colors specified. Actual product colors may vary from this print or digital image.

Project

566 Columbus

Metric Construction
450 Mass Ave
Boston, MA 02118

Scale: Of Shown Graphics

See Individual Layouts/Sections/Elevations

Notes

color of numerals is shown as black however, white vinyl will be more visible than black vinyl

font is shown as supplied, however, the "566" address numerals is a different font - futura book font.

Revisions

REV	DESCRIPTION	BY	DATE
-----	-------------	----	------

Internal Assignment: Julio Rodriguez

Drawn By: Emmett Burson Orig. Date: 02.15.23

EXTID2

Exterior Glass
Building Identification

90481

EXTID2.1

Work Order #:

Drawing #:





566 COLUMBUS AVE., SOUTH END // SOUTH END LANDMARKS // MARCH 2024

SIGN SPECIFICATIONS

DESCRIPTION

surface applied cut vinyl numbers

TYPEFACES

helvetica bold

COLORS/FINISHES

black

INSTALLATION

surface applied to existing glass transom



Rendering
NTS

10 1/2" 450

LAYOUT
SCALE: 1 1/2" = 1-0"



4 Industrial Park Road, Medway, MA 02053
508.533.9000 • www.poblocki.com

This document is owned by and the information contained in it is proprietary to Poblocki Sign Company, LLC. By receipt hereof, the holder agrees not to use the information, disclose it to any third party or reproduce this document without the prior written consent of Poblocki Sign Company, LLC. Holder also agrees to immediately return this document upon request by Poblocki Sign Company, LLC.

This document represents only an approximation of material colors specified. Actual product colors may vary from this print or digital image.

Project

566 Columbus
Metric Construction
450 Mass Ave
Boston, MA 02118

Scale: Of Shown Graphics

See Individual Layouts/Sections/Elevations

Notes

color of numerals is shown as black however, white vinyl will be more visible than black vinyl

font is shown as supplied, however, the "566" address numerals is a different font - futura book font.

Revisions

REV	DESCRIPTION	BY	DATE
-----	-------------	----	------

Internal Assignment: Julio Rodriguez

Drawn By: Emmett Burson Orig. Date: 02.15.23

EXTID3

Exterior Glass
Building Identification

90481

EXTID3.1

Work Order #:

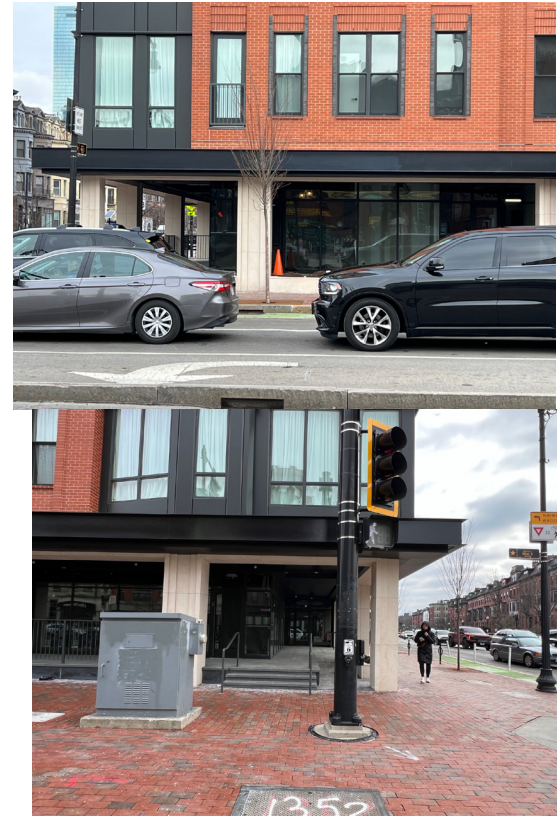
Drawing #:

570 COLUMBUS AVE, BOSTON, MA



1236 Eastern Avenue • Malden, MA
CRGGraphics.com

BEFORE



AFTER



Massachusetts Ave side

1" THICK PAINTED PVC LETTERS WILL BE ATTACHED USING 3M VHB MOUNTING TAPE AND SILICONE GLUE

"CACAO" LETTERS AND LOGO ARE 17" TALL X 78" WIDE

SIGN BAND IS 20" TALL



"CHOCOLATE & COFFEE" ARE 4.5" TALL X 55" WIDE X 3/4" PVC

36" WHITE VINYL LOGOS WILL BE INSTALLED ON 2 WINDOWS



Columbus Ave side