

Public Garden Tool House Renovation

Community Meeting
June 28, 2023



City of Boston
Parks and Recreation
Mayor Michelle Wu

utile

Meeting Recording



The Boston Parks and Recreation Department will be recording the meeting and posting to our project webpage for those who are unable to attend the Zoom meeting live.

It is possible that participants may also be recording the meeting with their phones cameras or other devices. If you do not wish to be recorded during this meeting, please keep your microphone and camera off.

Virtual Meeting Etiquette

We want to ensure this conversation is a pleasant experience for all and that all community members / stakeholders are comfortable sharing their comments, questions and feedback.

Please be respectful and mindful of each other's time when asking questions / providing comments, so that all attendees are able to participate in the meeting.

Keep questions / comments project-specific and not personal to yield solution-driven discussion.

Please wait until all attendees have had the opportunity to ask a question / provide a comment before providing additional questions / comments.

You can always set up a conversation with Nathan Frazee, Nathan.Frazee@boston.gov or H el ene Gu ezennec, Helene.Guezennec@boston.gov to further discuss the project or process.

Zoom Tips

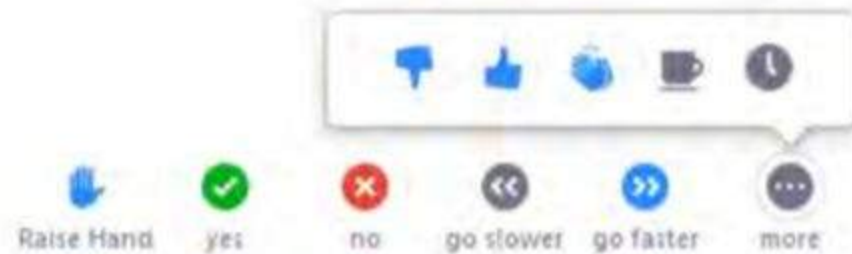
Here is how you can participate during the question and answer part of the presentation.

DURING THE PRESENTATION:



VIA WEB:

Turn video on / off.



To use these non-verbal options click on participants (bottom of screen); these options will pop up in side bar.

DURING THE Q&A:



JOINING VIA PHONE?

Use *9 to raise hand to ask for audio / video permission to ask questions or provide comments.



VIA WEB:

Chat to ask questions / comments or provide responses to poll questions



Raise hand to ask for audio / video permission to ask questions or provide comments.

Project Team

City of Boston Project Team

Michelle Wu, Mayor

Dion Irish, Chief of Operations

Parks and Recreation Department

Ryan Woods, *Commissioner*

Cathy Baker-Eclipse, *Director of the Capital Plan*

Nathan Frazee, *Project Manager*

Tiffani Caballero, *Outreach Coordinator*

Public Facilities Department

Kerrie Griffin, *Director*

Evan Brinkman, *Assistant Director of Design*

Lisa Guscott, *Assistant Director for Operations*

Hélène Guézennec, *Project Manager*

Angela Chan, *Senior Review Architect*

Consultant Team

Utile Architecture and Planning

Brett Bentson, *Principal*

Maressa Perreault, *Project Manager*

Sarah Ritchey, *Project Architect*

Cherry Yang, *Project Designer*

Kyle Zick Landscape Architecture

Kyle Zick, *Principal*

Agenda

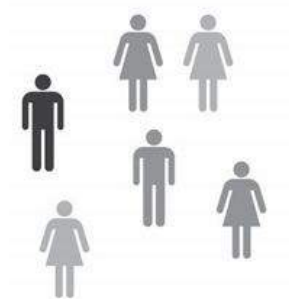
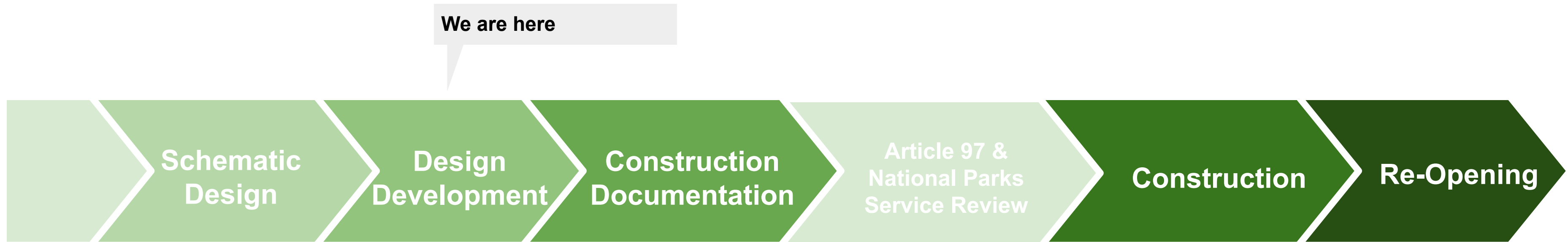
Community Meeting
June 28, 2023

- 1. Introductions**
- 2. Goals and Schedule**
- 3. Parks Department Goals & Objectives**
- 4. Context**
- 5. History & Existing Conditions**
- 6. Plans and Proposed Addition**
- 7. Q&A Discussion**

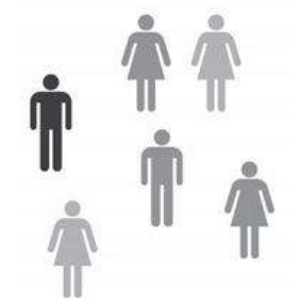
Goals & Objectives

- 1. Address critical repairs to the aging building**
- 2. Provide a maintenance facility sufficient for the needs of the Public Garden**
- 3. Improve interior space for Parks Department staff and Swan Boats team**

Project Schedule



Community Input



Community Input

Nathan Frazee, *Parks Department Project Manager*
Nathan.Frazee@boston.gov

Hélène Guézennec, *Public Facilities Department Project Manager*
Helene.Guezennec@boston.gov

City of Boston Priorities

- **Expanding walkable access to parks**
- **Addressing equity**
- **Climate resilience**
- **Health**
- **Housing and community building**



Parks & Recreation Priorities

- **Accessible and available to all**
- **Diverse, balanced, and efficient mix of uses**
- **Meaningful and inclusive community engagement**
- **Adaptive and resilient landscapes**
- **Promote connections**

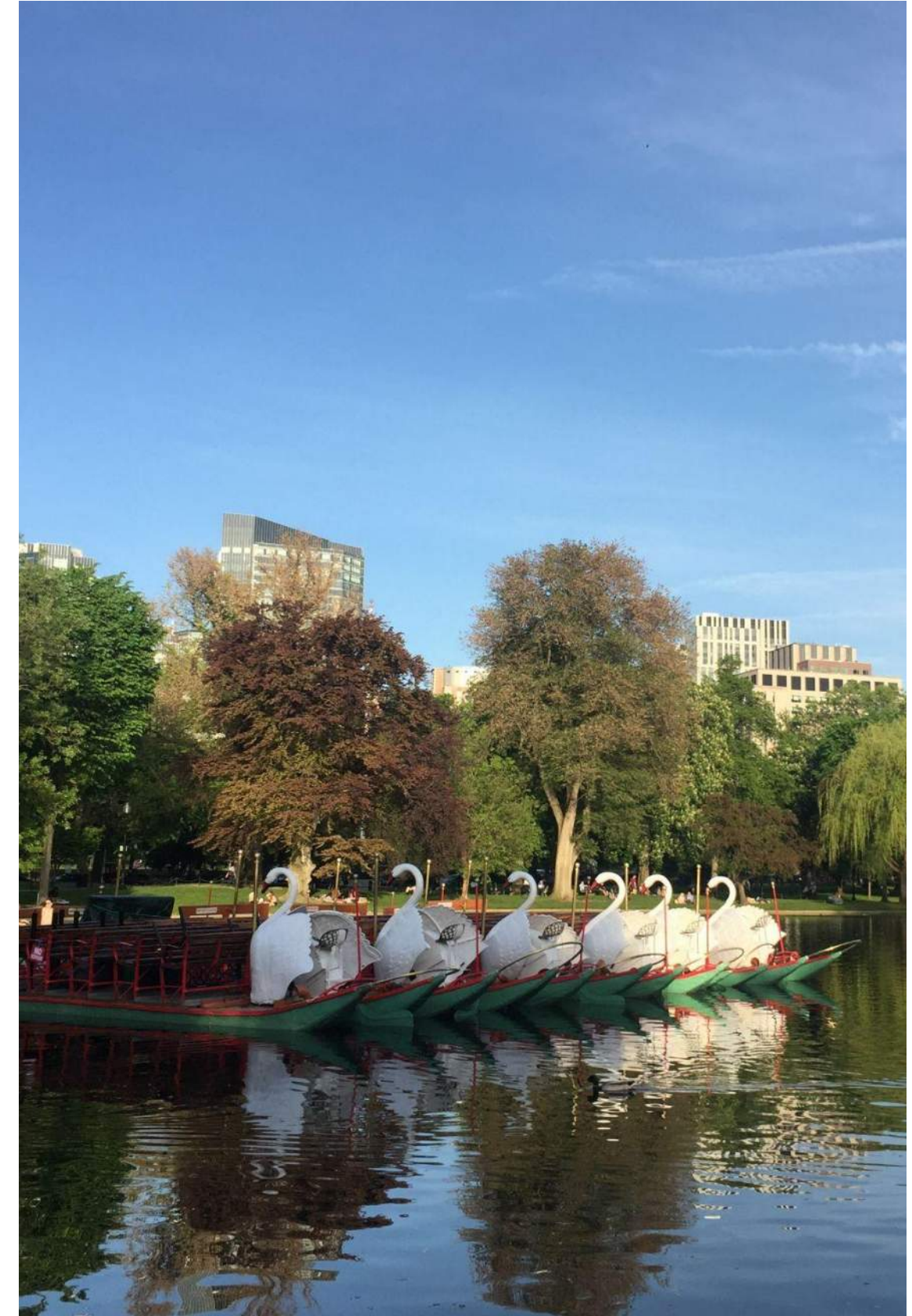


Context

Location



Public Garden



Site Plan

Public Garden:
24 acres / 1 Million Square Feet

Tool House:
642 Square Feet
(450 square feet dedicated to
Park maintenance uses)



History & Existing Conditions

Evolution of the Building



1890

ENGINEERING REVIEW. April, 1912.

Fig. 15. Public Comfort Station at West Street in Boston Common for Women Only

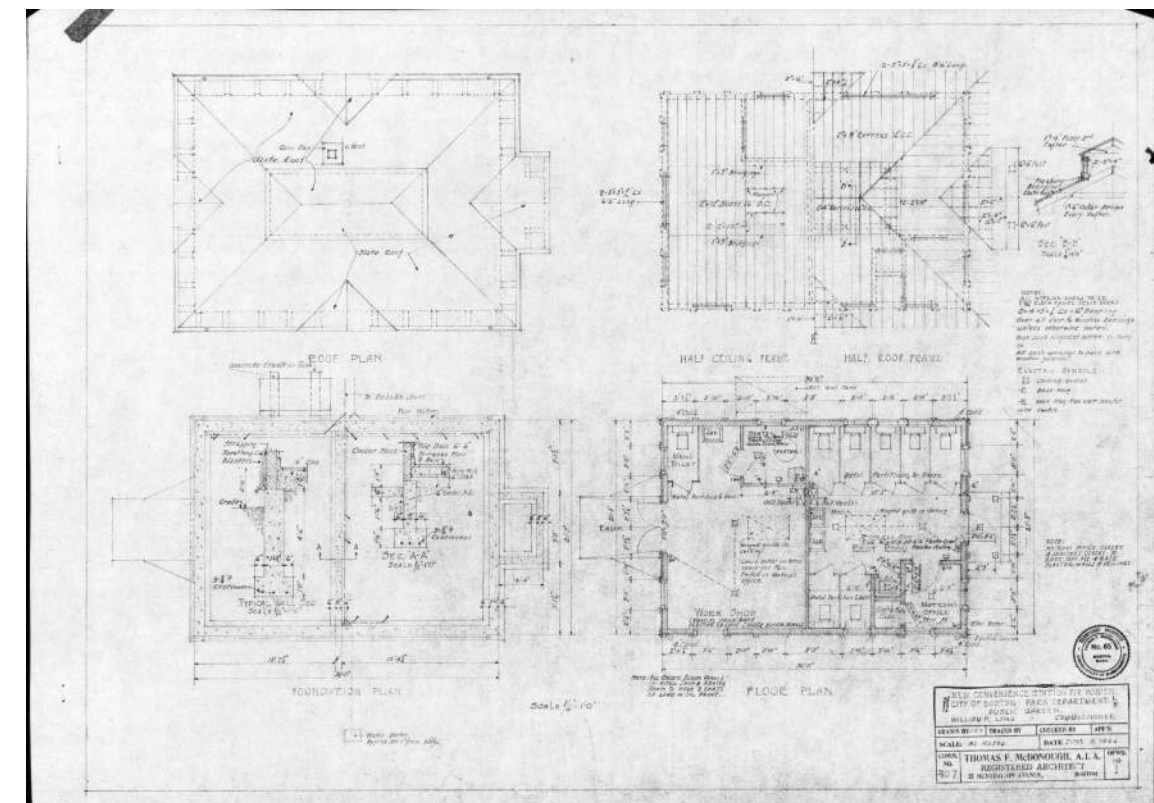
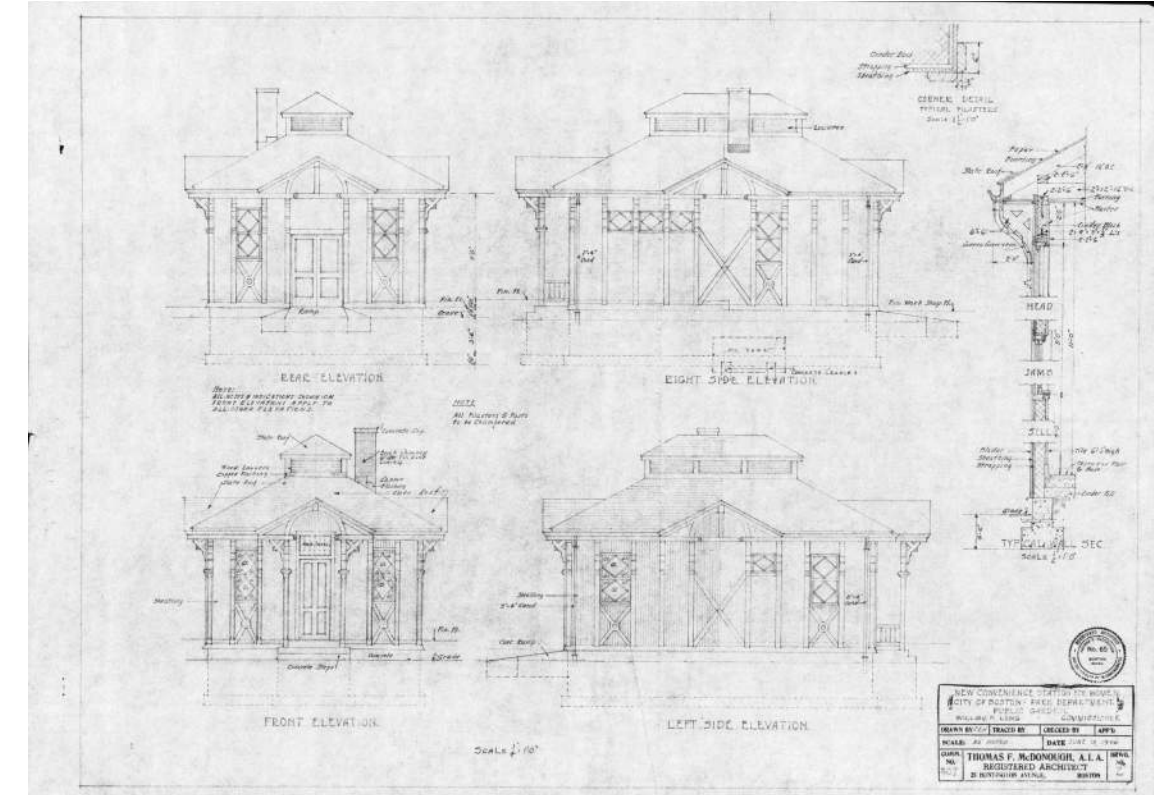
the citizens in demands made in a reasonable and dignified way.

It is to be regretted that funds have not been available for repairs and for new constructions. The house on Flagstaff Hill is in poor condition and inadequate for the demands upon it, and it is intended to locate an underground station at this place.

Under the present system the hours of use of the different establishments and the number of attendants required are given in the accompanying table:

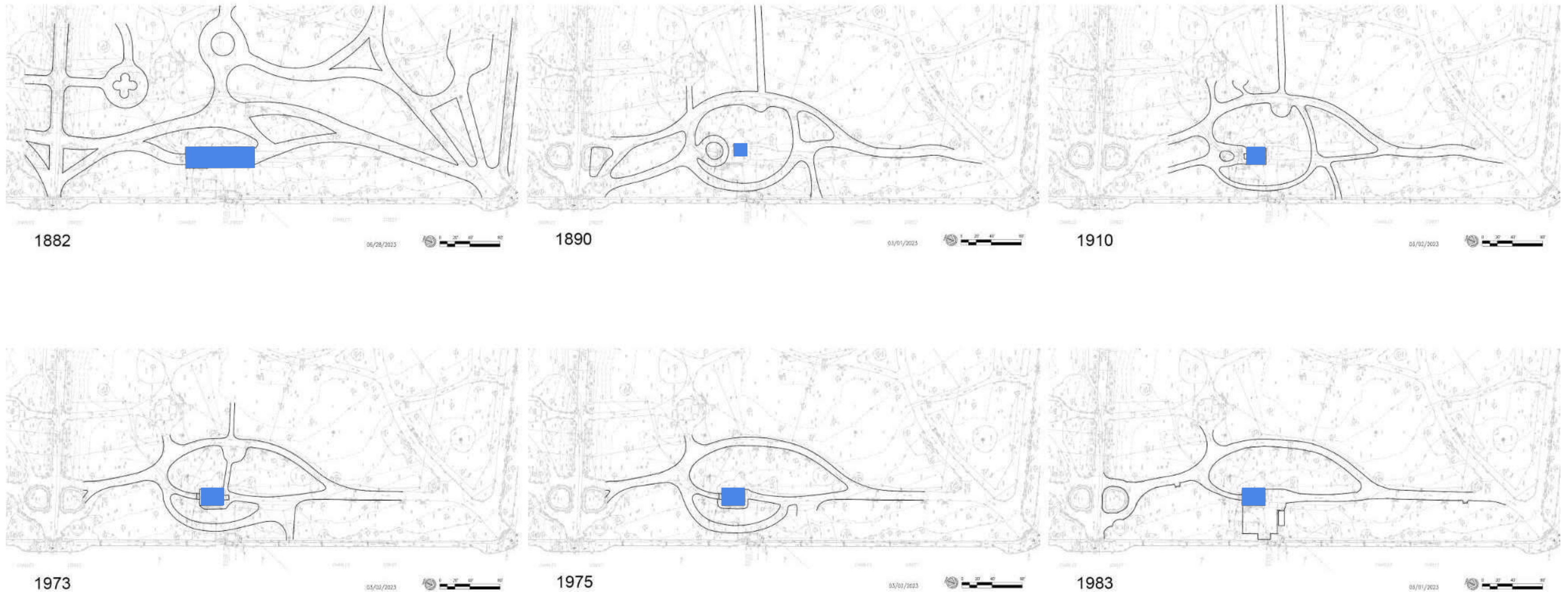
Station.	Hours.	Number of Attendants.
Men's underground, Common.....	24 hours	4
Urinals	Never closed	1
City Hall.....	8 A.M. till 4 P.M.	1
Richmond Street, for men only.....	7 A.M. till 4 P.M.	1
Merrimac Street.....	7 A.M. till 3 P.M.	1
Phoenix Hill, for men only.....	7 A.M. till 4 P.M.	1
Women's underground, Common.....	7 A.M. till 11 P.M.	1
Cottage, Common, West St., for women only.....	7 A.M. till 3 P.M.	2
Cottage, Public Garden, for women only.....	7 A.M. till 3 P.M.	2

1912



1946

Path and Building Footprint Changes Over Time



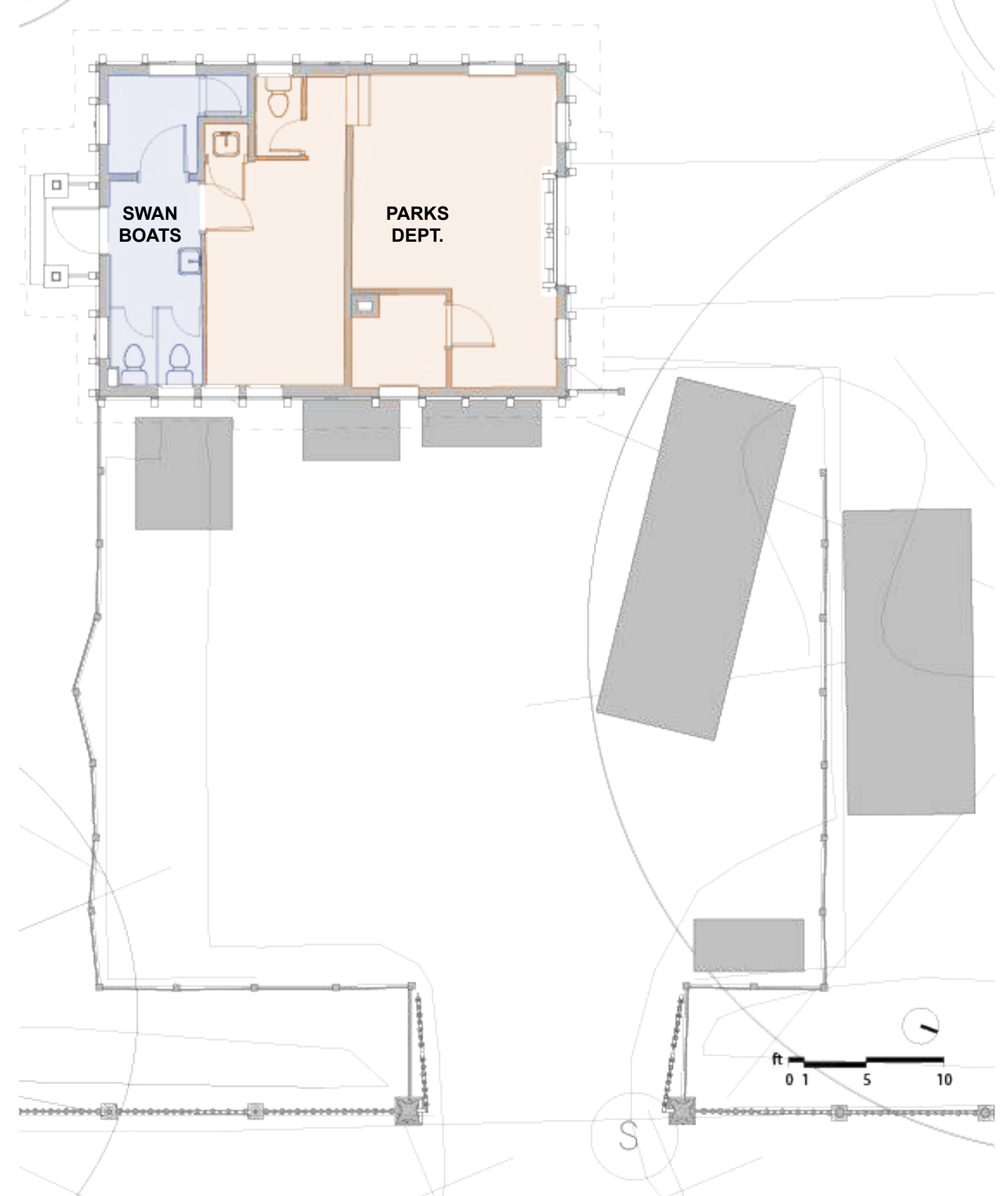
Current Condition



Function

Swan Boats

Parks Dept. Public Garden Maintenance



Function

Swan Boats: 130 sf

storage, WC, equipment, and other secure items

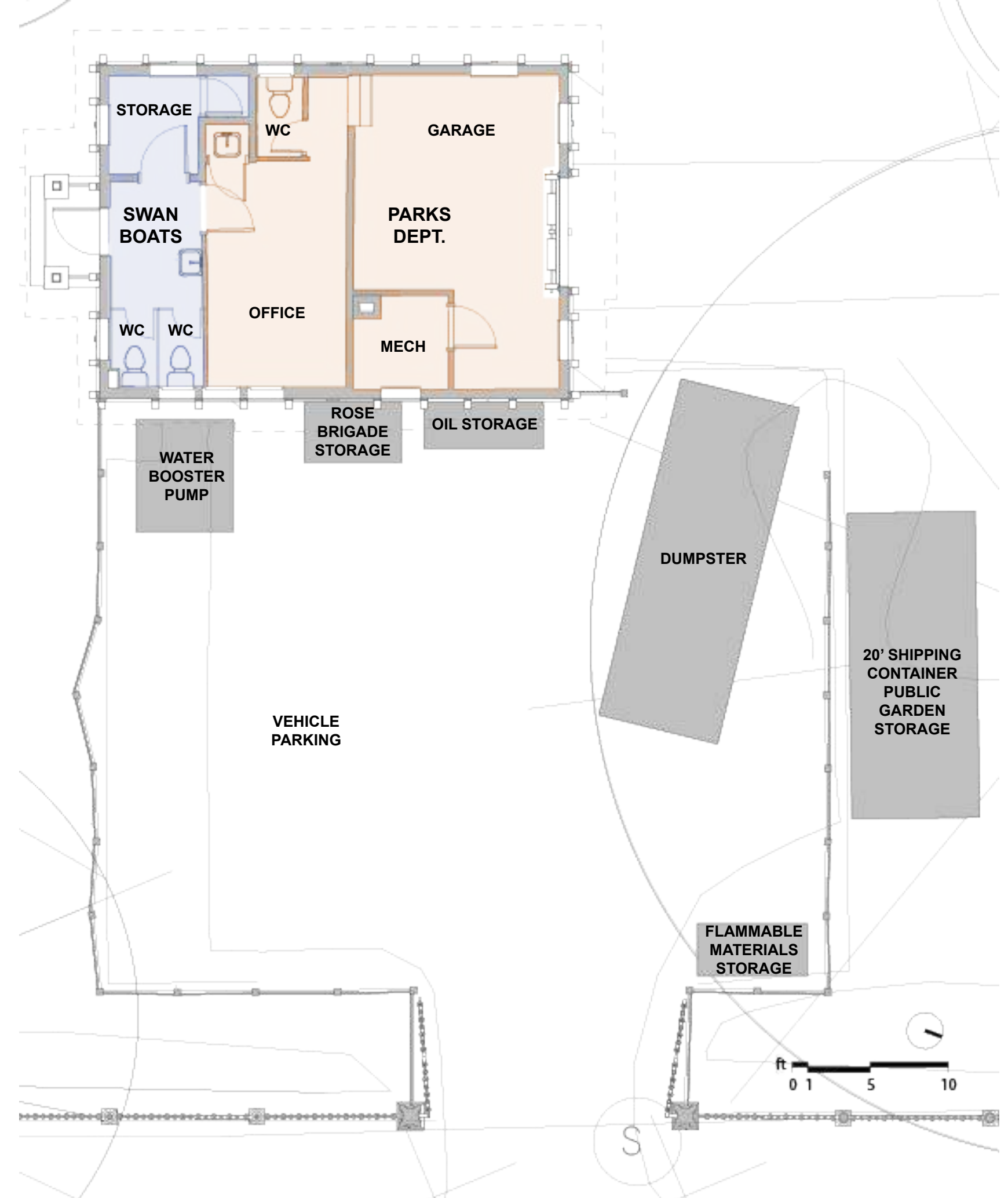
Parks Dept. Public Garden Maintenance: 449 sf

Garage 229 sf: storage, maintenance tools and heavy supplies, large equipment for Public Garden maintenance often double parked or need to be moved to make way for other equipment

Office 163 sf: staff office, a couch for overnight stay in winter, a sink, office storage and supplies

Mechanical & WC 57 sf

Paved Area: 1,905 sf



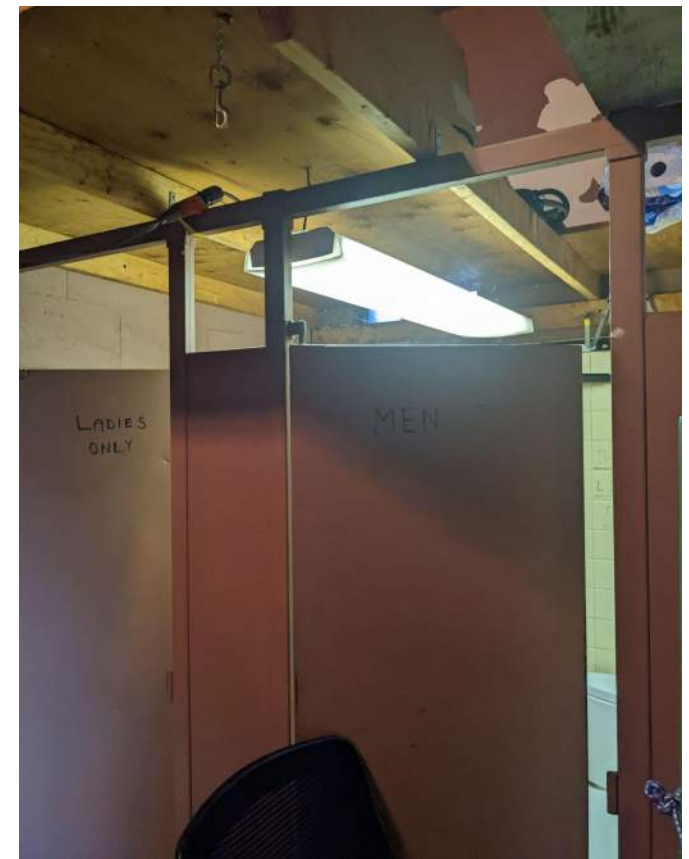
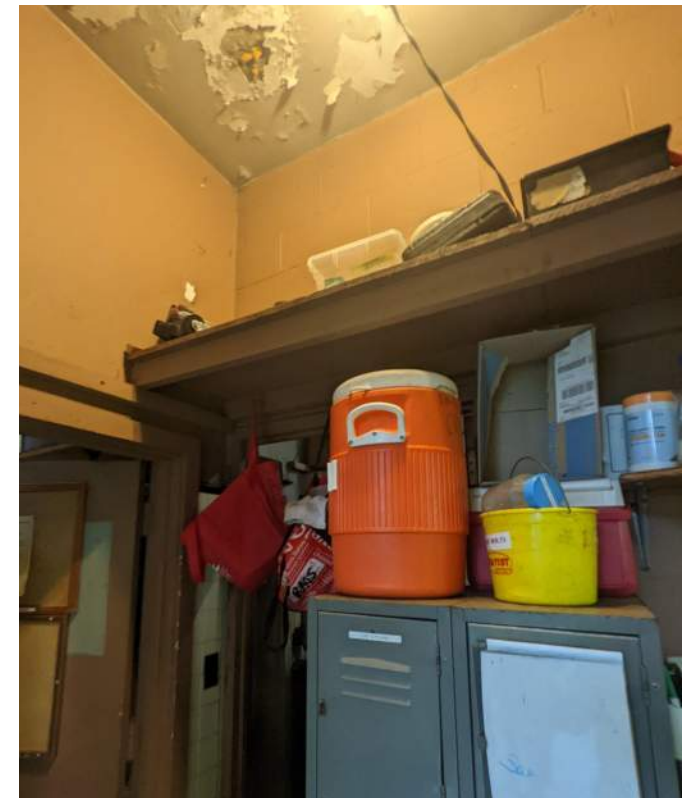
Exterior



Exterior



Interior



Maintenance Yard



Space Needs Spill Into Park



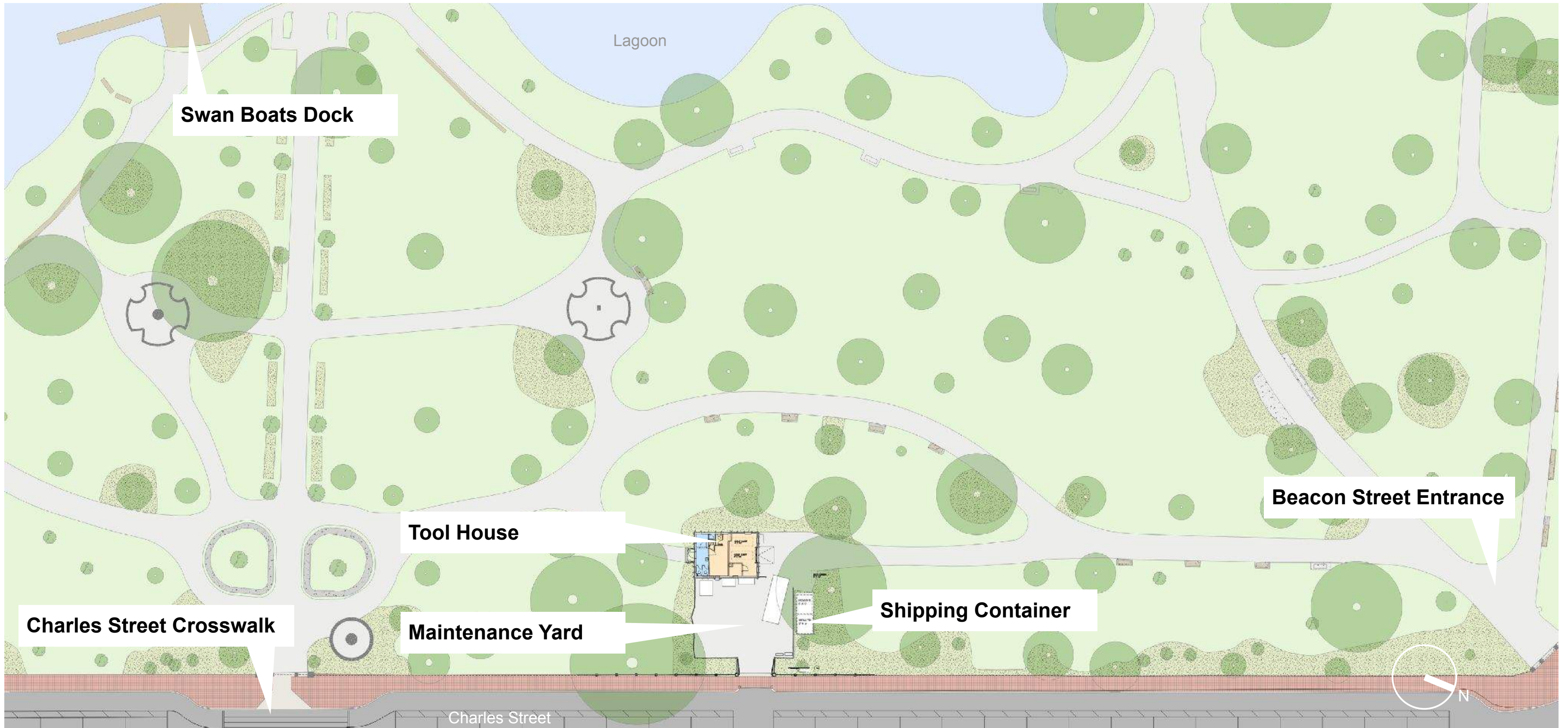
Landscape



Landscape



Existing Conditions



Existing Conditions

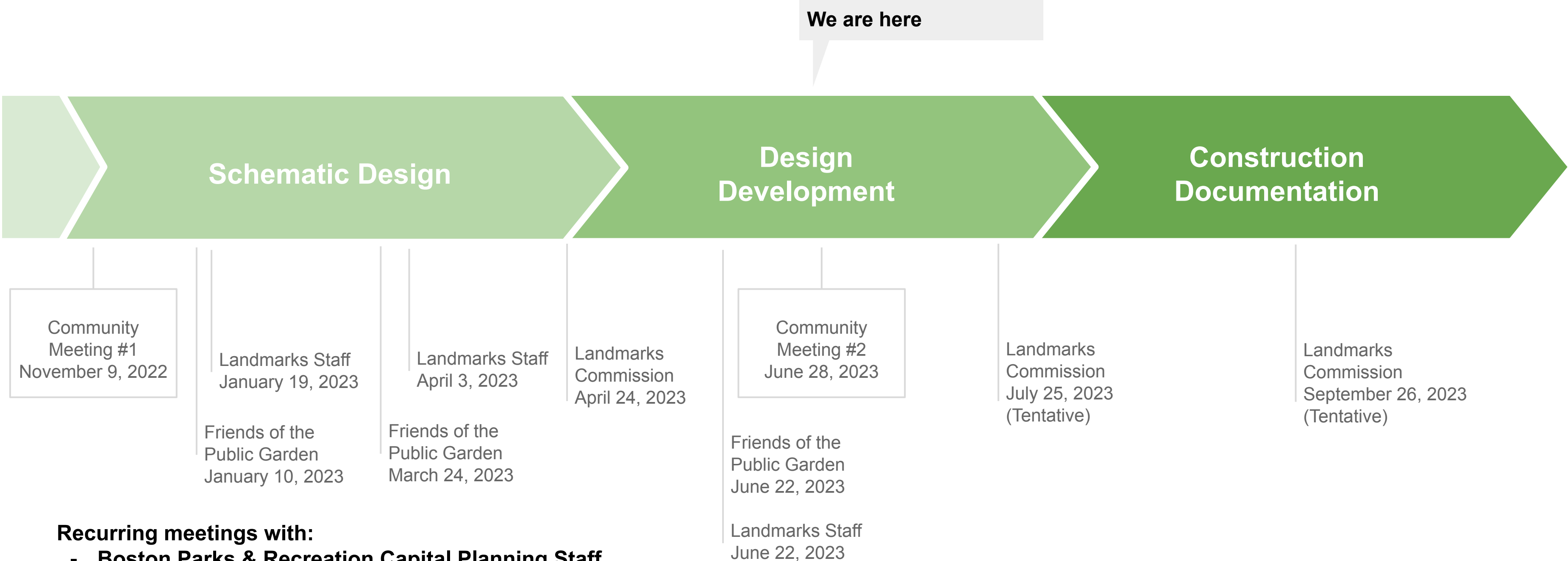


Existing Conditions



Plans and Proposed Addition

Stakeholder Review



Recurring meetings with:

- Boston Parks & Recreation Capital Planning Staff
- Boston Parks & Recreation Maintenance Staff
- Swan Boats Staff

Constraints for Expansion



Plan Iterations



Proposed Plan

Swan Boats & garage

New narrowed path

New path

Lower south slab height to match garage slab for barrier-free access

New fence & gates

Mix of selected Evergreen and Deciduous foundation planting at varying heights

Extents of existing paving

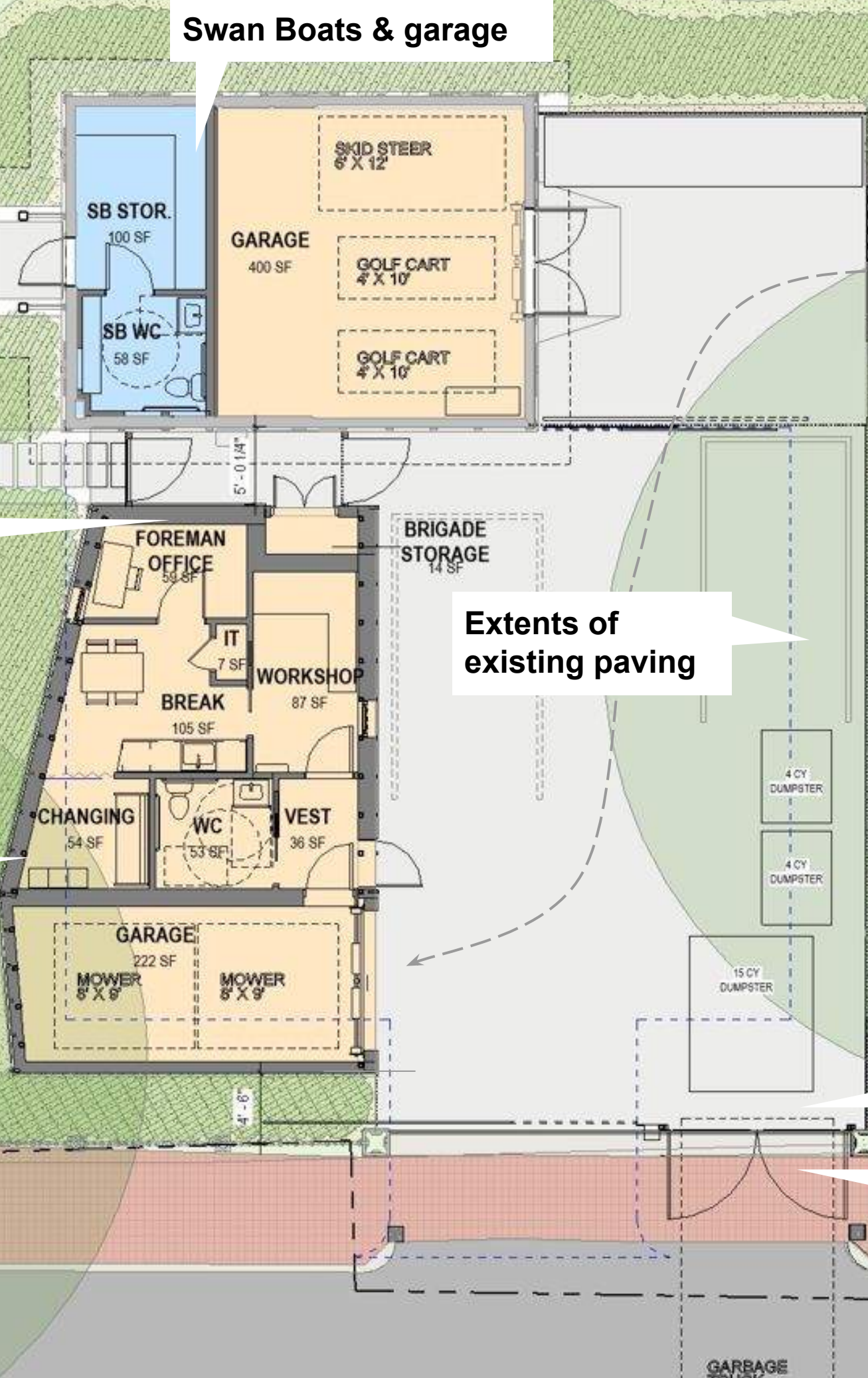
Minimal disturbance to English Oak

New opaque fence around parking area

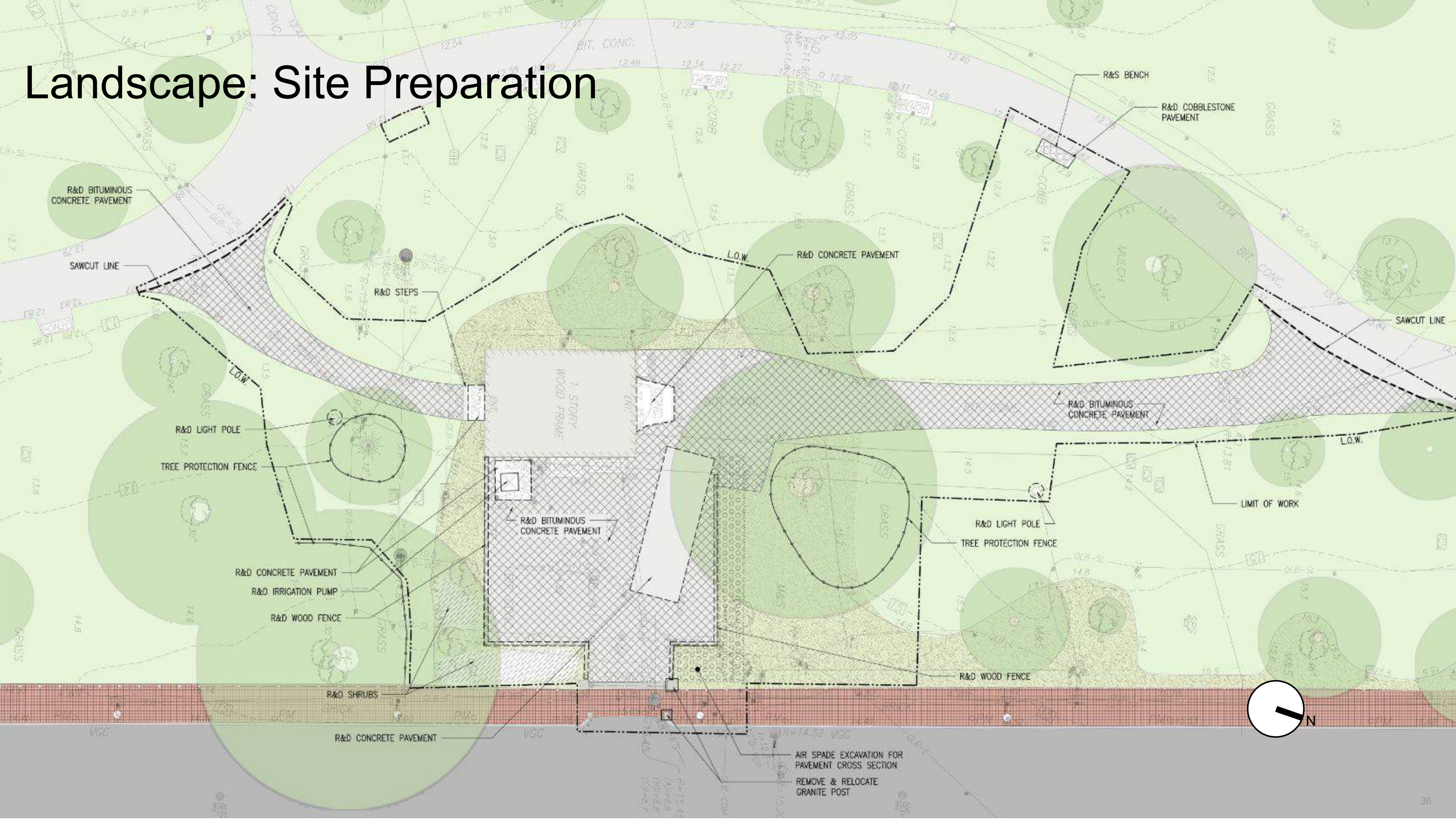
Minimal disturbance to Honey Locust & Willow

Sliding Gate with adjacent Swinging Gate for Dumpster access

Expanded curb cut for garbage truck access



Landscape: Site Preparation



Landscape: Site Preparation



Landscape: Proposed

Relocated bench

Reconfigure path

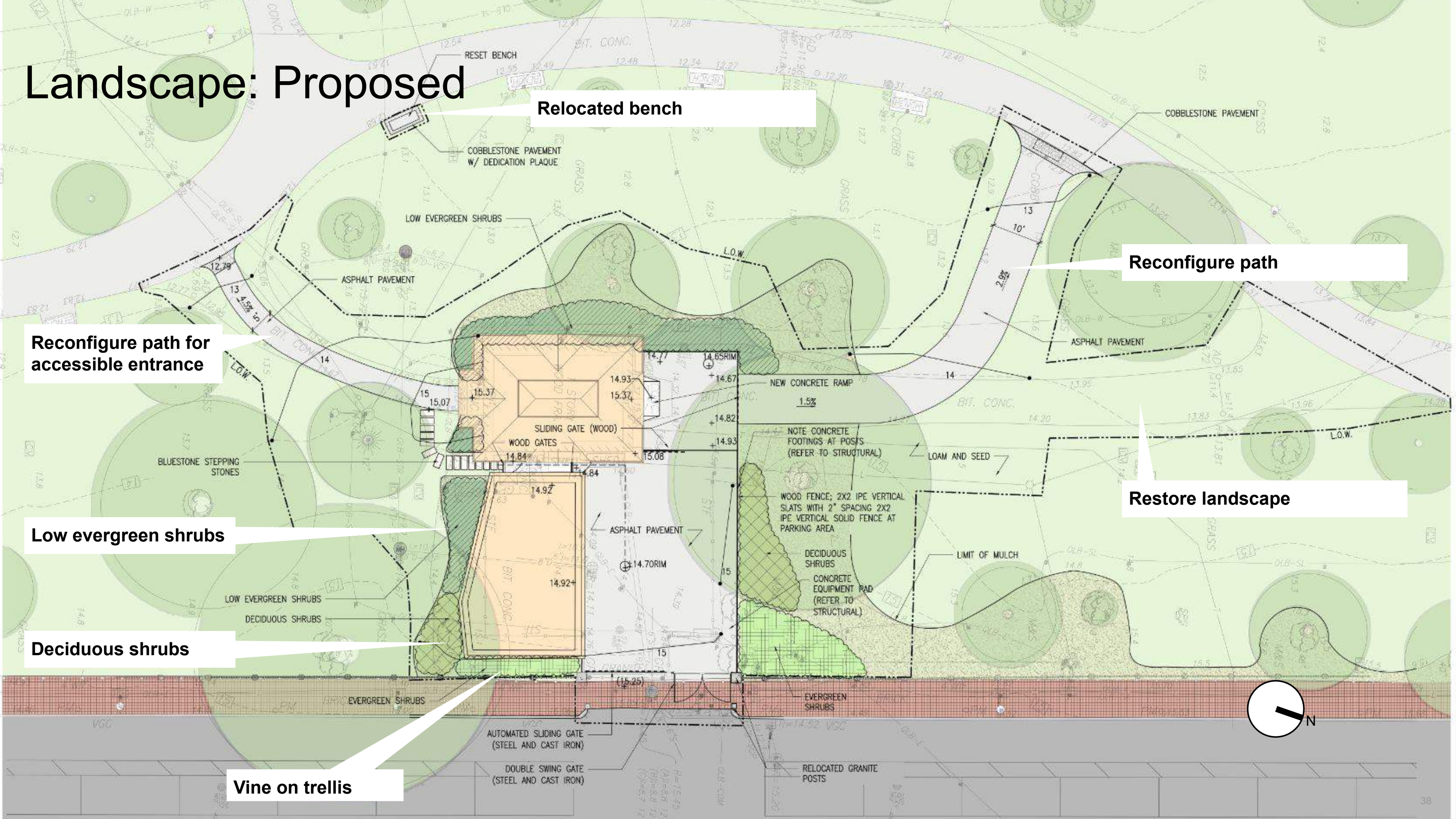
Reconfigure path for accessible entrance

Restore landscape

Low evergreen shrubs

Deciduous shrubs

Vine on trellis



Landscape: Plant Palette

North Facade



Virginia Sweetspire



Leucothoe

East Facade



Henryi Clematis

South Facade



Oakleaf Hydrangea



Helleri Holly

West Facade



Ken Janeck Rhododendron



Everlow Yew

Proposed Color Palette



Existing - Monochrome



Proposed - Analogous

Chicamacomico Life-Saving Station, Hatteras Island, NC

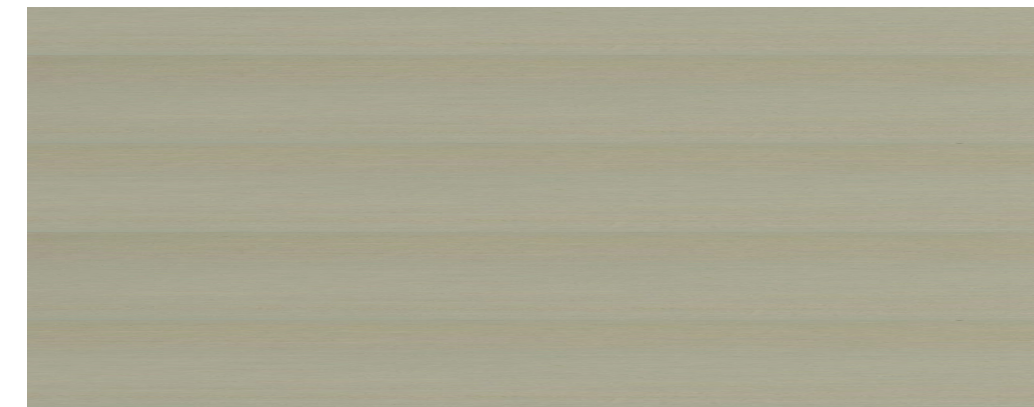
Source: *Chicamacomico Historical Association*

<https://www.outerbanks.org/blog/post/step-back-in-time-a-coast-guard-history-visit-on-the-obx/>



Trim Color

Wall Color



Wall Color (New Construction)

View from North

Existing



View from North

Proposed



View from Public Garden Suspension Bridge

Existing



View from Public Garden Suspension Bridge

Proposed



View from South, Charles Street Crossing

Existing



View from South, Charles Street Crossing

Proposed



View from Charles Street Crosswalk

Existing

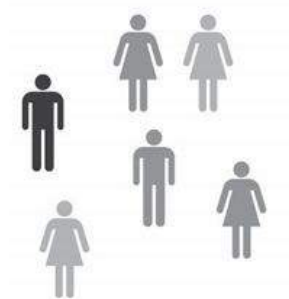
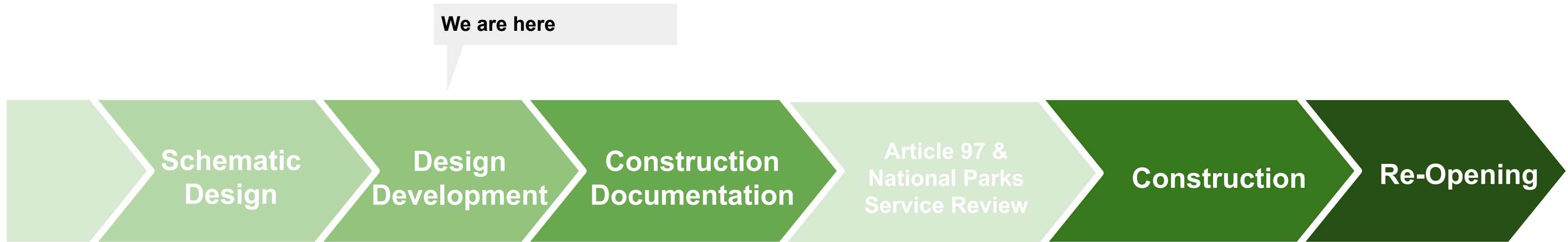


View from Charles Street Crosswalk

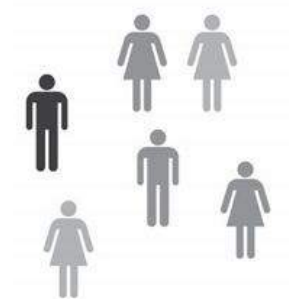
Proposed



Project Schedule



Community Input



Community Input

Nathan Frazee, *Parks Department Project Manager*
Nathan.Frazee@boston.gov

Hélène Guézennec, *Public Facilities Department Project Manager*
Helene.Guezennec@boston.gov

Thank You!

Questions? Comments?

For questions, maintenance requests, or concerns regarding any of our parks contact 311



Nathan Frazee, Parks Department Project Manager
Nathan.Frazee@boston.gov

Hélène Guézennec, Public Facilities Department Project Manager
Helene.Guezennec@boston.gov