

Public Garden Tool House Renovation

Community Meeting
November 9th, 2022



City of Boston
Parks and Recreation
Mayor Michelle Wu

utile

Meeting Recording



The Boston Parks and Recreation Department will be recording the meeting and posting to our project webpage for those who are unable to attend the Zoom meeting live.

It is possible that participants may also be recording the meeting with their phones cameras or other devices. If you do not wish to be recorded during this meeting, please keep your microphone and camera off.

Virtual Meeting Etiquette

We want to ensure this conversation is a pleasant experience for all and that all community members / stakeholders are comfortable sharing their comments, questions and feedback.

Please be respectful and mindful of each other's time when asking questions / providing comments, so that all attendees are able to participate in the meeting.

Keep questions / comments project-specific and not personal to yield solution-driven discussion.

Please wait until all attendees have had the opportunity to ask a question / provide a comment before providing additional questions / comments.

You can always set up a conversation with Nathan Frazee, Nathan.Frazee@boston.gov or H el ene Gu ezennec, Helene.Guezennec@boston.gov to further discuss the project or process.

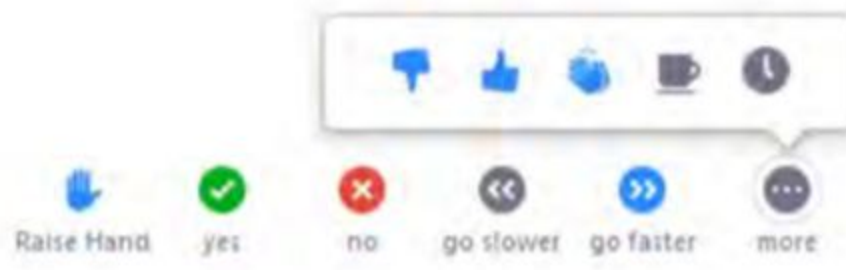
Zoom Tips

Here is how you can participate during the question and answer part of the presentation.

DURING THE PRESENTATION:



VIA WEB:
Turn video on / off.



To use these non-verbal options click on participants (bottom of screen); these options will pop up in side bar.

DURING THE Q&A:



JOINING VIA PHONE?
Use *9 to raise hand to ask for audio / video permission to ask questions or provide comments.



VIA WEB:
Chat to ask questions / comments or provide responses to poll questions



Raise hand to ask for audio / video permission to ask questions or provide comments.

Project Team

City of Boston Project Team

Michelle Wu, Mayor

Dion Irish, Chief of Operations

Parks and Recreation Department

Ryan Woods, *Commissioner*

Cathy Baker-Eclipse, *Director of the Capital Plan*

Nathan Frazee, *Project Manager*

Christine Brandao, *Outreach Coordinator*

Public Facilities Department

Kerrie Griffin, *Director*

Evan Brinkman, *Assistant Director of Design*

Dana DeMatteo, *Assistant Director for Construction*

Hélène Guézennec, *Project Manager*

Angela Chan, *Senior Review Architect*

Consultant Team

Utile Architecture and Planning

Brett Bentson, *Principal*

Maressa Perreault, *Project Manager*

Cherry Yang, *Project Designer*

Kyle Zick Landscape Architecture

Kyle Zick, *Principal*

Agenda

Community Meeting
November 9, 2022

- 1. Introductions**
- 2. Goals and Schedule**
- 3. Parks Department Goals & Objectives**
- 4. Context**
- 5. History & Existing Conditions**
- 6. Opportunities**
- 7. Q&A Discussion**

Goals & Objectives

- 1. Address critical repairs to the aging building**
- 2. Provide a maintenance facility sufficient for the needs of the Public Garden**
- 3. Improve interior space for Parks Department staff and Swan Boats team**

Project Schedule

We are here



Community
Input



Community
Input

Nathan Frazee, *Parks Department Project Manager*
Nathan.Frazee@boston.gov

Hélène Guézennec, *Public Facilities Department Project Manager*
Helene.Guezennec@boston.gov

City of Boston Priorities

- **Expanding walkable access to parks**
- **Addressing equity**
- **Climate resilience**
- **Health**
- **Housing and community building**



Parks & Recreation Priorities

- **Accessible and available to all**
- **Diverse, balanced, and efficient mix of uses**
- **Meaningful and inclusive community engagement**
- **Adaptive and resilient landscapes**
- **Promote connections**

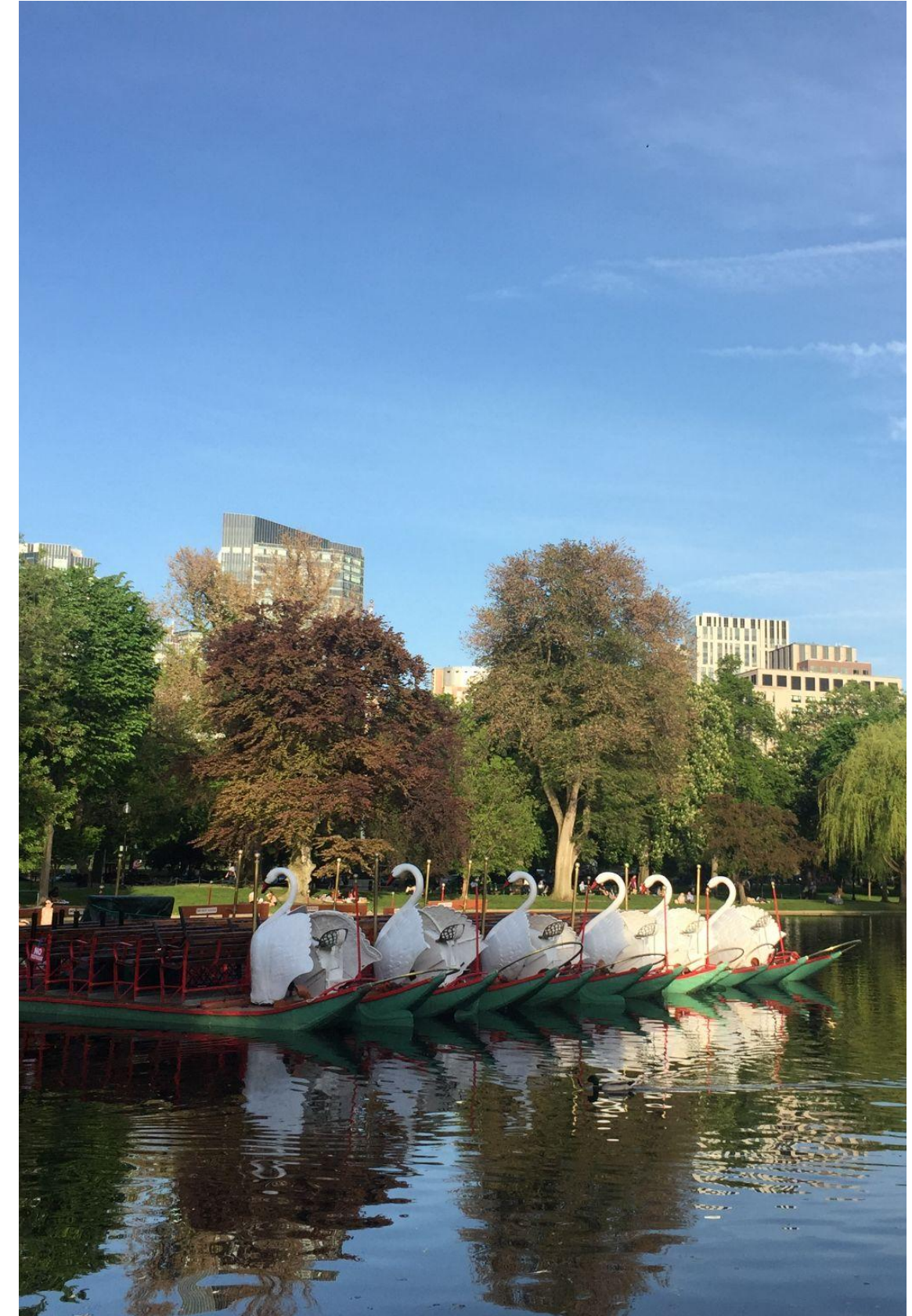


Context

Location



Public Garden



Site Plan

Public Garden:
24 acres / 1 Million Square Feet

Tool House:
642 Square Feet
(450 square feet dedicated to
Park maintenance uses)



History & Existing Conditions

1882 Hopkins Map



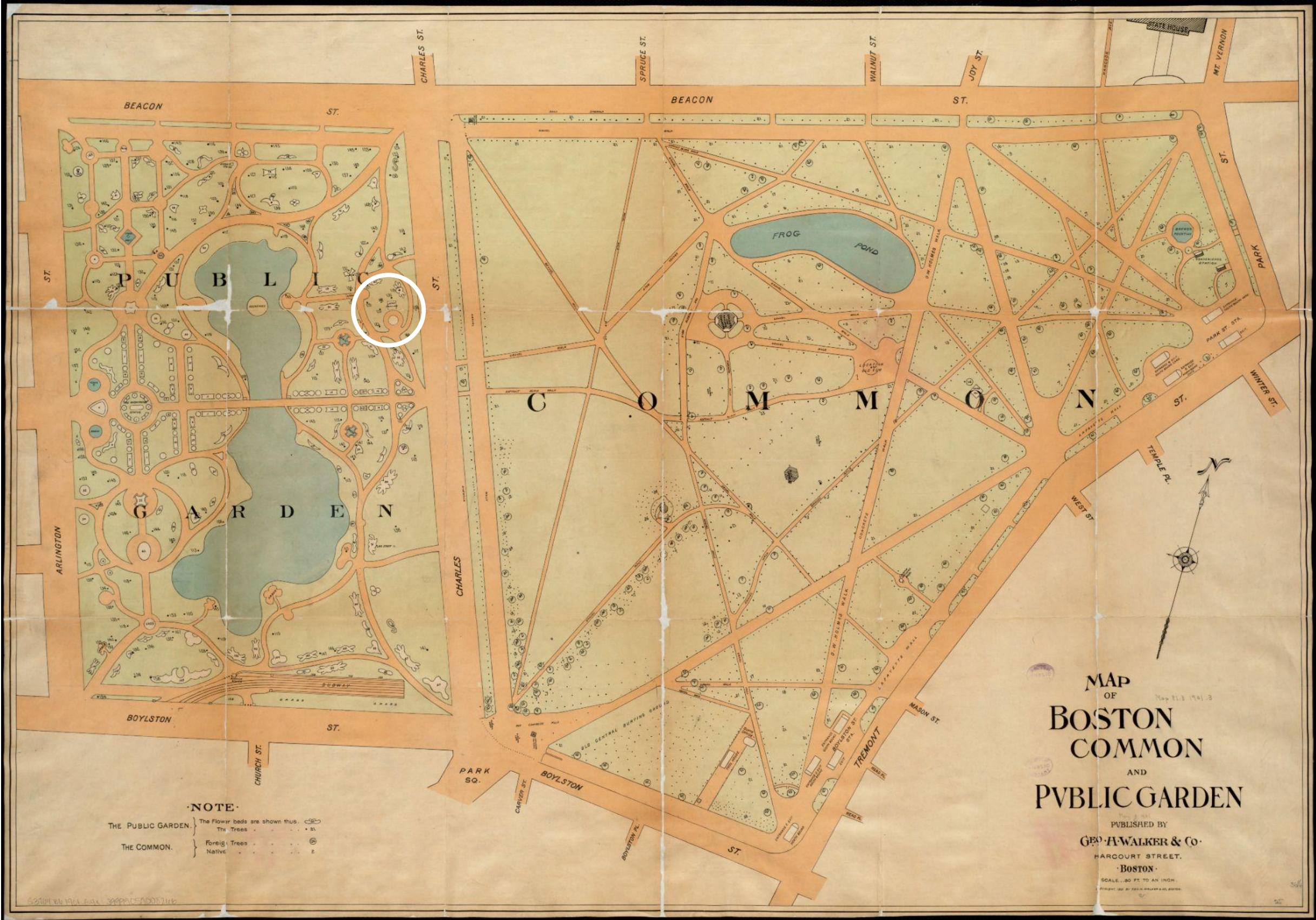
Credit: Leventhal Map & Education Center at the Boston Public Library

1883 GW Bromley Map



Credit: Leventhal Map & Education Center at the Boston Public Library

1901 Geo. H. Walker & Co. Map



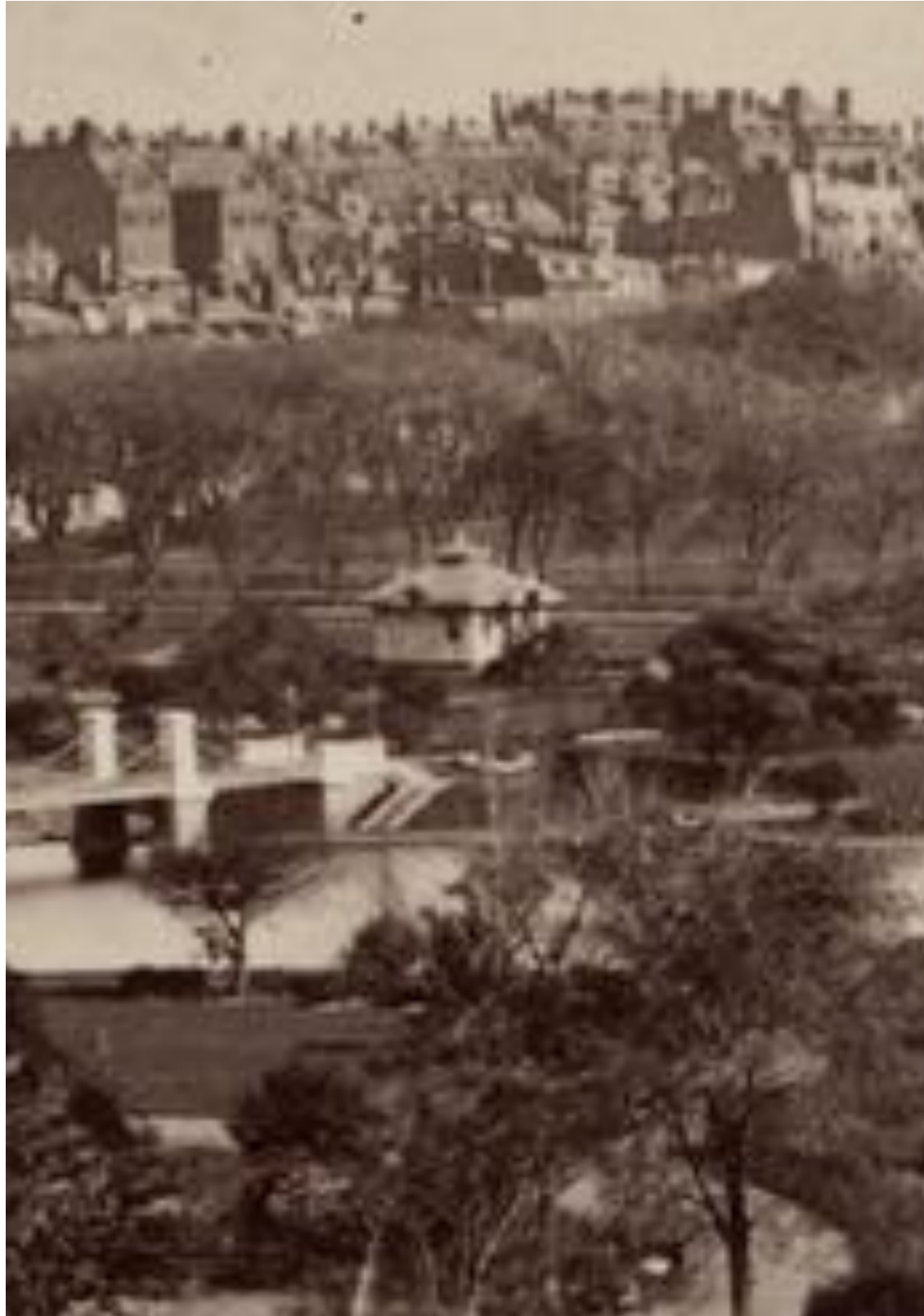
Credit: Leventhal Map & Education Center at the Boston Public Library

1890 View of the Public Garden Toward the State House



Credit: Boston Pictorial Archive

Evolution of the Building



1890

ENGINEERING REVIEW. April, 1912.

Fig. 15. Public Comfort Station at West Street in Boston
Common for Women Only

the citizens in demands made in a reasonable and dignified way.

It is to be regretted that funds have not been available for repairs and for new constructions. The house on Flagstaff Hill is in poor condition and inadequate for the demands upon it, and it is intended to locate an underground station at this place.

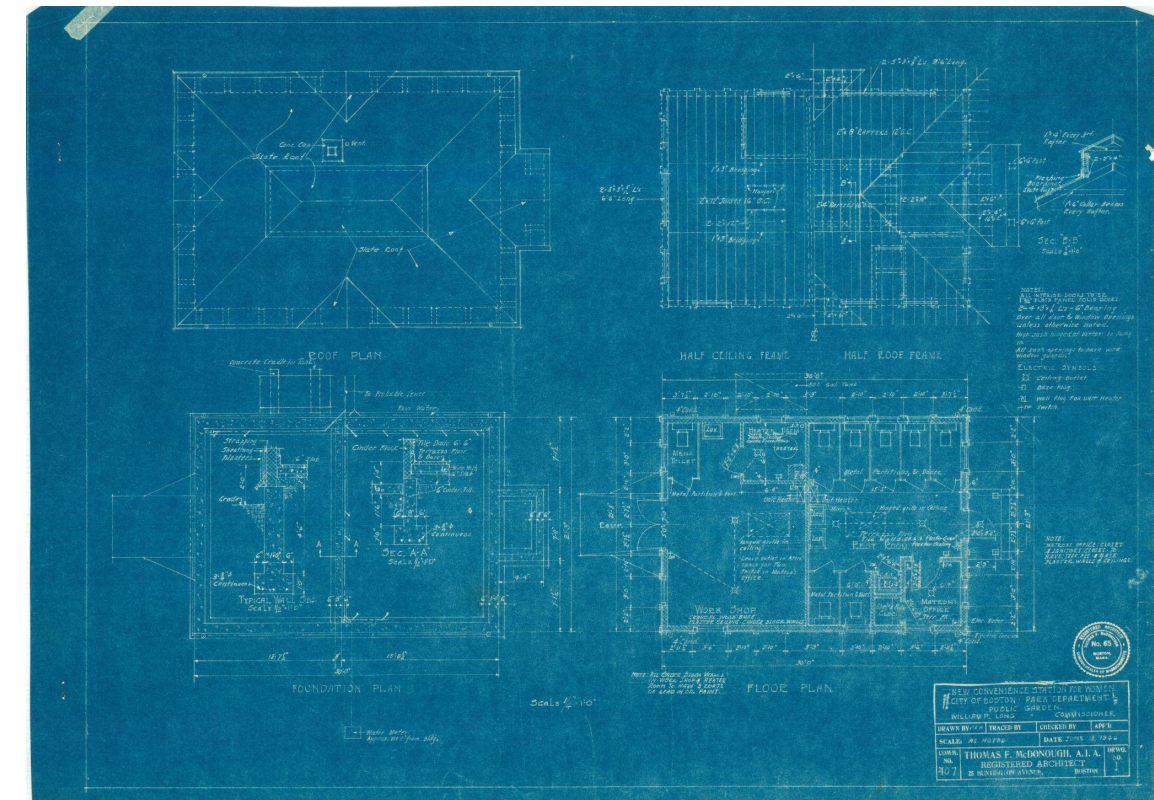
Under the present system the hours of use of the different establishments and the number of attendants required are given in the accompanying table:

Stations.	Hours.	Number of Attendants.
Men's underground, Common.....	24 hours	4
Urinals	Never closed	1
City Hall.....	8 A.M. till 4 P.M.	1
Richmond Street, for men only.....	7 A.M. till 4 P.M.	1
Merrimac Street.....	7 A.M. till 4 P.M.	1
Flagstaff Hill, for men only.....	7 A.M. till 4 P.M.	1
Women's underground, Common.....	7 A.M. till 11 P.M.	1
Cottage, Common, West St., for women only	7 A.M. till 4 P.M.	2
Cottage, Public Garden, for women only.....	7 A.M. till 4 P.M.	2

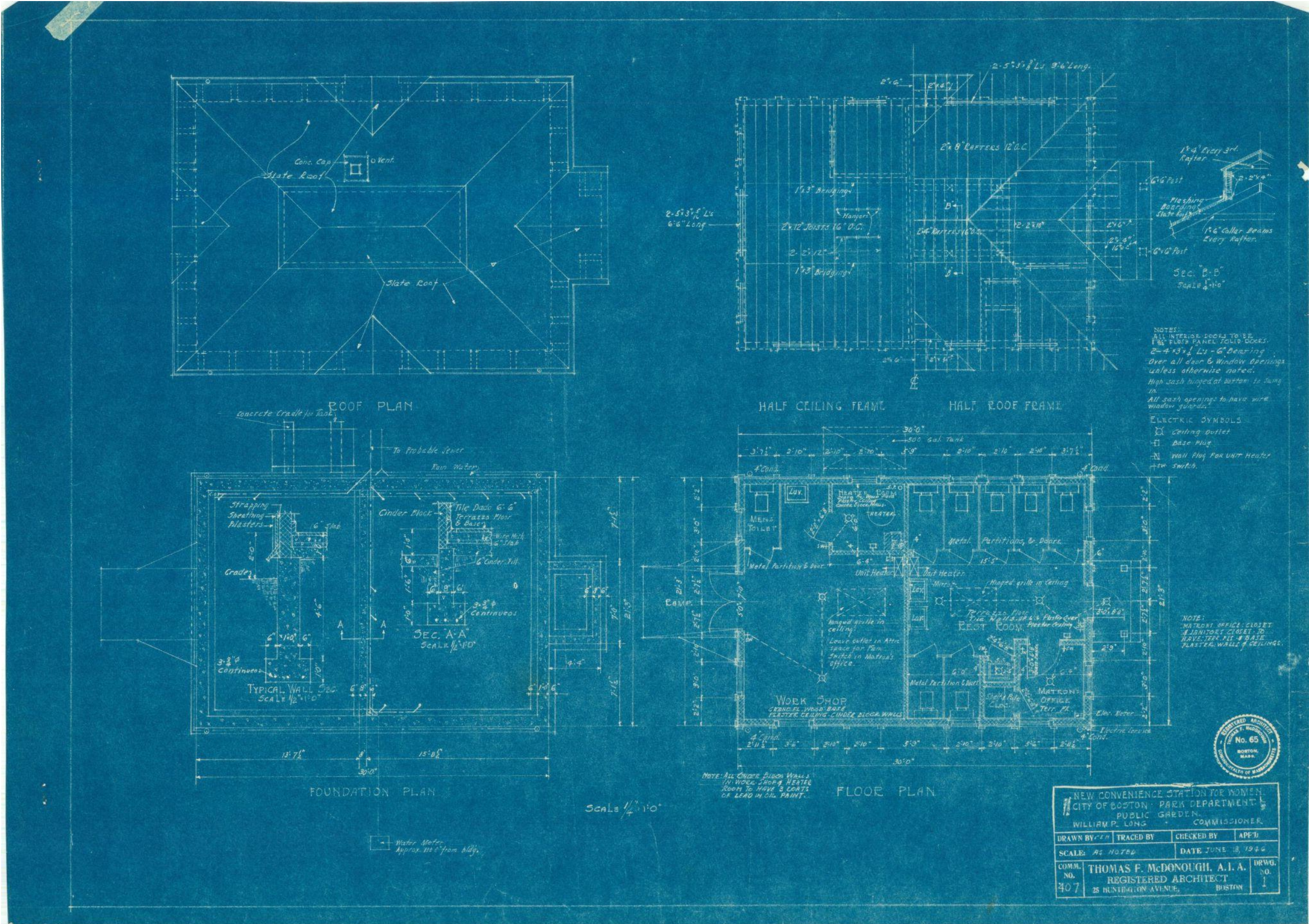
1912



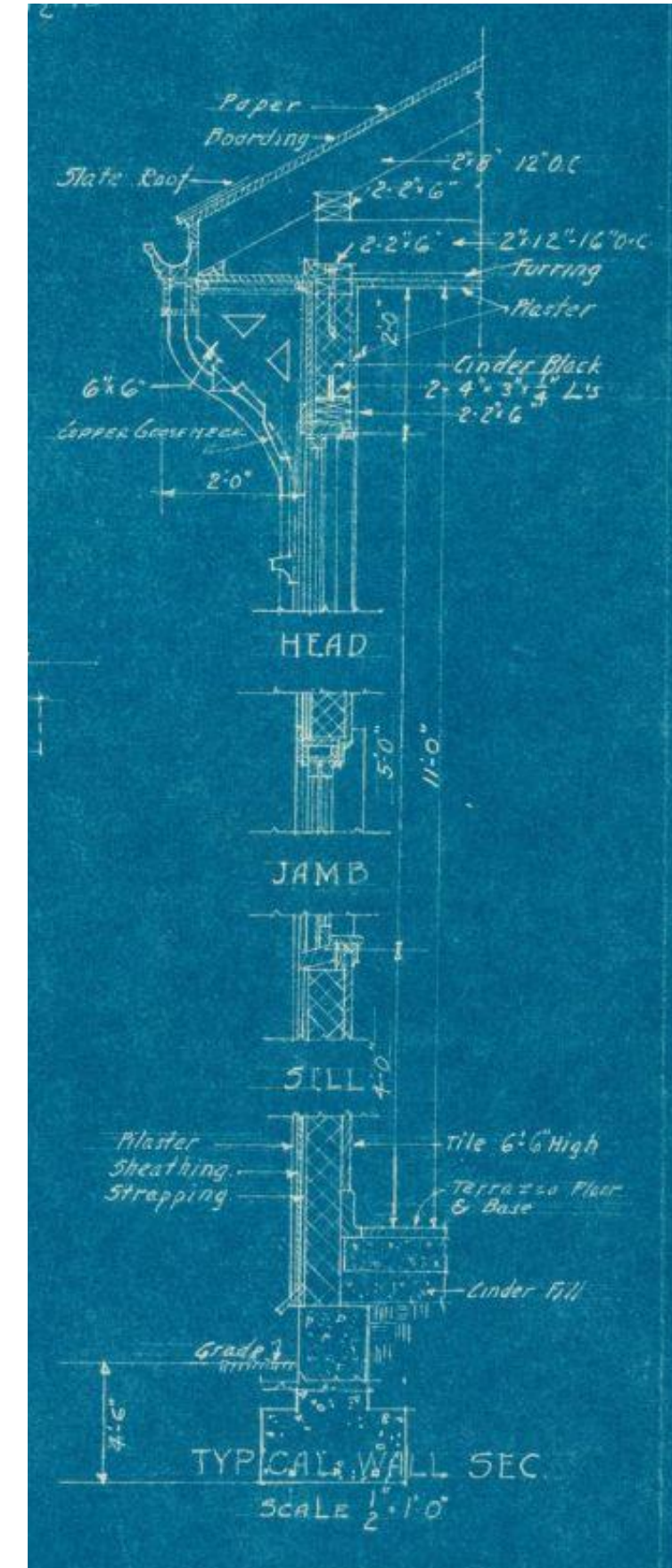
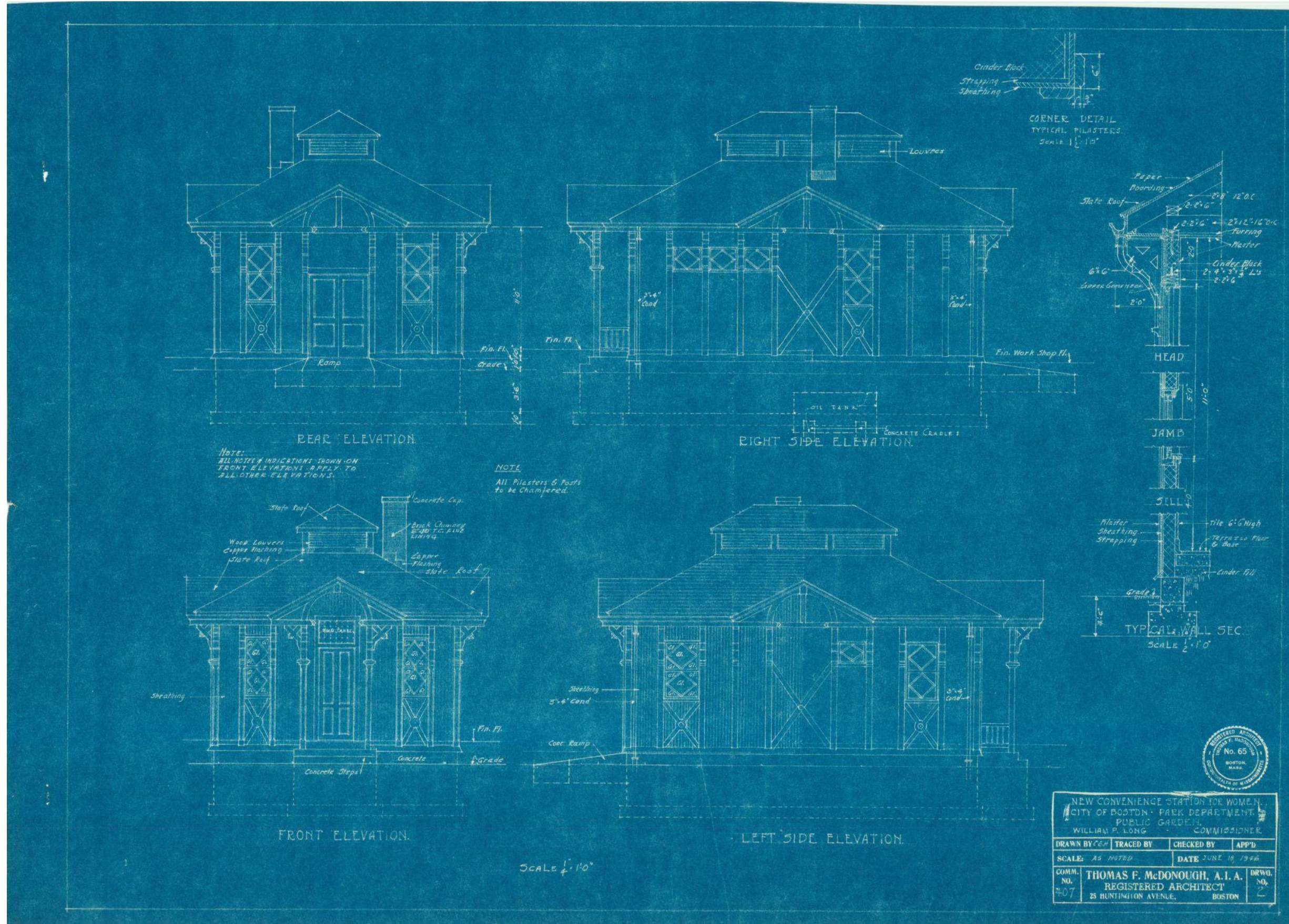
1946



1946 Design



1946 Design



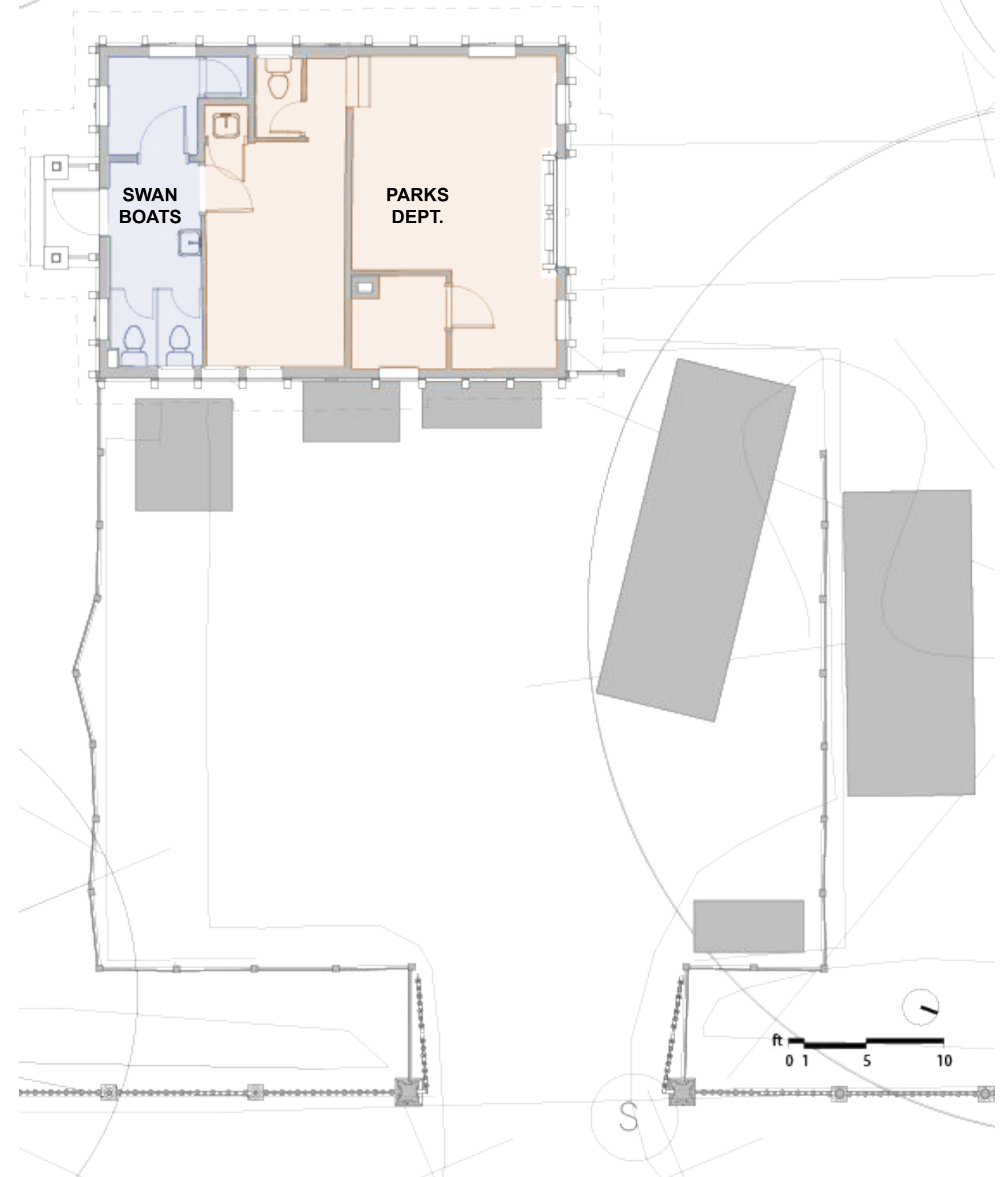
Current Condition



Function

Swan Boats

Parks Dept. Public Garden Maintenance



Function

Swan Boats 130 sf

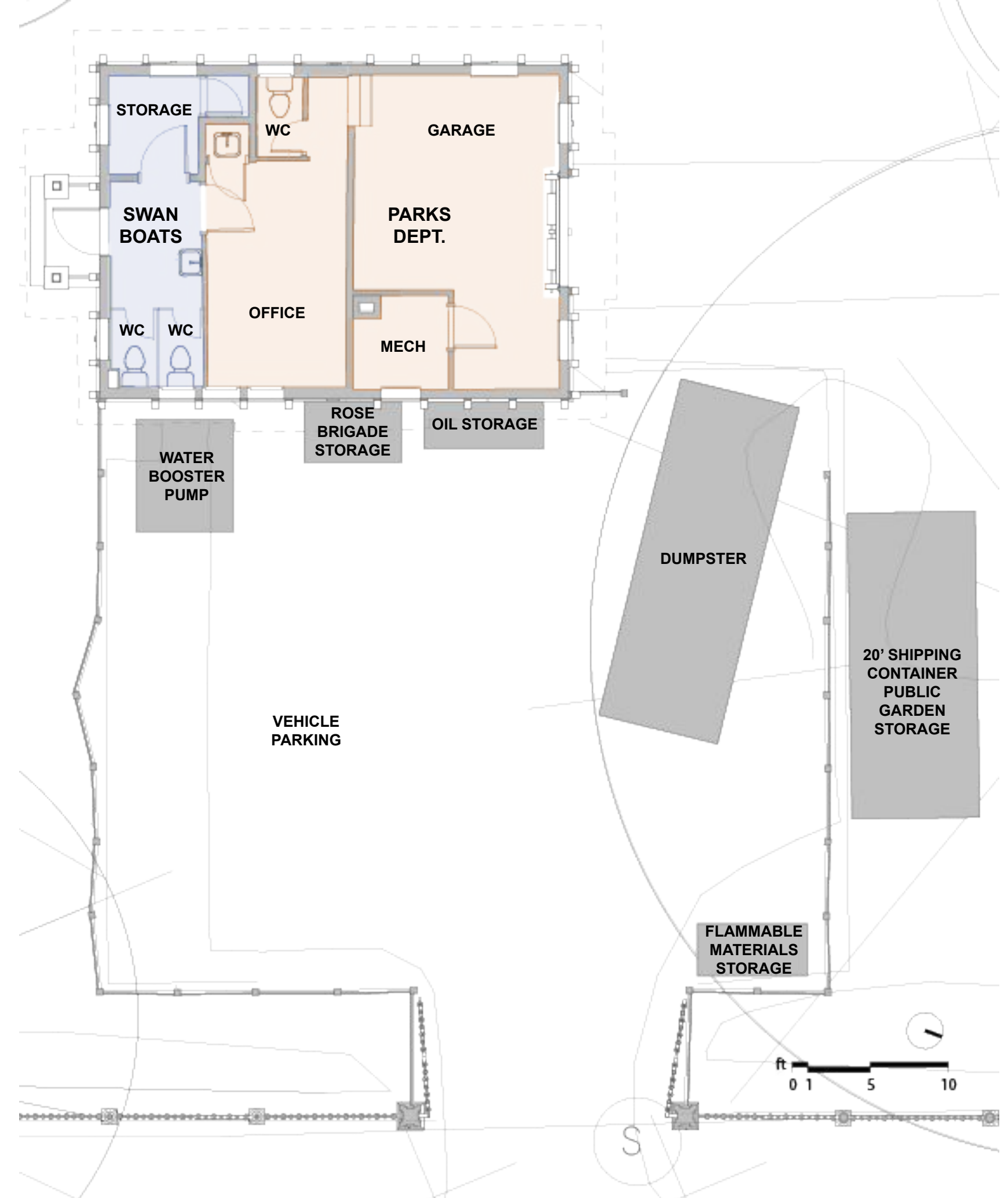
storage, WC, equipment, and other secure items

Parks Dept. Public Garden Maintenance 449 sf

Garage 229 sf: storage, maintenance tools and heavy supplies, large equipment for Public Garden maintenance often double parked or need to be moved to make way for other equipment

Office 163 sf: staff office, a couch for overnight stay in winter, a sink, office storage and supplies

Mechanical & WC 57 sf



Exterior



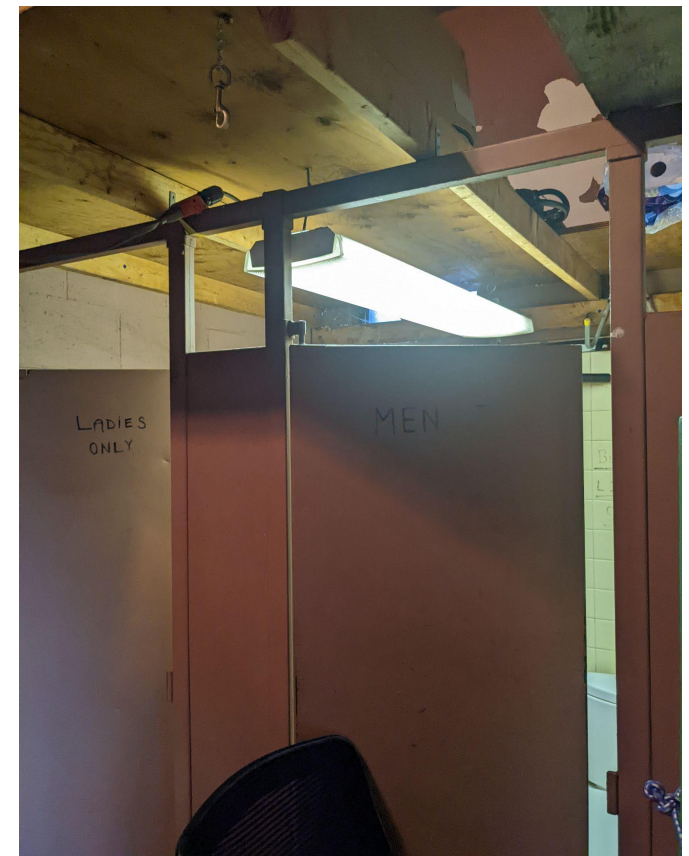
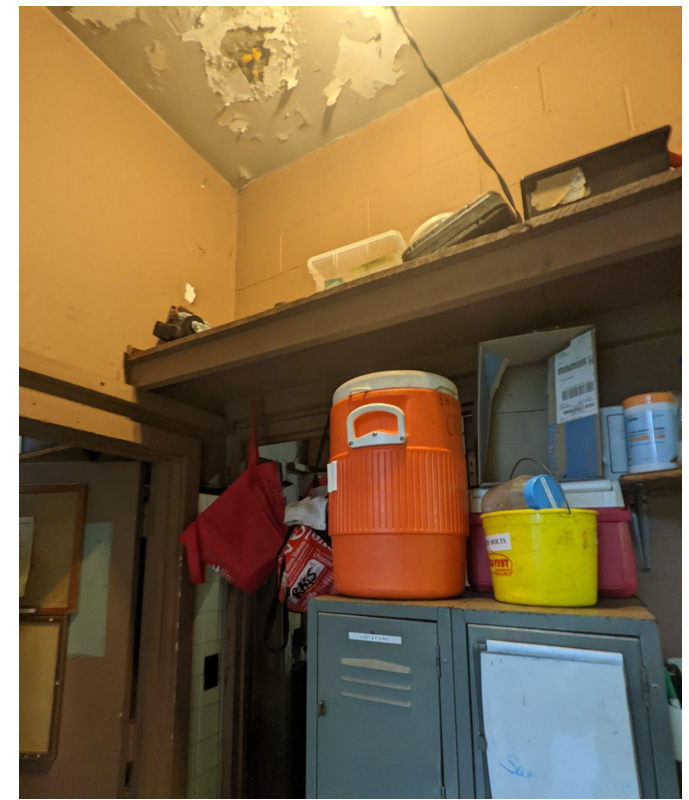
Exterior



Interior



Interior



Maintenance Yard



Shipping Container



Landscape



Landscape



Landscape



Landscape



Landscape

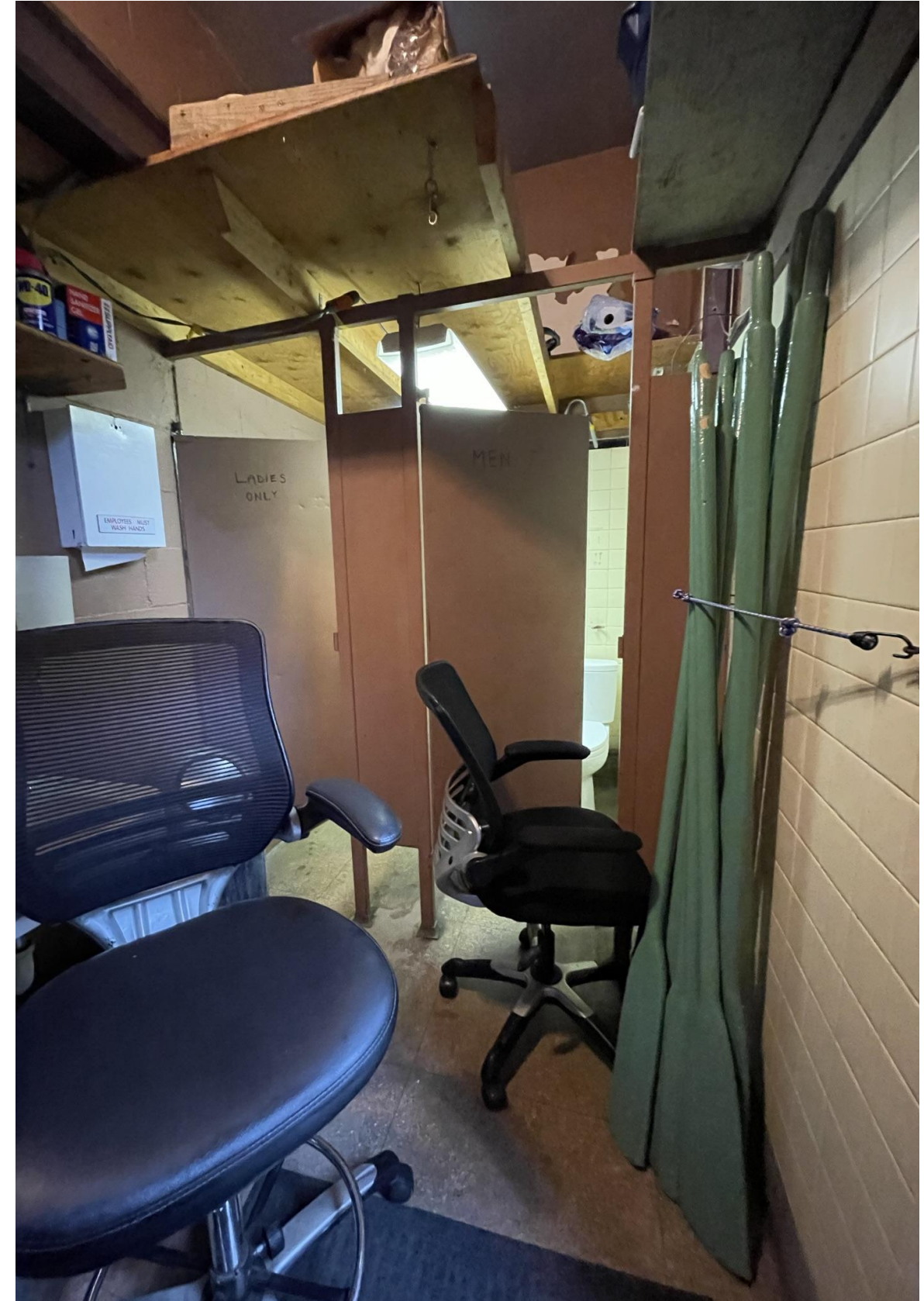


Opportunities

Improve Storage & Facilitate Maintenance



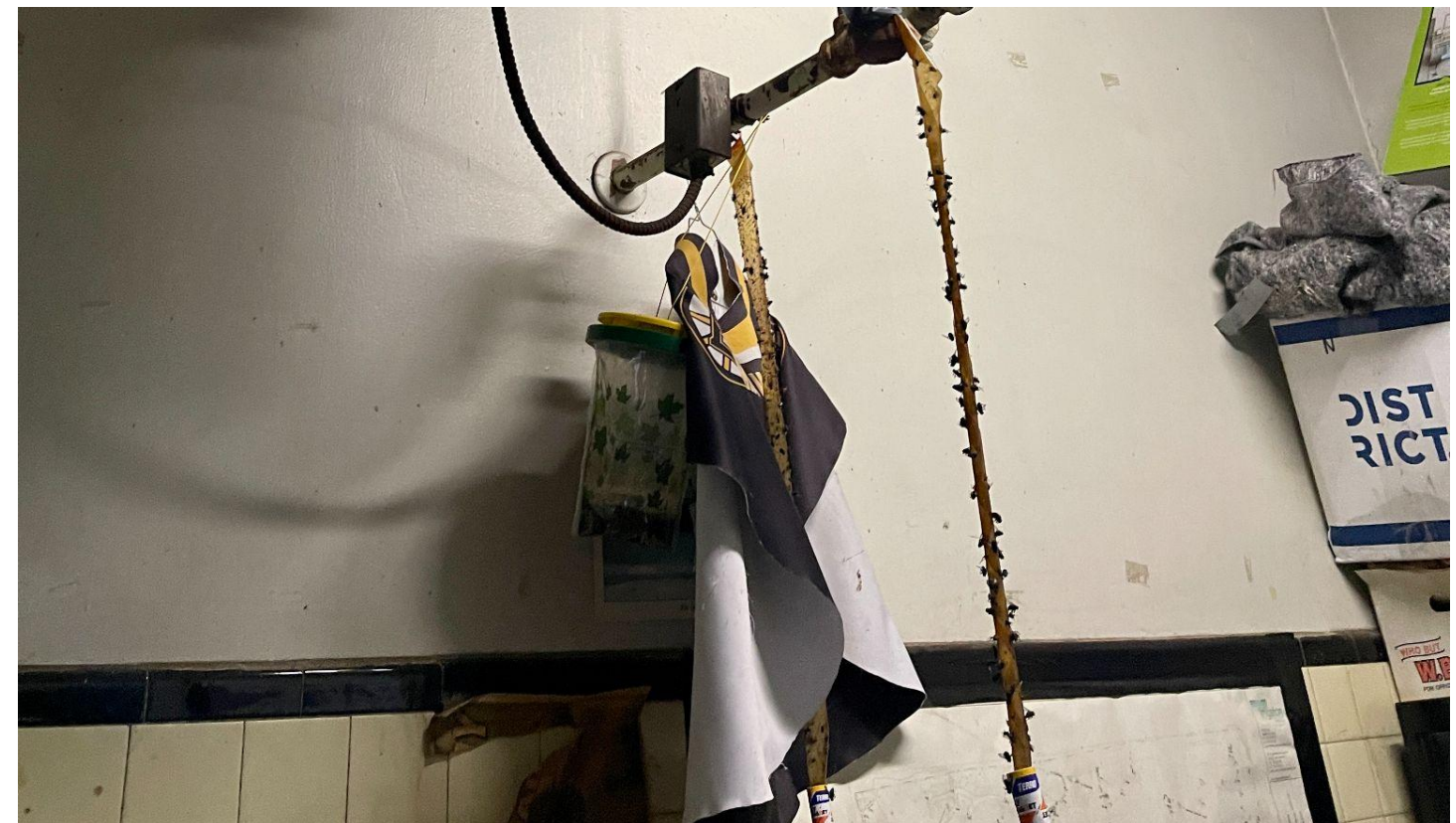
Improve Interior Spaces for Parks & Swan Boats



Provide Exterior Access for Parks Staff



Modernize Systems & Increase Energy Efficiency



Clarify Pathways



Protect Important Trees



Respect Historically Important Context



Maintain Sensitivity to Historic Nature of the Public Garden



Thank You!

For questions, maintenance requests, or concerns regarding any of our parks contact 311



Nathan Frazee, *Parks Department Project Manager*
Nathan.Frazee@boston.gov

Hélène Guézennec, *Public Facilities Department Project Manager*
Helene.Guezennec@boston.gov