

Improvements to
DUDLEY TOWN COMMON



PROJECT TEAM

NATHAN FRAZEE

Project Manager

nathan.fraze@boston.gov or 617-961-3167

CHRISTINE BRANDAO

Outreach Coordinator, External Affairs

christine.brandao@boston.gov or 617-961-3006

NAOMI COTTRELL

Principal, Crowley Cottrell

J.P. CHARBONEAU

Landscape Architect, Crowley Cottrell

TREVAN SIGNORELLI

Landscape Designer, Crowley Cottrell

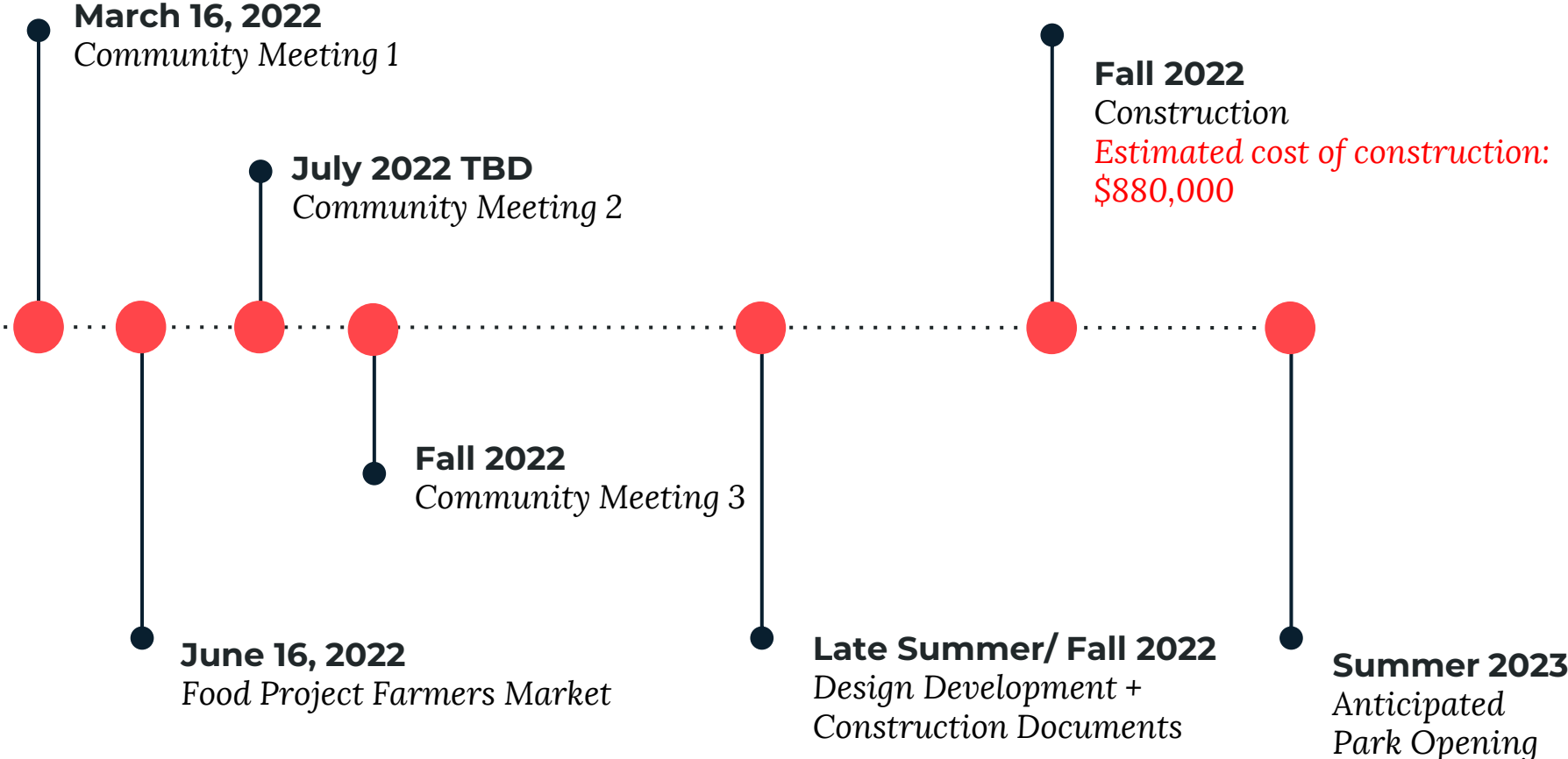
JEYSAUN GANT

Office of Neighborhood Services

Jeysaun.gant@boston.gov



PROJECT SCHEDULE & FUNDING





City of Boston
Priorities

Safety Guidelines+
Regulatory
Guidelines

**PARK
DESIGN**

Parks + Recreation
Goals

Community
Input

CITY OF BOSTON PRIORITIES

- **Expanding walkable access to parks**
- **Addressing equity**
- **Climate resilience**
- **Health**
- **Housing and community building**

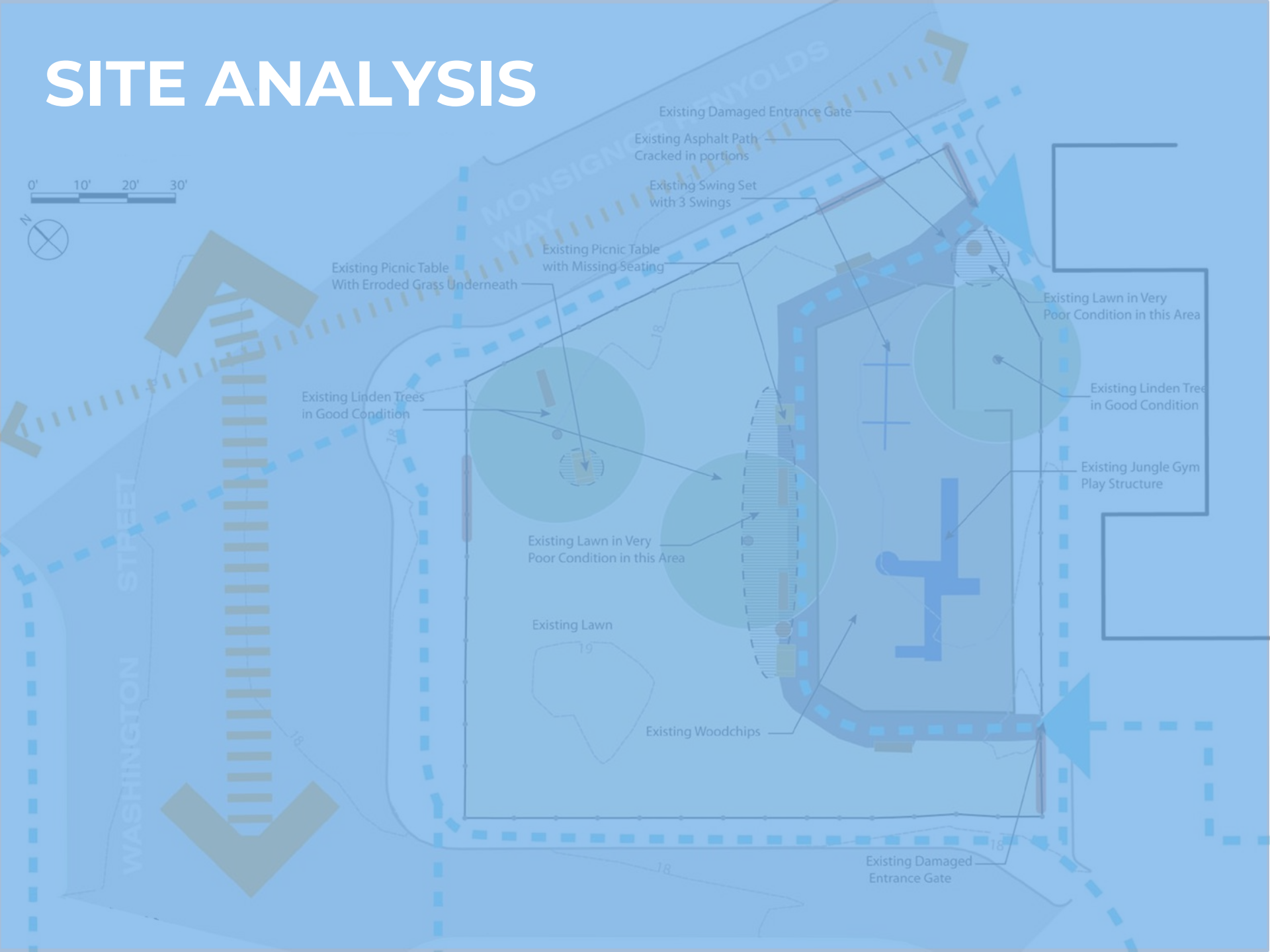


PARK & RECREATION GOALS

- **Accessible and available to all**
- **Diverse, balanced, and efficient mix of uses**
- **Meaningful and inclusive community engagement**
- **Adaptive and resilient landscapes**
- **Promote connections**



SITE ANALYSIS



CONTEXT

NUBIAN SQUARE

DUDLEY STREET

HAMPODEN STREET

MASSACHUSETTS AVE



NORTHERN SITE



SOUTHERN SITE

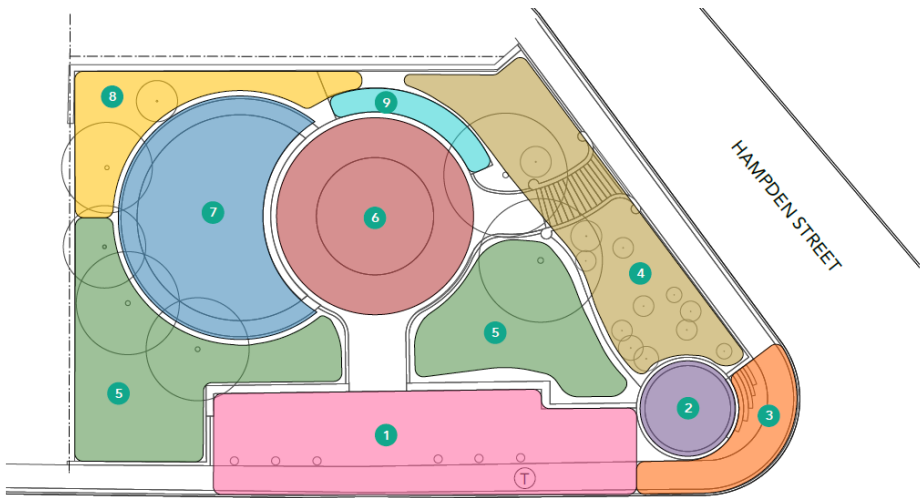
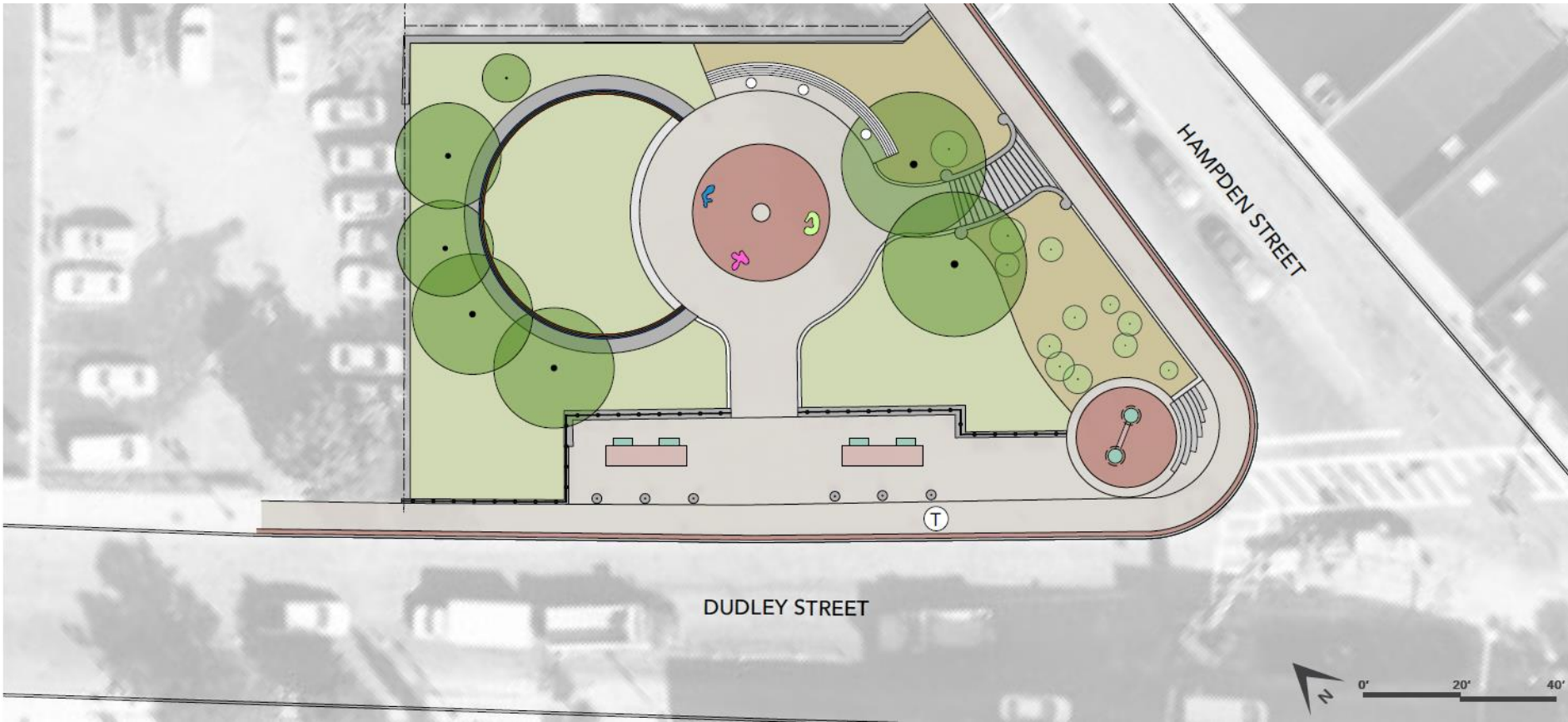
WARREN STREET

BLUE HILL AVENUE



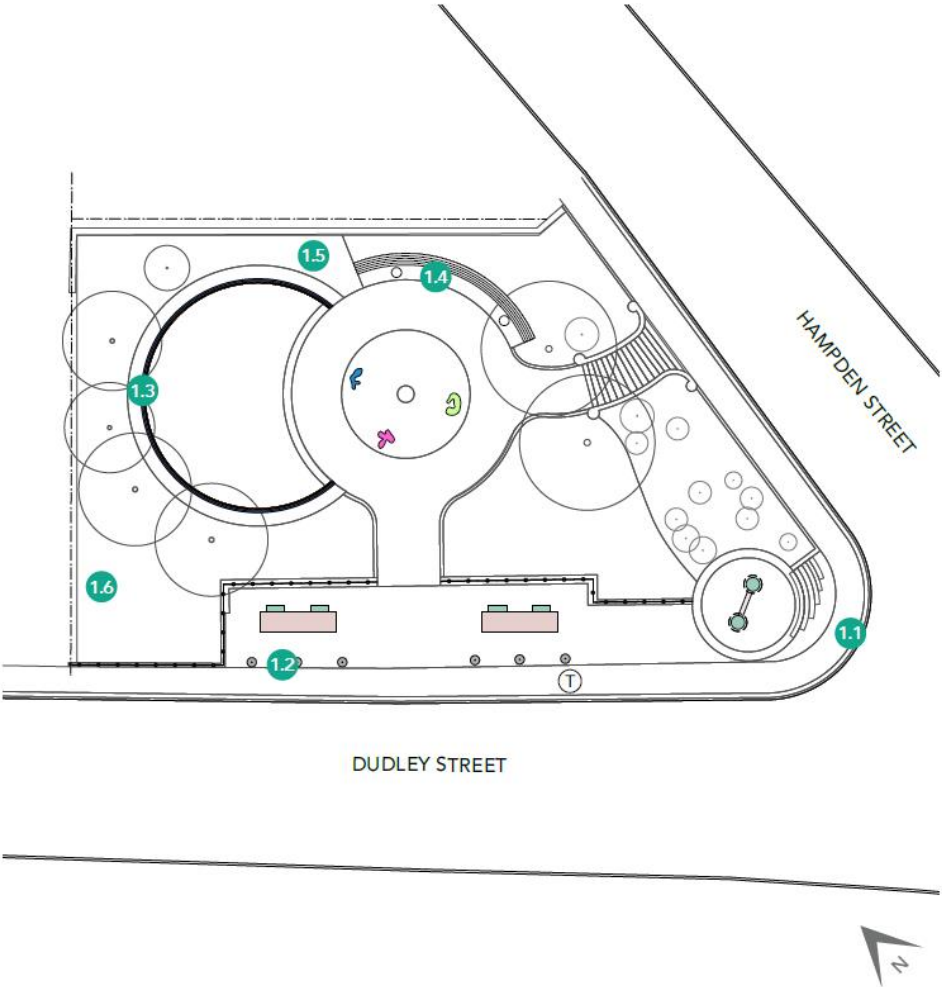
LAND USE + CONNECTIVITY





- 1 BUS STOP / STREET ZONE
- 2 MONUMENT / PARK SIGNAGE
- 3 STREET INTERSECTION ZONE
- 4 SLOPED PLANTING
- 5 LAWN AREAS
- 6 CENTRAL GATHERING AREA
- 7 SEAT WALL / COMMUNITY ART
- 8 UNDEFINED "BACK OF SITE" SPACE
- 9 GLOBE BENCH

Northern Site – Concerns



1.1 Cracking and heaving of concrete paving



1.2 Bollards and shade structure do not contribute to bus stop and restrict site lines in park. Cracking and heaving of concrete paving. Outdated style.



1.3 Damaged mosaic inlays on concrete seat wall



1.4 Obstructs view of Boston skyline

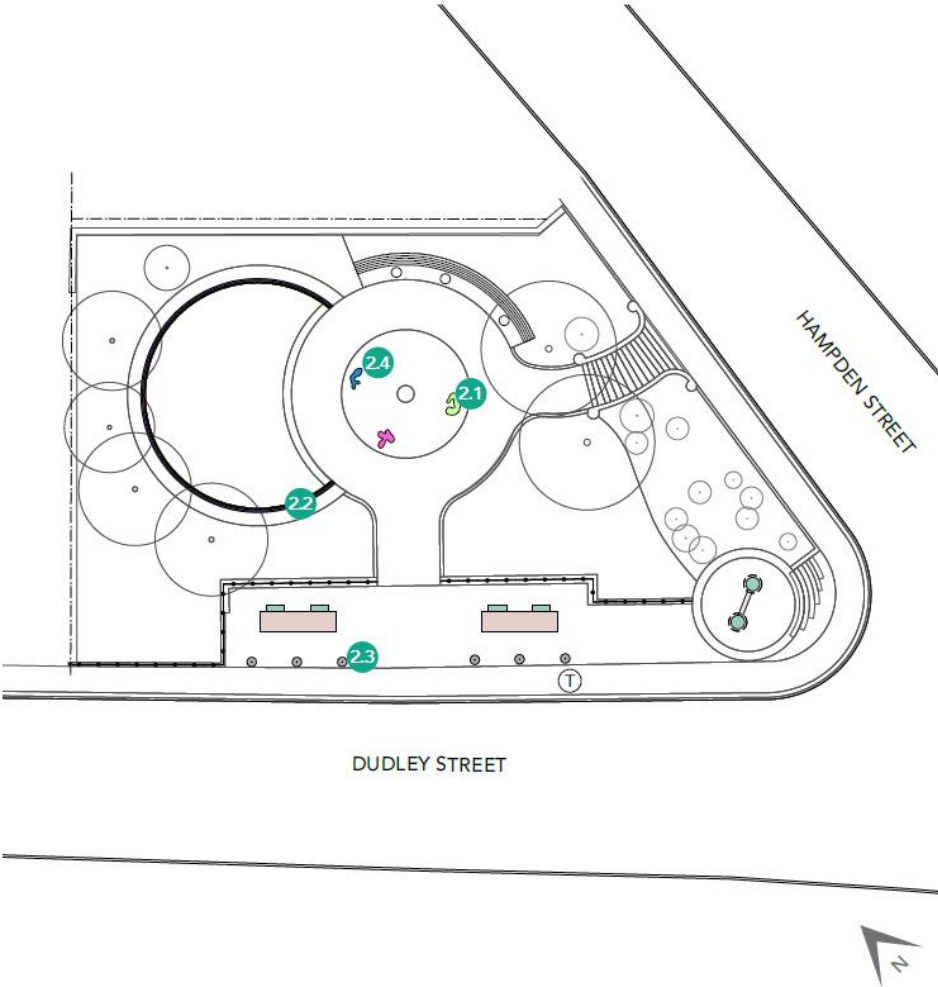


1.5 Overgrown and unmanaged vegetation along back retaining wall and fence



1.6 Cut-back vegetation

Northern Site – Positive Features



DECLARATION OF COMMUNITY RIGHTS: We the residents of the Dudley area have the right to participate in all planning, programs, and policies affecting our lives; celebrate our cultural diversity through the arts; quality, affordable, accessible and culturally sensitive health care; control the development of open space; a hazard free environment; enjoy a full, spiritual and religious life; education and training to meet our potential; share in the jobs and prosperity created by economic development; quality and affordable housing; affordable child care responsive to our needs; safe and accessible public transportation; quality goods and services in our area...



2.1 Mosaic inlay on decorative benches



2.2 Seatwall with mosaic inlay stating the "Declaration of Community Rights"

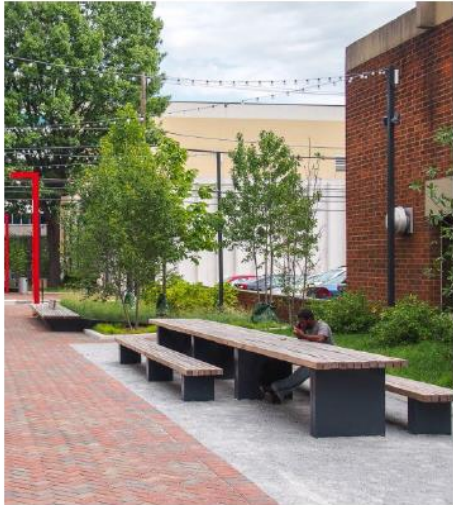


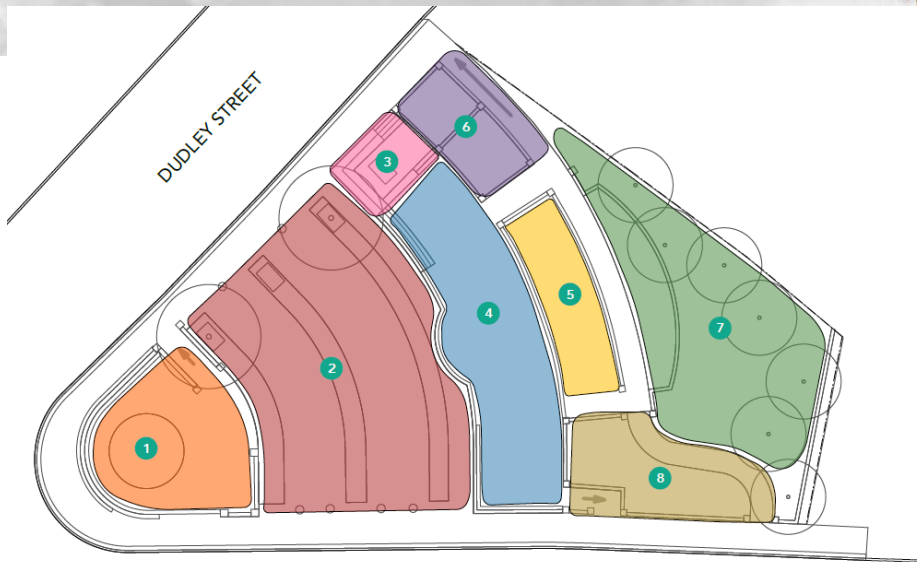
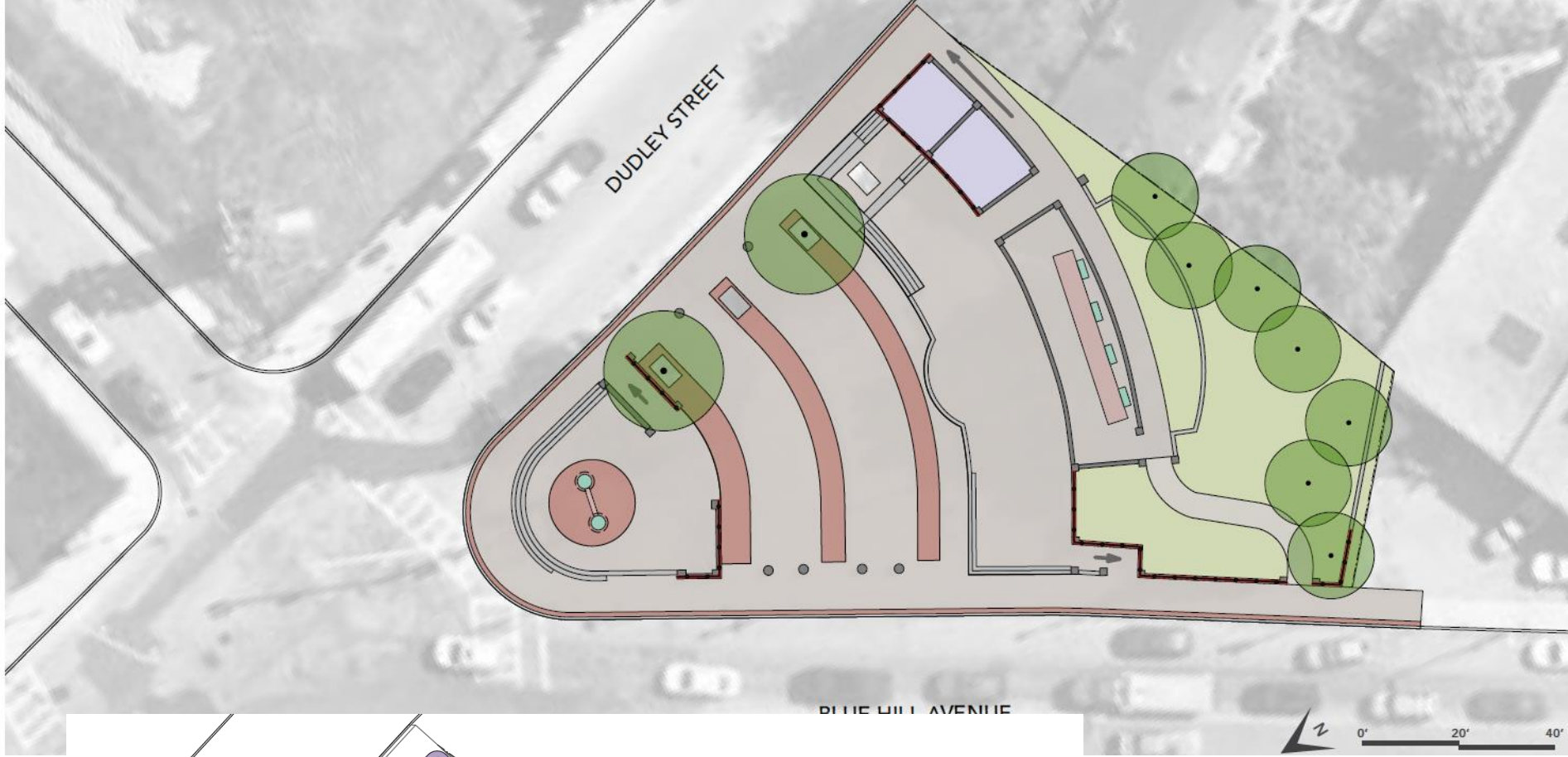
2.3 Mosaic inlays on concrete bollards



2.4 Mosaic inlay on decorative benches

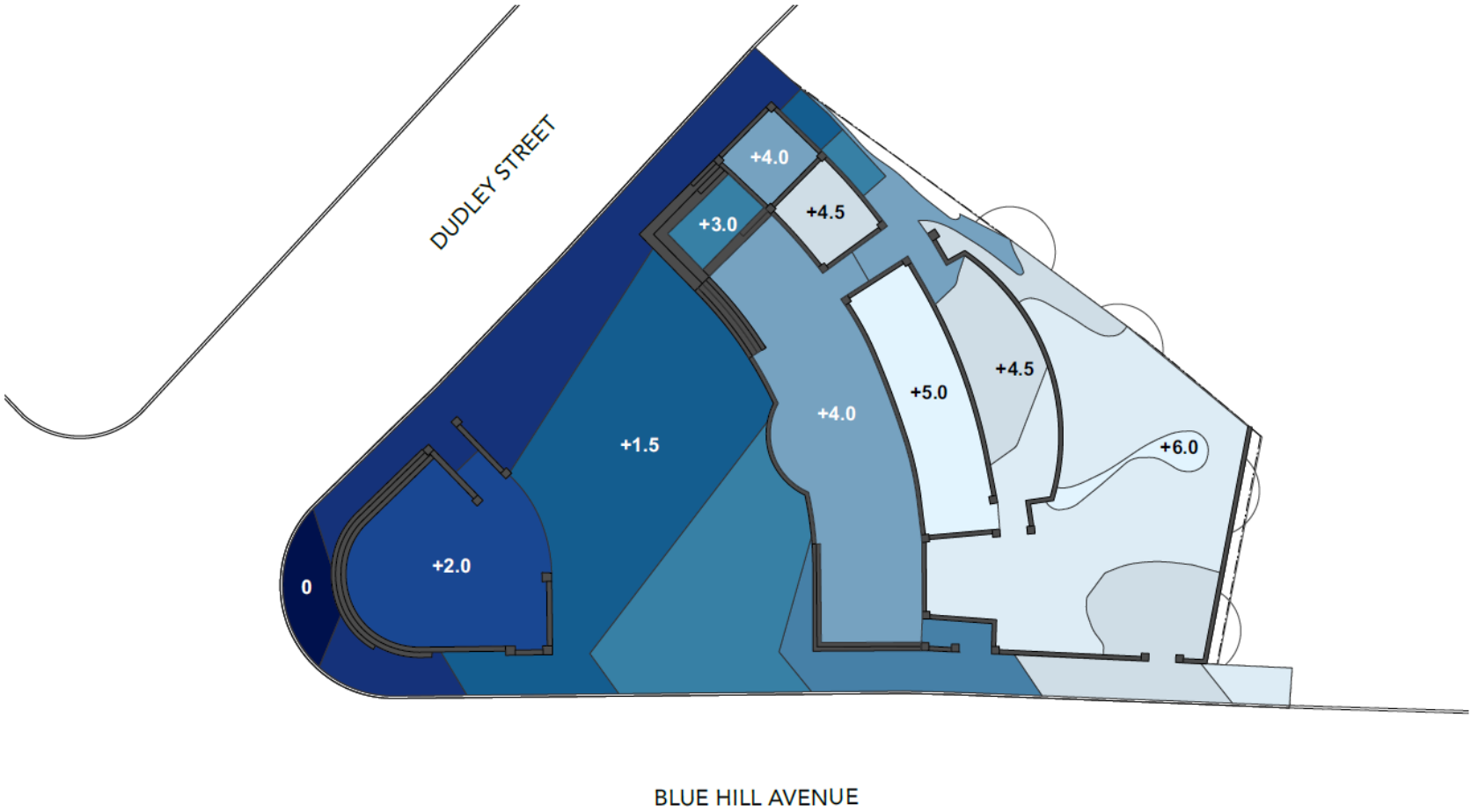
Northern Site – Precedents



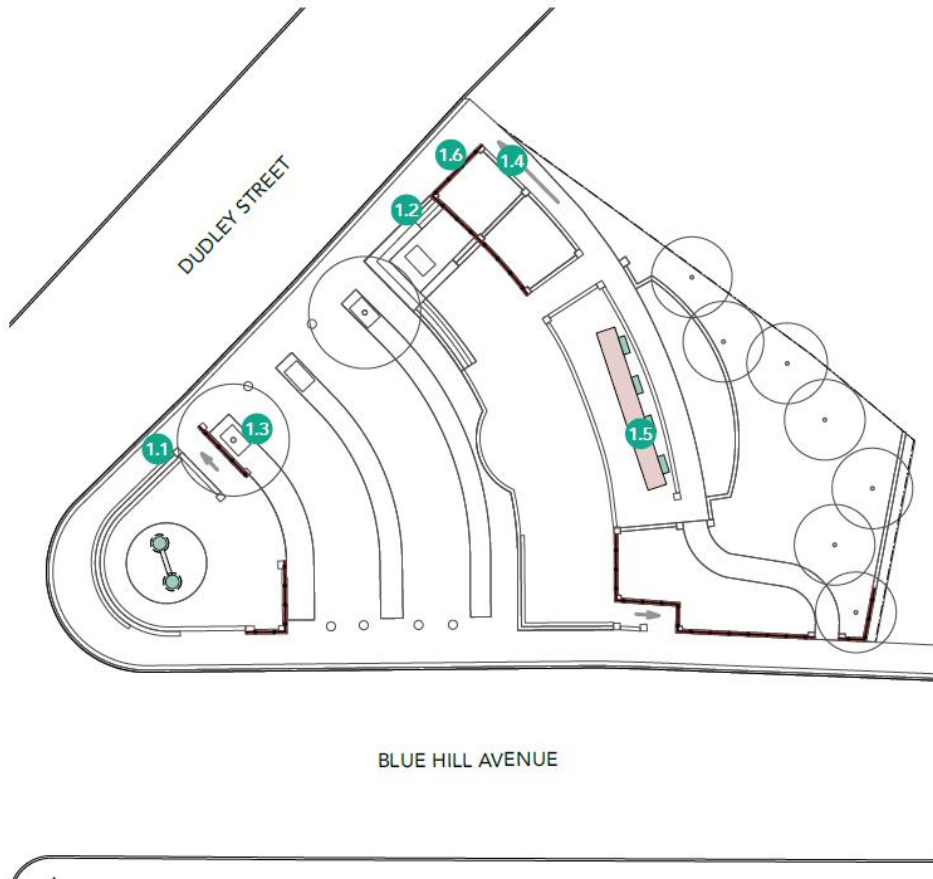


- 1 MONUMENT / CLOCK TOWER
- 2 PLAZA
- 3 STREET-SIDE SEATING AREA
- 4 STAGE PLATFORM
- 5 BACKDROP PLATFORM
- 6 CONCRETE PLANTERS
- 7 TREE GROVE
- 8 SIDE ENTRY

Southern Site – Elevation



Southern Site – Concerns



1.1 Narrow and restricted pedestrian circulation along Dudley Street



1.2 Complicated edge and access into park at Dudley St - multiple level steps, railing, seatwalls, ramp. Tree was removed and not replaced.



1.3 Tree grate not adjusted for tree growth. Tree is root-bound and heaving paving and grate



1.4 Path feels remote; unmaintained and overgrown plantings

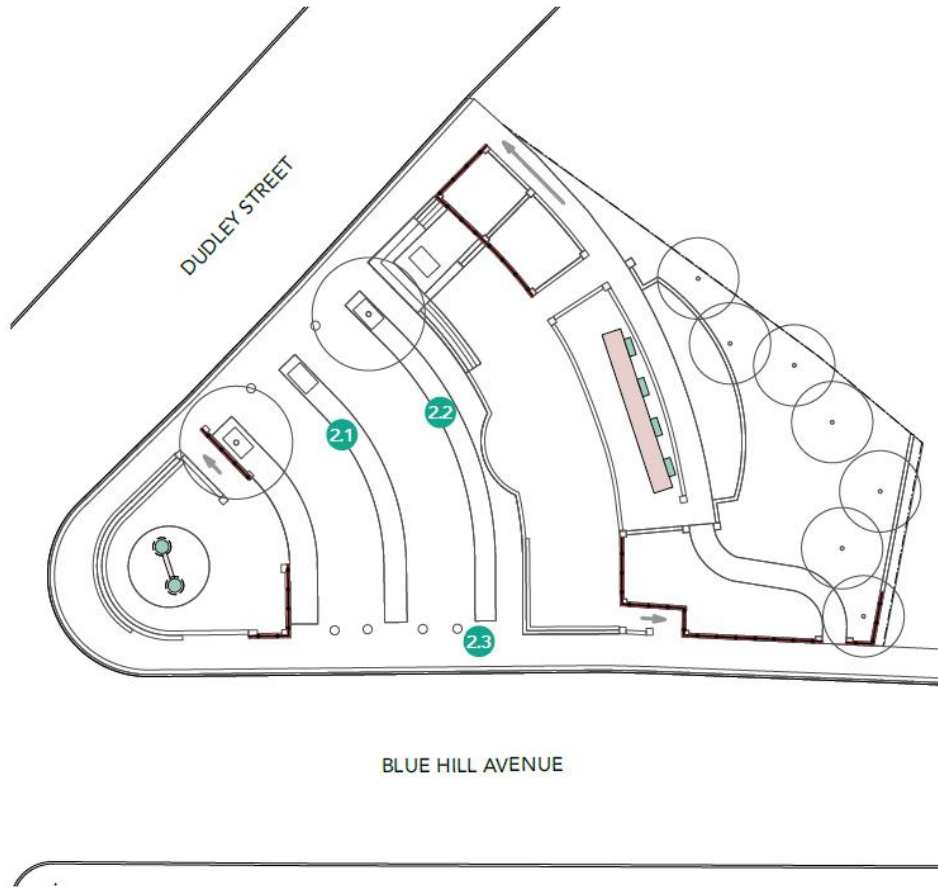


1.5 Fading paint at stage back-drop, outdated style, non-functioning lights



1.6 Outdated style, fading paint at decorative metal fence

Southern Site – Positive Features



2.1 Brick etchings throughout site



2.2 Brick etchings throughout site



2.3 Mosaic inlays on concrete bollards

Southern Site – Precedents





LISTENING & DISCUSSION

Help us build great parks.
Let us know what matters to you.

THANK YOU!

FARMERS MARKET June 16, 2022

boston.gov/dudley-common

For questions, maintenance requests or
concerns regarding any of our
parks contact 311

