

*Improvements to*  
**DUDLEY TOWN COMMON**



# MEETING RECORDING



The Boston Parks and Recreation Department will be recording the meeting and posting to our project webpage for those who are unable to attend the Zoom meeting live.

It is possible that participants may also be recording the meeting with their phones cameras or other devices. If you do not wish to be recorded during this meeting, please keep your microphone muted and camera off.

Please share with your neighbors and friends, [boston.gov/dudley-common](https://boston.gov/dudley-common).

# VIRTUAL MEETING ETIQUETTE

We want to ensure this conversation is a pleasant experience for all and that all community members/stakeholders are comfortable sharing their comments, questions and feedback.

Please be respectful and mindful of each other's time when asking questions/ providing comments, so that all attendees are able to participate in the meeting.

Keep questions/ comments project-specific and not personal to yield solution-driven discussion.

Please wait until all attendees have had the opportunity to ask a question/ provide a comment before providing additional questions/ comments.

You can always set up a conversation with Nathan Frazee, [Nathan.Frazee@boston.gov](mailto:Nathan.Frazee@boston.gov), to further discuss the project or process.

# ZOOM TIPS

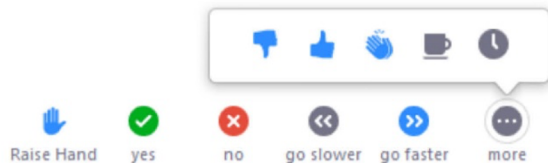
Here is how you can participate during the question and answer part of the presentation.

## DURING THE PRESENTATION:



### VIA WEB:

Turn video on / off.



To use these non-verbal options click on participants (bottom of screen); these options will pop up in side bar.

## DURING THE Q&A:



### JOINING VIA PHONE?

Use \*9 to raise hand to ask for audio / video permission to ask questions or provide comments.



### VIA WEB:

Chat to ask questions / comments or provide responses to poll questions



Raise hand to ask for audio / video permission to ask questions or provide comments.

# AGENDA

---

1

**PROJECT TEAM INTRODUCTION**

---

2

**PROJECT SCHEDULE & FUNDING**

---

3

**PRESENTATION**

---

4

**LISTENING & DISCUSSION**

---

5

**CLOSING REMARKS & NEXT STEPS**

---

# PROJECT TEAM

---

## **NATHAN FRAZEE**

Project Manager

[nathan.fraze@boston.gov](mailto:nathan.fraze@boston.gov) or 617-961-3167

## **CHRISTINE BRANDAO**

Outreach Coordinator, External Affairs

[christine.brandao@boston.gov](mailto:christine.brandao@boston.gov) or 617-961-3006

## **NAOMI COTTRELL**

Principal, Crowley Cottrell

## **J.P. CHARBONEAU**

Landscape Architect, Crowley Cottrell

## **TREVON SIGNORELLI**

Landscape Designer, Crowley Cottrell

## **JEYSAUN GANT**

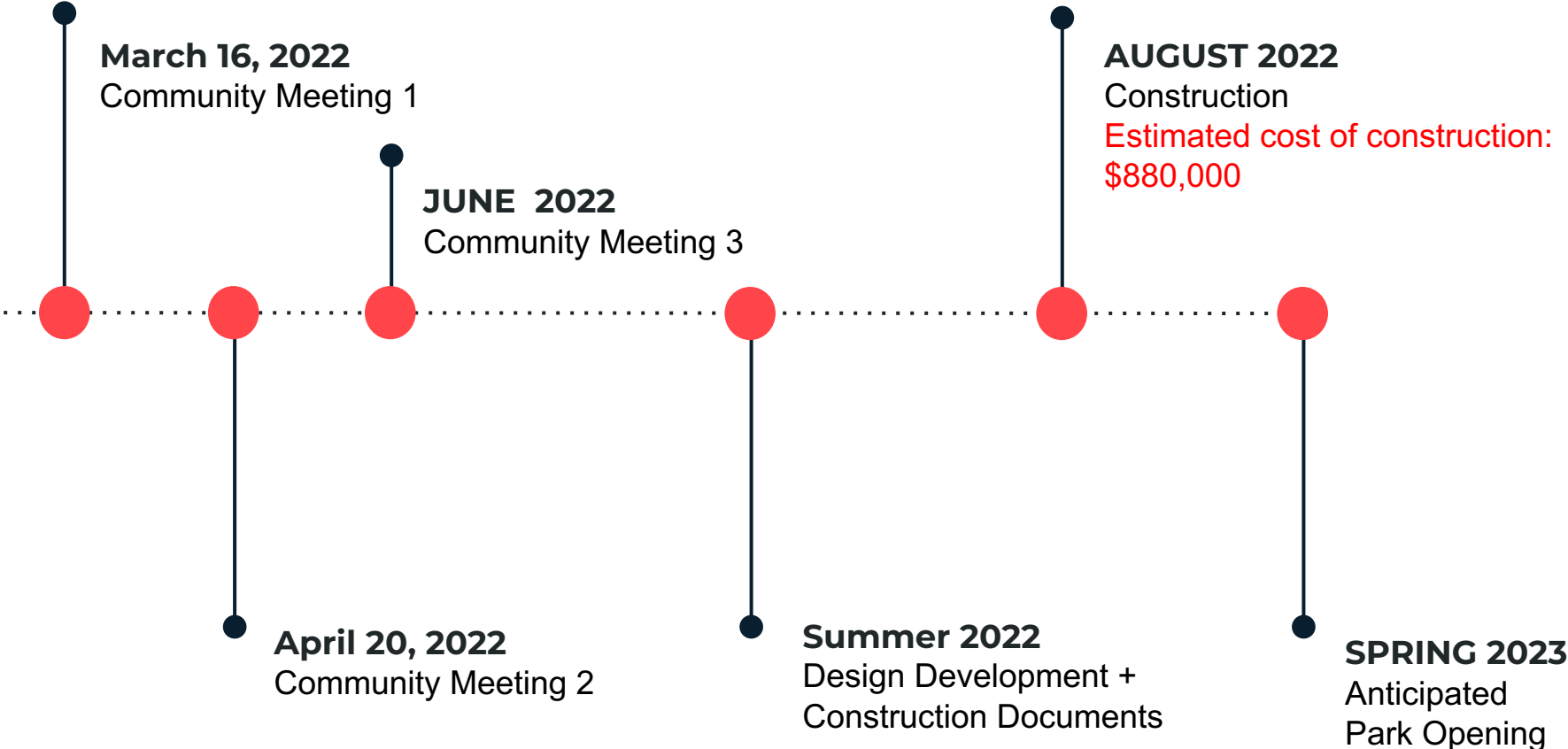
Office of Neighborhood Services

[Jeysaun.gant@boston.gov](mailto:Jeysaun.gant@boston.gov)



# PROJECT SCHEDULE & FUNDING

---





City of Boston  
Priorities

Safety Guidelines+  
Regulatory  
Guidelines

**PARK  
DESIGN**

Parks + Recreation  
Goals

Community  
Input



# CITY OF BOSTON PRIORITIES

---

- **Expanding walkable access to parks**
- **Addressing equity**
- **Climate resilience**
- **Health**
- **Housing and community building**



# PARK & RECREATION GOALS

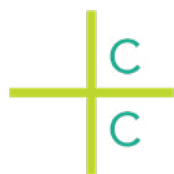
---

- Accessible and available to all
- Diverse, balanced, and efficient mix of uses
- Meaningful and inclusive community engagement
- Adaptive and resilient landscapes
- Promote connections

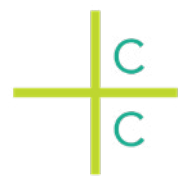


# DUDLEY TOWN COMMON

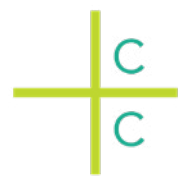
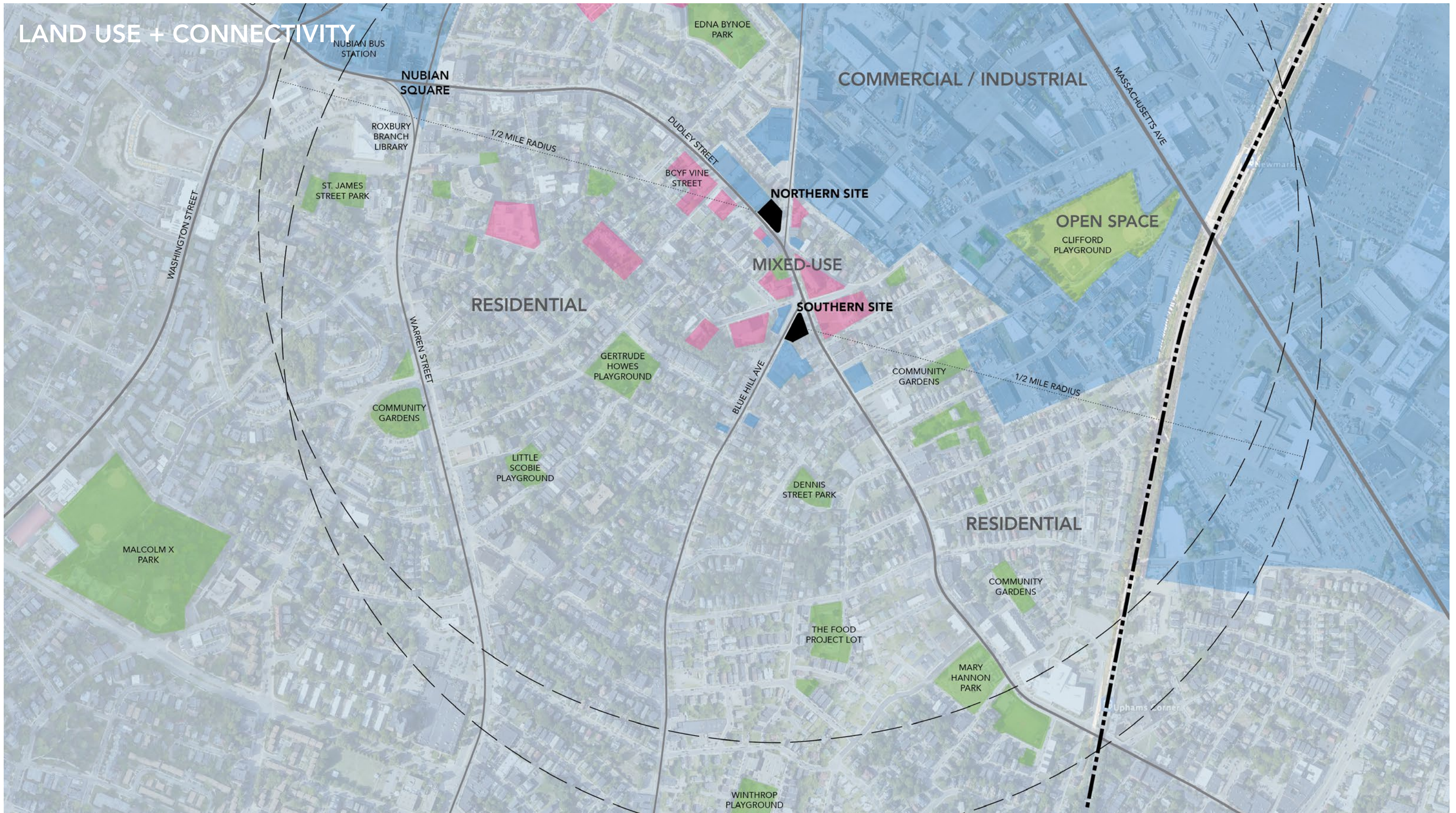
## SITE ANALYSIS



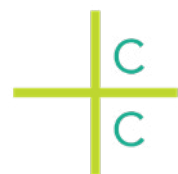
# CONTEXT



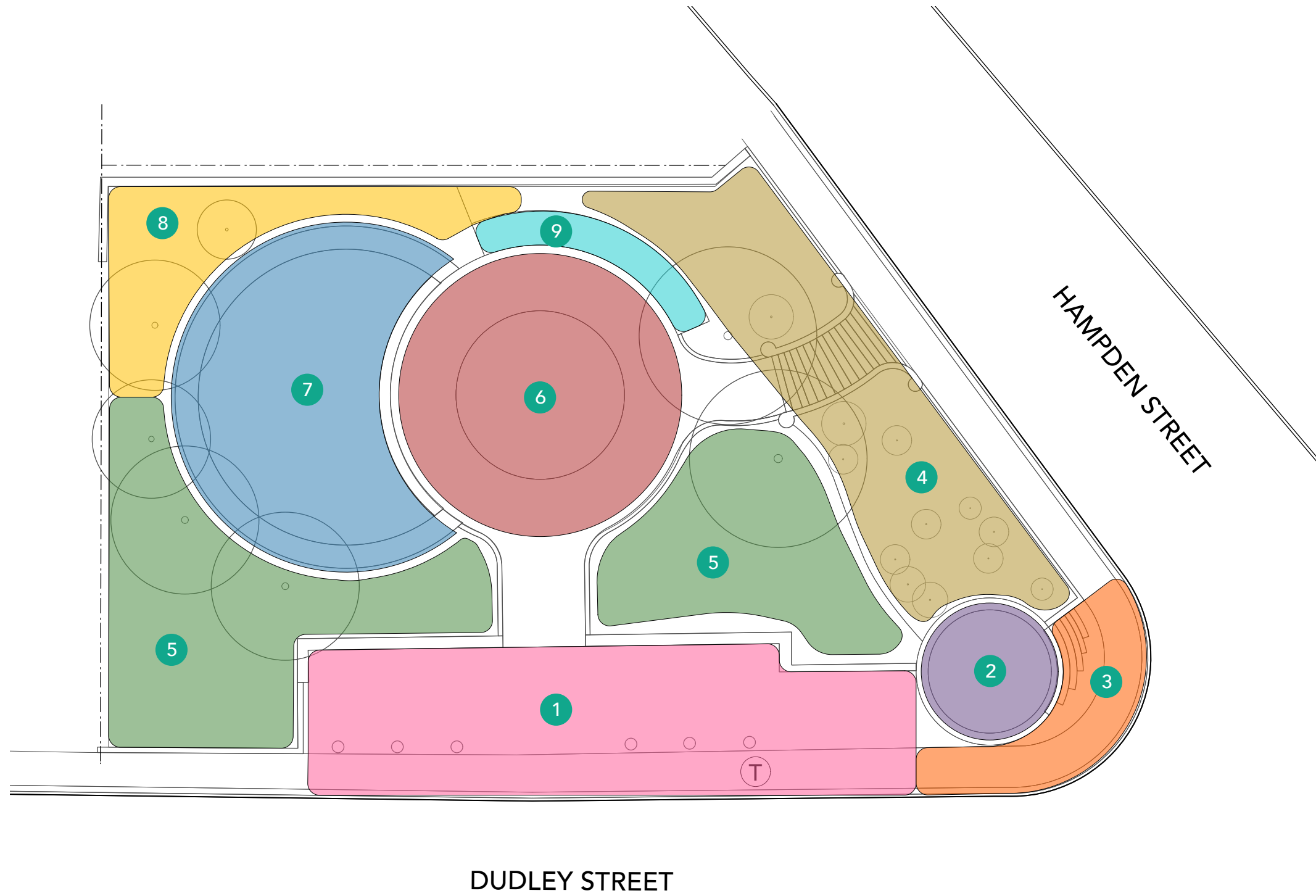
# LAND USE + CONNECTIVITY



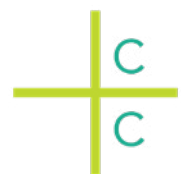
# Northern Site



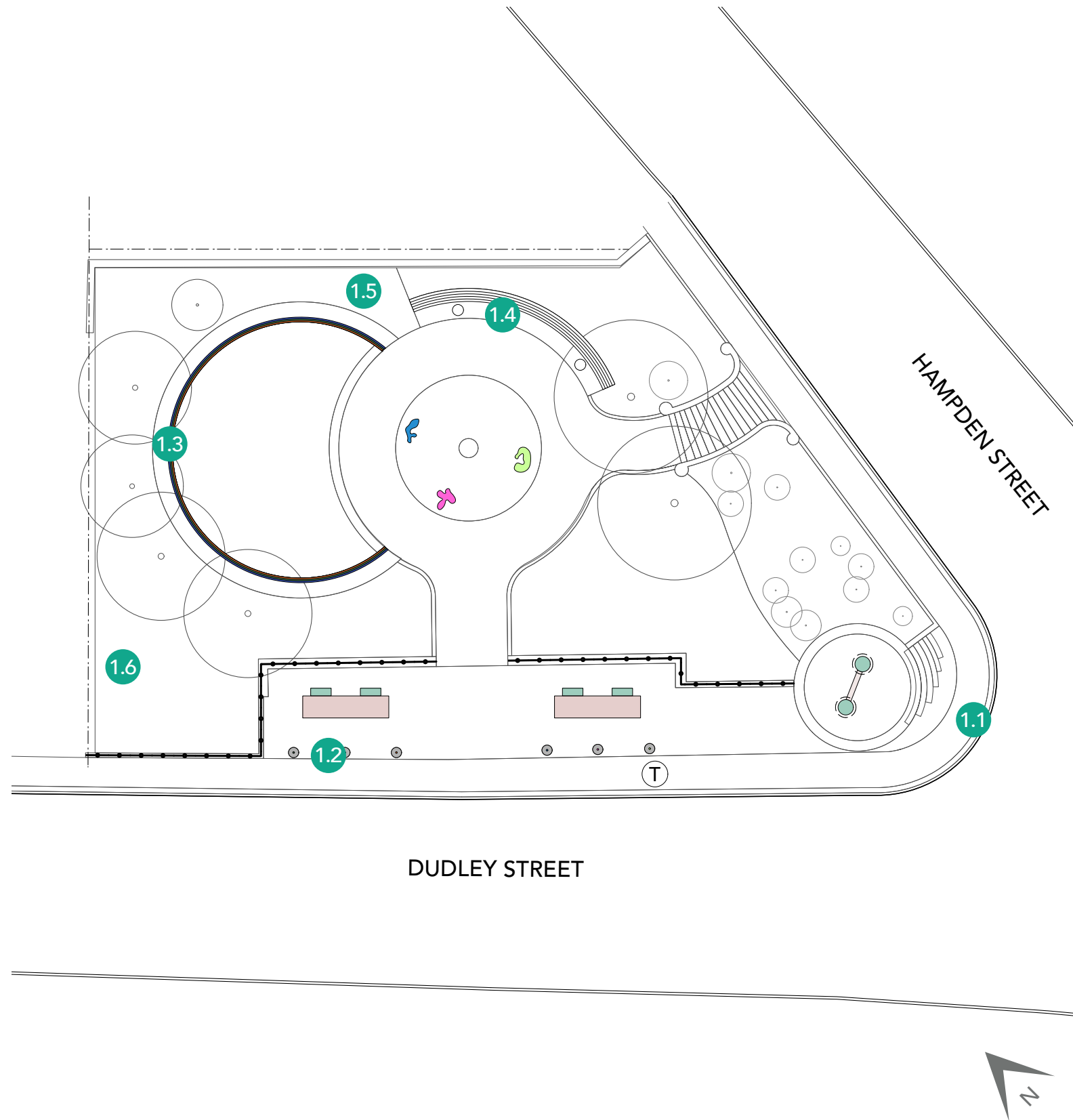
# Northern Site – Character



- 1 BUS STOP / STREET ZONE
- 2 MONUMENT / PARK SIGNAGE
- 3 STREET INTERSECTION ZONE
- 4 SLOPED PLANTING
- 5 LAWN AREAS
- 6 CENTRAL GATHERING AREA
- 7 SEAT WALL / COMMUNITY ART
- 8 UNDEFINED "BACK OF SITE" SPACE
- 9 GLOBE BENCH



# Northern Site – Concerns



1.1 Cracking and heaving of concrete paving



1.2 Bollards and shade structure do not contribute to bus stop and restrict site lines in park. Cracking and heaving of concrete paving. Outdated style.



1.3 Damaged mosaic inlays on concrete seat wall



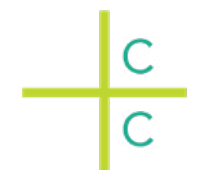
1.4 Obstructs view of Boston skyline



1.5 Overgrown and unmanaged vegetation along back retaining wall and fence

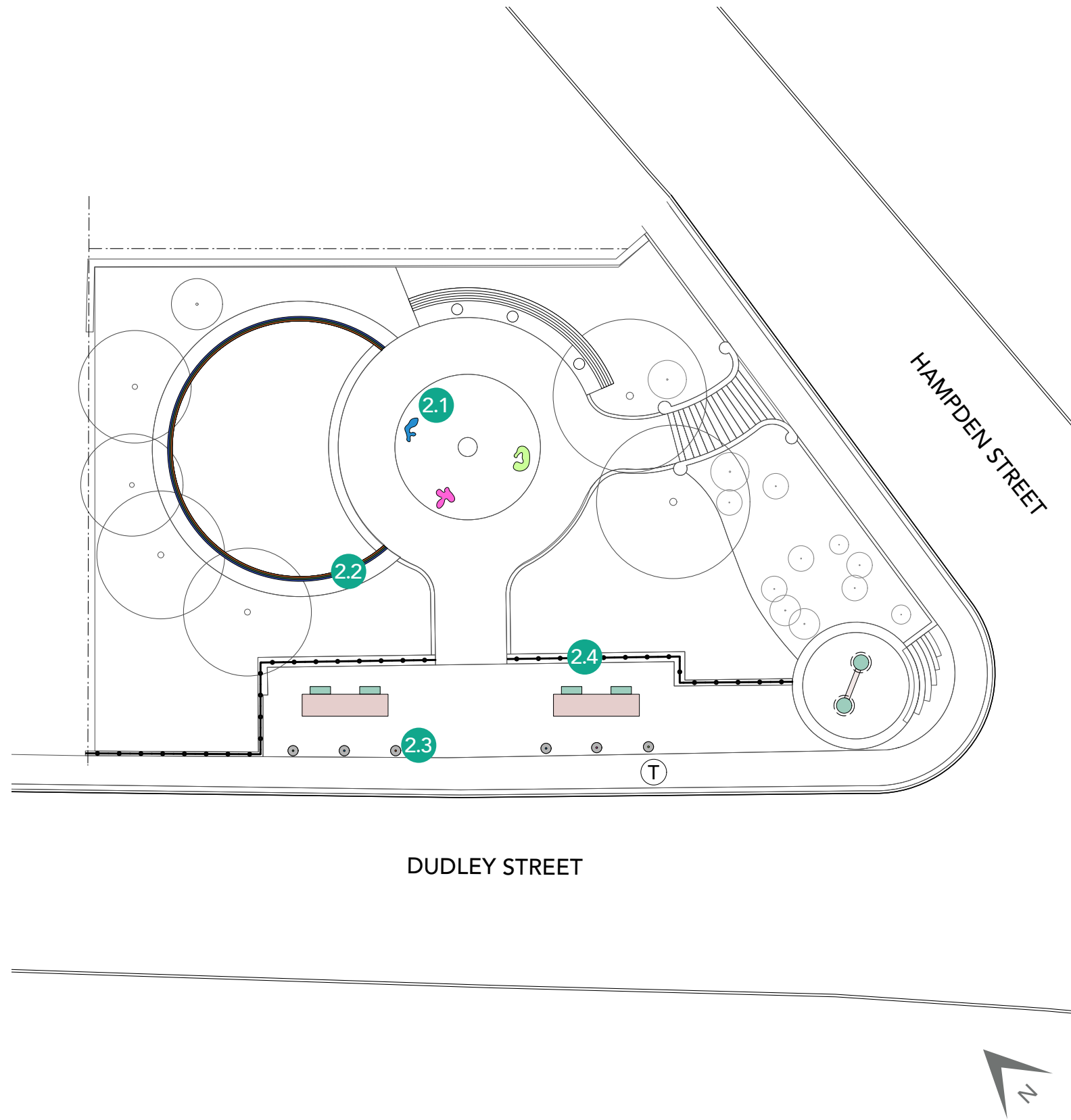


1.6 Cut-back vegetation





# Northern Site – Positive Features



**DECLARATION OF COMMUNITY RIGHTS:** We the residents of the Dudley area have the right to participate in all planning, programs, and policies affecting our lives; celebrate our cultural diversity through the arts; quality, affordable, accessible and culturally sensitive health care; control the development of open space; a hazard free environment; enjoy a full, spiritual and religious life; education and training to meet our potential; share in the jobs and prosperity created by economic development; quality and affordable housing; affordable child care responsive to our needs; safe and accessible public transportation; quality goods and services in our area...



2.1 Mosaic inlay on decorative benches



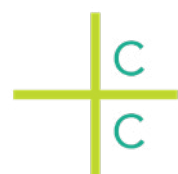
2.2 Seatwall with mosaic inlay stating the "Declaration of Community Rights"



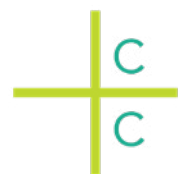
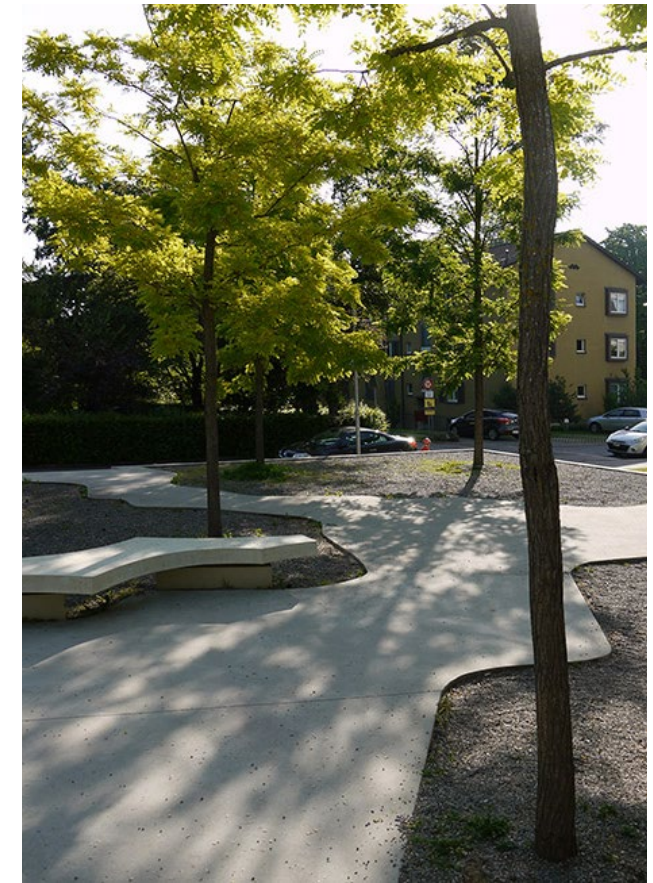
2.3 Mosaic inlays on concrete bollards



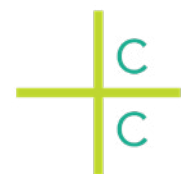
2.4 Bronze panels of the history of Roxbury



# Northern Site – Precedents



# Southern Site



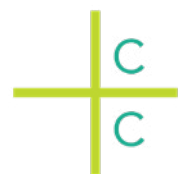
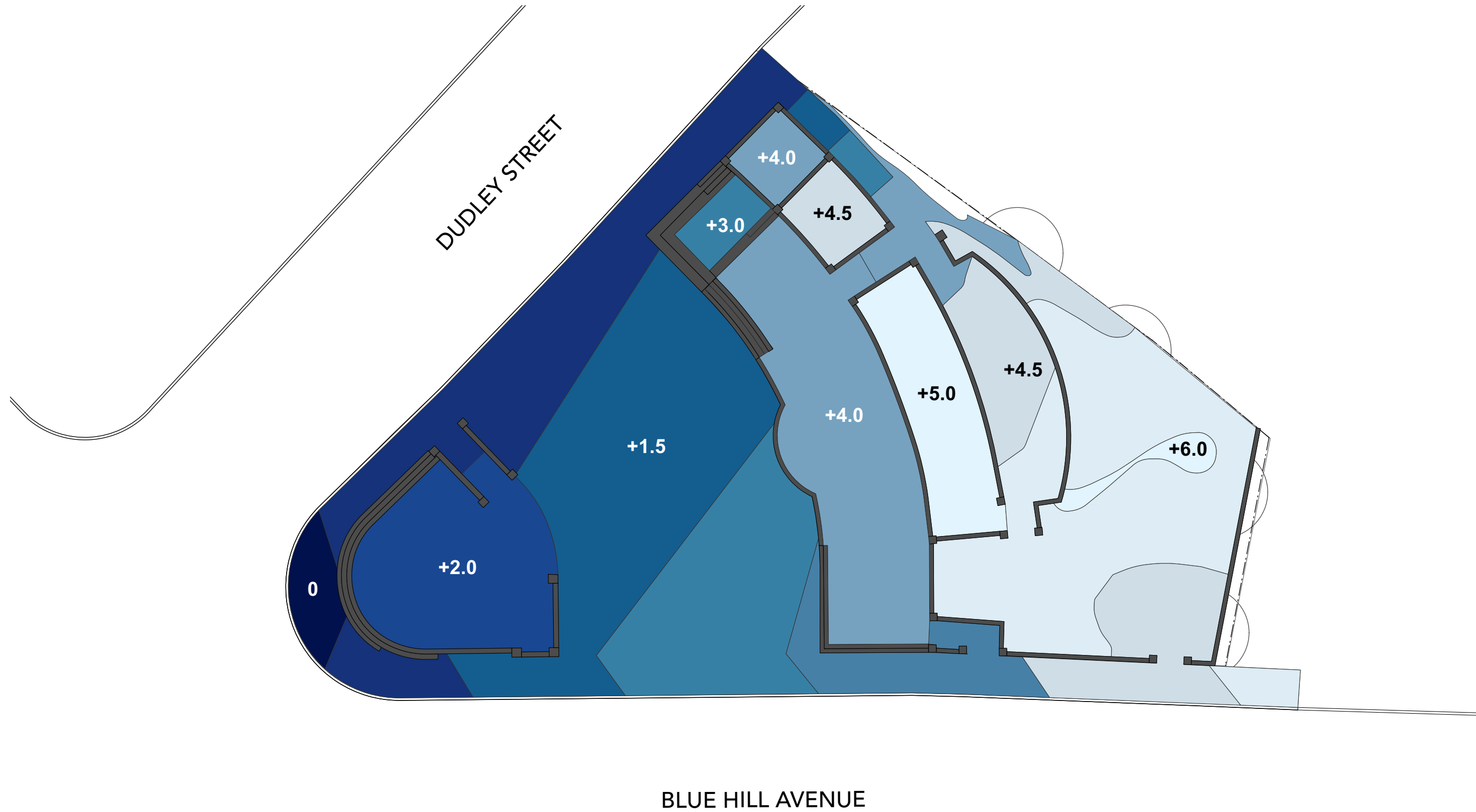
# Southern Site – Character



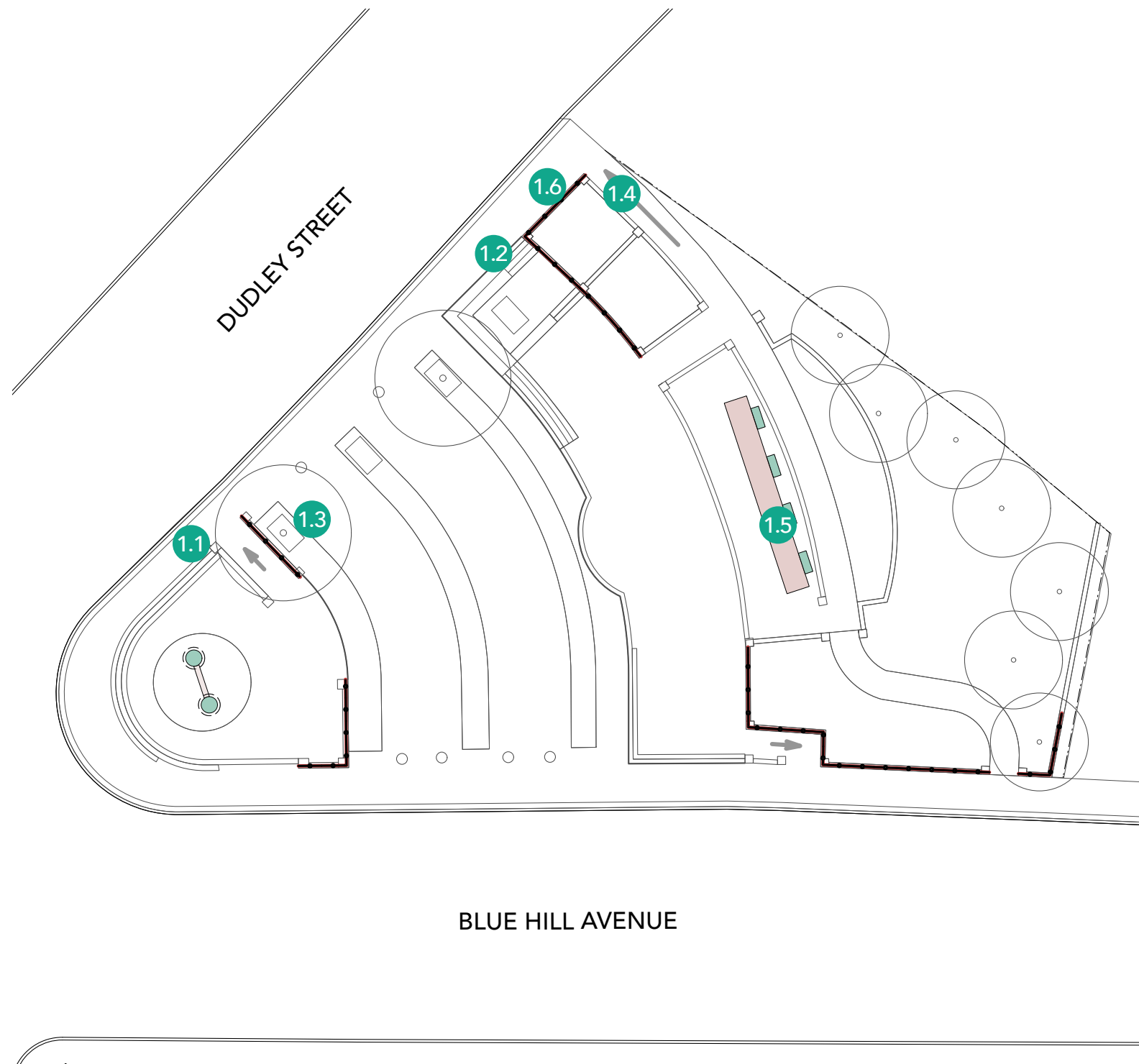
- 1 MONUMENT / CLOCK TOWER
- 2 PLAZA
- 3 STREET-SIDE SEATING AREA
- 4 STAGE PLATFORM
- 5 BACKDROP PLATFORM
- 6 CONCRETE PLANTERS
- 7 TREE GROVE
- 8 SIDE ENTRY



# Southern Site – Elevation



# Southern Site – Concerns



1.1 Narrow and restricted pedestrian circulation along Dudley Street



1.2 Complicated edge and access into park at Dudley St - multiple level steps, railing, seatwalls, ramp. Tree was removed and not replaced.



1.3 Tree grate not adjusted for tree growth. Tree is root-bound and heaving paving and grate



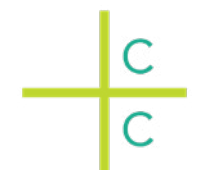
1.4 Path feels remote; unmaintained and overground plantings



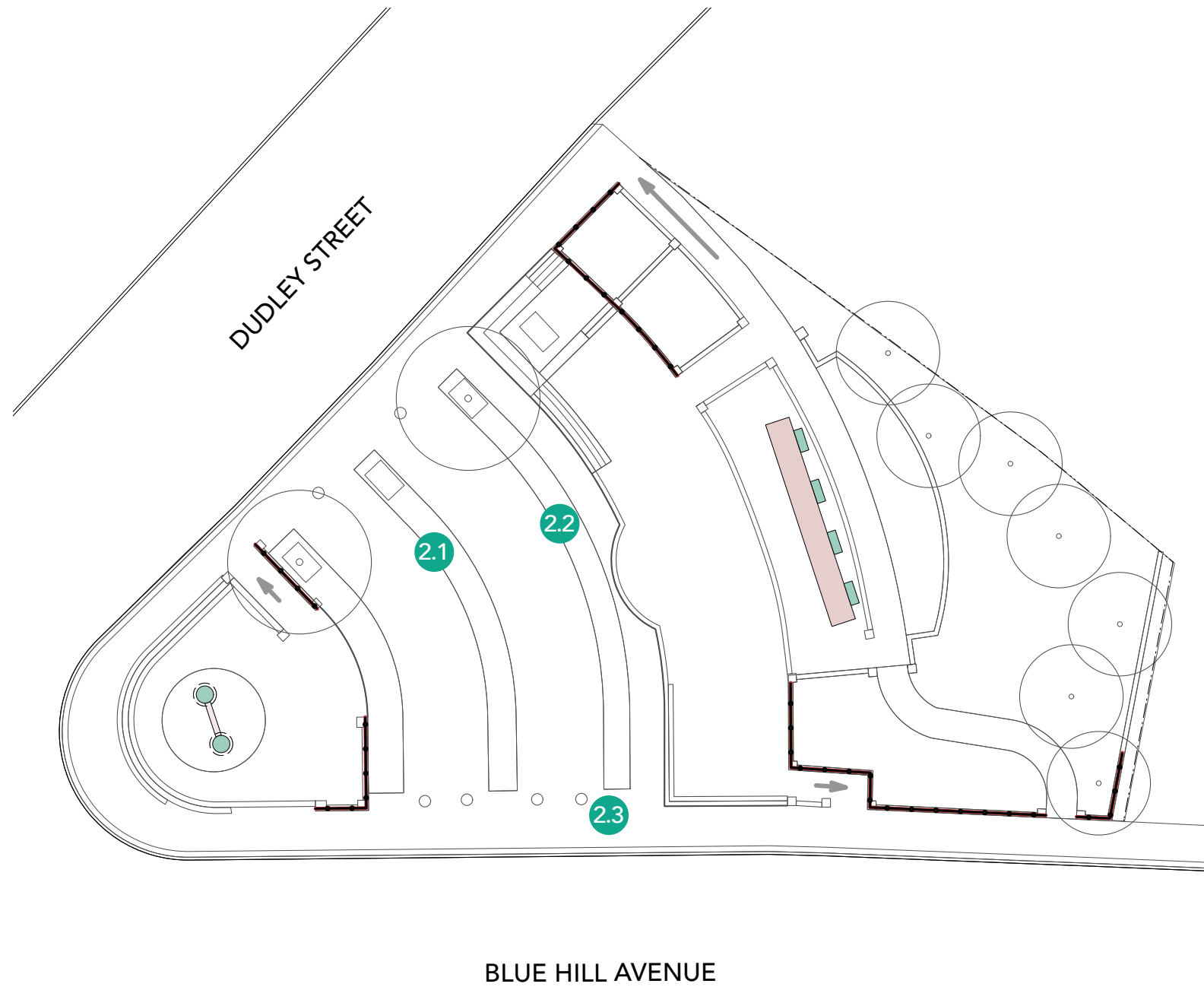
1.5 Fading paint at stage back-drop, outdated style, non-functioning lights



1.6 Outdated style, fading paint at decorative metal fence



# Southern Site – Positive Features



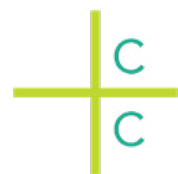
2.1 Brick etchings throughout site



2.2 Brick etchings throughout site



2.3 Mosaic inlays on concrete bollards

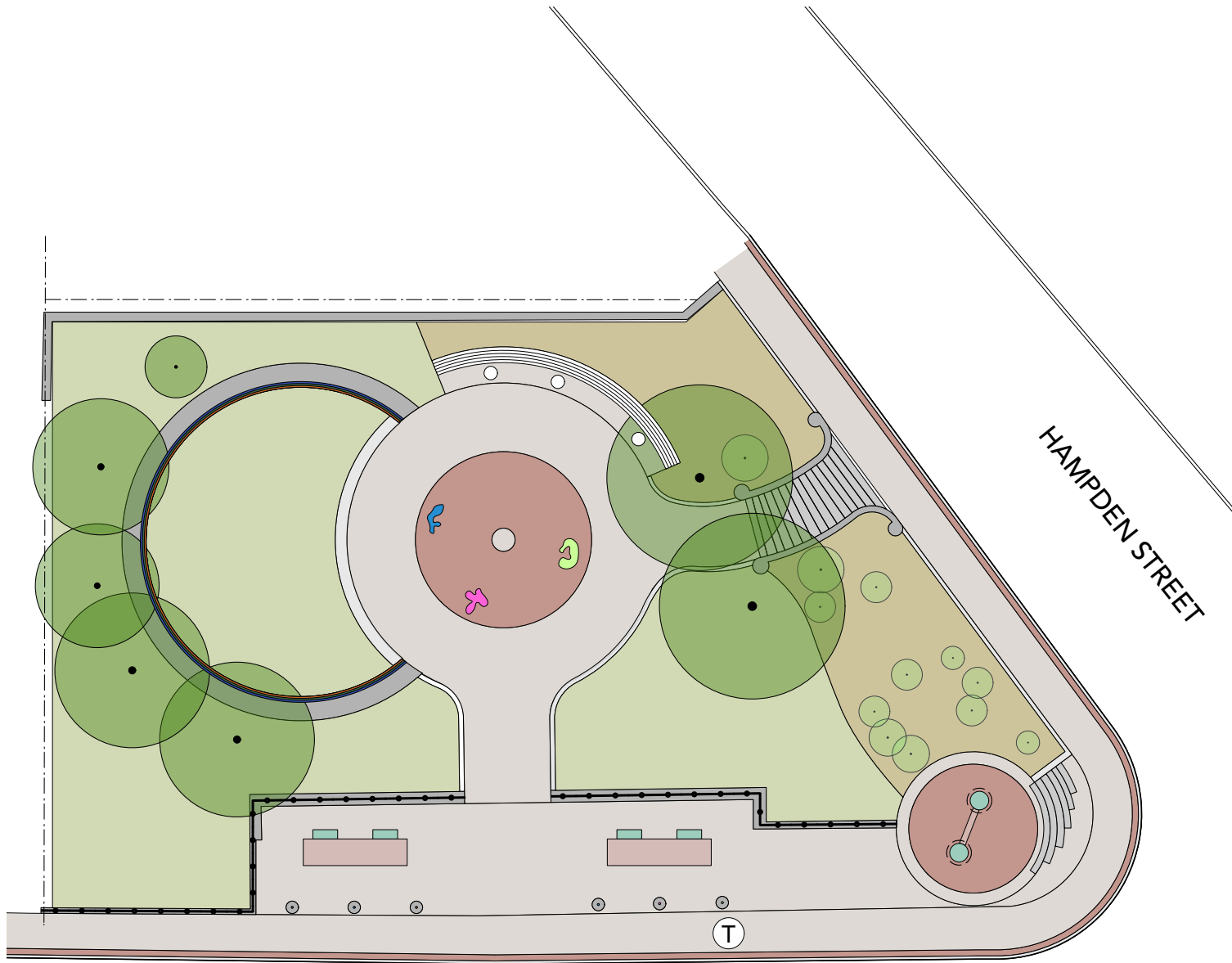


# Southern Site – Precedents



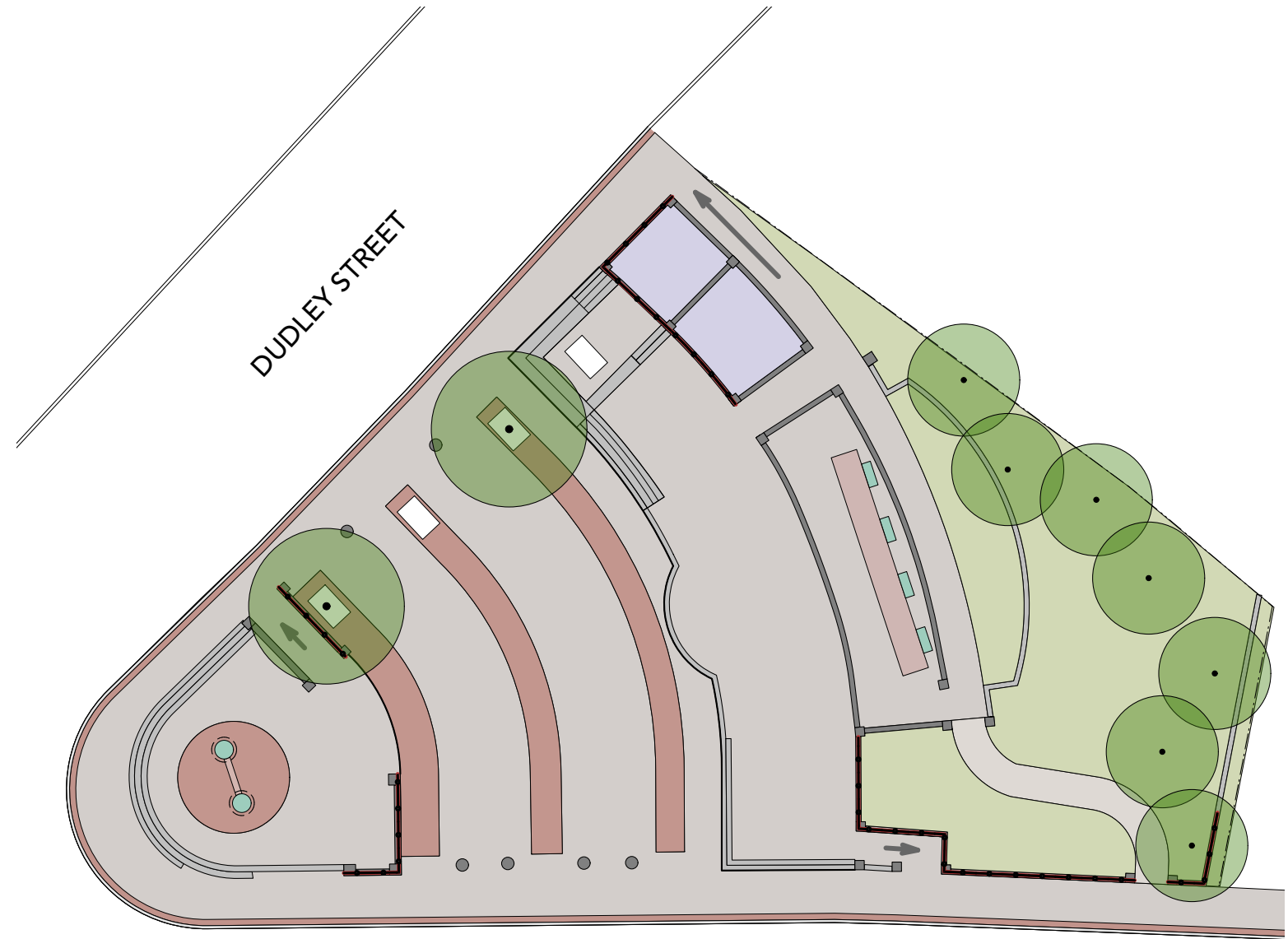


# Dudley Town Common



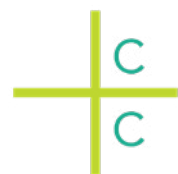
DUDLEY STREET

Northern Site



BLUE HILL AVENUE

Southern Site



# LISTENING & DISCUSSION

Help us build great parks.

Let us know what matters to you.

- What do you like best about Dudley Town Common?
- What is most challenging at the site?
- How do you use the site?
- Is the site fulfilling all your needs and uses? What other uses would you like to see?
- Does the interpretive signage and other artistic pieces speak to you? Or do they feel out of touch?



# THANK YOU!

**Next Meeting  
April 20, 2022  
6:00pm**

**[boston.gov/dudley-common](https://boston.gov/dudley-common)**

For questions, maintenance requests or  
concerns regarding any of our  
parks contact 311

**BOS:  
311**



March 16, 2022  
Boston Parks and Recreation

