

Boston Public Health Commission Wastewater Epidemiology Program COVID-19 Report

Updated: 09-Jan-2023 | Data Complete Through: 04-Jan-2023

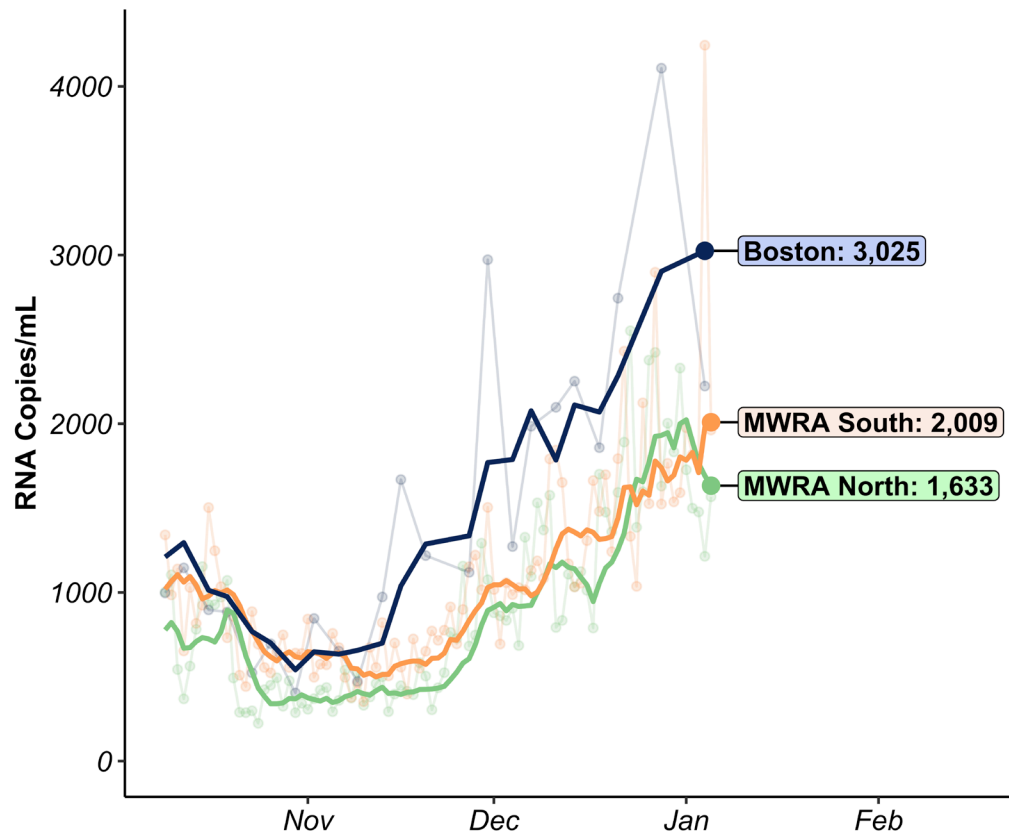


Report Contents

1. Overview and Summary
2. Results by Neighborhood
3. Variant Results
4. Neighborhood Site Status & Details



Overview/Summary



CITYWIDE AVERAGE	RANGE ACROSS 11 NEIGHBORHOOD SITES
3,025 <i>RNA copies/mL</i>	791 – 6,456 <i>RNA copies/mL</i>
Data through: 04-Jan-2023	

7-day trend: Stable	+4% over the past 7 days
-------------------------------	------------------------------------

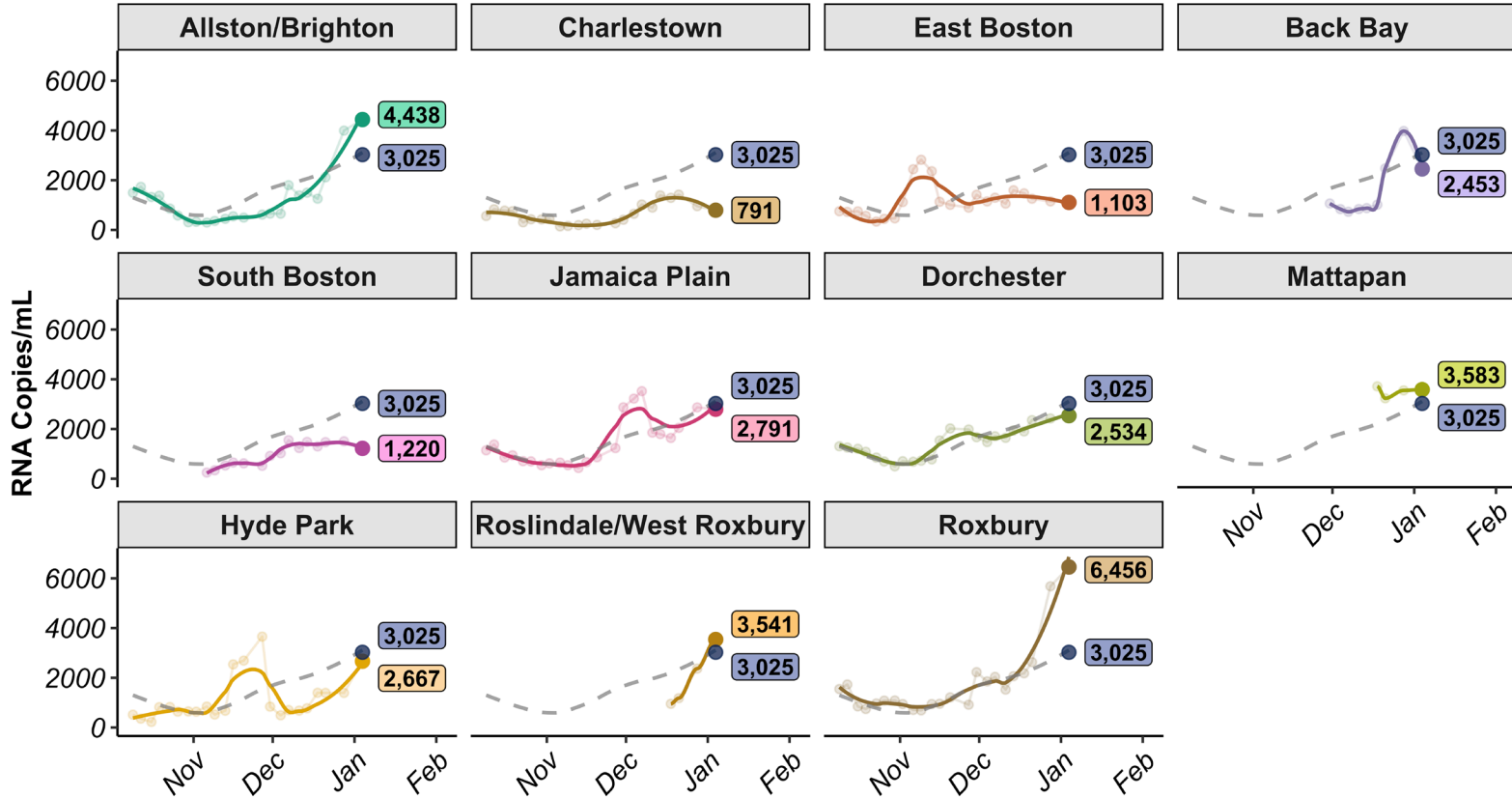
14-day trend: Increasing	+32% over the past 14 days
------------------------------------	--------------------------------------



RESULTS BY NEIGHBORHOOD



BPHC Neighborhood Trends



Points shown are 3-sample average values (i.e., 8-day moving average); line shows smoothed trend for 8-day moving average; dotted grey line in each panel represents average across all Boston sites weighted by population.

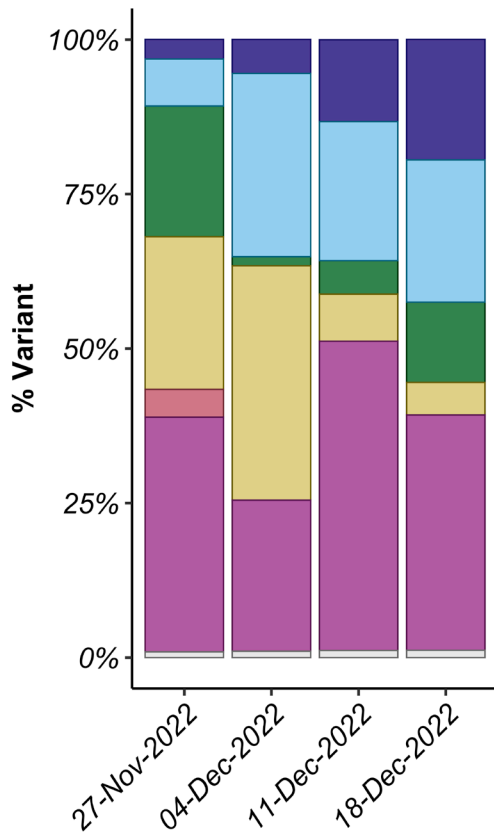


VARIANT RESULTS





Percent Variant Lineages (Citywide)



Average variant percentage across all BPHC sites weighted by population size; Table shows variant percentages for samples collected the week of 18-Dec-2022 (most recent available data); Variant results are reported weekly with a 3-week lag due to laboratory processing and analysis.

BA.2* includes BA.2, BA.2.12, BA.2.12.1, and other BA.2 sub-lineages; BA.4* includes BA.4 and its sublineages, including BA.4.6; BA.5* includes the sublineages of BA.5, except BQ.1* and BF.7; BQ.1* includes BQ.1 and its sublineages, including BQ.1.1; 'Other variants' contains all variants not explicitly quantified.; See: <https://www.biobot.io/covid19-variants-report-notes/>

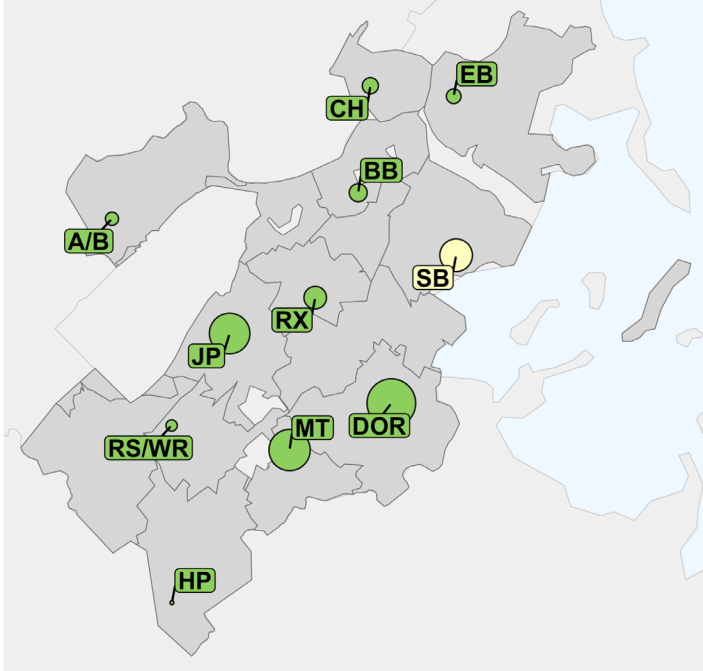


NEIGHBORHOOD SITE STATUS & DETAILS



Neighborhood Site Status and Details

Status of Wastewater Sampling Locations
(10-Jan-2023)



Site Status (N=11) a Active (n=10) a Paused: Construction (n=1)

#	Site	Date Site Confirmed	Site Status	Pop. Covered	% Neighborhood Covered
01	A/B	02-Oct-2022	Active	2,684	4.0%
02	CH	02-Oct-2022	Active	3,736	18.3%
03	EB	02-Oct-2022	Active	3,178	6.3%
04	BB	20-Nov-2022	Active	4,551	8.1%
05	SB	30-Oct-2022	Paused: Construction ¹	14,962	35.8%
07	JP	02-Oct-2022	Active	23,573	56.9%
08	DOR	02-Oct-2022	Active	34,562	23.8%
09	MT	11-Dec-2022	Active	24,441	80.5%
10	HP	02-Oct-2022	Active	1,262	3.5%
11	RS/WR	11-Dec-2022	Active	2,165	3.5%
12	RX	02-Oct-2022	Active	7,036	16.5%

¹Sampling at the South Boston site was paused starting on 28-Dec-2022 due to construction. Sampling is expected to resume in mid-January 2023.

