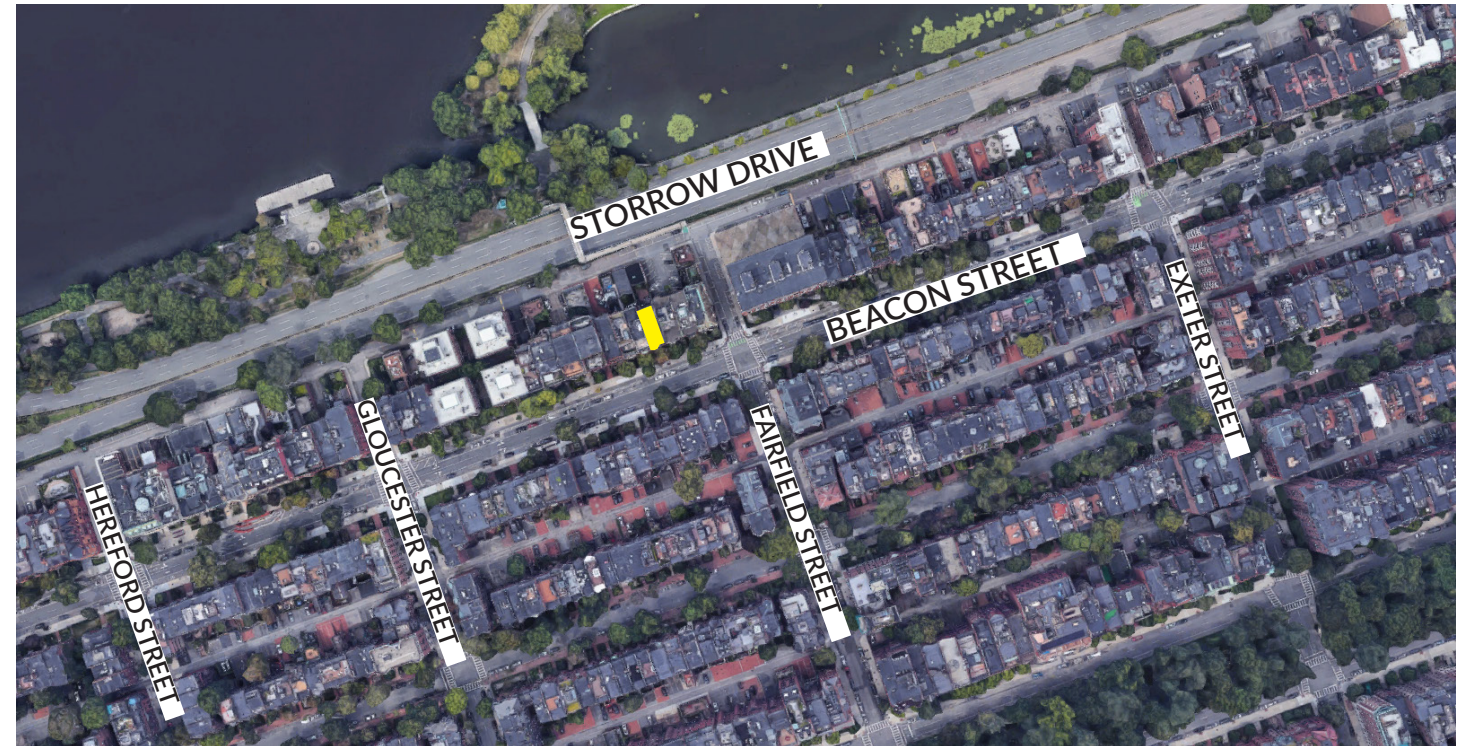




340 BEACON STREET, UNIT 4

340 BEACON STREET
SITE LOCATION & SITE PLAN



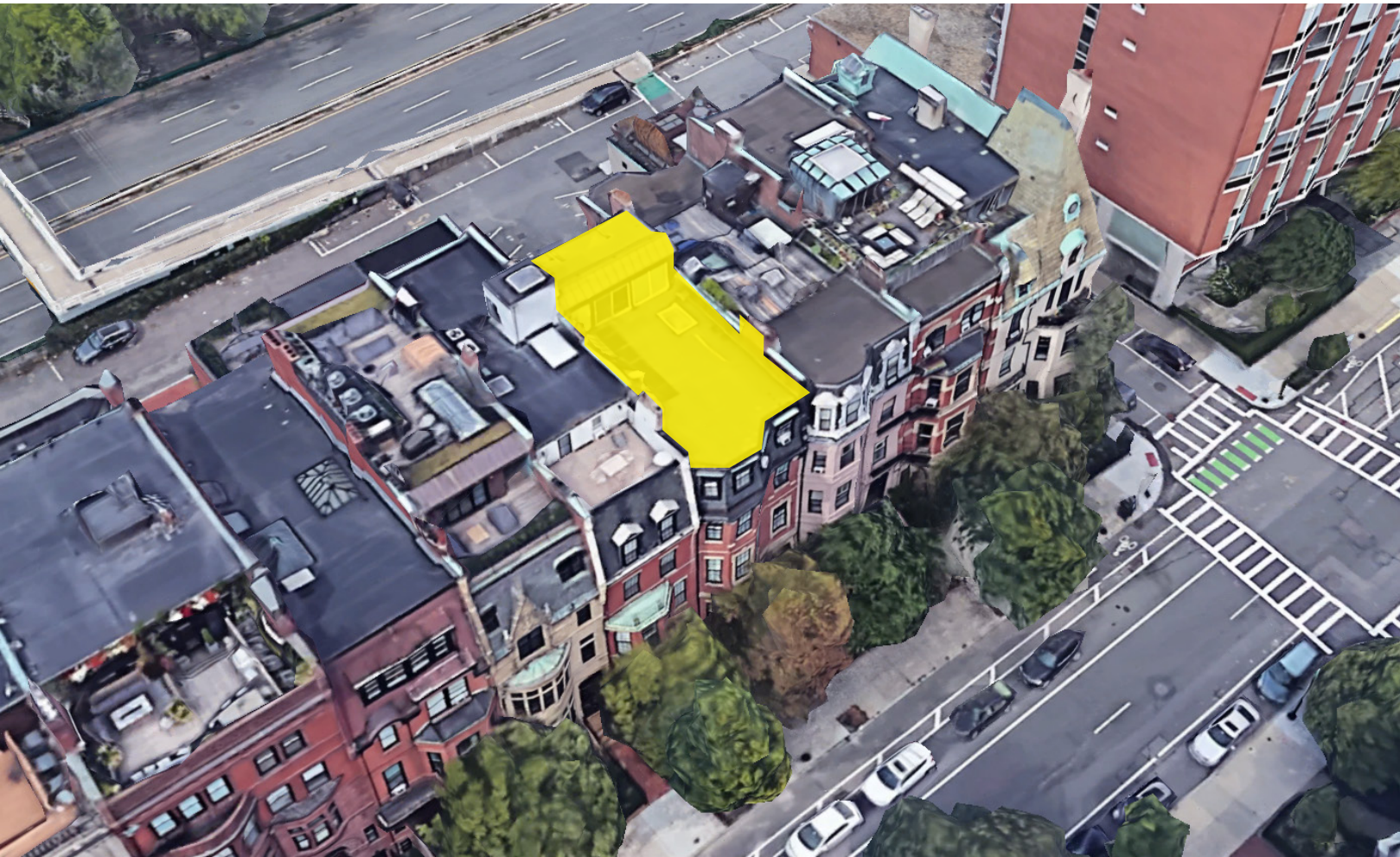
ROOF DECK

PROVIDE SAFETY + USABILITY OF ROOF

PENTHOUSE

**MAINTAIN EXISTING OPENINGS,
WEATHERPROOF
WATERPROOF
REMEDiate WATER DAMAGE + INFILTRATION
SOUND INSULATION**

1. CONSTRUCT new roof deck. Refer to attached drawings.
2. INSTALL black metal picket railings around roof deck.
3. REPLACE IN KIND existing cladding around headhouse/penthouse with new Aluminum Snap-Clad Standing Seam Cladding. Color to match existing
4. ADD 1'-4" overhang at front of headhouse/penthouse.
5. INSTALL (4) new windows and (1) new french door in front of headhouse/penthouse. Refer to attached drawings.
6. REPLACE IN KIND double hung windows at rear of headhouse/penthouse.
7. REPLACE IN KIND patio door at rear of headhouse/penthouse.
8. INSTALL (1) new walk-on skylight (flush to deck) in existing skylight location.
9. INSTALL light fixtures at front elevation of headhouse/penthouse.



SURROUNDING CONTEXT

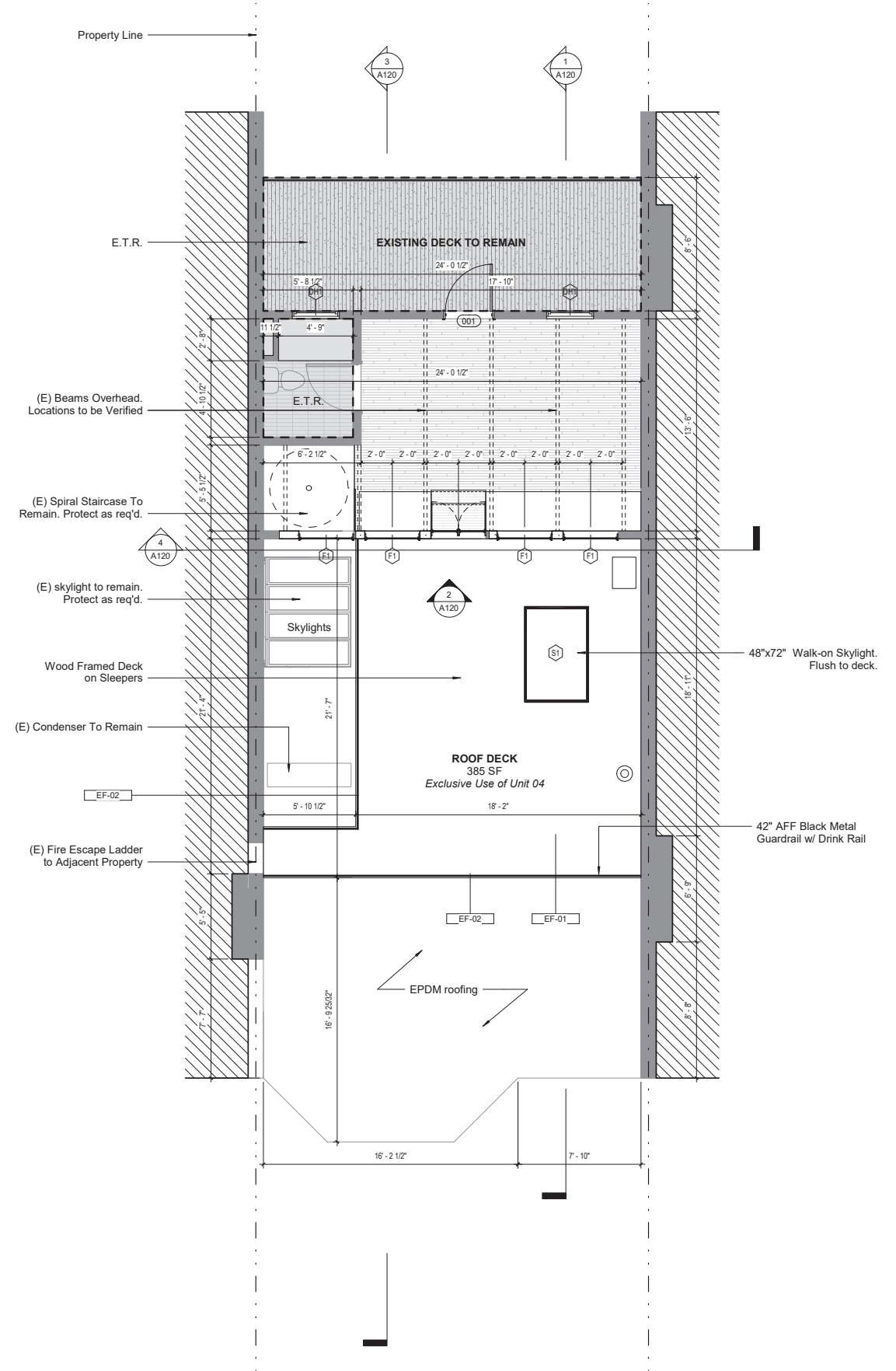


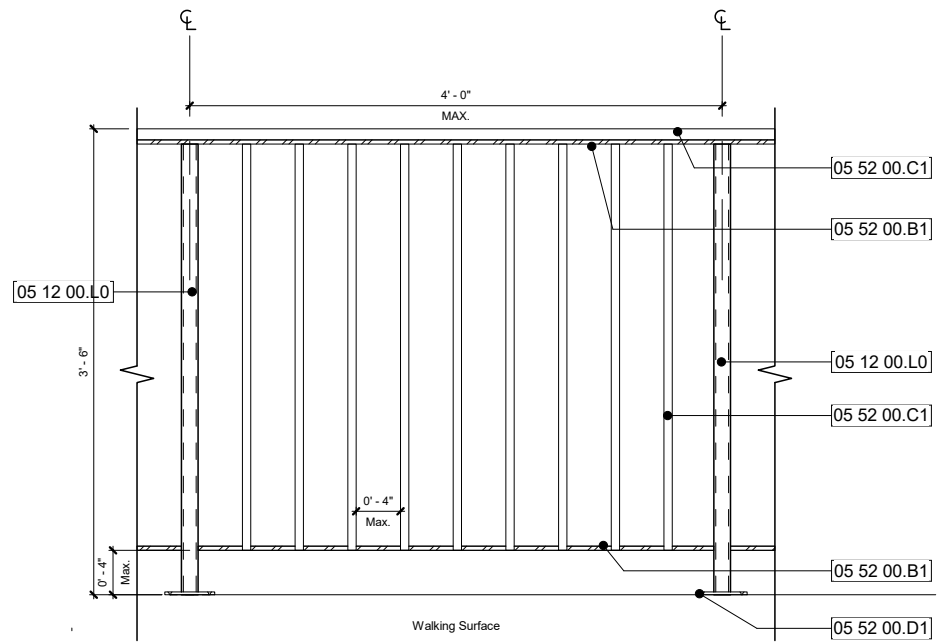
**PROVIDE SAFETY +
USABILITY OF ROOF**



ROOF PLAN

Deck will be composite decking with black metal picket railing 3'6" off of deck.
See additional details on the following page.





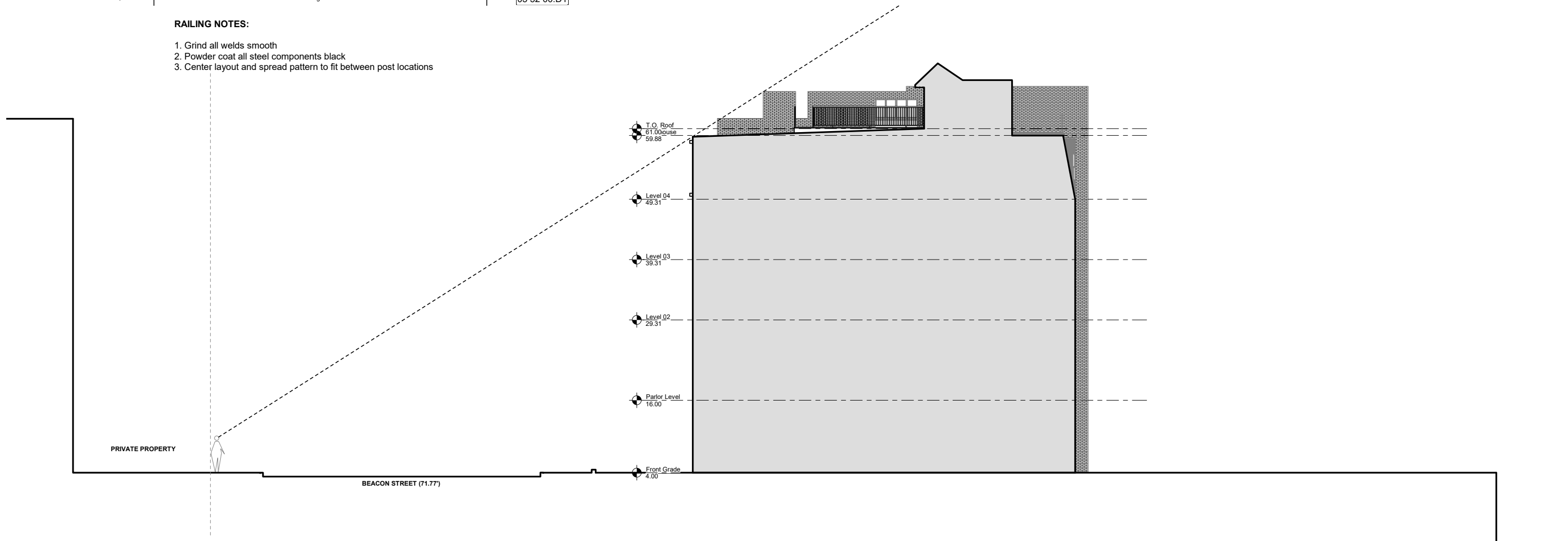
RAILING NOTES:

1. Grind all welds smooth
2. Powder coat all steel components black
3. Center layout and spread pattern to fit between post locations

EF-01	EF-02	EF-03
DESCRIPTION: Composite Decking MANUFACTURER: Trex or Approved Equal MAKE/MODEL: Hidden Fastener FINISH/COLOR: TBD NOTES: GC to Provide Samples	DESCRIPTION: Guardrail MANUFACTURER: Fortress F426 or Approved Equal MAKE/MODEL: TBD FINISH/COLOR: Black NOTES: Drink Rail to Match Deck	DESCRIPTION: Aluminum Snap-Clad Standing Seam Cladding MANUFACTURER: TBD MAKE/MODEL: TBD FINISH/COLOR: Dark Gray NOTES: GC to Provide Samples

ADDITIONAL INFO
GC to Verify All Products with Ownership Prior to Purchase

EXTERIOR MATERIAL



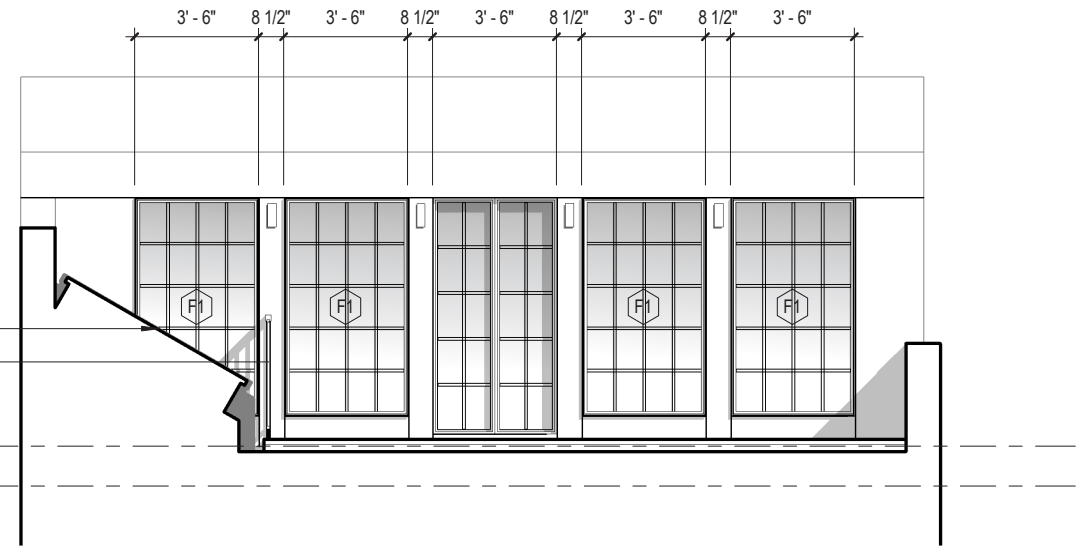
**WEATHERPROOF
WATERPROOF
REMEDiate WATER DAMAGE +
INFILTRATION
SOUND INSULATION**



(E) skylight to remain.
Protect as req'd.

EF-02

T.O. Roof
61.00
Penthouse
59.88



Aluminum Snap-Clad
Standing Seam Cladding
(REPLACE IN KIND)

(E) skylight to remain.
Protect as req'd.

1
A500
Sim

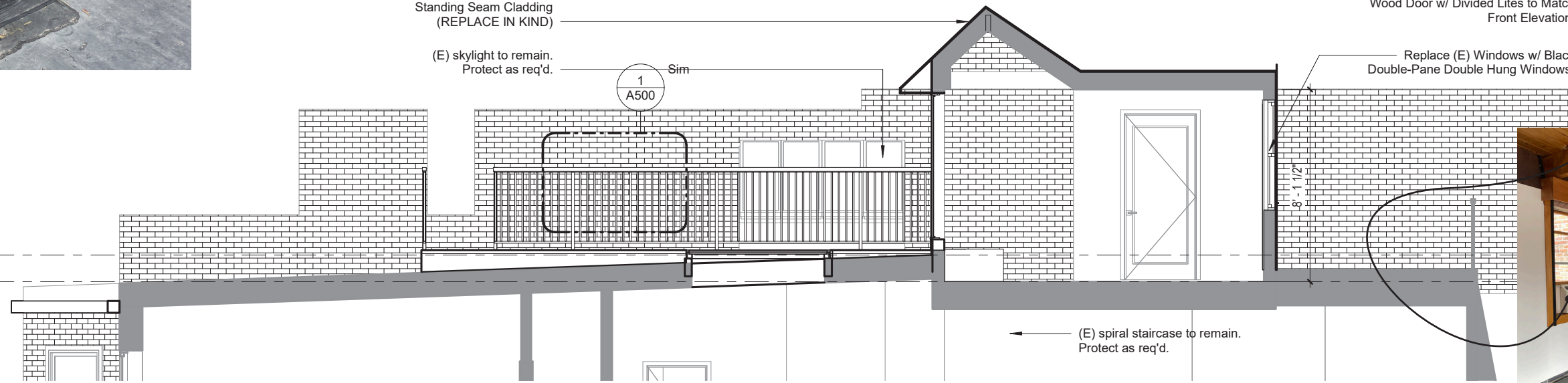
Replace (E) Door w/ Full Glass Black
Wood Door w/ Divided Lites to Match
Front Elevation.

Replace (E) Windows w/ Black
Double-Pane Double Hung Windows,

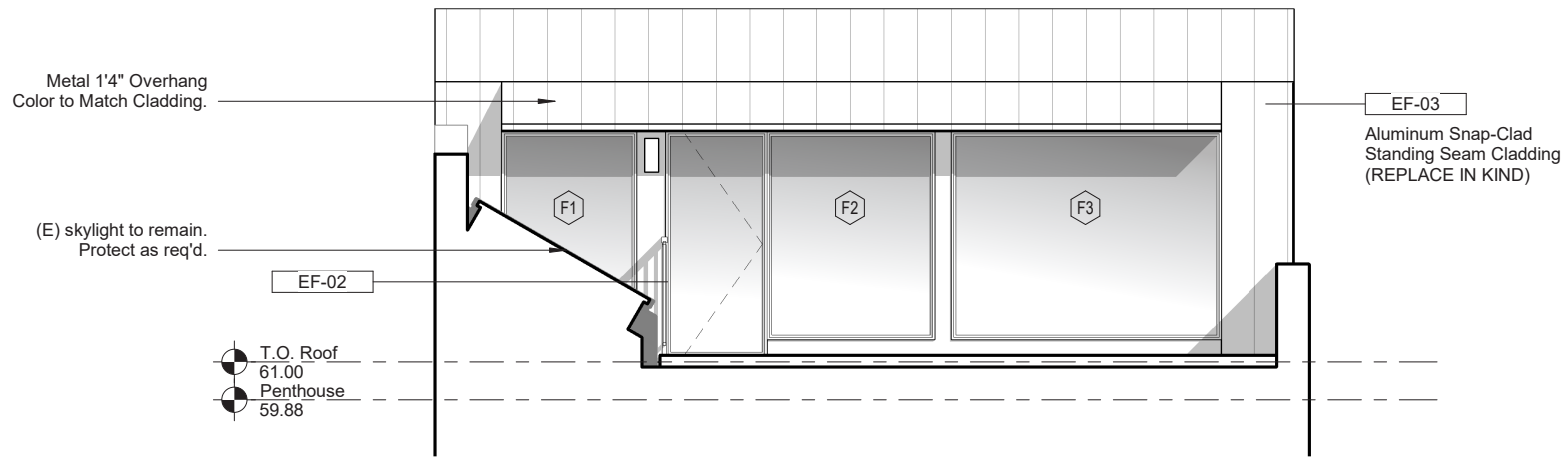
8'-1 1/2"

(E) spiral staircase to remain.
Protect as req'd.

T.O. Roof
61.00
Penthouse
59.88



PREVIOUS



NEW



FRENCH DOORS,
SYMMETRY,
RHYTHM WORKS WITH INTERIOR SPACE



