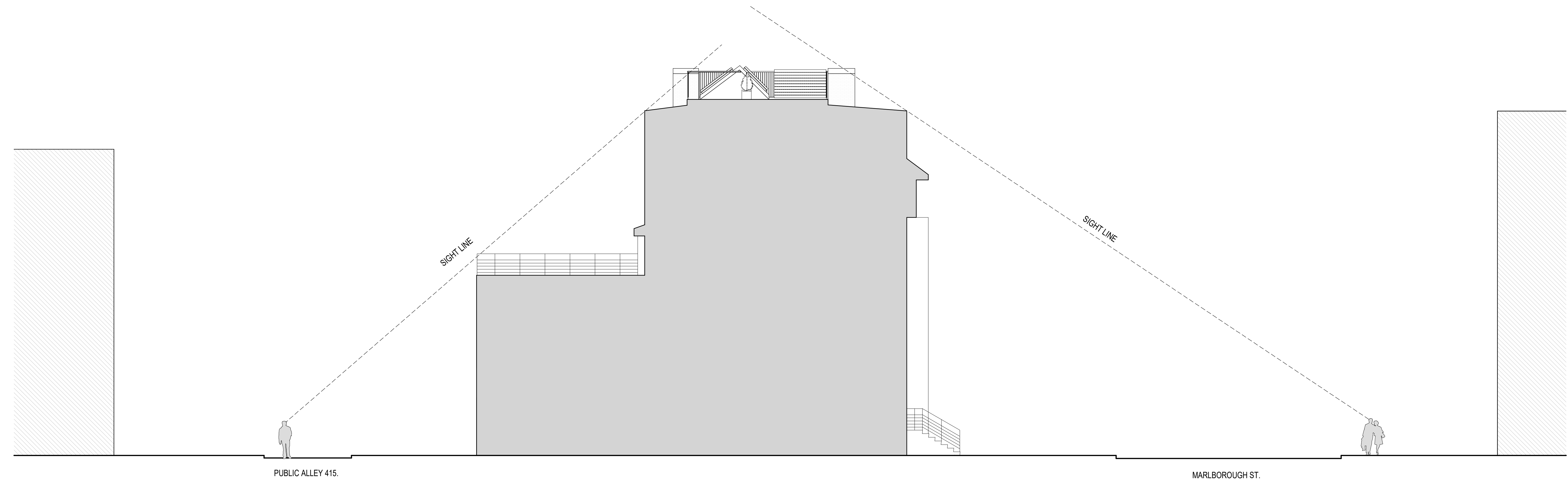


Timothy Burke
ARCHITECTURE

142 BERKELEY STREET, BOSTON MASSACHUSETTS 02116
P: 617.268.1332 | W: timothyburke.net | F: 617.268.1116



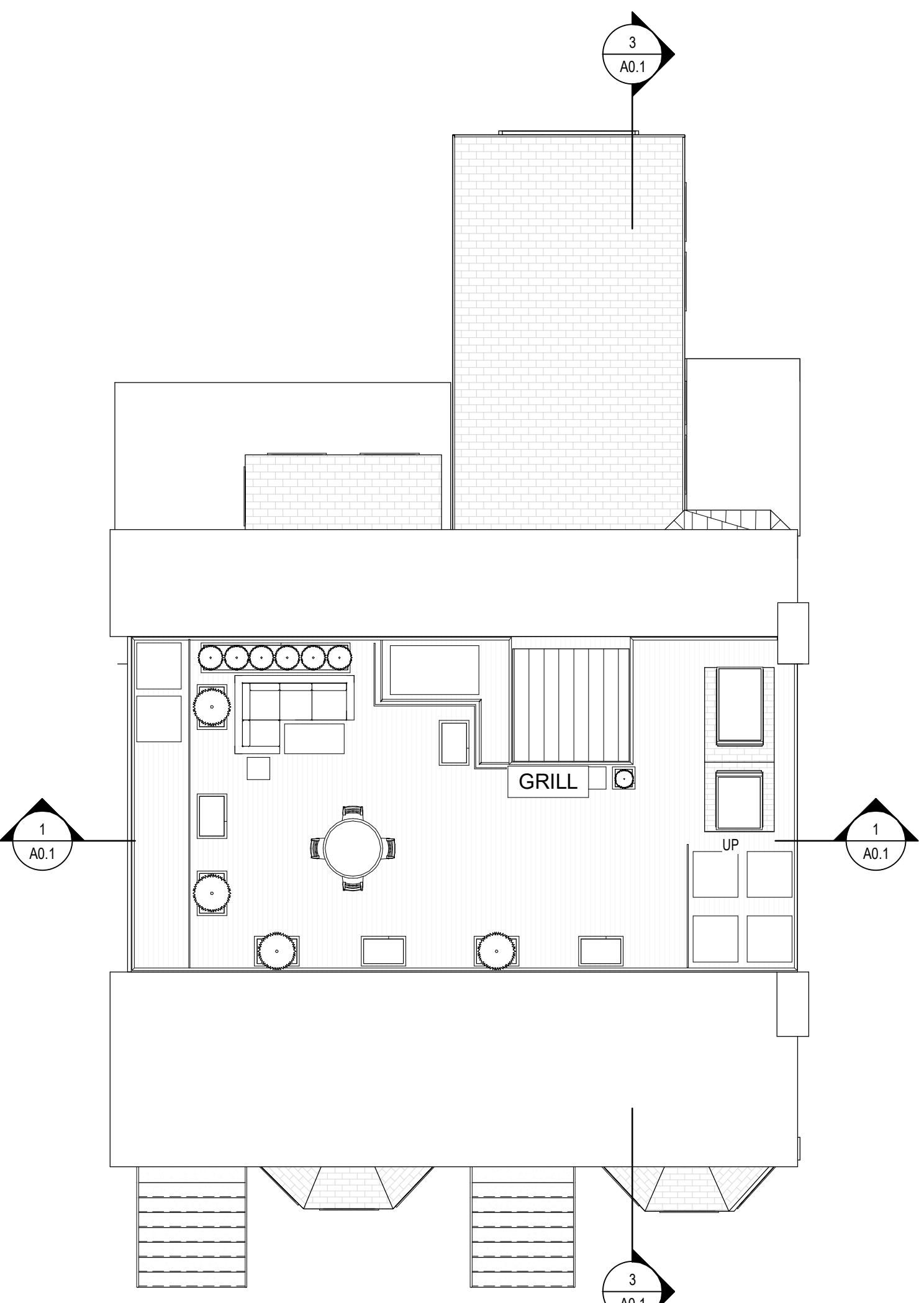
REV.	DATE	DESCRIPTION	QT



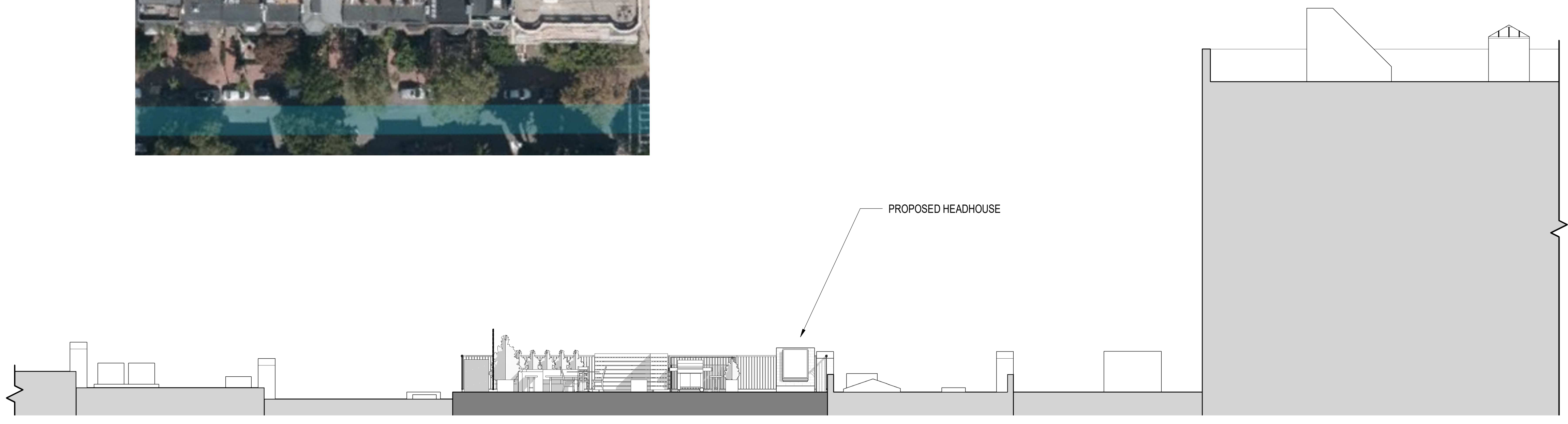
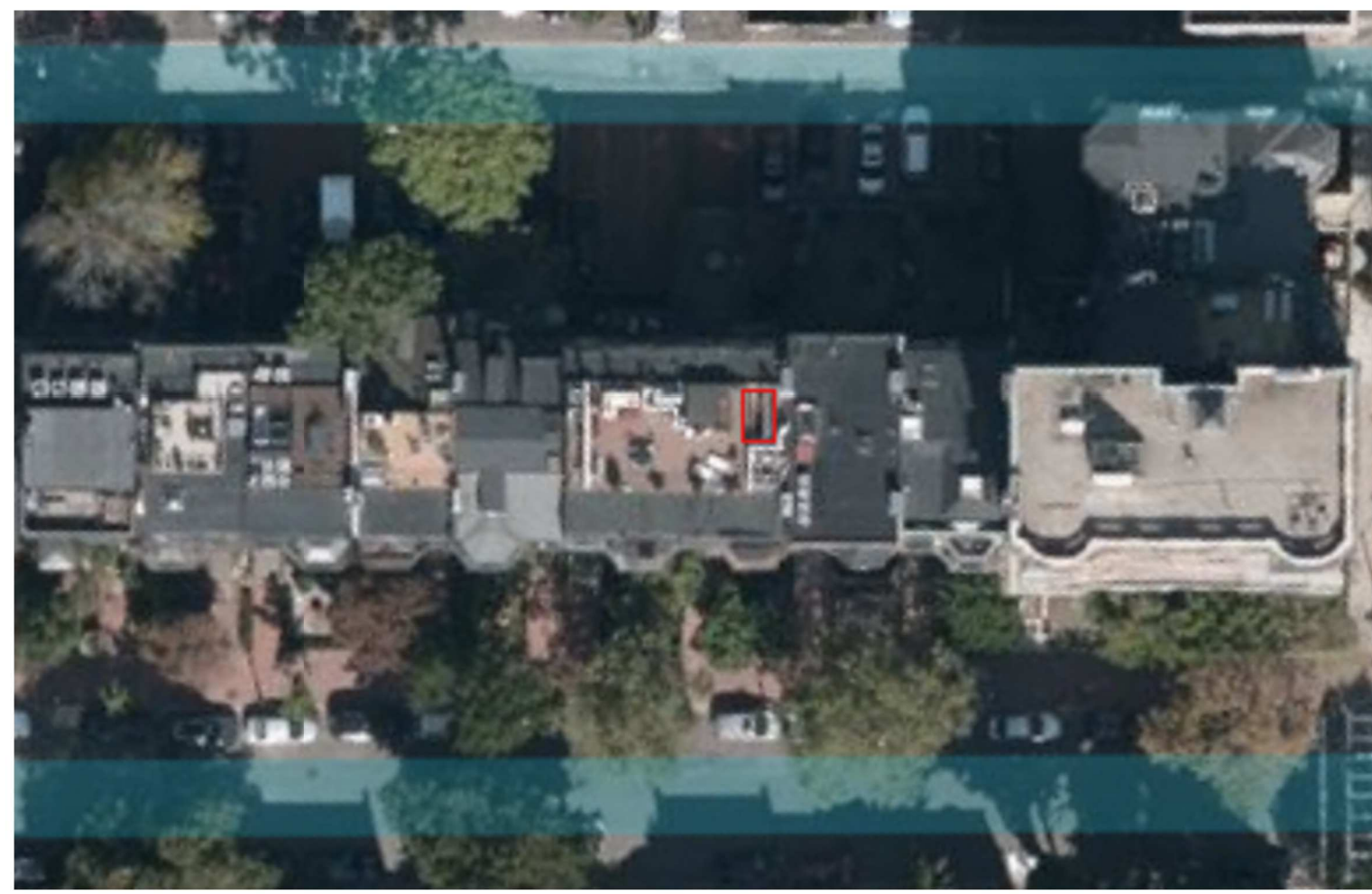
PUBLIC ALLEY 415.

MARLBOROUGH ST.

3 STREET LEVEL SECTION
1/8" = 1'-0"



2 ROOF PLAN
1/8" = 1'-0"

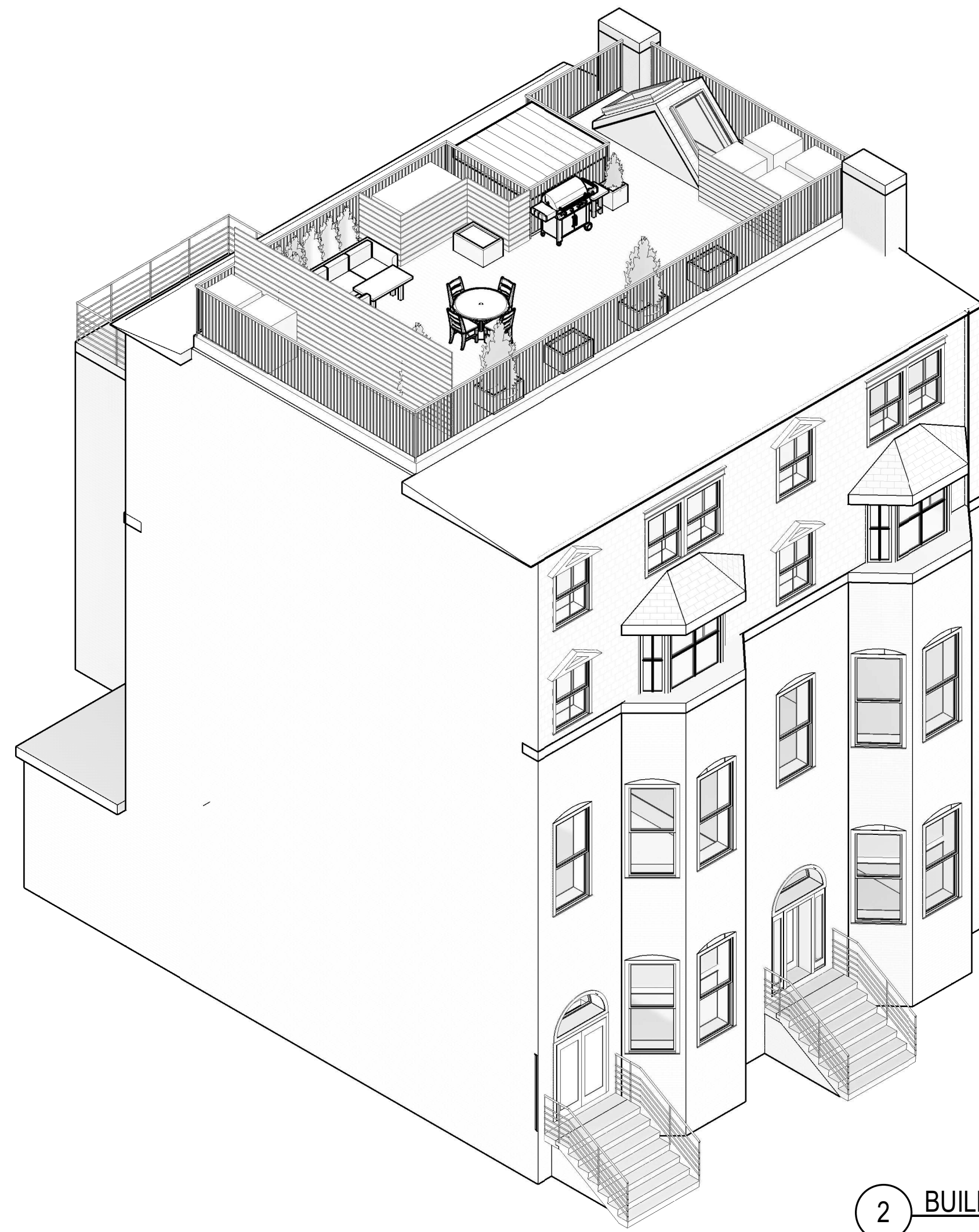


1 SITE SECTION
1/8" = 1'-0"

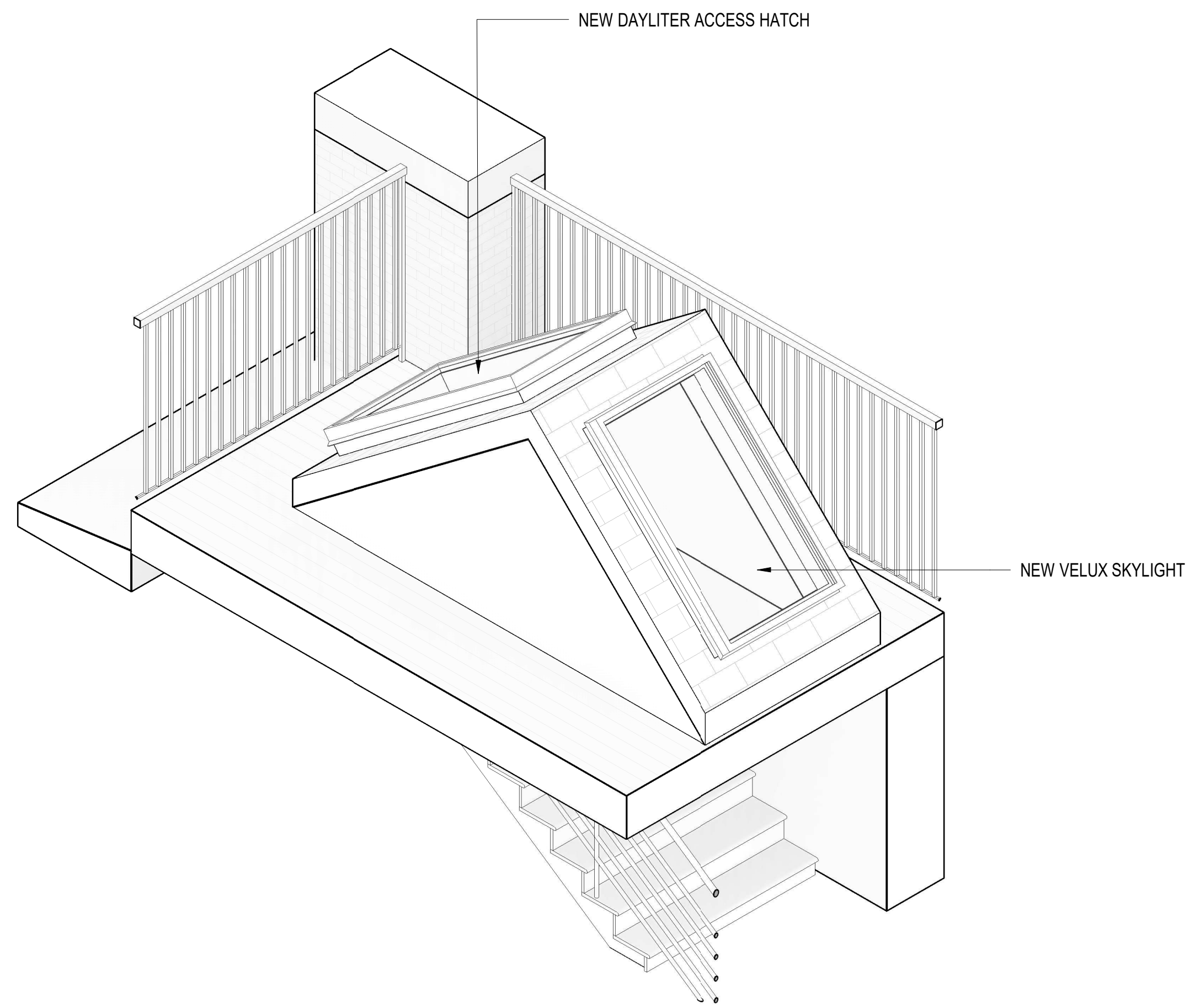
SITE CONTEXT

341 Marlborough St
Boston, MA 02115

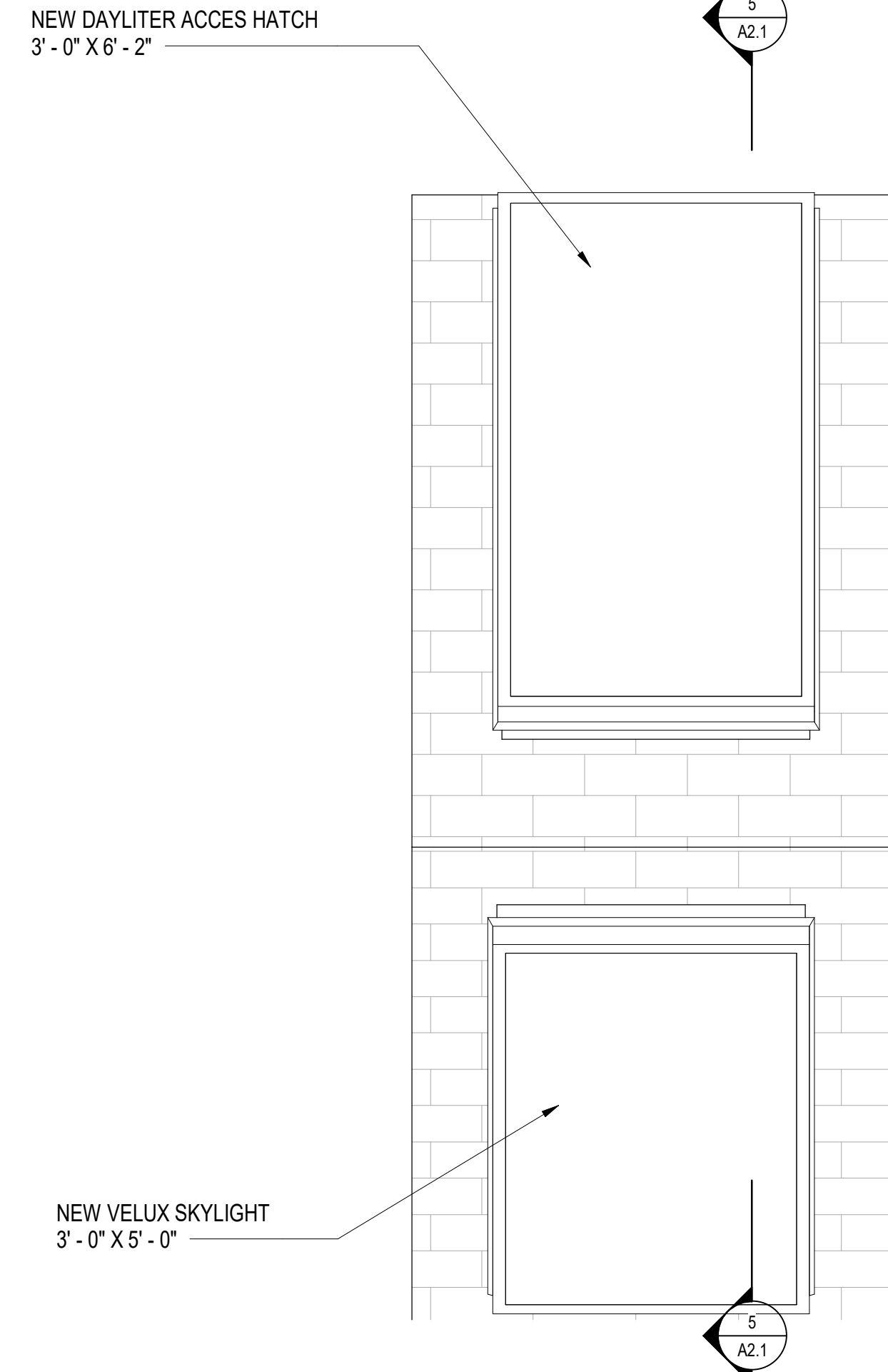
A0.1



2 BUILDING AXON



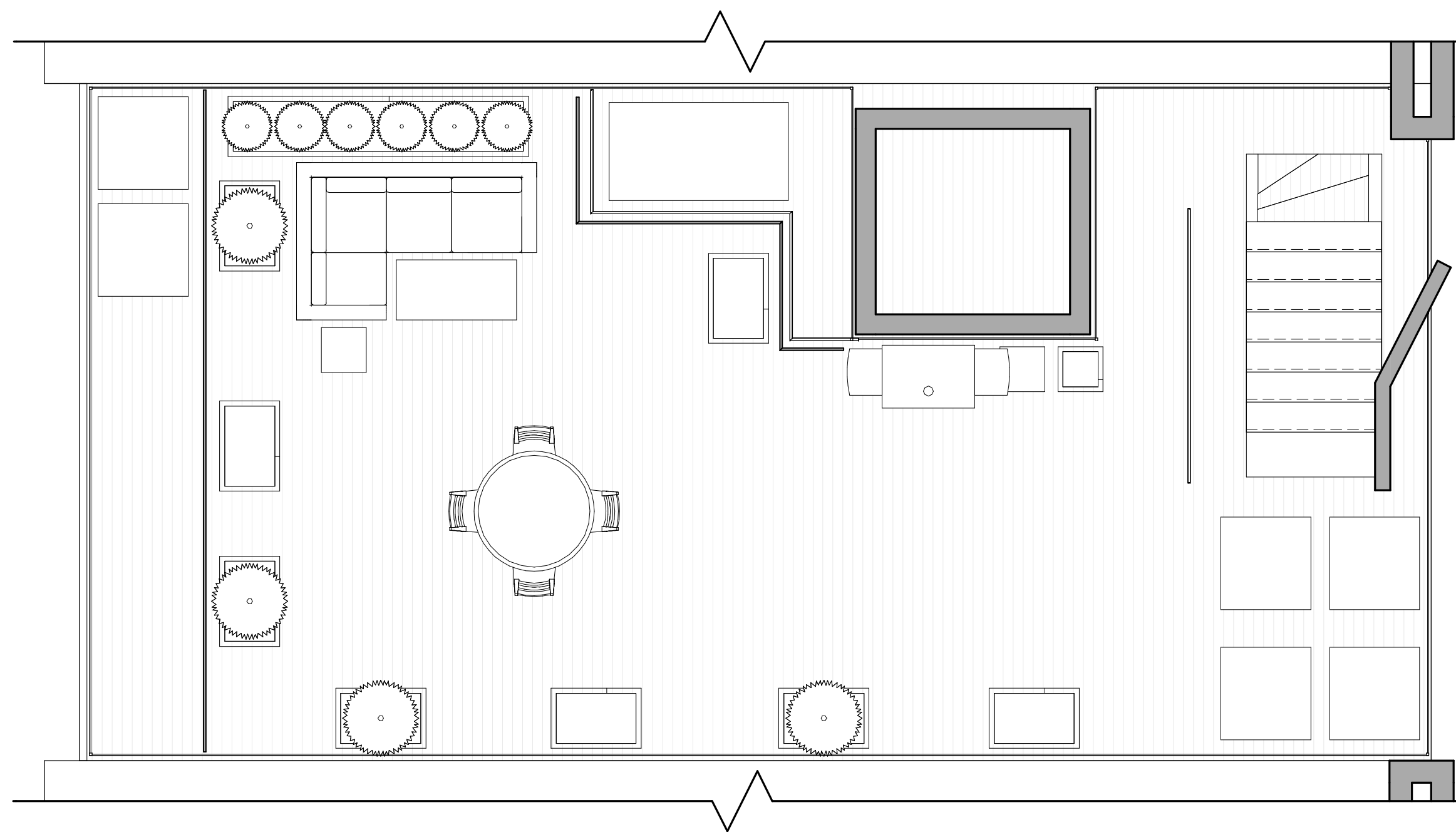
5 HATCH PERSPECTIVE



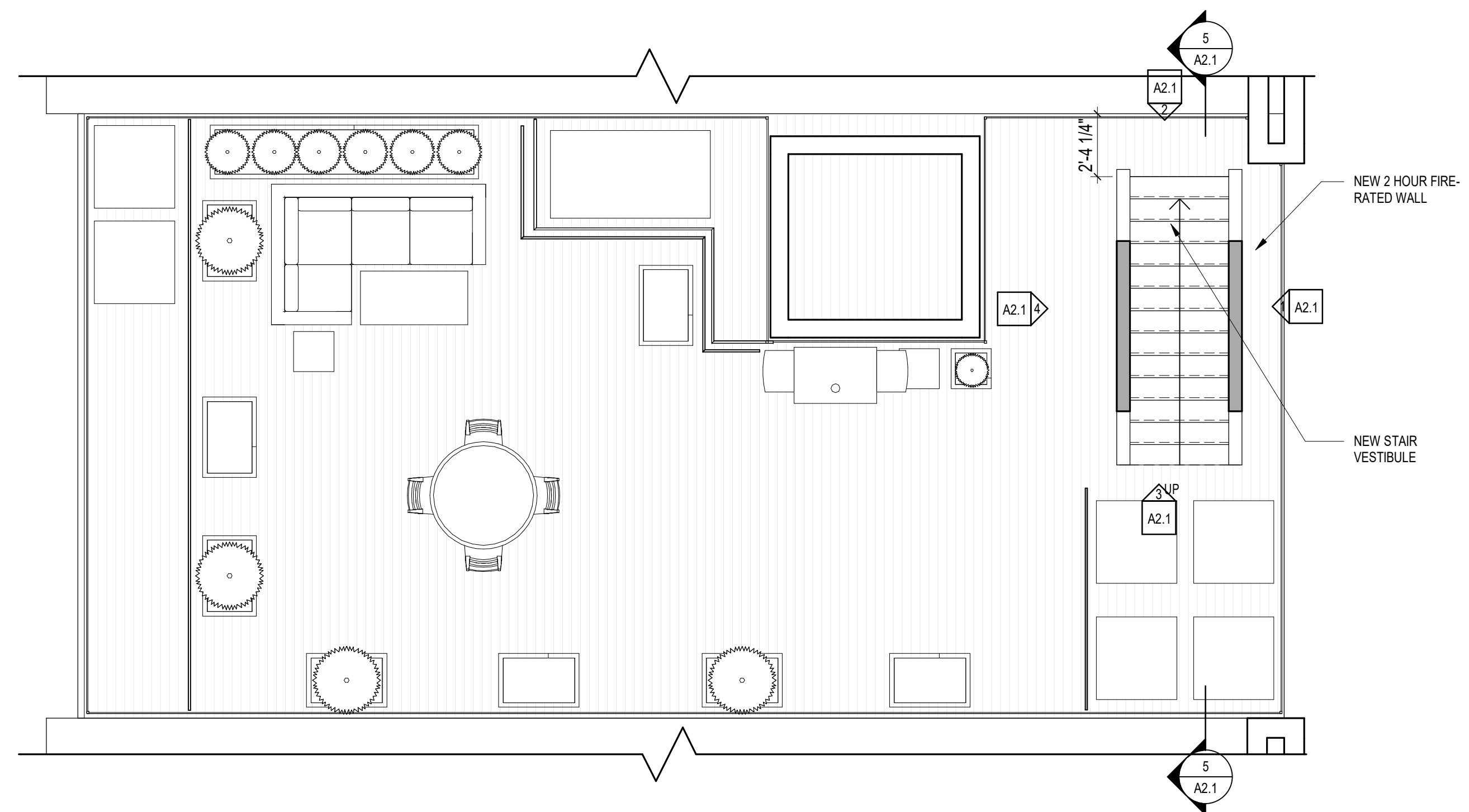
4 HATCH PLAN PROPOSED
3/4" = 1'-0"

CONDITIONS LEGEND

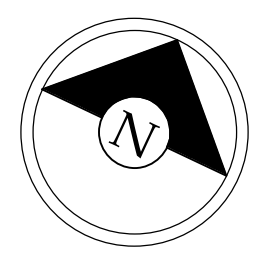
NEW CONSTRUCTION	
EXISTING TO REMAIN	
DEMOLISHED	
2hr FIRE RATED PARTITION	



1 PARTIAL ROOF PLAN EXISTING
1/4" = 1'-0"



3 PARTIAL ROOF PLAN PROPOSED
1/4" = 1'-0"



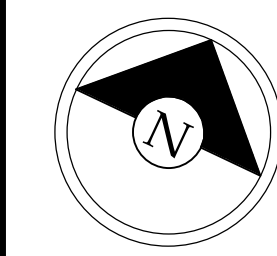
Timothy Burke
ARCHITECTURE
142 BERKELEY STREET, BOSTON MASSACHUSETTS 02116
P: 617.268.1332 | W: timothyburke.net | F: 617.268.1116

REV.	DATE	DESCRIPTION

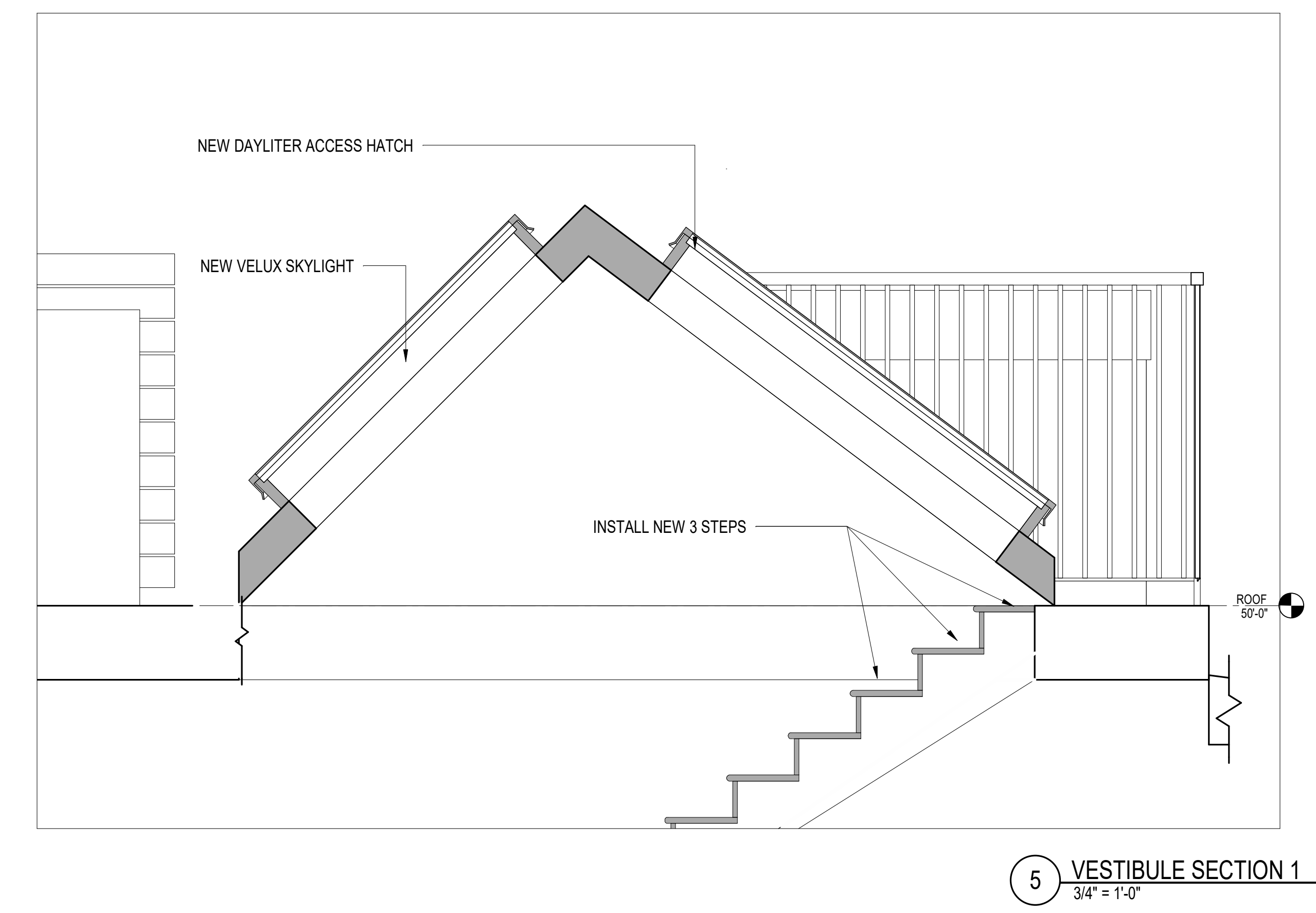
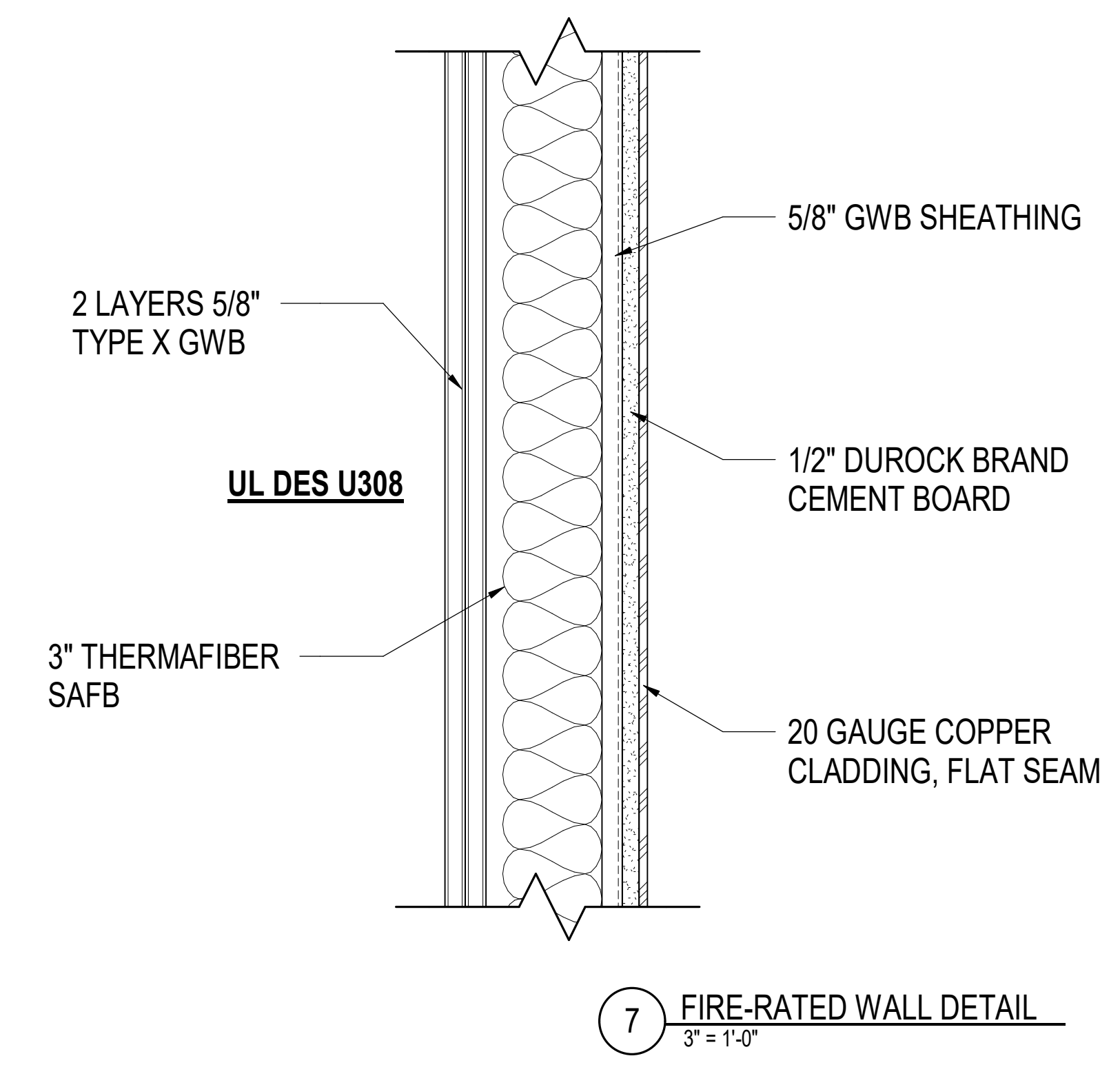
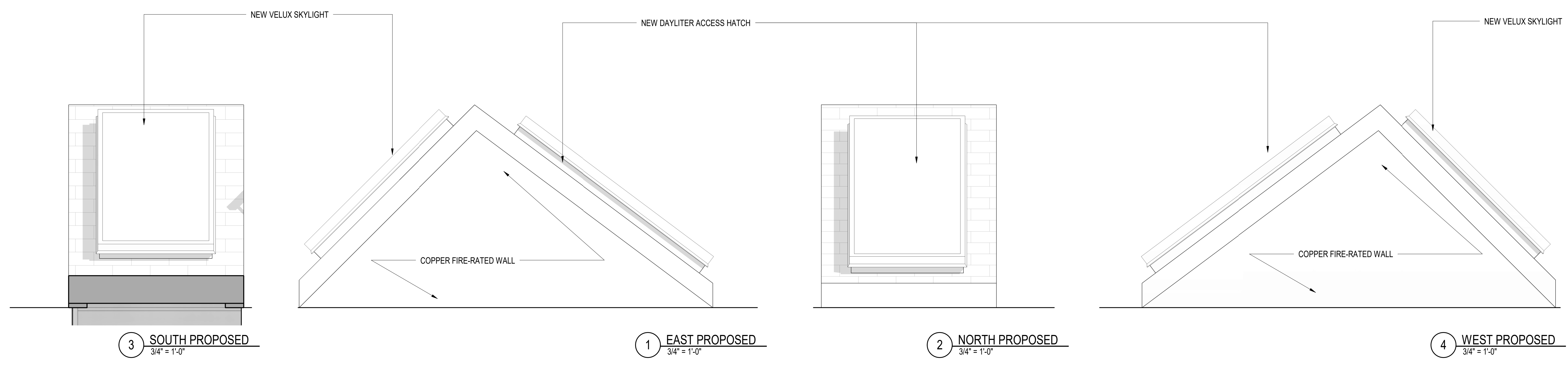
FLOOR PLANS AND
AXONOMETRICS

341 Marlborough St
Boston, MA 02115

A1.1



REV.	DATE	DESCRIPTION





341 Marlborough Street Revised hatch mock up 9-17-21