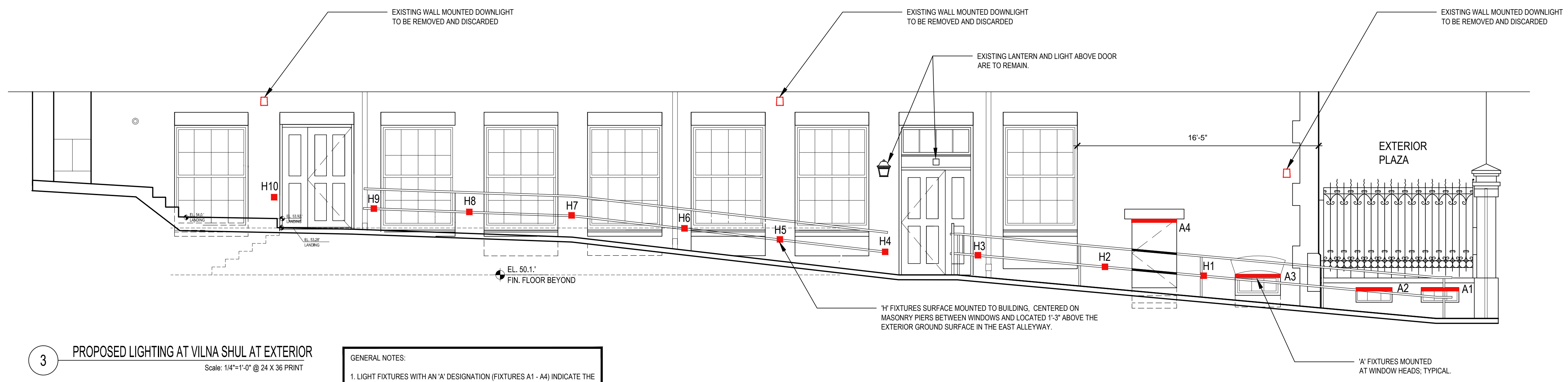


1 NEW LIGHTING - PLAN
 Scale: 1/4"=1'-0" @ 24 X 36 PRINT



3 PROPOSED LIGHTING AT VILNA SHUL AT EXTERIOR
 Scale: 1/4"=1'-0" @ 24 X 36 PRINT

GENERAL NOTES:
 1. LIGHT FIXTURES WITH AN 'A' DESIGNATION (FIXTURES A1 - A4) INDICATE THE "ATOM ENCAPSULATED MICRO 5 SERIES" LINEAR FIXTURE. THESE FIXTURES ARE MOUNTED AT THE WINDOW HEADS.
 2. LIGHT FIXTURES WITH AN 'H' DESIGNATION (FIXTURES H1 - H10) INDICATE THE "HEVI-LITE HL-1181" WALL MOUNTED FIXTURE; MOUNTED 1'-3" ABOVE THE GROUND SURFACE AND CENTERED BETWEEN THE WINDOWS.

SPECIFICATIONS

DESCRIPTION:

Compact wedge shaped step light. Suitable for wet/damp/dry location installations.

MATERIAL:

Standard overall material is 6061 aluminum.
HL-1181 - Machined Aluminum (Standard)
HL-1181-1 - Machined Stainless Steel
HL-1181-2 - Machined Brass

FINISH:

AA - Anodized Satin Aluminum
AP - Powder Coat Aluminum
BK - Powder Coat Black
BZ - Powder Coat Bronze
WT - Powder Coat White
N - Natural, for Stainless Steel and Brass

HALOGEN LAMPING OPTION:

Lamp Type - 12V halogen T3 lamp, bi-pin G4 base, 35W max, included (20W Xenon lamp included when halogen is not specified).

10 - 10W lamp
20 - 20W lamp
35 - 35W lamp

LED OPTIONS:

Integral high output LED, warm white (3000K CCT) standard, others available.

1LED - 1W LED
3LED - 3W LED

VOLTAGE:

12 - 12 VAC output transformer required, not included.

MOUNTING:

Mounts directly to standard single-gang electrical junction boxes.

SAMPLE ORDER SPECIFICATION:

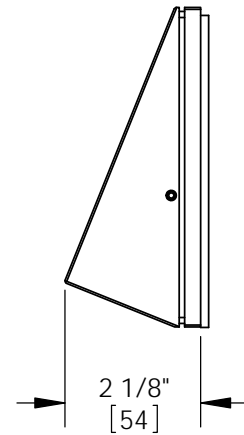
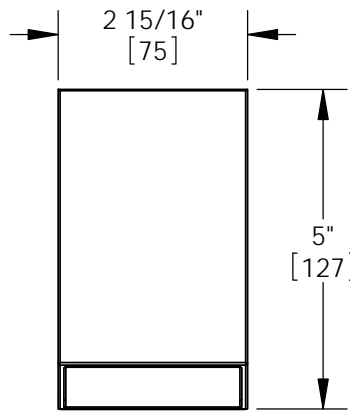
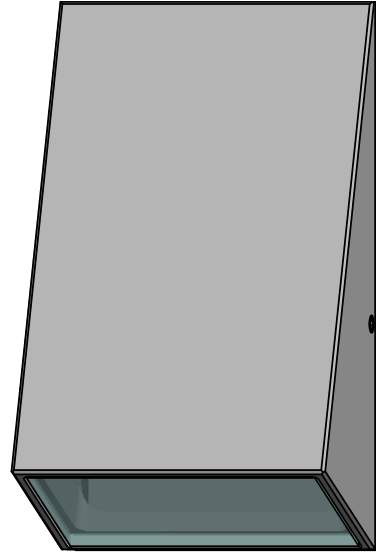
HL-1181-AA-12

RATING:

Wet/damp/dry location.



MADE IN THE USA

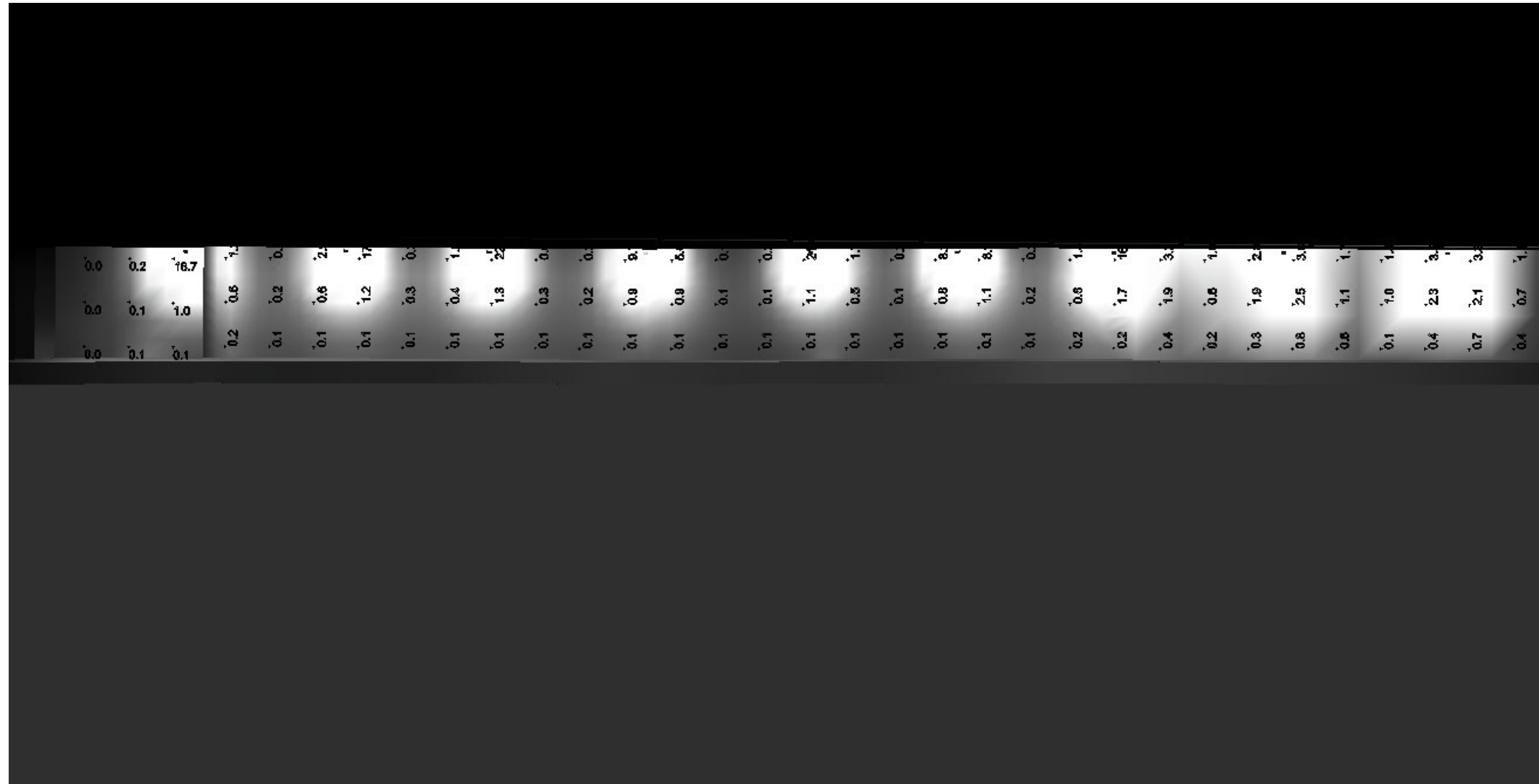


ORDER SPECIFICATION: _____ - _____ - _____ - _____ - _____
Fixture Finish Lamping Voltage Options/Access.

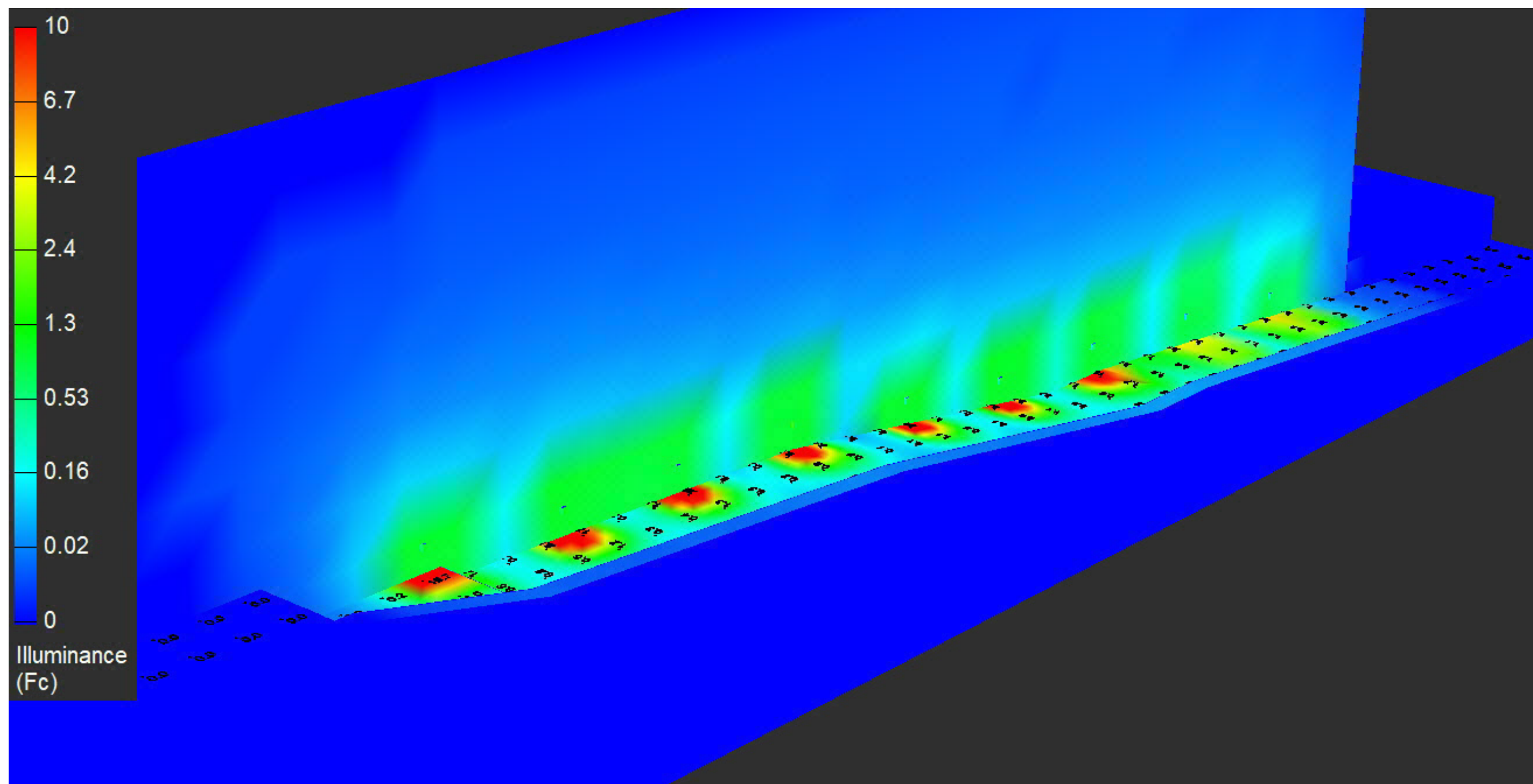
PROJECT: _____
APPROVED: _____
NOTE: _____
TYPE: _____

HEVI LITE, INC.
 9714 Variel Ave, Chatsworth, CA 91311
 Tel., (818) 341-8091 - Fax (818) 998-1986
 Web Site <http://www.hevilite.com>

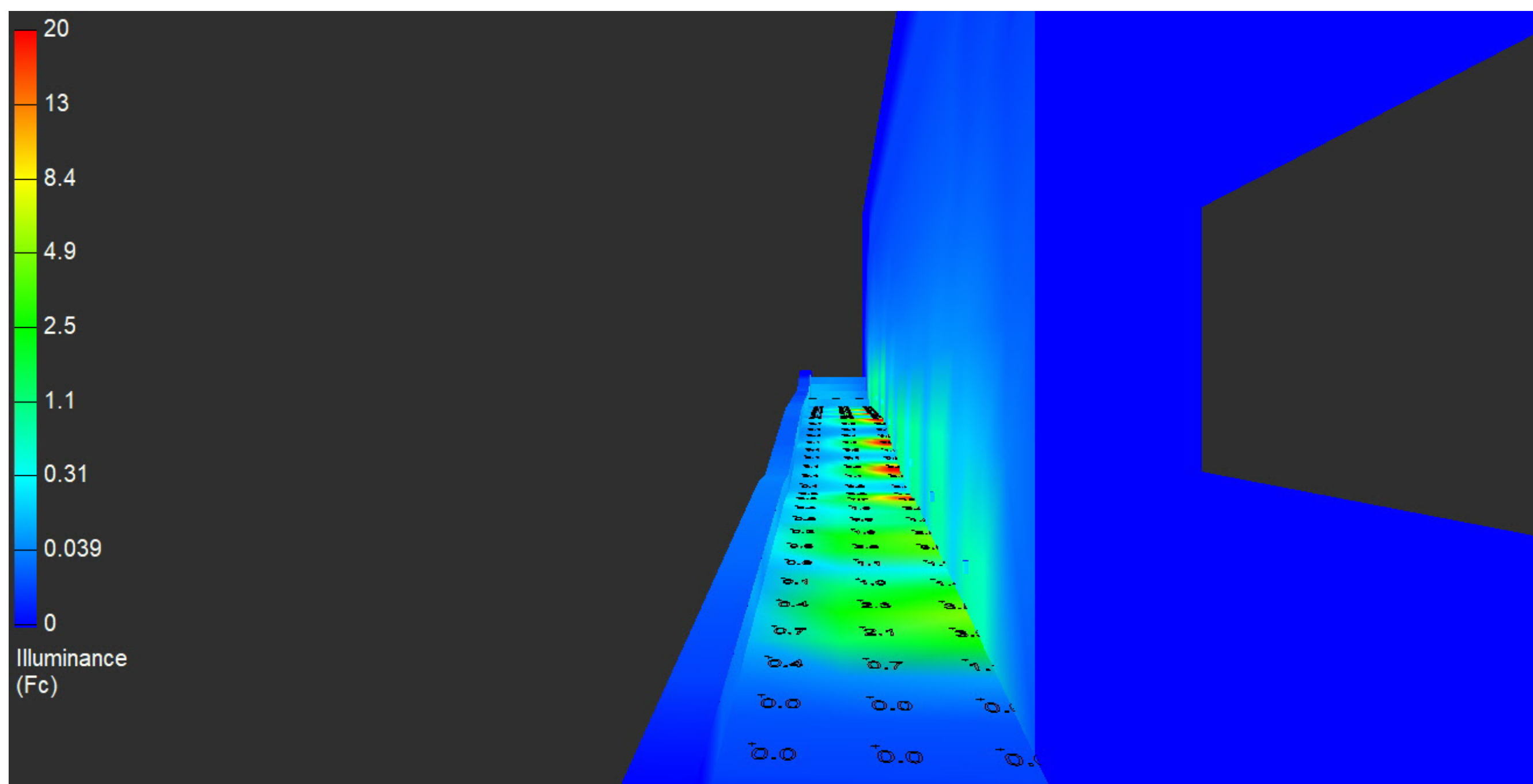
CATALOG NUMBER:
HL-1181



RenderViewpoint_1



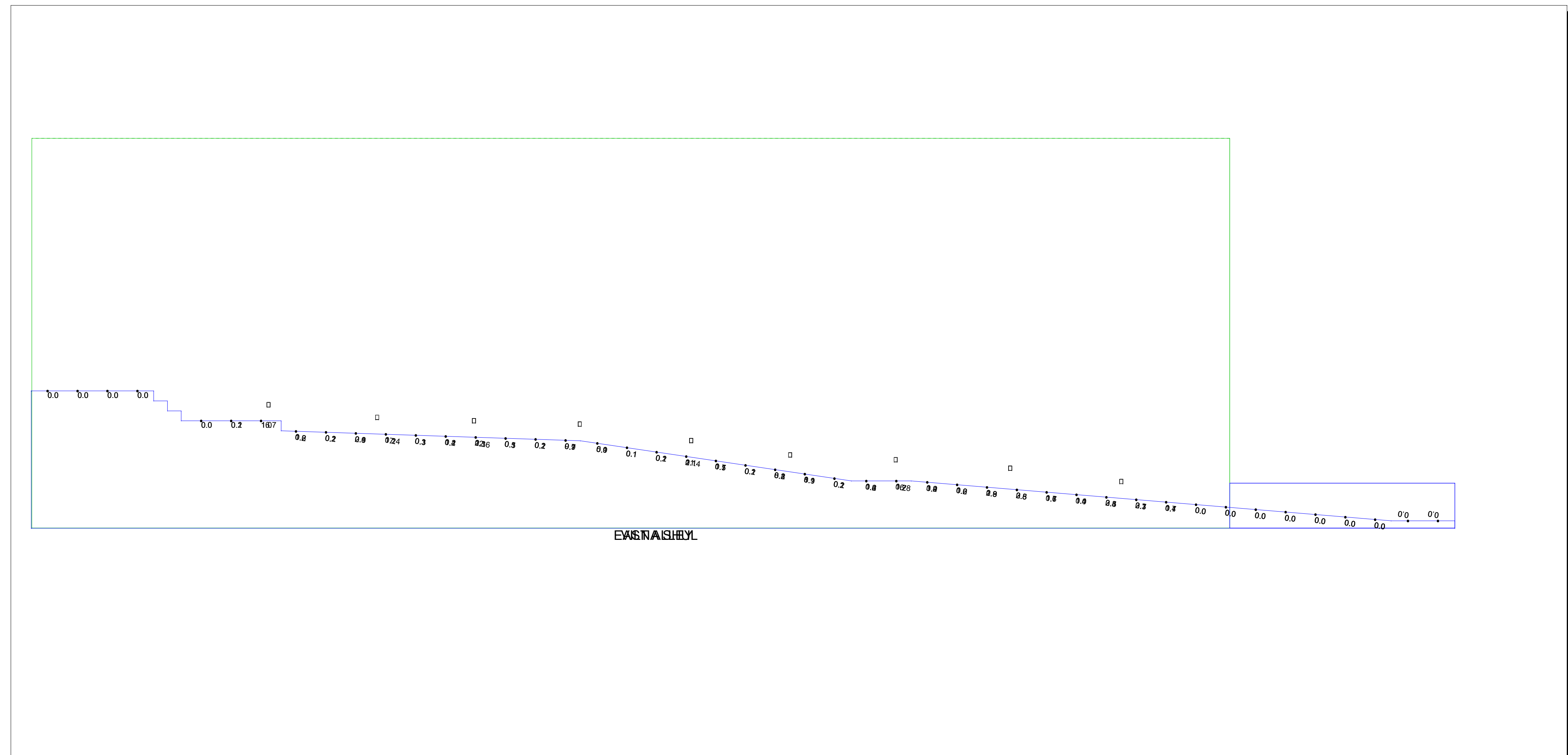
RenderViewpoint_2



RenderViewpoint_3



PLAN VIEW



ELEVATION

GENERAL DISCLAIMER:

Calculations have been performed according to IES standards and good practice. Some differences between measured values and calculated results may occur due to tolerances in calculation method, testing procedures, component performance, measurement techniques and field conditions such as voltage and temperature. Input data used to generate the attached calculations such as room dimensions, reflectance, furniture and architectural elements significantly affect the lighting calculations. If the real environmental conditions do not match the input data, differences will occur between measured values and calculated values.
* ILLUMINANCE DATA FROM IES LUMINAIR

NOTE TO REVIEWER:

Total Light Loss Factor (LLF) applied at the time of design is determined by applying the Lamp Lumen Depreciation (LLD) from current lamp manufacturer's catalog, a Luminaire Dirt Depreciation Factor (LDD) based on IES recommended values and a Ballast Factor (BF) from current ballast specification sheets. Application of an incorrect Light Loss Factor (LLF) will result in forecasts of performance that will not accurately depict actual results.

For proper comparison of photometric layouts, it is essential that you insist all designers use correct Light Loss Factors.

REVISIONS:

REV. xx



20-30 BEARVER ROAD
WETHERFIELD, CT 06199
TELEPHONE 860.632.8786
FACSIMILE 860.632.8296

PROJECT TITLE:

VILNA SHUL

DRAWING TITLE:

**EAST ALLEY - LOW LEVEL LIGHTING
PHOTOMETRIC CALCULATION**

SCALE: NTS

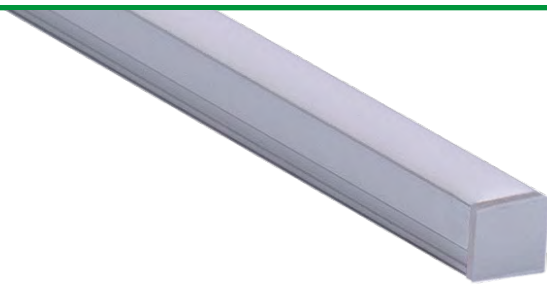
DATE: 07/13/21

DRAWN BY: DP

SHEET:

L-2

ATOM-ENCAPSULATED (03) Linear Fixtures - MICRO 5 SERIES



Synonymous with its name, the new ATOM-ENCAPSULATED (03) Micro 5 Series is 60% smaller than TORQ making it one of Q-Tran's smallest linear fixtures. An encapsulated lens complements ATOM's modern and discreet design to provide optimally delivered lumens, making it ideal for surface-mounted or recessed installations that call for low-profile light in small areas. Available in satin or black finishes and encapsulated in clear or translucent.

Part Number Builder

Static White



Product	W/FT	CCT	Rated	Lens	Input/Output	Connector/Wire In	Connector/Wire Out	Wire Color	Wire Type	Mounting	Finish	Length* (in)
ATOM-03-SW			ENC							SST		
Voltage: 24 VDC	1.0 2.0 4.0	24 27 30 35 40	ENC (IP67)	CL TL	S1 S2	BW BRL CON6 CON24	CLS	WH BK N/A	CL2 CL2P N/A	SST	ST BK	
Typical lumens at 4.0W/ft with CL at 3000K: 202 lm/ft					Single (Closed exit) P1 P2	BW BRL CON6 CON24	BW BRL CON6 CON24					
					Pass through							

*Available in 1" increments. Maximum length of 98.43" not including end caps. Tolerance +0.0"/-0.5. Minimum fixture length 6".

RGB



Product	W/FT	CCT	Rated	Lens	Input/Output	Connector/Wire In	Connector/Wire Out	Wire Color	Wire Type	Mounting	Finish	Length* (in)
ATOM-03-RGB	4.0	RGB	ENC									
Voltage: 24 VDC			ENC (IP67)	CL TL	S1 S2	BW BRL CON6 CON24	CLS	WH BK N/A	CL2 CL2P N/A	SST	ST BK	
Typical lumens at 4.0W/ft with CL at 3000K: 83 lm/ft					Single (Closed exit) P1 P2	BW BRL CON6 CON24	BW BRL CON6 CON24					
					Pass through							

*Available in 2" increments, maximum fixture length of 98". See fixture detail on page 5. Minimum fixture length 6".

- If selecting **BRL**, select **N/A** for wire color and type
- **BW** comes in standard 24"- request custom length (Max 120") by writing it in inches next to "BW" in the order code box (ex. BW48)
- **Connector/Wire In or Out** not needed to specify product. Standard configuration is Type S1, Connector/Wire In: BW & Connector/Wire Out: CLS
- Specify **CL2P** for plenum rated wire

<ul style="list-style-type: none"> • 5 year warranty • Field modifications void warranty 	<ul style="list-style-type: none"> • Data subject to change, all data has +/- 5% tolerance • Compatible for use with Q-Tran power supplies
--	--

ATOM-ENCAPSULATED (03) Linear Fixtures - MICRO 5 SERIES



Technical Information Delivered lumens

Static White [Calculated L70 = 70000 hrs]
Tested with ATOM-03-SW-**-30-DRY-**

SW	1.0W/FT		2.0W/FT		4.0W/FT	
	LM/FT	CRI	LM/FT	CRI	LM/FT	CRI
CL	34	97	91	98	202	98
TL	28	95	74	95	163	95

RGB [Calculated L70 = 55000 hrs]
Tested with ATOM-03-RGB-DRY-STD

RGB	Red		Green		Blue	
	LM/FT	Wavelength	LM/FT	Wavelength	LM/FT	Wavelength
CL	26	630	83	523	25	470
TL	20	629	59	522	19	469

Temperature Ratings

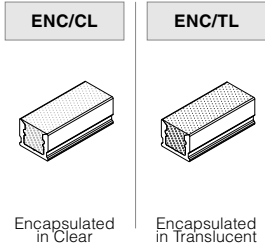
Wattage	Mounting	Minimum Limit (°F)	Maximum Limit (°F)
1W/ft	Surface Mount	-4	130
	Millwork	-4	122
2W/ft	Surface Mount	-4	122
	Millwork	-4	113
4W/ft	Surface Mount	-4	113
	Millwork	-4	104

ATOM-ENCAPSULATED (03) Linear Fixtures - MICRO 5 SERIES



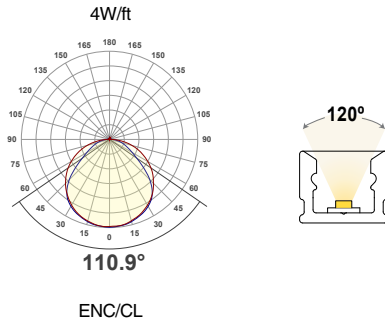
Lens

with LED visibility



Beam Angle

NOTE: Nominal beam spread shown, beam spread varies based on light engine. For more detailed information, see IES PDF file.



Finish

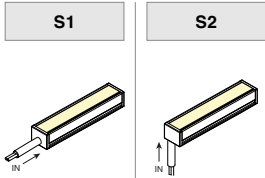


Mounting

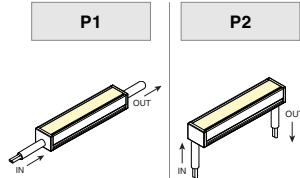


Input/Output

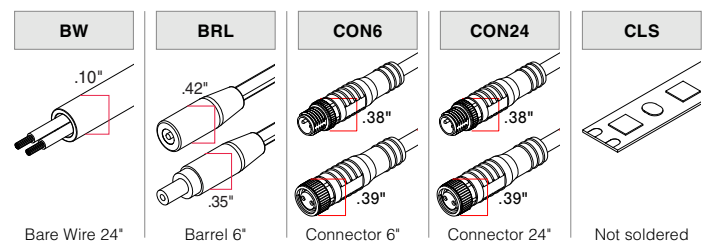
SINGLE (Input only)



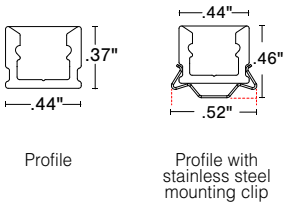
PASS THROUGH (Input/Output)



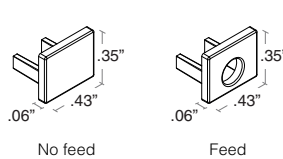
Connector/Wire – In/Out



Dimensions



End Caps



Light Engine Spacing Detail

