



# Related Beal Construction

Related Beal  
March 17<sup>th</sup>, 2021

Boston Employment Commission  
Presentation

# Kenmore Square, Beacon Building 650-660 Beacon Street Boston

Of the original parcel of four buildings at this location only 660 Beacon Street (previously Boston University book store) will remain and receive a substantial interior renovation. The other three buildings have been demolished and will be replaced by a mixed use seven storey addition to 660 Beacon Street comprising of the following:-

- First floor / basement restaurant / retail / amenity spaces
- Six upper levels of core / shell / office / lab space
- Mechanical penthouse level

# Project Team

## Related Beal Construction – Executive Construction Manager Team (ECM):

- Brian Radomski (VP of Construction)
- Michael Morrow (Senior Project Manager)\*
- Tony Coward (Senior Superintendent)

## Commodore Builders – Construction Manager Team (CM):

- Paul Maneen (Project Manager)\*
- Edward Corey (Superintendent)
- Kellie Thompson (Project & BRJP Administration)\*

\* Indicates present at today's meeting

# Renderings



# Construction Schedule

2021

- Q1 – Demolition & Sitework
- Q2 – Sitework, Foundations & Concrete
- Q3 – Structure & Facade
- Q4 – Façade and MEP

2022

- Q1 – MEP Finishes & Interior
- Q2 – Landscaping & Interior Finishes
- Q3 – Inspections, Testing & Occupancy

# Construction Buyout (Awarded Subcontractors)

HUB Foundations

Select Demolition

Welch Corporation

Sunrise Erectors

Trimax Structural Steel

New Hampshire Steel Fabricators

Manafort Precision

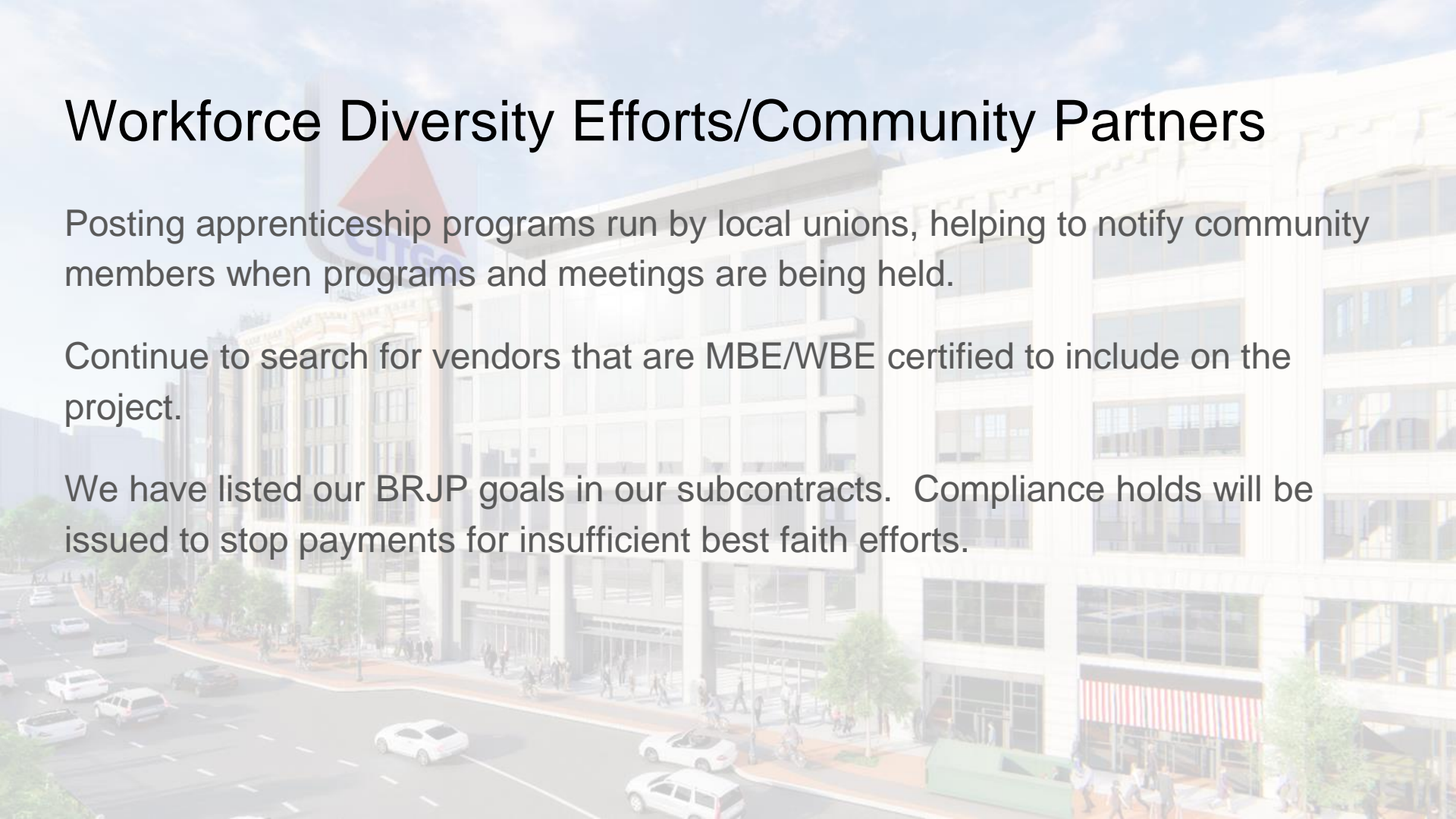


# Workforce Diversity Efforts/Community Partners

Posting apprenticeship programs run by local unions, helping to notify community members when programs and meetings are being held.

Continue to search for vendors that are MBE/WBE certified to include on the project.

We have listed our BRJP goals in our subcontracts. Compliance holds will be issued to stop payments for insufficient best faith efforts.



# List of M/WBE Contractors

The project team has assembled a list of pre-qualified M/WBE contractors. M/WBE contractors are included on our bid lists and will have the opportunity to bid on the project.

Current Employment - Rebars & Mesh, Inc – WBE (Subcontractor to Manafort Precision)

Potential Opportunities (contractors such as):

- Specialties (Division 10 Specialties)
- Final Cleaning (Front Line)
- Elevator Finishes (sub of a sub - EID)
- Roofing (Titan Roofing)
- Final Cleaning (Front Line)
- Elevator Finishes (sub of a sub - EID)
- Landscaping - Xquisite



# Job Application Process

An Application for Employment Board has been set up at the Entrance of the Project with Blank Applications for interested parties to complete. A QR Code has also been included for any interested parties to scan with Applications going directly to Commodore Builders for circulation.

All Applications for Employment will be sent via email to the Project Managers of all Subcontractors that employ the Trade for review as well as the Boston Jobs Banks Coordinator.

