

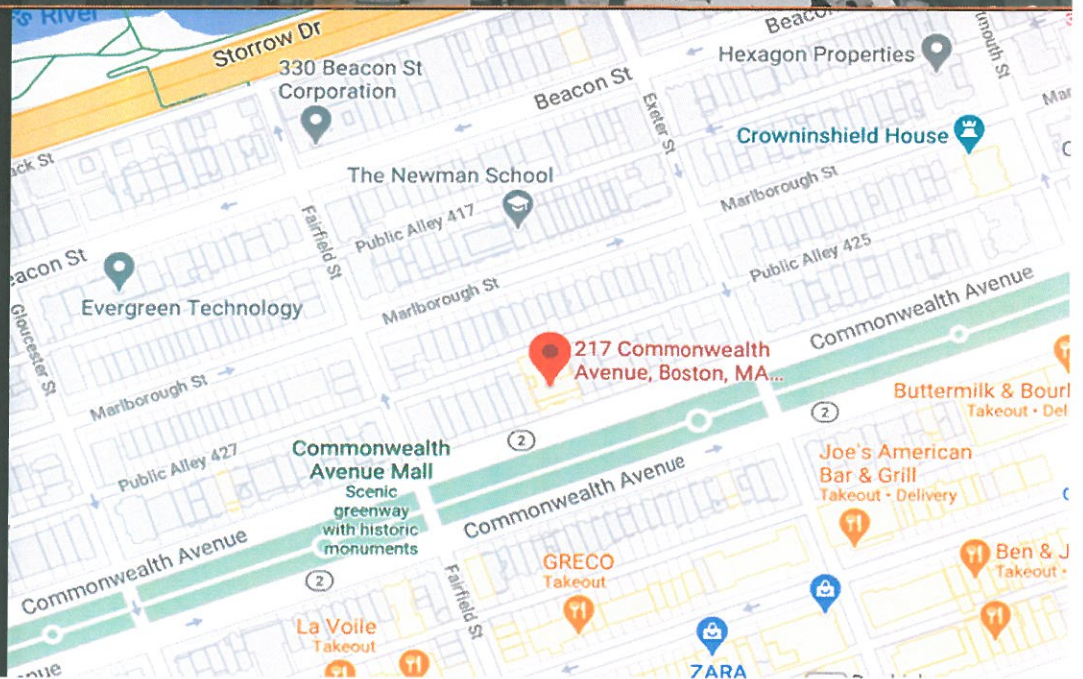
# The Algonquin Club aka The 'Quin House

Exterior Sign Package

Presented by

Metro Sign & Awning

217 Commonwealth Ave.  
Boston, MA 02116



# LOC 1: Dimensional Letter Set Brass Logo with Polished Alloy Finish

**NOTES** **LOC 1**

**DIMENSIONAL LETTER SET**

**Quantity: 1 SET**

**A**  
.5" thick Brass logo, polished alloy finish.

**B**  
Rush stud mounted to building, 3" embd. (typ.)

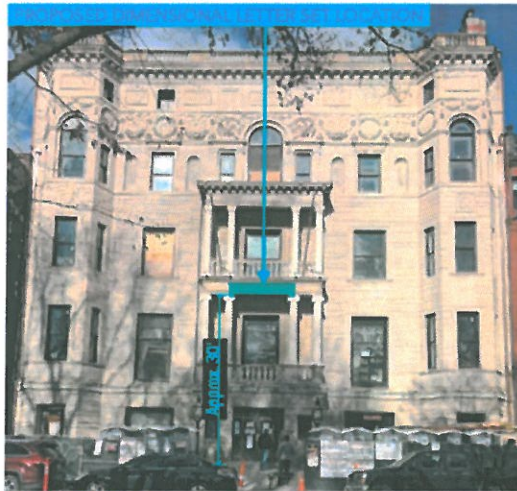
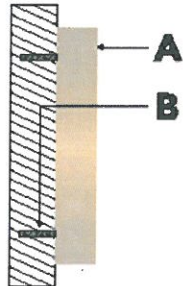
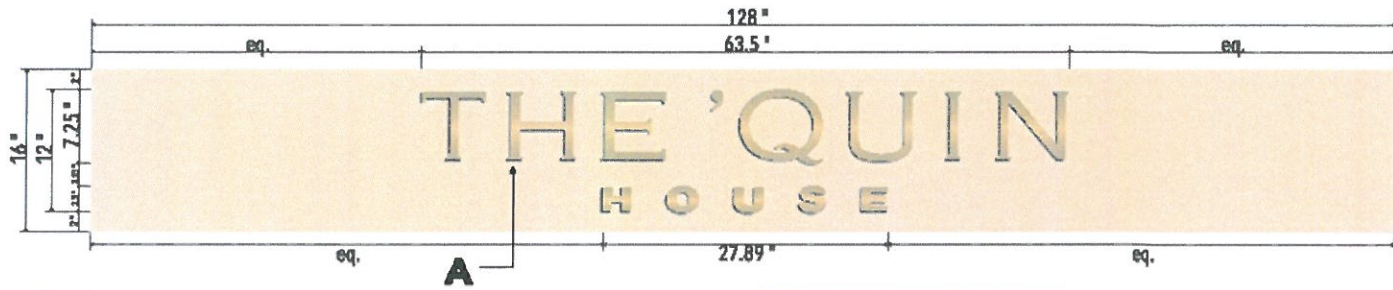
---

**SAMPLES REQUIRED**  
Sample of one letter.

Sign Sq Ptg: 3.7

RELEASE TO PRODUCTION:

Work Order:



**FINISH COLOR:**  
Polished Brass Alloy

**PROPOSED**

WWW.METROSIGN.NET    PHONE: 978.851.2424    FAX: 978.851.2022    170 LORUM STREET    TEWKSBURY MA 01876

Customer/Job Location: **Stys Hospitality**  
The Quin - Boston, MA

DWG. DATE: 2.4.2021

Approval:  Approved     Approved As Noted    Date: **2/4/2021**

Prepared by: J.E.    Designed by: J.P.    Plotted by: T.M.

File Name: **Stys Hospitality\_The Quin House\_Boston\_21-02358.fs**    Drawing #: **21-02358-1**

METROSIGN  
CREATIVE SIGNAGE SOLUTIONS

This design/drawing is copyrighted © 2001 Metro Sign & Graphics, Inc. No part of this drawing may be reproduced, copied or utilized in any fashion without written consent from Metro Sign & Graphics, Inc.

# LOC 2: Cast Stone Plaque

## Cast Stone Panel with Etched and In-Filled Gold Leaf Logo

**NOTES** **LOC 2**

**CAST STONE PLAQUE**

**Quantity: 1**

**A**  
Cast stone panel with etched and in-filled (real gold leaf) logo.

**B**  
Flush stud mounted to building, 3" embd. (typ.)

**C**  
Decorative Brass "hardware".

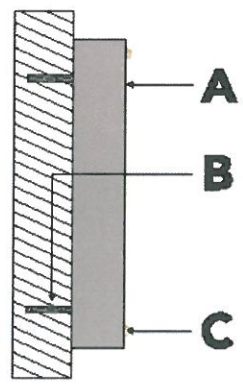
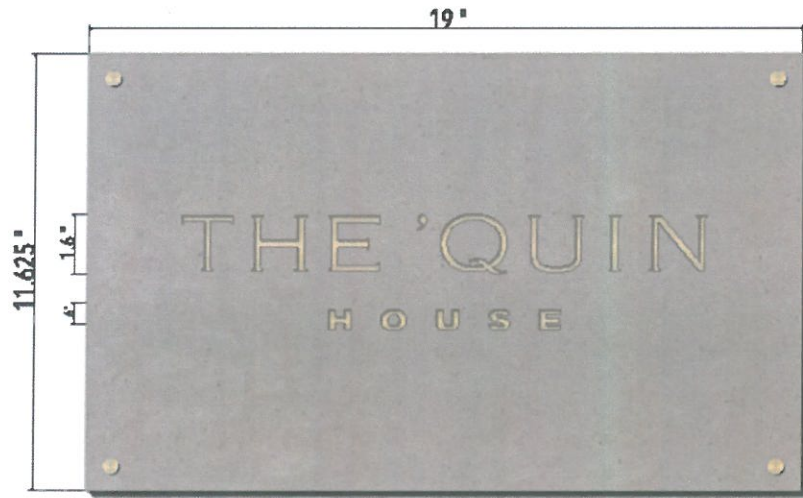
---

**SAMPLES REQUIRED**  
Sample of cast stone with gold leaf.

Sign Sq Ptg: 1.53

RELEASE TO PRODUCTION:

Work Order:



**LOGO FINISH:**  
Real Gold Leaf

**STONE FINISH OPTIONS:**

ANTIQUE	CLASSIC	CONCRETE
FLAT	SMOOTH	TEXTURED



WWW.METROSIGN.NET    PHONE: 978.851.2424    FAX: 978.851.2022    170 LORUM STREET    TEWKSBURY MA 01874

Customer/Job Location: **Stys Hospitality**  
The 'Quin • Boston, MA

DWG. DATE: 2.4.2021

Approval:  Approved     Approved As Noted     State

File Name: Stys Hospitality\_The Quin House\_Boston\_21-02350.f

Author: JIK    Designer: JP    Plots: TLU

Drawing #: **21-02350-2**

**METROSIGN**  
CREATIVE • ENGAGE • SOLUTIONS

This design/drawing is copyrighted © 2021 Metro Sign & Awning, Inc. No part of this drawing may be reproduced, copied or utilized in any fashion without written consent from Metro Sign & Awning, Inc.

# LOC 3: Cast Stone Plaque

## Cast Stone Panel with Etched and In-Filled Gold Leaf ADA Logo

**NOTES** **LOC 3**

**CAST STONE PLAQUE**

**Quantity: 1**

**A**  
Cast stone panel with etched and in-filled (real gold leaf) logo.

**B**  
Flush stud mounted to building, 3" embed. (typ.)

**C**  
Decorative Brass "hardware".

---

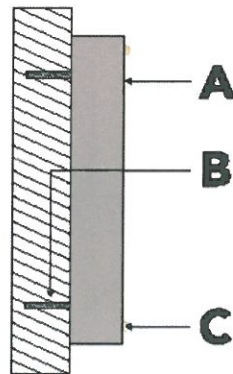
**SURVEY REQUIRED**  
Survey for available space.

**SAMPLES REQUIRED**  
Sample of cast stone with gold leaf or brass plaque.

Sign Sq Ftg: 1.53

RELEASE TO PRODUCTION:

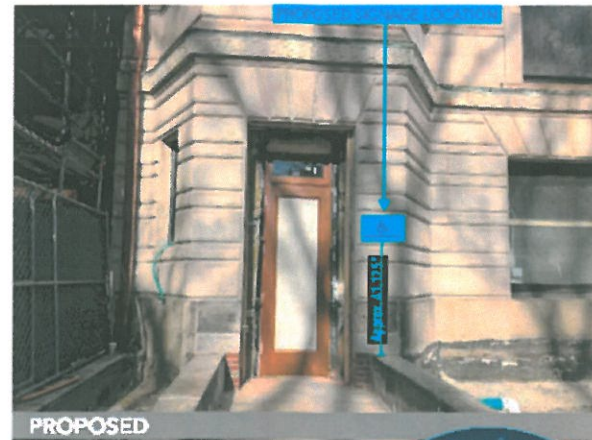
Work Order:



**LOGO FINISH:**

Real Gold Leaf

**BRASS FINISH OPTIONS:**

WWW.METROSIGN.NET      PHONE: 978.851.2424      FAX: 978.851.2022      170 LORUM STREET      TEWKSBURY MA 01876

Customer/Job Location: **Stys Hospitality**  
The 'Cub' • Boston, MA

DWG. DATE: 2.4.2021

Approval:  Approved     Approved As Noted Date: \_\_\_\_\_

File Name: Stys Hospitality\_The 'Cub' House\_Boston\_21-02358-3

Submitter: **JK**    Designer: **JP**    Project: **YTD**

Drawing #: **21-02358-3**

**METROSIGN**  
CREATIVE IMAGE SOLUTIONS

This design/drawing is copyrighted © 2021 Metro Sign & Awning, Inc. No part of this drawing may be reproduced, copied or utilized in any fashion without written consent from Metro Sign & Awning, Inc.

# LOC 4/5: Flags

## One American Flag & One 'Quin House Logo Flag

**NOTES LOC 4/5**

**FLAGS**

**Quantity: 1 of Each**

**A**  
Qty. (1) Tough Tex American flag. Hem all around, canvas heading & (2) grommets.  
Qty. (1) D/F dye sublimation on flagcloth. Hem all around, canvas heading & (2) grommets interliner.

Flags hang from existing flagpoles.

\*Note: client concerned about flag wrapping around flagpoles. Metro is researching hardware:



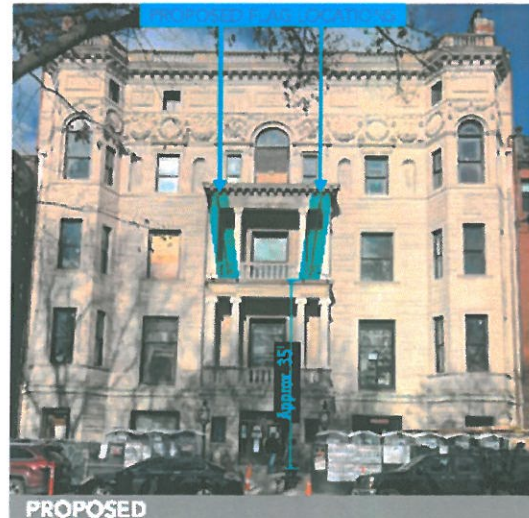
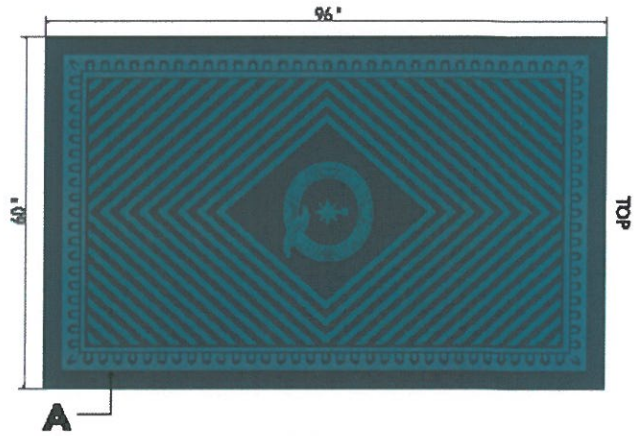
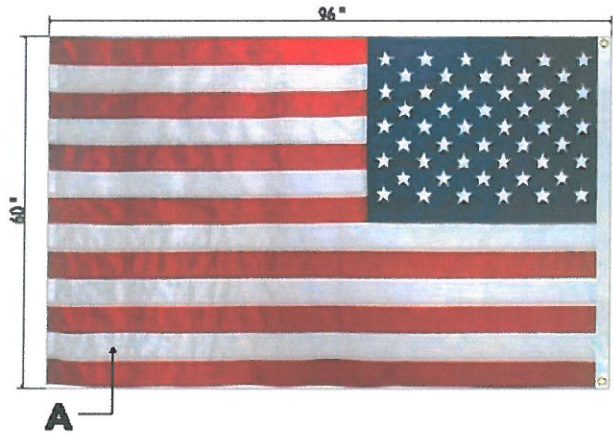
**SURVEY REQUIRED**  
Survey diameter of poles.

**SAMPLES REQUIRED**  
Sample of American flag material and full-scale section of print on flagcloth.

Sign Sq Ftg: 40

RELEASE TO PRODUCTION:

Work Order:



WWW.METROSIGN.NET    PHONE: 978.851.2424    FAX: 978.851.2922    170 LORUM STREET    TEWKSBURY MA 01876

Customer/Job Location: **Stys Hospitality**  
The 'Quin' - Boston, MA

DWG. DATE: 2.4.2021

**Approval:**  Approved  Approved As Noted  Other

Sub: JJK    Design: JP    Plot: TMM

Counting # **21-02358-4**

File Name: Stys Hospitality\_The Quin House\_Boston\_21-02358.fs

**METROSIGN**  
CREATIVE IMAGE SOLUTIONS

This drawing/drawing is copyrighted. © 2021 Metro Sign & Printing, Inc. No part of this drawing may be reproduced, copied or utilized in any fashion without written consent from Metro Sign & Printing, Inc.



Thank You!

Questions?

