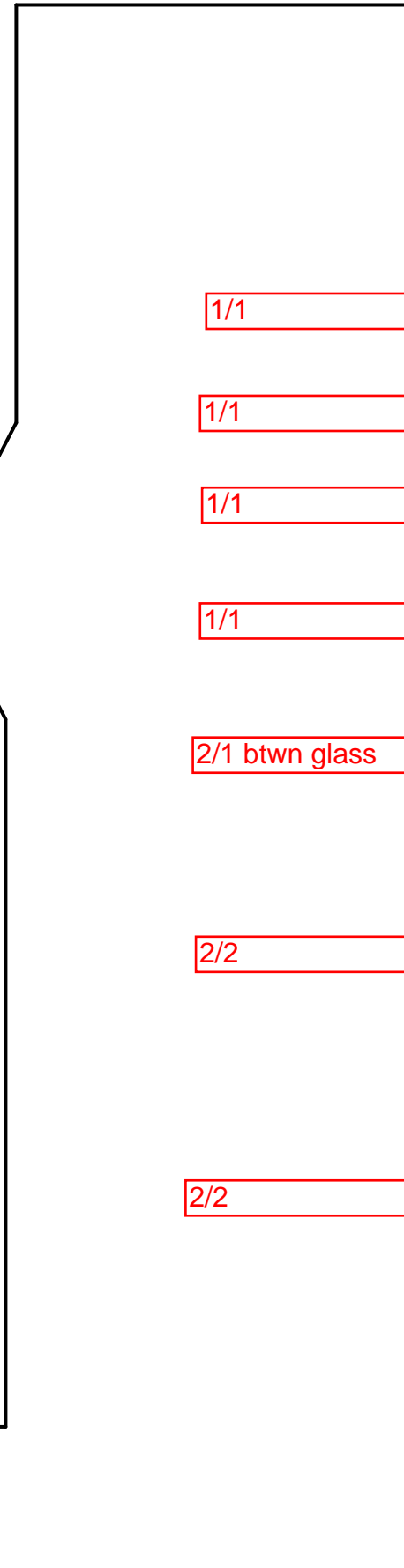


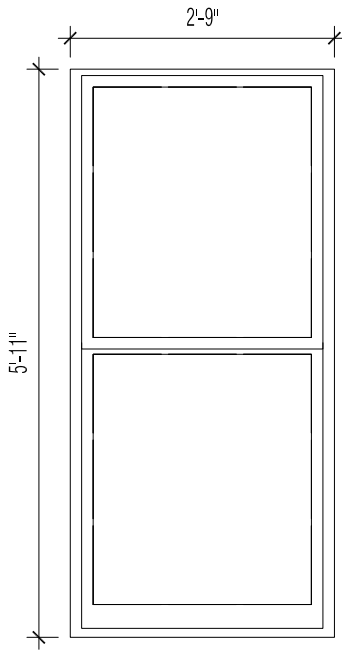
FLOOR PLAN WITH EXISTING WINDOW SIZES AND CONFIGURATIONS



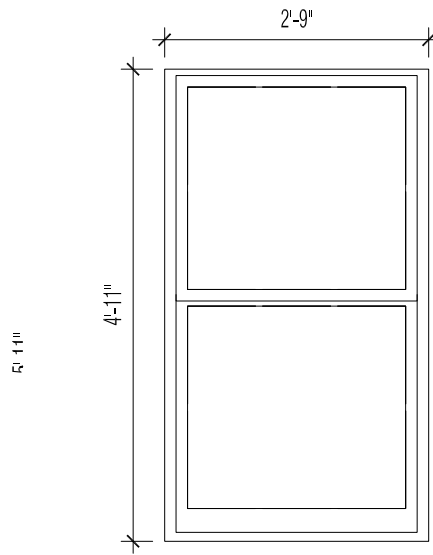
295 Commonwealth Ave #5c  
Floor Plan  
1/8" = 1'-0"



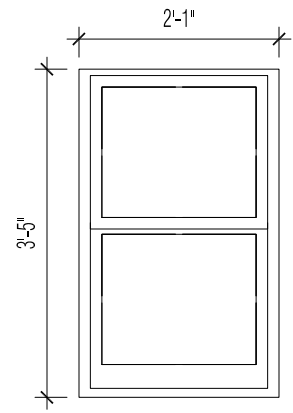
ADJACENT FACADE- EXISTING CONDITIONS



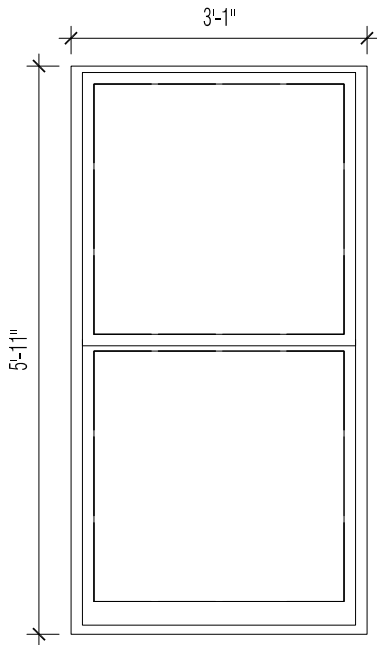
KITCHEN- K1 + K2 ALLEY FACADE



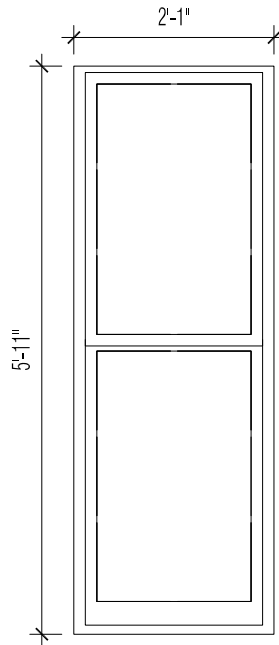
KITCHEN- K3 COURTYARD FACADE



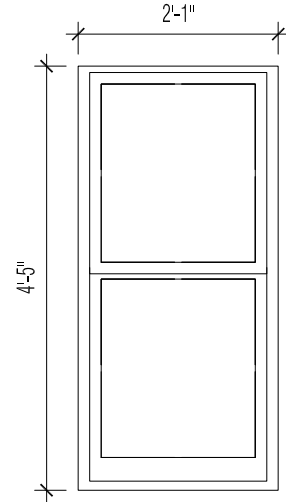
PANTRY- P1 COURTYARD FACADE



LIVING ROOM- L1 + L2 COURTYARD FACADE



BEDROOM- B1 + B2 COURTYARD FACADE

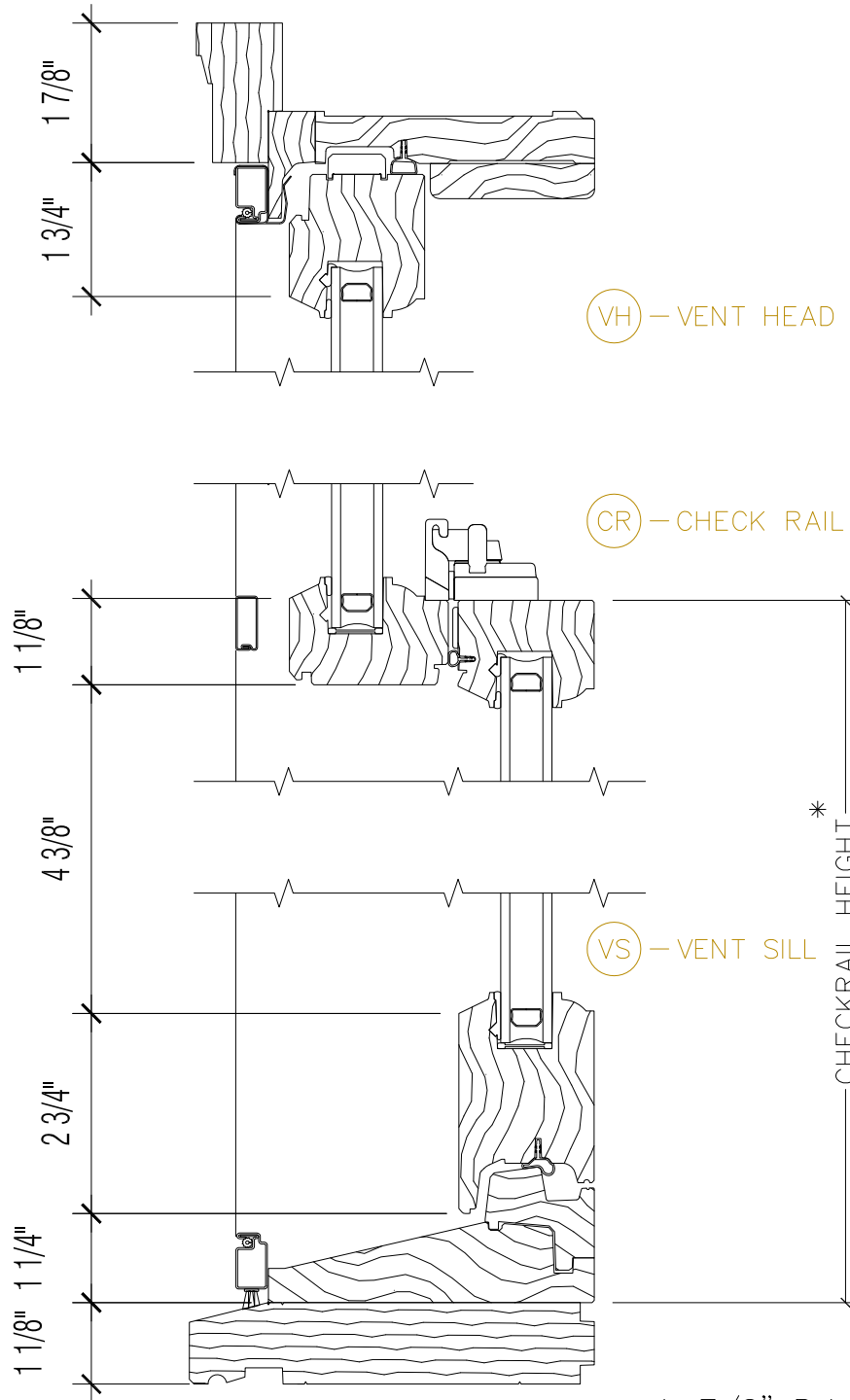
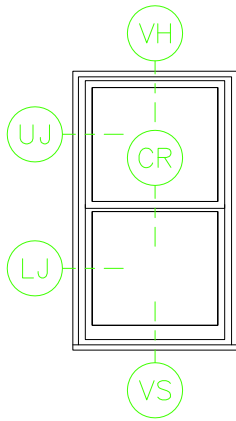


BATHROOM- WC1 COURTYARD FACADE

WINDOW SHOWN IS PELLA "RESERVE"  
SERIES ALL-WOOD DOUBLE HUNG

## 295 Commonwealth Ave #5c Window Elevations

1/2" = 1'-0"

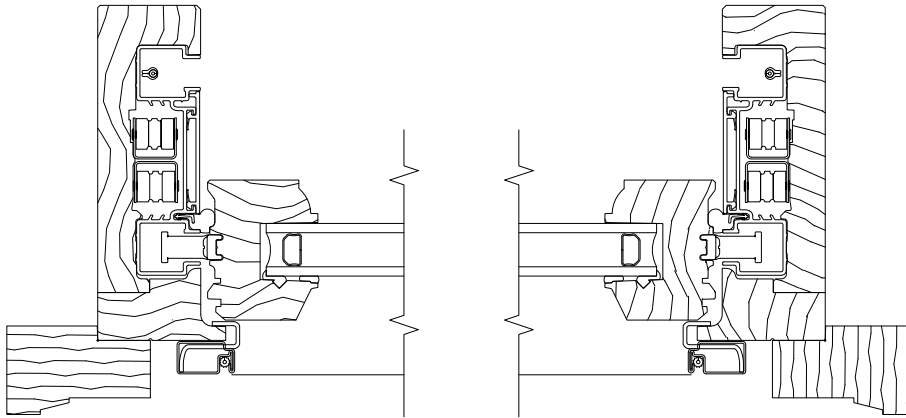


1-7/8" Brickmould  
#3443 1-1/8" Subsill  
#3544 Shown

WINDOW SHOWN IS PELLA "RESERVE"  
SERIES ALL-WOOD DOUBLE HUNG

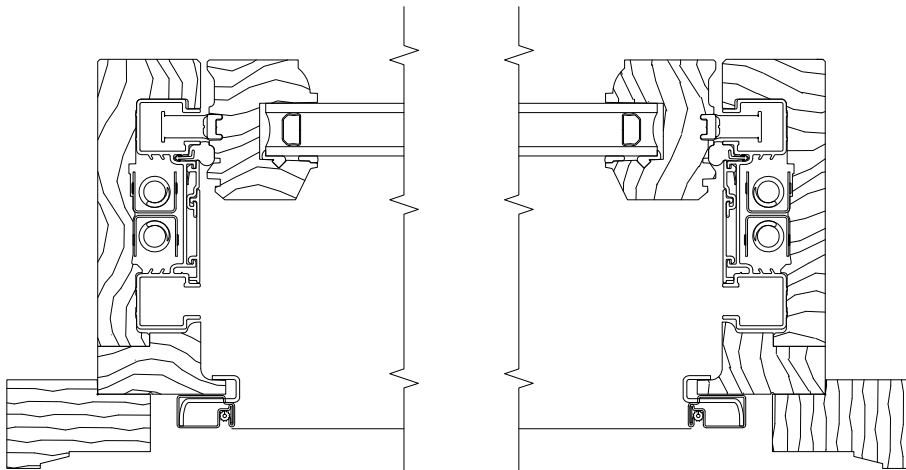
295 Commonwealth Ave #5c  
**Window Details**

3" = 1'-0"



UJ — UPPER JAMBS

\* Dimension required for ordering units with unequal sash.



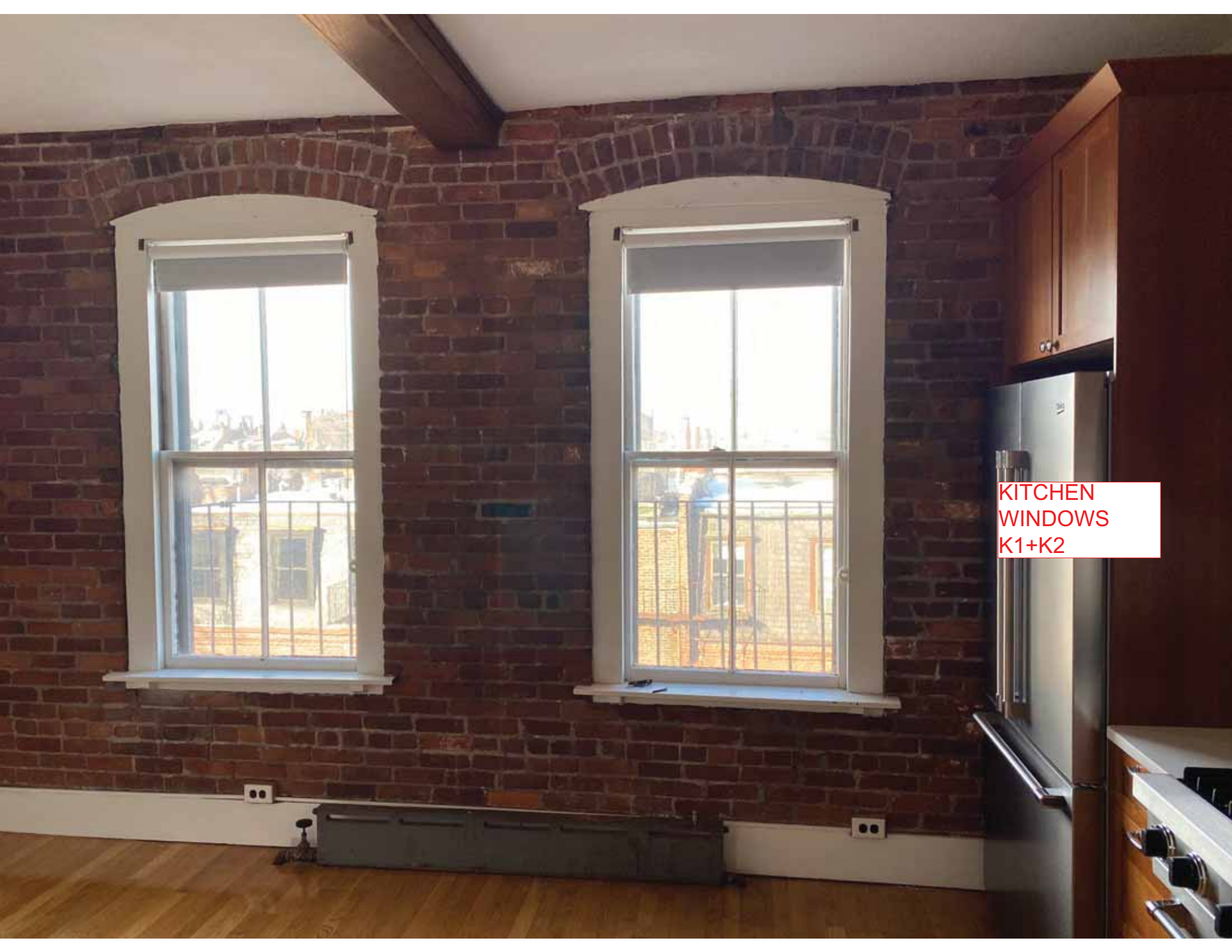
LJ — LOWER JAMBS

WINDOW SHOWN IS PELLA "RESERVE"  
SERIES ALL-WOOD DOUBLE HUNG

295 Commonwealth Ave #5c  
**Window Details**

3" = 1'-0"

12/23/20



KITCHEN  
WINDOWS  
K1+K2



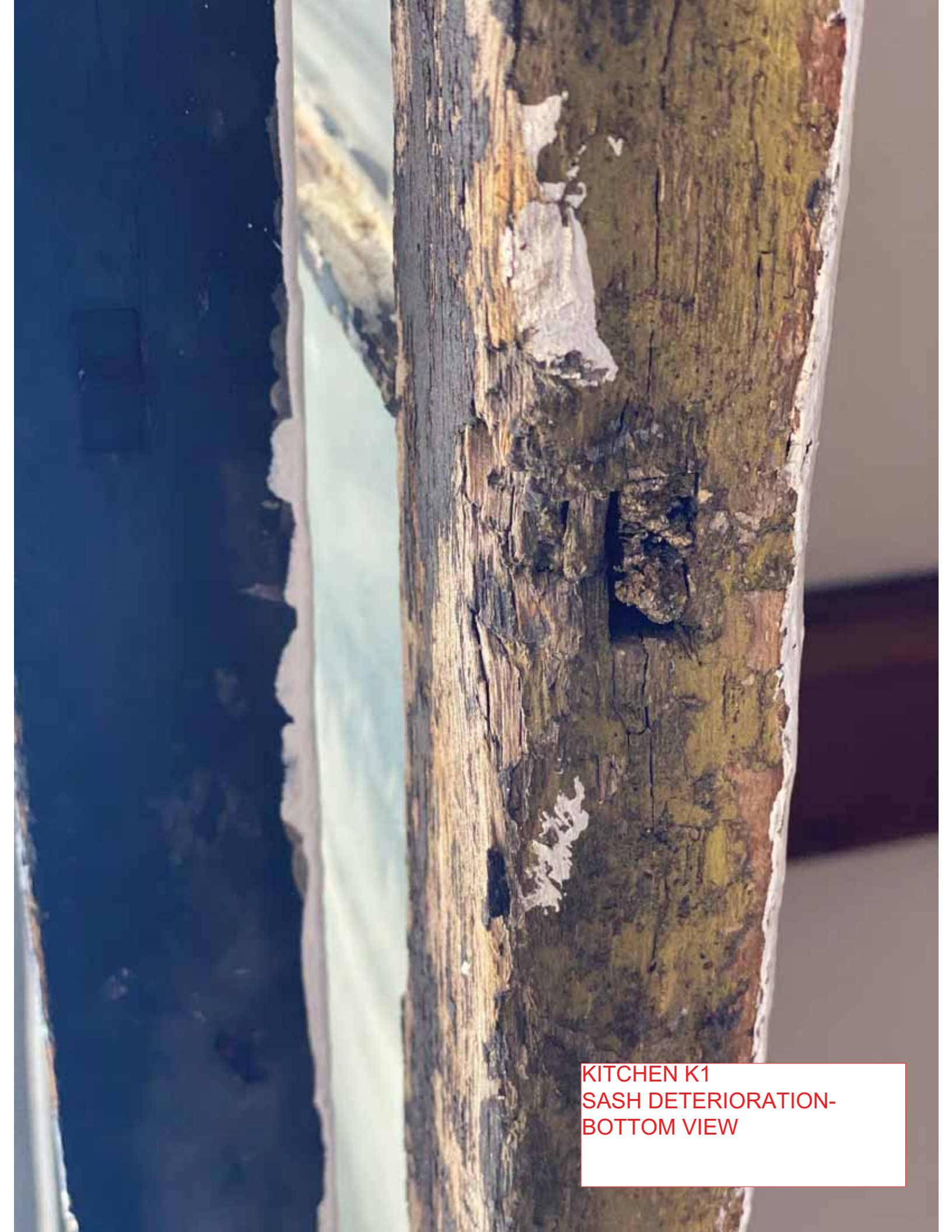
KITCHEN K1  
RAILS AND STILES  
DETACHED AND WOOD  
DETERIORATED, ESPECIALLY  
BOTTOM RAILS







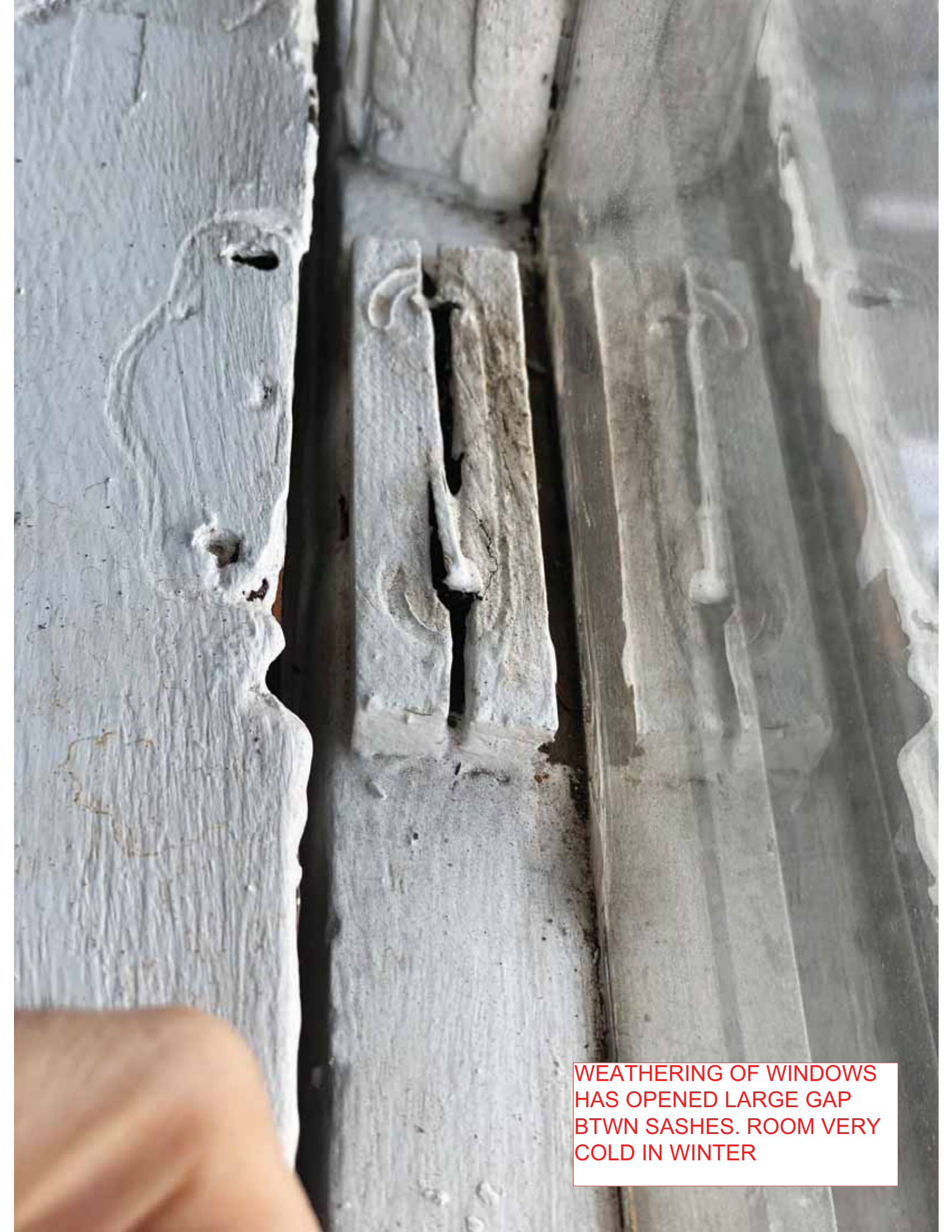




KITCHEN K1  
SASH DETERIORATION-  
BOTTOM VIEW



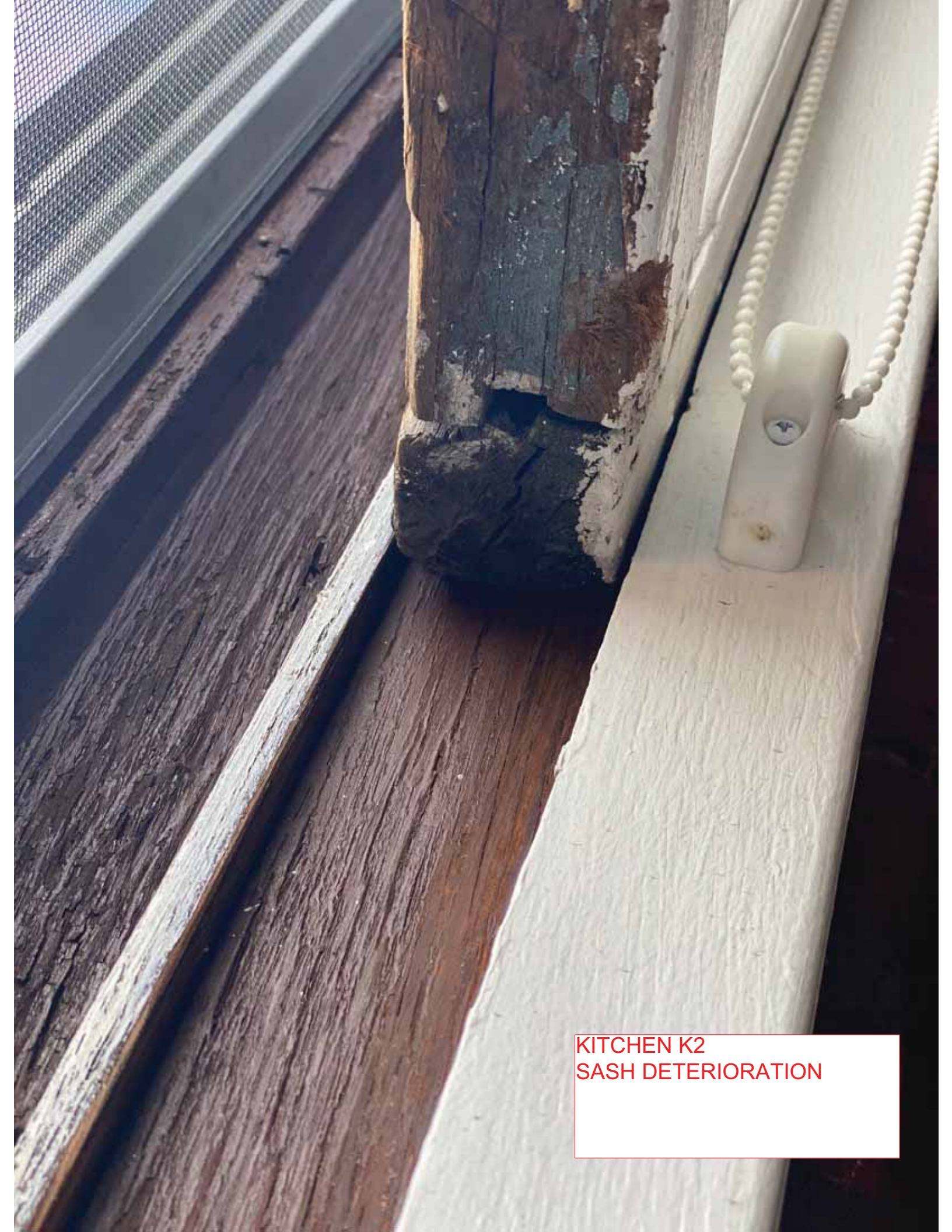
KITCHEN K1  
SASH DETERIORATION



WEATHERING OF WINDOWS HAS OPENED LARGE GAP BTWN SASHES. ROOM VERY COLD IN WINTER

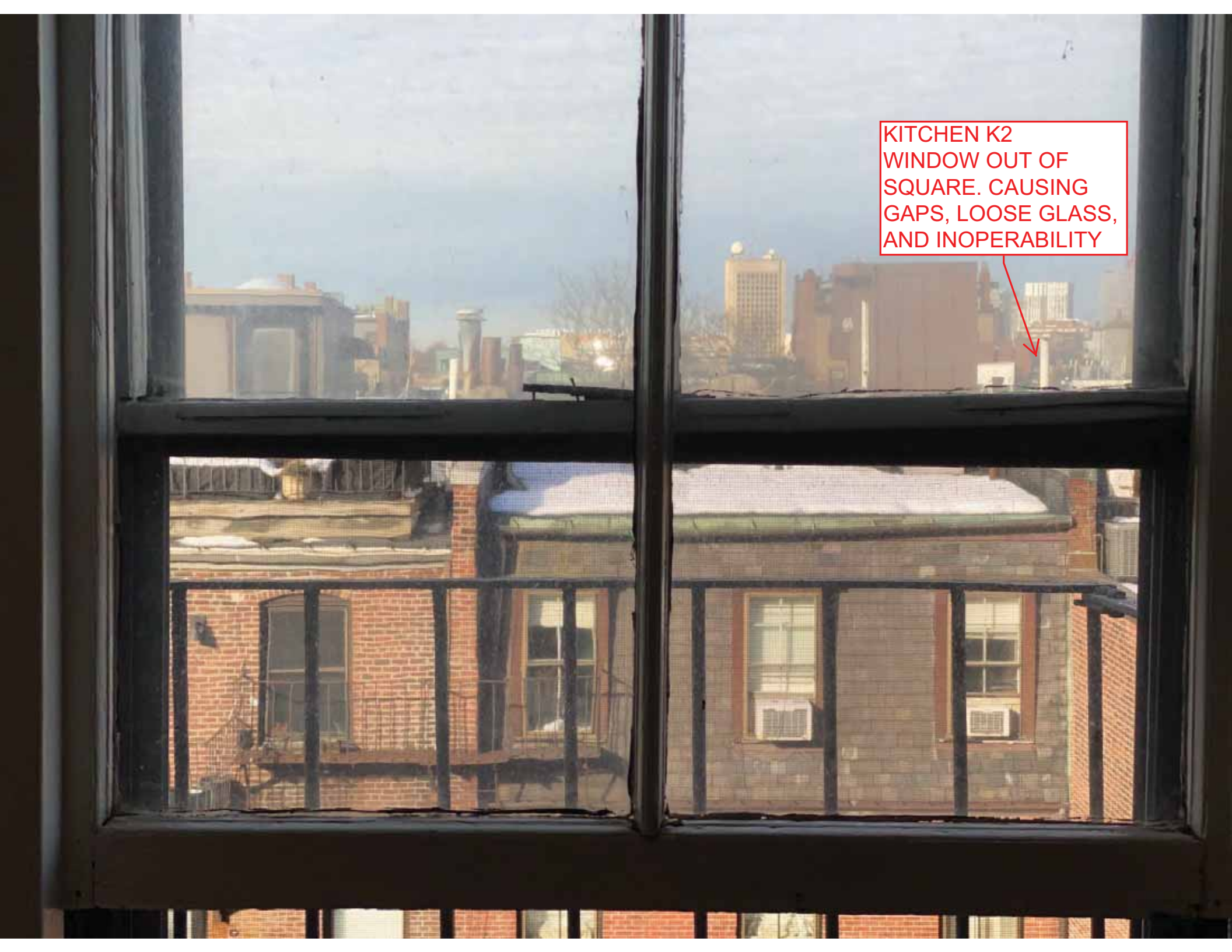


RAILS AND STILES  
DETACHED AND WOOD  
DETERIORATED, ESPECIALLY  
BOTTOM RAILS



KITCHEN K2  
SASH DETERIORATION

KITCHEN K2  
WINDOW OUT OF  
SQUARE. CAUSING  
GAPS, LOOSE GLASS,  
AND INOPERABILITY





KITCHEN K2  
MEETING RAIL IS  
SIGNIFICANTLY OUT  
OF LEVEL DUE TO  
WINDOWS BEING OUT  
OF SQUARE. CANNOT  
BE CLOSED FULLY

KITCHEN K2  
CONDENSATION ON  
GLASS HAS  
DETERIORATED  
WOOD, INCLUDING  
HARDWARE MOUNTS





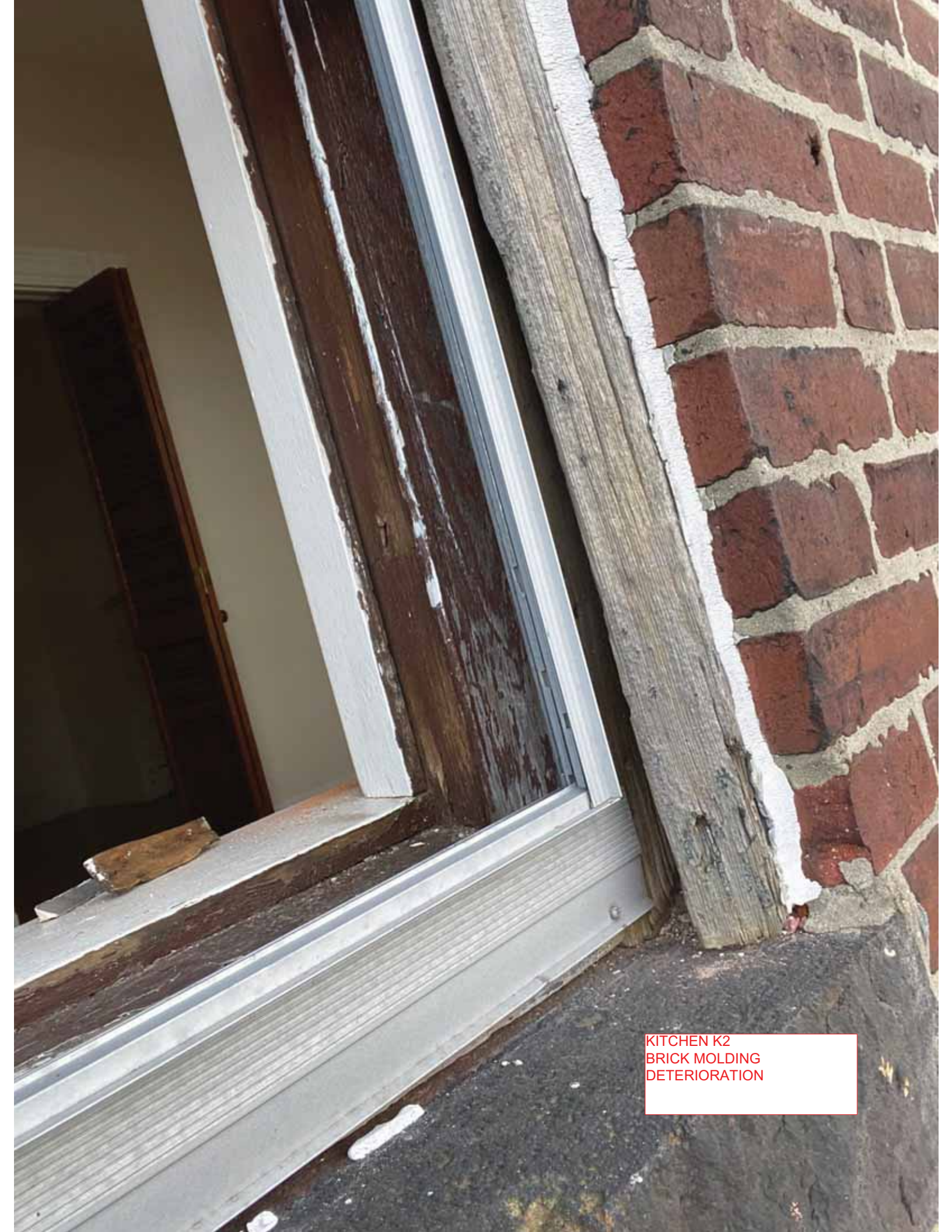
KITCHEN K2  
GLASS IS DETACHED DUE TO  
WINDOW BEING NO LONGER  
SQUARE

A photograph showing the exterior of a window. The window has a white frame and a dark grey screen. The screen is partially open, revealing a blue sky with light clouds. The window is set in a red brick wall. A wooden sill is visible below the window frame. A white rectangular box with red text is overlaid on the right side of the image.

KITCHEN K2  
EXTEIOR VIEW

KITCHEN K2  
EXTEIOR VIEW

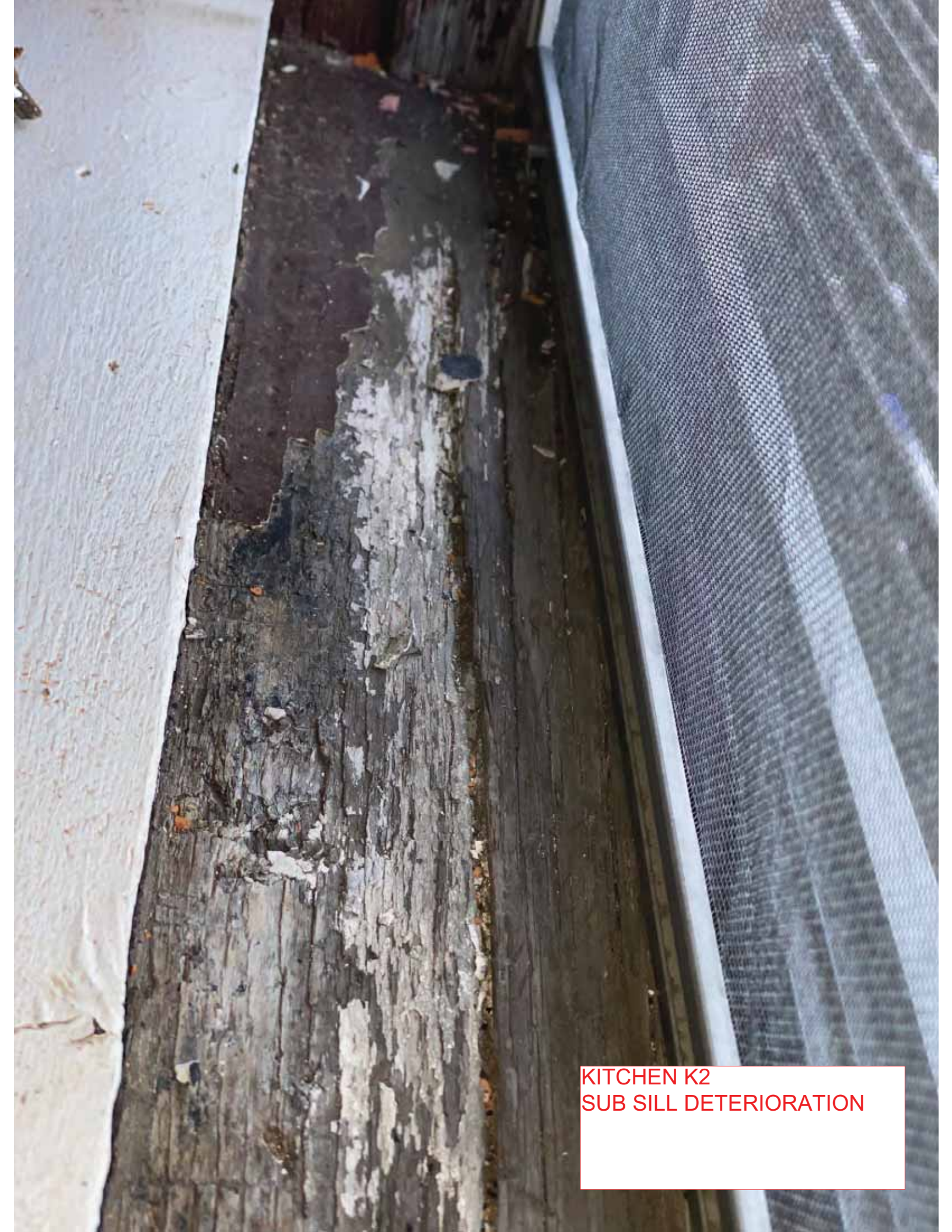




KITCHEN K2  
BRICK MOLDING  
DETERIORATION



KITCHEN K2  
JAMB DETERIORATION

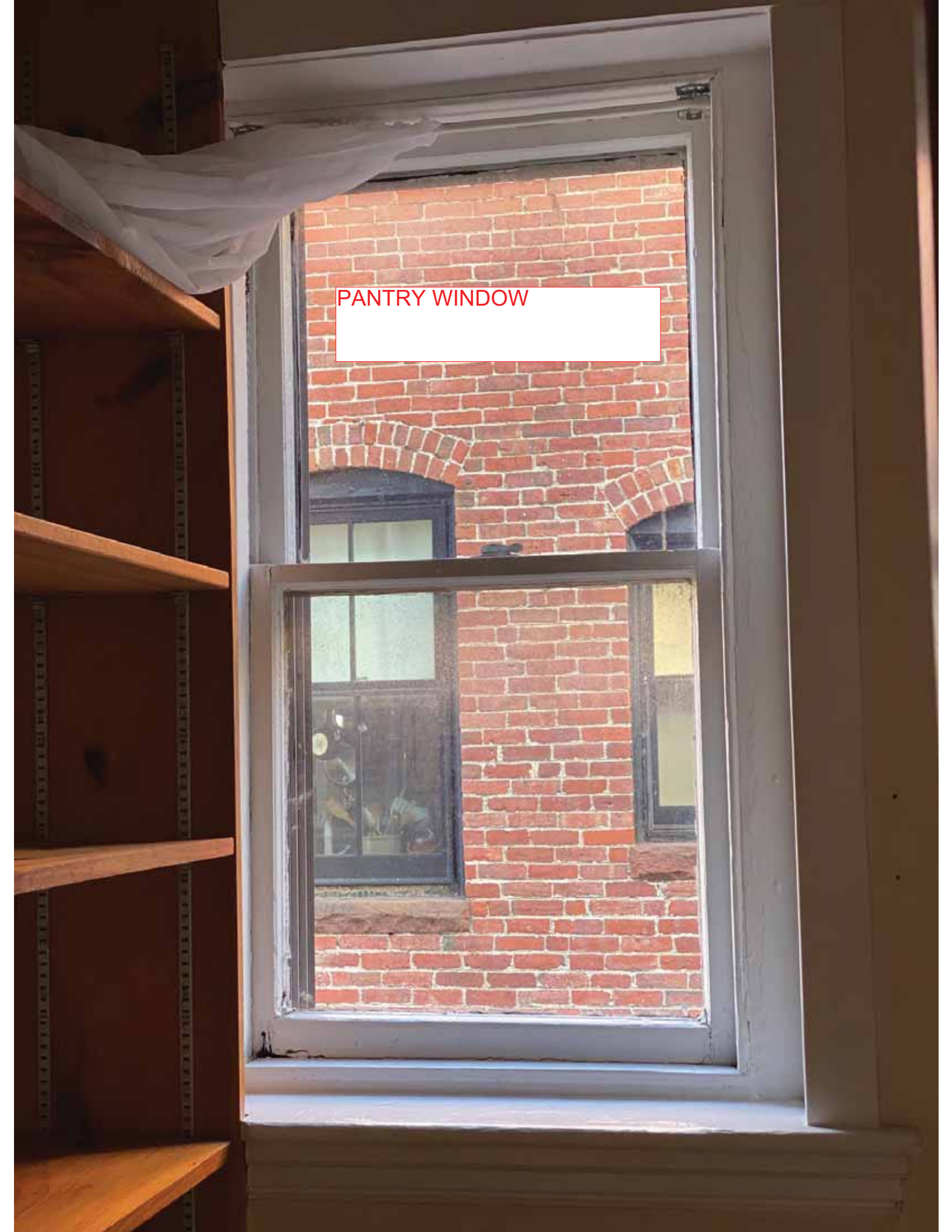


KITCHEN K2  
SUB SILL DETERIORATION

A photograph of a window with four panes, looking out onto a red brick building with arched windows. The window frame is white. The brickwork is a mix of red and brown tones. The arches are made of darker bricks. The window is set in a white wall. A small black object is visible on the right side of the wall above the window. A white text box is overlaid on the bottom right of the window panes.

KITCHEN K3  
COURTYARD WINDOW  
SIMILAR BUT LESS SEVERE

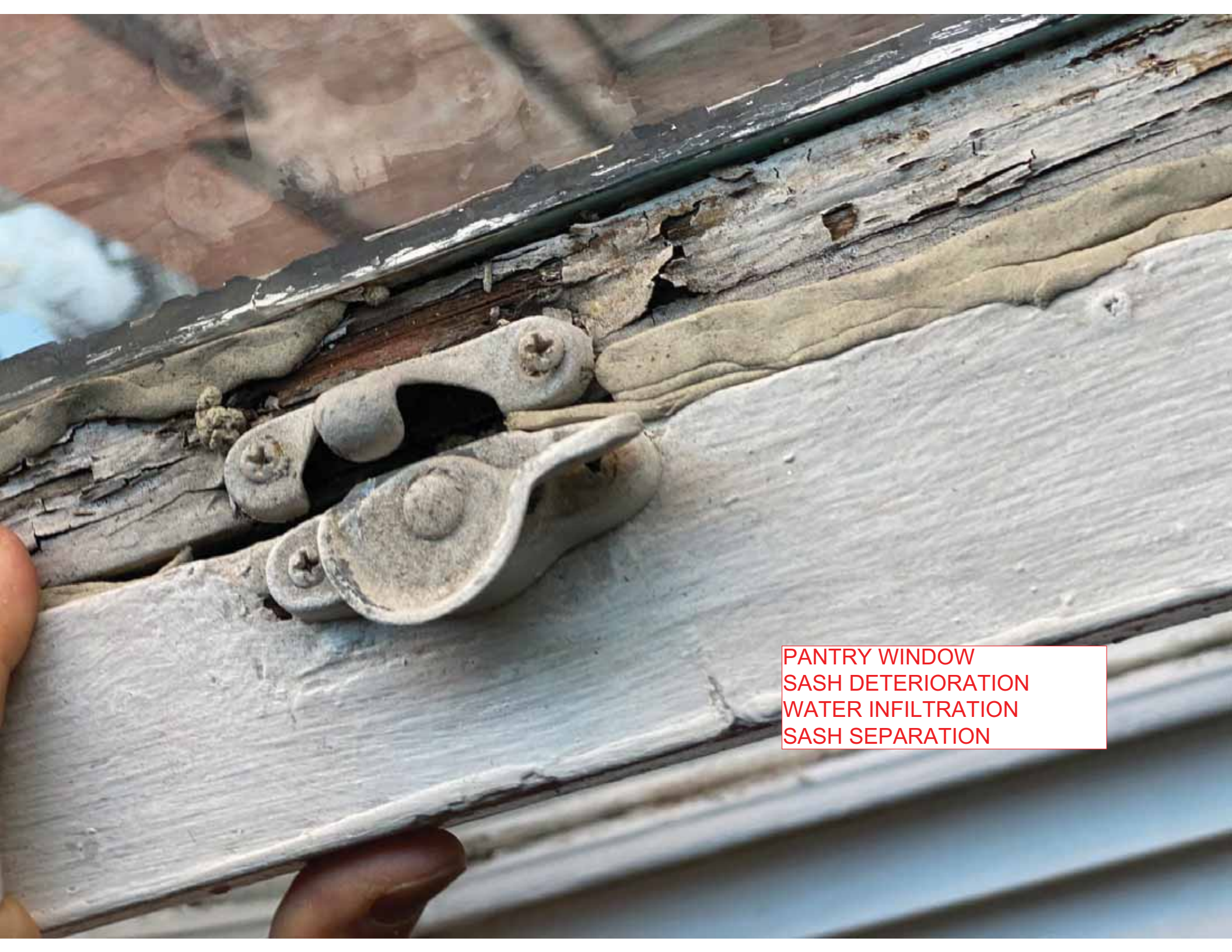
PANTRY WINDOW



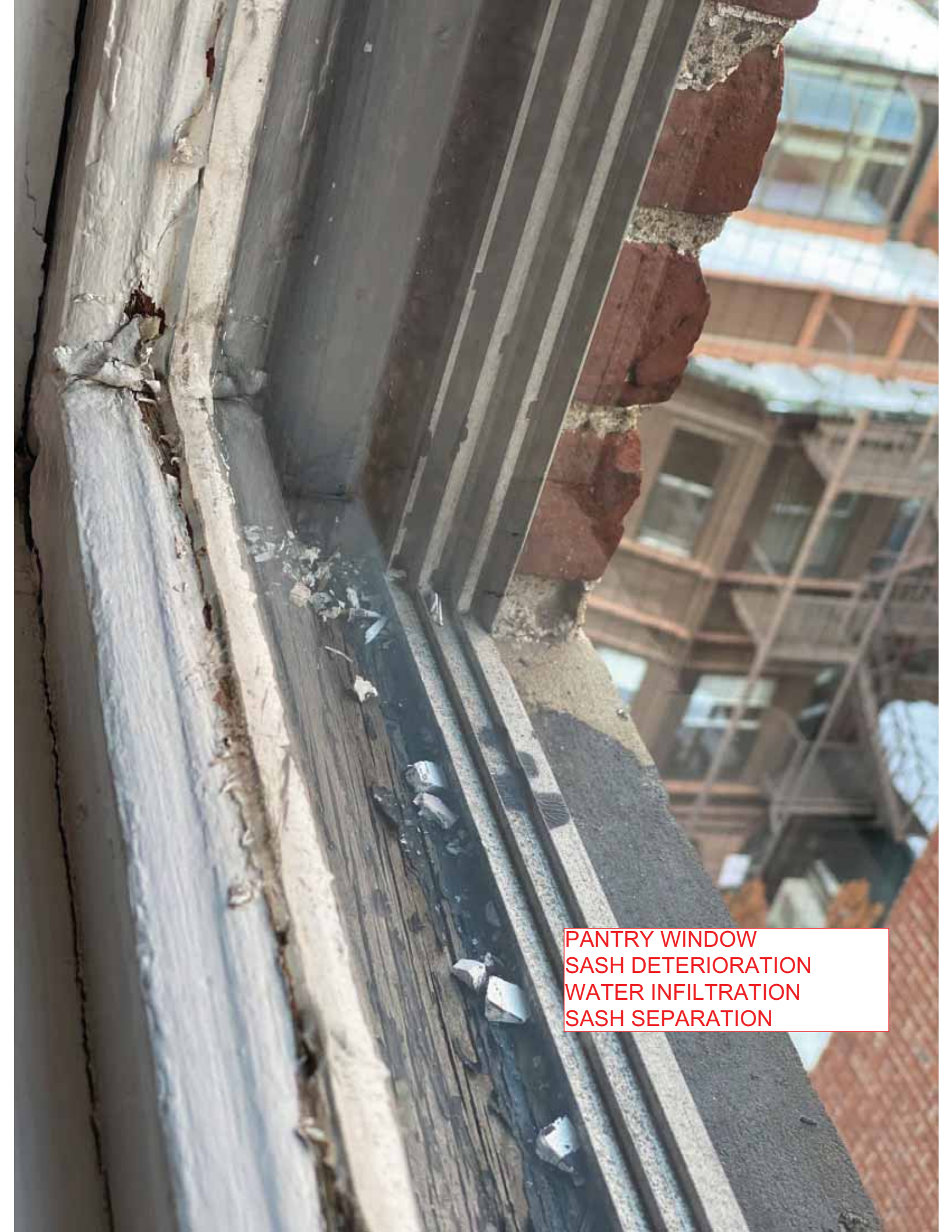


A close-up photograph of a window sash showing significant deterioration. The white paint is peeling and chipped away, revealing the underlying wood, which appears dark and rotted. The window frame is set into a wall, and the sash is partially open, showing a view of a brick wall outside. The text 'PANTRY WINDOW SASH DETERIORATION WATER INFILTRATION' is overlaid in a red-bordered box in the upper right quadrant.

PANTRY WINDOW  
SASH DETERIORATION  
WATER INFILTRATION



PANTRY WINDOW  
SASH DETERIORATION  
WATER INFILTRATION  
SASH SEPARATION



PANTRY WINDOW  
SASH DETERIORATION  
WATER INFILTRATION  
SASH SEPARATION



LIVING ROOM WINDOWS



FRAME HAS SAGGED,  
BINDING

SASHES OUT OF  
SQUARE- DO NOT  
MEET- DO NOT CLOSE  
FULLY

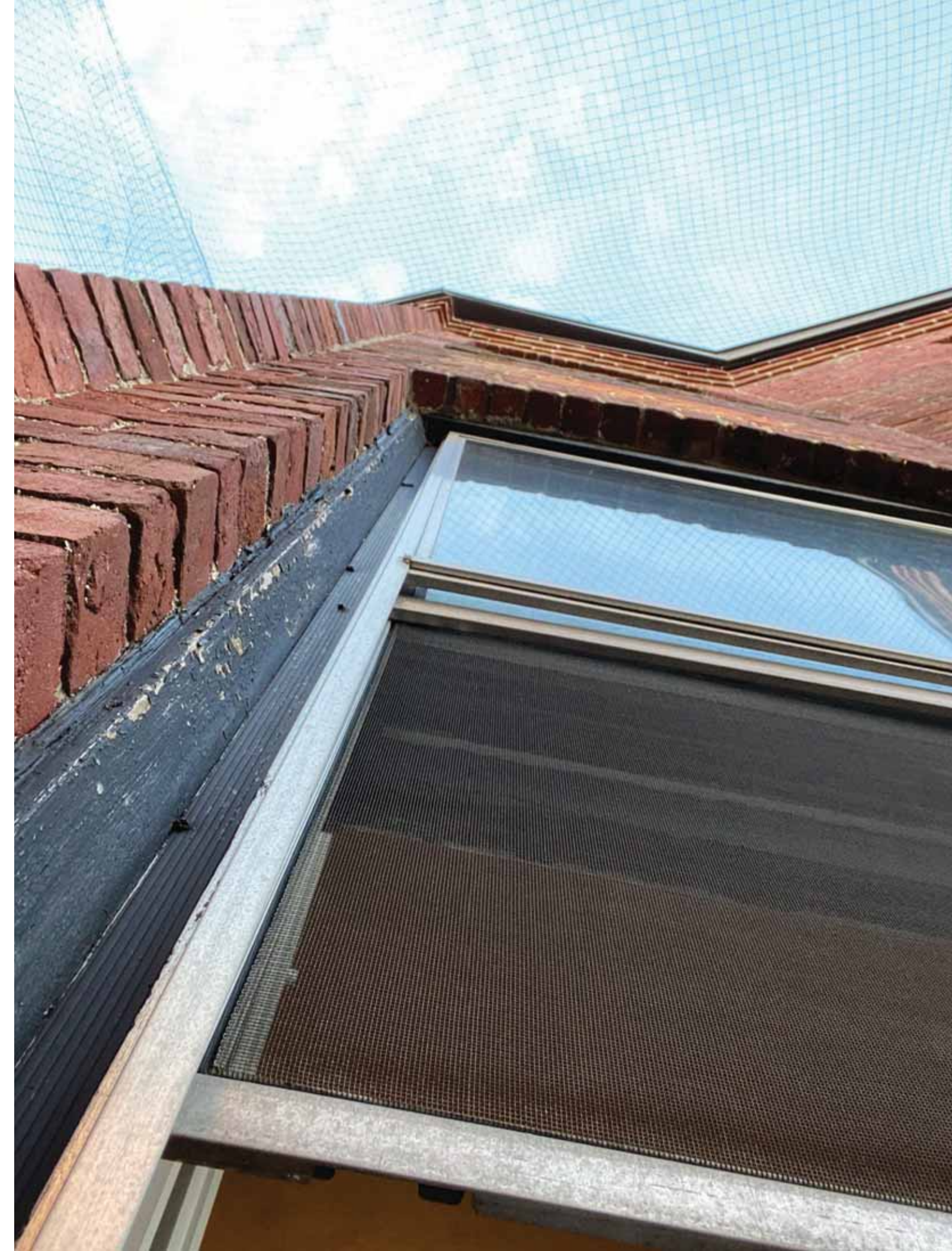
LIVING ROOM  
LARGER WINDOWS HAVE  
STOPPED PERFORMING  
OUT OF SQUARE

SASHES OUT OF SQUARE- DO NOT MEET- DO NOT CLOSE FULLY





FRAME HAS SAGGED,  
BINDING








EXTERIOR WOOD IS SOFT,  
DETERIORATING



L2 LIVING ROOM  
RAIL+STILE DETACHED  
UNIT OUT OF SQUARE  
GLASS LOOSE



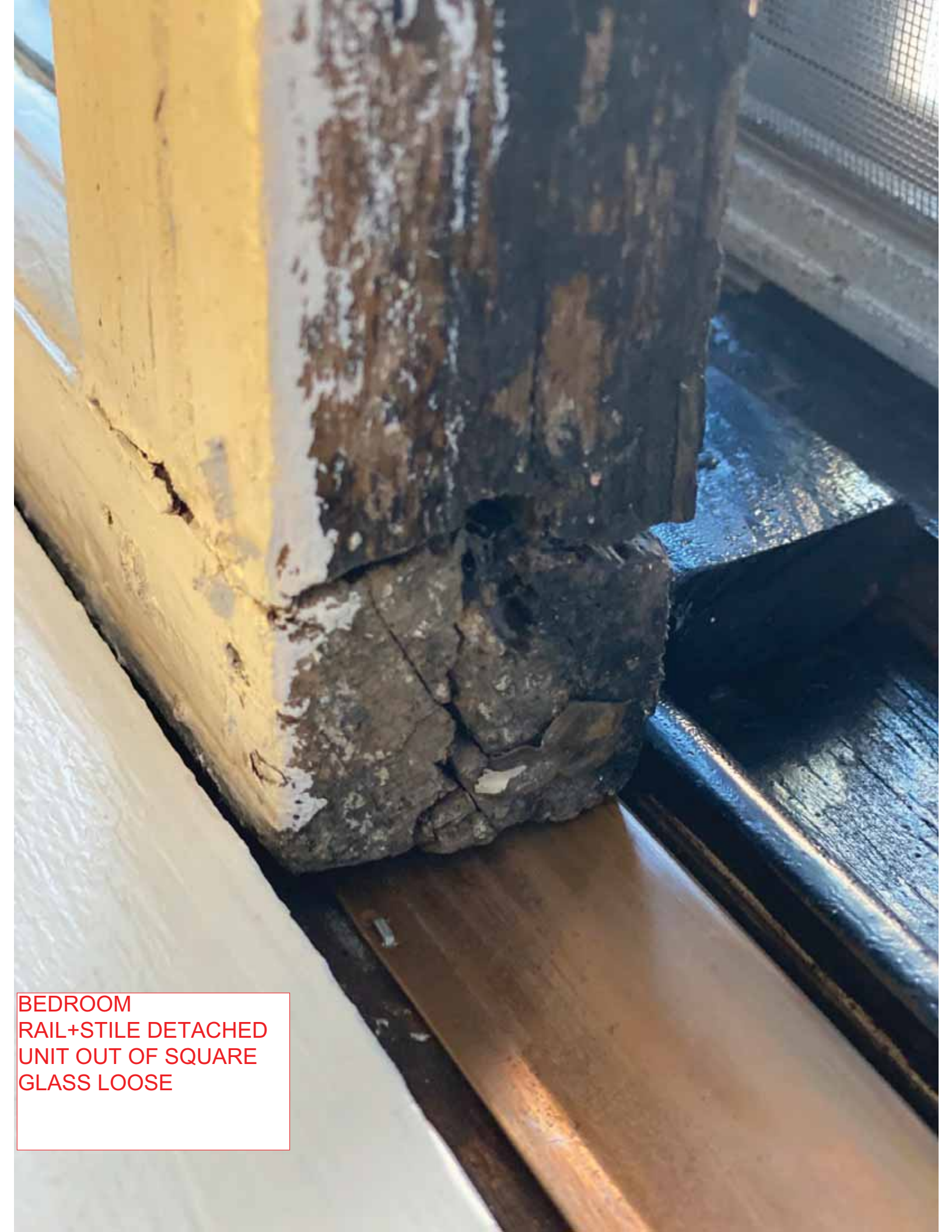
L2 LIVING ROOM  
RAIL+STILE DETACHED  
UNIT OUT OF SQUARE  
GLASS LOOSE

A photograph of a bedroom window. The window consists of two vertical panes, each with a metal grate. The window is framed by a light-colored wooden frame and has yellow shutters on either side. The view outside shows a brick wall and a window with a dark frame. The text "BEDROOM WINDOW" is overlaid in red on a white background at the bottom left of the image.

BEDROOM WINDOW

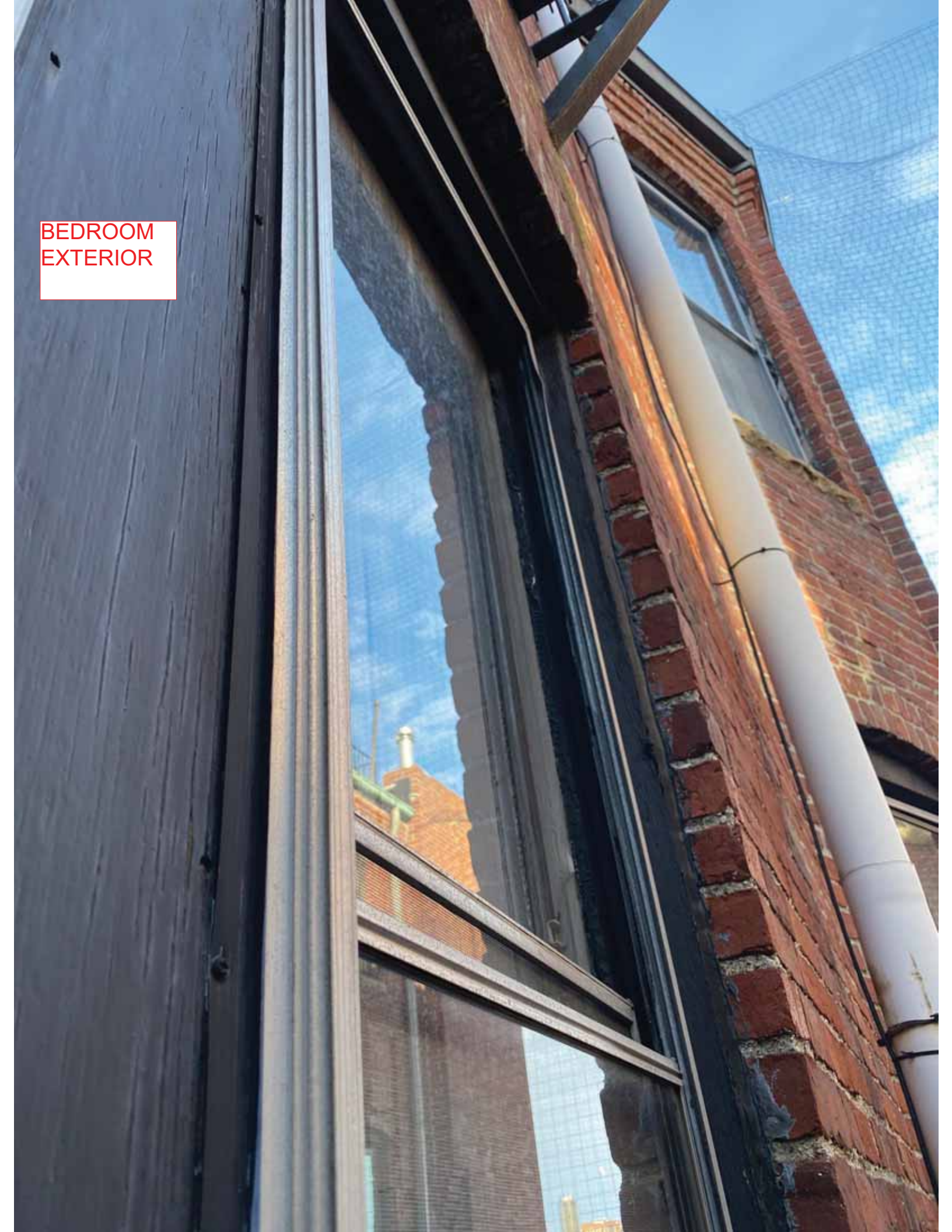
BEDROOM  
RAIL+STILE DETACHED  
UNIT OUT OF SQUARE  
GLASS LOOSE

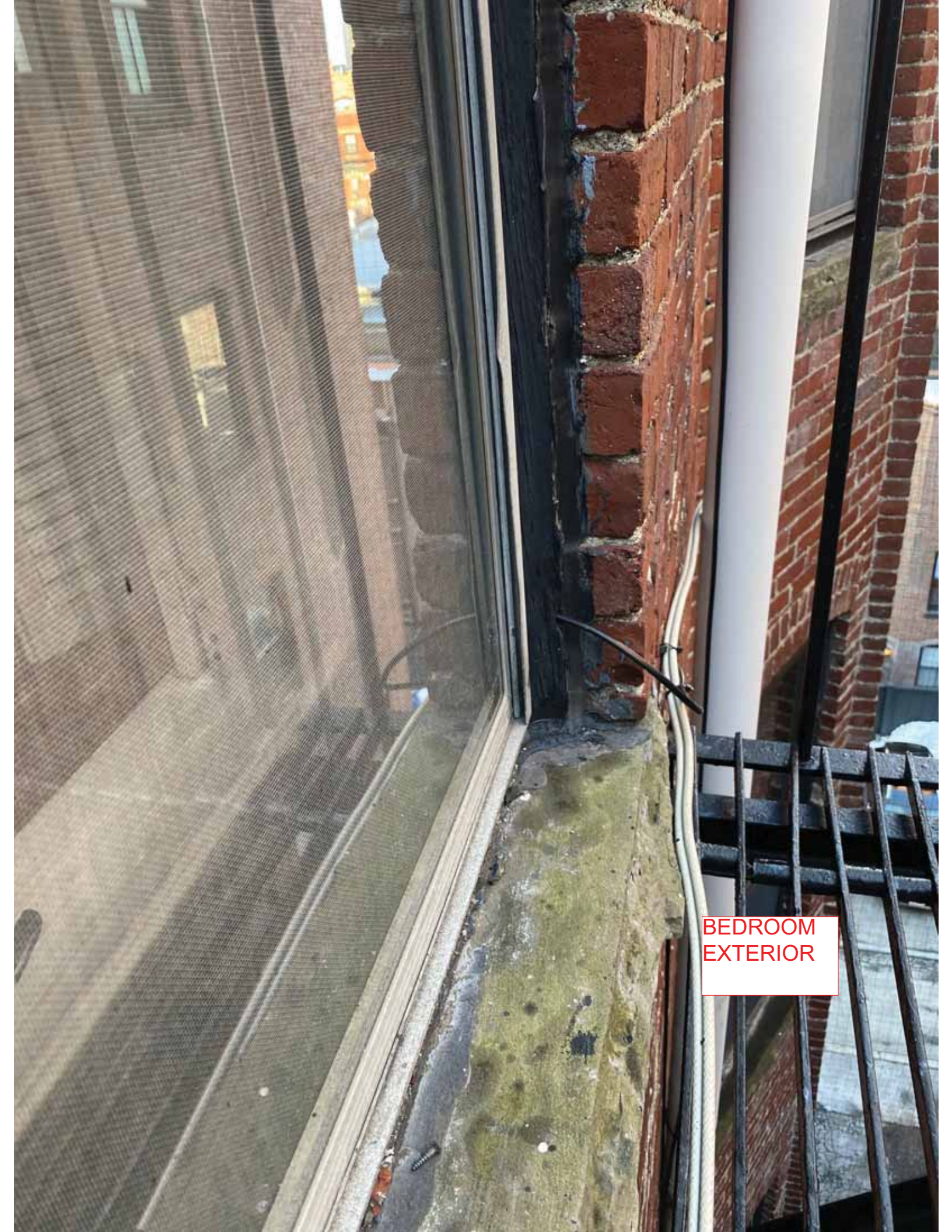




BEDROOM  
RAIL+STILE DETACHED  
UNIT OUT OF SQUARE  
GLASS LOOSE

BEDROOM  
EXTERIOR





BEDROOM  
EXTERIOR





BATHROOM WINDOW



BATHROOM WINDOW  
JAMB SEPARATION  
OUT-OF SQUARE- CANNOT  
CLOSE  
SILL DETERIORATION



BATHROOM WINDOW  
JAMB SEPARATION  
OUT-OF SQUARE- CANNOT  
CLOSE  
SILL DETERIORATION