

MXZ SERIES BRANCH BOX ENCLOSURE

PRODUCT GUIDE

Product Overview

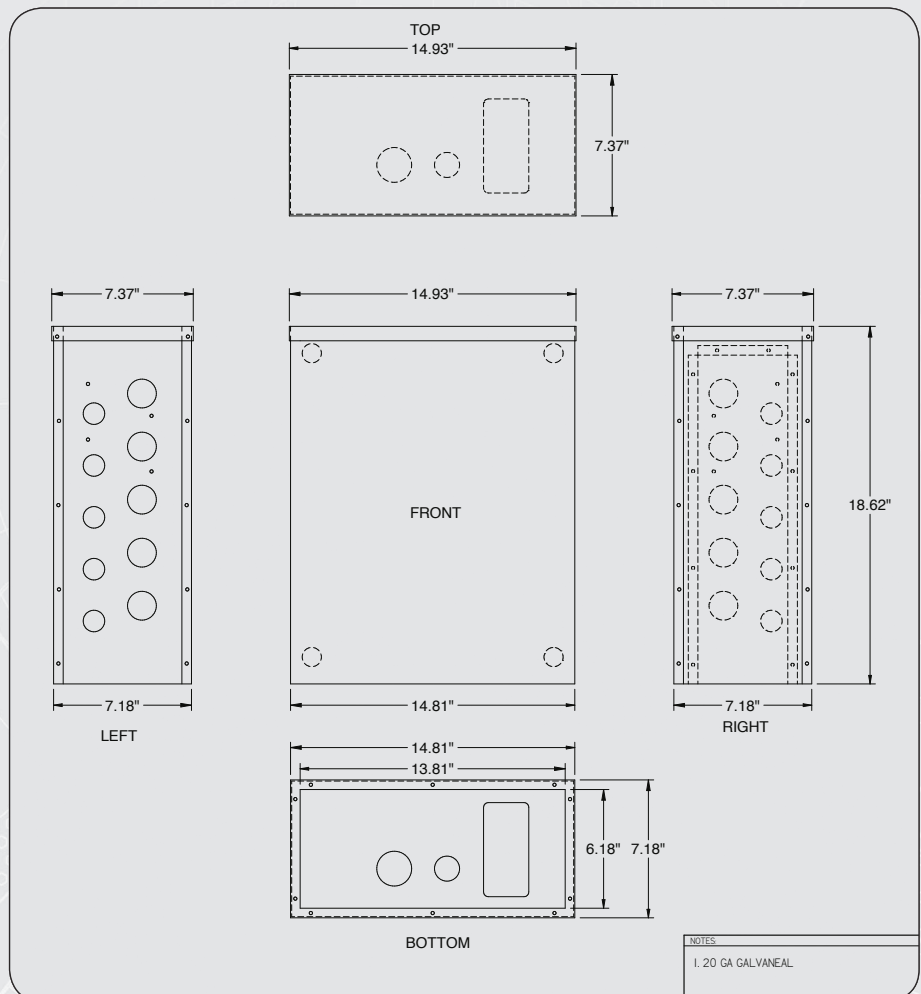
BBE-1 Branch Box Enclosure meets NEMA Type 3R rating for protective enclosures. This design provides mounting location flexibility.

The enclosure ships knocked down, requiring a minimum size shipping container. This allows the enclosure to be built up around the Branch Box for ease of installation.

The BBE-1 adjusts to work with either the three or five port Branch Boxes. It can be mounted vertically or horizontally and like the Branch Box is reversible to pipe from either side.

Features

- ▶ NEMA Type 3R certified
- ▶ 20 ga galvanized steel enclosure
- ▶ Polyester powder coat
- ▶ Color matches MXZ outdoor units



Job Name:
System Reference:

Date:



Outdoor Unit: MXZ-5C42NAHZ

ACCESSORIES

The outdoor unit is delivered with the base pan heater factory installed.

- Airflow Guide (PAC-SH96SG-E)
- Three-port Branch Box (PAC-MKA30BC)
- Five-port Branch Box (PAC-MKA50BC)
- Distribution Pipe for Flare Connection
 - (MSDD-50AR; necessary for installing two branch boxes)
- Distribution Pipe for Brazed Connection
 - (MSDD-50BR; necessary for installing two branch boxes)
- 3/8" x 1/2" Port Adapter (MAC-A454JP)
- 1/2" x 3/8" Port Adapter (MAC-A455JP)
- 1/2" x 5/8" Port Adapter (MAC-A456JP)
- 1/4" x 3/8" Port Adapter (PAC-493PI)
- 3/8" x 5/8" Port Adapter (PAC-SG76RJ)

(For data on specific indoor units, see the MXZ-C Technical and Service Manual.)

Specifications			Model Name
Unit Type			MXZ-5C42NAHZ
Cooling* (Non-ducted / Ducted)	Rated Capacity	Btu/h	42,000 / 42,000
	Capacity Range	Btu/h	15,500 - 42,000
	Rated Total Input	W	3,130 / 3,890
Heating at 47°F* (Non-ducted / Ducted)	Rated Capacity	Btu/h	48,000 / 48,000
	Capacity Range	Btu/h	24,000 - 48,000
	Rated Total Input	W	3,430 / 4,350
Heating at 17°F* (Non-ducted/Ducted)	Rated Capacity	Btu/h	35,800 / 36,600
	Maximum Capacity	Btu/h	48,000 / 48,000
	Rated Total Input	W	3,650 / 4,290
Heating at 5°F*	Maximum Capacity	Btu/h	48,000
Connectable Capacity		Btu/h	12,000-54,600
Energy Star® (ENERGY STAR products are third-party certified by an EPA-recognized Certification Body.)			Yes
Electrical Requirements	Power Supply	Voltage, Phase, Hertz	208 / 230V, 1-Phase, 60 Hz
	Recommended Fuse/Breaker Size	A	50
	MCA	A	42
Voltage	Indoor - Outdoor S1-S2	V	AC 208 / 230
	Indoor - Outdoor S2-S3	V	DC ±24
Compressor			Hermetic
Fan Motor (ECM)		F.L.A.	0.4+0.4
Sound Pressure Level	Cooling	dB(A)	50
	Heating	dB(A)	54
External Dimensions (H x W x D)		In mm	52-11/16 x 41-11/32 x 13+1 1338 x 1050 x 330+25
Net Weight		Lbs / kg	276 / 125
External Finish			Munsell No. 3Y 7.8/11
Refrigerant Pipe Size O.D.	Liquid (High Pressure)	In / mm	3/8 / 9.52
	Gas (Low Pressure)	In / mm	5/8 / 15.88
Max. Refrigerant Line Length		Ft / m	492 (150)
Max. Piping Length between outdoor unit and branch boxes		Ft / m	180 (55)
Max. Piping Length after branch box		Ft / m	82 (25)
Max. Total Piping Length between branch boxes and indoor units		Ft / m	311 (95)
Max. Refrigerant Pipe Height Difference	If IDU is Above ODU	Ft / m	131 (40)
	If IDU is Below ODU	Ft / m	164 (50)
Connection Method			Flared/Flared
Refrigerant			R410A

* Rating Conditions per AHRI Standard:

Cooling | Indoor: 80° F (27° C) DB / 67° F (19° C) WB
Cooling | Outdoor: 95° F (35° C) DB / 75° F (24° C) WB

Heating at 47° F | Indoor: 70° F (21° C) DB
Heating at 47° F | Outdoor: 47° F (8° C) DB / 43° F (6° C) WB

Heating at 17° F | Indoor: 70° F (21° C) DB
Heating at 17° F | Outdoor: 17° F (-8° C) DB / 15° F (-9° C) WB

SPECIFICATIONS: MXZ-5C42NAHZ

OPERATING RANGE:

	Outdoor
Cooling	D.B 23 to 115°F [D.B.-5 to 46°C]*1
Heating	W.B. -13 to 59° F [W.B. -25 to 15° C

*1. D.B. 5 to 115° F [D.B. -15 to 46° C], when an optional Air Outlet Guide is installed.

ENERGY EFFICIENCIES:

Indoor Unit Type	SEER	EER	HSPF	COP @ 47°F	COP @ 17°F
Non-ducted (06+09+09+09+09)	19.0	13.40	11.0	4.10	2.85
Ducted and Non-ducted	17.00	12.11	10.55	3.67	2.68
Ducted (09+09+09+09+09)	15.0	10.80	10.1	3.23	2.50

NOTES:

- Minimum of two Indoor Units must be connected to the MXZ-5C42NAHZ.
- Minimum installed capacity cannot be less than 12,000 Btu/h.
- Total connected capacity must not exceed 130% of outdoor unit capacity.
- System can operate with only one Indoor Unit turned on.
- Information provided at 208/230V.
- For Reference:
 - MXZ-C Technical & Service Manual for detailed specifications and additional information per Indoor Unit Combination.
 - MXZ Series Multi-Zone Indoor/Outdoor Combination Table for allowed unit combinations.

MVZ CONNECTION RULES:

- Up to 2 MVZ's may be connected to this system*.
- When 2 MVZ's are connected, no additional indoor units can be used*.
- When 1 MVZ is connected, additional indoor units can be connected.
- When 1 MVZ is connected, total connected capacity must not exceed 130%.

*No limitation to the number of units connected when the SPTB1 accessory is used, total connected capacity must not exceed 130% (refer to SPTB1 documentation for more information).

NOTES:

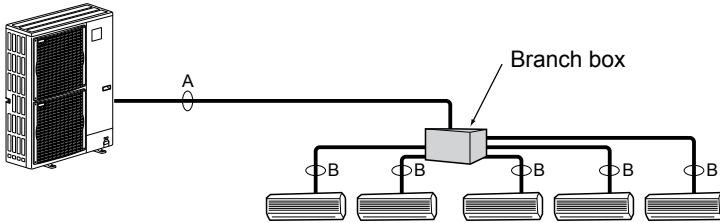
MXZ-5C42NAHZ SYSTEM DESIGN

Outdoor unit		MXZ-5C42NAHZ	
		4.5HP	
	Rated capacity (kBTU/h)	Cooling	42
		Heating	48
		Refrigerant	R410A
Connectable indoor unit	Capacity		Type 06 to Type 36
	Caution: The indoor unit which rated capacity exceeds 36 kBTU/h (Type 36) can NOT be connected.		
	Number of units		2 to 5 units
Total system wide capacity		29 to 130% of outdoor unit capacity (12 to 54.6 kBTU/h)	
Connectable branch box	Number of units	1 or 2 units	

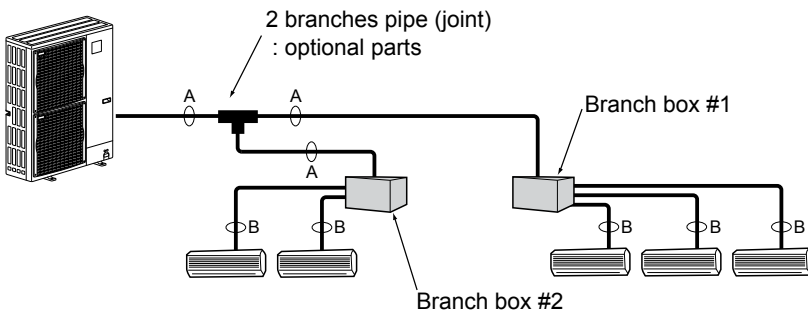
Branch box	PAC-MKA50BC & PAC-MKA51BC	PAC-MKA30BC & PAC-MKA31BC
Number of branches (Indoor unit that can be connected)	5 branches (MAX. 5 units)	3 branches (MAX. 3 units)

Note: A maximum of 2 branch boxes can be connected to 1 outdoor unit.

- If Using One Branch Box
Flare connection employed (No brazing)



- If Using Two Branch Boxes



- Installation procedure (2 branches pipe (joint))
Refer to the installation manuals of MSDD-50AR-E and MSDD-50BR-E.

Branch Box Combinations	
Three-port	Five-port
1	0
0	1
1	1
2	0
0	2 (Up to 8 IDU)

Piping connection size

	A	B
Liquid	$\phi 9.52$ mm (3/8 inch)	The piping connection size differs according to the type and capacity of indoor units. Match the piping connection size of branch box with indoor unit. If the piping connection size of branch box does not match the piping connection size of indoor unit, use optional different-diameter (deformed) joints to the branch box side. (Connect deformed joint directly to the branch box side.)
Gas	$\phi 15.88$ mm (5/8 inch)	

MXZ-5C42NAHZ COOLING AND HEATING CAPACITY AND CHARACTERISTICS

1. Method for obtaining system cooling and heating capacity:

To obtain the system cooling and heating capacity and the electrical characteristics of the outdoor unit, first add up the ratings of all the indoor units connected to the outdoor unit (see table below). For Standard Capacity Diagram, please refer to the MXZ-C Technical & Service Manual.

(1) Capacity of indoor unit

	Model Number for indoor unit	Model 06	Model 09	Model 12	Model 15	Model 18	Model 24	Model 30	Model 36
M series		6.0	9.0	12.0	14.0*1 15.0*2	17.2*3 18.0*4	22.5	—	—
P series	Model Capacity	—	—	12.0	—	18.0	24.0	30.0	35.0
SEZ	[kBTU/h]	—	8.1	11.5	14.1	17.2	—	—	—
SLZ		—	8.4	11.1	15.0	—	—	—	—
MVZ		—	—	12.0	—	18.0	24.0	30.0	36.0

*1 The value is for MSZ-GE15NA.

*2 The value is for MSZ-FH15NA.

*3 The value is for MSZ-GE/FH18NA.

*4 The value is for MSZ-FE18NA or MFZ-KA18NA.

(2) Sample calculation

1 System assembled from indoor and outdoor unit (in this example the total capacity of the indoor units is greater than that of the outdoor unit)

- Outdoor unit MXZ-5C42NAHZ
- Indoor unit MSZ-GE09NA × 2 + MSZ-FH15NA × 2

2 According to the conditions in 1, the total capacity of the indoor unit will be: $9.0 \times 2 + 15.0 \times 2 = 48.0$

3 The following figures are obtained from the 16.8 total capacity of indoor units, referring the standard capacity diagram in "4-3-3. MXZ-5C42NAHZ <cooling>" and "4-3-4. MXZ-5C42NAHZ <heating>".

Capacity (kBTU/h)		Outdoor unit power consumption (kW)		Outdoor unit current (A)/ 230 V	
Cooling	Heating	Cooling	Heating	Cooling	Heating
A 42.0	B				

2. Method for obtaining the heating and cooling capacity of an indoor unit:

(1) The capacity of each indoor unit (kW) = the capacity A (or B) × $\frac{\text{model capacity}}{\text{total model capacity of all indoor units}}$

(2) Sample calculation (using the system described above in 4-1-1. (2)):

During cooling:

- The total model capacity of the indoor unit is:
 $9.0 \times 2 + 15.0 \times 2 = 48.0$ kBTU/h
 Therefore, the capacity of MSZ-GE09NA and MSZ-FH15NA will be calculated as follows by using the formula in 4-1-2. (1):

$$\text{Model 09} = 42.0 \times \frac{9.0}{48.0} = 7.88 \text{ kBTU/h}$$

$$\text{Model 15} = 42.0 \times \frac{15.0}{48.0} = 13.13 \text{ kBTU/h}$$

During heating:

- The total model capacity of indoor unit is:
 $10.9 \times 2 + 18.0 \times 2 = 57.8$ kBTU/h
 Therefore, the capacity of MSZ-GE09NA and MSZ-FH15NA will be calculated as follows by using the formula in 4-1-2. (1):

$$\text{Model 25} = 48.0 \times \frac{10.9}{57.8} = 9.05 \text{ kBTU/h}$$

$$\text{Model 50} = 48.0 \times \frac{18.0}{57.8} = 14.95 \text{ kBTU/h}$$

MXZ-5C42NAHZ OPERATIONAL PERFORMANCE

NON-DUCTED:

# of indoor unit	Total Nominal Capacity (x1000 Btu/h)	Total Indoor Unit Capacity (Btu/h)	Operational Performance for Indoor Unit Combinations (Unit A + Unit B + Unit C + Unit D + Unit E)	Cooling Capacity Range (Btu/h)				
				Heating Capacity Range (Btu/h)				
				Unit A	Unit B	Unit C	Unit D	Unit E
1	6	6,000	6	6,000	-	-	-	-
		7,200		7,200	-	-	-	-
1	9	9,000	9	9,000	-	-	-	-
		10,800		10,800	-	-	-	-
1	12	12,000	12	12,000	-	-	-	-
		14,400		14,400	-	-	-	-
1	15	15,000	15	15,000	-	-	-	-
		18,000		18,000	-	-	-	-
1	18	18,000	18	18,000	-	-	-	-
		21,600		21,600	-	-	-	-
1	24	24,000	24	24,000	-	-	-	-
		28,800		28,800	-	-	-	-
1	30	30,000	30	30,000	-	-	-	-
		36,900		36,900	-	-	-	-
1	36	36,000	36	36,000	-	-	-	-
		45,000		45,000	-	-	-	-
2	12	12,000	6 + 6	6,000	6,000	-	-	-
		14,400		7,200	7,200	-	-	-
2	15	15,000	6 + 9	6,000	9,000	-	-	-
		18,000		7,200	10,800	-	-	-
2	18	18,000	6 + 12	6,000	12,000	-	-	-
		21,600		7,200	14,400	-	-	-
2	21	21,000	6 + 15	6,000	15,000	-	-	-
		25,200		7,200	18,000	-	-	-
2	24	24,000	6 + 18	6,000	18,000	-	-	-
		28,800		7,200	21,600	-	-	-
2	30	30,000	6 + 24	6,000	24,000	-	-	-
		36,900		7,400	29,500	-	-	-
2	36	36,000	6 + 30	6,000	30,000	-	-	-
		45,000		7,300	37,700	-	-	-
2	42	42,000	6 + 36	6,000	36,000	-	-	-
		48,000		6,600	41,400	-	-	-
2	18	18,000	9 + 9	9,000	9,000	-	-	-
		21,600		10,800	10,800	-	-	-
2	21	21,000	9 + 12	9,000	12,000	-	-	-
		25,200		10,800	14,400	-	-	-
2	24	24,000	9 + 15	9,000	15,000	-	-	-
		28,800		10,800	18,000	-	-	-
2	27	27,000	9 + 18	9,000	18,000	-	-	-
		32,800		10,900	21,900	-	-	-
2	33	33,000	9 + 24	9,000	24,000	-	-	-
		40,900		11,200	29,700	-	-	-
2	39	39,000	9 + 30	9,000	30,000	-	-	-
		46,500		10,500	36,000	-	-	-
2	45	42,000	9 + 36	8,400	33,600	-	-	-
		48,000		9,300	38,700	-	-	-
2	24	24,000	12 + 12	12,000	12,000	-	-	-
		28,800		14,400	14,400	-	-	-
2	27	27,000	12 + 15	12,000	15,000	-	-	-
		32,800		14,600	18,200	-	-	-
2	30	30,000	12 + 18	12,000	18,000	-	-	-
		36,900		14,800	22,100	-	-	-
2	36	36,000	12 + 24	12,000	24,000	-	-	-
		45,000		15,000	30,000	-	-	-
2	42	42,000	12 + 30	12,000	30,000	-	-	-
		48,000		13,500	34,500	-	-	-
2	48	42,000	12 + 36	10,500	31,500	-	-	-
		48,000		11,600	36,400	-	-	-
2	30	30,000	15 + 15	15,000	15,000	-	-	-
		36,900		18,500	18,500	-	-	-

Specifications are subject to change without notice.

MXZ-5C42NAHZ OPERATIONAL PERFORMANCE, CONTD.

NON-DUCTED:

# of indoor unit	Total Nominal Capacity (x1000 Btu/h)	Total Indoor Unit Capacity (Btu/h)	Operational Performance for Indoor Unit Combinations (Unit A + Unit B + Unit C + Unit D + Unit E)	Cooling Capacity Range (Btu/h)				
				Heating Capacity Range (Btu/h)				
				Unit A	Unit B	Unit C	Unit D	Unit E
2	33	33,000	15 + 18	15,000	18,000	-	-	-
		40,900		18,600	22,300	-	-	-
2	39	39,000	15 + 24	15,000	24,000	-	-	-
		46,500		17,900	28,600	-	-	-
2	45	42,000	15 + 30	14,000	28,000	-	-	-
		48,000		15,700	32,300	-	-	-
2	51	42,000	15 + 36	12,400	29,600	-	-	-
		48,000		13,700	34,300	-	-	-
2	36	36,000	18 + 18	18,000	18,000	-	-	-
		45,000		22,500	22,500	-	-	-
2	42	42,000	18 + 24	18,000	24,000	-	-	-
		48,000		20,600	27,400	-	-	-
2	48	42,000	18 + 30	15,800	26,300	-	-	-
		48,000		17,700	30,300	-	-	-
2	54	42,000	18 + 36	14,000	28,000	-	-	-
		48,000		15,600	32,400	-	-	-
2	48	42,000	24 + 24	21,000	21,000	-	-	-
		48,000		24,000	24,000	-	-	-
2	54	42,000	24 + 30	18,700	23,300	-	-	-
		48,000		21,000	27,000	-	-	-
3	18	18,000	6 + 6 + 6	6,000	6,000	6,000	-	-
		21,600		7,200	7,200	7,200	-	-
3	21	21,000	6 + 6 + 9	6,000	6,000	9,000	-	-
		25,200		7,200	7,200	10,800	-	-
3	24	24,000	6 + 6 + 12	6,000	6,000	12,000	-	-
		28,800		7,200	7,200	14,400	-	-
3	27	27,000	6 + 6 + 15	6,000	6,000	15,000	-	-
		32,800		7,300	7,300	18,200	-	-
3	30	30,000	6 + 6 + 18	6,000	6,000	18,000	-	-
		36,900		7,400	7,400	22,100	-	-
3	36	36,000	6 + 6 + 24	6,000	6,000	24,000	-	-
		45,000		7,500	7,500	30,000	-	-
3	42	42,000	6 + 6 + 30	6,000	6,000	30,000	-	-
		48,000		6,700	6,700	34,500	-	-
3	48	42,000	6 + 6 + 36	5,300	5,300	31,500	-	-
		48,000		5,800	5,800	36,400	-	-
3	24	24,000	6 + 9 + 9	6,000	9,000	9,000	-	-
		28,800		7,200	10,800	10,800	-	-
3	27	27,000	6 + 9 + 12	6,000	9,000	12,000	-	-
		32,800		7,300	10,900	14,600	-	-
3	30	30,000	6 + 9 + 15	6,000	9,000	15,000	-	-
		36,900		7,400	11,100	18,500	-	-
3	33	33,000	6 + 9 + 18	6,000	9,000	18,000	-	-
		40,900		7,400	11,200	22,300	-	-
3	39	39,000	6 + 9 + 24	6,000	9,000	24,000	-	-
		46,500		7,200	10,700	28,600	-	-
3	45	42,000	6 + 9 + 30	5,600	8,400	28,000	-	-
		48,000		6,300	9,400	32,300	-	-
3	51	42,000	6 + 9 + 36	4,900	7,400	29,600	-	-
		48,000		5,500	8,200	34,300	-	-
3	30	30,000	6 + 12 + 12	6,000	12,000	12,000	-	-
		36,900		7,400	14,800	14,800	-	-
3	33	33,000	6 + 12 + 15	6,000	12,000	15,000	-	-
		40,900		7,400	14,900	18,600	-	-
3	36	36,000	6 + 12 + 18	6,000	12,000	18,000	-	-
		45,000		7,500	15,000	22,500	-	-
3	42	42,000	6 + 12 + 24	6,000	12,000	24,000	-	-
		48,000		6,900	13,700	27,400	-	-
3	48	42,000	6 + 12 + 30	5,300	10,500	26,300	-	-
		48,000		5,900	11,800	30,300	-	-

Specifications are subject to change without notice.

MXZ-5C42NAHZ OPERATIONAL PERFORMANCE, CONTD.

NON-DUCTED:

# of indoor unit	Total Nominal Capacity (x1000 Btu/h)	Total Indoor Unit Capacity (Btu/h)	Operational Performance for Indoor Unit Combinations (Unit A + Unit B + Unit C + Unit D + Unit E)	Cooling Capacity Range (Btu/h)				
				Heating Capacity Range (Btu/h)				
				Unit A	Unit B	Unit C	Unit D	Unit E
3	54	42,000	6 + 12 + 36	4,700	9,300	28,000	-	-
		48,000		5,200	10,400	32,400	-	-
3	36	36,000	6 + 15 + 15	6,000	15,000	15,000	-	-
		45,000		7,500	18,800	18,800	-	-
3	39	39,000	6 + 15 + 18	6,000	15,000	18,000	-	-
		46,500		7,200	17,900	21,500	-	-
3	45	42,000	6 + 15 + 24	5,600	14,000	22,400	-	-
		48,000		6,400	16,000	25,600	-	-
3	51	42,000	6 + 15 + 30	4,900	12,400	24,700	-	-
		48,000		5,600	13,900	28,500	-	-
3	42	42,000	6 + 18 + 18	6,000	18,000	18,000	-	-
		48,000		6,900	20,600	20,600	-	-
3	48	42,000	6 + 18 + 24	5,300	15,800	21,000	-	-
		48,000		6,000	18,000	24,000	-	-
3	54	42,000	6 + 18 + 30	4,700	14,000	23,300	-	-
		48,000		5,300	15,800	27,000	-	-
3	54	42,000	6 + 24 + 24	4,700	18,700	18,700	-	-
		48,000		5,300	21,300	21,300	-	-
3	27	27,000	9 + 9 + 9	9,000	9,000	9,000	-	-
		32,800		10,900	10,900	10,900	-	-
3	30	30,000	9 + 9 + 12	9,000	9,000	12,000	-	-
		36,900		11,100	11,100	14,800	-	-
3	33	33,000	9 + 9 + 15	9,000	9,000	15,000	-	-
		40,900		11,200	11,200	18,600	-	-
3	36	36,000	9 + 9 + 18	9,000	9,000	18,000	-	-
		45,000		11,300	11,300	22,500	-	-
3	42	42,000	9 + 9 + 24	9,000	9,000	24,000	-	-
		48,000		10,300	10,300	27,400	-	-
3	48	42,000	9 + 9 + 30	7,900	7,900	26,300	-	-
		48,000		8,900	8,900	30,300	-	-
3	54	42,000	9 + 9 + 36	7,000	7,000	28,000	-	-
		48,000		7,800	7,800	32,400	-	-
3	33	33,000	9 + 12 + 12	9,000	12,000	12,000	-	-
		40,900		11,200	14,900	14,900	-	-
3	36	36,000	9 + 12 + 15	9,000	12,000	15,000	-	-
		45,000		11,300	15,000	18,800	-	-
3	39	39,000	9 + 12 + 18	9,000	12,000	18,000	-	-
		46,500		10,700	14,300	21,500	-	-
3	45	42,000	9 + 12 + 24	8,400	11,200	22,400	-	-
		48,000		9,600	12,800	25,600	-	-
3	51	42,000	9 + 12 + 30	7,400	9,900	24,700	-	-
		48,000		8,300	11,100	28,500	-	-
3	39	39,000	9 + 15 + 15	9,000	15,000	15,000	-	-
		46,500		10,700	17,900	17,900	-	-
3	42	42,000	9 + 15 + 18	9,000	15,000	18,000	-	-
		48,000		10,300	17,100	20,600	-	-
3	48	42,000	9 + 15 + 24	7,900	13,100	21,000	-	-
		48,000		9,000	15,000	24,000	-	-
3	54	42,000	9 + 15 + 30	7,000	11,700	23,300	-	-
		48,000		7,900	13,200	27,000	-	-
3	45	42,000	9 + 18 + 18	8,400	16,800	16,800	-	-
		48,000		9,600	19,200	19,200	-	-
3	51	42,000	9 + 18 + 24	7,400	14,800	19,800	-	-
		48,000		8,500	16,900	22,600	-	-
3	36	36,000	12 + 12 + 12	12,000	12,000	12,000	-	-
		45,000		15,000	15,000	15,000	-	-
3	39	39,000	12 + 12 + 15	12,000	12,000	15,000	-	-
		46,500		14,300	14,300	17,900	-	-
3	42	42,000	12 + 12 + 18	12,000	12,000	18,000	-	-
		48,000		13,700	13,700	20,600	-	-

MXZ-5C42NAHZ OPERATIONAL PERFORMANCE, CONTD.

NON-DUCTED:

# of indoor unit	Total Nominal Capacity (x1000 Btu/h)	Total Indoor Unit Capacity (Btu/h)	Operational Performance for Indoor Unit Combinations (Unit A + Unit B + Unit C + Unit D + Unit E)	Cooling Capacity Range (Btu/h)				
				Heating Capacity Range (Btu/h)				
				Unit A	Unit B	Unit C	Unit D	Unit E
3	48	42,000	12 + 12 + 24	10,500	10,500	21,000	-	-
		48,000		12,000	12,000	24,000	-	-
3	54	42,000	12 + 12 + 30	9,300	9,300	23,300	-	-
		48,000		10,500	10,500	27,000	-	-
3	42	42,000	12 + 15 + 15	12,000	15,000	15,000	-	-
		48,000		13,700	17,100	17,100	-	-
3	45	42,000	12 + 15 + 18	11,200	14,000	16,800	-	-
		48,000		12,800	16,000	19,200	-	-
3	51	42,000	12 + 15 + 24	9,900	12,400	19,800	-	-
		48,000		11,300	14,100	22,600	-	-
3	48	42,000	12 + 18 + 18	10,500	15,800	15,800	-	-
		48,000		12,000	18,000	18,000	-	-
3	54	42,000	12 + 18 + 24	9,300	14,000	18,700	-	-
		48,000		10,700	16,000	21,300	-	-
3	45	42,000	15 + 15 + 15	14,000	14,000	14,000	-	-
		48,000		16,000	16,000	16,000	-	-
3	48	42,000	15 + 15 + 18	13,100	13,100	15,800	-	-
		48,000		15,000	15,000	18,000	-	-
3	54	42,000	15 + 15 + 24	11,700	11,700	18,700	-	-
		48,000		13,300	13,300	21,300	-	-
3	51	42,000	15 + 18 + 18	12,400	14,800	14,800	-	-
		48,000		14,100	16,900	16,900	-	-
3	54	42,000	18 + 18 + 18	14,000	14,000	14,000	-	-
		48,000		16,000	16,000	16,000	-	-
4	24	24,000	6 + 6 + 6 + 6	6,000	6,000	6,000	6,000	-
		28,800		7,200	7,200	7,200	7,200	-
4	27	27,000	6 + 6 + 6 + 9	6,000	6,000	6,000	9,000	-
		32,800		7,300	7,300	7,300	10,900	-
4	30	30,000	6 + 6 + 6 + 12	6,000	6,000	6,000	12,000	-
		36,900		7,400	7,400	7,400	14,800	-
4	33	33,000	6 + 6 + 6 + 15	6,000	6,000	6,000	15,000	-
		40,900		7,400	7,400	7,400	18,600	-
4	36	36,000	6 + 6 + 6 + 18	6,000	6,000	6,000	18,000	-
		45,000		7,500	7,500	7,500	22,500	-
4	42	42,000	6 + 6 + 6 + 24	6,000	6,000	6,000	24,000	-
		48,000		6,900	6,900	6,900	27,400	-
4	48	42,000	6 + 6 + 6 + 30	5,300	5,300	5,300	26,300	-
		48,000		5,900	5,900	5,900	30,300	-
4	54	42,000	6 + 6 + 6 + 36	4,700	4,700	4,700	28,000	-
		48,000		5,200	5,200	5,200	32,400	-
4	30	30,000	6 + 6 + 9 + 9	6,000	6,000	9,000	9,000	-
		36,900		7,400	7,400	11,100	11,100	-
4	33	33,000	6 + 6 + 9 + 12	6,000	6,000	9,000	12,000	-
		40,900		7,400	7,400	11,200	14,900	-
4	36	36,000	6 + 6 + 9 + 15	6,000	6,000	9,000	15,000	-
		45,000		7,500	7,500	11,300	18,800	-
4	39	39,000	6 + 6 + 9 + 18	6,000	6,000	9,000	18,000	-
		46,500		7,200	7,200	10,700	21,500	-
4	45	42,000	6 + 6 + 9 + 24	5,600	5,600	8,400	22,400	-
		48,000		6,400	6,400	9,600	25,600	-
4	51	42,000	6 + 6 + 9 + 30	4,900	4,900	7,400	24,700	-
		48,000		5,600	5,600	8,300	28,500	-
4	36	36,000	6 + 6 + 12 + 12	6,000	6,000	12,000	12,000	-
		45,000		7,500	7,500	15,000	15,000	-
4	39	39,000	6 + 6 + 12 + 15	6,000	6,000	12,000	15,000	-
		46,500		7,200	7,200	14,300	17,900	-
4	42	42,000	6 + 6 + 12 + 18	6,000	6,000	12,000	18,000	-
		48,000		6,900	6,900	13,700	20,600	-
4	48	42,000	6 + 6 + 12 + 24	5,300	5,300	10,500	21,000	-
		48,000		6,000	6,000	12,000	24,000	-
4	54	42,000	6 + 6 + 12 + 30	4,700	4,700	9,300	23,300	-
		48,000		5,300	5,300	10,500	27,000	-

MXZ-5C42NAHZ OPERATIONAL PERFORMANCE, CONTD.

NON-DUCTED:

# of indoor unit	Total Nominal Capacity (x1000 Btu/h)	Total Indoor Unit Capacity (Btu/h)	Operational Performance for Indoor Unit Combinations (Unit A + Unit B + Unit C + Unit D + Unit E)	Cooling Capacity Range (Btu/h)				
				Heating Capacity Range (Btu/h)				
				Unit A	Unit B	Unit C	Unit D	Unit E
4	42	42,000	6 + 6 + 15 + 15	6,000	6,000	15,000	15,000	-
		48,000		6,900	6,900	17,100	17,100	-
4	45	42,000	6 + 6 + 15 + 18	5,600	5,600	14,000	16,800	-
		48,000		6,400	6,400	16,000	19,200	-
4	51	42,000	6 + 6 + 15 + 24	4,900	4,900	12,400	19,800	-
		48,000		5,600	5,600	14,100	22,600	-
4	48	42,000	6 + 6 + 18 + 18	5,300	5,300	15,800	15,800	-
		48,000		6,000	6,000	18,000	18,000	-
4	54	42,000	6 + 6 + 18 + 24	4,700	4,700	14,000	18,700	-
		48,000		5,300	5,300	16,000	21,300	-
4	33	33,000	6 + 9 + 9 + 9	6,000	9,000	9,000	9,000	-
		40,900		7,400	11,200	11,200	11,200	-
4	36	36,000	6 + 9 + 9 + 12	6,000	9,000	9,000	12,000	-
		45,000		7,500	11,300	11,300	15,000	-
4	39	39,000	6 + 9 + 9 + 15	6,000	9,000	9,000	15,000	-
		46,500		7,200	10,700	10,700	17,900	-
4	42	42,000	6 + 9 + 9 + 18	6,000	9,000	9,000	18,000	-
		48,000		6,900	10,300	10,300	20,600	-
4	48	42,000	6 + 9 + 9 + 24	5,300	7,900	7,900	21,000	-
		48,000		6,000	9,000	9,000	24,000	-
4	54	42,000	6 + 9 + 9 + 30	4,700	7,000	7,000	23,300	-
		48,000		5,300	7,900	7,900	27,000	-
4	39	39,000	6 + 9 + 12 + 12	6,000	9,000	12,000	12,000	-
		46,500		7,200	10,700	14,300	14,300	-
4	42	42,000	6 + 9 + 12 + 15	6,000	9,000	12,000	15,000	-
		48,000		6,900	10,300	13,700	17,100	-
4	45	42,000	6 + 9 + 12 + 18	5,600	8,400	11,200	16,800	-
		48,000		6,400	9,600	12,800	19,200	-
4	51	42,000	6 + 9 + 12 + 24	4,900	7,400	9,900	19,800	-
		48,000		5,600	8,500	11,300	22,600	-
4	45	42,000	6 + 9 + 15 + 15	5,600	8,400	14,000	14,000	-
		48,000		6,400	9,600	16,000	16,000	-
4	48	42,000	6 + 9 + 15 + 18	5,300	7,900	13,100	15,800	-
		48,000		6,000	9,000	15,000	18,000	-
4	54	42,000	6 + 9 + 15 + 24	4,700	7,000	11,700	18,700	-
		48,000		5,300	8,000	13,300	21,300	-
4	51	42,000	6 + 9 + 18 + 18	4,900	7,400	14,800	14,800	-
		48,000		5,600	8,500	16,900	16,900	-
4	42	42,000	6 + 12 + 12 + 12	6,000	12,000	12,000	12,000	-
		48,000		6,900	13,700	13,700	13,700	-
4	45	42,000	6 + 12 + 12 + 15	5,600	11,200	11,200	14,000	-
		48,000		6,400	12,800	12,800	16,000	-
4	48	42,000	6 + 12 + 12 + 18	5,300	10,500	10,500	15,800	-
		48,000		6,000	12,000	12,000	18,000	-
4	54	42,000	6 + 12 + 12 + 24	4,700	9,300	9,300	18,700	-
		48,000		5,300	10,700	10,700	21,300	-
4	51	42,000	6 + 15 + 15 + 15	4,900	12,400	12,400	12,400	-
		48,000		5,600	14,100	14,100	14,100	-
4	54	42,000	6 + 15 + 15 + 18	4,700	11,700	11,700	14,000	-
		48,000		5,300	13,300	13,300	16,000	-
4	36	36,000	9 + 9 + 9 + 9	9,000	9,000	9,000	9,000	-
		45,000		11,300	11,300	11,300	11,300	-
4	39	39,000	9 + 9 + 9 + 12	9,000	9,000	9,000	12,000	-
		46,500		10,700	10,700	10,700	14,300	-
4	42	42,000	9 + 9 + 9 + 15	9,000	9,000	9,000	15,000	-
		48,000		10,300	10,300	10,300	17,100	-
4	45	42,000	9 + 9 + 9 + 18	8,400	8,400	8,400	16,800	-
		48,000		9,600	9,600	9,600	19,200	-
4	51	42,000	9 + 9 + 9 + 24	7,400	7,400	7,400	19,800	-
		48,000		8,500	8,500	8,500	22,600	-
4	42	42,000	9 + 9 + 12 + 12	9,000	9,000	12,000	12,000	-
		48,000		10,300	10,300	13,700	13,700	-

MXZ-5C42NAHZ OPERATIONAL PERFORMANCE, CONTD.

NON-DUCTED:

# of indoor unit	Total Nominal Capacity (x1000 Btu/h)	Total Indoor Unit Capacity (Btu/h)	Operational Performance for Indoor Unit Combinations (Unit A + Unit B + Unit C + Unit D + Unit E)	Cooling Capacity Range (Btu/h)				
				Heating Capacity Range (Btu/h)				
				Unit A	Unit B	Unit C	Unit D	Unit E
4	45	42,000	9 + 9 + 12 + 15	8,400	8,400	11,200	14,000	-
		48,000		9,600	9,600	12,800	16,000	-
4	48	42,000	9 + 9 + 12 + 18	7,900	7,900	10,500	15,800	-
		48,000		9,000	9,000	12,000	18,000	-
4	54	42,000	9 + 9 + 12 + 24	7,000	7,000	9,300	18,700	-
		48,000		8,000	8,000	10,700	21,300	-
4	45	42,000	9 + 12 + 12 + 12	8,400	11,200	11,200	11,200	-
		48,000		9,600	12,800	12,800	12,800	-
4	48	42,000	9 + 12 + 12 + 15	7,900	10,500	10,500	13,100	-
		48,000		9,000	12,000	12,000	15,000	-
4	51	42,000	9 + 12 + 12 + 18	7,400	9,900	9,900	14,800	-
		48,000		8,500	11,300	11,300	16,900	-
4	48	42,000	12 + 12 + 12 + 12	10,500	10,500	10,500	10,500	-
		48,000		12,000	12,000	12,000	12,000	-
4	51	42,000	12 + 12 + 12 + 15	9,900	9,900	9,900	12,400	-
		48,000		11,300	11,300	11,300	14,100	-
4	54	42,000	12 + 12 + 15 + 15	9,300	9,300	11,700	11,700	-
		48,000		10,700	10,700	13,300	13,300	-
5	30	30,000	6 + 6 + 6 + 6 + 6	6,000	6,000	6,000	6,000	6,000
		36,900		7,400	7,400	7,400	7,400	7,400
5	33	33,000	6 + 6 + 6 + 6 + 9	6,000	6,000	6,000	6,000	9,000
		40,900		7,400	7,400	7,400	7,400	11,200
5	36	36,000	6 + 6 + 6 + 6 + 12	6,000	6,000	6,000	6,000	12,000
		45,000		7,500	7,500	7,500	7,500	15,000
5	39	39,000	6 + 6 + 6 + 6 + 15	6,000	6,000	6,000	6,000	15,000
		46,500		7,200	7,200	7,200	7,200	17,900
5	42	42,000	6 + 6 + 6 + 6 + 18	6,000	6,000	6,000	6,000	18,000
		48,000		6,900	6,900	6,900	6,900	20,600
5	48	42,000	6 + 6 + 6 + 6 + 24	5,300	5,300	5,300	5,300	21,000
		48,000		6,000	6,000	6,000	6,000	24,000
5	54	42,000	6 + 6 + 6 + 6 + 30	4,700	4,700	4,700	4,700	23,300
		48,000		5,300	5,300	5,300	5,300	27,000
5	36	36,000	6 + 6 + 6 + 9 + 9	6,000	6,000	6,000	9,000	9,000
		45,000		7,500	7,500	7,500	11,300	11,300
5	39	39,000	6 + 6 + 6 + 9 + 12	6,000	6,000	6,000	9,000	12,000
		46,500		7,200	7,200	7,200	10,700	14,300
5	42	42,000	6 + 6 + 6 + 9 + 15	6,000	6,000	6,000	9,000	15,000
		48,000		6,900	6,900	6,900	10,300	17,100
5	45	42,000	6 + 6 + 6 + 9 + 18	5,600	5,600	5,600	8,400	16,800
		48,000		6,400	6,400	6,400	9,600	19,200
5	51	42,000	6 + 6 + 6 + 9 + 24	4,900	4,900	4,900	7,400	19,800
		48,000		5,600	5,600	5,600	8,500	22,600
5	42	42,000	6 + 6 + 6 + 12 + 12	6,000	6,000	6,000	12,000	12,000
		48,000		6,900	6,900	6,900	13,700	13,700
5	45	42,000	6 + 6 + 6 + 12 + 15	5,600	5,600	5,600	11,200	14,000
		48,000		6,400	6,400	6,400	12,800	16,000
5	48	42,000	6 + 6 + 6 + 12 + 18	5,300	5,300	5,300	10,500	15,800
		48,000		6,000	6,000	6,000	12,000	18,000
5	54	42,000	6 + 6 + 6 + 12 + 24	4,700	4,700	4,700	9,300	18,700
		48,000		5,300	5,300	5,300	10,700	21,300
5	48	42,000	6 + 6 + 6 + 15 + 15	5,300	5,300	5,300	13,100	13,100
		48,000		6,000	6,000	6,000	15,000	15,000
5	51	42,000	6 + 6 + 6 + 15 + 18	4,900	4,900	4,900	12,400	14,800
		48,000		5,600	5,600	5,600	14,100	16,900
5	54	42,000	6 + 6 + 6 + 18 + 18	4,700	4,700	4,700	14,000	14,000
		48,000		5,300	5,300	5,300	16,000	16,000
5	39	39,000	6 + 6 + 9 + 9 + 9	6,000	6,000	9,000	9,000	9,000
		46,500		7,200	7,200	10,700	10,700	10,700
5	42	42,000	6 + 6 + 9 + 9 + 12	6,000	6,000	9,000	9,000	12,000
		48,000		6,900	6,900	10,300	10,300	13,700
5	45	42,000	6 + 6 + 9 + 9 + 15	5,600	5,600	8,400	8,400	14,000
		48,000		6,400	6,400	9,600	9,600	16,000

MXZ-5C42NAHZ OPERATIONAL PERFORMANCE, CONTD.

NON-DUCTED:

# of indoor unit	Total Nominal Capacity (x1000 Btu/h)	Total Indoor Unit Capacity (Btu/h)	Operational Performance for Indoor Unit Combinations (Unit A + Unit B + Unit C + Unit D + Unit E)	Cooling Capacity Range (Btu/h)				
				Heating Capacity Range (Btu/h)				
				Unit A	Unit B	Unit C	Unit D	Unit E
5	48	42,000	6 + 6 + 9 + 9 + 18	5,300	5,300	7,900	7,900	15,800
		48,000		6,000	6,000	9,000	9,000	18,000
5	54	42,000	6 + 6 + 9 + 9 + 24	4,700	4,700	7,000	7,000	18,700
		48,000		5,300	5,300	8,000	8,000	21,300
5	45	42,000	6 + 6 + 9 + 12 + 12	5,600	5,600	8,400	11,200	11,200
		48,000		6,400	6,400	9,600	12,800	12,800
5	48	42,000	6 + 6 + 9 + 12 + 15	5,300	5,300	7,900	10,500	13,100
		48,000		6,000	6,000	9,000	12,000	15,000
5	51	42,000	6 + 6 + 9 + 12 + 18	4,900	4,900	7,400	9,900	14,800
		48,000		5,600	5,600	8,500	11,300	16,900
5	51	42,000	6 + 6 + 9 + 15 + 15	4,900	4,900	7,400	12,400	12,400
		48,000		5,600	5,600	8,500	14,100	14,100
5	54	42,000	6 + 6 + 9 + 15 + 18	4,700	4,700	7,000	11,700	14,000
		48,000		5,300	5,300	8,000	13,300	16,000
5	48	42,000	6 + 6 + 12 + 12 + 12	5,300	5,300	10,500	10,500	10,500
		48,000		6,000	6,000	12,000	12,000	12,000
5	51	42,000	6 + 6 + 12 + 12 + 15	4,900	4,900	9,900	9,900	12,400
		48,000		5,600	5,600	11,300	11,300	14,100
5	54	42,000	6 + 6 + 12 + 12 + 18	4,700	4,700	9,300	9,300	14,000
		48,000		5,300	5,300	10,700	10,700	16,000
5	54	42,000	6 + 6 + 12 + 15 + 15	4,700	4,700	9,300	11,700	11,700
		48,000		5,300	5,300	10,700	13,300	13,300
5	42	42,000	6 + 9 + 9 + 9 + 9	6,000	9,000	9,000	9,000	9,000
		48,000		6,900	10,300	10,300	10,300	10,300
5	45	42,000	6 + 9 + 9 + 9 + 12	5,600	8,400	8,400	8,400	11,200
		48,000		6,400	9,600	9,600	9,600	12,800
5	48	42,000	6 + 9 + 9 + 9 + 15	5,300	7,900	7,900	7,900	13,100
		48,000		6,000	9,000	9,000	9,000	15,000
5	51	42,000	6 + 9 + 9 + 9 + 18	4,900	7,400	7,400	7,400	14,800
		48,000		5,600	8,500	8,500	8,500	16,900
5	48	42,000	6 + 9 + 9 + 12 + 12	5,300	7,900	7,900	10,500	10,500
		48,000		6,000	9,000	9,000	12,000	12,000
5	51	42,000	6 + 9 + 9 + 12 + 15	4,900	7,400	7,400	9,900	12,400
		48,000		5,600	8,500	8,500	11,300	14,100
5	54	42,000	6 + 9 + 9 + 12 + 18	4,700	7,000	7,000	9,300	14,000
		48,000		5,300	8,000	8,000	10,700	16,000
5	54	42,000	6 + 9 + 9 + 15 + 15	4,700	7,000	7,000	11,700	11,700
		48,000		5,300	8,000	8,000	13,300	13,300
5	51	42,000	6 + 9 + 12 + 12 + 12	4,900	7,400	9,900	9,900	9,900
		48,000		5,600	8,500	11,300	11,300	11,300
5	54	42,000	6 + 9 + 12 + 12 + 15	4,700	7,000	9,300	9,300	11,700
		48,000		5,300	8,000	10,700	10,700	13,300
5	54	42,000	6 + 12 + 12 + 12 + 12	4,700	9,300	9,300	9,300	9,300
		48,000		5,300	10,700	10,700	10,700	10,700
5	45	42,000	9 + 9 + 9 + 9 + 9	8,400	8,400	8,400	8,400	8,400
		48,000		9,600	9,600	9,600	9,600	9,600
5	48	42,000	9 + 9 + 9 + 9 + 12	7,900	7,900	7,900	7,900	10,500
		48,000		9,000	9,000	9,000	9,000	12,000
5	51	42,000	9 + 9 + 9 + 9 + 15	7,400	7,400	7,400	7,400	12,400
		48,000		8,500	8,500	8,500	8,500	14,100
5	54	42,000	9 + 9 + 9 + 9 + 18	7,000	7,000	7,000	7,000	14,000
		48,000		8,000	8,000	8,000	8,000	16,000
5	51	42,000	9 + 9 + 9 + 12 + 12	7,400	7,400	7,400	9,900	9,900
		48,000		8,500	8,500	8,500	11,300	11,300
5	54	42,000	9 + 9 + 9 + 12 + 15	7,000	7,000	7,000	9,300	11,700
		48,000		8,000	8,000	8,000	10,700	13,300
5	54	42,000	9 + 9 + 12 + 12 + 12	7,000	7,000	9,300	9,300	9,300
		48,000		8,000	8,000	10,700	10,700	10,700

DIMENSIONS: PAC-MKA30BC AND PAC-MKA50BC BRANCH BOXES

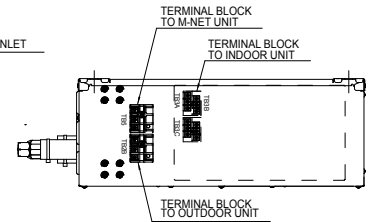
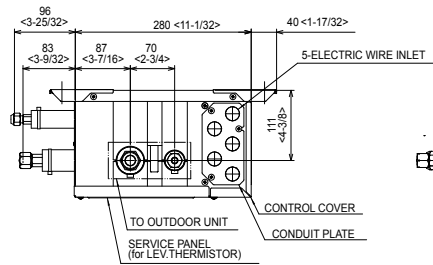
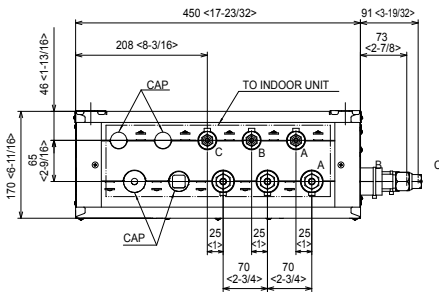
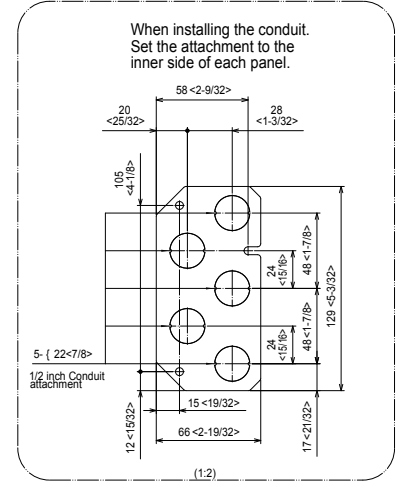
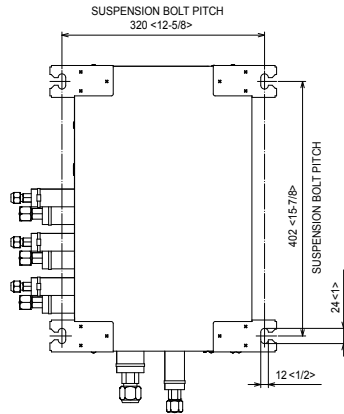
Unit: mm <in>

PAC-MKA30BC & PAC-MKA31BC

SUSPENSION BOLT : W3/8(M10)

REFRIGERANT PIPE FLARED CONNECTION

	A	B	C		TO OUTDOOR UNIT
LIQUID PIPE	1/4F	1/4F	1/4F		3/8F
GAS PIPE	3/8F	3/8F	3/8F		5/8F



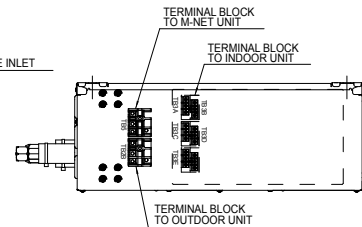
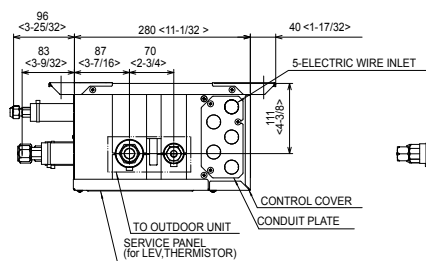
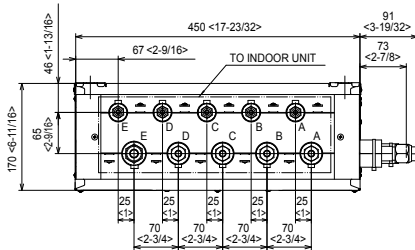
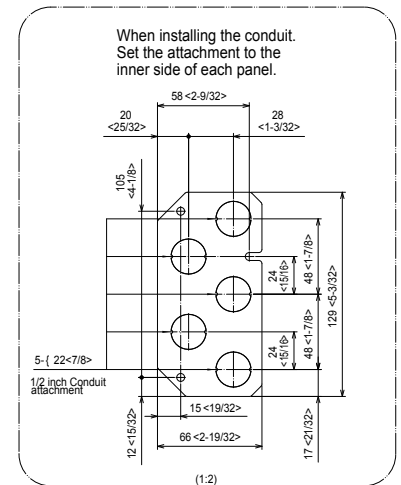
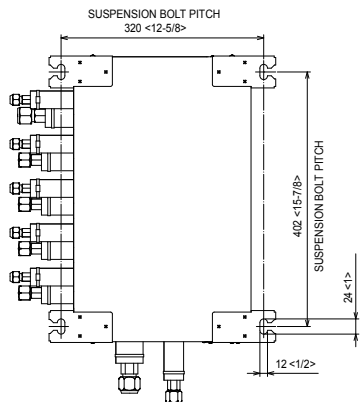
Unit: mm <in>

PAC-MKA50BC & PAC-MKA51BC

SUSPENSION BOLT : W3/8(M10)

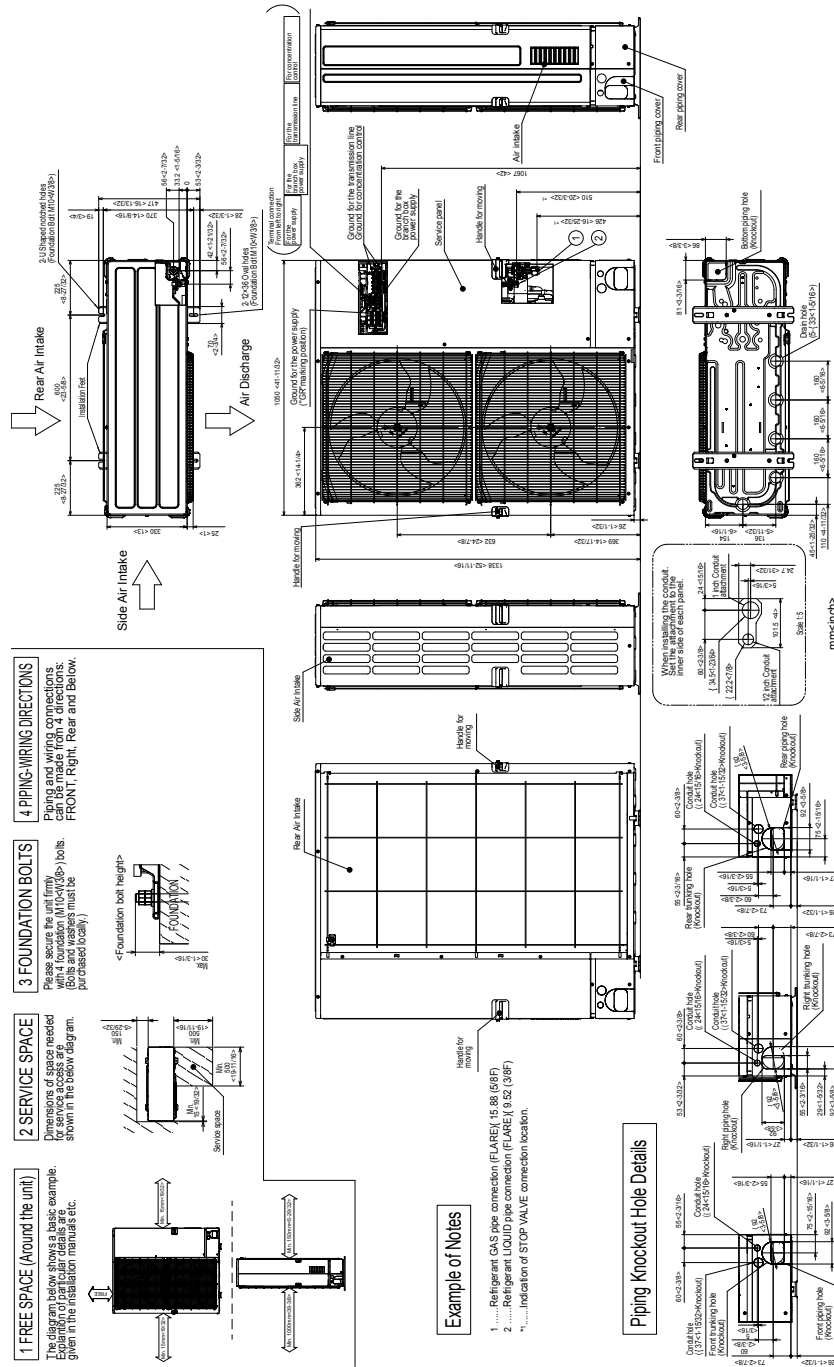
REFRIGERANT PIPE FLARED CONNECTION

	A	B	C	D	E	To Outdoor Unit
LIQUID PIPE	1/4F	1/4F	1/4F	1/4F	1/4F	3/8F
GAS PIPE	3/8F	3/8F	3/8F	3/8F	1/2F	5/8F



DIMENSIONS: MXZ-5C42NAHZ

Unit: mm <in>



COOLING & HEATING

1340 Satellite Boulevard, Suwanee, GA 30024
Toll Free: 800-433-4822 www.mehvac.com



