

# 126 MARLBOROUGH STREET BOSTON, MASSACHUSETTS



COMPOSITE OF SEVERAL PHOTOS TAKEN MARCH 2013, FROM BACKBAYHOUSES.ORG

BACK BAY ARCHITECTURAL COMMISSION  
MARCH 11, 2020

## ARCHITECTS

**CBT**  
110 Canal Street  
Boston, MA 02114  
p. 617 262 4354, f. 617 267 9667



2/19/2020 9:51:17 AM



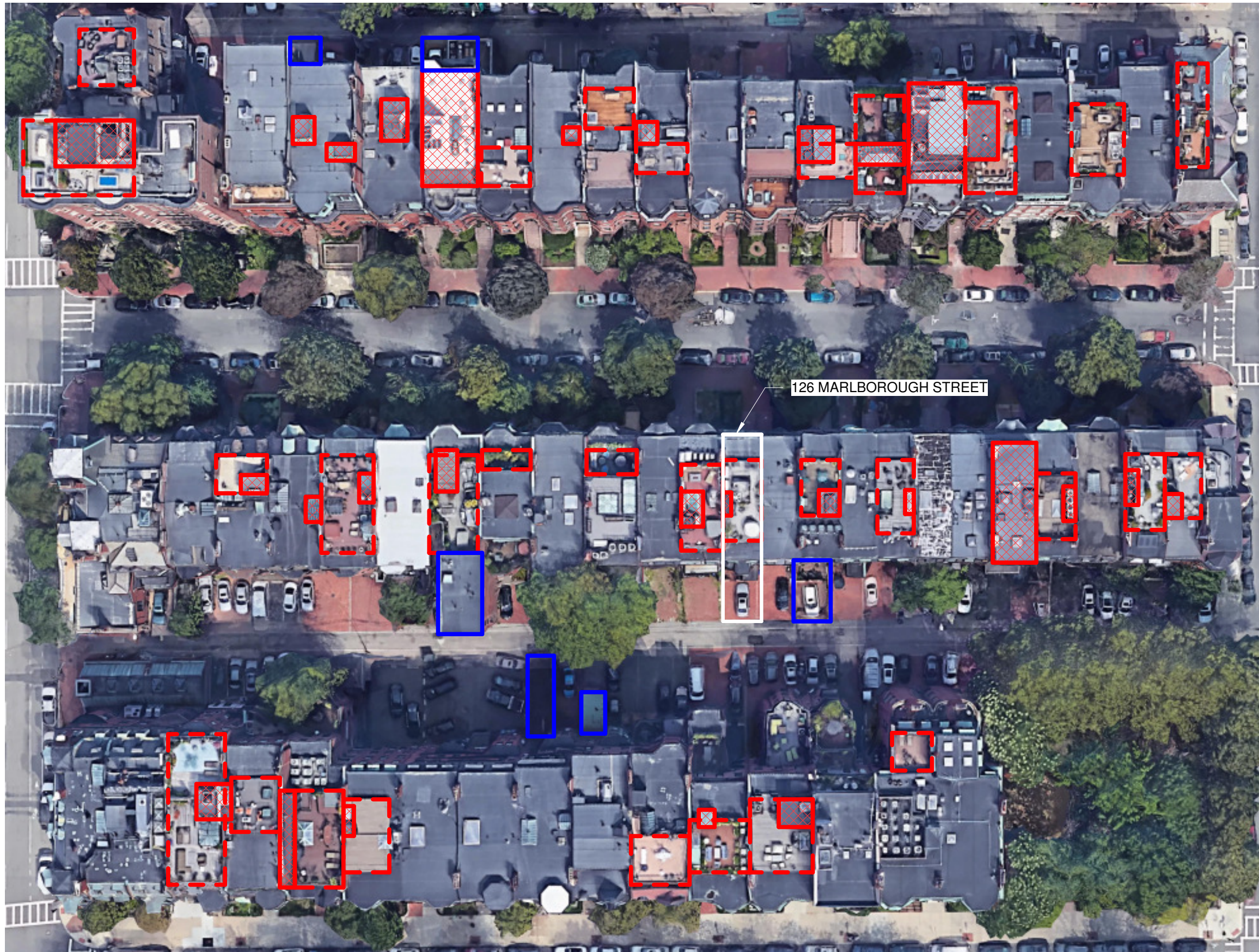
FRONT



BACK

**EXISTING EXTERIOR PHOTOS**  
 126 MARLBOROUGH STREET BOSTON, MASSACHUSETTS  
 MARCH 11, 2020





126 MARLBOROUGH STREET

- PARKING ENCLOSURE
- EXISTING ROOF EXTENT
- EXISTING HEADHOUSES

**SURROUNDING STRUCTURES**  
 126 MARLBOROUGH STREET BOSTON, MASSACHUSETTS  
 MARCH 11, 2020 1" = 1'-0"





EXISTING ROOF DECK - MECHANICAL



EXISTING ROOF DECK - SKYLIGHT



EXISTING ROOF DECK - HEADHOUSE

**EXISTING EXTERIOR ROOF DECK PHOTOS**  
126 MARLBOROUGH STREET BOSTON, MASSACHUSETTS  
MARCH 11, 2020





121 COMMONWEALTH AVENUE - PUBLIC ALLEY 424



138 MARLBOROUGH STREET - PUBLIC ALLEY 424



122 MARLBOROUGH STREET - PUBLIC ALLEY 424

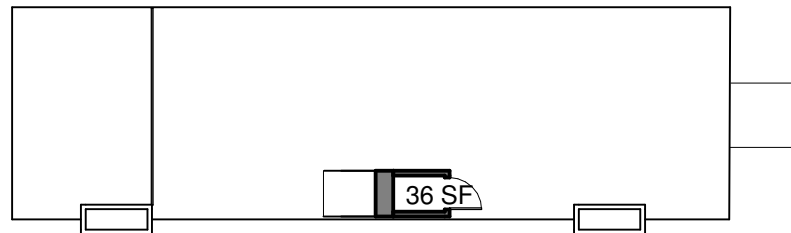


117 COMMONWEALTH AVENUE - PUBLIC ALLEY 424

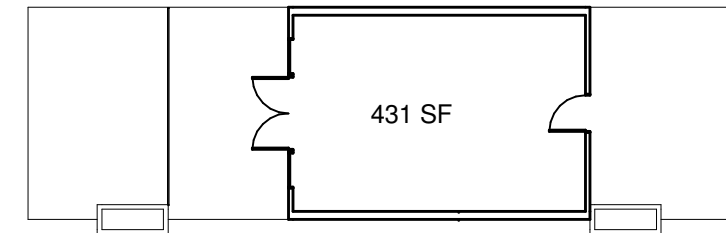
### GARAGE PRECEDENTS

126 MARLBOROUGH STREET BOSTON, MASSACHUSETTS  
MARCH 11, 2020

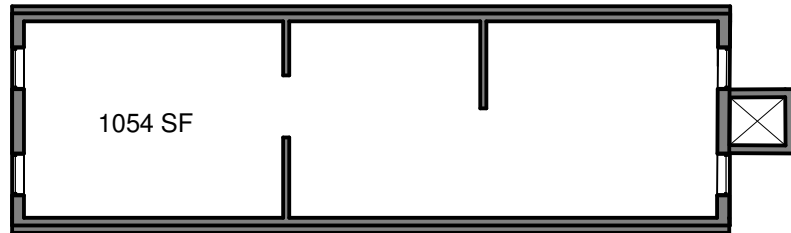




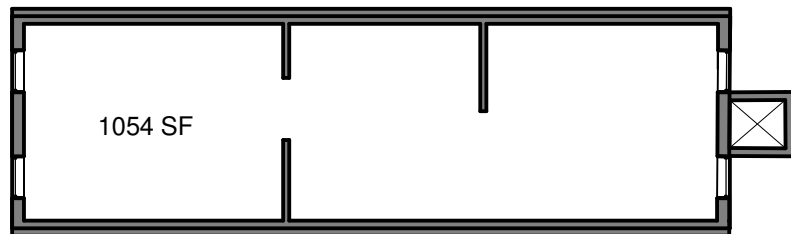
EXISTING - FIFTH FLOOR PLAN



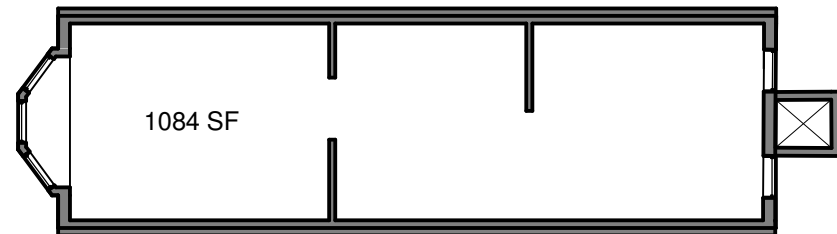
PROPOSED - FIFTH FLOOR PLAN



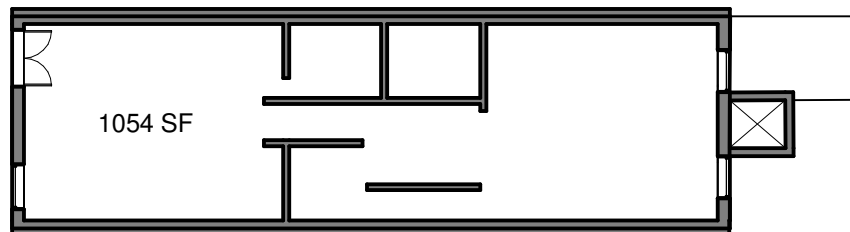
EXISTING - FOURTH FLOOR PLAN



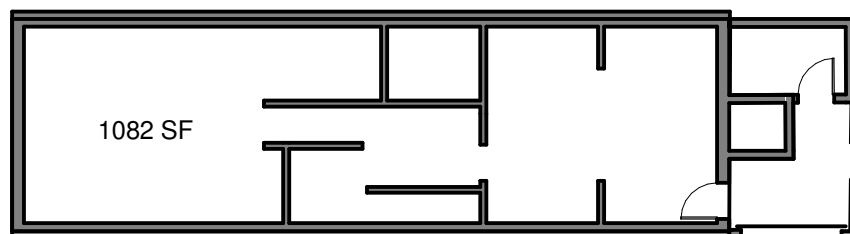
EXISTING - THIRD FLOOR PLAN



EXISTING - SECOND FLOOR PLAN



EXISTING - FIRST FLOOR PLAN



EXISTING - GARDEN FLOOR PLAN

ZONING INFORMATION  
 LOT SIZE: 1,977 SF  
 ALLOWED FAR: 3  
 EXISTING FAR: 2.71  
 PROPOSED FAR: 2.78  
 MAX ALLOWED: 5,931 SF

Level	Existing Area	Proposed Area
Garden	1082 SF	916 SF
Level 1	1054 SF	1054 SF
Level 2	1084 SF	1049 SF
Level 3	1054 SF	1019 SF
Level 4	1054 SF	1019 SF
Level 5	36 SF	431 SF
Total Area	5364 SF	5487 SF



PROPOSED - FIRST FLOOR PLAN

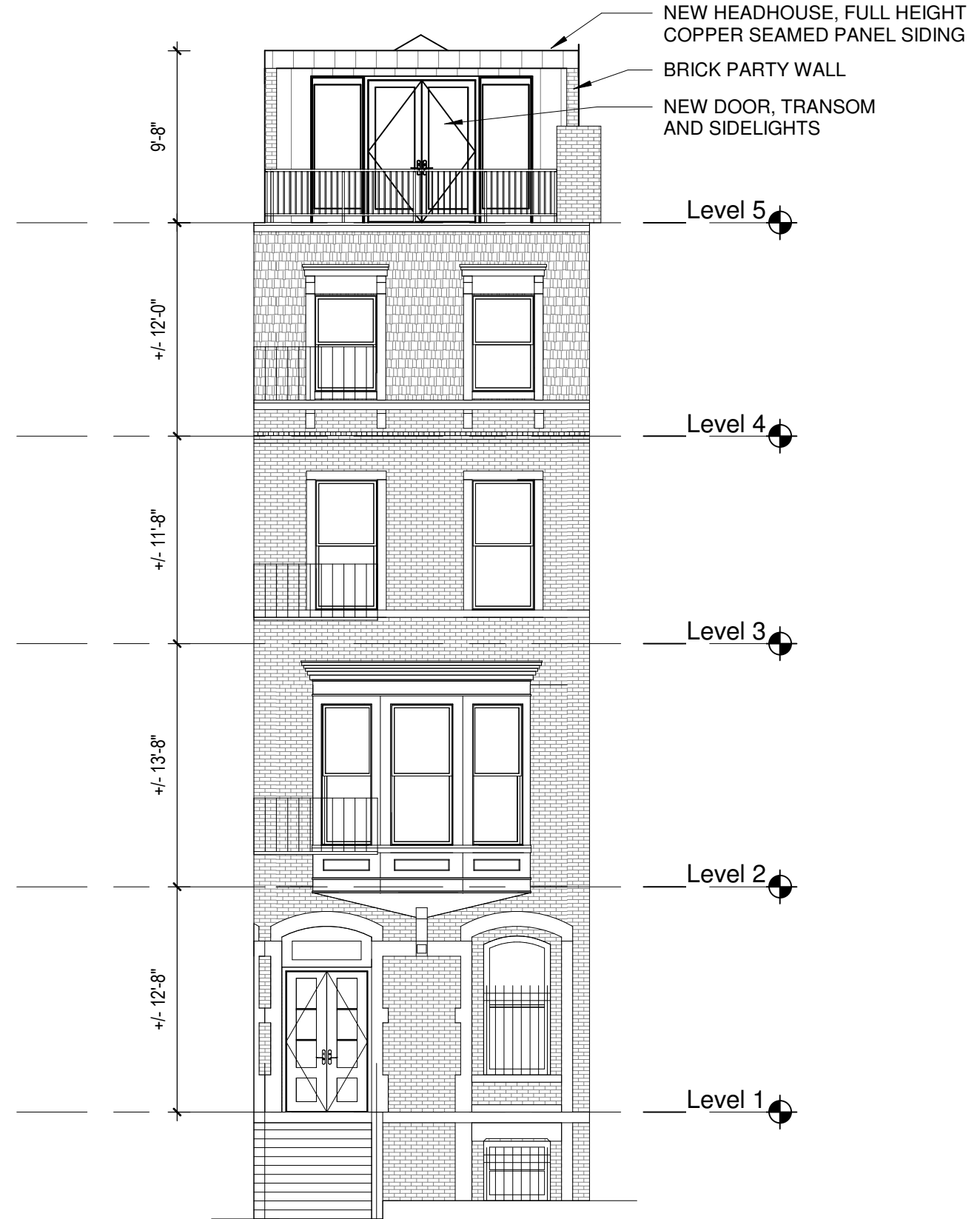


PROPOSED - GARDEN FLOOR PLAN





EXISTING



PROPOSED

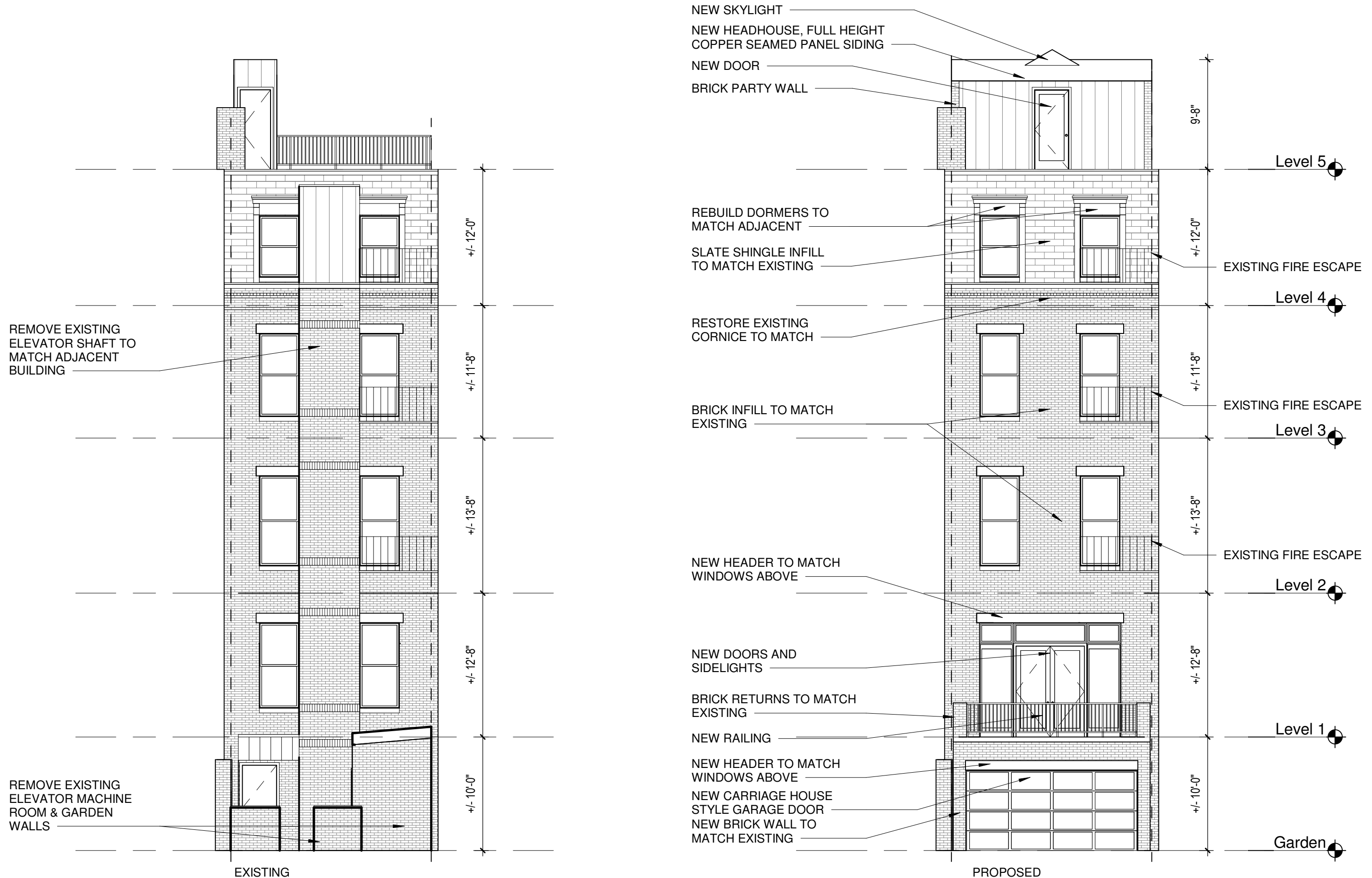
**MARLBOROUGH BUILDING ELEVATIONS**

126 MARLBOROUGH STREET BOSTON, MASSACHUSETTS

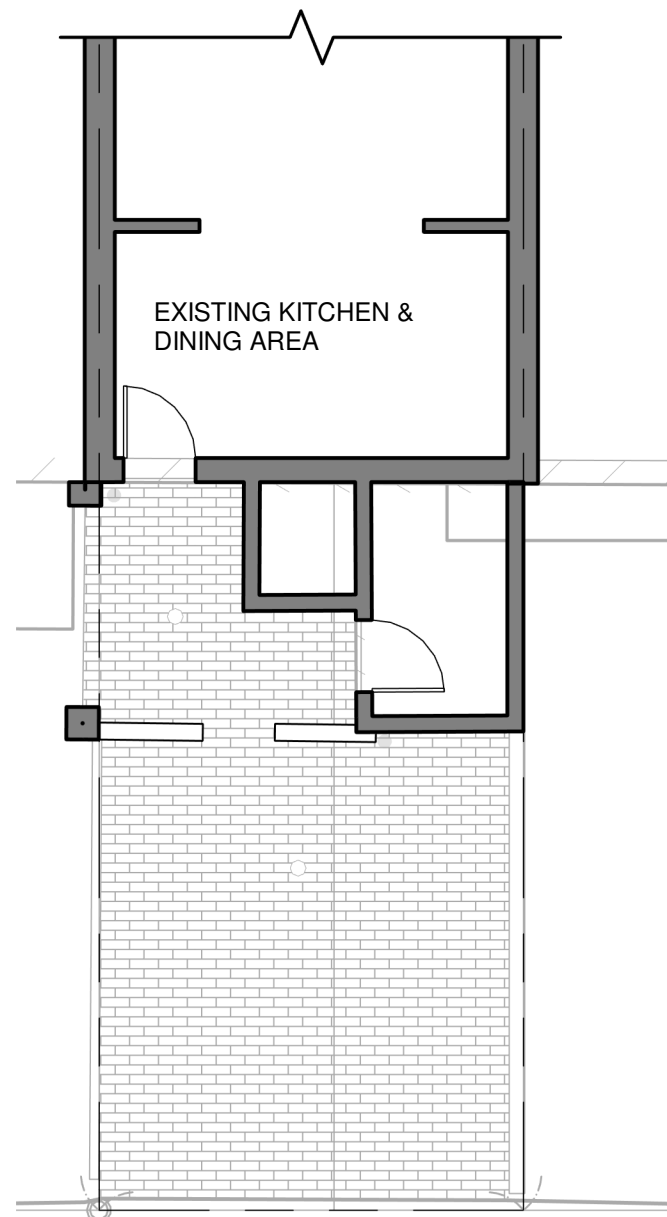
MARCH 11, 2020 1/8" = 1'-0"



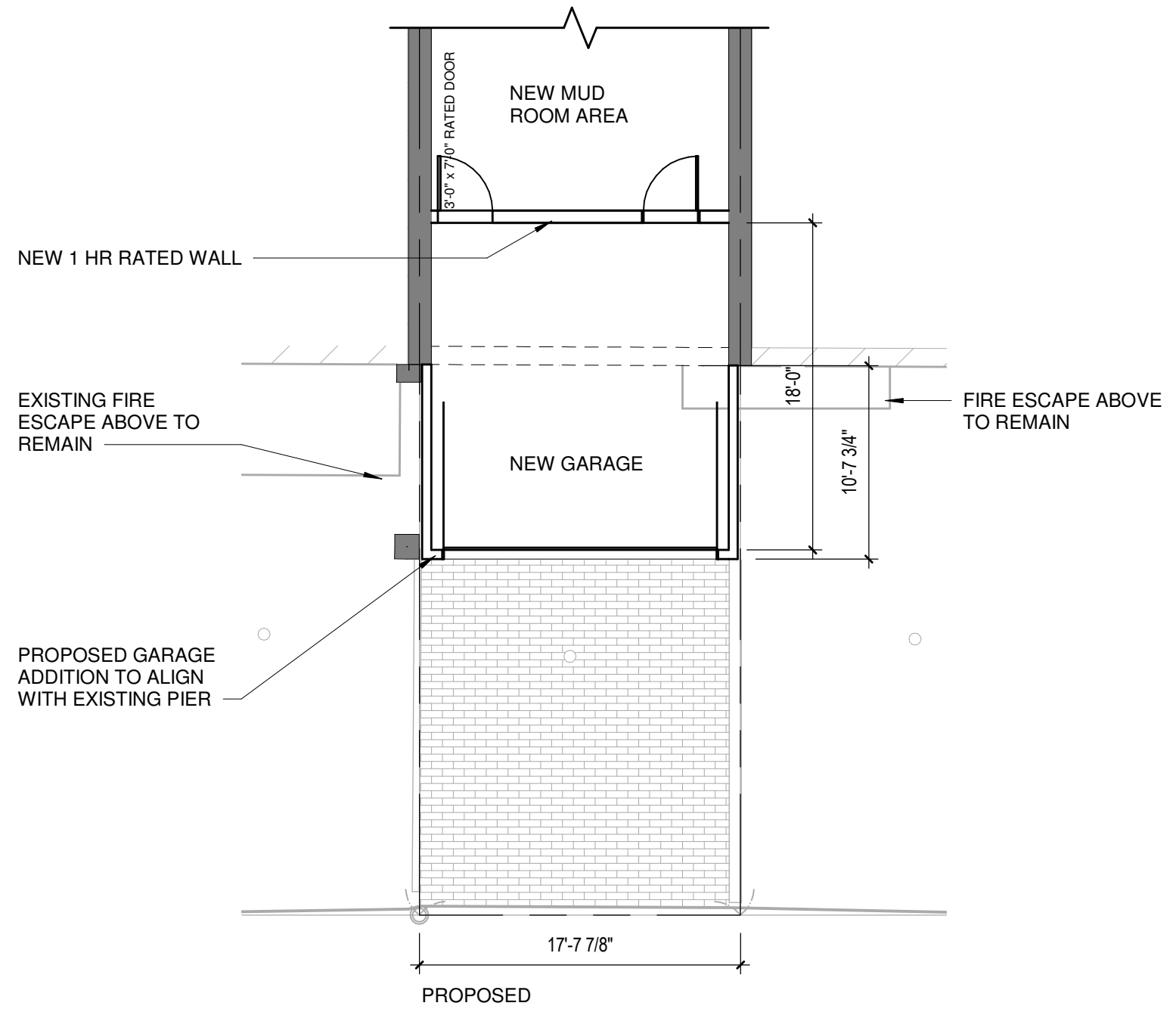
2/19/2020 9:51:24 AM







EXISTING



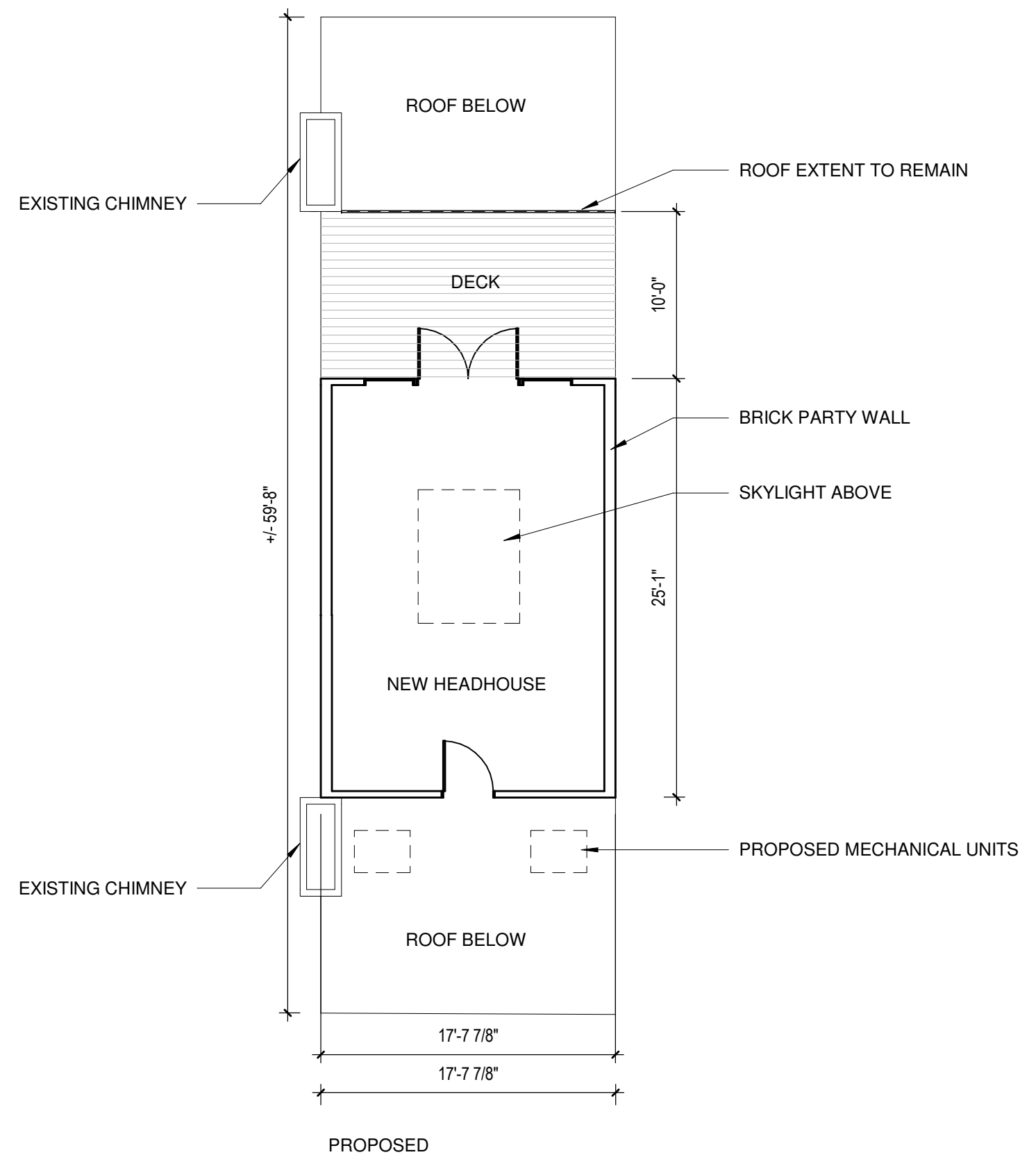
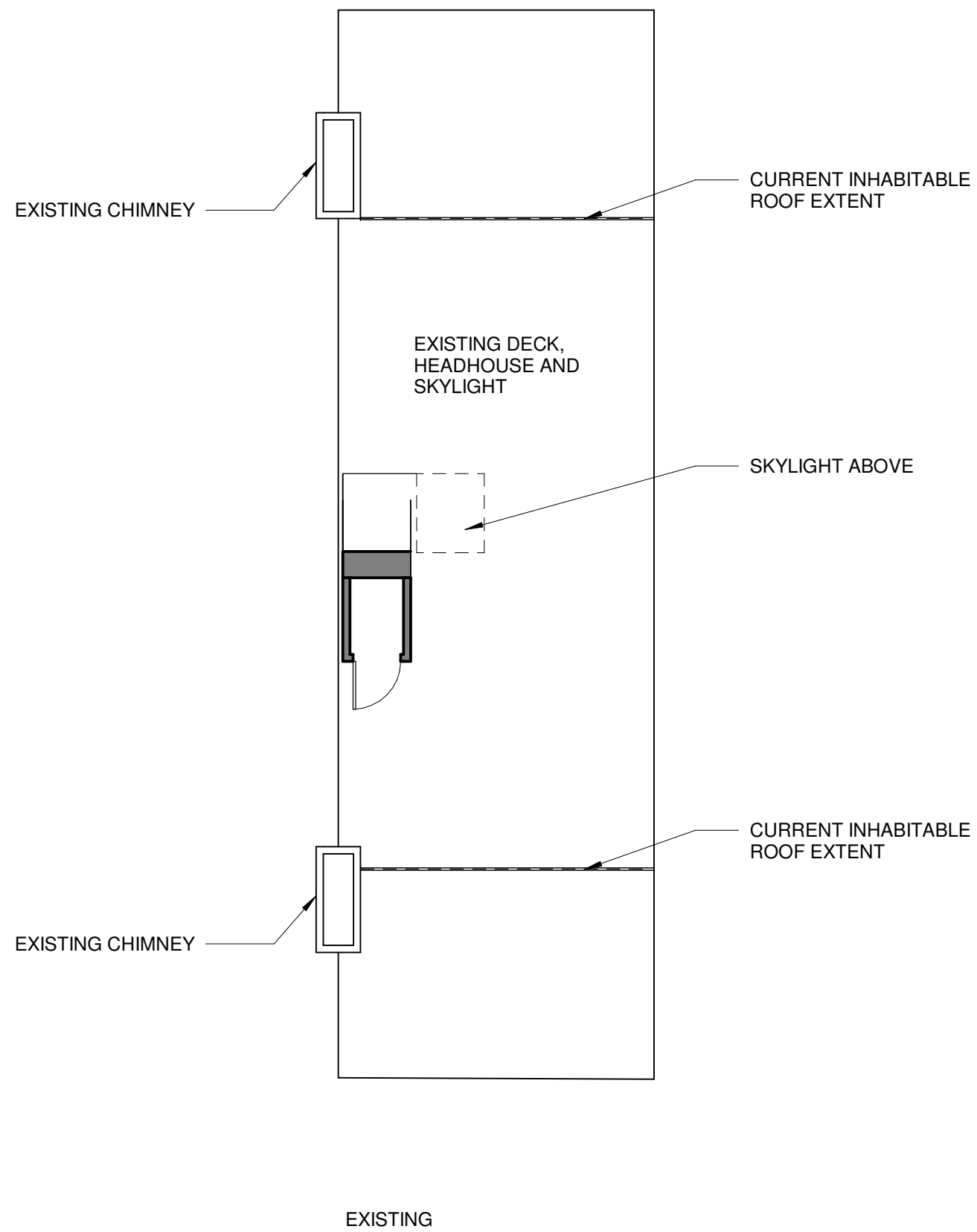
PROPOSED

**GARDEN FLOOR PLANS**

126 MARLBOROUGH STREET BOSTON, MASSACHUSETTS  
 MARCH 11, 2020 1/8" = 1'-0"



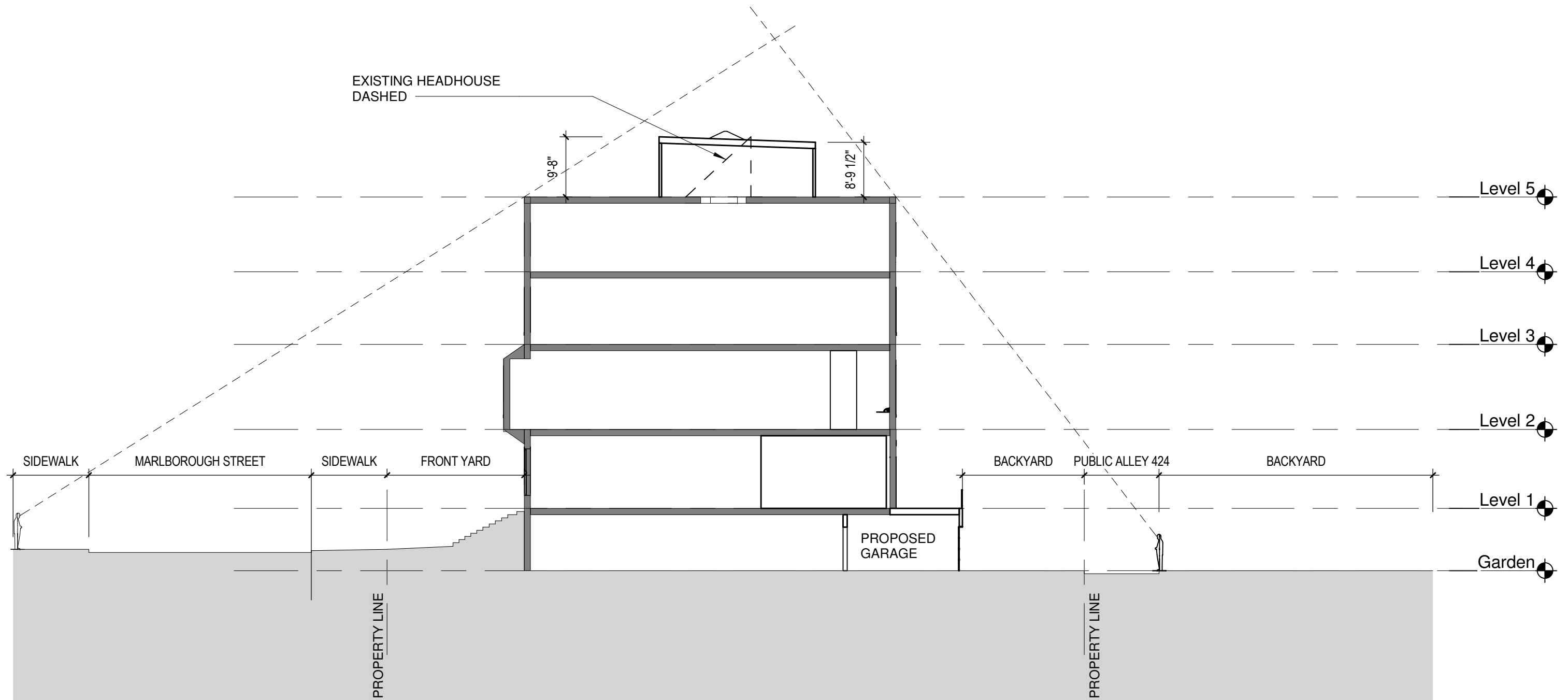
2/19/2020 9:51:25 AM



**ROOF FLOOR PLAN**

126 MARLBOROUGH STREET BOSTON, MASSACHUSETTS  
MARCH 11, 2020 1/8" = 1'-0"





2/19/2020 9:51:25 AM

**LINE OF SIGHT DIAGRAM**

126 MARLBOROUGH STREET BOSTON, MASSACHUSETTS  
MARCH 11, 2020 1/16" = 1'-0"

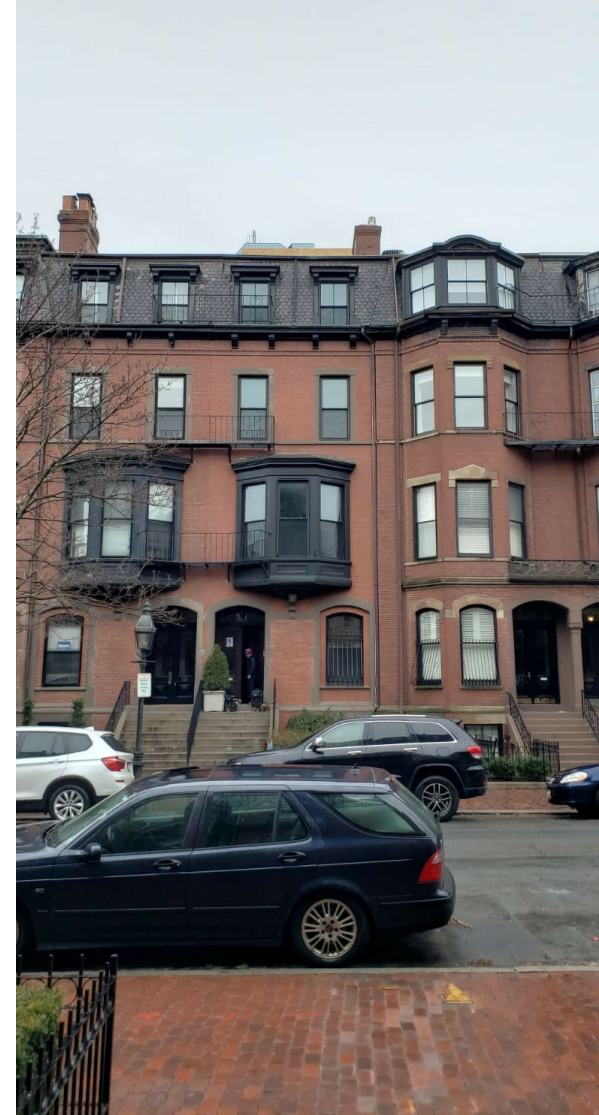




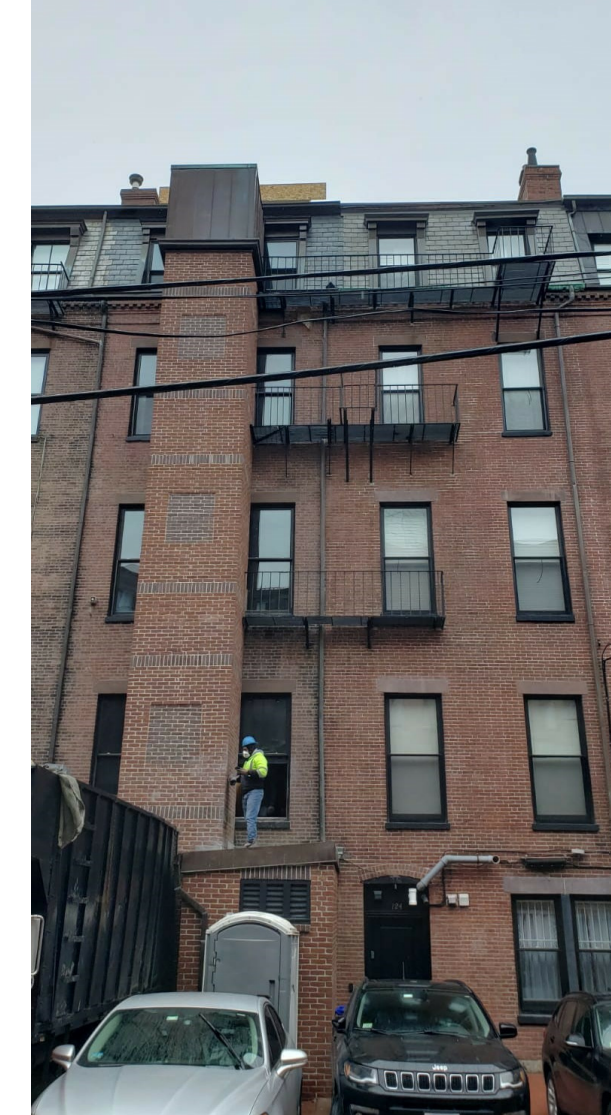
MARLBOROUGH STREET -  
SIDEWALK



MARLBOROUGH STREET -  
NEIGHBORS ENTRYWAY



ALLEY 424 -  
PUBLIC WAY



ALLEY 424 -  
PUBLIC WAY



2/19/2020 9:51:25 AM





Air Conditioning & Heating

# GSX13 SPLIT SYSTEM AIR CONDITIONER 13 SEER / 1 1/2 TO 5 TONS

COOLING CAPACITY: 18,000 - 60,000 BTU/H

Contents	
Nomenclature	2
Product Specifications	3
Expanded Cooling Data	4
AHRI Ratings	22
Dimensions	39
Wiring Diagrams	40
Accessories	44



- Standard Features**
- R-410A chlorine-free refrigerant
  - Energy-efficient compressor
  - Factory-installed filter drier
  - Copper tube/aluminum fin coil
  - Service valves with sweat connections and easy-access gauge ports
  - Contact with lug connection
  - Ground lug connection
  - AHRI Certified
  - ETL Listed

- Cabinet Features**
- Goodman® brand lowered sound control top design
  - Steel lower coil guard
  - Heavy-gauge galvanized-steel cabinet
  - Attractive Architectural Gray powder-paint finish with 500-hour salt-spray approval
  - Top and side maintenance access
  - Single-panel access to controls with space provided for field-installed accessories
  - When properly anchored, meets the 2010 Florida Building Code unit integrity requirements for hurricane-type winds (Anchor bracket kits available.)



Complete warranty details available from your local dealer or at [www.goodmanmfg.com](http://www.goodmanmfg.com). To receive the 10 Year Parts Limited Warranty, online registration must be completed within 90 days of installation. Online registration not required in California or Quebec.

SS-GSX13

[www.goodmanmfg.com](http://www.goodmanmfg.com)

3/14  
Supersedes 2/14A

## PRODUCT SPECIFICATIONS

### NOMENCLATURE

	G	S	X	13	036	1	*	*		
	1	2	3	4,5	6,7,8	9	10	11		
<b>Brand</b>	Goodman® Brand or Amana® Distinctions® Brand							<b>Engineering*</b> Minor Revision		
<b>Product Category</b>	Split System							<b>Engineering*</b> Major Revision		
<b>Unit Type</b>	C	Condenser R-22							<b>Electrical</b>	
	X	Condenser R-410A							1 208-230 V, 1 Phase, 60 Hz	
	H	Heat Pump R-22							2 220/240 V, 1 Phase, 50 Hz	
	Z	Heat Pump R-410A							3 208-230 V, 3 Phase, 60 Hz	
									4 480 V, 3 Phase, 60 Hz	
									5 380-415 V, 3 Phase, 50 Hz	
<b>Efficiency</b>	13	13 SEER							Nominal Capacity	
	14	14 SEER							018 1 1/2 Tons 048 4 Tons	
									024 2 Tons 060 5 Tons	
									030 2 1/2 Tons 090 7 1/2 Tons	
									036 3 Tons 120 10 Tons	
									042 3 1/2 Tons	

\* Neither used for order entry or inventory management.



[www.goodmanmfg.com](http://www.goodmanmfg.com)

SS-GSX13

## PRODUCT SPECIFICATIONS

### SPECIFICATIONS

	GSX13 0181E*	GSX13 0241D*	GSX13 0301B*	GSX13 0361C*	GSX13 0361E*	GSX13 0421B*	GSX13 0481B*	GSX13 0601B*	GSX13 0611A*
<b>CAPACITIES</b>									
Nominal Cooling (BTU/h)	18,000	24,000	30,000	36,000	36,000	42,000	48,000	60,000	60,000
SEER / EER	13 / 11	13 / 11	13 / 11	13 / 11	13 / 11	13 / 11	13 / 11	13 / 11	13 / 11
Decibels	75	75	73	74	74	75	76	77	72
<b>COMPRESSOR</b>									
RIA	6.7	13.5	12.8	14.1	14.1	17.9	19.9	25.0	26.4
LRA	41	58.3	64	77	77	112	109	134	134
<b>CONDENSER FAN MOTOR</b>									
Horsepower	1/8	1/8	1/8	1/8	1/4	1/4	1/4	1/4	1/4
FLA	0.7	0.7	0.7	1.1	1.5	1.5	1.5	1.5	1.5
<b>REFRIGERATION SYSTEM</b>									
Refrigerant Line Size <sup>1</sup>									
Liquid Line Size ("O.D.)	3/8"	3/8"	3/8"	3/8"	3/8"	3/8"	3/8"	3/8"	3/8"
Suction Line Size ("O.D.)	3/8"	3/8"	3/8"	3/8"	3/8"	1 1/8"	1 1/8"	1 1/8"	3/8"
Refrigerant Connection Size									
Liquid Valve Size ("O.D.)	3/8"	3/8"	3/8"	3/8"	3/8"	3/8"	3/8"	3/8"	3/8"
Suction Valve Size ("O.D.) <sup>2,3</sup>	3/8"	3/8"	3/8"	3/8"	3/8"	3/8"	3/8"	3/8"	3/8"
Valve Type	Sweat	Sweat	Sweat	Sweat	Sweat	Sweat	Sweat	Sweat	Sweat
Refrigerant Charge	73	76	78	89	75	90	104	111	130
Shipped with Orifice Size	0.051	0.057	0.061	0.070	0.070	0.076	0.080	0.086	0.086
<b>ELECTRICAL DATA</b>									
Voltage	208/230	208/230	208/230	208/230	208/230	208/230	208/230	208/230	208/230
Minimum Circuit Ampacity <sup>4</sup>	9.1	17.6	16.7	18.7	19.1	23.9	26.4	32.8	34.5
Max. Overcurrent Protection <sup>5</sup>	15 amps	30 amps	25 amps	30 amps	30 amps	40 amps	45 amps	50 amps	60 amps
Min / Max Volts	197/253	197/253	197/253	197/253	197/253	197/253	197/253	197/253	197/253
Electrical Conduit Size	1/2" or 3/4"	3/4" or 1"	3/4" or 1"	3/4" or 1"	3/4" or 1"	3/4" or 1"	3/4" or 1"	3/4" or 1"	3/4" or 1"
<b>EQUIPMENT WEIGHT (LBS)</b>									
SHR WEIGHT (LBS)	102	115	115	139	118	171	175	184	211
	117	128	132	157	135	189	193	202	233

<sup>1</sup> Line sizes denoted for 25' line sets. Install and rated in accordance with AHRI Standard 210/240. For other line-set lengths or sizes, refer to the installation & Operating Instructions and/or the long line-set guidelines.

<sup>2</sup> Wire size should be determined in accordance with National Electrical Codes; extensive wire runs will require larger wire sizes.

<sup>3</sup> Must use time-delay fuses or HACR-type circuit breakers of the same size as noted.

<sup>4</sup> Installer will need to supply 1/2" to 1" adapters for suction line connections.

<sup>5</sup> Installer will need to supply 1/2" to 1 1/4" adapters for suction line connections.

### NOTES

- Always check the S&R plate for electrical data on the unit being installed.
- Unit is charged with refrigerant for 15' of 3/8" liquid line. System charge must be adjusted per installation instructions Final Charge Procedure.

SS-GSX13

[www.goodmanmfg.com](http://www.goodmanmfg.com)

3

## PRODUCT SPECIFICATIONS

### AHRI RATINGS (CONT.)

OUTDOOR UNIT	INDOOR UNITS		COOLING RATINGS				CFM	AHRI #
	COILS/AIR HANDLERS	FURNACES	TOTAL <sup>1</sup>	SENS. <sup>2</sup>	SEER <sup>3</sup>	EER <sup>3</sup>		
GSX13 0611A* (cont.)	CSCF4860N6D*+TXV	A*VC350905DXB*	55,000	37,600	13.50	11.00	1,475	5621124
	CSCF4860N6D*+TXV	A*VC350915DXB*	55,000	37,600	13.00	11.00	1,575	5621133
	CSCF4860N6D*+TXV	G*VC350915DXB*	55,000	37,600	13.00	11.00	1,575	5621134
	CSCF4860N6D*+TXV	A*VC351155DXB*	55,000	37,600	13.50	11.00	1,550	5621143
	CSCF4860N6D*+TXV	A*VM960805CXB*	55,500	38,000	13.00	11.00	1,460	5621152
	CSCF4860N6D*+TXV	G*VM960805CXB*	55,500	38,000	13.00	11.00	1,460	5621153
	CSCF4860N6D*+TXV	A*VM960805DXB*	55,500	38,000	13.00	11.00	1,460	5621162
	CSCF4860N6D*+TXV	G*VM960805DXB*	55,500	38,000	13.00	11.00	1,460	5621163
	CSCF4860N6D*+TXV	A*VM961005DXB*	55,000	37,600	13.50	11.00	1,550	5621172
	CSCF4860N6D*+TXV	G*VM961005DXB*	55,000	37,600	13.50	11.00	1,550	5621173
	CSCF4860N6D*+TXV	A*VM961155DXB*	55,000	37,600	13.50	11.00	1,550	5621182
	CSCF4860N6D*+TXV	G*VM961155DXB*	55,000	37,600	13.50	11.00	1,550	5621183
	CSCF4860N6D*+TXV	A*EH800805C*A*	54,500	37,400	13.00	11.00	1,550	6944974
	CSCF4860N6D*+TXV	A*EH801005C*A*	55,500	38,000	13.50	11.00	1,525	6944976
	CSCF4860N6D*+TXV	AMEH960805CXA*	55,000	37,600	13.00	11.00	1,475	6944978
	CSCF4860N6D*+TXV	AMEH961005DXA*	55,000	37,600	13.50	11.00	1,500	6944980

<sup>1</sup> BTU/h

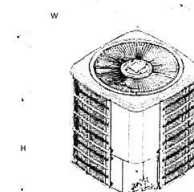
<sup>2</sup> Seasonal Energy Efficiency Ratio; Certified per AHRI 210/240 @ 80°F/67°F/95°F

<sup>3</sup> Energy Efficiency Ratio @ 80°F/67°F/95°F

### NOTES

- Always check the S&R plate for electrical data on the unit being installed.
- When matching the outdoor unit to the indoor unit, use the piston supplied with the outdoor unit or that specified on the piston kit chart supplied with the indoor unit.
- EFP - Order from Service Dept. Part No. B13707-38 or new Solid State Board B13707-35S. Part No. B13707-38 is not interchangeable with B13707-35S. The Goodman Gas Furnace contains the EEP cooling time delay.

### DIMENSIONS



MODEL	DIMENSIONS		
	W"	D"	H"
GSX130181E*	23	23	25K
GSX130241D*	28	28	26K
GSX130301B*	26	26	27K
GSX130361C*	29	29	28K
GSX130361E*	26	26	27K
GSX130421B*	29	29	36K
GSX130481B*	29	29	36K
GSX130601B*	29	29	40
GSX130611A*	35K	35K	38K

SS-GSX13

[www.goodmanmfg.com](http://www.goodmanmfg.com)

39

## CONDENSERS

126 MARLBOROUGH STREET BOSTON, MASSACHUSETTS

MARCH 11, 2020