

# Countway Plaza Ramp

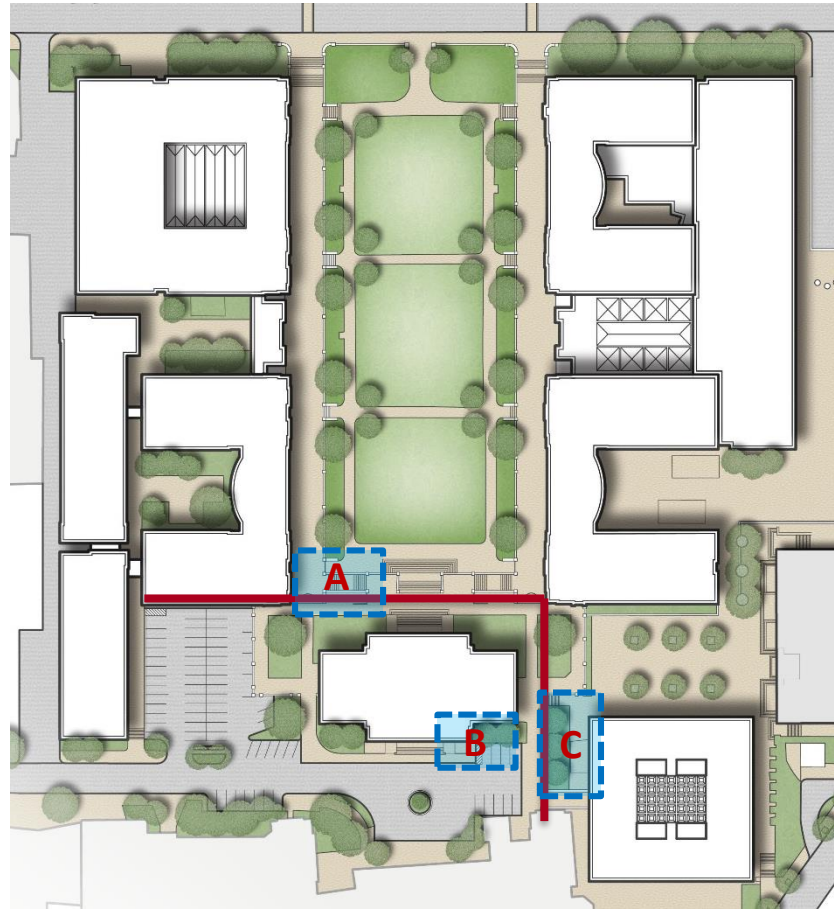
**LANDMARKS COMMISSION HEARING**

# Site Plan

**Location A: COMPLETE**  
Quad (1906)

**Location B: COMPLETE**  
Gordon Hall (1906)

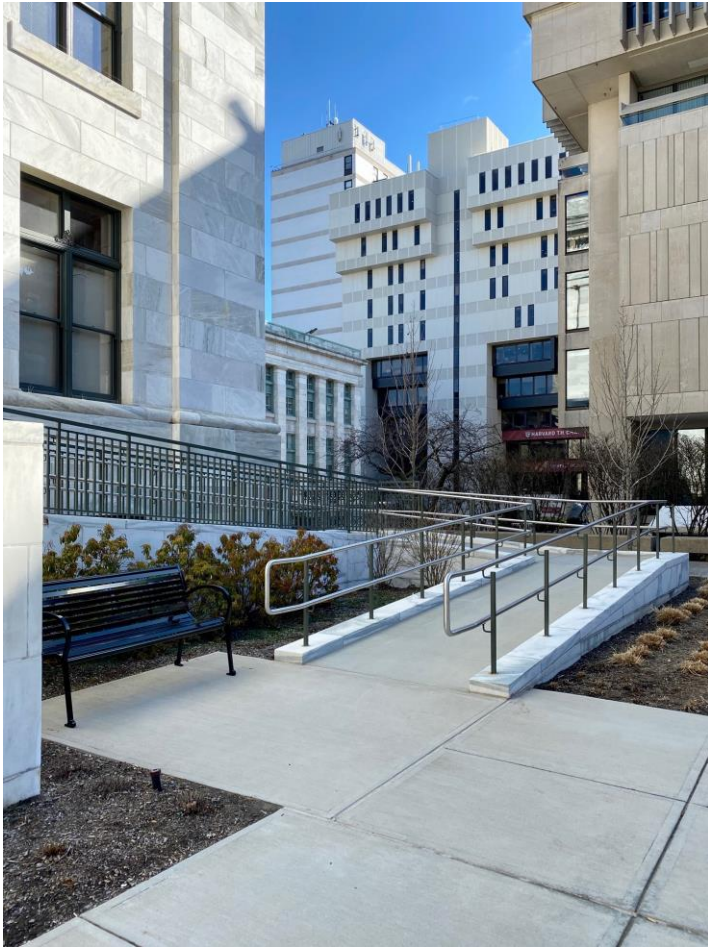
**Location C:**  
Countway (1965)



# Ramp A

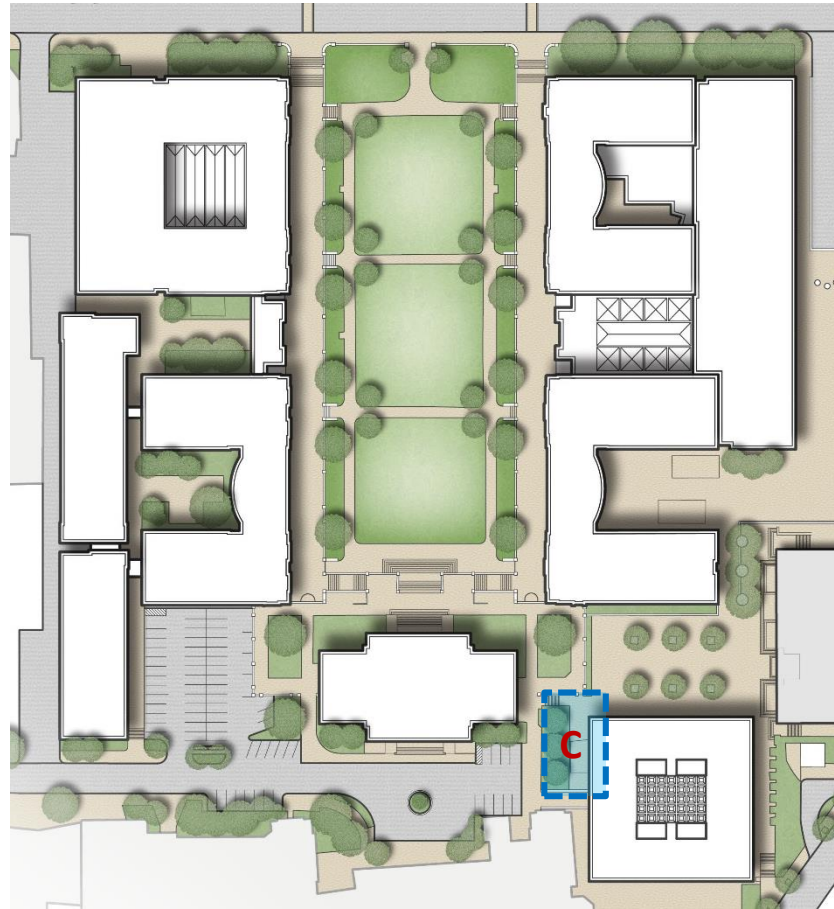


# Ramp B



# Site Plan

- **Location A:**  
Quad (1906)
- **Location B:**  
Gordon Hall (1906)
- **Location C:**  
Countway (1965)



# Existing Conditions

---



# Existing Conditions



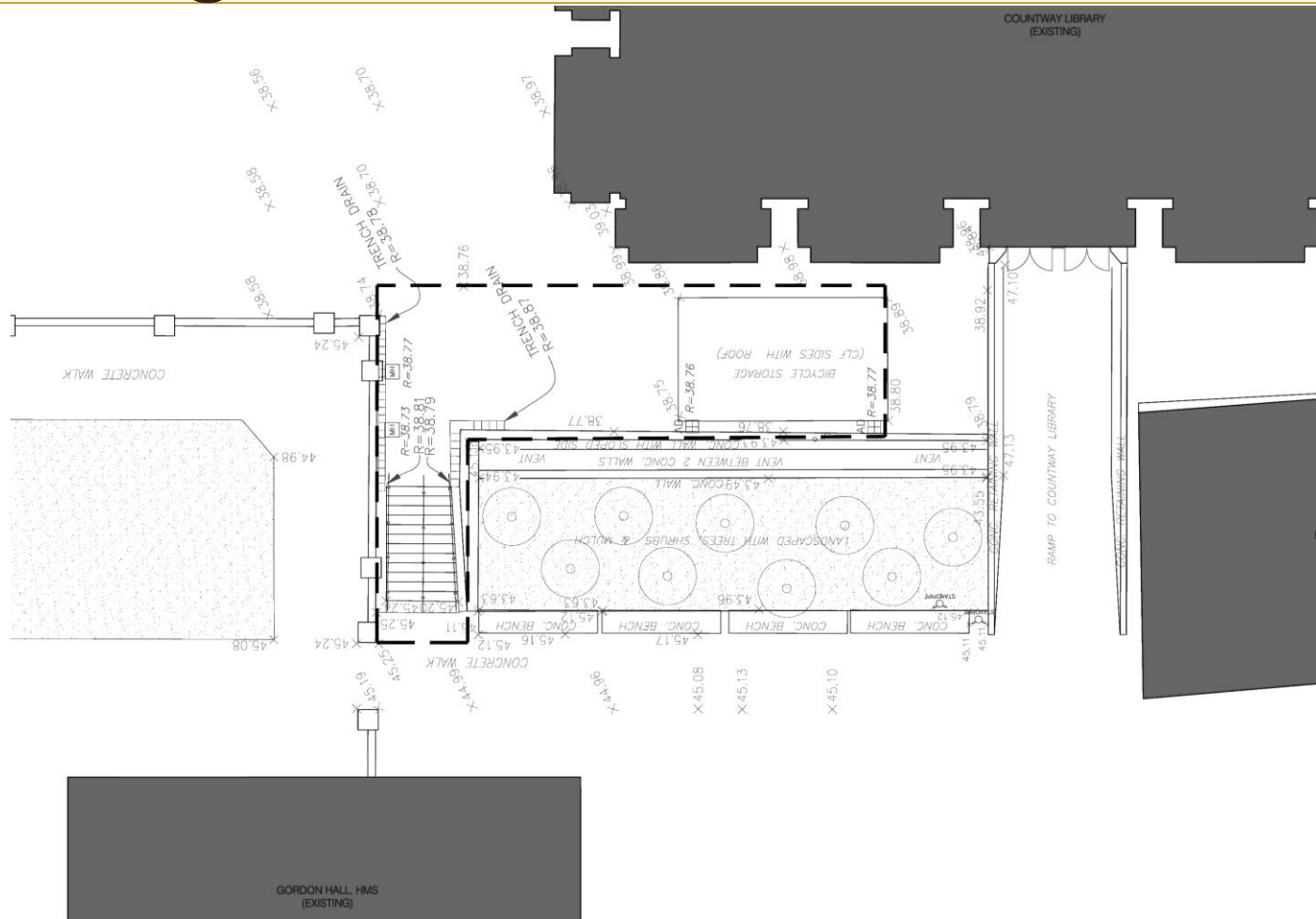
# Existing Conditions

---

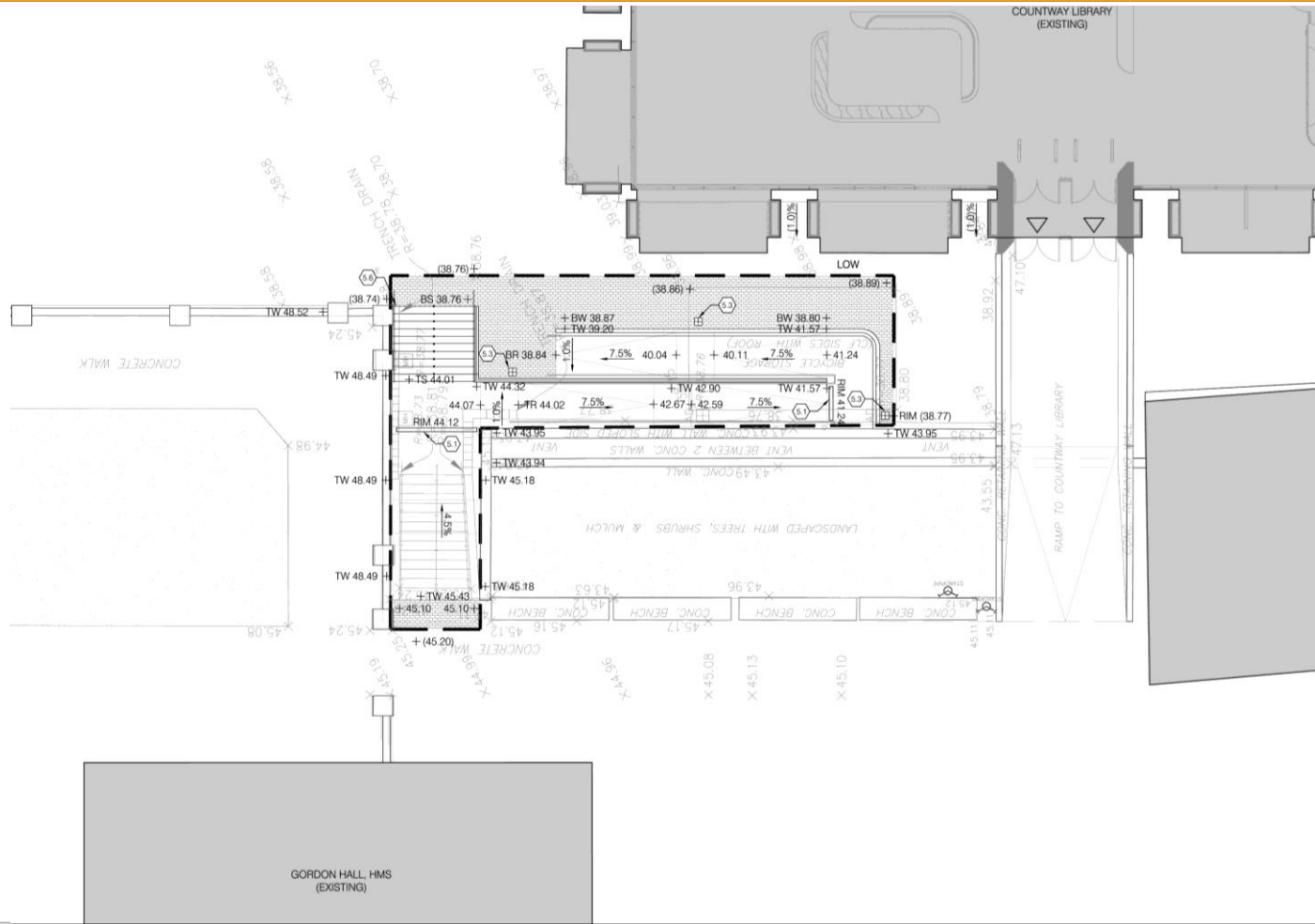




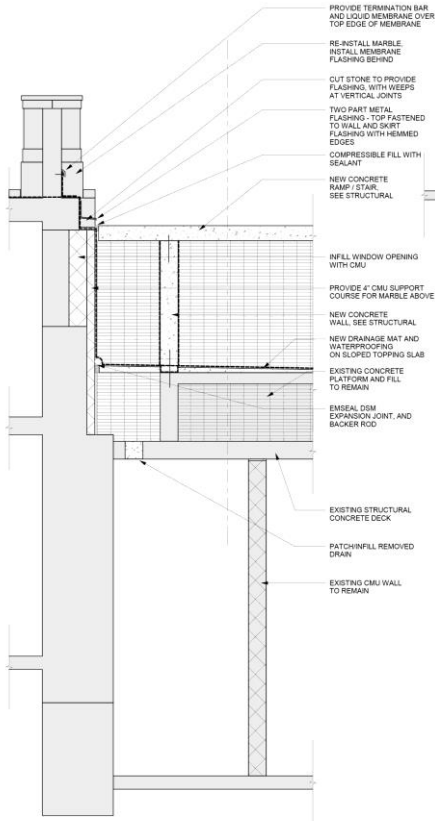
# Existing Site Plan



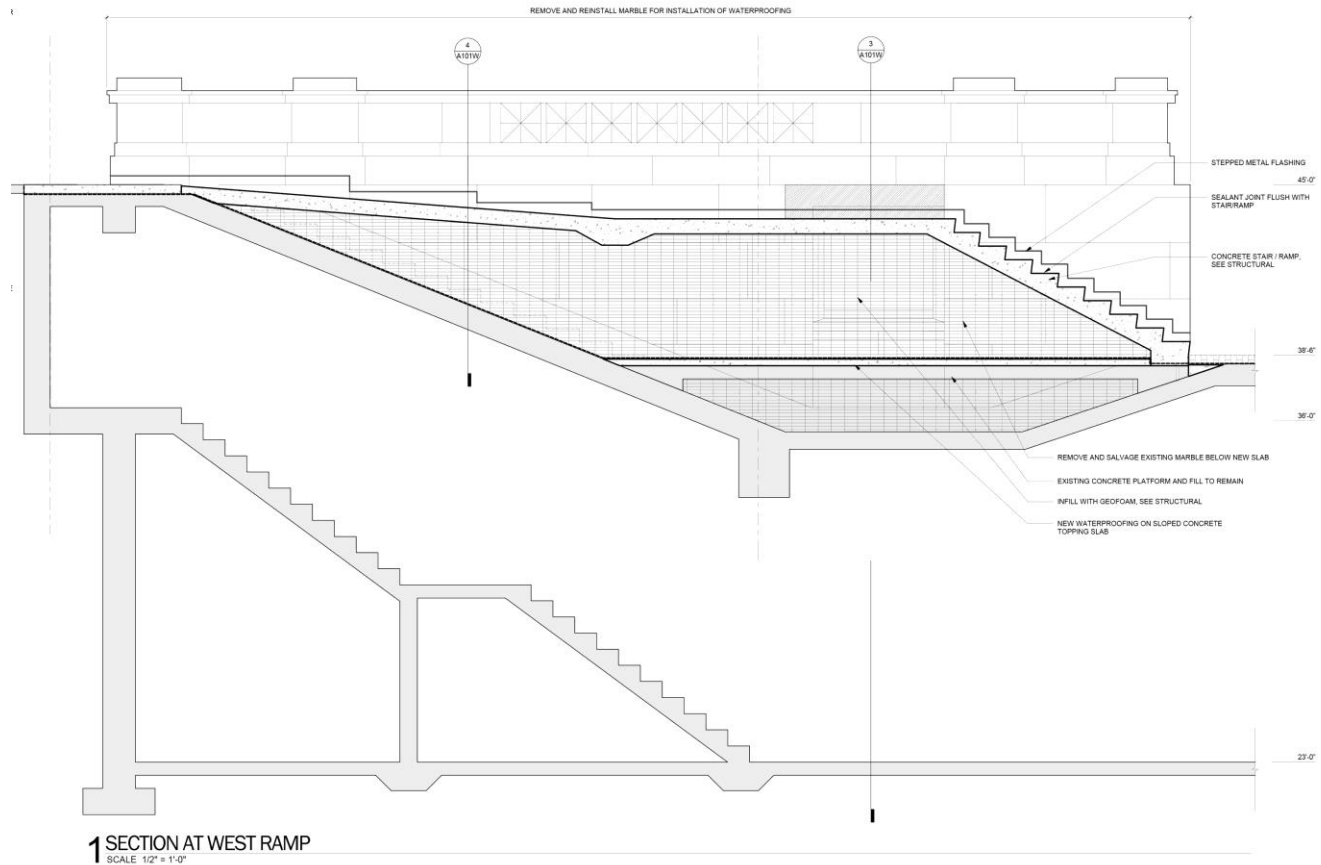
# Proposed Site Plan



# Section / Elevation

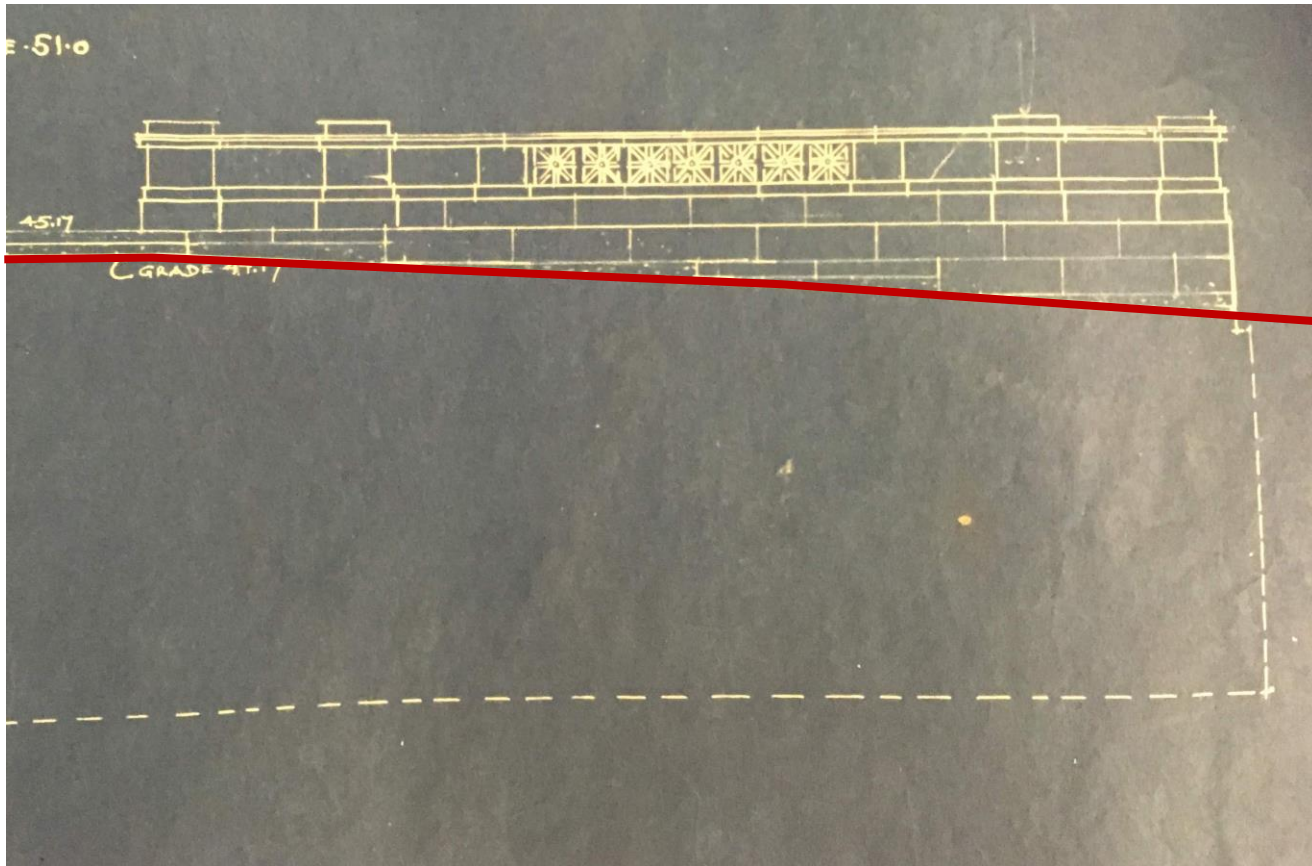


**3** WALL SECTION AT TUNNEL 2  
SCALE 1/2" = 1'-0"

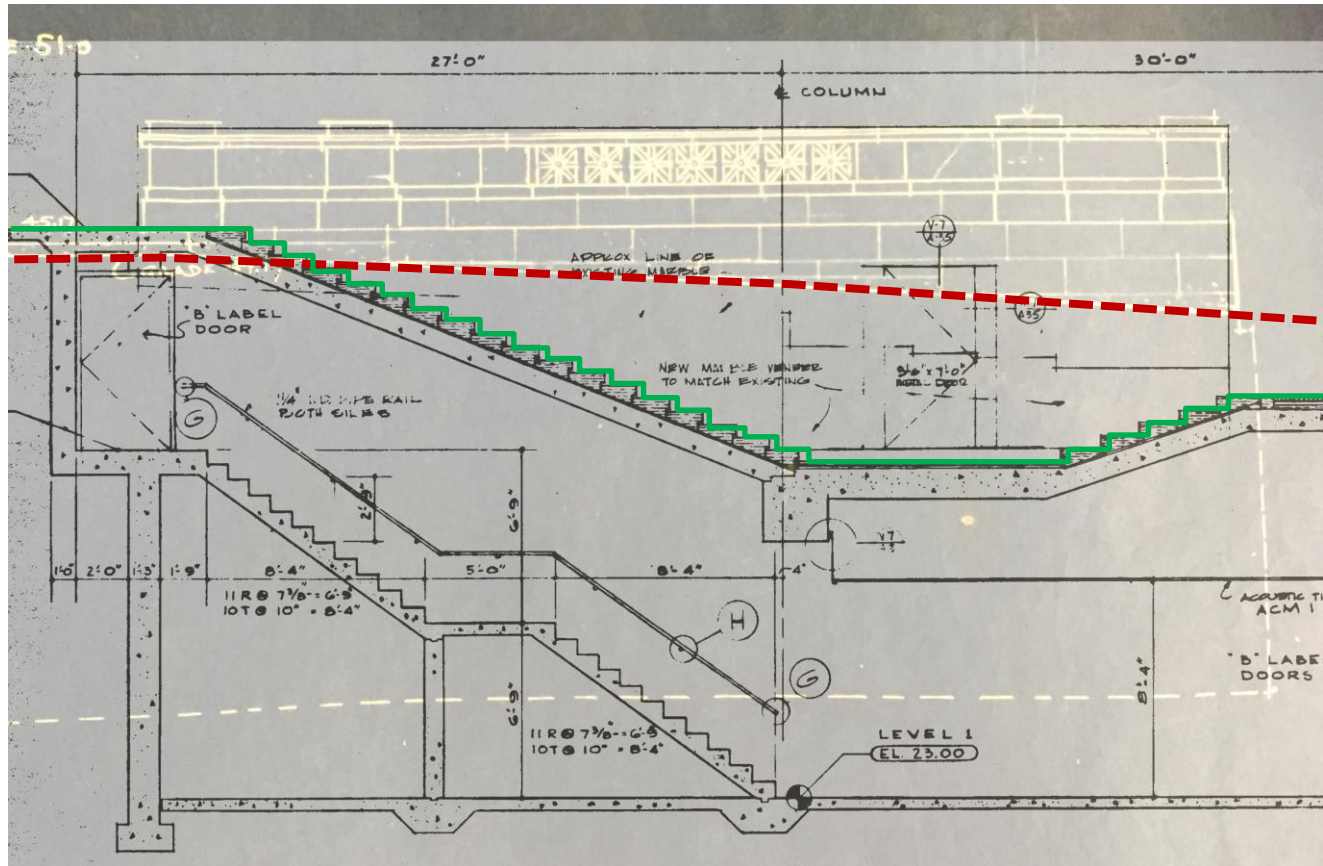


**1** SECTION AT WEST RAMP  
SCALE 1/2" = 1'-0"

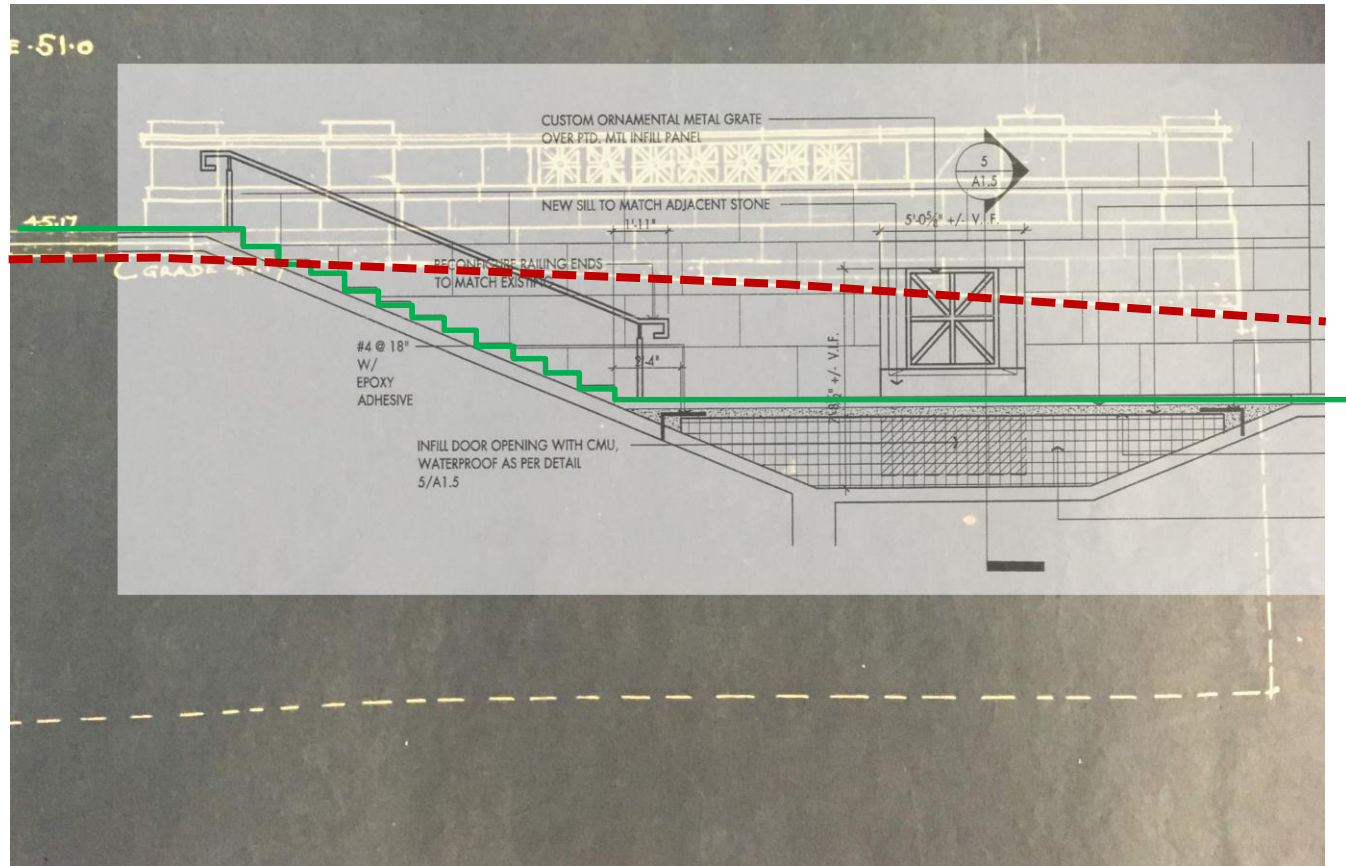
# HISTORY OF MARBLE WALL (1906)



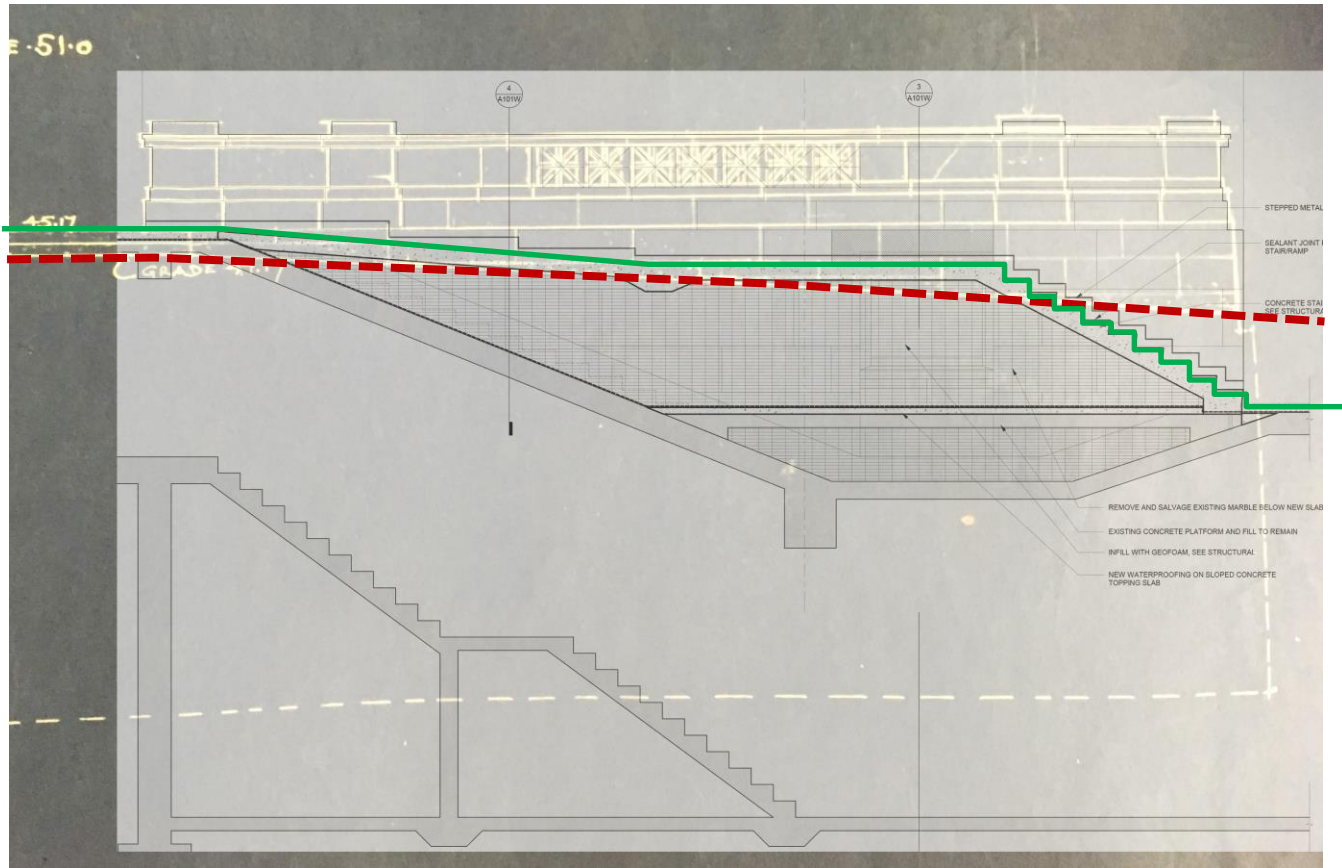
# HISTORY OF MARBLE WALL (1965)



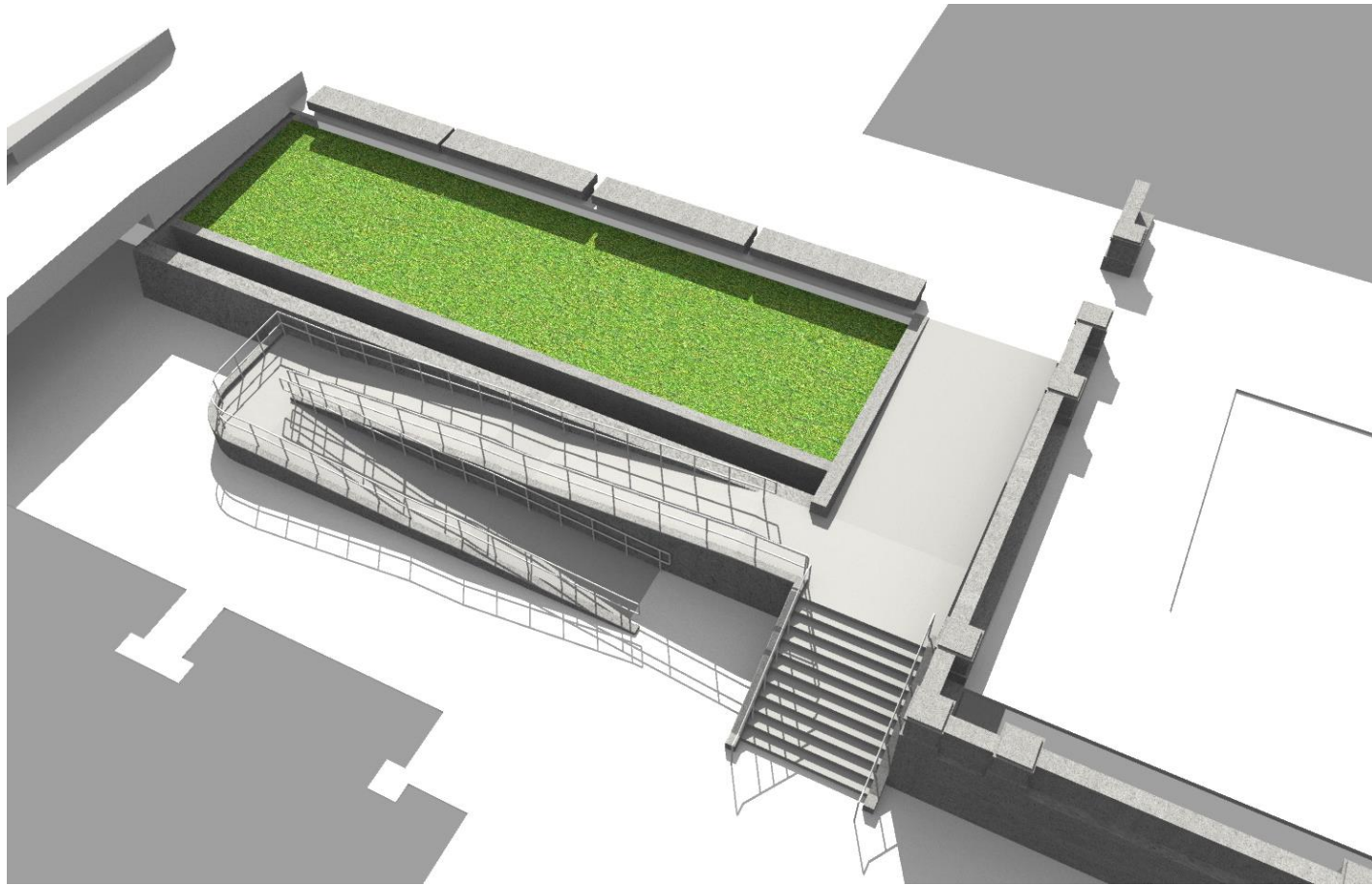
# HISTORY OF MARBLE WALL (2004)



# HISTORY OF MARBLE WALL (proposed)

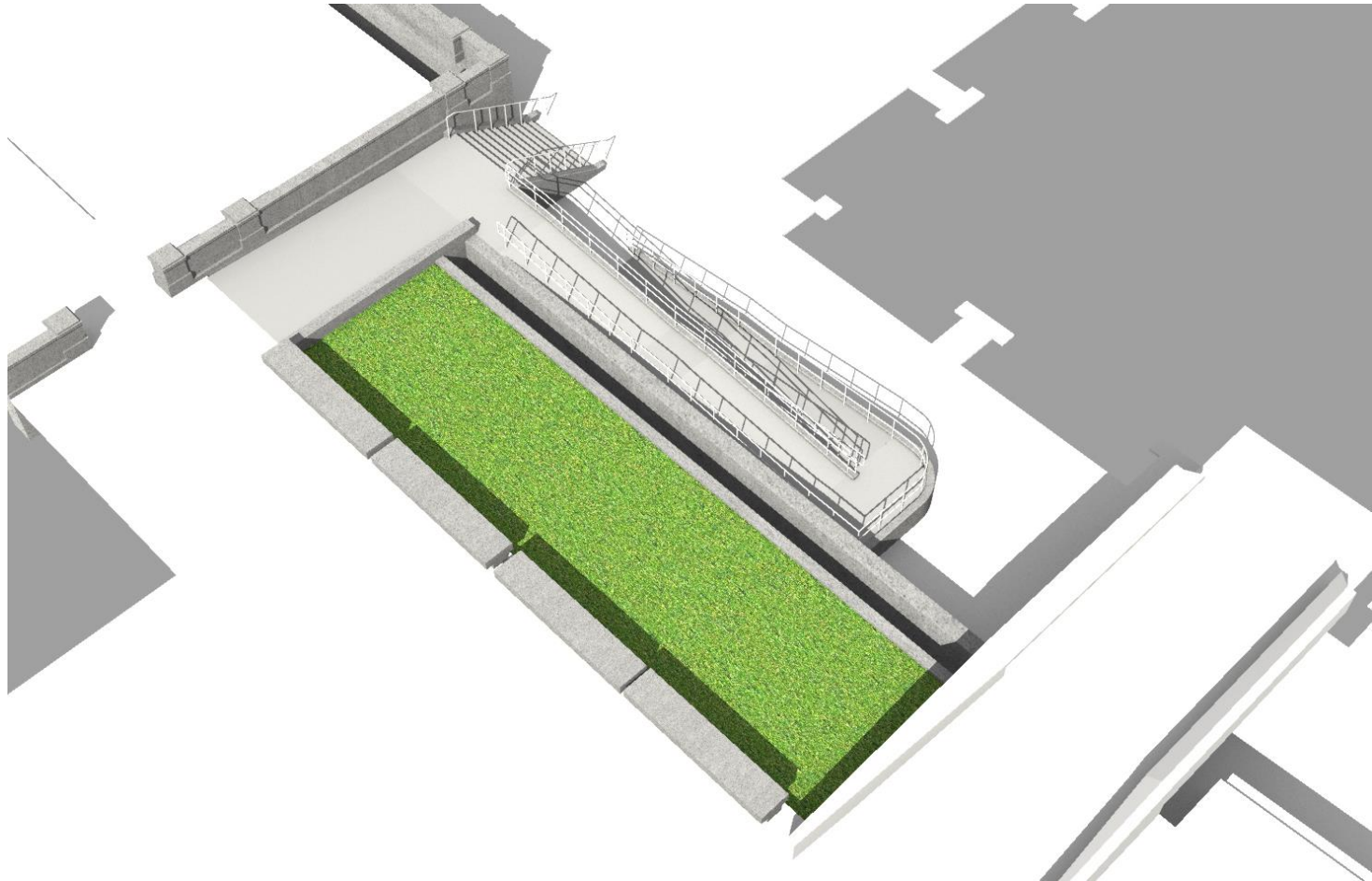


# Countway Plaza Ramp

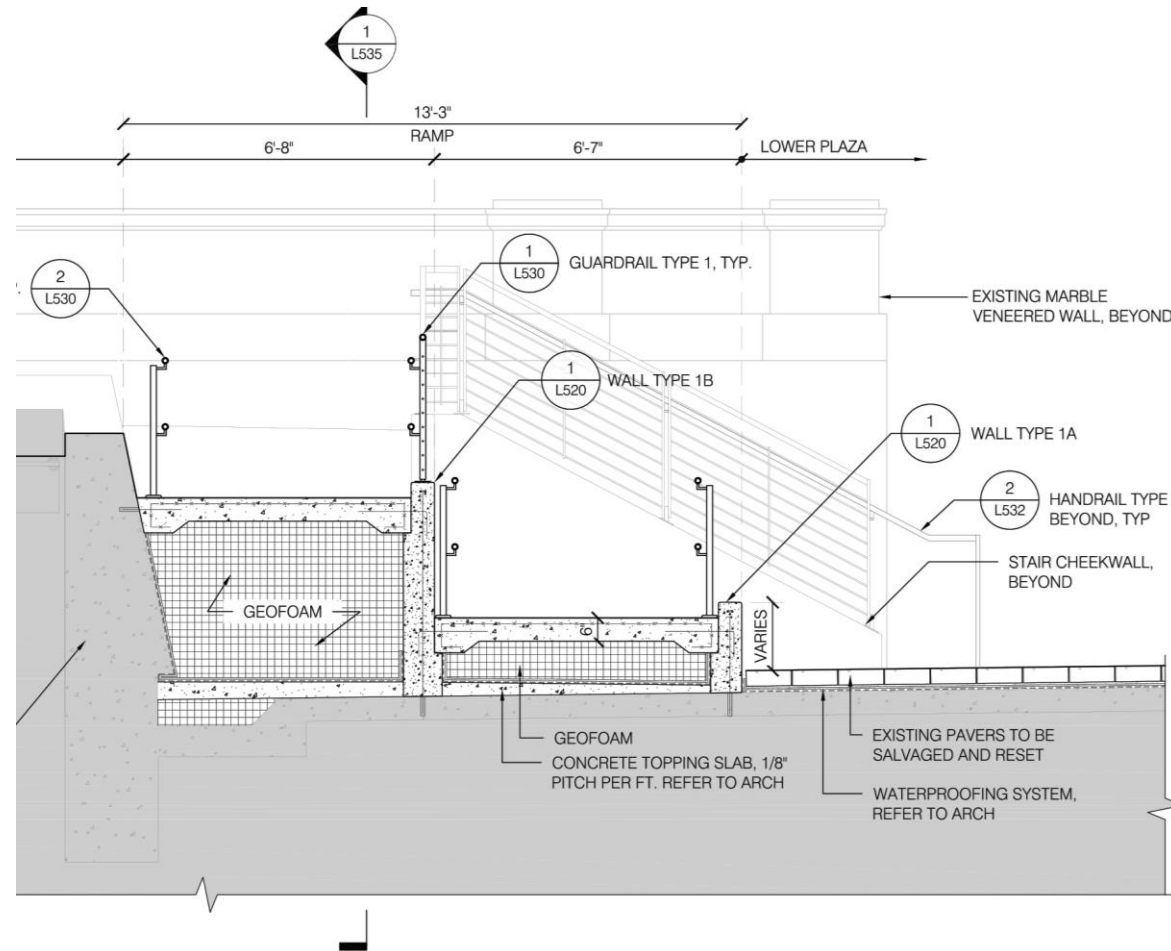




# Countway Plaza Ramp



# Railings



Harvard Art Museum



**HARVARD**  
MEDICAL SCHOOL

