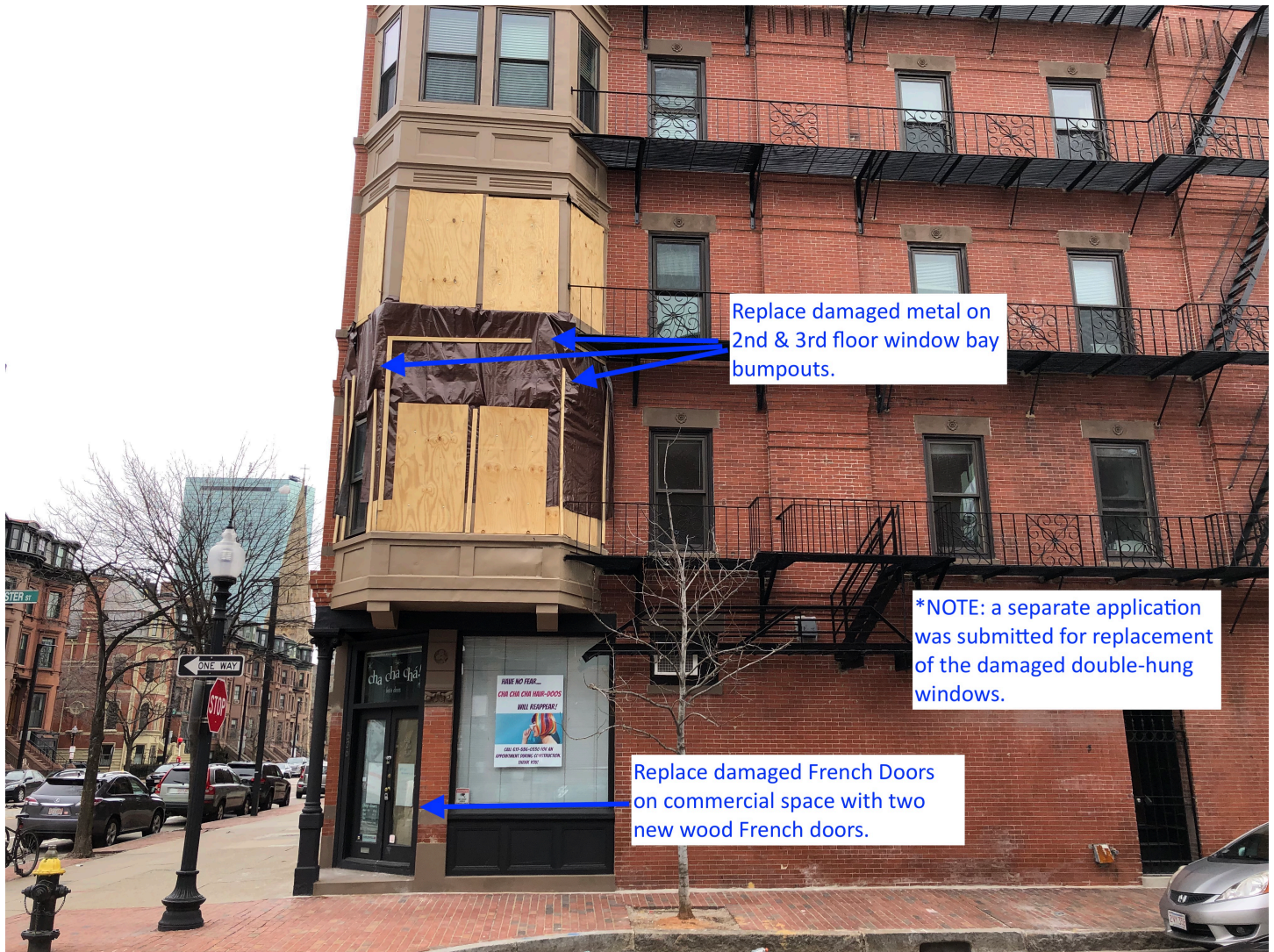


Replace damaged main door with new version of the same make/model of door as existing

Replace damaged French salon doors with new French wood doors with lower wood panels similar to front door.

*NOTE: a separate application was submitted for replacement of the damaged double-hung windows.



Replace damaged metal on 2nd & 3rd floor window bay bumpouts.

*NOTE: a separate application was submitted for replacement of the damaged double-hung windows.

Replace damaged French Doors on commercial space with two new wood French doors.

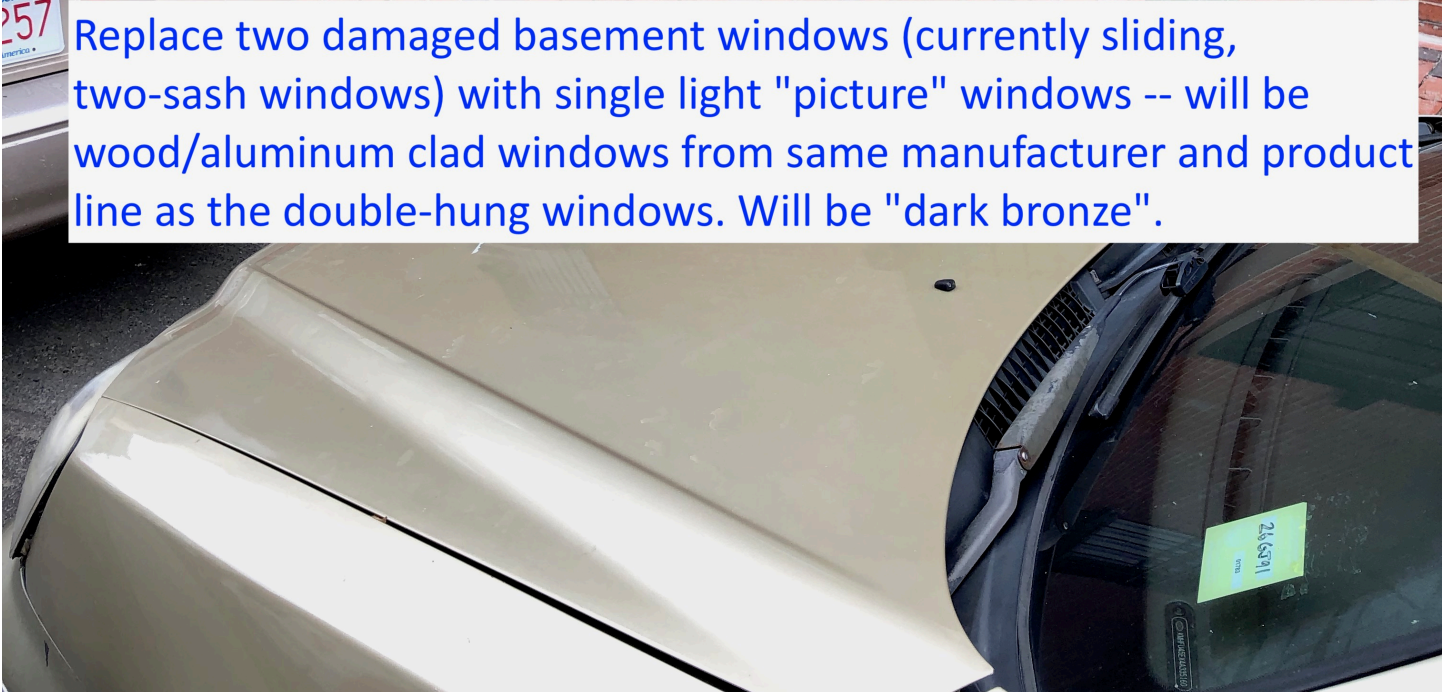


Replace damaged metal on 2nd & 3rd floor window bay bumpouts.

*NOTE: a separate application was submitted for replacement of the damaged double-hung windows.



Replace two damaged basement windows (currently sliding, two-sash windows) with single light "picture" windows -- will be wood/aluminum clad windows from same manufacturer and product line as the double-hung windows. Will be "dark bronze".



534-536 Columbus Ave, Boston

March 1, 2019

6524 — WYNDHAM®







SERIES: Builder's Advantage Series®
TYPE: Exterior Decorative
APPLICATIONS: Can be used for a swing door, with barn track hardware, with pivot hardware, in a patio swing door or slider system and many other applications for the home's exterior.

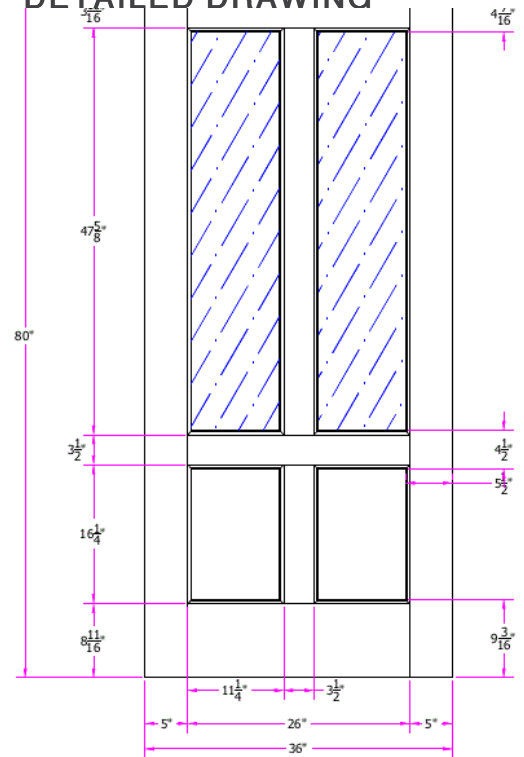
Construction Type:
 Engineered All-Wood Stiles and Rails with Dowel Pinned Stile/Rail Joinery

Panels: 3/4" VG Flat Panel
Glass: 3/4" Insulated Decorative Glazing
Caming: Silver

STANDARD FEATURES

-  Any Wood Species
-  Virtually Any Size
-  UltraBlock® Technology
-  Privacy Rating: 6

DETAILED DRAWING

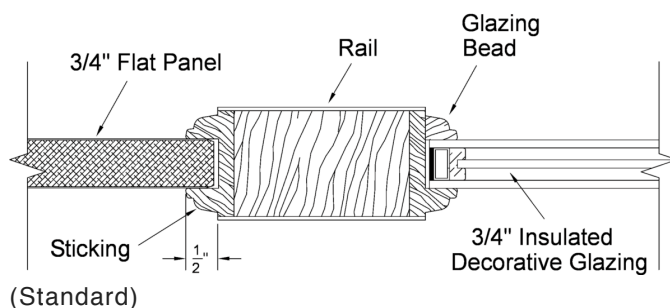


THIS DRAWING AND THE INFORMATION CONTAINED HEREIN IS PROPRIETARY TO SIMPSON DOOR COMPANY

534 Columbus Avenue Front Main Door

- will be clear glass

DETAILS



7501 – THERMAL SASH (TDL)



SERIES: Exterior French & Sash Doors

TYPE: Exterior French & Sash





APPLICATIONS: Can be used for a swing door, with barn track hardware, with pivot hardware, in a patio swing door or slider system and many other applications for the home's exterior.

Construction Type:

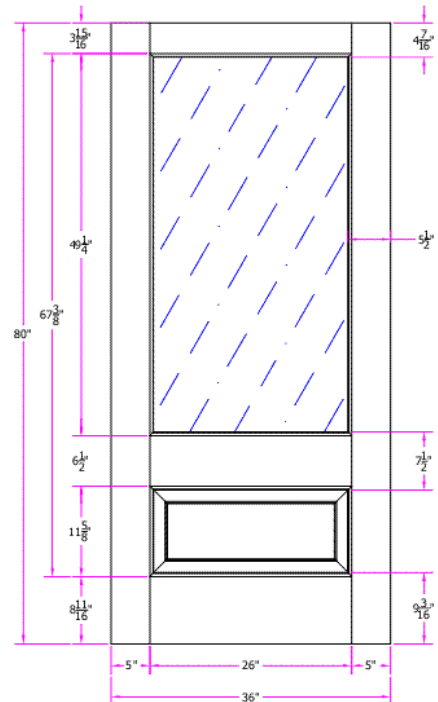
Engineered All-Wood Stiles and Rails with Dowel Pinned Stile/Rail Joinery

Glass: 3/4" Insulated Glazing

STANDARD FEATURES

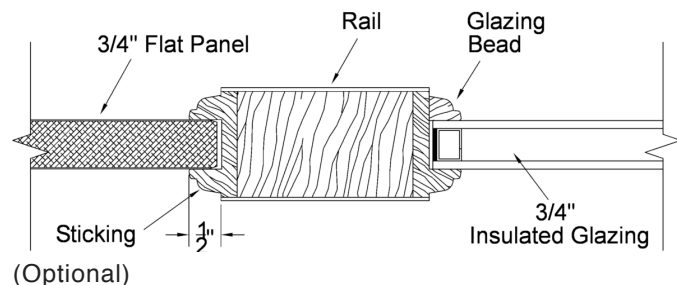
-  Any Wood Species
-  Virtually Any Size
-  Glass Options
-  Privacy Rating: 1

DETAILED DRAWING



534 Columbus Avenue Salon French Doors

- will be clear glass
- will be French doors





MAJESTY

Wood Windows and Patio Doors

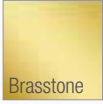


534-536 Columbus Avenue, Boston
February 18, 2019

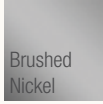
Window & Door Options

HARDWARE FINISHES

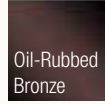
PREMIUM



Brasstone



Brushed Nickel



Oil-Rubbed Bronze

STANDARD



Coppertone



White

EXTERIOR COLORS



White



Almond



Dark Bronze



Forrest Green



Black

INTERIOR WOOD OPTIONS



Pine

Warm, unfinished pine ready for you to stain or paint once installed.



Prefinished White

Professionally prefinished for no mess or hassle post-installation. 10 year warranty. Gliding window only available in factory primer.

Due to printing limitations, finishes and colors shown are for representation only.

GRIDS

GRIDS

BETWEEN GLASS

Sealed between the panes of glass, GBG is easy to clean.



SIMULATED

DIVIDED LITES

The most authentic look of divided lites to complement traditional architecture



534 Columbus Windows

- "picture" windows for basement will also have exterior color "dark bronze" -- same as other windows

SOLID PONDEROSA PINE

The wood components of Majesty products resist rot, degradation, splitting, warping, and mildew through a controlled treatment process that immerses Ponderosa Pine in a special preservative similar to high quality deck sealant applications.



Strong and straight grained Ponderosa pine with exceptional beauty and strength

ALUMINUM CLADDING

The extruded 0.050" wall thickness of the frame provides strength, while the 0.024" wall thickness of the sash allows the cladding to be precision molded to protect the window sash and patio door panels from exterior environmental conditions. The result is eye catching, beautiful bevels and the sought-after aesthetics of custom wood windows.



Aluminum Clad Exterior shown in Forest Green (See options page for additional colors)

An electrostatic paint process adheres paint evenly onto all surfaces, ensuring an extremely durable finish that resists fading.

WEATHERSEALS

Concerned about installing wood windows in your climate? Don't be! Majesty seals are designed to perform over a wide range of temperatures and weather conditions. A lightweight polypropylene stiffener additive, which does not absorb water or collect mold, creates an airtight seal that does not distort over time. The seal ensures a consistent barrier from external conditions and allows for smooth window and patio door operation.



Foam-Tite compression bulb seals provide maximum protection from air and water

An average of 300 inches of custom designed Foam-Tite® compression bulb seals encase the full perimeter of the sash of Majesty windows – similar to seals you see on dishwashers or refrigerators.



PVC Jamb Liner available in both White or Almond

PVC JAMB LINER

The rigid non-compression Jamb Liner adds strength, stability and reduces air infiltration, while its special beveled design allows the sash to open and tilt easily.

Products for every application



PICTURE WINDOW

Whether you're replacing an old window or installing a new one, Majesty picture wood windows can make a dramatic difference. If you are opening up a room to a spectacular view, picture windows are a great choice. When paired with Majesty awning windows, the combination optimizes visible light with ability to vent fresh air into the room.



Awning Handle

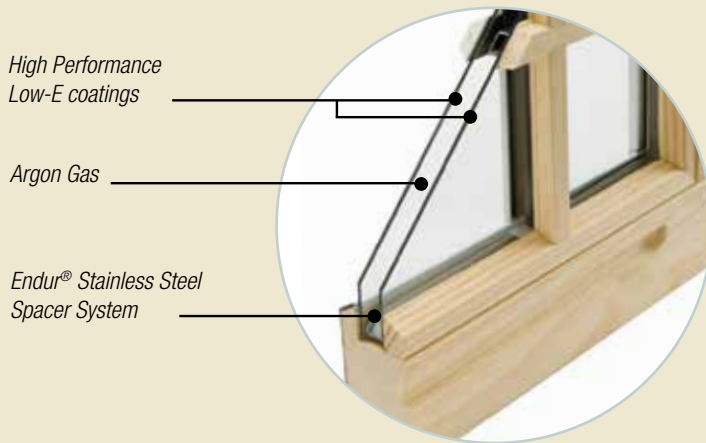
AWNING WINDOW

When you need added ventilation, Majesty awning wood windows hinge at the top and open outward, allowing fresh air into the room while deflecting rain away from your property.

534-536 Columbus Avenue, Boston
February 18, 2019

The best components for the best performance.

In keeping with traditional wood windows, Majesty windows withstand the elements and operate smoothly for a lifetime. Made in the USA, Majesty combines its impressive energy efficient glazing with a well-built, durable aluminum clad wood frame and sash – manufactured by folks who have been making windows for more than 50 years. That level of expertise is what sets Majesty apart; the perfect combination of state-of-the-art engineering, energy-saving value, and stylish elegance.



MAJESTY PREMIUM GLASS

Majesty double hung windows come standard with our Premium glass, which incorporates two panes of glass, high-performance double Low-E coatings, stainless steel spacer system, and argon gas. This glass system meets the most stringent ENERGY STAR® requirements which will significantly enhance the comfort in your home and help save you money on your home energy costs.



534-536 Columbus Avenue, Boston
February 18, 2019

THERMAL PERFORMANCE

For the most up to date structural and thermal performance values, as well as other product specifications, visit harveybp.com.

GLAZING	U-FACTOR	SHGC	VT	ENERGY STAR COMPLIANCE	GLAZING	U-FACTOR	SHGC	VT	ENERGY STAR COMPLIANCE
Double Hung	0.27	0.26	0.49	All Zones	Gliding Window	0.28	0.45	0.55	Northern Zones
Picture	0.25	0.27	0.51	All Zones	Gliding Patio Door	0.29	0.32	0.54	North Central, Northern Zones
Casement/Awning	0.26	0.22	0.38	All Zones	Hinged Patio Door	0.29	0.36	0.43	North Central, Northern Zones

U-factor measures the rate of non-solar heat transfer from one side of the window to the other. Heat transfer implies both heat loss out of a living space during cold weather and non-solar heat gain during hot summer months. The lower the U-factor, the better the performance.

Solar Heat Gain Coefficient (SHGC) measures how well a product blocks heat from the sun. The lower the SHGC, the better a product is at blocking unwanted heat gain.

Visible Transmittance (VT) measures how much light comes through a product. The higher the VT, the more light that comes through.



ENERGY STAR: This package includes everything that is needed for a product to meet ENERGY STAR requirements. Glazing, gas, glass thickness, etc. will vary by window and usually includes Low-E coating and Argon gas. This glazing package *does* qualify for ENERGY STAR.

ABOUT HARVEY BUILDING PRODUCTS

Harvey has built a solid reputation as a leading manufacturer and distributor of quality building products. A privately owned and operated business with over 50 years' experience, Harvey Building Products is known for outstanding craftsmanship and superior service as well as standing behind every product we make. In addition to manufacturing durable, attractive windows, doors and porch enclosures, Harvey distributes a full line of highly respected building products to professional contractors and builders throughout the Northeast.

Install Confidence.[®]



Harvey Building Products
1400 Main Street
Waltham, MA 02451-1623 USA
800-9HARVEY (800-942-7839)

534-536 Columbus Avenue, Boston
February 18, 2019

