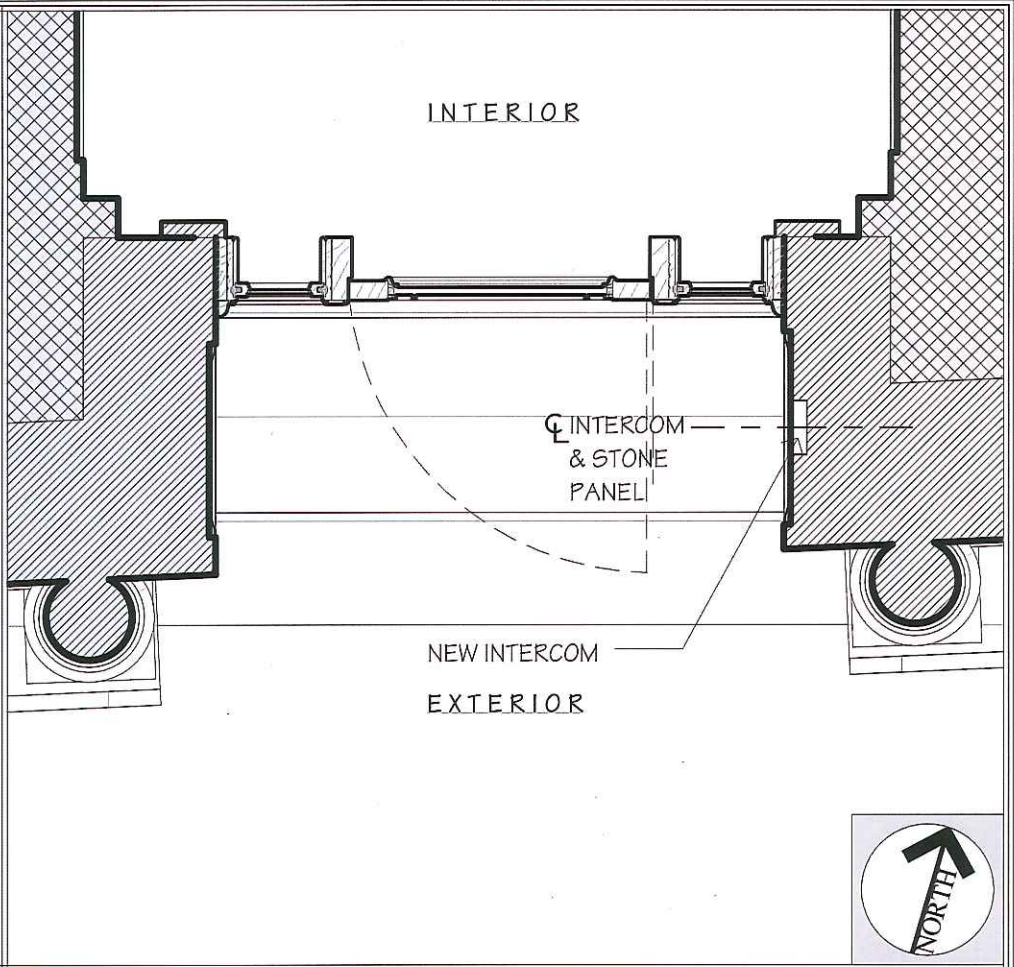


1 Original Front Door With Black Trim at Mount Vernon Street



4 Front Door Jamb Detail
1/2" = 1'-0"



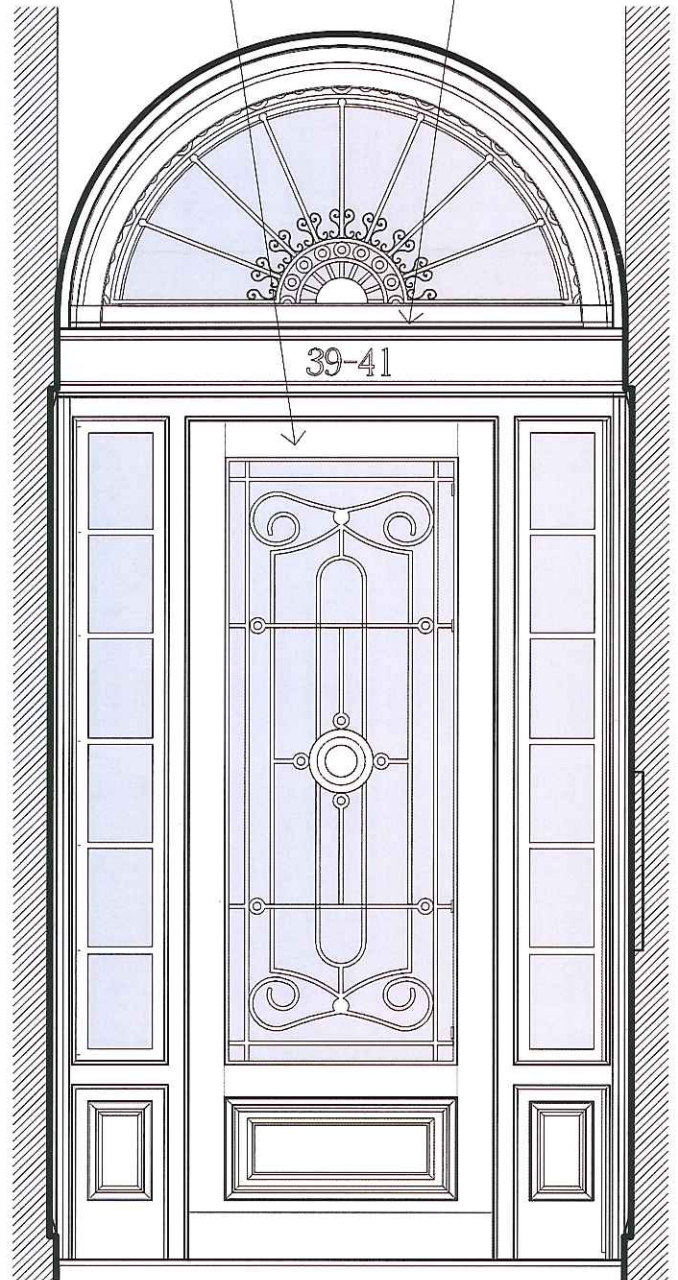
DOOR, SIDELIGHTS AND TRIM TO BE PAINTED BLACK

NEW FLUSH-MOUNTED INTERCOM IN BURNISHED BRASS FINISH

2 Proposed Front Door at Mount Vernon Street

WOOD DOOR TO BE PAINTED BLACK

WOOD TRIM AT DOOR, SIDELIGHTS & TRANSOM. TO BE PAINTED BLACK (SIM. TO ORIGINAL DOOR)



5 Enlarged Entry Door Elevation
1/2" = 1'-0"



NEW SIEDLE FLUSH-MOUNTED INTERCOM TO HAVE BURNISHED BRASS FINISH
6-3/4" x 22-1/4"

3 Proposed Brass Intercom