



15 CHANNEL CENTER HAS PREVIOUSLY REVIEWED THE EXISTING FIRE ESCAPES (FIRE ESCAPE A, AND FIRE ESCAPE B) WITH THE LANDMARKS COMMISSION AND AGREED TO RESTORE AND REINSTALL THEM.

THIS NEW APPLICATION PERTAINS TO FIRE ESCAPE A. UPON REMOVING FIRE ESCAPE A, IT WAS FOUND THAT THE EXTENT OF DETERIORATION WAS GREATER THAN ANTICIPATED. MOST OF THE COMPONENTS EXHIBITED ADVANCED RUST SCALING AND WERE DEEMED STRUCTURALLY UNSUITABLE. AFTER THIS REVIEW, IT WAS DETERMINED THAT RESTORING AND REUSING THE EXISTING IRON WOULD NOT BE COST-EFFECTIVE. 15 CHANNEL CENTER NOW INTENDS TO REPLACE THE FIRE ESCAPE A IN KIND. ADDITIONALLY, 15 CHANNEL CENTER IS ADDRESSING THE MASONRY REPAIRS AROUND THE FIRE ESCAPE AS THE EXTERIOR WALL HAS SIGNIFICANTLY DETERIORATED.

DUE TO BUDGET CONSTRAINS, THE WORK WILL BE CARRIED OUT IN PHASES AS DESPITE EFFORTS TO SECURE A GRANT FROM THE CITY OF BOSTON THROUGH THE COMMUNITY PRESERVATION ACT, IT WAS NOTED THAT THIS GRANT EXCLUDES FUNDING FOR FIRE ESCAPES, SO THIS FUND WILL BE DIRECTED TOWARD THE MASONRY WALL RESTORATION.

PHASE 1, BEGINNING IMMEDIATELY, WILL INVOLVE REPAIRING THE MASONRY WALL DAMAGES CAUSED BY THE FIRE ESCAPE DETERIORATED CONDITION. PHASE 2, SLATED FOR 2025, WILL FOCUS ON THE INSTALLATION OF THE NEW FIRE ESCAPE. PLEASE NOTE THAT AS PREVIOUSLY MENTIONED, THE FIRE ESCAPE WILL BE REPLACED IN KIND.

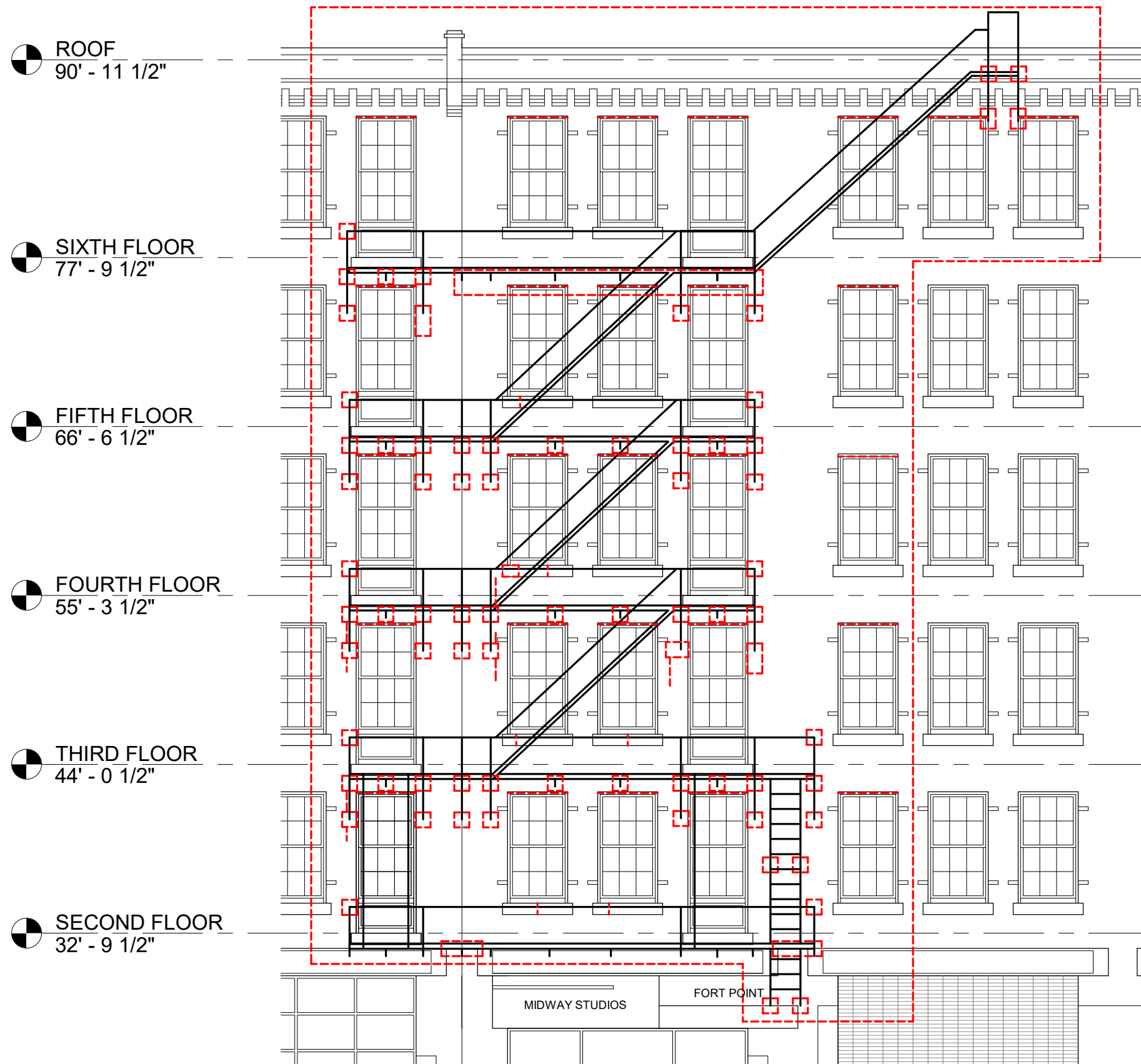
THE EXISTING FIRE ESCAPE A IS BEING STORED AND IS PLANNED FOR DISPOSAL WITHIN THE NEXT MONTH. BEFORE DISPOSAL, MIDWAY ARTIST STUDIO SEEKS CLARIFICATION ON WHETHER LANDMARKS HAS ANY REQUIREMENTS ON INSPECTING THE EXISTING FIRE ESCAPE.



FIRE ESCAPE A TO BE REPLACED IN KIND



MEDALLION AVE FACADE



PHASE 1:
 MASONRY REPAIRS AROUND FIRE ESCAPE A





STEEL CHANNEL DETERIORATION - CONSIDERABLE SECTION LOSS DUE TO RUST SCALING



STEEL CHANNEL DETERIORATION - CONSIDERABLE SECTION LOSS DUE TO RUST SCALING

PHASE 2:
FIRE ESCAPE A TO BE REPLACED IN KIND



RUST SCALING AT STEEL ANGLES - ANGLES MOVING OUT OF PLACE



STEEL CHANNEL DETERIORATION - CONSIDERABLE SECTION LOSS DUE TO RUST SCALING



SQUARE BOLT FROM THE 70'S NO LONGER USED. CURRENTLY, THERE IS NO TOOL TO PERFORM PULL TEST ON THESE BOLTS



SIGNIFICANT AMOUNT OF RUST SCALING IS MOVING THE STEEL MEMBER OUT OF PLACE



STEEL CHANNEL DETERIORATION - CONSIDERABLE SECTION LOSS DUE TO RUST SCALING



CONSIDERABLE SECTION LOSS DUE TO RUST SCALING

DETERIORATIONS ON FIRE ESCAPE A:

MOST OF THE COMPONENTS EXHIBITED ADVANCED RUST SCALING AND WERE DEEMED STRUCTURALLY UNSUITABLE. THE ONLY COMPONENTS THAT COULD BE RESTORED WERE THE RAILINGS. AFTER THE REVIEW OF ALL THE EXISTING COMPONENTS, IT WAS DETERMINED THAT RESTORING AND REUSING THE EXISTING IRON WOULD NOT BE COST-EFFECTIVE.



CONSIDERABLE SECTION LOSS ON STEEL MEMBER



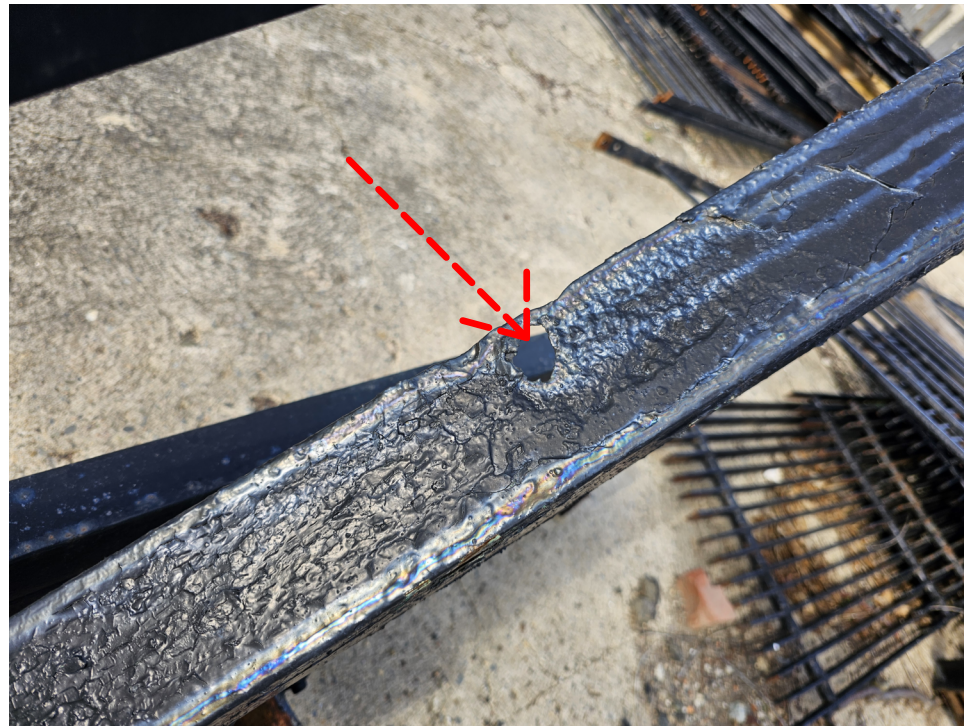
SIGNIFICANT RUST SCALING MOVING STEEL COMPONENTS OUT OF PLACE



CONSIDERABLE SECTION LOSS ON STEEL MEMBER



CONSIDERABLE SECTION LOSS ON STEEL MEMBER



CONSIDERABLE SECTION LOSS ON STEEL MEMBER



SIGNIFICANT RUST SCALING MOVING STEEL COMPONENTS OUT OF PLACE